



SAFETY FIRST STARTS HERE

COMPLETE FLOOR & AREA MARKING SOLUTIONS



Build a foundation of

**SAFETY AND
OPERATIONAL
EXCELLENCE**

Table of Contents

The Brady Difference	4
 Resources	6
The Power of Lean/5S & Visual Organization	7
Laying the Groundwork	8
Ensuring Compliance	10
Guide to Color-Coding	12
 Floor Tapes & Marking	14
ToughStripe® Tapes, Shapes & Signs	16
ToughStripe Installation Guide	22
Specialty Tapes & Kits	24
LED Sign & Line Projectors	28
 Area Marking	30
Barriers, Cones & Floor Stands	32
Mirrors, Bollards & Bumps	37
Glow Tapes & Signs	38
Underground & Barricade Tapes	40
 Audit & Installation Services	43

Make your mark

► Any floor. Any surface. Any area.

Fully outfit your facility, execute Lean/5S strategies and sustain continuous improvement gains with Brady as your trusted partner.



PLAN

Your facility, your way

Brady experts partner with you to understand your unique challenges and goals. We can provide expert guidance on regulatory requirements, industry best practices and facility-specific needs to help you design a floor marking system that optimizes safety, efficiency and productivity.



MARK

Find the right solution for every need

Brady offers the widest selection of durable floor and area marking products designed to be seen and stay seen. From purpose-built tapes to bold signage and innovative projectors, you'll have no trouble finding the right solution to meet the unique demands of your facility.



SUSTAIN

Built to last and designed for Lean/5S

Brady solutions support continuous improvement initiatives. Durable Brady products withstand heavy traffic, harsh environments, frequent cleaning and more. Plus, our adaptable solutions give you the power to be flexible as your facility evolves, ensuring ongoing standardization and efficiency.

Floor & Area Marking Resources

- Discover the benefits of a consistent safety identification and marking system, learn how to implement it effectively, and find inspiration and expert advice. Whether you're just getting started or looking to improve your existing facility marking, you'll find valuable insights and practical advice to help you make the most of your investment.



- Laying the Groundwork
- Ensuring Compliance
- Guide to Color-Coding

The power of Lean/5S & VISUAL ORGANIZATION

While OSHA requires clear markings for aisles and walkways, a truly effective floor marking system goes beyond the basics. By incorporating Lean/5S and visual workplace principles, you create a safer, more efficient and more productive workplace.



Faster visual search

Help employees easily locate materials and equipment.



Better organization

Color-coded areas promote order and efficiency.



Enhanced safety

Clearly marked aisles and exits keep everyone safe.



Sustainable efficiency

Standardized, durable markings solidify Lean/5S initiatives to reduce waste and continually improve process flow.



The 5 S's of Lean

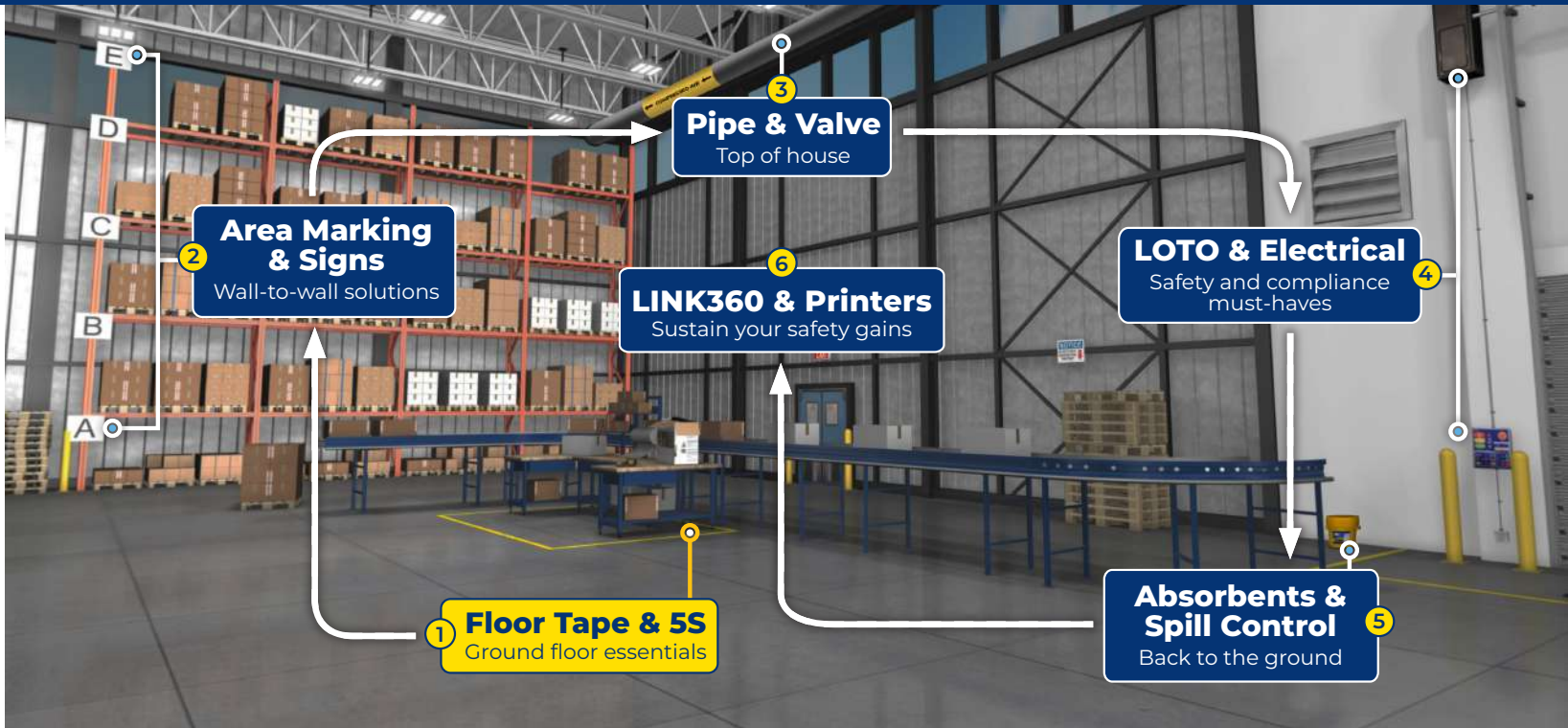
5S is a Lean manufacturing methodology used to minimize waste, optimize productivity and increase efficiency. Companies that implement 5S enjoy a cleaner, more organized workplace and, often as a result, increased safety.

Learn more about Lean/5S and ways to implement it at your facility at [BradyID.com/Resources](https://bradyid.com/resources).

LAYING THE GROUNDWORK

A step-by-step guide to comprehensive visual workplace safety

➤ Floor marking is the first step in creating a safer, more organized and more efficient facility. Through a systematic approach, you can identify and safeguard your facility from floor to ceiling using a robust set of purpose-built solutions from Brady.




1



FLOOR TAPE & 5S
Look for damaged or missing floor marking. Durable ToughStripe® floor tapes are an effective way to ensure safety, enhance organization and execute Lean/5S methodologies.

2



AREA MARKING & SIGNS
Identify areas with confusing, missing or non-compliant signage. Brady signs are built for visibility, compliance and durability.

3



PIPE & VALVE
Scan for pipes and valves lacking clear identification. Brady pipe markers and valve tags are ASME/ANSI A13.1 compliant.

4




LOCKOUT (LOTO) & ELECTRICAL
Spot potential electrical and arc flash hazards or outdated LOTO procedures. Brady's full line of solutions and safety services help ensure OSHA compliance and accident prevention.

5



ABSORBENTS & SPILL CONTROL
Identify areas at risk of leaks, drips and spills. Brady absorbent solutions enable swift and effective spill response.

6



LINK360 & PRINTERS
Manual labeling and low-quality printing systems drain time and money. Brady's advanced printers and software streamline labeling and processes.

ENSURING COMPLIANCE

Regulations and industry standards to know

➤ Several standards and regulations require or recommend floor marking and color-coding to enhance safety and efficiency. Let's explore some key guidelines to ensure your facility is compliant and optimized for success.

INTERNATIONAL FIRE CODE GUIDELINES



International Fire Code

IFC 1024.1: Approved luminous egress path markings delineating the exit path shall be provided...having occupied floors located more than 75 ft. above the lowest level of fire department vehicle access.

IFC 1024.2.1: A solid and continuous stripe shall be applied to the horizontal leading edge of each step and shall extend the full length of each step.

IFC 1024.2.4: Perimeter and floor mounted demarcation lines shall be placed within 4 in. of the wall and extend to within 2 in. of the markings on the leading edge of landings. Demarcation lines shall be 1 in. to 2 in. wide with interruptions not exceeding 4 in.

OSHA FLOOR & AREA MARKING GUIDELINES



Means of Egress

OSHA CFR 1910.35: OSHA will deem an employer demonstrating compliance with the exit route provisions of NFPA 101, Life Safety Code or the exit-route provisions of the International Fire Code (IFC), 2009 edition, to be in compliance with §1910.34, §1910.36 and §1910.37.



Letter of Interpretation

OSHA CFR 1910.22(b)(2): The lines used to delineate aisles may be any color so long as they clearly define the area considered as aisle space. The lines may be continuous or be composed of dots, squares or strips. The recommended width of aisle markings varies from 2 in. to 6 in., therefore any width 2 in. or more is considered acceptable.



Use of Mechanical Equipment

OSHA CFR 1910.176(a): Where mechanical handling equipment is used, sufficient safe clearances shall be allowed for aisles, at loading docks, through doorways and wherever turns or passage must be made. Aisles and passageways shall be kept clear and in good repair, with no obstruction across or in aisles that could create a hazard.

Permanent aisles and passageways shall be appropriately marked.



General Environmental Controls

OSHA CFR 1910.144(a)(1): Red shall be the basic color for the identification of fire protection equipment and apparatus, containers of flammable liquids, stop buttons and electrical switches used for emergency stopping of equipment.

OSHA CFR 1910.144(a)(3): Yellow shall be the basic color for designating caution and marking physical hazards.

GUIDE TO COLOR-CODING

Speed up visual recognition and search

➤ A well-executed color-coding system is key to making your floor and area marking as effective as possible. There are two relevant standards regarding the use of color in floor markings. ANSI Z535.1 is specific to safety signs, not floors, while OSHA 1910.144 is focused on fire and physical hazards. So, while they're good to know and offer some guidance, creating a comprehensive color-coded floor marking system is up to you. The following is a commonly adopted color-coding guide that overlaps with related aspects of these standards and can help you ensure consistency in your workplace.

Color		Area
Yellow		Aisleways, traffic lanes and work cells
White		Equipment and fixtures not otherwise color-coded (workstations, carts, floor stand displays, racks, etc.)
Blue, Green and/or Black		Materials and components, including raw materials, work-in-progress and finished goods
Orange		Materials or products held for inspection
Red		Defects, scrap, rework and red tag areas
Photoluminescent		Steps and perimeter demarcation to identify egress routes in lights-out emergencies
Red and White		Areas to be kept clear for safety/compliance reasons (areas in front of electrical panels, firefighting equipment and safety equipment, such as eyewash stations, safety showers and first aid stations)
Black and White		Areas to be kept clear for operational purposes (not related to safety and compliance)
Black and Yellow		Areas that may expose employees to special physical or health hazards

Aisleways & Traffic Lanes



Work Cells



Equipment



Material Storage Areas



Material Storage Areas



Material Storage Areas



QA Inspection



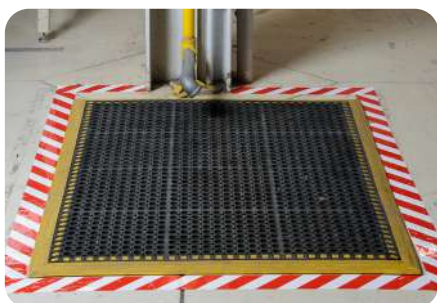
Defects, Scrap & Rework



Photoluminescent Stair Marking



Keep Clear, Safety



Keep Clear, Operational



Hazard Area



Floor Tapes & Marking

Set the stage for a safe and productive workplace

Visual cues are essential for a safe and efficient workplace. Durable, versatile and highly visible floor tapes and marking solutions provide clear guidance for traffic flow, define work areas and enhance overall safety. From traditional floor tapes to LED lines and signs, Brady offers a wide variety of colors, sizes, materials and technologies. Get the right solution for your facility's communication requirements, from aisle marking to Lean/5S initiatives and everything in between.

- ▶ **ToughStripe® Tapes, Shapes & Signs**
- ▶ **ToughStripe Installation Guide**
- ▶ **Specialty Tapes & Kits**
- ▶ **LED Sign & Line Projectors**





ToughStripe Tapes, Shapes & Signs

Stick it to ice-cold, heat-soaked, frequently cleaned, forklift-bruising, foot-traffic floors

ToughStripe Floor Marking Tapes are built for a wide range of environments and applications. From heavy-traffic floors to ice-cold freezers and everything in between, ToughStripe is ready for any challenge. Durable, reliable and highly visible, these tapes are made to keep your facility safe and organized, no matter what.

Find the purpose-built ToughStripe that's right for you



ToughStripe

- Ideal for heavy foot traffic, light industrial applications and Lean/5S
- Polyester material

SEE PAGES 17-20



ToughStripe Cold

- Ideal for industrial freezers and unheated cold-climate spaces
- Polyester material

SEE PAGE 20



ToughStripe Vinyl

- Ideal for temporary marking in areas that change often
- Vinyl material

SEE PAGE 20



ToughStripe Max

- Ideal for forklift, industrial vehicle and heavy traffic areas
- Plasticizer-free polyester (PET-G) material

SEE PAGE 21

ToughStripe | The Outstanding Original

ToughStripe Floor Marking Tape

- Tried, true and fiercely versatile
- Comes in the widest range of color, shape and customization options for aiseways, area marking, Lean/5S and most any markable space
- Goes down and stays down up to 3 years
- Exceeds ANSI 137.1 safety standards for clean, dry nonslip surfaces



Colors

Color	2 in. x 100 ft.	3 in. x 100 ft.	4 in. x 100 ft.
Yellow	104312	104342	104372
Red	104313	104343	104373
Orange	104316	104346	104376
White	104311	104341	104371
Green	104315	104345	104375
Blue	104314	104344	104374
Purple	134086	134087	134088
Brown	134089	134090	134091
Grey	134092	134093	134094
Black	104310	104340	104370

Stripes

Color	2 in. x 100 ft.	3 in. x 100 ft.	4 in. x 100 ft.
Ylw / Blk	104317	104347	104377
Rd / Wht	104318	104348	104378
Rd / Ylw	132430	132431	132432
Org / Blk	132433	132434	132435
Wht / Blk	104319	104349	104379
Grn / Wht	132436	132437	132438
Blu / Ylw	132439	132440	132441

Checkers

Color	2 in. x 100 ft.	3 in. x 100 ft.	4 in. x 100 ft.
Rd / Wht	121916	121917	121918
Blk / Wht	121913	121914	121915

ToughStripe Die-Cut Shapes

- All the durability and high visibility of ToughStripe in easy-to-apply designs
- Ready-made shapes deliver more effective visual cues
- Pre-cut designs eliminate manual work

Dots

Color	3.5 in. Dia. 350/roll
Yellow	104403
Red	104400
White	104405
Green	104401
Blue	104402
Black	104404

Arrows

Color	2 in. x 5 in. 100/pack	3 in. x 8 in. 100/pack	4 in. x 10 in. 100/pack
Yellow	104415	104421	104427
Red	104412	104418	104424
White	104417	104423	104429
Green	104413	104419	104425
Blue	104414	104420	104426
Black	104416	104422	104428

Footprints

Color	10 ft. x 3.5 in. 5 right and 5 left/pack
Yellow	104409
Red	104406
White	104411
Green	104407
Blue	104408
Black	104410

Corner Marks

Color	2 in. x 5 in. 20/pack	3 in. x 8 in. 20/pack	4 in. x 10 in. 20/pack
Yellow	104433	104445	104457
Red	104430	104442	104454
White	104435	104447	104459
Green	104431	104443	104455
Blue	104432	104444	104456
Black	104434	104446	104458

Center Marks

Color	2 in. x 5 in. 20/pack	3 in. x 8 in. 20/pack	4 in. x 10 in. 20/pack
Yellow	104469	104475	104481
Red	104466	104472	104478
White	104471	104477	104483
Green	104467	104473	104479
Blue	104468	104474	104480
Black	104470	104476	104482

Divider Marks

Color	2 in. x 5 in. 20/pack	3 in. x 8 in. 20/pack	4 in. x 10 in. 20/pack
Yellow	104439	104451	104463
Red	104436	104448	104460
White	104441	104453	104465
Green	104437	104449	104461
Blue	104438	104450	104462
Black	104440	104452	104464

ToughStripe Numbers & Letters

- Clearly label aisles, racks and equipment
- Durable, high-visibility markings for improved organization
- Streamline workflows and enhance safety



► View full offering on [BradyID.com/Floor-Tape](https://bradyid.com/floor-tape)

ToughStripe | The Outstanding Original

Print-on-Demand ToughStripe Tape

- Create custom floor marking tape with your own text
- Perfect for wayfinding and specialized instructions
- Adds a personal touch to your facility
- For use with a Brady industrial printer



B#	Color	1.125 in W x 100 ft L	2.25 in W x 100 ft L	3 in W x 100 ft L	4 in W x 100 ft L	Descriptions	Printer Compatibility
B-483A	Black	B30C-1125-483BK-KT	B30C-2250-483BK-KT	-	B30C-4000-483BK-KT	ToughStripe Printable Floor Marking Label Tape (with Overlaminate) for B30 Printers	BBP35, BBP37, i3300, i5300, S3000, S3100, S3700
B-483A	Blue	B30C-1125-483BL-KT	B30C-2250-483BL-KT	-	B30C-4000-483BL-KT	ToughStripe Printable Floor Marking Label Tape (with Overlaminate) for B30 Printers	BBP35, BBP37, i3300, i5300, S3000, S3100, S3700
B-483A	Green	B30C-1125-483GN-KT	B30C-2250-483GN-KT	-	B30C-4000-483GN-KT	ToughStripe Printable Floor Marking Label Tape (with Overlaminate) for B30 Printers	BBP35, BBP37, i3300, i5300, S3000, S3100, S3700
B-483A	Orange	B30C-1125-483OR-KT	B30C-2250-483OR-KT	-	B30C-4000-483OR-KT	ToughStripe Printable Floor Marking Label Tape (with Overlaminate) for B30 Printers	BBP35, BBP37, i3300, i5300, S3000, S3100, S3700
B-483A	Red	B30C-1125-483RD-KT	B30C-2250-483RD-KT	-	B30C-4000-483RD-KT	ToughStripe Printable Floor Marking Label Tape (with Overlaminate) for B30 Printers	BBP35, BBP37, i3300, i5300, S3000, S3100, S3700
B-483A	White	B30C-1125-483WT-KT	B30C-2250-483WT-KT	B30C-3000-483WT-KT	B30C-4000-483WT-KT	ToughStripe Printable Floor Marking Label Tape (with Overlaminate) for B30 Printers	BBP35, BBP37, i3300, i5300, S3000, S3100, S3700
B-483A	Yellow	B30C-1125-483YL-KT	B30C-2250-483YL-KT	B30C-3000-483YL-KT	B30C-4000-483YL-KT	ToughStripe Printable Floor Marking Label Tape (with Overlaminate) for B30 Printers	BBP35, BBP37, i3300, i5300, S3000, S3100, S3700

B#	Color	1 in W x 50 ft L	2 in W x 50 ft L	Descriptions	Printer Compatibility
B-483A	Black	M7-1000-483-BK-KT	M7-2000-483-BK-KT	ToughStripe Printable Floor Marking Tape (with Overlaminate) for M7 Printers	BMP71, M710
B-483A	Blue	M7-1000-483-BL-KT	M7-2000-483-BL-KT	ToughStripe Printable Floor Marking Tape (with Overlaminate) for M7 Printers	BMP71, M710
B-483A	Green	M7-1000-483-GN-KT	M7-2000-483-GN-KT	ToughStripe Printable Floor Marking Tape (with Overlaminate) for M7 Printers	BMP71, M710
B-483A	Orange	M7-1000-483-OR-KT	M7-2000-483-OR-KT	ToughStripe Printable Floor Marking Tape (with Overlaminate) for M7 Printers	BMP71, M710
B-483A	Red	M7-1000-483-RD-KT	M7-2000-483-RD-KT	ToughStripe Printable Floor Marking Tape (with Overlaminate) for M7 Printers	BMP71, M710
B-483A	White	M7-1000-483-WT-KT	M7-2000-483-WT-KT	ToughStripe Printable Floor Marking Tape (with Overlaminate) for M7 Printers	BMP71, M710
B-483A	Yellow	M7-1000-483-YL-KT	M7-2000-483-YL-KT	ToughStripe Printable Floor Marking Tape (with Overlaminate) for M7 Printers	BMP71, M710

B#	Color	Product #	Dimensions	Descriptions	Printer Compatibility
B-634	Clear	142134	1 in W x 50 ft L	Overlaminate Tape	N/A
B-634	Clear	142136	1.125 in W x 100 ft L	Overlaminate Tape	N/A
B-634	Clear	142135	2 in W x 50 ft L	Overlaminate Tape	N/A
B-634	Clear	142137	2.25 in W x 100 ft L	Overlaminate Tape	N/A
B-634	Clear	142138	3 in W x 100 ft L	Overlaminate Tape	N/A
B-634	Clear	142139	4 in W x 100 ft L	Overlaminate Tape	N/A
B-483A	Yellow	M7-1000-483-YL-KT	M7-2000-483-YL-KT	ToughStripe Printable Floor Marking Tape (with Overlaminate) for M7 Printers	BMP71, M710



Find your ideal Brady printer
Make your floor tape even more effective

Print-on-demand ToughStripe tape is compatible with a wide variety of Brady industrial label printers. Each offers a unique set of features — including size, speed, color capabilities and more — to help you print custom identification solutions best suited to your needs.

► Learn more at [BradyID.com/DesktopPrinters](https://bradyid.com/DesktopPrinters) or contact your rep.

ToughStripe | The Outstanding Original

ToughStripe Floor Marking Signs

- Bold signage for maximum impact
- Reinforce your floor marking system with specific signage
- Communicate critical safety messages and identify hazards
- Provide clear directions for improved navigation





FIRST AID
104486



SAFETY SHOWER
104487



EYE WASH
104507



ARROW
104489



KEEP AISLES CLEAR
104508



PEDESTRIAN TRAFFIC ONLY
104509



FIRE EXTINGUISHER
104492



EMERGENCY EXIT
104495



EXIT
104490



STOP
104511



WARNING FORKLIFT TRAFFIC
104512



WATCH OUT FOR FORK LIFT TRUCKS
104501



PRODUCTION AREA
All Through Traffic
Use Designated Walkway
104513



EAR PROTECTION AREA
104502



EYE PROTECTION AREA
104503



HARD HAT AREA
104504



SAFETY GLASSES REQUIRED
104510



RADIATION AREA
104488



WATCH YOUR STEP
104499



FIRST AID
104491



DO NOT ENTER
104497



CHEMICAL STORAGE
104498

ToughStripe | The Outstanding Original



Pre-Printed ToughStripe Tape

- Communicate essential information with pre-printed messages
- Variety of standard messages and directional arrows
- Enhances safety and organization

Legend	Color	2 in. x 100 ft.	3 in. x 100 ft.	4 in. x 100 ft.
QA Inspection Area	Blk on Org	121364	121365	121366
Caution ESD Area	Blk on Ylw	121367	121368	121369



Pre-Spaced ToughStripe Shapes

- Pre-spaced for easy and accurate floor marking
- Ideal for walkways, work cells and designated areas
- Saves time and effort while ensuring professional results

Color	3.5 in. x 100 ft. 55 dots/18 in. apart	2 in. x 5 in. x 100 ft. 52 arrows/18 in. apart	2 in. x 8 in. x 100 ft. 46 dashes/18 in. apart
Yellow	104523	104529	104556
Red	104521	104526	142179
White	104522	104555	142177
Green	104520	104527	142181
Blue	104524	104528	142180
Black	104525	104554	142178

ToughStripe Cold | 0°F. Zero Messing Around.

ToughStripe Cold

- Unrelenting in unforgiving temps
- Ideal for industrial freezers, food and beverage facilities, refrigerated warehousing and anywhere cold is king
- Sticks to cold surfaces as low as -13°F
- Withstands heavy foot traffic and medium vehicle traffic

Color	2 in. x 100 ft.	3 in. x 100 ft.	4 in. x 100 ft.
Yellow	152117	152118	152119
Black	152736	152737	152738
Blue	152739	152740	152741
Green	152742	152743	152744
White	152733	152734	152735
Red	152748	152749	152750
Orange	152745	152746	152747
Black / Yellow striped	152754	152755	152756
Black / White striped	152751	152752	152753



ToughStripe Vinyl | Mighty Fast Flexibility

ToughStripe Vinyl

- Mark, remove, repeat and relax
- Vinyl floor tape option is ideal for short-term marking in high-turnover areas
- Easy to apply, easy to remove and easy on your budget
- Good chemical, oil and water resistance

Color	2 in. x 36 yd.	3 in. x 36 yd.	4 in. x 36 yd.
Yellow	58200	58250	102838
Red	58201	58251	102836
Orange	102825	102829	102835
White	58203	58253	102837
Green	58202	58252	102834
Blue	58220	58221	102833
Black	58222	58223	102839
Brown	102828	102832	102840
Purple	102827	102831	-
Grey	102826	102830	-



ToughStripe Max | Fights Off Forklifts

ToughStripe Max

- Built stronger to last longer
- Purpose-built to hold its ground in forklift and heavy traffic areas
- Thinner profile and true edge-to-edge adhesive minimize pick points
- Damage-isolating design keeps tape intact longer by preventing rips, gouges and tears from running



Solid ToughStripe Max Tape

Color	2 in. x 100 ft.	3 in. x 100 ft.	4 in. x 100 ft.
Yellow	177015	177014	177016
Black	177038	177049	177059
Blue	177019	177023	177037
Green	177022	177031	177036
White	177021	177026	177027
Red	177020	177028	177032
Orange	177030	177034	177042
Purple	177045	177043	177074
Brown	177068	177070	177069
Gray	177062	177078	177096

Striped ToughStripe Max Tape

Color	2 in. x 100 ft.	3 in. x 100 ft.	4 in. x 100 ft.
Black / Yellow striped	177017	177018	177024
Black / Orange striped	177056	177029	177047
Black / White striped	177035	177040	177060
Red / White striped	177025	177033	177046
Red / Yellow striped	177052	177057	177051
Green / White striped	177041	177048	177055
Blue / Yellow striped	177058	177083	177053
Magenta / Yellow striped	177092	177088	177076
Blue / White striped	177050	177054	177063

Dots

Color	3.5 in. diameter 20 / pack
Black	177084
White	177132
Red	177131
Green	177097
Blue	177130
Yellow	177089

Corner “L” Marks

Color	2 in. x 5 in. 20 / pack	3 in. x 8 in. 20 / pack	4 in. x 10 in. 20 / pack
Black	177098	177087	177139
White	177067	177075	177154
Red	177101	177150	177152
Green	177082	177100	177147
Blue	177061	177081	177143
Yellow	177039	177080	177065

Center “+” Marks

Color	2 in. x 5 in. 20 / pack	3 in. x 8 in. 20 / pack	4 in. x 10 in. 20 / pack
Black	177104	177112	177113
White	177106	177102	177118
Red	177109	177116	177117
Green	177103	177077	177115
Blue	177099	177079	177114
Yellow	177064	177119	177120

Divider “T” Marks

Color	2 in. x 5 in. 20 / pack	3 in. x 8 in. 20 / pack	4 in. x 10 in. 20 / pack
Black	177105	177121	177122
White	177107	177127	177128
Red	177110	177125	177126
Green	177095	177085	177124
Blue	177094	177073	177123
Yellow	177066	177090	177129

Arrows

Color	2 in. x 5 in. 20 / pack	3 in. x 8 in. 20 / pack	4 in. x 10 in. 20 / pack
Black	177134	177135	177136
White	177149	177151	177153
Red	177145	177146	177148
Green	177141	177142	177144
Blue	177137	177138	177140
Yellow	177093	177111	177072

Footprints

Color	10 in. x 3.5 in. 5 right and 5 left / pack
Black	177108
White	177086
Red	177133
Green	177071
Blue	177091
Yellow	177044

ToughStripe Installation Guide

ToughStripe Floor Marking Tapes are engineered for long-lasting adhesion and exceptional durability. With minimal prep and a few simple steps, your floors will be organized, safer and looking their best in no time.



PREPARE THE SURFACE



LAY AND SMOOTH OUT THE TAPE



PUT IT DOWN



NEEDS CHANGE? PULL IT UP

- ▶ **Plan** — Visualize your layout and do not install tape over existing markings, gaps or large surface imperfections.
- ▶ **Clean** — ToughStripe is optimized for clean, dry surfaces. Remove old tape or paint, and sweep away any debris.
- ▶ **Degrease (optional)** — For extra stubborn grime, use a mild degreaser (no chlorine- or acid-based cleaners). Mop clean with water and ensure the surface is completely dry before moving on.
- ▶ **Confirm** — Surface temperature should be above 50°F (10°C) for best results. For temperatures as low as -13°F (-25°C), use ToughStripe Cold.
- ▶ **Apply:**
 - **Solo** — Peel 2" of liner, tack the start, unroll along your line with remaining liner in place and confirm placement. Then, carefully peel the liner and smooth it down from the tacked starting point.
 - **Teamwork** — One person tacks and smooths, the other unrolls and removes the liner as you go.
- ▶ **Optimize** — Use mitered corners and radius or clipped ends to minimize pick points. Do not overlap tape.

PRO TIP! USE A CHALK LINE OR LASER FOR THE STRAIGHTEST LINES.

- ▶ **Press** — Use as much downward pressure as possible with a squeegee or roller.
- ▶ **Let it sit** — Overnight is ideal. But, for busy areas, a slow forklift pass in the application direction can speed up the process.
- ▶ **Lift and peel** — Start at an edge or corner and peel slowly and continuously upward at a 90-degree angle. A scraper can help with stubborn ends.
- ▶ **Clean** — A little solvent or floor cleaner helps remove any residue.



Area Marking Services

Get peace of mind from consultation to completion

- ▶ Short on time? Leverage the experts of the Brady Safety Services team to handle the details of your floor and area marking project, including audits and installations.

See page 43 or learn more at BradyID.com/AreaMarkingServices.



Specialty Tapes & Kits

Reflective, grip or all-in-one kits — get enhanced safety for challenging applications

Some environments demand specialized safety measures. Whether you need to create durable markings on pavement, improve traction in high-risk areas or implement reflective floor marking solutions for better visibility, our specialty tapes and kits provide the solution. Discover a wide range of products designed to enhance safety and address challenges.



Application Specific

Built for specific uses and environments.



Purpose-Built Adhesion

Rough and difficult surfaces are no match for tailored adhesives.



Intuitive Guidance

Shapes and messages cue workers to take action.



Easy Setup

Kits combine precut components for easy, effective markings.



Floor Marking Kits

- Everything you need to easily create a highly visible, designated space for important equipment, work or safety zones
- Includes measured, printed and cut floor tape, corner shapes and a central floor sign
- Pre-cut materials and straightforward design ensure quick and easy installation
- Meets NFPA 70E and OSHA 1910.303 requirements
- Excellent chemical, oil and water resistance
- Assembled size: 30" x 36"



Fire Extinguisher
178546



Electrical Panel
178547



Safety Shower
178548



First Aid Kit
178549



AED
178550



Eyewash Station
178551

Anti-Skid Vinyl Floor Signs

- Anti-skid vinyl features a velvet-embossed rigid overlaminates
- Excellent chemical, oil and water resistance



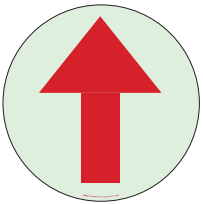
WARNING BIOHAZARD
14699



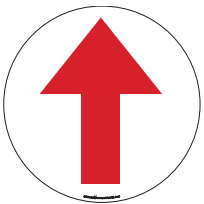
FIRST AID
29294



SAFETY SHOWER
29296



ARROW BradyGlo
49057



ARROW
49058



EXIT
49060



EXIT BradyGlo
49061



FIRE EXTINGUISHER
BradyGlo
49062



FIRST AID
49063



FIRE EXTINGUISHER
49064



Pavement Marking Tape

- Durable marking for outdoor surfaces
- Enhances safety in parking lots, roadways and other outdoor areas
- Withstands harsh weather conditions and heavy vehicle traffic
- Available in temporary or regular durability to meet your needs

Color	4 in W x 150 ft L	Description
Reflective Yellow	78264	Pavement Marking Tape
White	78263	Pavement Marking Tape
Yellow	78262	Temporary Pavement Marking Tape
White	78261	Temporary Pavement Marking Tape



Anti-Slip Hazard Cleats

- Durable grit-coated polyester die-cuts
- Ideal for use on steps and in entryways

Catalog #	Legend	Size	Qty.
78160	Caution	6 in. x 24 in.	24
78163	Watch Your Step	6 in. x 24 in.	24



Anti-Slip Hazard Marking

- Made of B-819 matte anti-slip overlamine

Catalog #	Legend	Size
92414	Caution	3 in. x 54 ft.
92415	Caution / Do Not Enter	3 in. x 54 ft.
92416	Caution / Watch Your Step	3 in. x 54 ft.
92417	Stripes Only	3 in. x 54 ft.



Anti-Slip Striped Tape

- Rugged adhesive-backed polyester tape coated with durable aluminum oxide grit is ideal for indoor and outdoor use

Catalog #	Size	Qty
78146	1 in. x 60 ft.	1 roll
78147	2 in. x 60 ft.	1 roll
78148	3 in. x 60 ft.	1 roll
78149	4 in. x 60 ft.	1 roll
78150	6 in. x 60 ft.	1 roll



Anti-Slip Floor Tape

- Adhesive-backed polyester tape coated with aluminum oxide grit
- Bonds permanently to clean, dry floors both indoors and outdoors

Color	1 in. x 60 ft.	2 in. x 60 ft.	4 in. x 60 ft.	6 in. x 60 ft.	12 in. x 60 ft.
Blk	78189	78190	78191	78193	78194
Red	78197	78198	78199	-	-
Yellow	-	78091	78092	-	-
White	-	78187	-	-	-
Clear	-	78188	-	-	-



Heavy Duty Anti-Slip Tapes

- Aggressive adhesive withstands harsh elements such as oil, fuel and grease
- High slip resistance with deeply textured silicon carbide grit
- Ideal on loading docks and ramps

Catalog #	Size	Qty
110020	2 in. x 60 ft.	1 roll
110019	4 in. x 60 ft.	1 roll
110018	6 in. x 60 ft.	1 roll
110017	12 in. x 60 ft.	1 roll



Anti-Slip Die-Cut Cleats

- Durable grit-coated polyester die-cuts

Catalog #	Legend	Size	Qty.
78161	Reflective Stripe	6 in. x 24 in.	24
78162	Photo-lum Stripe	6 in. x 24 in.	24
78195	Black	6 in. x 24 in.	50
78196	Black	5.5 in. x 5.5 in.	50



Safety Track® Resilient Tape

- Kinder, gentler product without sacrificing performance
- Easily cleaned through mopping

Catalog #	Size	Color	Qty.
98455	4 in. x 60 ft.	Black	1 roll
98459	4 in. x 60 ft.	Gray	1 roll
98457	6 in. x 24 in.	Black	50 cleats



Reflective Tape

- Made of B-957 reflective material
- Gives an extra margin of safety in low-light conditions

Color	2 in. x 15 ft.	2 in. x 30 ft.	3 in. x 15 ft.	3 in. x 30 ft.
Solid Tape				
Yellow	78986	78141	78988	78144
Orange	78989	78142	78990	78145
White	78985	78140	78987	78143
Striped Tape				
Blk/Ylw	76308	78130	76312	78133
Rd/Wh	76309	78131	76313	78134
Blk/Wh	76310	78132	-	78135
Checked Tape				
Blk/Ylw	76321	78137	-	78139
Blk/Wh	-	78136	-	78138



Warning Message Tape

- B-950 vinyl with permanent adhesive
- Colors sealed beneath protective layer of abrasion resistant clear vinyl

Catalog #	Legend	Size
58255	Caution w/ Stripes	3 in. x 60 ft.
58257	Stripes Only	3 in. x 60 ft.



Warning Tape

- B-950 vinyl with permanent adhesive stands up to tough indoor conditions
- Colors sealed beneath protective layer of abrasion resistant clear vinyl

Color	1 in. x 18 yd.	1.5 in. x 18 yd.	2 in. x 18 yd.	3 in. x 18 yd.
Striped Tape				
Blk/Ylw	55300	55301	55302	55303
Rd/Wh	55294	55295	55296	55297
Blk/Wh	55290	55291	55292	55293
Mag/Ylw	-	55312	55313	55314
Grn/Wh	-	-	90019	90020
Checked Tape				
Blk/Ylw	-	-	76317	76319
Blk/Wh	-	-	76316	76318



Biohazard Tape

- Self-sticking vinyl tape is ideal for clearly identifying biohazard areas

Catalog #	Size	Qty
88051	2 in. x 108 ft.	1 roll



Roll Mounted Dots

- B-7569 vinyl dots are designed for machine application

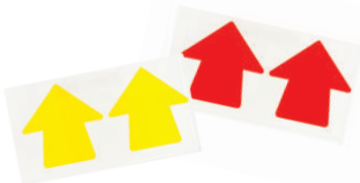
Catalog #	Color	Size	Qty.
121037	Yellow	2 in. dia.	1,000/roll
121038	Yellow	3 in. dia.	1,000/roll
121044	White	2 in. dia.	1,000/roll
121045	White	3 in. dia.	1,000/roll
121050	Green	3 in. dia.	1,000/roll



Vinyl Aisle Marking Dots

- B-7569 aisle marking vinyl dots are designed for easy hand application

Catalog #	Color	Size	Qty.
121033	Yellow	2 in. dia.	500
121034	Yellow	3 in. dia.	500
121035	Yellow	4 in. dia.	500
121036	Yellow	5 in. dia.	500
121039	Red	2 in. dia.	500
121139	Red	3 in. dia.	500
121040	Green	2 in. dia.	500
121041	Green	3 in. dia.	500
121042	White	2 in. dia.	500
121043	White	3 in. dia.	500



Vinyl Aisle Marking Arrows

- B-7569 vinyl is ideal for floor application
- Aisle marking arrows are designed for easy hand application

Catalog #	Color	Size	Qty.
121046	Yellow	2 in.	100
121047	Yellow	3 in.	100
121048	Yellow	4 in.	100
121049	Yellow	5 in.	100
121051	Red	3 in.	100



Removable Footprints

- Durable, skid-resistant footprints with removable back
- Standard package: 5 left and 5 right

Catalog #	Color	Size	Qty.
31550	Yellow	11.875 in. x 3.75 in.	5 sets
31553	Red	11.875 in. x 3.75 in.	5 sets
31551	Green	11.875 in. x 3.75 in.	5 sets
31552	Blue	11.875 in. x 3.75 in.	5 sets



Footprints

- Single footprints made of vinyl and designed for easy hand application

Catalog #	Color	Size	Qty.
Left Foot	Right Foot		
121405	121406	Yellow	12 in. 1 ea.
121402	121401	Orange	12 in. 1 ea.
121409	121410	Red	12 in. 1 ea.
121411	121412	White	12 in. 1 ea.
121407	121408	Green	12 in. 1 ea.
121400	121399	Blue	12 in. 1 ea.
121404	121403	Black	12 in. 1 ea.

LOOKING FOR GLOW?

Brady offers a wide variety of solutions, including:

- Photoluminescent
- High intensity
- Stair and egress marking

▶ See pages 38-39 or visit BradyID.com/Glow.



Paint perfect lines with stencils

- ▶ Easy-to-apply PaintStripe™ Floor Marking Stencils align to your desired layout and help you paint lines and shapes with crisp, clean edges.

▶ Visit BradyID.com for the full selection.



LED Sign & Line Projectors

Mark the unmarkable

Brady's LED sign and line projectors offer a versatile and innovative solution for even the most challenging environments. Project crisp, clear lines and safety signs onto any surface, including those that are uneven, damp, dusty or irregular. Whether you need to define walkways, highlight hazards or project vital safety messages, our projectors provide a dynamic alternative to traditional floor marking methods.



Ideal for changing and challenging areas



Waterproof design is safe for washdowns



No surface prep needed



Eliminates the cost and waste of disposable tapes and paints

CREATE YOUR LED PROJECTED LINES AND SIGNS SYSTEM

Line Projectors



Line Projector
177611 | 80W



Line Projector
177599 | 150W

Color Options



Yellow



Red



Green



Blue

Sign Projectors



Sign Projector
177626 | 60W



Sign Projector
177631 | 90W



Sign Projector
177636 | 150W

Most Popular Signs



STOP
Bar White Outline



Caution



STOP



Caution
Forklift Caution



STOP
Sign 4-Way Lines



Crosswalk
Yellow/Red/White



SLOW



Eye Protection

MANY MORE OPTIONS AVAILABLE!



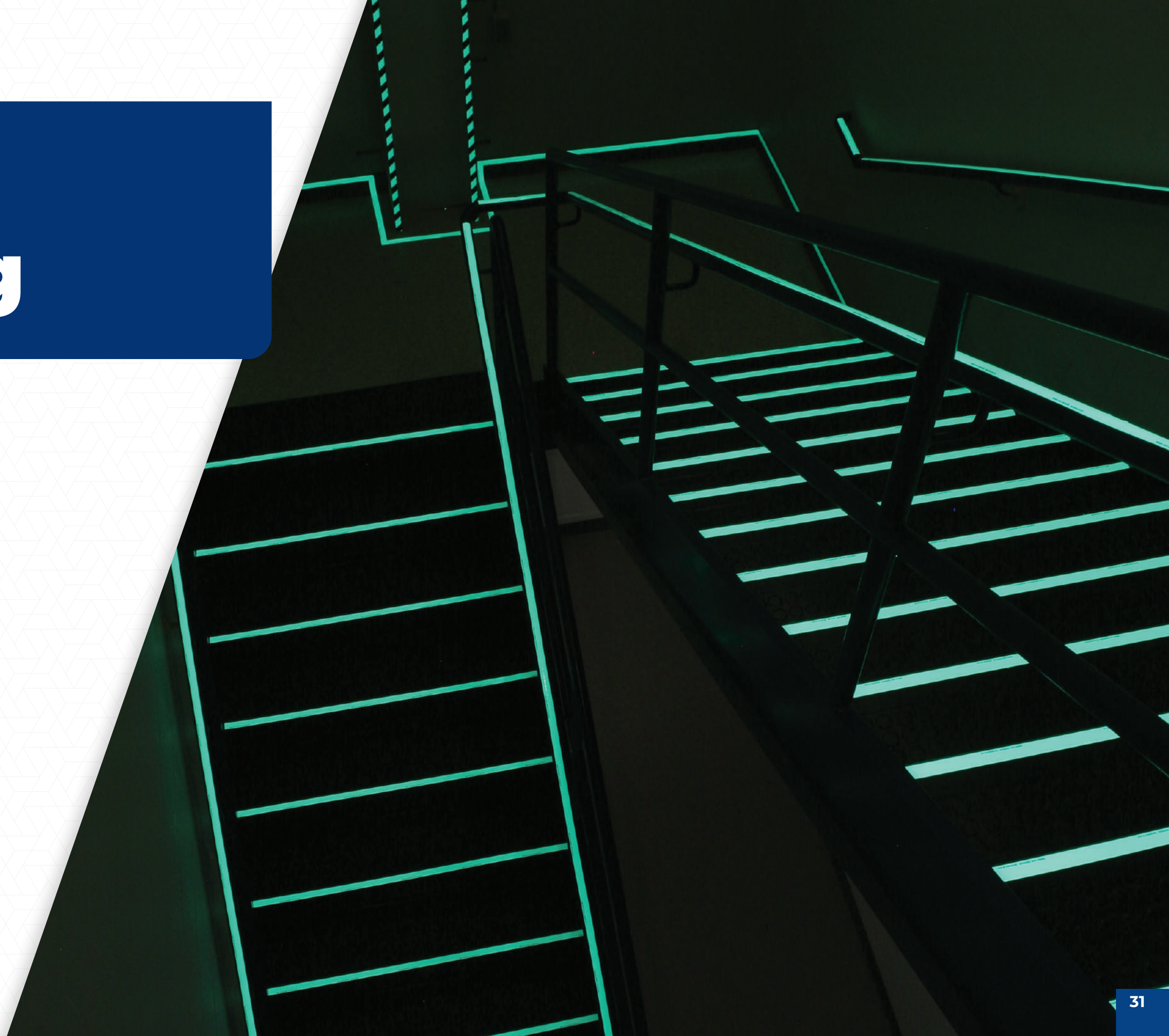
Talk to your Brady rep for assistance building out your LED solution or view the full product assortment at BradyID.com/Projectors.

Area Marking

Go beyond the floor and define any space

Effective facility marking is more than just lines on the floor. It's about establishing clear visual communication and physical barriers throughout your facility to optimize workflows and minimize workplace hazards. Our comprehensive solutions provide the tools you need to define boundaries, guide movement, protect assets and improve safety. Get the flexible, multipurpose area marking solutions you need to create a tailored system for your facility's specific needs — all from Brady.

- ▶ **Barriers, Cones & Floor Stands**
- ▶ **Mirrors, Bollards & Bumps**
- ▶ **Glow Tapes & Signs**
- ▶ **Underground & Barricade Tapes**





Barriers, Cones & Floor Stands

Control, divert and manage access for enhanced safety

Create clear boundaries and control access to areas with Brady's durable barriers, cones and floor stands. These versatile solutions are ideal for establishing pedestrian walkways, cordoning off hazardous zones and directing traffic flow. Whether you need a permanent fixture or a temporary solution, our products are designed to enhance safety and organization in any environment.



Define Boundaries
Clearly mark restricted areas and guide pedestrian traffic.



Control Access
Prevent unauthorized entry to hazardous zones or work areas.



Enhance Safety
Reduce the risk of accidents and injuries by creating safe pathways.



Stay Flexible
Take advantage of versatile solutions for a variety of applications and environments.

EasyExtend® Retractable Barrier System

- Sets up, stays up, tears down — easily and effectively
- Modular system allows single or double tape configurations
- Components store in base with carrying handle for an easy, portable solution

Parts	Item Number
 Head with Red & White Tape	1130525
 Head with Black & Yellow Tape	1130526
 Cone Adapter	1132630
 Post & Base	1130527
 Receiver Clip – Screw	1130528
 Receiver Clip – Magnetic	1130529
 Support Bracket – Screw	1130530
 Support Bracket – Magnetic	1152916

Tape & Cone Kits	Item Description	Item Number
1 Head, 1 Cone, 1 Adapter	Red & White	1132637
	Black & Yellow	1132642
2 Heads, 2 Cones, 2 Adapters	Red & White	1132638
	Black & Yellow	1132643
3 Heads, 3 Cones, 3 Adapters	Red & White	1132639
	Black & Yellow	1132644
4 Heads, 4 Cones, 4 Adapters	Red & White	1132640
	Black & Yellow	1132645
8 Heads, 8 Cones, 8 Adapters	Red & White	1132641
	Black & Yellow	1132646

Double Tape Post & Base Kits	Item Description	Item Number
2 Heads, 1 Post, 1 Base	Red & White	1132657
	Black & Yellow	1132660
4 Heads, 2 Posts, 2 Bases	Red & White	1132658
	Black & Yellow	1132661
8 Heads, 4 Posts, 4 Bases	Red & White	1132659
	Black & Yellow	1132662

- Stackable base enables compact storage and transportation
- Indoor/outdoor durable

Head & Cone Adapter Kits	Item Number
Red & White Tape	1132631
Black & Yellow Tape	1132634



Support Bracket Kits	Item Description	Item Number
1 Head, 1 Screw Bracket, 1 Screw Receiver Clip	Red & White	1132632
	Black & Yellow	1132635
1 Head, 1 Magnetic Bracket, 1 Magnetic Receiver Clip	Red & White	1132633
	Black & Yellow	1132636

Single Tape Post & Base Kits	Item Description	Item Number
1 Head, 1 Post, 1 Base	Red & White	1132647
	Black & Yellow	1132652
2 Heads, 2 Posts, 2 Bases	Red & White	1132648
	Black & Yellow	1132653
3 Heads, 3 Posts, 3 Bases	Red & White	1132649
	Black & Yellow	1132654
4 Heads, 4 Posts, 4 Bases	Red & White	1132650
	Black & Yellow	1132655
8 Heads, 8 Posts, 8 Bases	Red & White	1132651
	Black & Yellow	1132656



More barrier options available! [See the full selection at BradyID.com/Barriers](https://www.BradyID.com/Barriers).



BradyLink® Warning Post System

- Portable, non-rusting posts and chain for designating restricted areas or to guide foot and forklift traffic pathways
- Made of colorful polystyrene and polyethylene and are a decorative alternative to metal posts
- Non-conductive so can be safely used in electrically hazardous areas
- Hollow base can be filled for a more stable application
- Not intended to support heavy weight



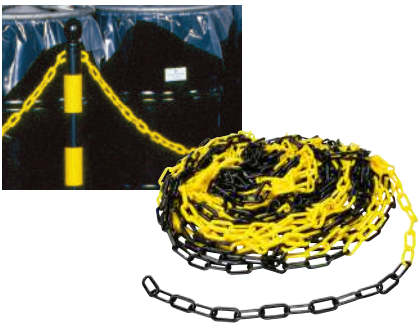
Small posts with flat base

Large with dome base

BradyLink Posts

Includes base, top and c-hook for each post

Color	Description	1 pack	6 pack
Small post with flat base			
Black	40 in. tall; 2.5 in. dia. post; 14 in. dia. flat base	80937	80943
Yellow	40 in. tall; 2.5 in. dia. post; 14 in. dia. flat base	80938	80944
Large post with dome base			
Black	41 in. tall; 3 in. dia. post; 16 in. dia. dome base	92116	92119
White	41 in. tall; 3 in. dia. post; 16 in. dia. dome base	92117	92120
Yellow	41 in. tall; 3 in. dia. post; 16 in. dia. dome base	92118	92121
Blk/Ylw Striped	41 in. tall; 3 in. dia. post; 16 in. dia. dome base	92122	92123



BradyLink Chain

- Polyethylene chain for indoor use only
- Link design prevents kinking

Catalog #	1.5 in. x 100 ft.	2 in. x 100 ft.	3 in. x 100 ft.
Yellow	78234	78238	37860
Black/Yellow	-	78254	37864
White	78235	78239	37861
Black	-	78268	-
Orange	-	78241	-
Yellow/Magenta	-	-	37865



S-Hook

C-Hook

Links, C-Hooks and S-Hooks

- S-hooks temporarily attach lengths of chain together
- C-hooks are installed on the post to allow chain or s-hook to attach to post

Catalog #	Description	Color	Qty.
C-hooks for post tops			
92011	C-hook	Black	36
92010	C-hook	White	36
S-hooks for chain			
78259	2 in. S-hook	Black	36
78257	2 in. S-hook	Yellow	36
78258	2 in. S-hook	White	36
Individual chain links			
78248	2 in. links	Black	36
78246	2 in. links	Yellow	36
78247	2 in. links	White	36



Post Sign Adapter

- Adapter locks in place on top of BradyLink Warning Posts

Color	Size	1 pack	6 pack
Black	5 in. x 1.75 in.	80958	80960
Black	6 in. x 2 in.	92135	92137
Yellow	5 in. x 1.75 in.	80959	80961
Yellow	6 in. x 2 in.	92134	92136



Tensabarrier™ Barricades

- 40 in. post with 14 in. dia. (26 lb.) base
- Pull-out belt is 7.5 ft. long

Catalog #	Description
80125	Post with Black / White Stripe Belt
80127	Post with Black / Yellow Caution - Do Not Enter Belt
58413	Wall-Mount End



Tensabarrier Signs

- Made of durable plexiglass
- 11 in. x 7 in. sign features white letters on black background

Catalog #	Legend
80129	Please Wait Here For Next Available Teller
80130	Please Wait Here For Next Available Clerk
80131	Please Wait Here For Next Available Agent



Traffic Cone Signs

- Easy to install plastic sign fits any standard traffic cone or delineator
- Legend on one side only

Catalog #	Legend	Size	Qty.
80117	Do Not Enter	10.5 in. x 12.75 in.	1
80118	Wet Floor	10.5 in. x 12.75 in.	1



Bradycone Warning Cones

- Stackable for easy storage
- High impact, weather-resistant cones
- Includes notch at top of cone to attach Bradycone chain (sold separately)

Catalog #	Description	Color	Size
77204	Blank	Orange	35 in.
77198	Blank	Yellow	25 in.
77205	Blank	Yellow	35 in.
103681	Do Not Enter	Yellow	35 in.
103682	Icy Areas	Yellow	35 in.
103683	No Parking	Yellow	35 in.
77201	Safety First	Yellow	25 in.
77203	Safety First	Yellow	35 in.
77200	Wet Floor	Yellow	25 in.
77202	Wet Floor	Yellow	35 in.
103680	Wet Floor/ Piso Mojado	Yellow	35 in.



Traffic Cones

- Vinyl construction assures flexible, yet rugged durability

Catalog #	Description	Size	Qty.
80111	Traffic Cone	18 in.	1
80112	Traffic Cone	24 in.	1



Bradystake Warning Stakes

- Rugged and flexible reinforced polymer
- Stakes available with pointed end to help drive stake into ground
- Blank stakes with no sign assembly

Catalog #	Description	Color	Size
Stakes with pointed end			
96950	Pointed end	Orange	3.75 in. x 66 in.
96951	Pointed end	Yellow	3.75 in. x 66 in.
96952	Pointed end	Blue	3.75 in. x 66 in.
96953	Pointed end	Green	3.75 in. x 66 in.
96954	Pointed end	White	3.75 in. x 66 in.
96955	Pointed end	Red	3.75 in. x 66 in.
Stakes with square end			
96920	Square end	Orange	3.75 in. x 66 in.
96921	Square end	Yellow	3.75 in. x 66 in.
Striped reflective stakes			
96922	Reflective	Org/Wht	3.75 in. x 66 in.
96923	Reflective	Blk/Ylw	3.75 in. x 66 in.



Floor Stands

- Made of durable polystyrene plastic
- Wording appears on both panels

Catalog #	Legend	Size
47243	Caution Tripping Hazard	12 in. x 20 in.
47239	Danger Persons Working Above	12 in. x 20 in.
47251	Notice Restroom Closed For Cleaning	12 in. x 20 in.



Heavy Duty Floor Stands

- Alert employees and visitors of potential floor hazards
- Made of heavy-duty polypropylene
- Wording appears on both panels

Catalog #	Legend	Height
104808	Blank	24.5 in.
104810	Caution	24.5 in.
104811	Closed	24.5 in.
104809	Wet Floor	24.5 in.



Reversible Floor Stands

- Reversible signs contain two legends; to change legend simply detach at the bottom and flip over
- Lightweight corrugated material makes it portable and easy to handle
- 12 in. x 20 in. when closed



92280



92281



92285



92286



92284



92283



92282



92288



92289



Mirrors, Bollards & Bumps

Prevent accidents with physical cues and safeguards

Sometimes, visual cues alone aren't enough. Brady's mirrors, bollards and bumps add physical safeguards to enhance visibility and prevent accidents in your facility. These solutions are ideal for blind corners, high-traffic areas and locations where extra protection is needed.



Convex



Half Dome

Safety Mirrors

- Improve visibility around corners and in tight spaces, reducing the risk of collisions
- Impact-resistant plastic mirrors improve visibility and safety by providing a wide field of vision
- Mounting hardware included

Catalog #	Descriptor	Size
86341	Indoor Convex	18 in.
86340	Indoor Convex	26 in.
86344	Full Dome 360°	48 in.
86342	Half Dome 180°	18 in.
86343	Quarter Dome 90°	18 in.



Bumps

- Alert drivers and pedestrians to changes in elevation or potential hazards, encouraging them to slow down and proceed with caution
- Easily connect multiple bumps to create custom lengths and configurations
- Made from durable materials that withstand heavy traffic and resist cracking and fading



Bollards

- Protect equipment, infrastructure and pedestrians from accidental impacts
- Various colored bollards with reflective tape enhance visibility and prevent collisions
- Industrial-grade construction provides superior impact protection for equipment and infrastructure

For a full listing of bumps and bollards, visit [BradyID.com](https://bradyid.com).



Glow Tapes & Signs

Mark a path to safety in hard-to-see places

In environments where visibility is compromised, clear and reliable photoluminescent markings are crucial for safety, compliance and efficiency. Glow-in-the-dark tapes provide essential visual cues in low-light or dark conditions, ensuring safe navigation, highlighting hazards and guiding personnel to safety in emergencies.

BradyGlo™ Floor Tapes

- B-324 phosphorescent surface printed polyester
- Designed to safely mark egress pathways during power outages and emergencies
- 10+ hours of glow life



Catalog #	Description	Size
76430	Striped Tape	2 in. x 15 ft.
76431	Striped Tape	3 in. x 15 ft.
76432	Solid Tape	2 in. x 15 ft.
76433	Solid Tape	3 in. x 15 ft.

BradyGlo™ Arrow Tape

- Exceeds ASTM E 2072-00 standard
- Designed to safely mark egress pathways during power outages and emergencies
- 10+ hours of glow life



Catalog #	Description	Size
90971	V-Arrow Tape	2 in. x 15 ft.
90972	V-Arrow Tape	3 in. x 15 ft.
90973	Arrow Tape	2 in. x 15 ft.
90974	Arrow Tape	3 in. x 15 ft.

Conformable Glow Tape

- Adheres to curved, angled or irregular surfaces
- Ideal for marking railings, bannisters and doorways
- Meets UL 1994 and ASTM 2072 standards



Catalog #	Description	Size
178458	Conformable Glow Tape	1 in. x 100 ft

Glow-in-the-Dark Anti-Slip Tape

- Self-sticking polyester in NYC approved styles
- Ideal for marking steps and landings, door frames and handrails
- 10+ hours of glow life



Catalog #	Description	Size
99048	Glow-in-the-Dark Anti-Slip Tape	1 in. x 60 ft.
99049	Glow-in-the-Dark Anti-Slip Tape	2 in. x 60 ft.
99050	Glow-in-the-Dark Anti-Slip Tape	4 in x 60 ft.

New York City Approved Glow-in-the-Dark

- Complies with RS 6-1 and 6-1A of New York Local Law 26
- Ideal for marking leading edges and perimeters



B #	Catalog #	Style	Size
B-523	81874	High-Intensity Tape	1 in W x 250 ft L
B-523	81870	High-Intensity Hazard Tape	1 in W x 250 ft L
B-523	81873	Explosion-safe High Intensity Marking Tape	1 in W x 50 ft L
B-523	81869	High-Intensity Hazard Tape	1 in W x 50 ft L
B-523	81867	"L" Shaped Stair Markers	9 in H x 3 in W
B-523	81711	"L" Shaped Stair Markers	9 in H x 3 in W
B-523	81868	"L" Shaped Stair Markers	9 in H x 3 in W
B-564	81729	High Intensity Marking Tape	1 in W x 50 ft L
B-564	81730	High-Intensity Anti-Slip Tape	1 in W x 250 ft L
B-564	81735	Anti-Slip "L" Shaped Stair Markers	9 in H x 3 in W
B-564	81733	Anti-Slip "L" Shaped Stair Markers	9 in H x 3 in W

Glow-in-the-Dark Shapes

- Ideal for marking aisles, passageways and storage locations
- Features 10+ hour glow life



Catalog #	Description	Size	Qty.
93275	Glow-in-the-Dark Arrows	3 in. x 3 in.	100
55359	Glow-in-the-Dark Footprints - Right Foot	12 in. x 3.5 in.	1 ea.
55358	Glow-in-the-Dark Footprints - Left Foot	12 in. x 3.5 in.	1 ea.
58315	Glow-in-the-Dark Dots	2 in Dia	100

Glow-in-the-Dark Exit Sign

- Exceeds ASTM E 2072-00 standard
- Designed to safely mark egress pathways during power outages and emergencies
- 10+ hours of glow life



Catalog #	Color	Number of Printed Sides	Size
1149962	White on Black	1	8.75" x 15.5"
1149963	Green on White	1	8.75" x 15.5"
1149964	White on Red	1	8.75" x 15.5"
1149965	White on Black	2	8.75" x 15.5"
1149966	Green on White	2	8.75" x 15.5"
1149967	White on Red	2	8.75" x 15.5"

Framed Glow-in-the-Dark Exit Sign

- Exceeds ASTM E 2072-00 standard
- Designed to safely mark egress pathways during power outages and emergencies
- 10+ hours of glow life



Catalog #	Description	Size
1056876	Green/White	7.5 in. x 13 in.
1056877	Red/White	7.5 in. x 13 in.

BradyGlo Signs

- Photoluminescent material charges in 5 minutes
- 10+ hours of glow life

Catalog #	Description
90175	BradyGlo Caution Slippery Surface. Sign
90518	BradyGlo Bilingual Fire Extinguisher Sign
90187	BradyGlo In Case Of Fire Do Not Use Elevators Use Stairways Sign
73661	BradyGlo Fire Extinguisher Sign
90199	BradyGlo Wear Respirator Sign
SV144G	BradyGlo fire Extinguisher Sign
90100	BradyGlo Fire Door Do Not Block Sign
90107	BradyGlo IN CASE OF FIRE Do Not Use Elevators Use Stairways Sign



► For more sign options, visit [BradyID.com/Glow](https://bradyid.com/Glow).

24/7 Visibility

Ensure clear markings day and night.

Enhance Safety

Reduce the risk of accidents in low-light areas.

Reliable Guidance

Direct personnel to safety, even in emergencies.

Versatile Solutions

Adaptable to a wide range of applications and surfaces.



Underground & Barricade Tapes

Protect utilities, pathways and people

Brady's underground and barricade tapes offer reliable guidance and enhanced safety in even the most challenging environments. These durable solutions are ideal for marking utility lines, egress pathways and hazardous areas where consistent visibility and identification are critical.



Protect Utilities
Clearly mark underground lines to prevent costly damage.



Enhance Safety
Identify hazards and guide personnel in challenging environments.



Durable Solutions
Withstand harsh conditions for long-lasting performance.



Critical Identification
Ensure clear markings for essential infrastructure and safety areas.



Identoline® Underground Warning Tape

- Made of heavy-duty B-720 polyethylene
- Tape is 4.0-mil. thick with a tough tensile strength of 1750 psi
- Uses American Public Works Association (APWA) color coding
- Overcoated graphics provide long-lasting legibility and hold color values

Catalog #	Utility Class	Size	APWA Color
63009	Cable T.V.	6 in. x 1,000 ft.	Orange
91295	Electric*	3 in. x 1,000 ft.	Red
91296	Electric	6 in. x 1,000 ft.	Red
91294	Gas	6 in. x 1,000 ft.	Yellow
91299	Sewer	6 in. x 1,000 ft.	Green
91297	Telephone	6 in. x 1,000 ft.	Orange
63050	Reclaimed Water	6 in. x 1,000 ft.	Purple
91298	Water	6 in. x 1,000 ft.	Blue

*Legend appears on one line



Detectable Identoline® Warning Tape

- B-721 metal detectable polyester; foil is 4.5-mils
- Subsurface graphics seal the legend from acids, alkalis and soil substances
- Uses American Public Works Association (APWA) color coding
- Meets OSHA regulation covering location of underground utility lines
- Manual or automatic installation 4 in. to 6 in. below surface for detectability

Catalog #	Utility Class	Size	APWA Color
91601	Electric	2 in. x 1,000 ft.	Red
91606	Fiber Optic	2 in. x 1,000 ft.	Orange
91600	Gas	2 in. x 1,000 ft.	Yellow
91604	Sewer	2 in. x 1,000 ft.	Green
91603	Water	2 in. x 1,000 ft.	Blue



Flagging Tape

- Flag boundary stakes, trees and hazardous areas
- Non-adhesive

Catalog #	Size	Color
58347	1.187 in. x 300 ft.	Yellow
58342	1.187 in. x 300 ft.	White
58343	1.187 in. x 300 ft.	Green
58344	1.187 in. x 300 ft.	Orange
58345	1.187 in. x 300 ft.	Blue
58346	1.187 in. x 300 ft.	Red
58348	1.187 in. x 150 ft.	Fluor. Yellow
58349	1.187 in. x 150 ft.	Fluor. Red
58351	1.187 in. x 150 ft.	Fluor. Blue
58352	1.187 in. x 150 ft.	Fluor. Orange
58353	1.187 in. x 150 ft.	Fluor. Green
58354	1.187 in. x 150 ft.	Fluor. Pink



Biodegradable Flagging Tape

- Made of 70% wood fiber
- Non-toxic; will not harm wildlife, livestock or the environment
- Complete degradation will occur in 6-12 months

Catalog #	Legend	Size	Color
91090	Caution	3 in. x 150 ft.	Blk/Ylw
91091	Caution Do Not Enter	3 in. x 150 ft.	Blk/Ylw
91092	Caution Men Working Overhead	3 in. x 150 ft.	Blk/Ylw
91088	Danger	3 in. x 150 ft.	Blk/Rd
91089	Danger Do Not Enter	3 in. x 150 ft.	Blk/Rd



Utility Marking Flags

- Ideal for identifying possible hazards buried underground
- 4 in. x 5 in. flags attached to 30 in. steel rod

Catalog #	Legend	Color	Qty.
98165	Buried Sewer Line	Blk/Grn	100
98166	Buried Cable	Blk/Rd	100
98167	Buried Water Line	Wht/Blu	100
98168	Buried Electric Line	Blk/Rd	100
98169	Buried Fiber Optic Cable	Blk/Org	100
98170	Buried Pipeline	Wht/Blu	100
98171	Buried Gas Line	Blk/Ylw	100
98172	(Blank)	Orange	100
98173	(Blank)	Red	100
98174	(Blank)	Yellow	100
98175	(Blank)	Blue	100
98176	(Blank)	White	100
98177	(Blank)	Green	100
98178	(Blank)	Fluor. Red	100



Woven Barricade Tape

- Made of B-903 polypropylene
- Contains ultraviolet inhibitors for permanent outdoor marking

Catalog #	Size	Size
91172	0.75 in. x 150 ft.	Black/Yellow
91173	0.75 in. x 150 ft.	Magenta/Yellow
91175	0.75 in. x 150 ft.	Black/Red
91176	2 in. x 200 ft.	Black/Yellow
91179	2 in. x 200 ft.	Black/Red



Reinforced Barricade Tape

- Provides fast, on-the-spot warning
- 250-lbs. tensile strength
- Standard package: one roll

Catalog #	Legend	Size
91100	Caution/Cuidado	3 in. x 500 ft.
91101	Caution Construction Area	3 in. x 500 ft.
91102	Caution Do Not Enter	3 in. x 500 ft.
91103	Caution Men Working	3 in. x 500 ft.
91104	Striped	3 in. x 500 ft.



Re-Pulpable Barricade Tape

- Made of 100% woven, biodegradable cotton material
- Tape will break down if accidentally introduced into the system

2 in. x 150 ft.	3 in. x 150 ft.	Legend	Color
91082	91083	Caution	Blk/Ylw
91086	91084	Danger	Blk/Red
-	91087	Danger Do Not Enter	Blk/Ylw
-	91085	Danger Do Not Enter	Blk/Red



Economy Barricade Tape

- Made of lightweight non-adhesive polyethylene
- Ideal for temporary use outdoors or permanent indoor warning

Catalog #	Size	Qty.
91228	1 in. x 100 ft.	1 roll
91237	1 in. x 500 ft.	1 roll
91229	2 in. x 200 ft.	1 roll
91238	3 in. x 500 ft.	1 roll



Pennant Barricade Tape

- Tough and durable flag barricade can be used repeatedly
- Pennants are 18 in. x 18 in. and spaced evenly across tape

Catalog #	Description
58388	83 ft. with 15 Pennants
58389	113 ft. with 25 Pennants



Tape sold separately

Tape Tender

- Dispenses any 2 in. or 3 in. plastic tape rolls up to 1,000 ft.
- Tape advances as needed using thumb
- Steel cutting blade cuts fast and smooth

Catalog #	Legend	Qty.
72412	Tape Tender	1



Barricade Tape

- Non-adhesive B-912 polyethylene tapes provide fast, on-the-spot warnings
- Use for temporary outdoor or permanent indoor use
- Lightweight tape can be tied, stapled or nailed to posts, fences or metal barricades
- Custom legends also available

3 in. x 200 ft.	3 in. x 1000 ft.	Legend	Color
91468	91462	Authorized Personnel Only	Blk/Ylw
91214	91454	(Blank - Blk/Yellow Stripes Only)	Blk/Ylw
91212	-	Caution	Blk/Ylw
91447	91448	Caution Biohazard	Blk/Org
91469	91463	Caution Chemical Hazard	Blk/Ylw
91217	91453	Caution Construction Area	Blk/Ylw
91224	91451	Caution Do Not Enter	Blk/Ylw
91220	91458	Caution High Voltage	Blk/Ylw
91215	91452	Caution Men Working	Blk/Ylw
91227	91457	Caution Open Trench	Blk/Ylw
91470	91464	Caution Radiation Hazard	Mag/Ylw
91256	91257	Confined Space Do Not Enter	Blk/Ylw
91200	91201	Danger	Blk/Red
91213	91455	Danger	Blk/Ylw
91255	91456	Danger Asbestos Dust Hazard	Blk/Ylw
-	102823	Danger Asbestos Dust Hazard (w/Stripes)	Blk/Red/Wht
-	102822	Danger Confined Space (w/Stripes)	Blk/Red/Wht
-	101349	Danger Keep Out	Blk/Red
102821	-	Do Not Enter (w/Stripes)	Blk/Red
102824	-	Do Not Enter	Blk/Red

EXPERT AREA MARKING SERVICES

Enjoy peace of mind from consultation to completion

GET A PERSONALIZED APPROACH FOR A TRULY CUSTOMIZED SOLUTION



Audits

With the help of a Brady application engineer, we'll guide you toward an effective, compliant solution. Your on-site audit includes:

- Floor inspection
- Mapping your facility
- Material estimate



Installation

Save time and achieve a safe and compliant work environment with professional installation services. Our experts handle:

- Project planning and layout
- Surface preparation and application
- Cleanup



Safety First



Projects Made Easy



Compliance Confidence



Efficiency Unleashed

Visit BradyID.com/AreaMarkingServices or contact your Brady rep to schedule a consultation.



We make products that make the world a safer and smarter place. From the depths of the ocean to outer space, from the factory floor to the delivery room — **we're just about everywhere you look.**

- For more information or to learn more about our innovative products, visit BradyID.com or call 1-888-272-3946.

USA
Customer Service: 1-888-272-3946
BradyID.com

Canada
Customer Service: 1-800-263-6179
BradyCanada.ca

Mexico
Customer Service: 1-800-262-7777
Inside Sales: 1-800-262-7777 ext 177
BradyID.com.mx



Y7285693 MS7285693