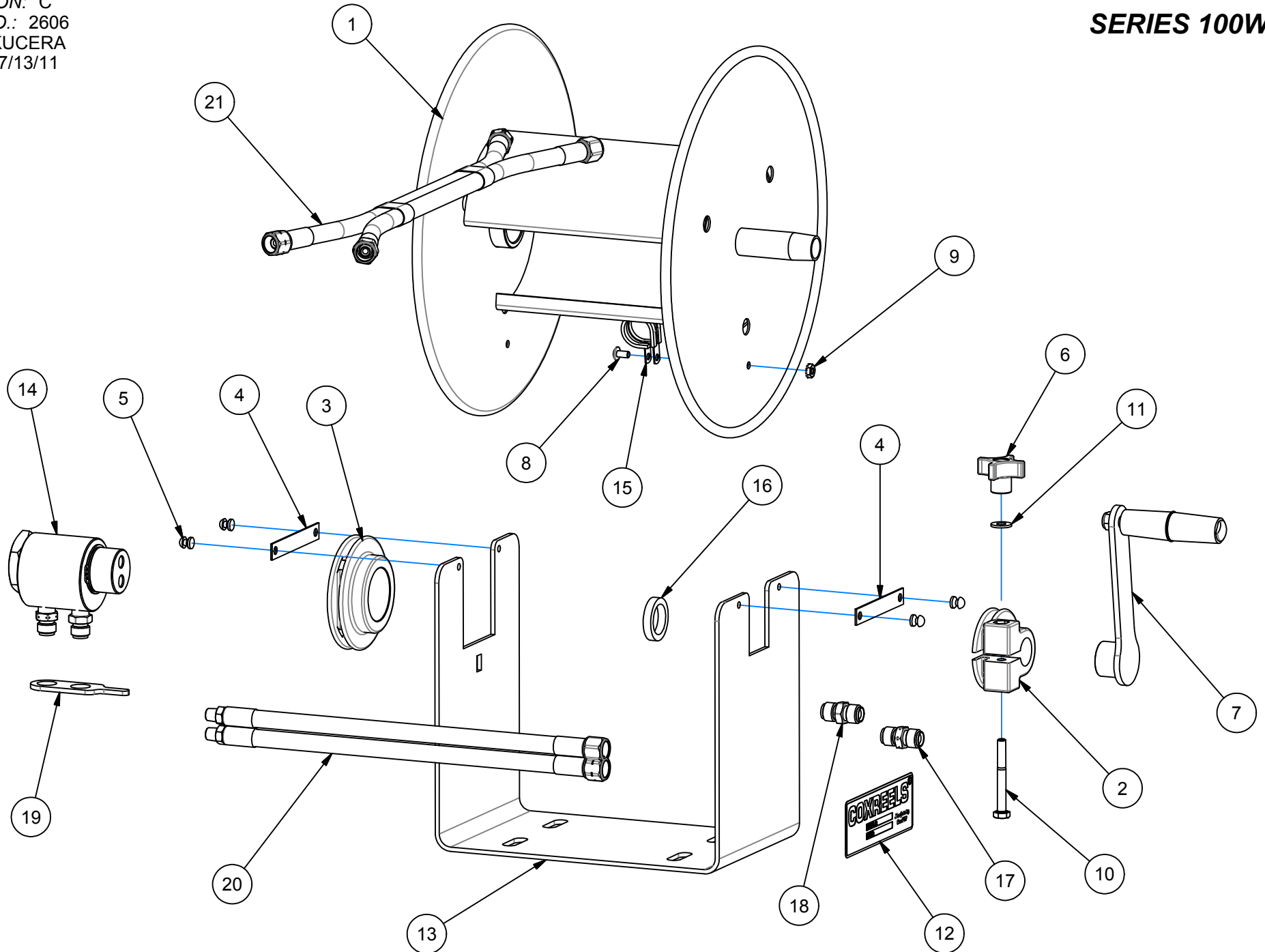


EXP-40W

REVISION: C
ECO NO.: 2606
BY: JKUCERA
DATE: 7/13/11

COXREELS

SERIES 100W



COMMON PARTS TO 100W WELDING HOSE CHALLENGER REELS

DETAIL ITEM NO.	PART NO.	DESCRIPTION	112W-1-50	112WT-1-50	112W-1-100	112WT-1-100	117W-1-200	117WT-1-200
1	8554	ASSEMBLY: DRUM, OXY-ACETYLENE, 12" DIA. X 8"	-	-	1	1	-	-
	8554-4	ASSEMBLY: DRUM, OXY-ACETYLENE, 12" DIA. X 4-1/2"	1	1	-	-	-	-
	8899-8	ASSEMBLY: DRUM, 117W, 17"	-	-	-	-	1	1
2	6329-1-1	BEARING: MOLDED, CRANK SIDE	1	1	1	1	1	1
3	8552	BEARING: 1-5/8" COMPOSITE	1	1	1	1	1	1
4	15711-1	PLATE: BEARING KEEPER	2	2	2	2	2	2
5	7105	RIVET: 3/16" DIA. X .25" GRIP	4	4	4	4	4	4
6	15719	KNOB: BLACK PHOENOLIC, 1/4-20	1	1	1	1	1	1
7	7272-1	ASSEMBLY: CRANK	1	1	1	1	1	1
8	245	SCREW: #10-32 X 3/8" PHILLIPS HEAD	1	1	1	1	1	1
9	130	NUT: #10-32 KEPS	1	1	1	1	1	1
10	7146	BOLT: 1/4-20 X 2-1/4" HEX	1	1	1	1	1	1
11	688	WASHER: 1/4" FLAT	1	1	1	1	1	1
12	10925-5	LABEL: STANDARD	1	1	1	1	1	1
13	8553-8	FRAME: 'U', 8"	-	-	1	1	-	-
	8553-4	FRAME: 'U', 4-1/2"	1	1	-	-	-	-
	8898-8	FRAME: "U" 117W SERIES, 8"	-	-	-	-	1	1
14	8550	ASSEMBLY: SWIVEL, OXY-ACETYLENE	1	1	1	1	1	1
15	382	CLAMP: HOSE #14	1	1	1	1	1	1
16	7145	SPACER: CHALLENGER REEL	1	1	1	1	1	1
17	8562	ADAPTER: ACETYLENE WELDING HOSE	1	1	1	1	1	1
18	8561	ADAPTER: OXYGEN WELDING HOSE	1	1	1	1	1	1
19	8573	RETAINER: WELDING SWIVEL	1	1	1	1	1	1
20	5423-1	ASSEMBLY: 1/4" X 12" 'R' GRADE DUAL WELDING HOSE	1	-	1	-	1	-
	5424-1	ASSEMBLY: 1/4" X 12" 'T' GRADE DUAL WELDING HOSE	-	1	-	1	-	1
21*	5423-50	ASSEMBLY: 1/4" X 50' 'R' GRADE DUAL WELDING HOSE	1	-	-	-	-	-
	5423-100	ASSEMBLY: 1/4" X 100' 'R' GRADE DUAL WELDING HOSE	-	-	1	-	-	-
	5423-200	ASSEMBLY: 1/4" X 200' 'R' GRADE DUAL WELDING HOSE	-	-	-	-	1	-
	5424-50	ASSEMBLY: 1/4" X 50' 'T' GRADE DUAL WELDING HOSE	-	1	-	-	-	-
	5424-100	ASSEMBLY: 1/4" X 100' 'T' GRADE DUAL WELDING HOSE	-	-	-	1	-	-
	5424-200	ASSEMBLY: 1/4" X 200' 'T' GRADE DUAL WELDING HOSE	-	-	-	-	-	1

*FOR LESS HOSE MODELS, EXCLUDE ITEM 21.