

Parts Manual  
45-8006  
PL30-1011  
04/25/2011

# DOTCO®

## 10-11 Series Inline Extended Grinders



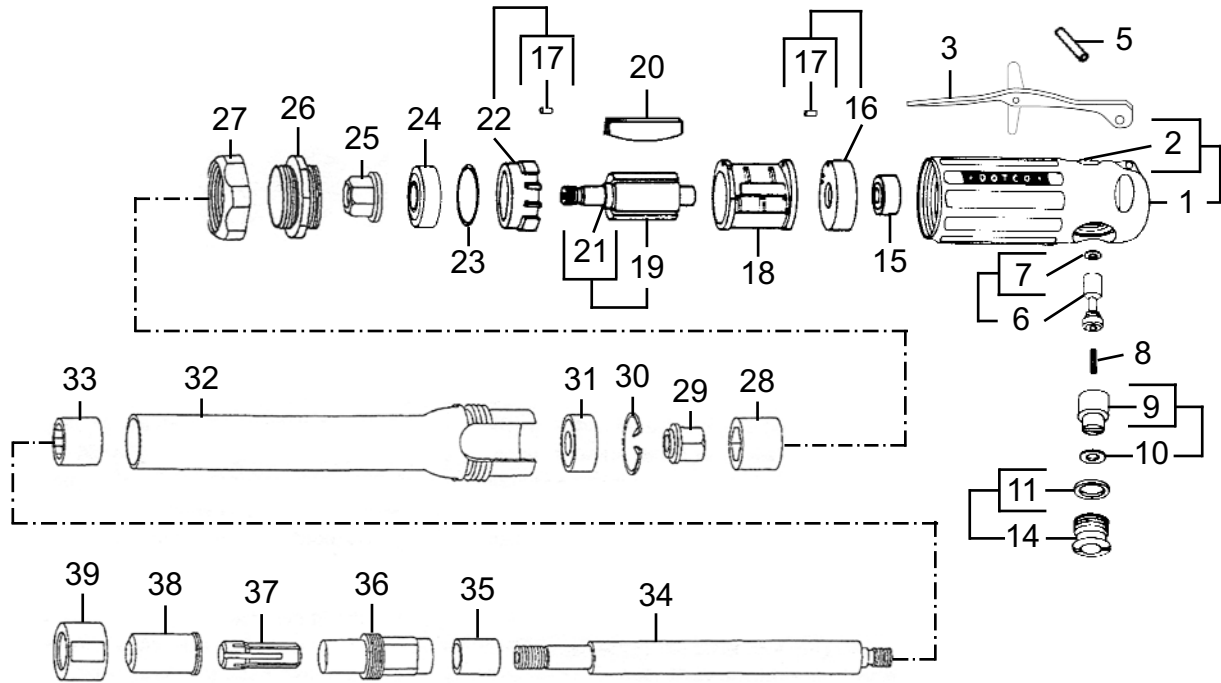
Throttle Type	Free Speed (RPM)				Termination
	3" Extension		5" Extension		
	28,000	25,000	28,000	25,000	300 Collet
Button	10B1100	10B1111	10B1101	10B1112	-36
Lock-Off Lever	10K1100	10K1111	10K1101	10K1112	-36
Locking Lever	10L1100	10L1111	10L1101	10L1112	-36

For additional product information visit our website at <http://www.apextoolgroup.com>

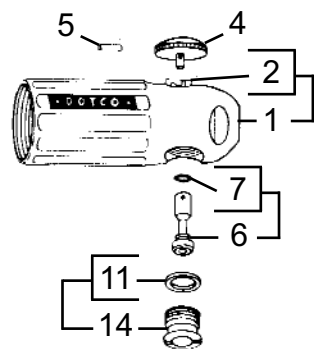
# DOTCO 10-11 Series Inline Extension Grinder

**"A"**

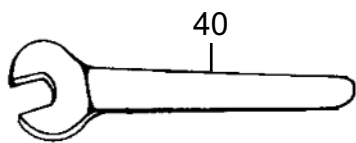
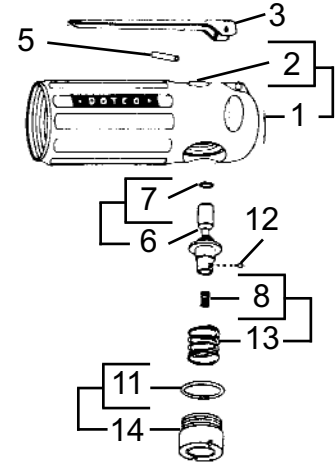
**"L" Latching Lever Throttle**



**"B" Button Throttle**



**"K" Lock Off Lever Throttle**



**Illustration "A" - 10-11 Series Inline Extension Grinder**

Ref.	Number	#	●	Kit	EN	DE	FR	ES	IT
					Description	Benennung	Description	Descripción	Descrizione
1	Table A	1			Motor Housing	Motorgehäuse	Cage de moteur	Caja del motor	Corpo motore
2	Table A	1			* Valve Bushing	Lagerbuchse	Douille	Casquillo	Boccola
3	Table A	1			Lever	Hebel	Levier	Palanca	Leva
4	1039	1			Button	Drucktaste	Bouton	Botón	Pulsante
5	Table A	1			Pin	Stift	Goupille cylindrique	Pasador	Spina
6	Table A	1			Valve Stem	Ventilschaft	Tige de soupape	Vástago de válvula	Asta valvola
7	1052	1			O-Ring	O-Ring	Joint torique	Anillo "O"	Anello ad O
8	Table A	1			Valve Spring	Ventilfeder	Printemps de soupape	La Primavera de la válvula	Primavera di valvola
9	1011	1			Speed Regulator	Regler	Régulateur	Regulador	Regolatore
10	1056	1			O-Ring	O-Ring	Joint torique	Anillo "O"	Anello ad O
11	1057	1			O-Ring	O-Ring	Joint torique	Anillo "O"	Anello ad O
12	4180	1			Ball	Kugel	Bille	Bolas	Sfera
13	1642	1			Spring	Druckfeder	Ressort	Resorte	Molla
14	Table A	1			Plug Assembly	Buchse	Bouchon	Tapón	Spina
15	504	1			Ball Bearing	Kugellager	Roulement à billes	Cojinete de bolas	Cuscinetto a sfera
16	1003	1			Bearing Plate	Tragplatte	Plaque de support	Placa de asiento	Piattello cuscinetto
17	1041	2			Locating Pin	Stift	Goupille cylindrique	Pasador	Spina
18	1002	1			Cylinder	Zylinder	Cylindre	Cilindro	Cilindro
19	Table A1	1			Rotor	Rotor	Rotor	El rotor	Il rotore
20	Table A1	--			** Rotor Blade	Rotorblatt	Palette	Alabe del rotor	Paletta del rotore
21	1017	1			Spacer	Distanzstück	Entretoise	Espaciador	Distanziale
22	1064	1			Bearing Plate	Tragplatte	Plaque de support	Placa de asiento	Piattello cuscinetto
23	1355	1			Shim Packet	Unterlegstück	Cale pelable	Calzo	Spessore
24	538	1			Ball Bearing	Kugellager	Roulement à billes	Cojinete de bolas	Cuscinetto a sfera
25	1708	1			Drive Coupling	Kupplung	Couplage	Acoplamiento	Accoppiamento
26	1043	1			Lock Ring	Verschlussring	Bague de verrouillage	Anillo de cierre	Anello di bloccaggio
27	1032	1			Cap	Kappe	Chapeau	Tapa	Cappello
28	02-1711	1			Coupling	Kupplung	Couplage	Acoplamiento	Accoppiamento
29	1707	1			Coupling Nut	Koppe Ind Schraubenmutter	Attelage Écrou	Enganche Tuerca	Agganciam ento Nocchia
30	1098	1			Snap Ring	Schnapping	Segment int.	Aro de resorte	Anello elastico
31	505	1			Ball Bearing	Kugellager	Roulement à billes	Cojinete de bolas	Cuscinetto a sfera
32	Table A1	1			Spindle Housing	Spindelgehäuse	Cage à pignons	Caja del husillo	Corpo mandrino
33	1514	1			Needle Bearing	Nadellager	Cage à aiguilles	Cojinete de agujas	Cuscinetto a rulli
34	Table A1	1			Spindle	Spindel	Arbre	Husillo	Mandrino
35	1562	1			Sleeve	Hülse	Douille	Manguito	Manicotto
36	1054	1			Chuck Body	Futter Körper	Corps de trou	Bote el Cuerpo	Il Corpo di ciottolo
37	Table A2	1			Collet	Futter	Douille de serrage	Boquilla	Bussola di chiusura
38	1053	1			Nosepiece	Kopfstück	Tuyère	Tobera	Naso
39	1058	1			Collet Chuck Cap	Kappe	Chapeau	Tapa	Cappello
40	14-0807	1			Wrench (7/16")	Schraubenschlüssel	Clé plate	La llave	La chiave
	14-0811	1			Wrench (11/16")	Schraubenschlüssel	Clé plate	La llave	La chiave
<b>Repair Kits:</b>									
**	04-0031	1			Rotor Blade Kit	Satz	Ensemble	Juego	Corredo

(#) Quantity / Stückzahl / Quantité / Cantidad / Quantità

\* Note: If necessary to replace valve bushing, press bushing, beveled end first, into threaded end of crosshole of motor housing. The valve bushing base should be .562" plus .005" from counterbored shoulder of crosshole. Hone inside diameter of valve bushing to .2509" plus .0003" diameter.

\*\* Note: Rotor Blade Kit contains 50 pieces

PL30-1011

May 15, 2006

**DOTCO**

**10-11 Series Inline Extension Grinder**

Table "A"

Ref.	Description	Qty.	10B1100	Qty.	10K1100	Qty.	10L1100
			10B1101		10K1101		10L1101
			10B1111				10L1111
			10B1112				10L1112
1	Motor Housing	1	1051	1	1001	1	1001
2	Valve Bushing	1	1037	1	1007	1	1007
3	Lever		---	1	1019	1	01-1267
5	Pin	1	1055	1	1042	1	1042
6	Valve Stem	1	1038	1	1644	1	1008
8	Valve Spring		---	1	1641	1	2015
14	Plug Assembly	1	1012	1	1643	1	1012

Table "A1"

Ref.	Description	Qty.	10-1100	Qty.	10-1101	Qty.	10-1111	Qty.	10-1112
19	Rotor	1	1005	1	1005	1	1213	1	1213
20	Rotor Blade **	4	1006	4	1006	5	1006	5	1006
32	Spindle Housing	1	1736	1	1737	1	1736	1	1737
34	Spindle	1	1748	1	1561	1	1748	1	1561

\*\* Note: Rotor Blade Kit contains 50 pieces

Table "A2" - Optional Collets

Part No.	Arbor Size	Part No.	Arbor Size	Part No.	Arbor Size
301	3/64"	305	5/32"	310	6mm
302	5/64"	306	3/16"	311	3mm
303	3/32"	307	7/32"		
304	1/8"	308 *	1/4"		

\* Standard Collet







## Sales & Service Centers

**Note:** All locations may not service all products. Please contact the nearest Sales & Service Center for the appropriate facility to handle your service requirements.

Dallas, TX  
**Apex Tool Group  
Sales & Service Center**  
1470 Post & Paddock  
Grand Prairie, TX 75050  
Tel: 972-641-9563  
Fax: 972-641-9674

Detroit, MI  
**Apex Tool Group  
Sales & Service Center**  
2630 Superior Court  
Auburn Hills, MI 48326  
Tel: 248-391-3700  
Fax: 248-391-7824

Houston, TX  
**Apex Tool Group  
Sales & Service Center**  
6550 West Sam Houston  
Parkway North, Suite 200  
Houston, TX 77041  
Tel: 713-849-2364  
Fax: 713-849-2047

Lexington, SC  
**Apex Tool Group**  
670 Industrial Drive  
Lexington, SC 29072  
Tel: 800-845-5629  
Tel: 803-951-7544  
Fax: 803-358-7681

Los Angeles, CA  
**Apex Tool Group  
Sales & Service Center**  
15503 Blackburn Avenue  
Norwalk, CA 90650  
Tel: 562-623-4457  
Fax: 562-802-1718

Seattle, WA  
**Apex Tool Group  
Sales & Service Center**  
2865 152nd Avenue N.E.  
Redmond, WA 98052  
Tel: 425-497-0476  
Fax: 425-497-0496

York, PA  
**Apex Tool Group  
Sales & Service Center**  
3990 East Market Street  
York, PA 17402  
Tel: 717-755-2933  
Fax: 717-757-5063

Canada  
**Apex Tool Group  
Sales & Service Center**  
5925 McLaughlin Road  
Mississauga, Ont. L5R 1B8  
Canada  
Tel: 905-501-4785  
Fax: 905-501-4786

Germany  
Cooper Power Tools  
GmbH & Co. OHG  
a company of  
Apex Tool Group, LLC  
Industriestraße 1  
73463 Westhausen  
Germany  
Tel: +49 (0) 73 63 81 0  
Fax: +49 (0) 73 63 81 222

England  
Cooper Power Tools  
GmbH & Co. OHG  
a company of  
Apex Tool Group, LLC  
C/O Spline Gauges  
Piccadilly, Tamworth  
Staffordshire B78 2ER  
United Kingdom  
Tel: +44 1827 8741 28  
Fax: +44 1827 8741 28

France  
Cooper Power Tools SAS  
a company of  
Apex Tool Group, LLC  
25 rue Maurice Chevalier  
77330 Ozoir-La-Ferrière  
France  
Tel: +33 1 6443 2200  
Fax: +33 1 6443 1717

China  
Cooper (China) Co., Ltd.  
a company of  
Apex Tool Group, LLC  
955 Sheng Li Road,  
Heqing Pudong, Shanghai  
China 201201  
Tel: +86-21-28994176  
Fax: +86-21-51118446

Mexico  
Cooper Tools  
de México S.A. de C.V.  
a company of  
Apex Tool Group, LLC  
Vialidad El Pueblito #103  
Parque Industrial Querétaro  
Querétaro, QRO 76220  
Mexico  
Tel: +52 (442) 211-3800  
Fax: +52 (442) 103-0443

Brazil  
Cooper Tools Industrial Ltda.  
a company of  
Apex Tool Group, LLC  
Av. Liberdade, 4055  
Zona Industrial - Iporanga  
SP Brazil  
Tel: +55 15 2383929  
Fax: +55 15 2383260

Hungary  
Cooper Tools Hungaria Kft.  
a company of  
Apex Tool Group, LLC  
Berkenyefa sor 7  
Pf: 640  
9027 Győr  
Hungary  
Tel: +36 96 66 1383  
Fax: +36 96 66 1135

Apex Tool Group, LLC  
1000 Lufkin Road  
Apex, NC 27539  
Phone: 919-387-0099  
Fax: 919-387-2614  
www.apextoolgroup.com

# DOTCO®