

Parts Manual
45-8179EN
11/29/2012

DOTCO[®]

12R03 Series
0.1 HP Vertical Pencil Grinder



For additional product information visit our website at <http://www.apextoolgroup.com>

Dotco®
Nomenclature

12	R	03	-	X	X
-----------	----------	-----------	----------	----------	----------

Series

12 = Ergo Grinder

Throttle Type

R = Roll Throttle

Motor Size

03 = 0.1 hp

Overhose Length

1 = 1' (0.3M)

2 = 2' (0.6M)

4 = 4' (1.2M)

Collet Size

2 = 2.35 mm

3 = 3.00 mm

6 = 3/32"

8 = 1/8"

Description and Instructions

Language Version:

This Parts Manual is the *“Original Instructions”* intended for all persons who will use or repair these tools.

Product Identification:

Refer to the “Model Nomenclature” page in this document.

Noise and Vibration:

Refer to documents CE-1007DC and CE-1007TD.

General Description:

Air powered gearless right angle pencil grinder with rear exhaust.

Intended Use:

These grinders are intended for material removal applications. Use only for their designated purpose. Do not use as a hammer, lever or other improper usage that can cause tool damage and operator injury.

Copyright protection:

Apex Tool Group, LLC reserves the right to modify, supplement or improve this document or the product without prior notice. This document may not be reproduced in any way, shape or form, in full or parts thereof, or copied to another natural or machine readable language or to a data carrier, whether electronic, mechanical, optical or otherwise without the express permission of Apex Tool Group, LLC.

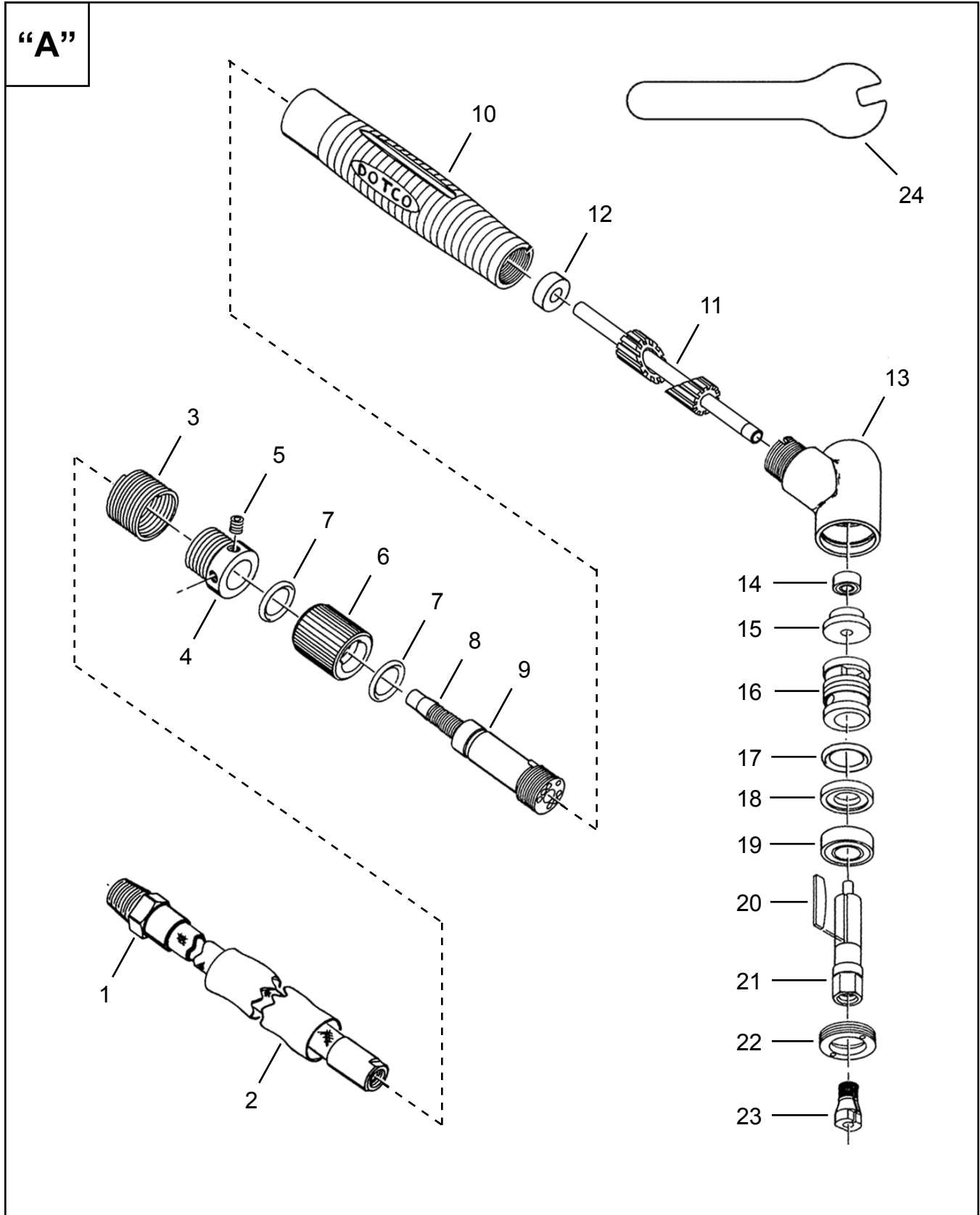
General Safety:

Refer to General Safety document, CE-2007 for general safety operating instructions for this equipment.

Lubrication:

Refer to lubrication document, PL65-LUB, for general lubrication instructions.

Dotco®
12R03 Vertical Pencil Grinder



Dotco®
12R03 Vertical Pencil Grinder

45-8179EN
11/29/2012

Illustration "A"

Ref	Number	#	X	EN	
				Description	
1	45-0948	1		Whip Hose Assembly (3/16" x 5')	
2	Table "A"	1		Overhose Assembly	
3	6061PT	1	1	Overhose Spring	
4	01-0917	1		Exhaust Adapter	
5	6057PT	1	2	Set Screw	
6	01-0935	1		Roll Valve (includes Ref. 7)	
7	6050PT	2	6	O-Ring	
8	01-0929	1		Valve Body (includes Ref. 9)	
9	954PT	1	2	Pin	
10	01-6060	1		Housing	
11	01-0912	1		Inlet Tube (includes Ref. 12)	
12	01-0916	1	3	Muffler	
13	01-0913	1		Angle Housing	
14	585PT	1	2	Ball Bearing	
15	01-0900	1		Rear Plate	
16	01-0905	1		Cylinder (includes Ref. 17)	
17	1057PT	1	3	O-Ring	
18	01-0906	1		Front Plate	
19	583PT	1	2	Ball Bearing	
20	01-0907	3	9	Rotor Blade	
21	01-0910	1		Rotor	
22	01-0909	1		Lock Ring	
23	Table "A1"	1	2	Collet	
24	14-0805	1		5/16" Wrench	
	14-0876	1		6mm Wrench	

(#) Quantity

(X) Recommended Spare Parts (quantity shown based on 1-5 tools in operation)

Table "A"

Ref.	Description	Overhose Length		
		1' (0.3M)	2' (0.6M)	4' (1.2M)
--	Termination Code	1	2	3
--	Overhose Assembly	45-6003	45-6002	45-6001
2	Overhose	45-0945S	45-0955S	45-0956S

Table "A1"

Ref.	Collet Number	Collet Size	Termination Code
23	01-0100	1/8"	8
	01-0102	3/32"	6
	01-0148	3.00mm	3
	01-0131	2.35mm	2

Sales & Service Centers

Note: All locations may not service all products. Please contact the nearest Sales & Service Center for the appropriate facility to handle your service requirements.

Detroit, MI
**Apex Tool Group
Sales & Service Center**
2630 Superior Court
Auburn Hills, MI 48326
Tel: 248-393-5640
Fax: 248-391-6295

Houston, TX
**Apex Tool Group
Sales & Service Center**
6550 West Sam Houston
Parkway North, Suite 200
Houston, TX 77041
Tel: 713-849-2364
Fax: 713-849-2047

Lexington, SC
Apex Tool Group
670 Industrial Drive
Lexington, SC 29072
Tel: 800-845-5629
Tel: 803-951-7544
Fax: 803-358-7681

Los Angeles, CA
**Apex Tool Group
Sales & Service Center**
6881 Stanton Avenue
Unit B
Buena Park, CA 90621
Tel: 562-623-4457
Fax: 562-802-1718

Seattle, WA
**Apex Tool Group
Sales & Service Center**
2865 152nd Avenue N.E.
Redmond, WA 98052
Tel: 425-497-0476
Fax: 425-497-0496

York, PA
**Apex Tool Group
Sales & Service Center**
3990 East Market Street
York, PA 17402
Tel: 717-755-2933
Fax: 717-757-5063

Canada
**Apex Tool Group
Sales & Service Center**
5925 McLaughlin Road
Mississauga, Ont. L5R 1B8
Canada
Tel: 905-501-4785
Fax: 905-501-4786

Germany
**Apex Tool Group
GmbH & Co. OHG**
Industriestraße 1
73463 Westhausen
Germany
Tel: +49 (0) 73 63 81 0
Fax: +49 (0) 73 63 81 222

England
**Apex Tool Group
GmbH & Co. OHG**
C/O Spline Gauges
Piccadilly, Tamworth
Staffordshire B78 2ER
United Kingdom
Tel: +44 1827 8741 28
Fax: +44 1827 8741 28

France
Apex Tool Group S.N.C.
25 rue Maurice Chevalier
B.P. 28
77831 Ozoir-La-Ferrière
Cedex, France
Tel: +33 1 64 43 22 00
Fax: +33 1 64 43 17 17

China
Cooper (China) Co., Ltd.
a company of
Apex Tool Group, LLC
955 Sheng Li Road,
Heqing Pudong, Shanghai
China 201201
Tel: +86-21-28994176
Fax: +86-21-51118446

Mexico
**Cooper Tools
de México S.A. de C.V.**
a company of
Apex Tool Group, LLC
Vialidad El Pueblito #103
Parque Industrial Querétaro
Querétaro, QRO 76220
Mexico
Tel: +52 (442) 211-3800
Fax: +52 (442) 103-0443

Brazil
Cooper Tools Industrial Ltda.
a company of
Apex Tool Group, LLC
Av. Liberdade, 4055
Zona Industrial - Iporanga
18087-170 Sorocaba
SP Brazil
Tel: +55 15 2383929
Fax: +55 15 2383260

Hungary
**Apex Tool Group
Hungaria Kft**
Platánfa u.2
9027 Győr
Hungary
Tel: +36 96 66 1383
Fax: +36 96 66 1135

Apex Tool Group, LLC
1000 Lufkin Road
Apex, NC 27539
Phone: 919-387-0099
Fax: 919-387-2614
www.apextoolgroup.com

DOTCO®