

# Dynabelter® Accu-Grinder

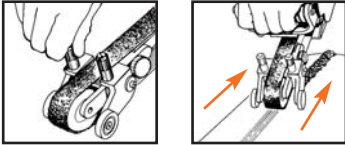
## Air-Powered Abrasive Belt Tool with Adjust-A-Wheel

**ABRASIVE CAPACITY**  
**ABRASIVE BELTS**  
 1" wide x 30" long  
 (25 mm x 762 mm)

Grinds Welds Flat, Without Undercutting

### Model 11486 Heavy-Duty, 1.2 hp

- Efficiently removes excess weld material and leaves a narrow "in-line" scratch pattern. This model takes the guesswork out of weld grinding, and prevents undercutting!



- Adjustable guide tires control the depth of abrasive belt cut. Simple twist-knobs adjust depth of cut. Allows controlled grinding on flats, contours and inside/outside of pipes and tanks.
- Includes 11717 Adjust-A-Wheel Contact Arm with 90-durometer standard serrated Contact Wheel, 2" diameter x 1" wide (see page 24).

### Work on Longitudinal Welds:

- I.D. – 12" diameter pipe or larger.
- O.D. – 8" diameter pipe or larger.



Model 11486

Place 11486 Dynabelter handle at 45° angle from belt housing to increase grinding pressure. Pull tool toward operator for faster material removal.

Model Number	Motor hp (W)	Motor RPM	Sound Level	Abrasive Belt Size Inch (mm)	Maximum Air Flow SCFM (LPM)	Max. SFPM (SMPM)	Air Inlet Thread	Weight Pound (kg)	Length Inch (mm)	Height Inch (mm)
11486	1.2 (895)	13,000	89 dB(A)	1 (25) W x 30 (762) L	58 (1,643)	4,220 (1,282)	3/8" NPT	9.0 (4.1)	22 (559)	7 (178)

Additional Specifications: Hose I.D. Size 1/2" (13 mm) • Air Pressure 90 PSIG (6.2 Bar)

Tune-Up Kit: No. 96011 (page 192) • Recommended Air Line Accessory: 98265 Coupler/Plug Assembly (page 161)

# Dynabelter® Accessories

### 11739 Dynabelter® Adapter

- Dynaflex® Contact Arms (see pg. 9), can be mounted on 11475 and 11476 Dynabelter® models with optional 11739 Adapter.
- Allows for work in small areas using 30" belts (8" reach).



Model 11739

### Dynabelter® Contact Arm Extender

- Allows for longer abrasive belts! The Dynabelter® uses standard 30" long abrasive belts, however, these extenders allow Contact Arms to use longer abrasive belts.
- Extenders can only be used with Dynabelter® Contact Arms.

### 11656 Extender

- For 42" belts (13" reach)

### 11657 Extender

- For 54" belts (19" reach)

### 11679 Extender

- For 60" belts (21" reach)



Model 11656

Model 11679

