

.4 Hp/7°/Rear Exhaust 2" Disc Sander

Air Motor and Machine Parts

Model:
52502 — 30,000 RPM

| KEY | |
|----------|---|
| O | Oil: O ₁ = Air Lube |
| A | Adhesive: A ₈ = Loctite #567 |
| T | Torque: N·m x 8.85 = In. - lbs. |

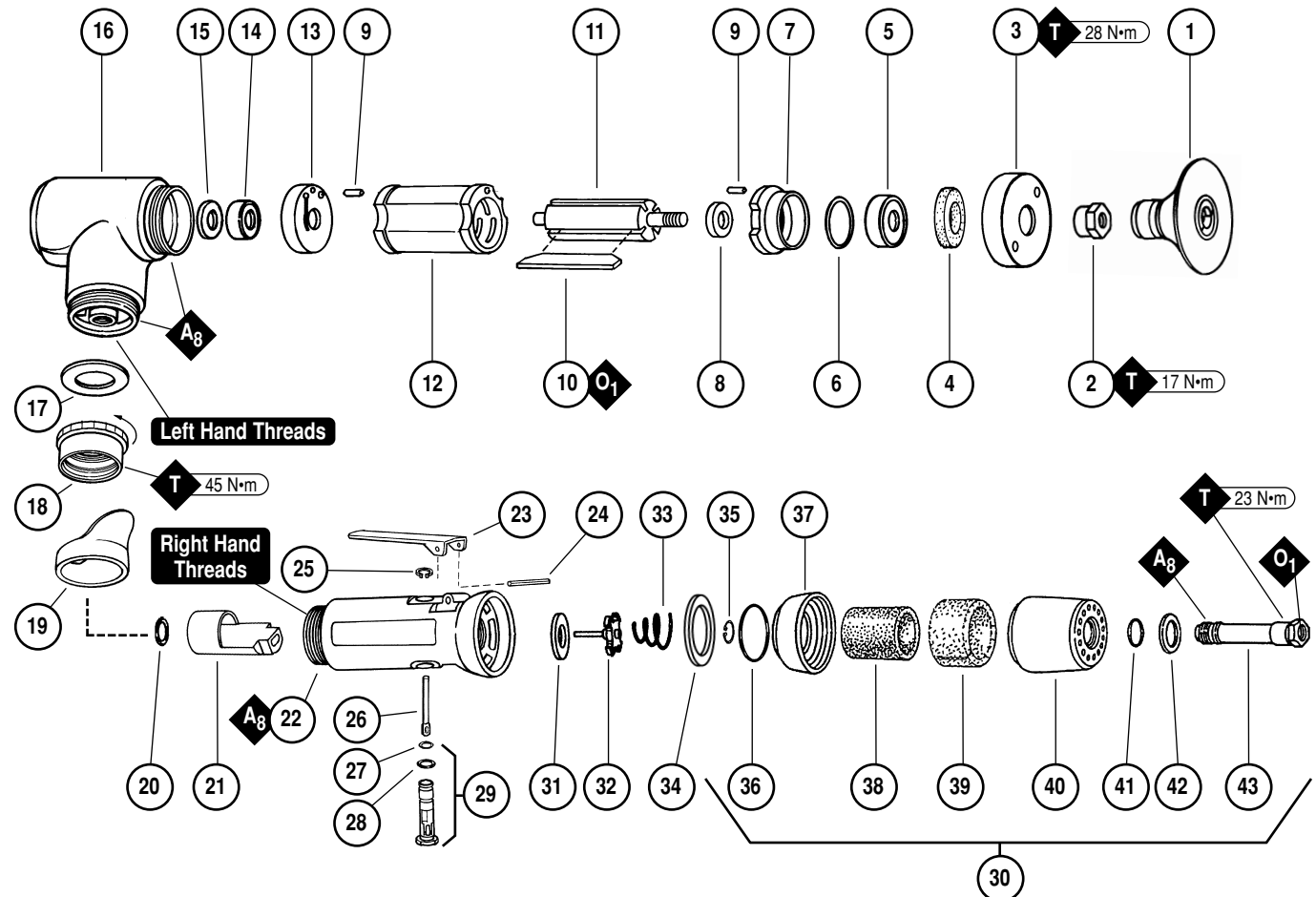
! WARNING

Always operate, inspect and maintain this tool in accordance with the Safety Code for portable air tools (ANSI B186.1) and any other applicable safety codes and regulations. Please refer to Dynabrade's Warning/Safety Operating Instructions for more complete safety information. See inside for Important Operating, Maintenance and Safety Instructions.

Index Key

No. Part # Description

| | | | | | |
|----|-------|---------------------|----|-------|-----------------------|
| 1 | 50110 | 2" 3M Roloc® Disc | 23 | 01448 | Throttle Lever |
| 2 | 50133 | Adapter | | 01462 | Safety Throttle Lever |
| 3 | 01560 | Exhaust Cover | 24 | 12132 | Pin |
| 4 | 01580 | Silencer | 25 | 95558 | Retaining Ring |
| 5 | 02649 | Bearing | 26 | 01449 | Valve Stem |
| 6 | 54529 | Shim Pack (3/pkg.) | 27 | 95730 | O-Ring |
| 7 | 01478 | Front Bearing Plate | 28 | 01024 | O-Ring |
| 8 | 01479 | Spacer | 29 | 01469 | Speed Regulator |
| 9 | 50767 | Pin (2) | 30 | 94520 | Muffler Assembly |
| 10 | 01480 | Blades (4/pkg.) | 31 | 01464 | Seal |
| 11 | 01594 | Rotor | 32 | 01472 | Tip Valve |
| 12 | 01476 | Cylinder | 33 | 01468 | Spring |
| 13 | 02673 | Rear Bearing Plate | 34 | 01564 | Spacer |
| 14 | 02696 | Bearing | 35 | 95711 | Retaining Ring |
| 15 | 02679 | Shield | 36 | 95438 | O-Ring |
| 16 | 01546 | Housing | 37 | 94521 | Muffler Base |
| 17 | 01548 | Gasket | 38 | 94524 | Sintered Muffler |
| 18 | 01461 | Lock Nut | 39 | 94525 | Felt Muffler |
| 19 | 01558 | Collar | 40 | 94522 | Muffler Cap |
| 20 | 95523 | O-Ring | 41 | 95375 | O-Ring |
| 21 | 01470 | Insert | 42 | 94526 | Spacer |
| 22 | 01488 | Housing | 43 | 94523 | Inlet Adapter |



Note: To reorder replacement parts, specify the **Model#**, **Serial#**, and **RPM** of your machine.