

ECLIPSE

PROFESSIONAL ENGINEERING TOOLS

Product Guide



METAL CUTTING
CHISELS

LOCKING JAW PLIERS
PLIERS & SCREWDRIVERS

VICES & CLAMPS

GRIPPING & PLUMBING

RIVETERS

TORQUE CONTROL TOOLS

GRIPPING & PLUMBERS

ENGINEERS' TOOLS

MAGNETS

DRILL BITS

GENERAL HAND TOOLS

CONTENTS

Metal Cutting

Hand & Power Hacksaw Blades	4-6
Saw Frames & Small Saw Blades	7-9
Holesaws & Arbors	10-11
Cutting & Grinding Abrasive Discs	12-13
Bolt & Cable Cutters	14-15
Snips	16

Chisels

Cold Chisels	18
Wood Chisels	19

Locking Jaw Pliers

Locking Jaw Pliers	21-22
C-Clamps	22-23

Pliers & VDE Screwdrivers

Pliers	25-27
VDE Screwdrivers	27

Vices & Clamps

Mechanics' Vices, Spares & Accessories	29-30
Woodworking Vices	30
G-Clamps	31
One-Handed Bar Clamps & Spreaders	32
Screw Clamps	32
Sash Clamps & Heads	32
T-Bar Clamps	32

Gripping & Plumbing Tools

Leader Pattern Pipe Wrenches	34
Stillson Pattern Pipe Wrenches	34
Adjustable Wrenches	34-35
Swedish Pattern Pipe Wrenches	35
Chain Pipe Wrenches	35
Hinged Pipe Wrenches	35
Pipe Cutters	36
Hand Bender	36

Riveters

Riveters	38
Threaded Insert Setting Tools & Kits	39
Rivets, Spares & Deburring Tools	40

Torque Control Tools & Accessories

Torque Wrenches	42-47
Socket Sets	47

Engineers' Tools

Punches	49
Scrapers, Pin Vices, Chuck & Collets	50
Nutspinners	50
Scribers & Jewellers' Screwdrivers	51
Tool Bits, Holders & Boring Bars	52
Cutting Off Tools, Lathe Tools & Holders	53
Tap Wrenches & Accessories	54

Eclipse Magnetics

Permanent Magnets	56-57
Magnetic Tools	58-60

Drill Bits

SDS Plus Drill Bits	62-63
Masonry Drill Bits	64
HSS Drill Bits	64

General Hand Tools

Utility Knives & Blades	66
Tape Measures	66



HAND & POWER HACKSAW BLADES SAW FRAMES & BLADES HOLESAWS & ARBORS CUTTING & GRINDING ABRASIVES DISCS BOLT & CABLE CUTTERS SNIPS

Eclipse saw blade robot



ECLIPSE - THE NUMBER ONE NAME IN METAL CUTTING

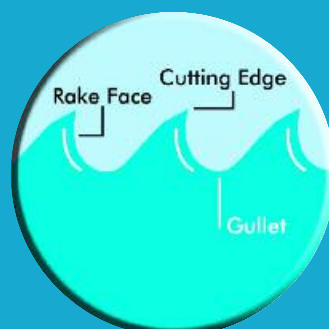
With a proud history of hacksaw blade manufacture stretching back nearly 100 years, Eclipse hacksaw blades have become synonymous with engineering excellence and continuous product development. As a result, Eclipse is now firmly established as the number one global metal cutting brand.

ECLIPSE PLUS 30 - A REVOLUTIONARY BLADE DESIGN

Following many years of research into the most effective cutting profile possible, Neill Tools has developed an entirely new blade tooth shape that enables a 30 percent faster cut over conventional blades. The result of this is the Eclipse Plus 30 range.

Why are Eclipse Plus 30 blades faster?

- They are precision-ground to the finest tolerances, making them much sharper than conventional milled blades.



- Their tooth geometry has been designed to give a positive rake angle that is more aggressive and therefore faster than conventional milled blades. Our tests show a 30% faster cut, hence the name 'Plus 30'.

ECLIPSE PLUS 30 - CONFIRMED BY INDEPENDENT TESTING

Independent testing by the University of Northumbria in Newcastle has verified the claims made about the Eclipse Plus 30 blade. Using both machine and hand testing, the Eclipse Plus 30 has been thoroughly tested and the improvement in cutting ability has been confirmed.

These two inset shots illustrate the difference between a ground and a milled blade under magnification.

MILLED TOOTH SHAPE



GROUND TOOTH SHAPE



HAND HACKSAW BLADES

Plus 30 BiMetal HSS

Part No	Blade Size mm	Blade Size inches	Teeth per 25mm	PIN dia. mm	Pack Size	Pack Weight (kg)
AA3025G	250 x 12.5 x 0.63	10 x ½ x 0.025	18	4	100	1.63
AA3026E	250 x 12.5 x 0.63	10 x ½ x 0.025	24	4	100	1.63
AA3027V	250 x 12.5 x 0.63	10 x ½ x 0.025	32	4	100	1.63
AA3045E	300 x 12.5 x 0.63	12 x ½ x 0.025	18	4	100	1.90
AA3046V	300 x 12.5 x 0.63	12 x ½ x 0.025	24	4	100	1.90
AA3047R	300 x 12.5 x 0.63	12 x ½ x 0.025	32	4	100	1.90



A virtually unbreakable bimetal blade for superb cutting performance, wear resistance and safety.

The combination of an M2 High Speed ground cutting and edge, electron-beam welded to a flexible alloy back gives a level of cutting power and flexibility that is far superior to edge hardened or conventional flexible blades.

The unique ground tooth profile of the Plus 30 blade produces a faster and more aggressive cutting action that requires less effort and is more efficient than a standard blade.

Cuts through all types of materials including alloy and stainless steels.

- **30% MORE CUTTING POWER**
- **HIGH PERFORMANCE**

Plus 30 All Hard HSS

Part No	Blade Size mm	Blade Size inches	Teeth per 25mm	PIN dia. mm	Pack Size	Pack Weight (kg)
AE3025W	250 x 12.5 x 0.63	10 x ½ x 0.025	18	4	100	1.63
AE3026B	250 x 12.5 x 0.63	10 x ½ x 0.025	24	4	100	1.63
AE3044W	300 x 12.5 x 0.63	12 x ½ x 0.025	14	4	100	1.90
AE3045B	300 x 12.5 x 0.63	12 x ½ x 0.025	18	4	100	1.90
AE3046X	300 x 12.5 x 0.63	12 x ½ x 0.025	24	4	100	1.90
AE3047K	300 x 12.5 x 0.63	12 x ½ x 0.025	32	4	100	1.90



A rigid, All Hard ground blade for highly accurate cutting and long life.

The All Hard blade is manufactured entirely from top quality M2 High Speed Steel and each blade is precisely hardened throughout its entire width to give a strong, rigid back, thus ensuring a perfectly straight cut time after time.

For the best performance from All Hard blades, the workpiece should be securely held in a clamp or vice to prevent shattering of the blade and safety goggles should be worn.

The unique ground tooth profile of the Plus 30 blade produces a faster and more aggressive cutting action that requires less effort and is more efficient than a standard blade.

- **30% MORE CUTTING POWER**
- **SHARPER FIRST CUT**
- **LONGER LIFE**

BiMetal High Speed Steel

Part No	Blade Size mm	Blade Size inches	Teeth per 25mm	PIN dia. mm	Pack Size	Pack Weight (kg)
AA45E	300 x 12.5 x 0.63	12 x ½ x 0.025	18	4	100	1.90
AA46V	300 x 12.5 x 0.63	12 x ½ x 0.025	24	4	100	1.90
AA47R	300 x 12.5 x 0.63	12 x ½ x 0.025	32	4	100	1.90



Cuts through all types of materials including alloys and stainless steels.

A virtually unbreakable bimetal blade for superb cutting performance, wear resistance and safety.

The combination of an M2 High Speed cutting edge and electron-beam welded to a flexible alloy back gives a level of cutting power and flexibility that is far superior to edge hardened or conventional flexible blades.

Cuts through all types of materials including alloy and stainless steels.

- **HIGH PERFORMANCE**
- **SHATTERPROOF BLADE**

All Hard High Speed Steel

Part No	Blade Size mm	Blade Size inches	Teeth per 25mm	PIN dia. mm	Pack Size	Pack Weight (kg)
AE44W	300x12.5x0.63	12 x ½ x 0.025	14	4	100	1.90
AE45B	300x12.5x0.63	12 x ½ x 0.025	18	4	100	1.90
AE46X	300x12.5x0.63	12 x ½ x 0.025	24	4	100	1.90
AE47K	300x12.5x0.63	12 x ½ x 0.025	32	4	100	1.90



A rigid, All Hard blade for highly accurate cutting and long life.

Manufactured entirely from top quality High Speed Steel, each blade is precisely hardened throughout its entire width to give a strong, rigid back, ensuring a perfectly straight cut time after time.

For the best performance from All Hard blades the workpiece should be securely held in a clamp or vice to prevent shattering of the blade and safety goggles should be worn.

Cuts through all types of materials including alloy and stainless steels.

- **ACCURATE CUTTING**
- **LONG LIFE**

Flexible High Speed Steel

Part No	Blade Size mm	Blade Size inches	Teeth per 25mm	PIN dia. mm	Pack Size	Pack Weight (kg)
AS45A	300x12.5x0.63	12x ½ x 0.025	18	4	100	1.80
AS46D	300x12.5x0.63	12x ½ x 0.025	24	4	100	1.80
AS47P	300x12.5x0.63	12x ½ x 0.025	32	4	100	1.80



A virtually unbreakable, edge hardened blade, which offers flexibility and safety but less wear resistance than an All Hard or bimetal blade.

- **EDGE HARDENED**
- **SHATTERPROOF BLADE**
- **LONGER LIFE**

Flexible Silicon Steel

Part No	Blade Size mm	Blade Size inches	Teeth per 25mm	PIN dia. mm	Pack Size	Pack Weight (kg)
AM25L	250x12.5x0.63	10 x ½ x 0.025	18	4	100	1.60
AM26W	250x12.5x0.63	10 x ½ x 0.025	24	4	100	1.60
AM44L	300x12.5x0.63	12 x ½ x 0.025	14	4	100	1.80
AM45W	300x12.5x0.63	12 x ½ x 0.025	18	4	100	1.80
AM46B	300x12.5x0.63	12 x ½ x 0.025	24	4	100	1.80
AM47X	300x12.5x0.63	12 x ½ x 0.025	32	4	100	1.80



A virtually unbreakable blade suitable for DIY use.

Manufactured from low alloy silicon steel, this blade is ideal for general purpose sawing of mild steel, brass, aluminium, copper and other soft metals and plastics.

- **GENERAL PURPOSE**
- **SHATTERPROOF BLADE**

HAND HACKSAW BLADES

HAND BLADE TOOTH PITCH SELECTION

To select the hacksaw blade with the correct number of teeth for the task, consider the following elements:

- **How thick is the material to be cut?**
For thin sections, the highest number of teeth should be used and vice versa for thicker sections.
- **What type of material is to be cut?**
The table opposite is a guide to tooth pitch selection for different materials and various thicknesses.



WORKPIECE MATERIAL	WORKPIECE THICKNESS				
	mm inch	3 1/8	6 1/4	10 3/8	13 1/2
Magnesium		32			
Aluminium			24		
Free Machining			18		
Low Carbon Steels				14	
Brass, Copper, Carbon Steels, Low and Medium Carbon		32			
Structural Steels			24		
				18	
					14
High Carbon Steels, Bronze, Tool Steels, Die Steel, Alloy Steels, Stainless Steels, Copper Alloys		32			
				24	
Malleable Cast Iron, Titanium Alloys, High Temperature Alloys (Inconel, Nimonic, Hastelloy, Incolony), Nickel Alloys (Monel, Duranickel)					18

POWER HACKSAW BLADES

The comprehensive range of **ECLIPSE** Power Hacksaw Blades will suit virtually all popular sawing machines including the Kasto range. The continuous development of our range has improved the long-term sharpness of the blades. To reflect this advance the blades are now known as 'Super Hardened'. There is a choice of All Hard HSS or Bimetal HSS blades with a wide range of sizes and tooth pitch to cater for all varieties of materials and thicknesses.

ALL HARD HSS

- Manufactured entirely from top quality M3 High Speed Steel and hardened throughout, these blades are capable of cutting even the most difficult materials with great accuracy and combine consistent high performance with long life. This range also includes light power blades of 16mm (5/8") width.

BI METAL HSS

- Manufactured from M3 High Speed Steel, electron beam welded to a spring steel back, these bimetal blades are able to withstand heavy feed pressures, giving economical, high cutting rates. Because these blades are virtually unbreakable in normal use, they are particularly safe and therefore suitable for use by unskilled operators or on older machines. They will cut through most types of material including alloy and stainless steels.

TOOTH FORM

- All **Eclipse** power blades feature a regular tooth form with a full, round and smooth gullet which is ideal for use on all ferrous metals and for general purpose cutting.

TOOTH SET

- All **Eclipse** power blades are either raker set or wavy set dependent on tooth size and blade thickness. Wavy set helps eliminate tooth stripping when sawing thin sections such as tubing and pipe, whilst raker set is ideal for the majority of other sawing tasks.

APPROVALS AND SPECIFICATION

- All **Eclipse** power blades are manufactured to BSEN ISO 9001: 2008 quality assurance standard.

POWER BLADE TOOTH PITCH SELECTION

- The table on the right is a guide to tooth pitch selection for different materials and various thicknesses. Also included are suggested running speeds and strokes per minute. For thinner workpieces select the faster blade speed and for thicker pieces select the slower speed.

WORKPIECE MATERIAL	SPEED STROKES/Min	WORKPIECE THICKNESS						
		mm inch	13 ½	25 1	50 2	75 3	100 4	125 5
Magnesium	140-160	14						
Aluminium	100-160		10					
Free Machining Low Carbon Steels	140-160			6				
							4	
Brass	120-150	14						
Copper	90-120		10					
Mild Steel	110-150			6				
Carbon Steels Low & Medium Carbon 90-160							4	
Structural Steels 100-125								
High Carbon Steels	50-100		14					
Bronze	100-120			10				
Tool Steels	60-80				6			
Die Steels	50-75						4	
Alloy Steels	45-95							
Copper Alloys	70-120							
Malleable Cast Irons	50-90							
Titanium Alloys	50-70							
Grey Cast Irons	70-100							
High Temperature 35-75 Alloys (Inconel, Nimonic, Hastelloy, Incoloy, Waspaloy)			10					
				6				
Nickel Alloys (Monel, Duranickel)	30-60							4

POWER HACKSAW BLADES



ALL HARD HSS

Manufactured entirely from top quality M3 High Speed Steel and hardened throughout, these blades are capable of cutting even the most difficult materials with great accuracy and combine consistent high performance with long life. This range also includes light power blades of 16mm (5/8") width.

Part No	Blade Size mm	Blade Size inches	Teeth per 25mm	PIN dia. mm	Pack Size	Pack Weight (kg)
AE144N	300 x 16 x 0.80	12 x 5/8 x 0.032	14	5	50	1.60
AE145L	300 x 16 x 0.80	12 x 5/8 x 0.032	18	5	50	1.60
AE146W	300 x 16 x 0.80	12 x 5/8 x 0.032	24	5	50	1.60
AE203V	300 x 25 x 1.25	12 x 1 x 0.050	10	8.2	10	0.79
AE204R	300 x 25 x 1.25	12 x 1 x 0.050	14	8.2	10	0.79
AE222B	350 x 25 x 1.25	14 x 1 x 0.050	6	8.2	10	0.94
AE223R	350 x 25 x 1.25	14 x 1 x 0.050	10	8.2	10	0.94
AE224H	350 x 25 x 1.25	14 x 1 x 0.050	14	8.2	10	0.94
AE342E	350 x 32 x 1.60	14 x 1 1/4 x 0.062	6	8.2	10	1.50
AE343V	350 x 32 x 1.60	14 x 1 1/4 x 0.062	10	8.2	10	1.50
AE344R	350 x 32 x 1.60	14 x 1 1/4 x 0.062	14	8.2	10	1.50
AE452W	350 x 38 x 2.00	14 x 1 1/2 x 0.075	6	8.2	10	1.06
AE243H	400 x 25 x 1.25	16 x 1 x 0.050	10	8.2	10	1.06
AE244M	400 x 25 x 1.25	16 x 1 x 0.050	14	8.2	10	1.06
AE352X	400 x 32 x 1.60	16 x 1 1/4 x 0.062	6	8.2	10	1.72
AE353K	400 x 32 x 1.60	16 x 1 1/4 x 0.062	10	8.2	10	1.72
AE354C	400 x 32 x 1.60	16 x 1 1/4 x 0.062	14	8.2	10	1.72
AE462G	400 x 38 x 2.00	16 x 1 1/2 x 0.075	6	8.2	10	2.50
AE263M	425 x 25 x 1.25	17 x 1 x 0.050	10	8.2	10	1.12
AE362V	425 x 32 x 1.60	17 x 1 1/4 x 0.062	6	8.2	10	1.80
AE363R	425 x 32 x 1.60	17 x 1 1/4 x 0.062	10	8.2	10	1.80
AE372K	450 x 32 x 1.60	18 x 1 1/4 x 0.062	6	10.2	10	1.88
AE373C	450 x 32 x 1.60	18 x 1 1/4 x 0.062	10	10.2	10	1.88
AE471W	450 x 38 x 2.00	18 x 1 1/2 x 0.075	4	10.2	10	2.68
AE472B	450 x 38 x 2.00	18 x 1 1/2 x 0.075	6	10.2	10	2.68
AE512M	450 x 45 x 2.25	18 x 1 3/4 x 0.088	6	10.2	10	3.90
AE522A	475 x 45 x 2.25	19 x 1 3/4 x 0.088	6	10.2	10	3.95
AE482E	500 x 38 x 2.00	20 x 1 1/2 x 0.075	6	10.2	10	3.00
AE492X	525 x 38 x 2.00	21 x 1 1/2 x 0.075	6	10.2	10	3.30
AE493K	525 x 38 x 2.00	21 x 1 1/2 x 0.075	10	10.2	10	3.30
AE541A	525 x 45 x 2.25	21 x 1 3/4 x 0.088	4	10.2	10	4.30
AE542D	525 x 45 x 2.25	21 x 1 3/4 x 0.088	6	10.2	10	4.30
AE622C	550 x 50 x 2.50	22 x 2 x 0.100	6	12.5	10	5.60
AE631R	575 x 50 x 2.50	23 x 2 x 0.100	4	12.5	10	5.93
AE632H	575 x 50 x 2.50	23 x 2 x 0.100	6	12.5	10	5.93
AE562P	600 x 45 x 2.25	24 x 1 1/2 x 0.088	6	12.5	10	4.90
AE641C	600 x 50 x 2.50	24 x 2 x 0.100	4	12.5	10	6.40
AE642J	600 x 50 x 2.50	24 x 2 x 0.100	6	12.5	10	6.40
AE651H	650 x 50 x 2.50	26 x 2 x 0.100	4	12.5	10	6.96
AE652M	650 x 50 x 2.50	26 x 2 x 0.100	6	12.5	10	6.96
AE662A	700 x 50 x 2.50	28 x 2 x 0.100	6	12.5	10	7.35
AE691F	750 x 63 x 2.50	30 x 2 1/2 x 0.100	4	12.5	10	10.08

SUITABLE FOR USE WITH KASTO HACKSAWING MACHINES

AE972G	450 x 38 x 2.00	18 x 1 1/2 x 0.075	10	8.5	10	2.80
AE982B	575 x 50 x 2.50	23 x 2 x 0.100	4	10.5	10	5.96
AE983X	575 x 50 x 2.50	23 x 2 x 0.100	6	10.5	10	5.96

BiMetal High Speed Steel

Manufactured from High Speed Steel, electron beam welded to a spring steel back, these bimetal blades are able to withstand heavy feed pressures, giving economical, high cutting rates. Because these blades are virtually unbreakable in normal use, they are particularly safe and therefore suitable for use by unskilled operators or on older machines. They will cut through most types of material including alloy and stainless steels.

Part No	Blade Size mm	Blade Size inches	Teeth per 25mm	PIN dia. mm	Pack Size	Pack Weight (kg)
AA203K	300 x 25 x 1.25	12 x 1 x 0.050	10	8.2	10	1.03
AA204C	300 x 25 x 1.25	12 x 1 x 0.050	14	8.2	10	1.03
AA223C	350 x 25 x 1.25	14 x 1 x 0.050	10	8.2	10	1.16
AA224J	350 x 25 x 1.25	14 x 1 x 0.050	14	8.2	10	1.16
AA342X	350 x 32 x 1.60	14 x 1 1/4 x 0.062	6	8.2	10	1.56
AA343K	350 x 32 x 1.60	14 x 1 1/4 x 0.062	10	8.2	10	1.56
AA352V	400 x 32 x 1.60	16 x 1 1/4 x 0.062	6	8.2	10	1.78
AA353R	400 x 32 x 1.60	16 x 1 1/4 x 0.062	10	8.2	10	1.78
AA462B	400 x 38 x 2.00	16 x 1 1/2 x 0.075	6	8.2	10	2.68
AA463X	400 x 38 x 2.00	16 x 1 1/2 x 0.075	10	8.2	10	2.68
AA372R	450 x 32 x 1.60	18 x 1 1/4 x 0.062	6	10.2	10	1.96
AA373H	450 x 32 x 1.60	18 x 1 1/4 x 0.062	10	10.2	10	1.96
AA472E	450 x 38 x 2.00	18 x 1 1/2 x 0.075	6	10.2	10	3.02
AA473V	450 x 38 x 2.00	18 x 1 1/2 x 0.075	10	10.2	10	3.02
AA482X	500 x 38 x 2.00	20 x 1 1/2 x 0.075	6	10.2	10	3.35
AA492V	525 x 38 x 2.00	21 x 1 1/2 x 0.075	6	10.2	10	3.52

SUITABLE FOR USE WITH KASTO HACKSAWING MACHINES

AA970L	450 x 38 x 2.00	18 x 1 1/2 x 0.075	6	8.5	10	3.02
--------	-----------------	--------------------	---	-----	----	------



STATEMENT OF CONFORMITY

Hacksaw and Power Blades - in general compliance with British Standard BS 1919 : Part 1: 1993 - Specification for hand and machine hacksaw blades.

SAW FRAMES

70-22TR

Can maintain blade tension at over 80kgs to ensure accurate and straight cutting performance

Strong, light frame for greater comfort and control when sawing

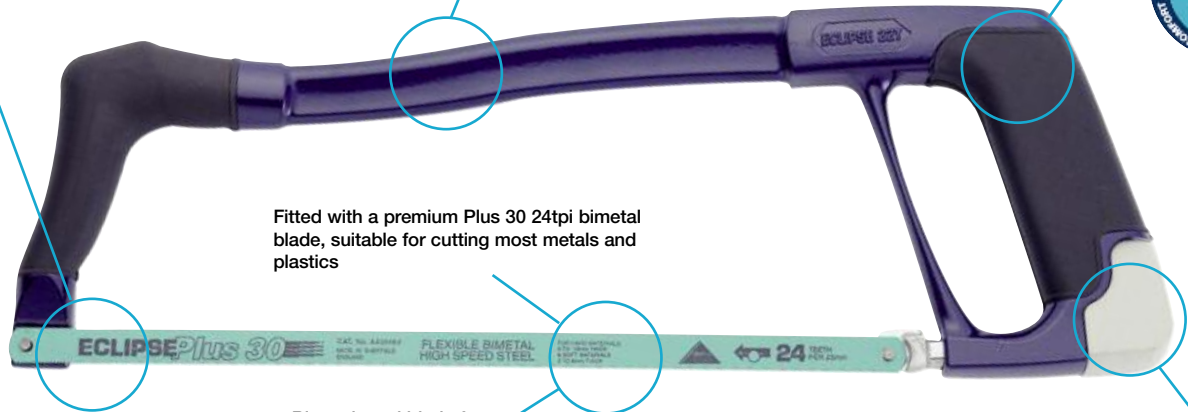
Soft-feel handle for comfort



Fitted with a premium Plus 30 24tpi bimetal blade, suitable for cutting most metals and plastics

Bimetal steel blade for a fast and accurate cut

Fast blade tensioning - 3 turns for 45kg tension 6 turns for 85kgs tension



SAW FRAMES

70-22TR

Code	Description	Length	Height	Packs per outer	Box Weight (Kg)
70-22TR	Hacksaw SF	400mm(16")	132mm(5.1")	5	3.6



The new 22T has soft-feel handle, Epoxy coated moulded section steel frame and comes complete with an **ECLIPSE** +30 bimetal blade

70-20TR/20TND

Code	Description	Length	Height	Packs per outer	Box Weight (Kg)
70-20TR	Prof. Hacksaw	465mm(18 1/2")	130mm(5")	5	3.85
20TND*	Prof. Hacksaw	465mm(18 1/2")	130mm(5")	20	14.75



The world famous, best selling hacksaw featuring a die cast handle, tubular frame complete with an **ECLIPSE** bimetal blade. The 20T has set the standard for all other makes - but the best is still the original 20T from **ECLIPSE**

* Hacksaws without Plus 30 blades are only available in selected non U.K. markets

70-20TSF

Code	Description	Length	Height	Packs per outer	Box Weight (Kg)
70-20TSF	Professional SF	460mm(18 1/4")	127mm(5")	5	2.5



The world famous, best selling hacksaw featuring a die cast handle, tubular frame complete with an **ECLIPSE** +30 bimetal blade, but with the added comfort of a soft-feel handle

18TND

Code	Description	Length	Height	Packs per outer	Box Weight (Kg)
18TND*	Hacksaw	443mm(17 3/8")	132mm(5 1/4")	10	4.4



Tremendous value for money without compromising on the strength and lightness synonymous with the **ECLIPSE** brand. Comes complete with an **ECLIPSE** bimetal blade

* Hacksaws without Plus 30 blades are only available in selected non U.K. markets

16TND

Code	Description	Length	Height	Packs per outer	Box Weight (Kg)
16TND*	Hacksaw	430mm (16 1/2")	132mm(5 1/4")	10	4.4



A lightweight, economical hacksaw with a strong, box section tubular steel frame and a comfortable and durable cast aluminium handle. In addition, the extra long location pin gives increased security of the tensioning bit. Comes complete with an **ECLIPSE** bimetal blade

* Hacksaws without Plus 30 blades are only available in selected non U.K. markets

40PG30/40PG

Code	Description	Length	Height	Packs per outer	Box Weight (Kg)
40PG30	Pistol Grip	485mm(19")	120mm(4 3/4")	5	3.50
40PG	Pistol Grip	485mm(19")	120mm(4 3/4")	5	3.50



A traditional pistol grip hacksaw with diecast handle, solid frame and an **ECLIPSE** bimetal blade

STATEMENT OF CONFORMITY

Hacksaw Frames - in general compliance with British Standard BS 7398 : 1991 - Specification for hand hacksaw frames.

SAW FRAMES

70-400R/400ND

Code	Description	Length	Height	Packs per outer	Box Weight (Kg)
70-400R	Handyman	400mm(15 ⁷ / ₈ "	130mm(5")	5	2.5
400ND*	Handyman	400mm(15 ⁷ / ₈ "	130mm(5")	20	9.20



A budget hacksaw with tubular steel frame and plastic handle supplied with an **ECLIPSE** flexible silicon steel blade

* Hacksaws without Plus 30 blades are only available in selected non U.K. markets

70-675R

Code	Description	Length	Height	Packs per outer	Box Weight (Kg)
70-675R	Mini Saw	250mm(10")	100mm(4")	5	1.00



A more substantial version of the Junior hacksaw with plastic moulded pistol grip handle, steel frame and **ECLIPSE** blade. Blade tensioning device incorporated in the handle

70-14JR

Code	Description	Length	Height	Packs per outer	Box Weight (Kg)
70-14JR	Junior	260mm(10 ¹ / ₄ "	67mm(2 ⁵ / ₈ "	5	0.70



The best selling Junior Hacksaw with an epoxy coated steel frame and **ECLIPSE** metal cutting blade

70-130R

Code	Description	Length	Height	Packs per outer	Box Weight (Kg)
70-130R	Pad Saw	276mm(10 ⁷ / ₈ "	-	5	1.40



Padsaw for sawing in confined places, e.g. when cutting out keyholes or letter boxes. Diecast handle supplied with 2 blades, one for wood cutting and one for metal. The handle can hold the blade in one of two positions for maximum flexibility in use

72-66XR

Code	Description	Length	Height	Packs per outer	Box Weight (Kg)
72-66XR	General Purpose	465mm(18 ¹ / ₄ "	-	5	2.70



General purpose saw for cutting through wood, plastics and soft metals (such as nails). Polyester coated blade and diecast 9 position handle to enable cutting in difficult positions

ECL98X - 22"

Code	Description	Length	PPI	Packs per outer	Box Weight (Kg)
ECL98X	Hardpoint Woodsaw	560mm (22")	8	10	4.24



A general purpose universal hardpoint wood saw for a fast cut along and across the grain. Provides a medium finish on timber, hardboard, chipboard and MDF. Duralife technology – lasts at least 20% longer than the best of the rest. Rigid back minimize 'whip' and vibration, whilst the Suregrip® soft feel handle provides a comfortable grip

70-CP1R

Code	Description	Length	Height	Packs per outer	Box Weight (Kg)
70-CP1R	Coping	315mm(12 ³ / ₈ "	130mm(5 ¹ / ₄ "	5	1.50



Coping saw for cutting and shaping in wood. Comfortable wooden handle and steel frame. Blades can be positioned at any angle to the frame

PS51

Code	Description	Length	Height	Packs per outer	Box Weight (Kg)
PS51	Piercing Saw	292mm(11 ¹ / ₂ "	95mm(3 ³ / ₈ "	5	0.90



Piercing saw for use in fine metal work such as jewellery and dentistry. Comfortable wooden handle and steel frame

70-FS1R

Code	Description	Length	Height	Packs per outer	Box Weight (Kg)
70-FS1R	Fret	270mm(10 ⁵ / ₈ "	300mm(11 ⁷ / ₈ "	5	2.05



Fretsaw for fine cutting work in thin materials such as wood, bone, plastics, etc - ideal for model makers. Comfortable wooden handle and steel frame

70-CP1RSF

Code	Description	Length	Height	Packs per outer	Box Weight (Kg)
70-CP1RSF	Coping Saw SF	317mm(12 ³ / ₈ "	130mm(5 ¹ / ₄ "	5	1.50



Coping saw for cutting and shaping in wood, with a soft-feel handle for extra comfort and steel frame. Blades can be positioned at any angle to the frame



STATEMENT OF CONFORMITY

Hacksaw Frames - in general compliance with British Standard BS 7398 : 1991 - Specification for hand hacksaw frames.

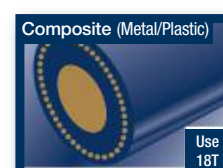
SMALL SAW BLADES

Part No	Description	Length	Teeth per 25mm	No. of blades in pack	Pack Size	Box Weight (kg)
71-418R	Bimetal blades	300mm (12")	18	2	10	-
71-424R	Bimetal blades	300mm (12")	24	2	10	-
71-432R	Bimetal blades	300mm (12")	32	2	10	-
1 71-624R	Triple pack of Hacksaw Blades		-	-	10	0.9
	- Bimetal blades	300mm (12")	18	1	-	-
	- Bimetal blades	300mm (12")	24	1	-	-
	- Bimetal blades	300mm (12")	32	1	-	-
71-224R	Silicon blades	300mm (12")	24	5	10	-
71-132R	Junior blades	150mm (6")	32	10	10	-
2 71-114R	Junior-wood	150mm (6")	14	10	10	-
71-230R	Padsaw blades					
	- wood	254mm (10")	10	1	10	-
	- metal	203mm (8")	24	1	10	-
71-CP7R	Coping Saw blades	165mm (6½")	14	10	10	-
71-CP24R	Coping Saw blades	165mm (6½")	24	10	10	-
71-FS5R	Fretsaw blades	125mm (5")	18	10	10	-
73-66SR	GP saw spare blade	375mm (15¼")	10	1	10	-
73-77SR	GP saw wood blade	405mm (16")	7	1	10	-
FS32	Fretsaw Blades	125mm (5")	32	100	1	0.30
FS22	Fretsaw Blades	125mm (5")	22	100	1	0.30
FS18	Fretsaw Blades	125mm (5")	18	100	1	0.30
FS16	Fretsaw Blades	125mm (5")	16	100	1	0.30
PS80	Piercing Saw Blades	125mm (5")	80	100	1	0.20
PS60	Piercing Saw Blades	125mm (5")	60	100	1	0.20
PS52	Piercing Saw Blades	125mm (5")	52	100	1	0.20
PS44	Piercing Saw Blades	125mm (5")	44	100	1	0.20
PS32	Piercing Saw Blades	125mm (5")	32	100	1	0.20

Plus30 Blades - Tubes of 10

Part No mm	Blade Size inches	Blade Size per 25mm	Teeth dia. mm	PIN Size	Pack Weight (kg)	Pack Size
+30BM18TUBE	300 x 12.5 x 0.63	12 x ½ x 0.025	18	4	100	1.63
3 +30BM24TUBE	300 x 12.5 x 0.63	12 x ½ x 0.025	24	4	100	1.63
+30BM32TUBE	300 x 12.5 x 0.63	12 x ½ x 0.025	32	4	100	1.63
+30AH18TUBE	300 x 12.5 x 0.63	12 x ½ x 0.025	18	4	100	1.90
+30AH24TUBE	300 x 12.5 x 0.63	12 x ½ x 0.025	24	4	100	1.90
+30AH32TUBE	300 x 12.5 x 0.63	12 x ½ x 0.025	32	4	100	1.90

Teeth per inch guide


1

2

3


HOLESAWS

ECLIPSE bi-metal holesaws are constructed from hardened, heat and abrasive resisting M3 high speed steel teeth electron-beam welded to a tough alloy body and cap. This gives them exceptional strength, durability, shatter resistance and safety. Due to the superior and robust construction, the **Eclipse** holesaws have the capability of cutting through virtually any machineable material, including cast iron, stainless steel, brass, bronze, aluminium, plastics and wood. Available in variable 4/6 pitch teeth for all purpose application or constant 6 pitch teeth ideal for thin sheet metal application. Full range of sizes from 14mm - 152mm in vari pitch and up to 76mm in constant pitch.



- **A SHARPER, MORE ACCURATE CUT**
- **CUTS FASTER**
- **STAYS SHARPER FOR LONGER**

Available in boxed singles or 16mm - 105mm on Retail Hanging Tabs.



Recommended Cutting Speeds

Product Code BOXED	Product Code RETAIL	Diameter	Mild Steel	Tool & Stainless Steel	Cast Iron	Brass	Aluminium	Wood
EBV30-14		14mm (5/8")	550	330	400	790	900	3000
EBV30-16	EBV30-16-RET	16mm (5/8")	530	275	365	730	825	3000
EBV30-17	EBV30-17-RET	17mm (11/16")	500	250	330	665	750	3000
EBV30-19	EBV30-19-RET	19mm (3/4")	460	230	300	600	690	3000
EBV30-20	EBV30-20-RET	20mm (7/8")	460	230	300	600	690	3000
EBV30-21	EBV30-21-RET	21mm (7/8")	425	210	280	560	630	3000
EBV30-22	EBV30-22-RET	22mm (7/8")	390	195	260	520	585	3000
EBV30-24	EBV30-24-RET	24mm (15/16")	370	185	245	495	555	3000
EBV30-25	EBV30-25-RET	25mm (1")	350	175	235	470	525	2700
EBV30-27	EBV30-27-RET	27mm (1 1/8")	325	160	215	435	480	2700
EBV30-29	EBV30-29-RET	29mm (1 1/8")	300	150	200	400	450	2700
EBV30-30	EBV30-30-RET	30mm (1 1/8")	285	145	190	380	425	2400
EBV30-32	EBV30-32-RET	32mm (1 1/4")	275	140	180	360	410	2400
EBV30-33	EBV30-33-RET	33mm (1 3/8")	260	135	175	345	390	2400
EBV30-35	EBV30-35-RET	35mm (1 3/8")	250	125	165	330	375	2400
EBV30-37	EBV30-37-RET	37mm (1 3/8")	240	120	160	315	360	2400
EBV30-38	EBV30-38-RET	38mm (1 1/2")	230	115	150	300	345	2400
EBV30-40	EBV30-40-RET	40mm (1 5/8")	220	110	145	290	330	2100
EBV30-41	EBV30-41-RET	41mm (1 5/8")	210	105	140	280	315	2100
EBV30-43	EBV30-43-RET	43mm (1 5/8")	205	100	135	270	305	2100
EBV30-44	EBV30-44-RET	44mm (1 7/8")	195	95	130	260	295	2100
EBV30-46	EBV30-46-RET	46mm (1 7/8")	190	95	125	250	285	2100
EBV30-48	EBV30-48-RET	48mm (1 7/8")	180	90	120	240	270	2100
EBV30-51	EBV30-51-RET	51mm (2")	170	85	115	230	255	2000
EBV30-52	EBV30-52-RET	52mm (2 1/8")	165	80	110	220	245	2000
EBV30-54	EBV30-54-RET	54mm (2 1/8")	160	80	105	210	240	2000
EBV30-55	EBV30-55-RET	55mm (2 1/8")	150	75	100	200	230	2000
EBV30-57	EBV30-57-RET	57mm (2 1/8")	150	75	100	200	230	2000
EBV30-59	EBV30-59-RET	59mm (2 3/8")	145	75	100	195	225	2000
EBV30-60	EBV30-60-RET	60mm (2 3/8")	140	70	95	190	220	2000
EBV30-64	EBV30-64-RET	64mm (2 5/8")	135	70	90	180	205	1800
EBV30-65	EBV30-65-RET	65mm (2 5/8")	130	65	85	175	200	1800
EBV30-67	EBV30-67-RET	67mm (2 5/8")	130	65	85	170	195	1800
EBV30-68	EBV30-68-RET	68mm (2 5/8")	130	65	85	165	190	1800
EBV30-70	EBV30-70-RET	70mm (2 7/8")	125	60	80	160	185	1800
EBV30-73	EBV30-73-RET	73mm (2 7/8")	120	60	80	160	180	1800
EBV30-76	EBV30-76-RET	76mm (3")	115	55	75	150	170	1500
EBV30-79	EBV30-79-RET	79mm (3 1/8")	110	55	70	145	165	1500
EBV30-83	EBV30-83-RET	83mm (3 1/8")	105	50	70	140	155	1500
EBV30-86	EBV30-86-RET	86mm (3 3/8")	100	50	65	130	150	1200
EBV30-89	EBV30-89-RET	89mm (3 3/8")	95	45	65	125	145	1200
EBV30-92	EBV30-92-RET	92mm (3 5/8")	95	45	60	120	140	1200
EBV30-95	EBV30-95-RET	95mm (3 7/8")	90	45	60	120	135	1200
EBV30-98	EBV30-98-RET	98mm (3 7/8")	90	45	60	115	130	1200
EBV30-102	EBV30-102-RE	102mm (4")	85	40	55	115	125	1000
EBV30-105	EBV30-105-RE	105mm (4 1/8")	85	40	55	110	120	1000
EBV30-108		108mm (4 1/8")	80	40	55	110	115	900
EBV30-111		111mm (4 3/8")	80	40	50	100	110	900
EBV30-114		114mm (4 5/8")	75	35	50	100	105	900
EBV30-121		121mm (4 7/8")	70	35	45	90	95	900
EBV30-127		127mm (5")	65	30	40	85	90	900
EBV30-140		140mm (5 1/2")	60	30	35	80	85	800
EBV30-152		152mm (6")	55	25	35	75	80	800

VARI-PITCH - All purpose Holesaws 4/6 pitch teeth

Part No	Diameter	Part No	Diameter	Part No	Diameter
EBV30-14	14mm (5/8")	EBV30-16	16mm (5/8")	EBV30-17	17mm (11/16")
EBV30-19	19mm (3/4")	EBV30-20	20mm (7/8")	EBV30-21	21mm (7/8")
EBV30-22	22mm (7/8")	EBV30-24	24mm (15/16")	EBV30-25	25mm (1")
EBV30-27	27mm (1 1/8")	EBV30-29	29mm (1 1/8")	EBV30-30	30mm (1 1/8")
EBV30-32	32mm (1 1/4")	EBV30-33	33mm (1 3/8")	EBV30-35	35mm (1 3/8")
EBV30-37	37mm (1 3/8")	EBV30-38	38mm (1 1/2")	EBV30-40	40mm (1 5/8")
EBV30-41	41mm (1 5/8")	EBV30-43	43mm (1 5/8")	EBV30-44	44mm (1 7/8")
EBV30-46	46mm (1 7/8")	EBV30-48	48mm (1 7/8")	EBV30-51	51mm (2")
EBV30-52	52mm (2 1/8")	EBV30-54	54mm (2 1/8")	EBV30-55	55mm (2 1/8")
EBV30-57	57mm (2 1/8")	EBV30-59	59mm (2 3/8")	EBV30-60	60mm (2 3/8")
EBV30-64	64mm (2 5/8")	EBV30-65	65mm (2 5/8")	EBV30-67	67mm (2 5/8")
EBV30-68	68mm (2 5/8")	EBV30-70	70mm (2 7/8")	EBV30-73	73mm (2 7/8")
EBV30-76	76mm (3")	EBV30-79	79mm (3 1/8")	EBV30-83	83mm (3 1/8")
EBV30-86	86mm (3 3/8")	EBV30-89	89mm (3 3/8")	EBV30-92	92mm (3 5/8")
EBV30-95	95mm (3 7/8")	EBV30-98	98mm (3 7/8")	EBV30-102	102mm (4")
EBV30-105	105mm (4 1/8")	EBV30-108	108mm (4 1/8")	EBV30-111	111mm (4 3/8")
EBV30-114	114mm (4 5/8")	EBV30-121	121mm (4 7/8")	EBV30-127	127mm (5")
EBV30-140	140mm (5 1/2")	EBV30-152	152mm (6")		

CONSTANT PITCH - Thin sheet metal Holesaws constant pitch teeth

Part No	Diameter	Part No	Diameter	Part No	Diameter
EBC-16	16mm (5/8")	EBC-27	27mm (1 1/8")	EBC-60	60mm (2 3/8")
EBC-19	19mm (3/4")	EBC-32	32mm (1 1/4")	EBC-64	64mm (2 5/8")
EBC-20	20mm (7/8")	EBC-35	35mm (1 3/8")	EBC-76	76mm (3")
EBC-22	22mm (7/8")	EBC-38	38mm (1 1/2")		
EBC-25	25mm (1")	EBC-51	51mm (2")		

All packed in single units.



Holesaw Kits on page 11

HOLESAW KITS

HOLESAW KITS

Part No	Diameter	ELECTRICIANS KIT EE30-K	GENERAL PURPOSE KIT EGP30-K	ELECTRICIANS & PLUMBERS KIT EEP30-K
HOLESAWS				
EBV30-16	16mm (5/8")	*	-	-
EBV30-20	20mm (3/4")	*	-	*
EBV30-22	22mm (7/8")	-	*	*
EBV30-25	25mm (1")	*	-	-
EBV30-29	29mm (1 1/8")	-	*	*
EBV30-32	32mm (1 1/4")	*	-	-
EBV30-35	35mm (1 3/8")	-	*	*
EBV30-38	38mm (1 1/2")	*	-	*
EBV30-44	44mm (1 7/8")	-	*	*
EBV30-51	51mm (2")	*	*	*
EBV30-57	57mm (2 1/4")	-	-	*
EBV30-64	64mm (2 1/2")	-	*	*
ARBORS				
E4	14-30mm	*	*	*
E2	32-152mm	*	*	*
E11	14-30mm	-	-	*
HEXKEY4	4mm Hex Key	-	-	*
EXTENSION BAR				
EE12	300mm (12")	-	-	*

* Kits packed in single units



ARBORS

ACCESSORIES

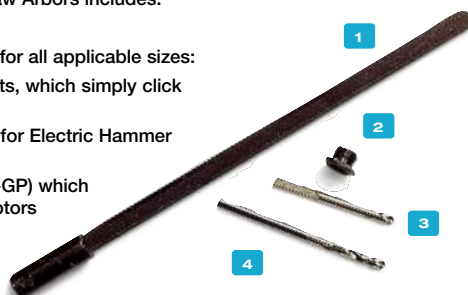
Part No	Description	Size	Pack Size
1 EE12	Arbor Extension	300mm (12")	1
2 EN1	Arbor Adaptor	-	10
3 ED1	Pilot Drill	70mm (2 3/4")	10
4 ED2	Pilot Drill	114mm (4 1/2")	10

Drive plates are available for use with other holesaws which may not feature 'solid cap' construction, to improve stability in use.

Also available: Arbor extension rod and adaptor to reduce screw thread size and spare pilot drills.

The range of Eclipse Holesaw Arbors includes:

- Standard arbors suitable for all applicable sizes:
- Quick release (QR) variants, which simply click the pins into place.
- SDS plus arbors suitable for Electric Hammer drills.
- A general purpose set (E-GP) which includes a variety of adaptors to fit all sizes.



ARBOR SELECTION GUIDE

Arbor	Holesaw Diameter	Screw Thread	Shank Type	Drill Chuck
5 E4	14mm-30mm (1/8"-1 3/8")	1/2"-20	6mm (1/4") Round	6mm (1/4")
6 E4SDS	14mm-30mm (1/8"-1 3/8")	1/2"-20	SDS plus	6mm (1/4")
7 E1	14mm-30mm (1/8"-1 3/8")	1/2"-20	10mm (3/8") HEX	10mm (3/8")
8 E11	14mm-30mm (1/8"-1 3/8")	1/2"-20	11mm (7/8") HEX	13mm (1/2")
9 E6	32mm-152mm (1 1/4"-6")	3/8"-18	11mm (7/8") HEX	13mm (1/2")
10 E2	32mm-152mm (1 1/4"-6")	3/8"-18	11mm (7/8") HEX	13mm (1/2")
11 E2QR	32mm-152mm (1 1/4"-6")	3/8"-18	11mm (7/8") HEX	13mm (1/2")
12 E2SDSQR	32mm-152mm (1 1/4"-6")	3/8"-18	SDS plus	6mm (1/4")
13 E3	32mm-152mm (1 1/4"-6")	3/8"-18	16mm (5/8") HEX	19mm (3/4")
14 E-GP	14mm-152mm (1/8"-6")	1/2"-20	11mm (7/8") HEX	13mm (1/2")



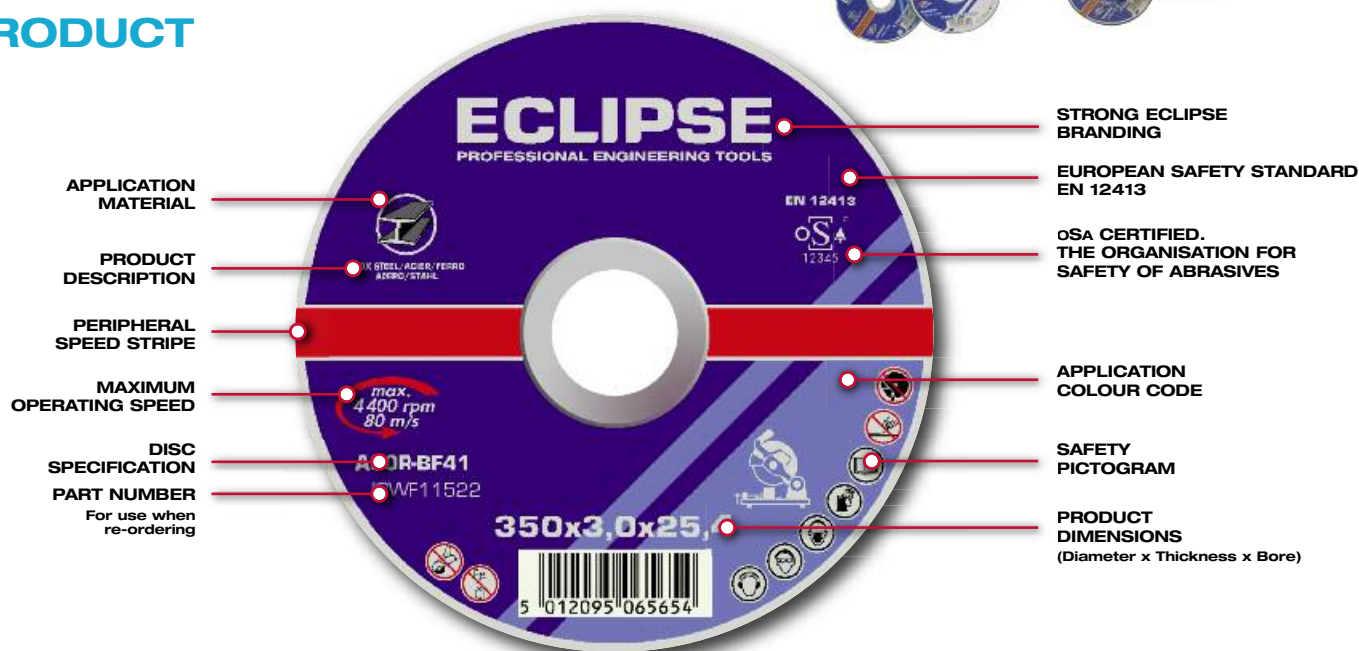
STATEMENT OF CONFORMITY

Holesaw Arbors - in general compliance with British Standard BS 8416 : 2002 - Specification for holesaws.

CUTTING & GRINDING WHEELS

The **ECLIPSE** range of cutting and grinding wheels for portable and fixed machines provide superior performance in the most strict working environment. The product range includes solutions for cutting-off, grinding, and surface finishing operations on materials related to all industrial markets.

UNDERSTANDING THE PRODUCT



SAFETY PICTOGRAM



WEAR GLOVES



WEAR EAR PROTECTION



WEAR EYE PROTECTION



WEAR A DUST MASK



READ THE INSTRUCTION



NOT PERMITTED FOR FACE GRINDING, CUTTING ONLY



DO NOT USE A DAMAGED WHEEL

USER SAFETY

■ Diamond tools and bonded abrasives must rotate at high speeds for efficient operation. The risk of product failure is increased with low quality products not designed and manufactured to conform to the respective standards and regulations in place. Such non conforming products may not withstand mechanical loads and heat generated during use.

Standards for diamond tools

■ EN13236:-

In January 2001 the European standard EN13236 was introduced to govern the safety requirements for super abrasive (diamond) products. Eclipse diamond discs conform to EN13236.

Standards for thin wheel bonded abrasives (cutting & grinding discs)

■ EN12413:-

This standard highlights that these types of cutting and grinding discs have a use by date. This "use by" date is permanently marked into the central rim of every Eclipse disc.

oSa:-

In the year 2000 the oSa (Organisation for Safety of Abrasives) was founded to raise standards to a higher level. All members of the oSa have to adhere to strict manufacturing, safety and quality standards that comply with the requirements of EN13236 and EN12413 and are regularly audited to ensure conformity. The oSa symbol on an abrasive or diamond disc product is a further guarantee to the user of product safety and quality.

All Eclipse discs carry the oSa symbol.

CUTTING & GRINDING WHEELS

Abrasive Discs for Steel

High performance range of cutting and grinding discs for steel and ferrous metals

Flat Cutting (for steel cutting)

Description	Part Ref	Dia. Inch	Dia. Metric	Thick-ness	Bore	Box Quantity
Flat	MCWF1152.522	4.5	115	2.5	22.2	25
Flat	MCWF12522	5	125	2.5	22.2	25
Flat	MCWF18022	7	180	2.5	22.2	25
Flat	MCWF23022	9	230	2.5	22.2	25
Flat	CSMP30020	12	300	3.5	20	25

Depressed Centre - Cutting (for steel cutting)

Description	Part Ref	Dia. Inch	Dia. Metric	Thick-ness	Bore	Box Quantity
Depressed Centre	MCWD11522	4.5	115	3.2	22.2	25
Depressed Centre	MCWD12522	5	125	3.2	22.2	25
Depressed Centre	MCWD18022	7	180	3.2	22.2	25
Depressed Centre	MCWD23022	9	230	3.2	22.2	25

Depressed Centre - Grinding (for steel grinding)

Description	Part Ref	Dia. Inch	Dia. Metric	Thick-ness	Bore	Box Quantity
Depressed Centre	MGWD11522	4.5	115	6	22.2	10
Depressed Centre	MGWD12522	5	125	6	22.2	10
Depressed Centre	MGWD18022	7	180	6	22.2	10
Depressed Centre	MGWD23022	9	230	6	22.2	10

Super Thin Wheels - Flat Cutting (for steel cutting)

Description	Part Ref	Dia. Inch	Dia. Metric	Thick-ness	Bore	Box Quantity
Flat	MCWF115122	4.5	115	1	22.2	25
Flat	MCWF2301.922	9	230	1.9	22.2	25

Cutting - Chopsaws (for steel cutting)

Description	Part Ref	Dia. Inch	Dia. Metric	Thick-ness	Bore	Box Quantity
Chopsaw	CSMC30025	12	300	2.6	25.4	25
Chopsaw	CSMC35025	14	350	3	25.4	25

Abrasive Discs for Stainless Steel

Abrasive discs for cutting and grinding stainless steel

High performance range of cutting and grinding discs suitable for contamination free cutting and grinding of stainless steels

Flat Cutting (for stainless steel cutting)

Description	Part Ref	Dia. Inch	Dia. Metric	Thick-ness	Bore	Box Quantity
Flat	ICWF11522	4.5	115	2.5	22.2	25
Flat	ICWF12522	5	125	2.5	22.2	25
Flat	ICWF18022	7	180	2.5	22.2	25
Flat	ICWF23022	9	230	2.5	22.2	25
Flat	CSIC35025	14	350	3	25.4	25

Super Thin Wheels - Flat Cutting (for stainless steel cutting)

Description	Part Ref	Dia. Inch	Dia. Metric	Thick-ness	Bore	Box Quantity
Flat	ICWF115122	4.5	115	1	22.2	25
Flat	ICWF2301.922	9	230	1.9	22.2	25

Depressed Centre - Grinding (for stainless steel cutting)

Description	Part Ref	Dia. Inch	Dia. Metric	Thick-ness	Bore	Box Quantity
Depressed Centre	IGWD11522	4.5	115	6	22.2	10
Depressed Centre	IGWD12522	5	125	6	22.2	10
Depressed Centre	IGWD18022	7	180	6	22.2	10
Depressed Centre	IGWD23022	9	230	6	22.2	10

Flap Discs

Conical fibreglass backed flap discs suitable for surface grinding, cleaning and de-burring of cast iron, steel and stainless steel

Aluminium Oxide - Steel Grinding

Description	Part Ref	Dia. Inch	Dia. Metric	Grit	Bore	Box Quantity
Flap	SGFC1152240	4.5	115	40	22.2	10
Flap	SGFC1152260	4.5	115	60	22.2	10
Flap	SGFC1152280	4.5	115	80	22.2	10
Flap	SGFC11522100	4.5	115	100	22.2	10
Flap	SGFC11522120	4.5	115	120	22.2	10

Zirconia - Stainless Steel Grinding

Description	Part Ref	Dia. Inch	Dia. Metric	Grit	Bore	Box Quantity
Flap	IGFC1152240	4.5	115	40	22.2	10
Flap	IGFC1152260	4.5	115	60	22.2	10
Flap	IGFC1152280	4.5	115	80	22.2	10
Flap	IGFC11522100	4.5	115	100	22.2	10
Flap	IGFC11522120	4.5	115	120	22.2	10

Dry Diamond Wheels

Comprehensive range of general purpose dry diamond blades with high diamond content sintered segments

Diamond Wheel - General Purpose/Dry Stone Cutting

Description	Part Ref	Dia. Inch	Dia. Metric	Bore	Box Quantity
Flat	DW11522	4.5	115	22.2	1
Flat	DW12522	5	125	22.2	1
Flat	DW18022	7	180	22.2	1
Flat	DW23022	9	230	22.2	1
Flat	DW30020	12	300	20	1
Flat	DW35025	14	350	25.4	1

Diamond Wheel - Continuous Rim (for cutting tiles including ceramic tiles)

Description	Part Ref	Dia. Inch	Dia. Metric	Bore	Box Quantity
Flat	DWC11522	4.5	115	22.2	1
Flat	DWC18022	7	180	22.2	1
Flat	DWC23022	9	230	22.2	1



BOLT CUTTERS

Bolt Cutters - High Tensile, Tubular Handles

Part No	Total Length	Max. Cutting Capacity	Pack Qty
ETBC14	14" (355mm)	$\frac{3}{16}$ " / 5.0mm	20
ETBC18	18" (460mm)	$\frac{1}{4}$ " / 6.4mm	10
ETBC24	24" (610mm)	$\frac{5}{16}$ " / 7.9mm	8
ETBC30	30" (762mm)	$\frac{3}{8}$ " / 9.5mm	5
ETBC36	36" (915mm)	$\frac{7}{16}$ " / 11.1mm	4



High tensile - for cutting hard materials up to 50HRC. Centre cut, strap adjusted bolt cutters with lightweight tubular handles that do not compromise strength - every pound of force applied is amplified to produce 80lbs (36kg) of force between the jaws. To maximise safety the built in stops will yield rather than break, whilst the drop forged jaws are machined to precise specifications for a resilient body and rigid cutting edge

Part No

ETBC14-RH2
ETBC18-RH2
ETBC24-RH2
ETBC30-RH2
ETBC36-RH2

Spares For Boltcutters - Tubular Handles

Replacement Jaws & Strap Set 14" (355mm)
Replacement Jaws & Strap Set 18" (460mm)
Replacement Jaws & Strap Set 24" (610mm)
Replacement Jaws & Strap Set 30" (762mm)
Replacement Jaws & Strap Set 36" (915mm)

Bolt Cutters - High Tensile, Forged Handles

Part No	Total Length	Max. Cutting Capacity	Pack Qty
EFBC14	14" (355mm)	$\frac{3}{16}$ " / 5.0mm	12
EFBC18	18" (460mm)	$\frac{1}{4}$ " / 6.4mm	12
EFBC24	24" (610mm)	$\frac{5}{16}$ " / 7.9mm	12
EFBC30	30" (762mm)	$\frac{3}{8}$ " / 9.5mm	2
EFBC36	36" (915mm)	$\frac{7}{16}$ " / 11.1mm	6
EFBC42	42" (1070mm)	$\frac{1}{2}$ " / 13mm	4



High tensile - for cutting hard materials up to 50HRC. Centre cut, arm adjusted bolt cutters with solid forged handles for maximum strength - every pound of force applied is amplified to produce 80lbs (36kg) of force between the jaws. To maximise safety the built in stops will yield rather than break, whilst the drop forged jaws are machined to precise specifications for a resilient body and rigid cutting edge

Part No

EFBC14-RH
EFBC18-RH
EFBC24-RH
EFBC30-RH
EFBC36-RH
EFBC42-RH

Spares For Boltcutters - Forged Handles

Replacement Head - 14" (355mm)
Replacement Head - 18" (460mm)
Replacement Head - 24" (610mm)
Replacement Head - 30" (762mm)
Replacement Head - 36" (915mm)
Replacement Head - 42" (1070mm)

END CUT BOLT, CABLE & WIRE CUTTERS

End Cut Bolt Cutter - 24"/600mm

Part No	Total Length	Max. Cutting Capacity	Pack Qty
EBC-EC24	24" (600mm)	5/16" / 7.9mm	1



Pincer movement makes the bolt cutter ideal for cutting in restricted areas or where a side cut is difficult, eg when cutting off bolt heads. Jaws are drop forged and machined to precise specifications for a resilient body and rigid cutting edge. Handles are solid forged and incorporate safety stops that will yield rather than break



Cable Cutters - 16"/400mm

Part No	Total Length	Max. Cutting Capacity	Pack Qty
ECC-16	16" (400mm)	16mm wire rope, and up to 21mm armoured cable	1



For cutting 16mm wire rope and up to 21mm armoured cable. The lightweight tubular steel handles reduce user fatigue during prolonged use, whilst the rubber hand grips reduce the risk of slippage. The jaws have hardened cutting edges for easy cutting



Wire & Rope Cutter - 8"/200mm

Part No	Total Length	Pack Qty
EWCS	8" (200mm)	6



Material	Recommended Capacity
Mid steel strand	6.5mm
High tensile steel rope (180kg/mm ²)	5.00mm
Soft steel wire (34kg/mm ²)	5.00mm
Copper aluminium rod	5.00mm
Steel rod (66kg/mm ²)	4.00mm
Spring wire (hardened & tempered) (180kg/mm ²)	2.5mm
Electric cable (not armoured)	6.5mm

Suitable for a multitude of agricultural, garden, automotive and marine cutting tasks. Angled and hardened blades ensure a clean cut, whilst the spring loaded head gives a fast, smooth cutting action. Includes non-slip rubber handles

GENERAL PURPOSE, JEWELLERS' & AVIATION SNIPS

General Purpose Snips

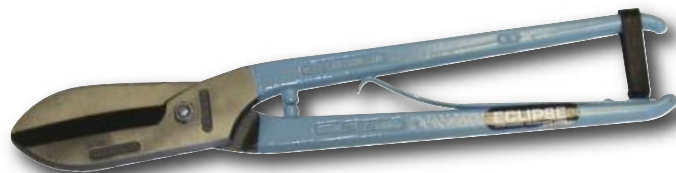


For cutting sheet metal. The precision hollow ground blades reduce friction for an easy cutting action and, since they are also induction hardened and tempered, they can be easily re-sharpened. The spring loaded nut allows for easy adjustment to increase the working life, whilst the high quality steel drop forged handles offer maximum strength

Part No	Total Length	Cutting Capacity (mild steel up to 18g)	Cutting Capacity (stainless steel up to 23g)	Pack Qty
ESGP-8	8" (200mm)	0.8mm	0.46mm	6
ESGP-10	10" (250mm)	1.0mm	0.46mm	6
ESGP-12	12" (300mm)	1.2mm	0.46mm	6
ESGP-14	14" (355mm)	1.4mm*	1.2mm**	6

* up to 16g ** up to 18g

General Purpose Snips with Spring



For cutting sheet metal. Spring handle for ease of use during repetitive cutting. The precision hollow ground blades reduce friction for an easy cutting action and, since they are also induction hardened and tempered, they can be easily re-sharpened. The leather strap ensures safe storage

Part No	Total Length	Cutting Capacity (mild steel up to 18g)	Cutting Capacity (stainless steel up to 23g)	Pack Qty
ESGPS-8	8" (200mm)	0.8mm	0.46mm	6
ESGPS-10	10" (250mm)	1.0mm	0.46mm	6
ESGPS-12	12" (300mm)	1.2mm	0.46mm	6
ESGPS-14	14" (355mm)	1.4mm*	1.2mm**	6

* up to 16g ** up to 18g

Jewellers' Snips



For cutting copper, silver and gold. The precision hollow ground blades reduce friction for an easy cutting action and, since they are also induction hardened and tempered, they can be easily re-sharpened. Integrated stops prevent trapped fingers without compromising the jaw capacity

Part No	Size	Cutting Capacity (mild steel up to 18g)	Cutting Capacity (stainless steel up to 23g)	Pack Qty
ESJ-7S	7" / 180mm (straight blade)	0.8mm	0.46mm	10
ESJ-7C	7" / 180mm (curved blade)	0.8mm	0.46mm	10



Aviation Snips



Cuts up to 1.2mm cold rolled steel and 0.7mm stainless steel. Drop forged alloy steel blades give a longer cutting life, whilst the spring loaded handles ensure a fast, smooth cutting action

PACKAGING

- Half sized transparent case allows the user to handle the snips and test the cutting action
- Small packaging size minimizes space wastage and the security tie limits the risk of theft
- Durability of the case prevents damage to the blades and provides an ideal storage facility for the snips



Part No	Description	Cutting Capacity (cold rolled steel)	Cutting Capacity (stainless steel)	Pack Qty
EAS-S	Straight and Wide Curves	1.22mm	0.7mm	6
EAS-R	Right and Straight Cut	1.22mm	0.7mm	6
EAS-L	Left and Straight Cut	1.22mm	0.7mm	6
EAS-SL	Long Cut / Straight Cut & Wide Curves	1.22mm	0.7mm	6

**COLD CHISELS
WRECKING BARS
WOOD CHISELS**



COLD CHISELS

Cold chisels and bolsters upgraded to chrome vanadium. This is both better quality and harder wearing, so needs re-sharpening less often, and is also even more resistant to mushrooming after prolonged use (Selected lines are available with hand guards in our Spear & Jackson range)

Flat Chisels

For general cutting and chipping of metals, and for shaping, facing and cutting of stonework



Part No	Length	Blade Width	Octagon Dia.	Pack Qty
CB24A	100mm (4")	6.35mm (1/4")	6.35mm (1/4")	10
CB28G	150mm (6")	6.35mm (1/4")	6.35mm (1/4")	10
CB46T	125mm (5")	9.5mm (3/8")	9.5mm (3/8")	10
CB48E	150mm (6")	9.5mm (3/8")	9.5mm (3/8")	10
CB68V	150mm (6")	12.7mm (1/2")	12.7mm (1/2")	10
CB70H	205mm (8")	12.7mm (1/2")	12.7mm (1/2")	10
CB72F	250mm (10")	12.7mm (1/2")	12.7mm (1/2")	10
CB73N	300mm (12")	12.7mm (1/2")	12.7mm (1/2")	10
CB88R	150mm (6")	15.9mm (5/8")	12.7mm (1/2")	10
CB89H	180mm (7")	15.9mm (5/8")	12.7mm (1/2")	10
CB90M	205mm (8")	15.9mm (5/8")	12.7mm (1/2")	10
CB92N	250mm (10")	15.9mm (5/8")	12.7mm (1/2")	10
CB108D	150mm (6")	19mm (3/4")	15.9mm (5/8")	10
CB110T	205mm (8")	19mm (3/4")	15.9mm (5/8")	10
CB111G	230mm (9")	19mm (3/4")	15.9mm (5/8")	10
CB112E	250mm (10")	19mm (3/4")	15.9mm (5/8")	10
CB113V	300mm (12")	19mm (3/4")	15.9mm (5/8")	10
CB116M	450mm (18")	19mm (3/4")	15.9mm (5/8")	5
CB150E	205mm (8")	25.4mm (1")	22.2mm (7/8")	5
CB151V	230mm (9")	25.4mm (1")	22.2mm (7/8")	5
CB152R	250mm (10")	25.4mm (1")	22.2mm (7/8")	5
CB153H	300mm (12")	25.4mm (1")	22.2mm (7/8")	5
CB156N	450mm (18")	25.4mm (1")	22.2mm (7/8")	5

Brick Bolsters

For cutting bricks



Part No	Length	Blade Width	Octagon Dia.	Pack Qty
CB730K	230mm (9")	75mm (3")	19mm (3/4")	5
CB740K	230mm (9")	100mm (4")	25mm (1")	5
100V with rubber grip	230mm (9")	100mm (4")	25mm (1")	5

Floorboard Chisel

For cutting floorboard tongues before lifting



Part No	Length	Blade Width	Octagon Dia.	Pack Qty
CB770K	230mm (9")	56mm (2 1/4")	17.5mm (11/16")	5

Crosscut Chisels

For cutting slots in keyways



Part No	Length	Blade Width	Octagon Dia.	Pack Qty
CB534A	150mm (6")	6.35mm (1/4")	12.7mm (1/2")	10
CB556T	200mm (8")	9.5mm (3/8")	19mm (3/4")	10

Plugging Chisel

For cutting out mortar from between bricks



Part No	Length	Blade Width	Octagon Dia.	Pack Qty
CB827V	250mm (10")	6.35mm (1/4")	15.9mm (5/8")	5

Concrete Point Chisels

For breaking up concrete



Part No	Length	Blade Width	Octagon Dia.	Pack Qty
CB292R	250mm (10")	4mm (5/32")	15.9mm (5/8")	10
CB313P	300mm (12")	4.8mm (3/16")	19mm (3/4")	10
CB353G	300mm (12")	6.35mm (1/4")	25mm (1")	5

Masons Chipping Tool

The flat side enables the smooth dressing of stone prior to the laying of roof beams and trusses forming pitched roofs. The sharp cutting edge on the solid blade is designed to take heavy blows for creating clean, smooth stonework. Solid forged construction for durability



Part No	Length	Blade Width	Octagon Dia.	Pack Qty
SJ-MCT				5

WRECKING BARS

Made from heat treated, solid forged steel for maximum strength. 30" and 36" are for demolishing large timber structures and dismantling concrete and metal constructions. 18" and 24" size are ideal for demolishing plasterboard, dismantling timber frames and pulling up floorboards. The light duty 14" is designed to pull large nails and prise or dismantle tough objects

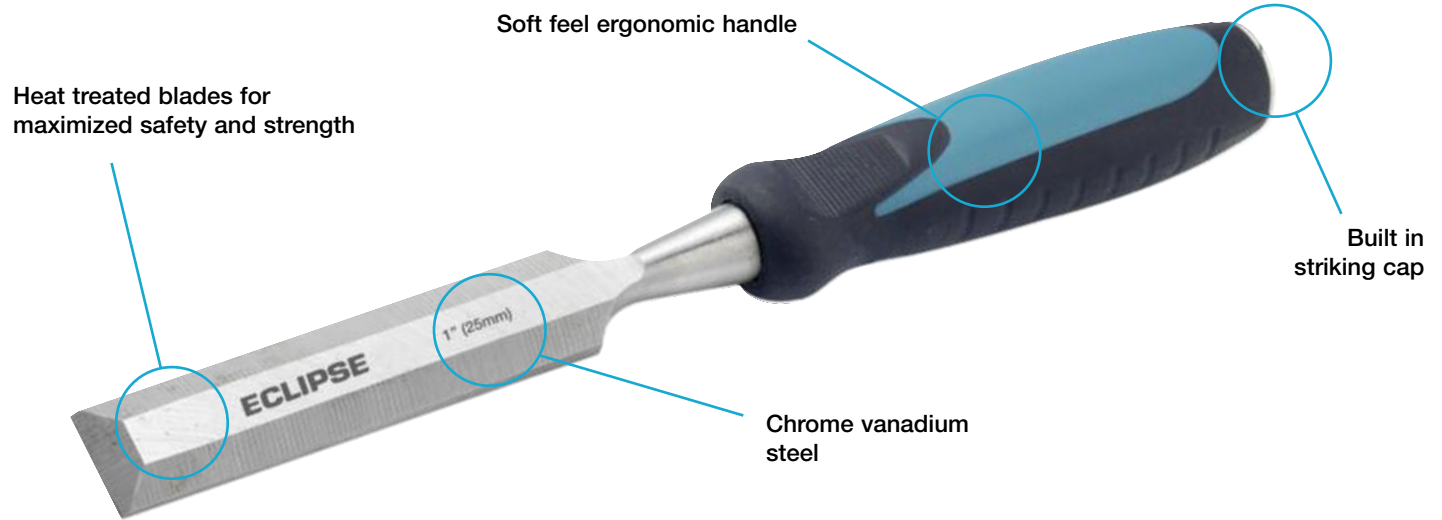
Part No	Size	Pack Qty
RIPPA14	350mm (14")	1
RIPPA18	450mm (18")	1
RIPPA24	600mm (24")	1
RIPPA30	750mm (30")	1
RIPPA36	900mm (36")	1
RIPPA3PS	Boxed set contains: 14" 24" 36" Wrecking bars	1



STATEMENT OF CONFORMITY

Cold Chisels - in general compliance with British Standard BS 3066 : 1995 - Specification for engineers' cold chisels and allied tools.

WOOD CHISELS



Wood Chisels



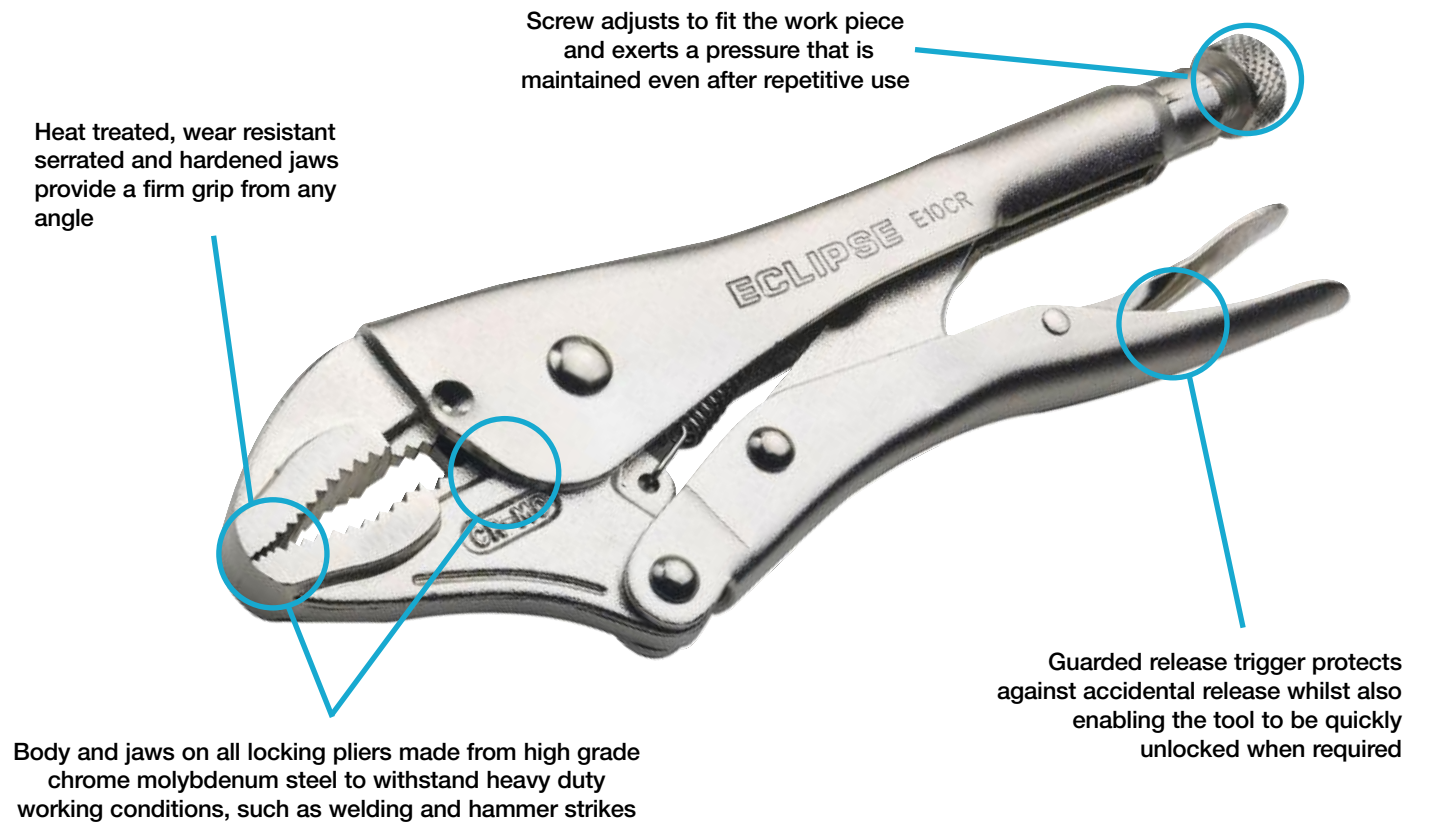
Part No	Length	Pack Qty
BEWC3/8E	3/8" (9mm) Bevel Edge	5
BEWC1/4E	1/4" (6mm) Bevel Edge	5
BEWC5/8E	5/8" (15mm) Bevel Edge	5
BEWC3/4E	3/4" (19mm) Bevel Edge	5
BEWC1/2E	1/2" (12mm) Bevel Edge	5
BEWC1E	1" (25mm) Bevel Edge	5
BEWC11/4E	1.1/4" (32mm) Bevel Edge	5
BEWC11/2E	1.1/2" (38mm) Bevel Edge	5
BEWC2E	2" (50mm) Bevel Edge	5
BEWC3BCE	3pc Set: 1/2", 3/4", 1" - blister packed	5
BEWC4BCE	4pc Set: 1/4", 1/2", 3/4", 1" - blister packed	5
BEWC6BCE	6pc Set: 1/4", 3/8", 1/2", 3/4", 1", 1.1/4" - blister packed	5
BEWC3PSE	3pc Set: 1/2", 3/4", 1" - wallet	5
BEWC6PSE	6pc Set: 1/4", 3/8", 1/2", 3/4", 1", 1.1/4" - boxed	5



LOCKING PLIERS
LOCKING C-CLAMPS



A range of top quality locking pliers and locking C-Clamps for the professional user



Locking Pliers - Typical Applications

Part No.	HVAC	Welding	Plumbing	Automotive	Electrical	Woodworking
E7R E10R	Clamping, crimping	Clamping flat, square & hex surfaces	Non slip pipe wrench, portable vice, twisting wire	Clamping, removing bolts	Portable vice, twisting wire	Portable vice, pulling out nails
E10CR	Clamping, crimping	Clamping round surfaces	Non slip pipe wrench, portable vice, twisting wire	Clamping, removing bolts	Portable vice, screwdriver lever	Portable vice, pulling out nails
E5WR E7WR E10WR	Clamping, crimping, wire cutting	Clamping round surfaces	Non slip pipe wrench, portable vice, cutting & twisting wire	Clamping, removing bolts	Portable vice, screwdriver lever, cutting & twisting wire	Portable vice, pulling out nails, cutting wire
E6LN	Clamping, crimping, wire cutting	Clamping in difficult-to-reach spaces	Repairing faucets	Removing brake springs & clips, general clamping	Bending & cutting wire	Pulling nails & staples
E6SP E11SP	Clamping welding supports	Clamping welding supports	Temporary pipe hanger	Sheet metal repair work	-	Clamping long reach, delicate woodworking work pieces
E6R E11R	Clamping welding supports	Clamping welding supports	Temporary pipe hanger	Sheet metal repair work	-	Clamping long reach woodworking work pieces
ERR	Isolating a piece of equipment by pinching off copper tubing					
E8R		Holding sheet metal during bending, forming & crimping				
E9R		Accurately aligning round & square shaped tubing				
E20R	Removing components, holding awkward shapes	Removing components, holding awkward shapes	Holding awkward shapes	Removing components, holding awkward shapes		

LOCKING JAW PLIERS & LOCKING C-CLAMPS

STRAIGHT JAW

Part No.	Size	Maximum Jaw Capacity	Box Qty
E7R	175mm (7")	34mm (1 1/2")	5
E10R	250mm (10")	34mm (1 1/2")	5



Straight jaws are ideal for use with flat, square and hex workpieces



CURVED JAW

Part No.	Size	Maximum Jaw Capacity	Box Qty
E10CR	250mm (10")	34mm (1 1/2")	5



Designed for gripping and clamping round surfaces

CURVED JAW with wire cutter

Part No.	Size	Maximum Jaw Capacity	Box Qty
E5WR	125mm (5")	32mm (1 1/4")	5
E7WR	175mm (7")	34mm (1 1/2")	5
E10WR	250mm (10")	34mm (1 1/2")	5



Designed for gripping and clamping round surfaces. Incorporates a wire cutter



LONG NOSE with wire cutter

Part No.	Size	Maximum Jaw Capacity	Box Qty
E6LN	150mm (6")	51mm (2")	5



Particularly suited for clamping and tightening bolts in confined spaces. Also ideal for precision work. Incorporates a wire cutter



LOCKING C-CLAMPS with regular tips

Part No.	Size	Maximum Jaw Capacity	Box Qty
E6R	150mm (6")	44mm (1 3/4")	5
E11R	275mm (11")	80mm (3 1/4")	5



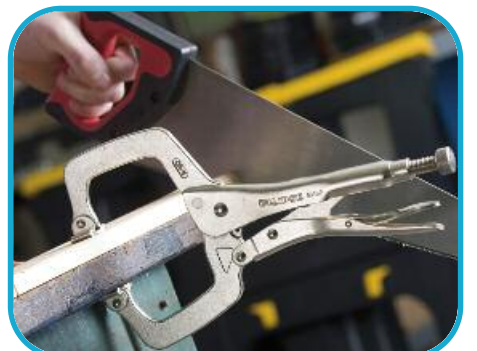
The wide opening jaws are designed to reach around and grip awkward shapes. Provide a deep reach

LOCKING C-CLAMPS with swivel pads

Part No.	Size	Maximum Jaw Capacity	Box Qty
E6SP	150mm (6")	44mm (1 3/4")	5
E11SP	275mm (11")	80mm (3 1/4")	5



The wide opening jaws are designed to reach around and grip awkward shapes whilst the swivel pad protect delicate workpieces from damage. Provide a deep reach



LOCKING JAW PLIERS & LOCKING C-CLAMPS

LOCKING PINCH OFF PLIERS

Part No.	Size	Maximum Jaw Capacity	Box Qty
ERR	175mm (7")	6mm (1/4")	5



Provides a temporary, hands free seal on tubing

LOCKING SHEET METAL TOOL

Part No.	Maximum Jaw Capacity	Box Qty
E8R	78mm (3/4")	6



Grips and locks on to sheet metal when bending, forming, and crimping

LOCKING WELDING CLAMP

Part No.	Maximum Jaw Capacity	Box Qty
E9R	44mm (1 1/2")	6



U-shaped jaws accurately align round and square shaped tubing when welding

LOCKING CHAIN CLAMP

Part No.	Chain Size	Box Qty
E20R	455mm (18")	5



Grips and holds awkward shapes up to 18"/455mm in diameter. Ideal for working with pipes in confined spaces, eg. up against a wall



Rockwell Hardness Testing

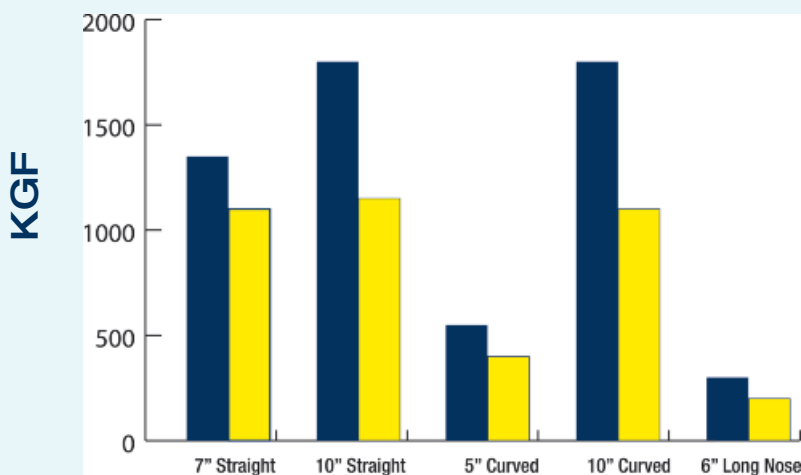


Torsion Testing

LOAD TEST RESULTS

ECLIPSE
ASME Specification

The American Society of Mechanical Engineers







Tensile Compress Testing



ECLIPSE RANGE VDE RANGE



Pliers cutting key

Symbol	Type of Wire	Example	Tensile strength ca. N/mm²
	Soft wire	Copper, Aluminium	220 - 250
	Medium hard wire	Iron wire	750 - 800
	Hard wire	Steel wire	1700 - 1800
	Piano wire	Hardened spring steel	2200 - 2300

ECLIPSE PLIERS

Engineers' Pliers

Part No	Size	Soft	Med Hard	Hard	Piano	Pack Qty
PW21696/11	160mm (6")	4.0	2.8	1.8	1.4	5
PW21697/11	180mm (7")	4.0	3.0	2.0	1.6	5
PW21698/11	200mm (8")	4.0	3.0	2.0	1.6	5
PW216910/11	250mm (10")	6.0	4.0	2.8	2.4	5



Multi-purpose pliers for cutting, gripping and twisting. Induction hardened cutting edges for cutting medium hard wire. Pipe grip for gripping pipes, rods and other components. Serrated jaw for gripping nuts, bolts, studs and similar objects. Joint cutter for cleanly cropping soft wire. Ergonomic soft feel handles

Long Nose Pliers

Part No	Size	Soft	Med Hard	Hard	Piano	Pack Qty
PW5835/11	140mm (5½")	3.0	2.5	1.6	1.2	5
PW5836/11	160mm (6")	4.0	2.8	1.8	1.4	5
PW10638/11	200mm (8")	4.0	3.0	2.0	1.6	5



Long tapering jaws for gripping in confined spaces and side cutter for cutting medium hard wire. Fine jaw ends for gripping and manoeuvring small objects. Serrated jaws for extra grip. Induction hardened cutting edges for cutting medium hard wire. Ergonomic soft feel handles

Snipe Nose Pliers

Part No	Size	Pack Qty
PA15436/11	160mm (6")	5
PA15438/11	200mm (8")	5



Long tapering jaws for gripping in confined spaces. Fine serrated jaws for gripping components. Fine jaw ends capable of gripping and manoeuvring small objects. Long tapering jaws for accessing confined places. Ergonomic soft feel handles

Round Nose Pliers

Part No	Size	Pack Qty
PA14736/11	160mm (6")	5



For internal gripping of hollow items and for looping wire or thin strips of material. Smooth conical jaws for forming loops. Tapering jaws allow for loops of different sizes. Ergonomic soft feel handles

Diagonal Cutting Nippers

Part No	Size	Soft	Med Hard	Hard	Piano	Pack Qty
PW7735/11	125mm (5")	3.0	2.5	1.6	1.2	5
PW7736/11	160mm (6")	4.0	3.0	2.0	1.6	5
PW7737/11	180mm (7")	4.0	3.0	2.0	1.6	5



For cutting medium to hard wire. Tapering head shape to access confined spaces. Induction hardened cutting edges. Design of cutter face allows wire to be cut close to surface. Rounded jaw ends provide strength in area where majority of cutting takes place. Ergonomic soft feel handles

Diagonal Cutting Nippers - heavy duty

Part No	Size	Soft	Med Hard	Hard	Piano	Pack Qty
PW7738/11	200mm (8")	5.0	3.5	2.4	2.0	5



Ideally suited for cutting hard wire. Tapering head shape to access confined spaces. Induction hardened cutting edges. Design of cutter face allows wire to be cut close to surface. Rounded jaw ends provide strength in area where majority of cutting takes place. Ergonomic soft feel handles

Diagonal Cutting Nipper - high leverage

Part No	Size	Soft	Med Hard	Hard	Piano	Pack Qty
PW14537/11	180mm (7")	4.0	3.0	2.0	1.6	5



Heavy duty nipper for cutting hard wire. High leverage design means less effort is required in cutting process. Induction hardened cutting edges for hard wire. Lay joint for added strength. Ergonomic soft feel handles

End Cutting Nipper

Part No	Size	Soft	Med Hard	Hard	Piano	Pack Qty
PW9637/11	165mm (6½")	4.0	3.0	2.0	1.6	5



Heavy duty end cutting nippers for cutting hard wire. For cutting wire flush to a surface. Induction hardened cutting edges. Specially designed for cutting wire not accessible from the side allows knuckle clearance. Ergonomic soft feel handles

End Wire Stripper

Part No	Size	Dia mm	Dia mm²	Pack Qty
PA19536/11	160mm (6")	2.0	1.6	5



Removes insulation from cable without damaging the core. Suitable for a variety of cable sizes. Adjustable stop screw allows setting of required wire stripping diameter. Knurled screw head allows one hand adjustments. Spring return for automatic handle opening. Ergonomic soft feel handles

ECLIPSE SPECIAL PURPOSE PLIERS

Carpenters' Pincers

Part No	Size	Pack Qty
PB807/11	180mm (7")	5
PB808/11	200mm (8")	5



For gripping and extracting nails and tacks. Bevelled jaw edges for gripping nails without cutting them. Curved jaw to enable rocking of tool to lever nails and tacks. PVC dip handles

Cable Croppers

Part No	Size	Dia mm	Dia mm ²	Pack Qty
PA196810/11	250mm (10")	2.0	1.6	5



Specially designed cutting edges ensure ends of cable do not fray. For soft cables only (not to be used on cable with a hard core / outer eg. steel). PVC dip handles

Revolving Punch Pliers

Part No	Size	Pack Qty
PA2238/11	200mm (8")	5



Capable of punching several hole sizes. Hardened punch edges for longer life. Wear pad ensures material being cut is not damaged. Punch sizes: $\frac{5}{64}$ ", $\frac{3}{32}$ ", $\frac{7}{64}$ ", $\frac{1}{8}$ ", $\frac{5}{32}$ ", $\frac{3}{16}$ " inch

Waterpump Pliers - slip joint

Part No	Size	Capacity mm	Pack Qty
PA4069/11	250mm (10")	0-42	5



Adjustable pliers for gripping pipes, nuts and bolts. Sliding pivot gives a wide range of jaw openings. Joint protector ensures handles cannot close together and trap fingers. Offset jaws to provide more accurate gripping when jaw grip is applied. PVC dip handles

Waterpump Pliers - groove joint

Part No	Size	Capacity mm	Pack Qty
PA45410/11	250mm (10")	0-42	5



Adjustable pliers for gripping pipes, nuts and bolts. Sliding pivot gives a wide range of jaw openings. Joint protector ensures handles cannot close together and trap fingers. Offset jaws to provide more accurate gripping when jaw grip is applied. PVC dip handles

Waterpump Pliers - box joint

Part No	Size	Capacity mm	Pack Qty
PA55510/11	250mm (10")	0-36	5



Adjustable pliers for gripping pipes, nuts and bolts. Sliding pivot gives a wide range of jaw openings. Joint protector ensures handles cannot close together and trap fingers. Offset jaws to provide more accurate gripping when jaw grip is applied. PVC dip handles

Engineers' Pliers - unsleeved

Part No	Size	Soft	Med Hard	Hard	Piano	Pack Qty
PW2166/11	160mm (6")	4.0	2.8	1.8	1.4	5
PW21610/11	250mm (10")	6.0	4.0	2.8	2.4	5



For use in environments where bare metal handles are appropriate. The handles are impervious to swarf, glass chippings and heat melting. Multi-purpose pliers for cutting, gripping and twisting. Induction hardened cutting edges for cutting medium hard wire. Pipe grip for gripping pipes, rods and other components. Serrated jaw for gripping nuts, bolts, studs and similar objects. Joint cutter for cleanly cropping soft wire. Unsleeved handles

Glass Pliers

Part No	Size	Pack Qty
PA10148/11	200mm (8")	5



For holding and shaping glass. Painted handles stop splinters of glass from embedding in handles. Jaws do not meet immediately in front of pivot to ensure glass can be gripped up to cut line. Used to snap off a narrow strip of scored glass or nibble back to a line or around a curve. Painted handles

Gas Pliers

Part No	Size	Pack Qty
PA788/11	200mm (8")	5



Designed to grip pipework of different sizes. Multi-purpose tool which includes a joint cutter. Two curved serrated sections to grip pipes of varying sizes. 'V' notch in front of each jaw to grip wire. Wire cropper located near pivot. Handles shaped to form a pipe reamer and turn screw respectively. Unsleeved handles

Wire Stripper Crimper

Part No	Size	Stripping Capacity	Pack Qty
PA18518/11	200mm (8")	0.13-6.00 sq mm	5



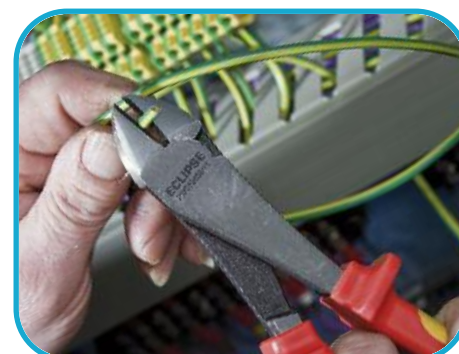
Designed to cut the cable sheath and crimp the wire. Alloy steel jaws capable of stripping all types of wire. Unique, fully automatic design makes wire stripping easy. Multi-purpose tool combining stripping, crimping and cutting. Sleeved handles

Wire Stripper Crimper - heavy duty

Part No	Size	Stripping Capacity	Pack Qty
PA18518HD/11	200mm (8")	0.13-8.00 sq mm	5



Designed to cut the cable sheath and crimp the wire. Alloy steel jaws capable of stripping all types of wire. Unique, fully automatic design makes wire stripping easy. Multi-purpose tool combining stripping, crimping and cutting. Sleeved handles



VDE INSULATED SAFETY PLIERS & SCREWDRIVERS

VDE

Designed, manufactured and individually tested for use around live working circuits up to 1000 volts.

VDE INSULATED PLIERS & SCREWDRIVERS

ECLIPSE VDE insulated pliers & screwdrivers are 100% tested in accordance with IEC 900/DIN EN 60900/VDE 0682 PART 201 and meet the high safety requirements of these standards. All pliers & screwdrivers are individually tested in a waterbath to withstand 10,000 volts A.C. Additional tests are performed on the ergonomic safety handles between temperatures of -20°C and +70°C to ensure resistance to cracking and stripping. Flame retardancy properties are tested in an open gas flame. This specialised range of **ECLIPSE** pliers & screwdrivers can therefore be guaranteed to provide the user with complete peace of mind

WARNING

Do not use on live circuits. Electrical installations should be disconnected from their mains supply before work is carried out. Do not touch non-insulated areas of tool when in use

PRODUCT CARE

Always visually inspect pliers & screwdrivers before use. If the insulation is damaged or marked in any way, the pliers should not be used near live electrical circuits. To ensure satisfaction from this product, it should be kept clean and carefully stored in a contaminant free, dry environment when not in use

VDE Screwdriver Set

Part No	Contains	Pack Qty
SD7SETVDE	Slotted: 3 x 100mm, 4 x 100mm, 5.5 x 125mm Poz: 6.5 x 150mm, PZ1 x 80mm, PZ2 x 100mm Mains tester	1



Precision hardened chrome vanadium / molybdenum steel with durable non-peel black finish. Hanging hole for secure workshop storage. Blade insulation directly moulded onto the blade to safeguard against electrical shocks. Ergonomic soft grip handle

Side Cutters

Part No	Size	Soft	Med Hard	Hard	Piano	Pack Qty
PWSF7746/11	165mm (6 1/2")	4.0	3.0	2.0	1.6	5



For cutting medium to hard wire. Tapering head shape to access confined spaces and induction hardened cutting edges. Design of cutter face allows wire to be cut close to surface. Rounded jaw ends provide strength in area where majority of cutting takes place. Ergonomic soft feel handles

Diagonal Cutting Nipper - heavy duty

Part No	Size	Soft	Med Hard	Hard	Piano	Pack Qty
PWSF8856/11	165mm (6 1/2")	4.0	3.0	2.0	1.6	5
PWSF8858/11	200mm (8")	5.0	3.5	2.4	2.0	5



Heavy duty for cutting hard wire. Tapering head shape to access confined spaces and induction hardened cutting edges. Design of cutter face allows wire to be cut close to surface. Rounded jaw ends provide strength in area where majority of cutting takes place. Ergonomic soft feel handles

Combination Pliers

Part No	Size	Soft	Med Hard	Hard	Piano	Pack Qty
PWSF21647/11	180mm (7")	4.0	3.0	2.0	1.6	5
PWSF21648/11	200mm (8")	4.0	3.0	2.0	1.6	5



Multi-purpose pliers for cutting, gripping and twisting. Induction hardened cutting edges for cutting medium hard wire. Pipe grip for gripping pipes, rods and other components. Serrated jaw for gripping nuts, bolts, studs and similar objects. Joint cutter for cleanly cropping soft wire. Ergonomic soft feel handles

Long Nose Pliers

Part No	Size	Soft	Med Hard	Hard	Piano	Pack Qty
PWSF10648/11	200mm (8")	4.0	3.0	2.0	1.6	5



Long tapering jaws for gripping in confined spaces and side cutter for cutting medium hard wire. Fine jaw ends for gripping and manoeuvring small objects. Serrated jaws for extra grip. Induction hardened cutting edges for cutting medium hard wire. Ergonomic soft feel handles

Bent Long Nose Pliers

Part No	Size	Soft	Med Hard	Hard	Piano	Pack Qty
PWSF10748/11	200mm (8")	4.0	3.0	2.0	1.6	5



Long tapering jaws for gripping in confined spaces and side cutter for cutting medium hard wire. Fine jaw ends for gripping and manoeuvring small objects. Serrated jaws for extra grip. Induction hardened cutting edges. Bent nose with angled jaws for extra access. Ergonomic soft feel handles

End Wire Stripper

Part No	Size	Dia mm	Dia mm²	Pack Qty
PWSF19546/11	160mm (6")	6 sq mm		5



Removes insulation from cable without damaging the core. Suitable for a variety of cable sizes. Adjustable stop screw allows setting of required wire stripping diameter. Knurled screw head allows one hand adjustments. Spring return for automatic handle opening. Ergonomic soft feel handles

MECHANICS' VICES, SPARES & ACCESSORIES

WOODWORKING VICES

G-CLAMPS

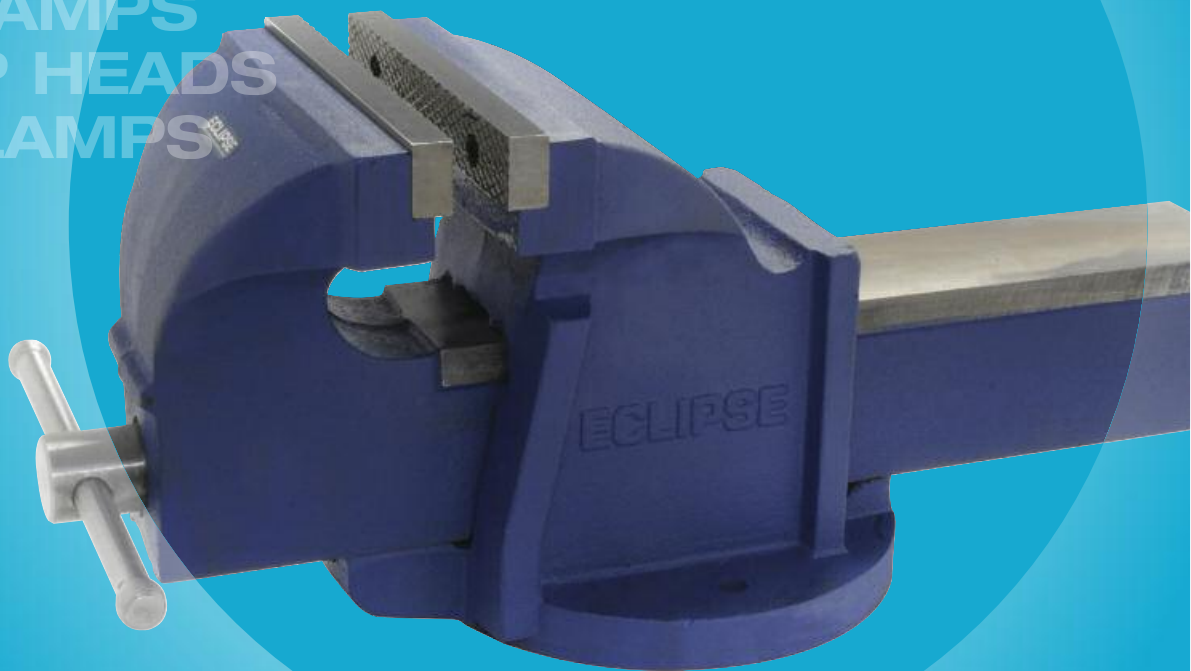
ONE HANDED BAR CLAMPS & SPREADERS

SCREW CLAMPS

SASH CLAMPS

& CLAMP HEADS

T-BAR CLAMPS

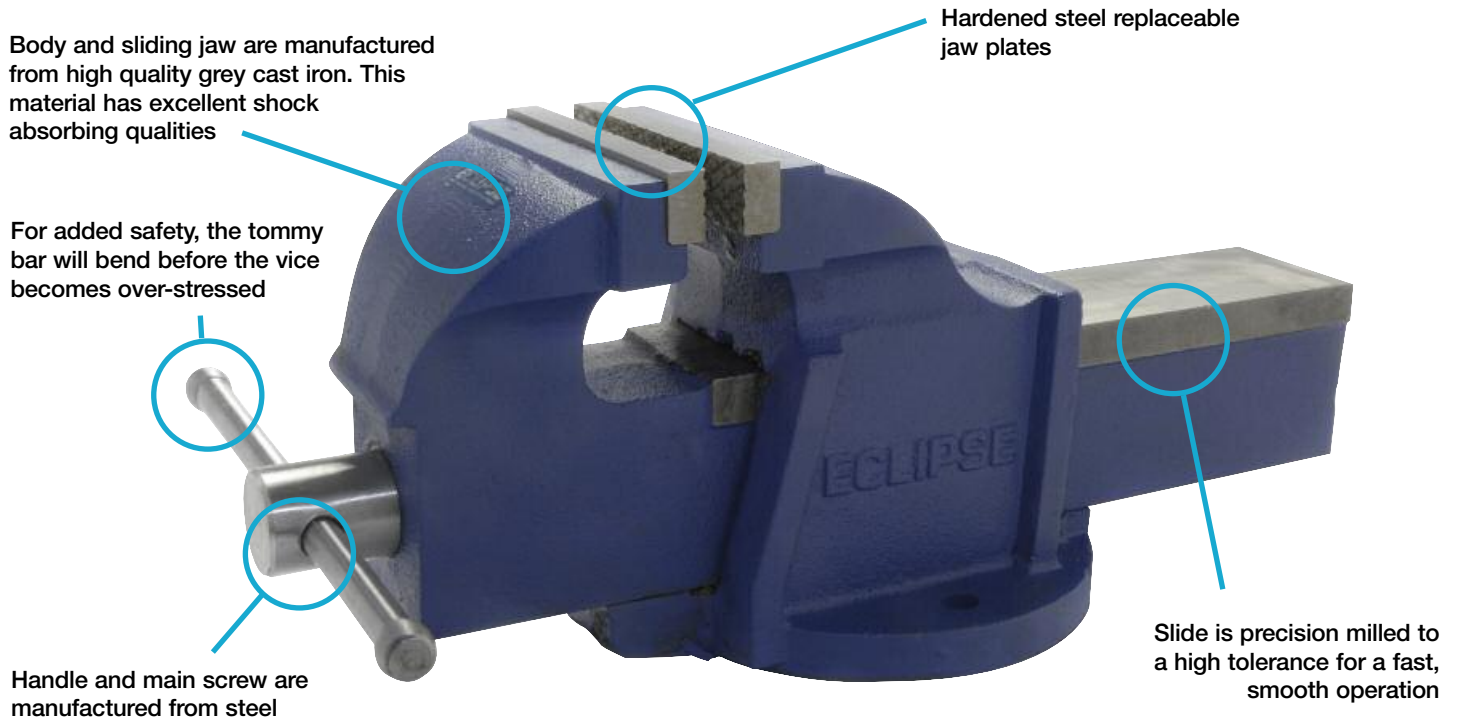


Workholding Range - Average Clamping Forces

Range	Average Clamping Force	Main Tasks
VICES		
Mechanics' Vices	4,500lbs - 10,100lbs (2,040kg - 4,580kg)	General metalworking applications
Quick Release Woodworking Vices	1,900lbs (860kg)	Holding large pieces of wood for cutting and gluing
Plain Screw Woodworking Vices	1,900lbs (860kg)	Holding large pieces of wood for cutting and gluing
CLAMPS		
T-Bar Clamps	2,200lbs (1,000kg)	Clamping heavy pieces of furniture when gluing
Sash Clamps	1,100lbs (500kg)	Clamping heavy pieces of furniture when gluing
Clamp Heads	Light Duty (depends on timber used)	Low cost alternative to sash clamps
G Clamps (Extra heavy duty)	Frame Proof Loads 3,300lbs - 4,500lbs (1500kg - 2050kg)	Heavy duty fabrication and engineering tasks
G Clamps (Heavy duty)	Frame Proof Loads 660lbs - 1,700lbs (300kg - 770kg)	Multi-purpose - generally woodworking & metalworking
Screw Clamps (Mid range)	660lbs (300kg)	Lightweight wood/metal clamping
One Handed Bar Clamp & Spreaders	150kg	A 'third hand'

VICES

For general metalworking applications



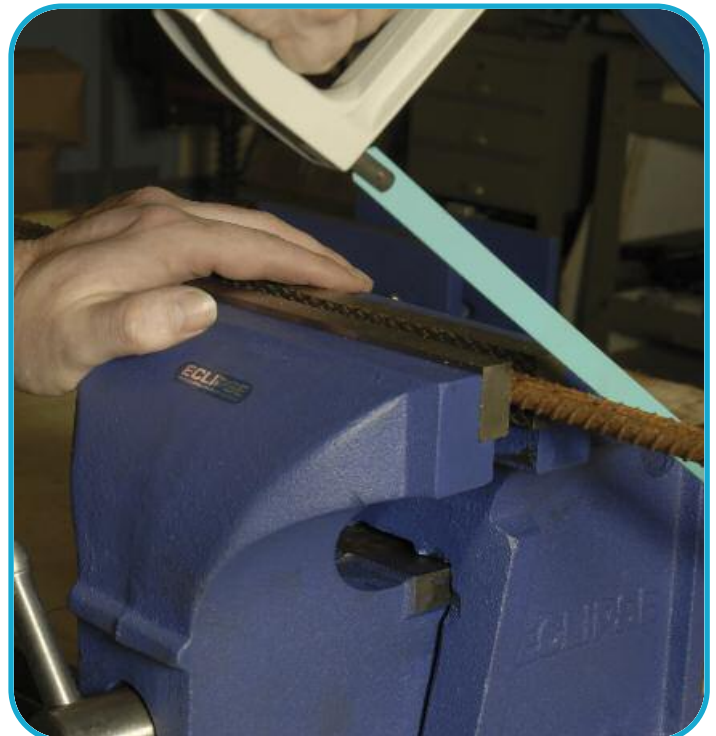
Mechanics' Vices

The body and sliding jaw are manufactured from high quality grey cast iron, which has excellent shock absorbing qualities. The precision milled slide ensures a fast, smooth operation, whilst the fused tommy bar will bend before the vice can become over-stressed. Includes hardened steel replaceable jaws and fixing holes for bench mounting

Part No	Jaw Width	Throat Depth (mm)	Opening (mm)	Clamping Force (kN)	Net Weight (kg)	Qty per pallet
EMV-1	3" / 75mm	48	82	20	4.8	144
EMV-3	4" / 100mm	63	109	25	9.3	90
EMV-5	5" / 125mm	73	136	30	15.8	40
EMV-6	6" / 150mm	86	168	35	24.2	36
EMV-8	8" / 200mm	103	208	45	38.1	24

Jaw Plates with Screws (pair)

Part No	Description	Pack Qty
EMV-1JPS	For use with EMV-1	1
EMV-3JPS	For use with EMV-3	1
EMV-5JPS	For use with EMV-5	1
EMV-6JPS	For use with EMV-6	1
EMV-8JPS	For use with EMV-8	1



VICES

Swivel Bases

For use with Eclipse Mechanics' Vices

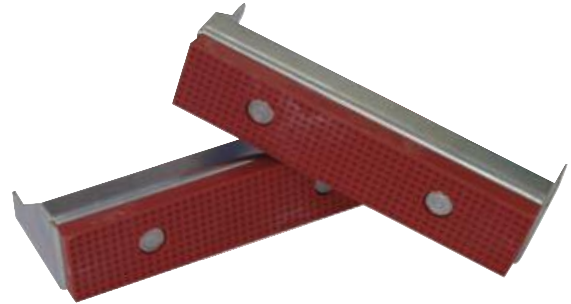


Includes three mount holes for attaching to a workbench. Rotates through 360° to lock the vice into the required working position

Part No	Size	For use with
EMVSB-1	Swivel Base for 3" (75mm) Vice	EMV-1
EMVSB-3	Swivel Base for 4" (100mm) Vice	EMV-3
EMVSB-5	Swivel Base for 5" (125mm) Vice	EMV-5
EMVSB-6	Swivel Base for 6" (150mm) Vice	EMV-6
EMVSB-8	Swivel Base for 8" (200mm) Vice	EMV-8

Fibre Grips

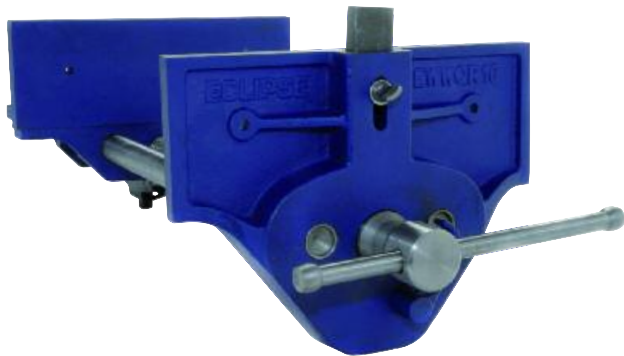
For use with Eclipse Mechanics' Vices



A range of high quality fibre grips for use with Eclipse Mechanics' Vices. Prevents damage to workpieces with soft or polished surfaces. Supplied in pairs

Part No	Size	For use with	Pack Qty
EFG1	3" (75mm)	EMV-1	10
EFG3	4" (100mm)	EMV-3	10
EFG5	5" (125mm)	EMV-5	10
EFG6	6" (150mm)	EMV-6	10
EFG8	8" (200mm)	EMV-8	10

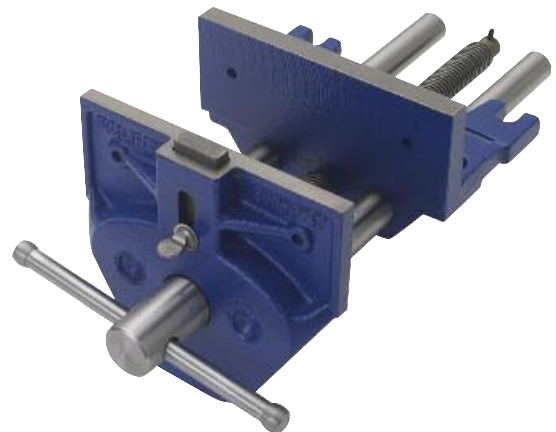
Quick Release Woodworking Vices



Quick release trigger opens and closes the vice quickly without using the mainscrew. Fitted with an adjustable front stop – or dog – that gives an additional clamping facility when used with a bench stop, to provide a normal vice and a tail vice in one tool. To increase safety, the fused tommy bar will bend before the vice can become over-stressed

Part No	Jaw Width	Throat Depth (mm)	Opening (mm)	Net Weight (kg)	Qty per pallet
EWWR7	7" / 178mm	80	202	9.4	60
EWWR9	9" / 230mm	106	260	15.5	32
EWWR10	10" / 254mm	100	380	17.7	24

Plain Screw Woodworking Vices



Plain screw mechanism works through a separate unbreakable nut housed beneath the body seating, to ensure the constant alignment of the screw mechanism. Precision machined grey cast iron body and front to ensure a smooth, parallel action. Fitted with an adjustable front stop – or dog – that gives an additional clamping facility when used with a bench stop, to provide a normal vice and a tail vice in one tool. To increase safety, the fused tommy bar will bend before the vice can become over-stressed

Part No	Jaw Width	Throat Depth (mm)	Opening (mm)	Net Weight (kg)	Qty per pallet
EWWR7	7" / 178mm	80	202	9.4	60
EWWR9	9" / 230mm	106	260	15.5	32

CLAMPS

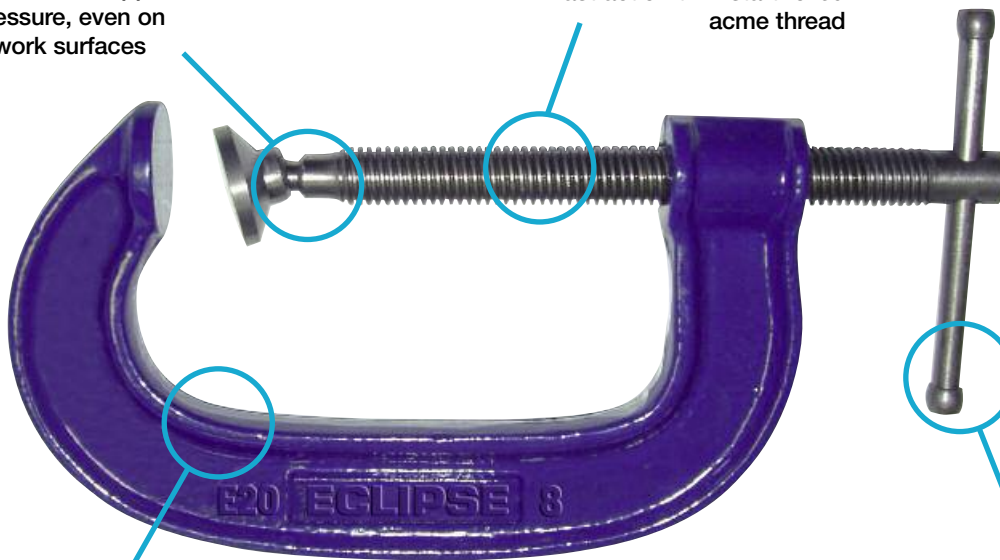
For woodworking & metalworking applications

Steel swivel shoe applies an even pressure, even on angled work surfaces

Fast action twin start rolled acme thread

Guaranteed unbreakable malleable iron frame

Tommy bar will bend before the frame can become over-stressed



G Clamps - Heavy Duty

G Clamps - Extra Heavy Duty



Average clamping force of 300 – 800kg (660 – 1760lbs). Guaranteed unbreakable malleable iron frame with a fast action twin start rolled acme thread. The steel swivel shoe applies an even pressure, even on angled surfaces, whilst the Tommy bar will bend before the frame can become over-stressed.

Ideal for heavy duty fabrication and engineering tasks, where very high clamping forces are often required. Sturdy, drop forged steel frame gives a proof load of over 2,000kg (4,400lbs) on the larger sizes. Substantial acme thread for greater applicable torque. The Tommy bar will bend before the frame can become over-stressed, whilst the swivel shoe applies an even pressure on angled surfaces

Part No	Clamping Capacity	Frame Proof Loads	Pack Qty
E20-3	3" (75mm)	1000lbs / 455kg	6
E20-4	4" (100mm)	1200lbs / 545kg	6
E20-6	6" (150mm)	1400lbs / 636kg	6
E20-8	8" (200mm)	1700lbs / 773kg	2
E20-10	10" (250mm)	2000lbs / 909kg	2
E20-12	12" (300mm)	2500lbs / 1136kg	2

Part No	Clamping Capacity	Frame Proof Loads	Pack Qty
E21-3	3" (75mm)	3300lbs / 1500kg	4
E21-4	4" (100mm)	4400lbs / 2000kg	4
E21-6	6" (150mm)	4840lbs / 2200kg	4
E21-8	8" (200mm)	4840lbs / 2200kg	2
E21-10	10" (250mm)	4500lbs / 2050kg	2
E21-12	12" (300mm)	4500lbs / 2050kg	2

CLAMPS

One Handed Bar Clamps & Spreaders



Quick release trigger enables the clamp to be quickly positioned and released, whilst the jaw release clip mechanism allows the jaw to be removed and re-attached to the other end of the bar, thus converting the clamp into a spreader. The carbon steel bar and reinforced nylon body make it both tough and durable, whilst the ergonomically-designed, soft feel pistol grip handle fits easily into the hand. In addition, the toe-in feature means that, when fully closed, the jaws only meet at the top, thus providing an even clamping force across the whole depth of the workpiece. Non-marring pads firmly grip and protect the workpiece

Part No	Clamping Capacity	Spreading Capacity (Min)	Spreading Capacity (Max)	Jaw Depth	Pack Qty
EOHBC6	6" (150mm)	6" (168mm)	13" (340mm)	3" (85mm)	1
EOHBC6X2*	6" (150mm)	6" (168mm)	13" (340mm)	3" (85mm)	5
EOHBC12	12" (300mm)	6" (168mm)	19" (495mm)	3" (85mm)	1
EOHBC18	18" (450mm)	6" (168mm)	25" (645mm)	3" (85mm)	1
EOHBC24	24" (600mm)	6" (168mm)	31" (800mm)	3" (85mm)	1
EOHBC36	36" (900mm)	6" (168mm)	43" (1105mm)	3" (85mm)	1

* 6" (150mm) in pairs - in a display box of 5

Screw Clamps



DIN5117 standard clamps with an average clamping force of 300kg (660lbs). The sliding head quickly sets the clamp to the required capacity, whilst the serrated grooves on the corrosion resistant nickel plated bar prevent slippage in use. The cast iron malleable heads offer maximum strength and the wooden handle provides a firm and comfortable grip.

Part No	Clamping Capacity	Clamping Depth	Pack Qty
EC-SCR8	8" / 200mm	120mm / 4 3/4"	10
EC-SCR12	12" / 300mm	120mm / 4 3/4"	10
EC-SCR16	16" / 400mm	120mm / 4 3/4"	10
EC-SCR24	24" / 600mm	120mm / 4 3/4"	10
EC-SCR32	32" / 800mm	120mm / 4 3/4"	6

Sash Clamps & Clamp Heads



ECHX2

Sash clamps have an average clamping force of 500kg (1100lbs). The ductile head and slide are guaranteed unbreakable, whilst the steel bar offers maximum tensile and yield strength. The slightly tapered jaws enable perfectly parallel clamping and the fast action rolled thread applies pressure quickly and smoothly to the workpiece

Part No	Maximum Clamping Capacity / Type	Bar Length	Box Qty
ESC24	24" (600mm)	30" (760mm)	6
ESC30	30" (760mm)	36" (915mm)	6
ESC36	36" (915mm)	42" (1070mm)	6
ESC42	42" (1070mm)	48" (1220mm)	6
ESC48	48" (1220mm)	54" (1370mm)	6
ESC54	54" (1370mm)	60" (1525mm)	6
ESC66	66" (1680mm)	72" (1830mm)	6
ESC-TSPC	Spare - Tail slide, peg & chain	-	1
ESC-PC	Spare - Peg & Chain	-	1
ECHX2	Clamp Heads (pair)	-	4

T-Bar Clamps



Average clamping force of 1000kg (2200lbs). The drilled feet in the fixed head enable the clamp to be mounted to a workbench. The ductile head and slide are guaranteed unbreakable, whilst the steel bar offers maximum tensile and yield strength. The slightly tapered jaws enable perfectly parallel clamping and the fast action rolled thread applies pressure quickly and smoothly to the workpiece

Part No	Maximum Clamping Capacity	Bar Length	Box Qty
ETBR42	42" (1070mm)	48" (1220mm)	4
ETBR48	48" (1220mm)	54" (1370mm)	4
ETBR54	54" (1370mm)	60" (1525mm)	4
ETBR66	66" (1680mm)	72" (1830mm)	4
ETBR78	78" (1980mm)	84" (2135mm)	4

PIPE WRENCHES
ADJUSTABLE WRENCHES
CHAIN PIPE WRENCHES
HINGED PIPE VICES
PIPE CUTTERS
HAND BENDER



WRENCHES & PIPE VICES

Leader Pattern Pipe Wrenches



The frame and handle are made from a one piece ductile iron casting which is guaranteed unbreakable, whilst the flash hardened teeth increase wear resistance. The hardened and tempered steel adjustment nut gives a longer working life and the precision machined screw thread and spring jaw remain open until pressure is applied. Can also be used as a crude hammer. Conforms to British Standard BS3594.

Part No	Length (when open)	Pipe Capacity	Box Qty
ELPW8	8" (200mm)	1" (25mm)	4
ELPW10	10" (250mm)	1½" (38mm)	4
ELPW12	12" (300mm)	2" (51mm)	4
ELPW14	14" (350mm)	2" (51mm)	4
ELPW18	18" (450mm)	2½" (63mm)	4
ELPW24	24" (600mm)	3" (76mm)	1
ELPW36	36" (910mm)	5" (127mm)	1
ELPW48	48" (1200mm)	6" (152mm)	1



Stillson Pattern Pipe Wrenches



The hardened and tempered hook jaw eliminates breakage, whilst the flash hardened teeth increase wear resistance. The nut abutment means that all loading is transferred direct from the handle to the nut and jaw via the nut abutment, ensuring that the frame is not load bearing, thus reducing the possibility of frame failure. Conforms to British Standard BS3594.

Part No	Length (when open)	Pipe Capacity	Box Qty
ESPW8	8" (200mm)	¾" (19mm)	6
ESPW10	10" (250mm)	1" (25mm)	6
ESPW12	12" (300mm)	1¼" (32mm)	6
ESPW14	14" (350mm)	1½" (38mm)	6
ESPW18	18" (450mm)	2" (51mm)	4
ESPW24	24" (600mm)	2½" (63mm)	1
ESPW36	36" (910mm)	3½" (89mm)	1

Adjustable Wrenches



The extra wide jaw can be used to tighten large nuts and bolts, whilst the metric scale laser etched onto the jaw ensures fast setting of the tool. The rust resistant lacquer increases the product life and the ergonomic soft feel sleeve gives maximum comfort and grip.

Part No	Description	Jaw Width	Pack Qty
ADJW6	6" (150mm)	1½" (27mm)	5
ADJW8	8" (200mm)	1¾" (33mm)	5
ADJW10	10" (250mm)	1½" (38mm)	5
ADJW12	12" (300mm)	1¾" (45mm)	5



WRENCHES & PIPE VICES

Adjustable Wrenches - Standard Handle



The extra wide jaw can be used to tighten large nuts and bolts, whilst the metric scale laser etched onto the jaw ensure fast setting of the tool. The rust resistant lacquer increases the product life, whilst the ergonomic handle includes an offset ring spanner

Available May 2011

Part No	Length	Jaw Width	Pack Qty
ADJW6S	6" (150mm)	1 ¹ / ₈ " (27mm)	5
ADJW8S	8" (200mm)	1 ¹ / ₈ " (33mm)	5
ADJW10S	10" (250mm)	1 ¹ / ₂ " (38mm)	5
ADJW12S	12" (300mm)	1 ³ / ₄ " (45mm)	5
ADJW15S	15" (375mm)	1 ³ / ₄ " (45mm)	2

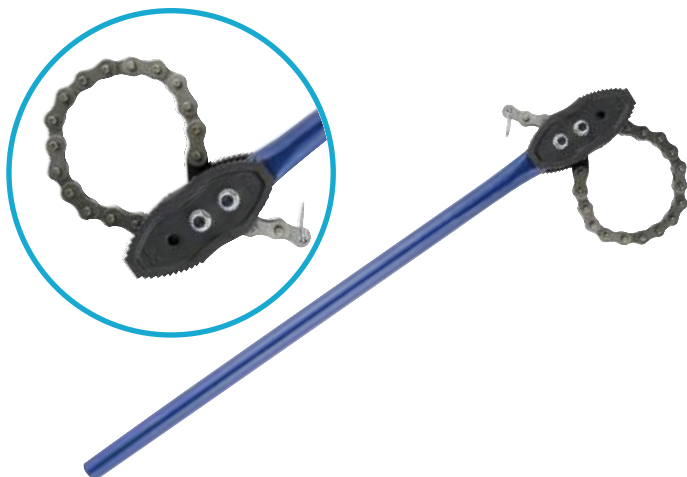
Swedish Pattern Pipe Wrenches



Bent nose 90 degree angled head. Manufactured from drop forged, hardened chrome vanadium steel. Hardened jaws.

Part No	Length (when open)	Pipe Capacity	Pack Qty
ESWDP1	13 ¹ / ₈ " (335mm)	1" (25mm)	6
ESWDP15	18 ¹ / ₂ " (470mm)	1 ¹ / ₂ " (38mm)	6
ESWDP2	24" (610mm)	2" (50mm)	4
ESWDP3	27 ¹ / ₈ " (695mm)	3" (75mm)	1

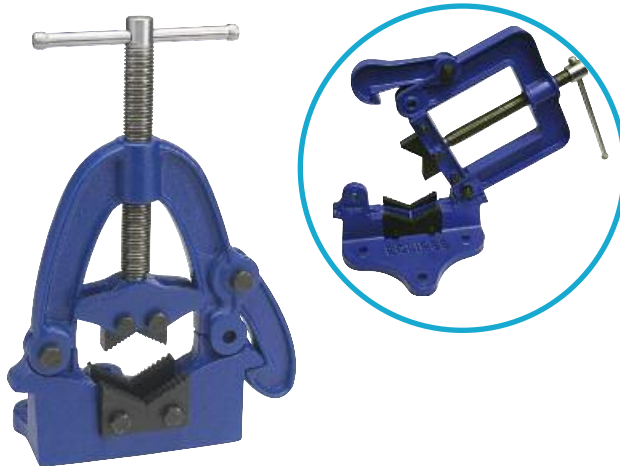
Chain Pipe Wrenches



An adjustable pipe wrench that turns a pipe in either direction. Ideal for use on round, square, or irregular shapes in confined spaces, eg when a pipe is in a trench or against a wall. Drop forged steel jaws are both hardened and tempered for maximum strength. The tensile steel chain loops quickly around the pipe and, once locked, holds it in place to prevent slippage. Only the teeth on the face of the handle bite into the pipe, meaning that, when these become worn, the jaws can be reversed to double the life of the tool. Drop forged steel cylindrical handle.

Part No	Size	Capacity	Chain Length	Pack Qty
ECPW2-1/2	2 ¹ / ₂ " (75mm)	5/16" - 2.5" (7-75mm)	19" (475mm)	6
ECPW4	4" (100mm)	1/2" - 4" (12-100mm)	29 ¹ / ₂ " (730mm)	6
ECPW8	8" (200mm)	1" - 8" (25-200mm)	40 ¹ / ₂ " (1015mm)	4
ECPW12	12" (300mm)	2" - 12" (50-300mm)	53 ¹ / ₈ " (1340mm)	1

Hinged Pipe Vices



Ideal for repetitive clamping tasks on pipework. Can be fitted to a bench or a stand. The hinged top section allows rapid access to the job, whilst the self locking frame is reversible for right or left-handed operation. The steel tommy bar and mainscrew exert and maintain a powerful gripping force and the SG ductile iron frame is guaranteed unbreakable.

Part No	Size	Pipe Capacity	Pack Qty
EHPV2	3/8" - 2" (10-50mm)	5/16" - 2.5" (7-75mm)	4
EHPV2-1/2	3/8" - 2 ¹ / ₂ " (10-60mm)	1/2" - 4" (12-100mm)	4
EHPV3-1/2	3/8" - 3 ¹ / ₂ " (10-90mm)	1" - 8" (25-200mm)	2
EHPV6	5/8" - 6" (16-150mm)	2" - 12" (50-300mm)	1

PIPE CUTTERS & HAND BENDER

Copper Pipe Slicers



For cutting copper tubing. Single handed operation – ideal for use in confined areas, for example where there is limited space between the wall and copper pipes. Two sizes available for use with 15mm and 22mm copper tube. Spare cutting wheels also available

Part No	Cutting Capacity	Box Qty
ECPS15	$\frac{1}{8}$ " (15mm)	5
ECPS22	$\frac{1}{4}$ " (22mm)	5
ECPS15-SW (Spare Wheel)	$\frac{1}{8}$ " (15mm)	5
ECPS22-SW (Spare Wheel)	$\frac{1}{4}$ " (22mm)	5

Mini Tube Cutter



For cutting 3-22mm ($\frac{1}{8}$ " to $\frac{7}{8}$ " o.d.) copper and aluminium tubing. Specifically suited to small bore tubing. The compact size makes the mini tube cutter ideal for use in confined spaces. Quickly adjusts to the required cutting position. Spare cutting wheel also available

Part No	Cutting Capacity	Box Qty
ECTC22	$\frac{1}{8}$ " - $\frac{7}{8}$ " (3-22mm)	5
EPPC22-SW (Spare Blades)	$\frac{1}{8}$ " - $\frac{7}{8}$ " (3-22mm)	(pkt 2) 5

Telescopic Tube Cutters



For cutting copper, brass, aluminium and light gauge steel tube. Makes clean, fast cuts, leaving little flash to clear away. The feed screw does not expand during use, so telescopic tube cutters are ideal for use in confined spaces. Each cutter includes an integral deburrer and a spare cutting wheel. Spare cutting wheels also available separately

Part No	Cutting Capacity	Box Qty
ECTC32	$\frac{1}{8}$ " - $1\frac{1}{2}$ " (3-32mm)	5
ECTC50	$\frac{1}{4}$ " - 2" (5-50mm)	5
ECTC32-SW (Spare Wheels)	$\frac{1}{8}$ " - $1\frac{1}{2}$ " (3-32mm)	(2pk) 5
ECTC50-SW (Spare Wheels)	$\frac{1}{4}$ " - 2" (5-50mm)	(2pk) 5

Plastic Pipe Cutters



For cutting PVC, polythene, MDP and polyethylene pipe, HEP 20, plastic overflow pipe and rubber hoses etc. High quality stainless steel blades ensure clean cuts without distortion to the plastic tubing. Ratchet system ensures a fast, efficient cut. Two sizes available; 32mm and 42mm. Spare blades also available

Part No	Cutting Capacity	Box Qty
EPPC32	$1\frac{1}{2}$ " (32mm)	5
EPPC42	$1\frac{1}{8}$ " (42mm)	5
EPPC32-SW (Spare Blade)	$1\frac{1}{2}$ " (32mm)	5
EPPC42-SW (Spare Blade)	$1\frac{1}{8}$ " (42mm)	5

Roller Pipe Cutter



For cutting steel and cast iron pipe. Frame made from unbreakable SG Ductile iron. The two rollers keep the cutter squarely on track whilst also rolling down burr to leave a clean cut. Includes a hardened steel cutting wheel and a steel mainscrew that applies a firm pressure, creating a clean cut. The safety stop prevents the cutting wheel from being damaged by the rollers

Part No	Cutting Capacity	Box Qty
ERP2	$\frac{1}{8}$ " - 2" (3-50mm)	5

Hand Bender & Accessories



Guide

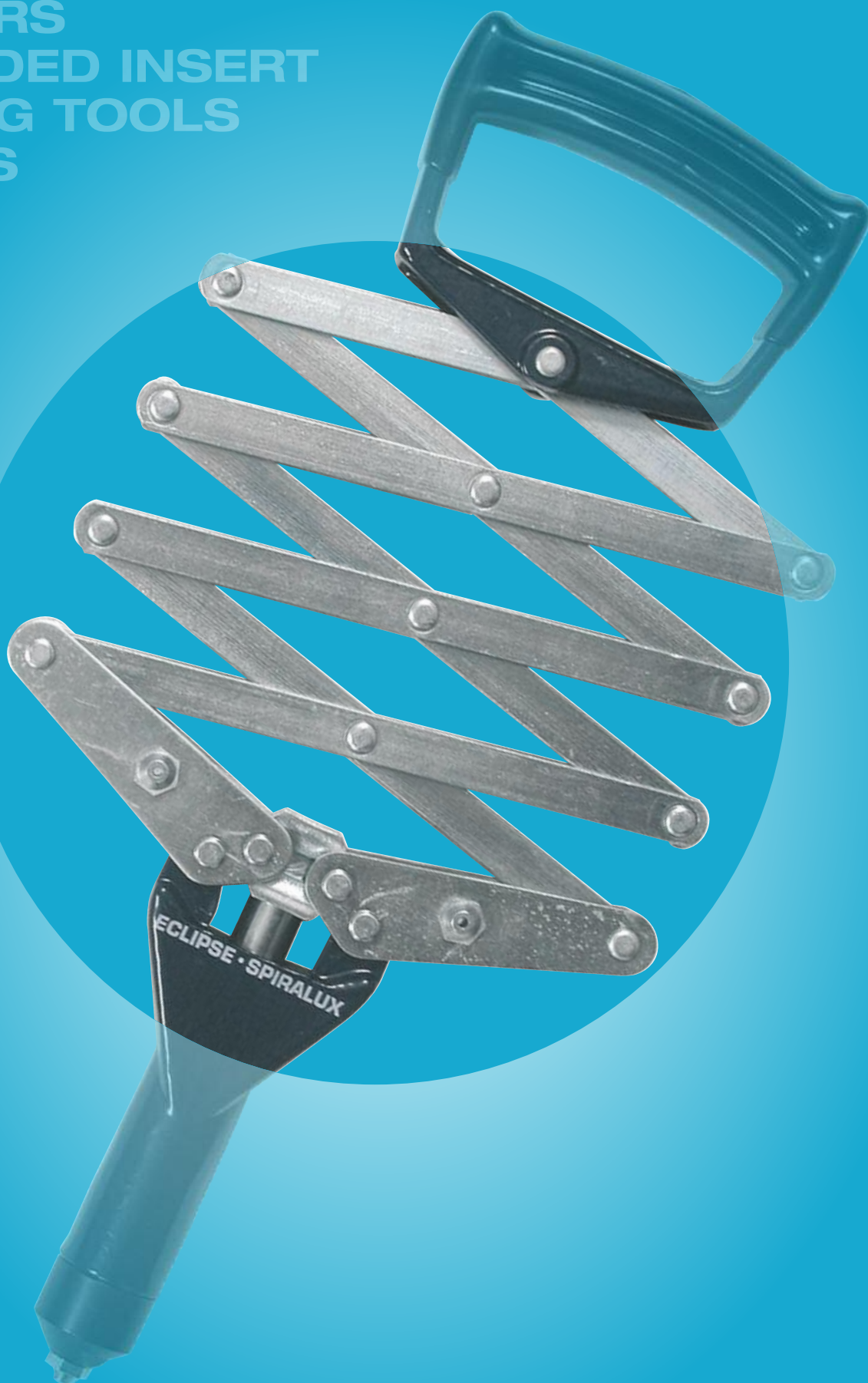


Former

A compact tool for bending 15mm and 22mm o.d. copper tube. Ideal for installing small heating systems. Supplied with 15mm and 22mm formers and guides

Part No	Pipe Capacity	Box Qty
EHB1522	$\frac{1}{8}$ " - $\frac{7}{8}$ " (15mm - 22mm)	5
EBHG15	15mm Guide	1
EBHG22	22mm Guide	1
EBHF15	15mm Former	1
EBHF22	22mm Former	1

**RIVETERS
THREADED INSERT
SETTING TOOLS
SPARES
KITS
RIVETS**



RIVETERS

Lazy Tong - 2750

Part No	Description	For use with Rivet Sizes	Pack Qty
2750	Lazy Tong	3mm (1/8") 4mm (5/16") 5mm (3/8")	1



This powerful and versatile tool has the advantage of being operated with one hand, providing no loss in efficiency. Useful on vehicle maintenance, agricultural projects and construction

Heavy Duty Lazy Tong - 2750HD

Part No	Description	For use with Rivet Sizes	Pack Qty
2760	Heavy Duty Lazy Tong	3mm (1/8") 4mm (5/16") 5mm (3/8") 6mm (1/2")	1



A fixed head riveter ideal for use with stainless steel rivets up to 6.4mm. This powerful and versatile tool has the advantage of being operated with one hand, providing no loss in efficiency. Useful on vehicle maintenance, agricultural projects and construction.

Available May 2011

Long Arm - 2760

Part No	Description	For use with Rivet Sizes	Pack Qty
2760	Long Arm	4mm (5/16") 5mm (3/8") 6mm (1/2")	1



The long arms reduce to the minimum the effort required to set rivets up to 6mm. Probably the most powerful industrial hand riveter available today. Ideal for boat building and coachwork, agricultural machine maintenance, etc. Supplied with 4 interchangeable noses

Heavy Duty Long Nose - 2720

Part No	Description	For use with Rivet Sizes	Pack Qty
2720	Heavy Duty Long Nose	3mm (1/8") 4mm (5/16") 5mm (3/8")	1



A versatile variation of the 2730, with extra long nose to facilitate access in recessed situations such as corrugated sheet. Supplied with 4 interchangeable noses

Heavy Duty - 2730

Part No	Description	For use with Rivet Sizes	Pack Qty
2730	Heavy Duty	3mm (1/8") 4mm (5/16") 5mm (3/8")	1



The market leading professional heavy duty riveter, best suited to engineering and maintenance projects. Supplied with 3 interchangeable noses

Easy Grip - 2770

Part No	Description	For use with Rivet Sizes	Pack Qty
2770	Easy Grip	3mm (1/8") 4mm (5/16") 5mm (3/8")	1



Easy one-handed operation. Well suited to light engineering use, especially for the home and workshop, providing a professional finish

General Purpose Riveter - 2800

Part No	Description	For use with Rivet Sizes	Pack Qty
2800	General Purpose	2mm (1/16") 3mm (1/8") 4mm (5/16") 5mm (3/8")	1



General purpose riveter, equipped with 4 interchangeable noses, also features automatic ejection of mandrel, slip guarded comfort handles and an internally stored spanner for changing nose bushes

Easy Grip Kit - 2772

Part No	Description
2800	The 2770 riveter is supplied with a selection of 3mm, 4mm and 5mm aluminium rivets. Packed in attractive hanging box, offering good product visibility



Heavy Duty Kit - 2735

Part No	Description
2735	A carefully conceived engineering riveter kit, comprising robust hinged plastic box and 200 assorted 3, 4 and 5mm aluminium rivets and 2730 heavy duty riveter



THREADED INSERT SETTING TOOLS & KITS



Threaded Insert Setting Tool

Part No. Description

- 1 2743** This thin sheet setting tool has been designed to enable threaded nut inserts to be set easily by hand. Invaluable to maintenance engineers for on-the-spot repairs. Supplied in storage wallet complete with 4mm, 5mm, 6mm and 8mm nose bushes and mandrels

Threaded Insert Nose Bush / Mandrel Conversion Kit

Part No.	Size	Qty	Part No.	Size	Qty
72CK211	6 UNC	10	72CK224	1/4 UNF	10
72CK212	8 UNC	10	72CK231	3mm	10
72CK213L	10 UNC	10	72CK232L	4mm	10
72CK214L	1 1/4 UNC	10	72CK233L	5mm	10
			72CK234	6mm	10
			72CK235	8mm	10

Inserts

Part No.	Size	Qty	Part No.	Size	Qty
724504	4mm	100	724505	5mm	100
724506	6mm	100	724508	8mm	100

Threaded Insert Setting Tool Kit

Part No. Description

- 2 2745** As the 2743 but supplied with additional 4mm, 5mm, 6mm and 8mm threaded nutserts. Housed in a compact tool box for easy storage

- Designed for the quick, manual insertion of permanent load bearing threads in materials from 0.20" to 0.128"
- Simple set up and easy uniform stroke allows a nutsert to be set in thin sheet materials without causing surface damage
- A comprehensive range of conversion kits and inserts are available

Product Benefits

- One side application
- Flush mounting
- Permanent thread
- Moisture resistant
- Cost effective
- Strong
- Rapid
- Vibration resistant
- Portable

TSN® GRIP RANGE

SIZE	MINIMUM	MAXIMUM
4mm	0.51mm (0.020")	1.27mm (0.050")
5mm	0.51mm (0.020")	1.27mm (0.050")
6mm	0.76mm (0.030")	1.68mm (0.066")
8mm	0.91mm (0.036")	3.25mm (0.128")

All TSN® are BS, ISO metric screw threads in the coarse pitch series. TSN® (thin sheet nutsert) is the registered trademark of AVDEL LTD.

RIVETER KITS/SPARES/RIVETS/DEBURRING TOOLS

Rivets

SHORT

Rivet Dia	Part No	Maximum Grip	Overall Length to Collar
3mm	A23S	2mm	6mm
4mm	A24S	2mm	6mm
5mm	A25S	3mm	7mm

MEDIUM

Rivet Dia	Part No	Maximum Grip	Overall Length to Collar
3mm	A23M	3.5mm	8mm
4mm	A24M	5mm	8mm
5mm	A25M	7mm	10mm

LONG

Rivet Dia	Part No	Maximum Grip	Overall Length to Collar
3mm	A23L	7.5mm	11mm
4mm	A24L	9mm	14mm
5mm	A25L	11mm	16mm

Washers

Part No	Description	Unit of Pack
S23W	Washers Blister 100 x 3mm ($\frac{1}{8}$ "	10
S24W	Washers Blister 100 x 4mm ($\frac{5}{32}$ "	10
S25W	Washers Blister 100 x 5mm ($\frac{3}{16}$ "	10

Spare Nose Kits

Part No	Description	For use with rivet sizes
1 02738A	Kit 1-5x72HD12A	3mm($\frac{1}{8}$ "
2 02738B	Kit 2-5x72HD13A	4mm($\frac{5}{32}$ "
3 02738C	Kit 3-5x72HD14	5mm($\frac{3}{16}$ "
for use with 2760		
02768A	Kit 4-1 each 72LA12 72LA13A (for aluminium) 72LA13S (for steel) 72LA14	4mm($\frac{5}{32}$ " 5mm($\frac{3}{16}$ " 5mm($\frac{3}{16}$ " 6mm($\frac{1}{4}$ "



Deburring Tool

Part No Description

- 1 9350 A multifunctional tool capable of holding a range of different blades, coarse to fine, for external and internal deburring operations. Easy to operate chuck allows for quick blade changeover.



Deburring Tool Blades

Part No Description

- 2 DB1 Heavy Duty HSS blade for steel and aluminium
3 DB2 Heavy Duty HSS blade for brass and cast iron. Capable of right and left hand cuts

All blades are ground from quality high speed steel, heat treated for maximum tool life and designed for safety with unique rounded heads

Spare Jaw Kits

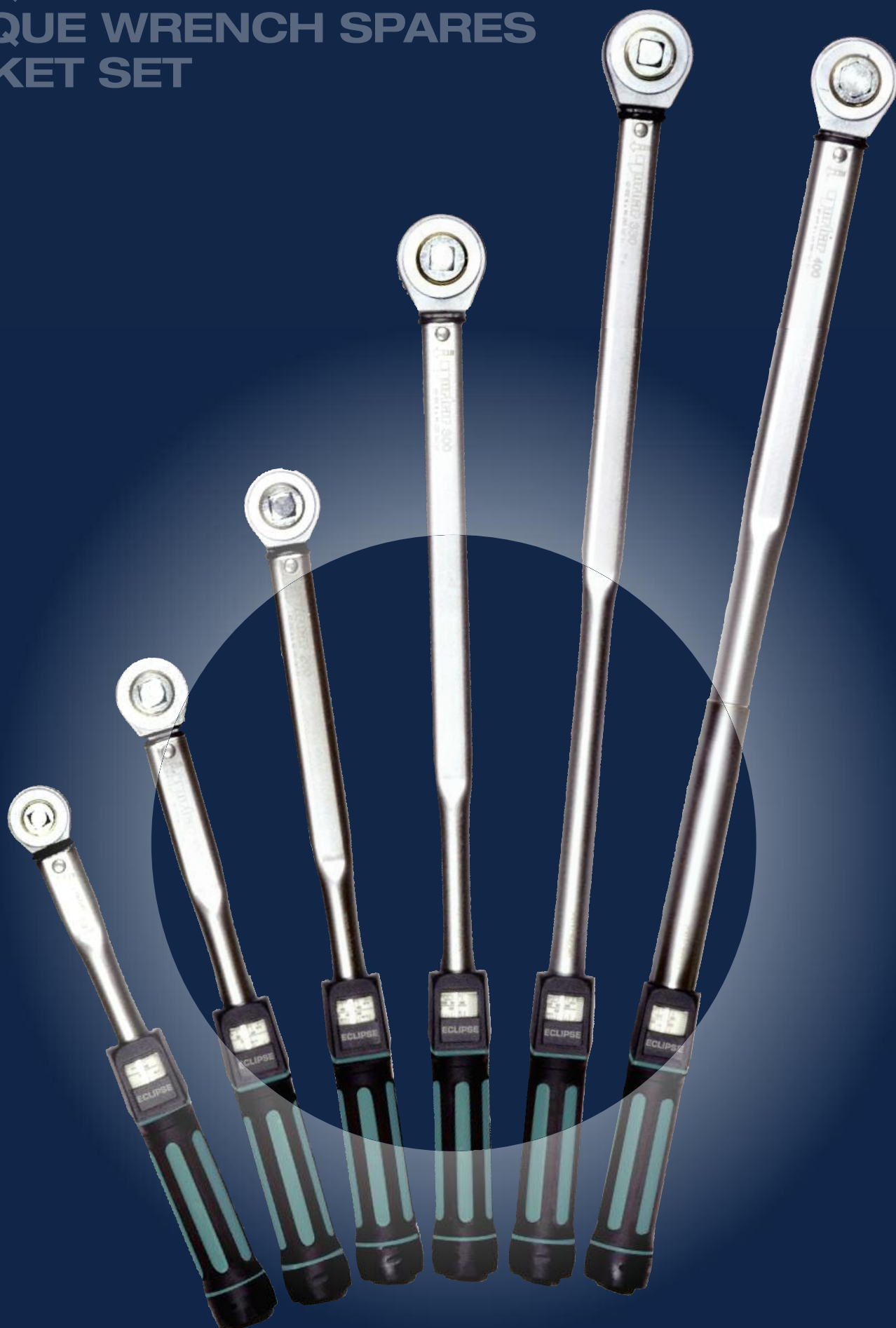
Part No	Description
2738	Pack of 5 jaws to suit models: 2720, 2730, 2750, 2770 Part No. 72HD5A
02768	Pack of 5 jaws to suit models: 2760 Part No. 72LA5

Spares list and drawings are also available for threaded insert setting tool 2743/2745.

Riveter Repair Kits

Part No	Description	Part No	Description
02729	Repair kit for 2720	02759	Repair kit for 2750
02739	Repair kit for 2730/2770	02769	Repair kit for 2760

TORQUE WRENCHES TORQUE WRENCH SPARES SOCKET SET



ECLIPSE TORQUE TOOLS

Eclipse torque wrenches are manufactured in the UK and incorporate the very latest design, manufacturing and quality control technology to achieve the highest level of innovation and precision in the field of torque control equipment.

GLOBAL SERVICE

Neill Tools are pleased to advise the availability of tool re-calibration services to the original factory standard at five locations on five continents. The accredited laboratories are situated in the UK, Australia, USA, Singapore and China, and use the same equipment and procedures as the factory (which has UKAS accreditation). Please contact sales@neill-tools.co.uk for full details of the repair and re-calibration services available.

THE OFFICIAL MARK OF QUALITY



Eclipse torque wrenches conform to the most stringent quality standards set by UKAS (the UK Government body who set the laboratory standards for calibration services). The factory manufactures according to BSEN ISO/IEC 17025:2000 which sets the standard for the technical competence of the original testing laboratory. This should not be confused with laboratories claiming ISO 9000:2000, as this standard relates only to a laboratory's quality management systems. We guarantee all our tools and products against defective workmanship and materials so you can be sure of first class quality every time.

ECLIPSE TORQUE WRENCHES: TRACEABLE CALIBRATION

A Certificate of Calibration is generated on the production line during calibration for each torque wrench and is individually packed with each product.

Certificate Key

1. Torque wrench model
2. Torque wrench individual serial number
3. Torque settings to which the wrench is calibrated
4. Upper and lower tolerance
5. The actual torque readings achieved by the wrench
6. The standard against which the wrench is being tested
7. Details of the test equipment and calibration certificate number. This information provides the traceability to our UKAS laboratory and hence to national standards



ECLIPSE PROFESSIONAL ENGINEERING TOOLS		Neill Tools Ltd <small>Atlas Way, Atlas North, Sheffield S4 7QQ England Tel: +44 (0)114 261 4242 Fax: +44 (0)114 261 4252 sales@neill-tools.co.uk www.spear-and-jackson.com </small>	
1. Certificate of Calibration			
Model: ESLI 3/8"			
Serial No: 2010/205474			
Maximum Capacity: 54.0		Units: N.m.	
Inspector: np		Ambient Temperature: 20°C	
Set Torque	Min	Max	Actual Readings
10.0	9.62	10.42	9.94 9.92 9.93 9.92
30.0	28.85	31.25	29.63 29.62 29.61 29.58
54.0	51.92	56.25	54.66 54.64 54.60 54.51
The limits shown and the test equipment used for this calibration comply with the requirements of ISO 6789 : 2003			
The uncertainty of the test equipment at 20° is < ±1% k = 2 .			
The test equipment used in the performance of the above calibration has international traceability through the following calibration laboratory which is UKAS accredited to ISO 17025:2005			
UKAS Laboratory No: 0256		Date of Calibration 8 Jan 2010	
Tester Model: 5002B, Dedicated Transducer System		Quality Director T Kelly	
Serial No: 28635			
Cert No: 124987			

TORQUE WRENCHES

Torque Mechanism

Accuracy of +/- 3% exceeds all international standards for torque wrenches. Each wrench is supplied with a traceable calibration certificate

Ratchet

- **Strength & Durability:** push-through ratchet with 60-72 engagements per revolution (depending on the model)
- **Versatility:** push through square drive allows the wrench to be used for torque control in both a clockwise and an anti-clockwise direction (note: ETW14-20 and ETW38-50 have bi-directional ratchet heads so do not have this feature)

Handle

- **Comfort & Safety:** two component ergonomic handle for maximum comfort and slip resistance
- **Durability:** Handle material and lens resist chemicals in common usage in the automotive, aviation and industrial environments

Reversible Ratchet

- **Versatility:** the tough ratchets are reversible with a narrow engagement angle of 6° to allow easy positioning of the tool in the tight confines of today's vehicles and machines

Micrometer Scale

Versatility & Accuracy: micrometer scale gives simple and error free setting (On dual scale wrenches, the micrometer increment applies to the N.m scale)

Adjustment Mechanism

Safety: a robust lock prevents accidental adjustment of the wrench during use.

Speed and Ease of Use: quick and light adjustment with the minimal of effort over the entire scale in approximately ten complete turns.

Torque Wrenches

Part No.	Square Drive Inch	Range N.m	Range lbf.ft	Resolution N.m	Ratchet Diameter mm	Engagements per Revolution	Length mm	Weight kg
ETW14-20	1/4"	1-20	10-180*	0.05	30	72	230	0.4
ETW38-50	3/8"	8-50	6-35	0.10	30	72	278	0.4
ETW38-100	3/8"	20-100	15-75	0.50	38	60	405	1.0
ETW12-100	1/2"	20-100	15-75	0.50	38	60	405	1.0
ETW12-150	1/2"	30-150	20-110	0.50	38	60	455	1.1
ETW12-200	1/2"	40-200	30-150	1.00	46	60	505	1.2
ETW12-250	1/2"	50-250	40-185	1.00	46	60	560	1.4
ETW12-300	1/2"	60-300	45-220	1.00	46	60	610	1.6

*lbf.in



PROFESSIONAL TORQUE WRENCHES

Adjustment Lock

- **Safety:** a robust lock prevents accidental adjustment of the wrench during use.
- **Ease of use:** Fingertip light adjustment



- **Strength & Durability:** push-through ratchet with 60-72 engagements per revolution (depending on the model)
- **Versatility:** push through square drive allows the wrench to be used for torque control in both a clockwise and an anti-clockwise direction
- **Accuracy:** offset ratchet pawls give a narrow engagement angle

Ratchet Head

Torque Scale

- **Versatility & Accuracy:** Unique 'harmonic drive' scale mechanism allows for a long scale length and therefore accurate and error free setting

Handle

- **Comfort & Safety:** two component ergonomic handle for maximum comfort and slip resistance
- **Durability:** Handle material and lens resist chemicals in common usage in the automotive, aviation and industrial environments

Torque Mechanism

- **Accuracy:** less parts to maintain when compared to 'pivot block' mechanisms
- **Accuracy:** +/-3% exceeds all international standards for torque wrenches. Each wrench is supplied with a traceable calibration certificate
- **Ease of use:** Simple calibration adjustments without disassembly



Professional Torque Wrenches

Part No.	Square Drive Inch	Range N.m	Range lbf.ft	Ratchet Diameter mm	Engagements per Revolution	Length mm	Weight kg
EPTW38-60	3/8"	8-60	5-45	35	72	312	0.66
EPTW12-60	1/2"	8-60	5-45	40	72	320	0.74
EPTW38-100	3/8"	20-100	15-80	35	72	353	0.73
EPTW12-100	1/2"	20-100	15-80	40	72	359	0.80
EPTW12-200	1/2"	40-200	30-150	42	72	442	1.01
EPTW12-300	1/2"	60-300	45-220	49	60	570	1.38
EPTW12-330	1/2"	60-330	45-250	49	60	683	1.50
EPTW34-400*	3/4"	80-400	60-300	49	60	683	2.09

* The square drive on this product is reversible but does not have the push through feature

INDUSTRIAL TORQUE WRENCHES

- **Accuracy:** +/-4%, even in arduous working conditions. Each wrench is supplied with a traceable calibration certificate
- **Accuracy:** large break angle improves accuracy by reducing the possibility of over torquing
- **Safety:** cam control of the mechanism gives a controlled break which will not throw the operator off balance
- **Versatility:** dual scaled - N.m and lbf.ft



Industrial Torque Wrenches

Part No.	Square Drive Inch	Range N.m	Range lbf.ft	Ratchet Diameter mm	Engagements per Revolution	Length mm	Weight kg
EITW-500	3/4"	100-500	70-350	70	36	910	5.2
EITW-1000	3/4"	300-1000	200-750	70	36	1475	7.3
EITW-1500	3/4"	700-1500	500-1000	70	36	1475	10.4

AUTOMOTIVE TORQUE WRENCHES

- **Versatility:** The bi-directional ratchet is designed with compact dimensions and a narrow engagement angle resulting from the 72 tooth pattern. This makes the wrench ideal for use in the confined spaces of modern motor vehicles and other applications where space is limited
- **Accuracy:** of +/- 3% exceeds all international standards for torque wrenches. Each wrench is supplied with a traceable calibration certificate
- **Comfort & Safety:** two component ergonomic handle for maximum comfort and slip resistance
- **Durability:** Handle material and lens resist chemicals in common usage in the automotive, aviation and industrial environments
- **Safety:** a robust lock prevents accidental adjustment of the wrench during use



Automotive Torque Wrenches

Part No.	Square Drive Inch	Range N.m	Range lbf.ft	Ratchet Diameter mm	Engagements per Revolution	Length mm	Weight kg
EATW38-60	3/8"	8-60	5-45	31	72	307	0.6
EATW12-60	1/2"	8-60	5-45	31	72	307	0.6
EATW38-100	3/8"	20-100	15-80	31	72	347	0.7
EATW12-100	1/2"	20-100	15-80	31	72	347	0.7
EATW12-200	1/2"	40-200	30-150	41	72	443	1.0

PROFESSIONAL TORQUE HANDLES (FEMALE FITTING)

- For many applications a spanner end fitting rather than a socket is the best or, often, the only solution. Typically this will be because the joint is a pipe union (such as a brake pipe)
- 9x12mm and 14 x 18mm rectangular type handles



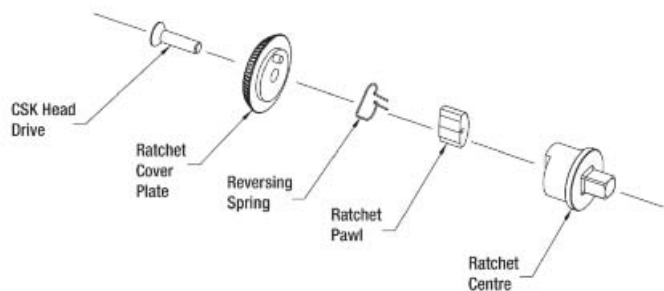
Automotive Torque Wrenches

Part No.	Square Drive Inch	Range N.m	Range lbf.ft	Length mm	Weight kg
EFTH-60	9x12	8-60	5-45	300	0.55
EFTH-100	9x12	20-100	15-80	340	0.6
EFTH12-200	9x12	40-200	30-150	421	0.78
EFTH18-200	14x18	40-200	30-150	431	0.78
EFTH-300	14x18	60-300	45-220	546.5	1.13
EFTH-400	14x18	80-400	60-300	658	1.78

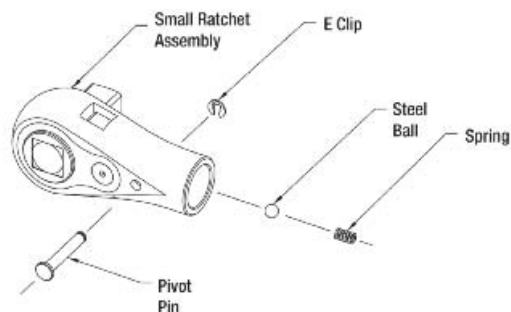


RATCHET REPAIR KITS

Eclipse Range

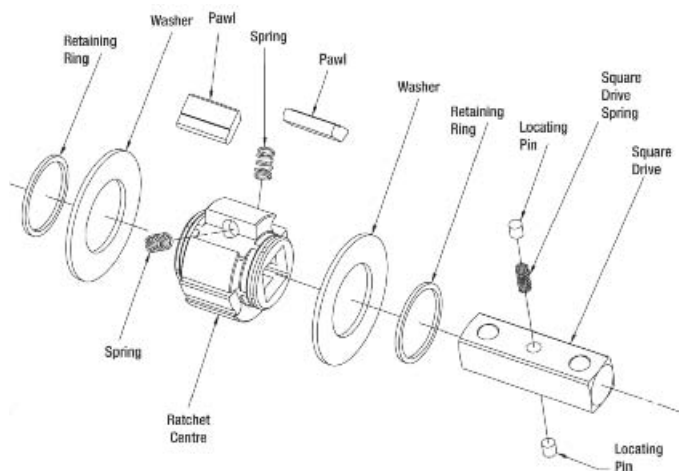


Part No.	For Torque Wrenches	Box Qty
E13425	ETW14-20	1
E13426	ETW38-50	1



Part No.	For Torque Wrenches	Box Qty
E13427	ETW38-100	1
E13409	ETW12-100 / ETW12-150	1
E13408	ETW12-200 / ETW12-250 / ETW12-300	1

Eclipse Professional Range



Part No.	For Torque Wrenches	Box Qty
E13212	EPTW38-60 / EPTW38-100	1
E13213	EPTW12-60 / EPTW12-100	1
E13214	EPTW12-200	1
E13215	EPTW12-300 / EPTW12-330	1
E13216	EPTW34-400	1

Eclipse Automotive Professional Range

Assembled Ratchet Head

Part No.	For Torque Wrenches	Box Qty
E11598	EATW38-60 / EATW38-100	1
E11618	EATW12-60 / ETW12-100	1
E11622	EATW12-200	1

Eclipse Industrial Range

Ratchet Repair Kit

Part No.	For Torque Wrenches	Box Qty
E12307	EITW-500 / EITW-800 / EITW-1000 / EITW-1500	1

Kit contains

Description	Qty
Ratchet Centre	1
Side Washers	2
Circlips	2
Pawls	4
Springs	4

SOCKET SETS

11 Piece Socket Set

Part No.	Box Qty		
EC-SS11M1/2U	1		
Contains			
Sockets	Qty	Sockets	Qty
10mm	1	15mm	1
11mm	1	17mm	1
12mm	1	19mm	1
13mm	1	21mm	1
14mm	1	22mm	1
Plus			Qty
Ratchet			1



24 Piece Socket Set

Part No.	Box Qty				
EC-SS24M1/2U	1				
Contains					
Sockets	Qty	Sockets	Qty		
10mm	1	21mm	1	Plus	Qty
11mm	1	22mm	1	Sliding T Bar 250mm	1
12mm	1	23mm	1	Universal Joint	1
13mm	1	24mm	1	Speed Handle 395mm	1
14mm	1	27mm	1	Extension Bar 125mm	1
15mm	1	30mm	1	Extension Bar 250mm	1
17mm	1	32mm	1	Reversible 72 tooth Ratchet Handle	1
19mm	1				

**HAND TOOLS
MACHINE TOOLS
WOODWORKING TOOLS**



PUNCHES



Centre Punches

Used to indent, mark, scribe lines and to make indentations in workpieces prior to drilling. Punch point accurately ground to an angle of 90°

Part No	Point Diameter	Length	Pack Size
351A	3.2mm ($\frac{1}{8}$ "	100mm (4")	10
351B	4mm ($\frac{3}{16}$ "	100mm (4")	10
351C	4.8mm ($\frac{3}{8}$ "	100mm (4")	10
351D	6.35mm ($\frac{1}{4}$ "	100mm (4")	10
351W	Wallet containing one of each		1 set
Carded retail products			
65-600R	3.2mm ($\frac{1}{8}$ "	100mm (4")	5

Parallel Punches

Used to punch out pins and dowels

Part No	Point Diameter	Length	Pack Size
161AA	1.7mm ($\frac{1}{16}$ "	100mm (4")	10
161A†	2.3mm ($\frac{1}{8}$ "	100mm (4")	10
161B†	3.1mm ($\frac{1}{4}$ "	100mm (4")	10
161CC	3.9mm ($\frac{3}{16}$ "	100mm (4")	10
161C†	4.7mm ($\frac{7}{16}$ "	100mm (4")	10
161DD	5.3mm ($\frac{1}{2}$ "	100mm (4")	10
161D	6.1mm ($\frac{1}{4}$ "	100mm (4")	10
161E	7.6mm ($\frac{3}{4}$ "	150mm (6")	5
161FF	9.5mm ($\frac{3}{4}$ "	150mm (6")	5
161W	Wallet containing one of each	1 set	

† also available in bulk packs of 200 (161ABP, 161BBP, 161CBP)

Nail Punches

Designed to drive nail heads below the surface of wood. Cupped and bevelled points limit skidding off nail head

Part No	Point Diameter	Length	Pack Size
352A	1.6mm ($\frac{1}{16}$ "	100mm (4")	10
352B	2.4mm ($\frac{1}{8}$ "	100mm (4")	10
352C	3.2mm ($\frac{1}{4}$ "	100mm (4")	10
352D	4mm ($\frac{1}{2}$ "	100mm (4")	10
352W	Wallet containing one of each	1 set	

Carded retail products

65-232R Nail punch	1.6mm ($\frac{1}{16}$ "	100mm (4")	5
65-332R Nail punch	2.4mm ($\frac{1}{8}$ "	100mm (4")	5
65-432R Nail punch	3.2mm ($\frac{1}{4}$ "	100mm (4")	5
65-532R Nail punch	4mm ($\frac{1}{2}$ "	100mm (4")	5

Auto Centre Punches

Delivers a punch when hand pressure applied to knurled head. One handed operation, hammer should not be used. Depth of impression adjusted by turning knurled head

Part No	Length mm	Operating Pressure Range kg	Operating Pressure Range lb	Pack Size
65-171R	120mm (4 $\frac{3}{4}$ "	13.5-2.25	30-5	10
E172	149mm (5 $\frac{7}{8}$ "	22.5-6.3	50-14	1

Nail & Pin Drivers

Two quality drivers for pushing home nails and pins when using a hammer would be hazardous or cause damage. Magnetic head holds nail in place, and spring return allows automatic thrusting of nail below material surface. Pistol grip handle for extra secure grip. 2.5mm: for pushing home panel pins and nails up to 2.5mm diameter. 4mm: for nails up to 4mm diameter.

Part No	Head Type	Diameter	Pack Size
9180	Pin driver	2.5mm ($\frac{1}{8}$ "	6
9185	Nail driver	4mm ($\frac{1}{4}$ "	6

SCRAPERS, PIN VICES, CHUCKS & COLLETS



Hand scrapers are designed for the removal of high spots on machined surfaces to give a smoother surface on slideways, bearings, cast iron surface plates and precision marking out plates. All scrapers have a soft feel handle and are made from high grade tool steel suitably hardened, to maintain a very keen cutting edge

Engineers' Scrapers

Suitable for toolroom and small engineering work

Part No	Blade Length	Cutting Edge	Pack Size
1 96A	100mm (4")	Three Square	5
2 97A	140mm (5½")	Three Square	5
99A	200mm (8")	Three Square	5
3 96B	100mm (4")	Flat	5
4 97B	150mm (6")	Flat	5
99B	200mm (8")	Flat	5
96C	100mm (4")	Curved half round	5
5 97C	150mm (6")	Curved half round	5
97D	200mm (8")	Curved half round	5
96	Set of 3 comprising Nos 96A, B, and C	1 set	
97	Set of 4 comprising Nos 97A, B, C and D	1 set	

Erector Scrapers

Suitable for large jobs or heavy engineering. Manufactured from chrome vanadium steel

Part No	Overall Length	Blade Length	Cutting Edge	Pack Size
256	335mm (13¼")	210mm (8¼")	Flat	5
6 257	350mm (14")	225mm (9")	Curved	5

Pin Chuck & Replacement Collects

Used for gripping very small drills, mainly on automatic lathes, where pin chuck does not revolve

Part No	Overall Length mm/inches	Description	Pack Size
9 160	65mm (¾")	Chuck with 3 collets capacity from 0.25-2.5mm(0.01-0.1")	1
RP621HRD		Replacement Collet capacity from 0.25-0.75mm(0.01-0.03")	1
RP622MRD		Replacement Collet capacity from 0.75-1.5mm(0.03-0.06")	1
RP623FRD		Replacement Collet capacity from 1.5-2.5mm(0.06-0.10")	1

Pin Vices

Hand held tools designed for holding round materials. Hollow handle enables material greater than the overall length of the pin chuck to be used

Part No	Capacity Type	mm	inches	Overall Length	Pack Size
121	Chuck	0-1.0	0-0.04	75mm (3")	10
122	Chuck	0.75-1.5	0.03-0.062	85mm (3½")	10
123	Chuck	1.4-3.1	0.055-0.122	95mm (3¾")	10
124	Chuck	3.1-5.00	0.122-0.196	105mm (4¼")	10
8 120	Set of 1 each (121, 122, 123 and 124)			1 set	

Bearing Scrapers

Part No	Overall Length	Blade Length	Pack Size
2584	180mm (7¼")	100mm (4")	5
2586	240mm (9½")	150mm (6")	5
7 2588	290mm (11½")	200mm (8")	5
258	Set of 3 comprising 258/4, 258/6 and 258/8		1 set

NUTSPINNERS

Nut Spinner - BA

Part No			Pack Size
7800	150mm (6")	0 BA	6
7801	150mm (6")	1 BA	6
7802	150mm (6")	2 BA	6
7803	150mm (6")	3 BA	6
7804	150mm (6")	4 BA	6
7806	150mm (6")	6 BA	6



For loosening and securing nuts particularly where spanners cannot reach or are awkward to use. Trilobular handle with tapered neck for ergonomic fit. Dual material handle for comfort in use. Integral moulded finger grips around neck to allow increased torque

Nut Spinner - Metric

Part No			Pack Size
7840	150mm (6")	4mm	6
7850	150mm (6")	5mm	6
7855	150mm (6")	5.5mm	6
7860	150mm (6")	6mm	6
7870	150mm (6")	7mm	6
7880	150mm (6")	8mm	6
7810	150mm (6")	10mm	6
7830*	7mm (⅝") AF, flexible shaft, with thicker handle for improved working grip. High strength flexible spring shaft. Ideal for use with hose clips.		6



For loosening and securing nuts particularly where spanners cannot reach or are awkward to use. Trilobular handle with tapered neck for ergonomic fit. Dual material handle for comfort in use. Integral moulded finger grips around neck to allow increased torque

Nut Spinner Set - Metric

Part No		Pack Size
5490	9-piece metric nut spinner set with: handle, extension piece, 9 interchangeable blades-sizes: 4, 4.5, 5, 5.5, 6, 7, 8, 9 and 10mm in high quality tool roll.	1



For loosening and securing nuts particularly where spanners cannot reach or are awkward to use. Ergonomically designed handle. Low slip textured finish for improved grip and torque

SCRIBERS/JEWELLERS SCREWDRIVERS



Engineers' Scribes

Double ended for marking out in confined spaces, e.g. grooves

Part No	Overall Length	Description	Pack Size
1 E222	190mm (7½")	Double Ended	10

Handy Scribes

Double ended with pointed and knife-edge ends. Suitable for marking and scoring most materials including wood, metal, laminates and plastics

Part No	Overall Length	Pack Size
6 76-229R	175mm (7")	5

Pocket Scribes

Available with either hardened steel or tungsten carbide points. Reversible point prevents tearing and snagging of clothing when clipped in a pocket

Part No	Size when closed	Description	Pack Size
2 E220	89mm (3½")	With hardened steel point	10
3 E225	89mm (3½")	With tungsten carbide point	10
220/05	-	Replacement hardened steel point	10
4 225/02	-	Replacement tungsten carbide point	10

Jewellers' Screwdrivers

Designed to carry out fine, delicate work by toolmakers, jewellers, watch makers, instrument engineers and opticians. Blade sizes match all commonly used slotted screws. 110mm (4½ in) overall length when fitted with blade

Part No	mm	Blade Width	in	Pack Size
777/1		Set of six complete screwdrivers supplied in fitters case		1 set
7 777/2		Pocket set containing one screwdriver body and six interchangeable blades with widths from 0.6mm (0.025in) to 2.5mm (0.100in)		1 set

Machinists' Scriber

Designed for the machinist. For marking out in confined spaces, particularly on pre-machined workpieces

Part No	Overall Length	Description	Pack Size
5 E227	114mm (4½")	One piece single ended scriber	10

TOOL BITS/HOLDERS/BORING BARS



Tool Bits

Eclipse H5 tool bits have a 5% cobalt content to give optimum hardness, grindability and cutting performance. Square tool bits can be used in lathes and shaping machines. Round tool bits used in internal boring bars and slotting machines. Tool bits manufactured to ISO5421

H5 Square Part No.	H5 Round Part No.	Dimensions Section	Length	Pack Size
	TE70D	4.8mm ($\frac{3}{16}$ "	51mm (2")	10
	TE74B	4.8mm ($\frac{3}{16}$ "	76mm (3")	10
TD109R		6.4mm ($\frac{1}{4}$ "	76mm (3")	10
1 TD111M	TE111C	6.4mm ($\frac{1}{4}$ "	102mm (4")	10
TD147R		7.9mm ($\frac{5}{16}$ "	64mm (2½")	10
TD149M			76mm (3")	10
TD151N	TE151D	7.9mm ($\frac{5}{16}$ "	102mm (4")	10
2 TD189N	TE189J	9.5mm ($\frac{3}{8}$ "	76mm (3")	10
TD191W		9.5mm ($\frac{3}{8}$ "	102mm (4")	10
3 TD195C		9.5mm ($\frac{3}{8}$ "	153mm (6")	10
TD271F	TE271E	12.7mm ($\frac{1}{2}$ "	102mm (4")	5
TD275B		12.7mm ($\frac{1}{2}$ "	153mm (6")	5
TD311E		15.9mm ($\frac{5}{8}$ "	102mm (4")	5
TD315M		15.9mm ($\frac{5}{8}$ "	153mm (6")	5
4 TD351R		19.0mm ($\frac{3}{4}$ "	102mm (4")	5
TD355N		19.0mm ($\frac{3}{4}$ "	153mm (6")	5

Diameters quoted are approximate, actual diameters being slightly more than the nominals quoted.
We recommend that tool bits be ground under a copious flow of coolant to prevent build-up of heat.

Tool Bit Holders

Eclipse tool bit holders are designed to optimise toolbit performance. Eclipse holders clamp the tool bit securely and rigidly. Supplied complete with an Allen key and one Eclipse H5 tool bit

Part No.	Capacity mm	Capacity in	Shank Size mm	Shank Size in	Overall Length	Pack Size
524SL	5-7	$\frac{3}{16}$ - $\frac{1}{4}$	11.1 x 25.4	$\frac{7}{16}$ x 1	130mm (5½")	1
7 534SL	8-10	$\frac{5}{16}$ - $\frac{3}{8}$	15.9 x 31.8	$\frac{5}{8}$ x 1¼	155mm (6")	1
544SL	10-12.7	$\frac{3}{8}$ - $\frac{1}{2}$	22.2 x 38	$\frac{7}{8}$ x 1½	230mm (9")	1
8 523S	5-7	$\frac{3}{16}$ - $\frac{1}{4}$	14.3 x 19	$\frac{5}{16}$ x ¾	125mm (5")	1
533S	8-10	$\frac{5}{16}$ - $\frac{3}{8}$	17.5 x 25.4	1½ x 1	155mm (6")	1

Holders with the suffix 'SL' are designed for use in American type (slotted pillar) tool posts. Holders with suffix 'S' are of more robust construction and are designed for use on English type lathes with flat tool rests, or 4 way turret tool posts.

Boring Bars

Made from H5 cobalt high speed steel. Shank ground on underside to provide a flat surface for ease of setting and to ensure rigidity when used in a tool post. Ends ground ready for use

Part No	Diameter	Length	Pack Size
9 TK105B	5mm ($\frac{1}{8}$ "	114mm (4½")	10
TK146C	6.5mm ($\frac{1}{4}$ "	127mm (5")	10
TK188P	8mm ($\frac{5}{16}$ "	153mm (6")	10
10 TK230J	9.5mm ($\frac{3}{8}$ "	178mm (7")	10

STATEMENT OF CONFORMITY

Tool Bits - in general compliance with British Standard BS 1296 : 4 - Specification for single point cutting tools, ground high speed tool bits.

CUTTING OFF, LATHE TOOLS, HOLDERS



Cutting Off Tools - Bevel Section

Bevel section accurately ground with clearance angle at cutting edge

	H5 Square	Width	Top Thickness	Bottom Thickness	Length	Pack Size
1	TH325M	12.70mm ($\frac{1}{2}$ "	2.4mm ($\frac{1}{32}$ "	1.6mm ($\frac{1}{16}$ "	114mm ($4\frac{1}{2}$ "	10
2	TH466F	15.87mm ($\frac{5}{8}$ "	2.4mm ($\frac{1}{32}$ "	1.6mm ($\frac{1}{16}$ "	127mm (5")	10
3	TH628V	19.05mm ($\frac{3}{4}$ "	3.2mm ($\frac{1}{8}$ "	1.6mm ($\frac{1}{16}$ "	153mm (6")	10
4	TH750R	22.23mm ($\frac{7}{8}$ "	3.2mm ($\frac{1}{8}$ "	1.6mm ($\frac{1}{16}$ "	178mm (7")	10
5	TH912T	25.40mm (1")	4.8mm ($\frac{3}{16}$ "	3.2mm ($\frac{1}{8}$ "	203mm (8")	5

Cutting Off Tools - Hollow Ground

Hollow ground providing extra side clearance

	Part No	Capacity	Thickness	Length	Pack Size
1	TJ123V	7.93mm ($\frac{5}{16}$ "	1.6mm ($\frac{1}{16}$ "	89mm ($3\frac{1}{2}$ "	10
8	TJ445T	12.70mm ($\frac{1}{2}$ "	2.4mm ($\frac{1}{32}$ "	114mm ($4\frac{1}{2}$ "	10
	TJ465G	12.70mm ($\frac{1}{2}$ "	3.2mm ($\frac{1}{8}$ "	114mm ($4\frac{1}{2}$ "	10
	TJ766J	17.46mm ($\frac{11}{16}$ "	4.0mm ($\frac{5}{16}$ "	127mm (5")	5

Cutting Off Tool Holders

633S designed specifically for use on small lathes. The only toolholder in our range suitable for hollow ground cutting off tools. All holders include a clamp designed to ensure that the tools are held securely and rigidly

Part No.	Capacity mm	Capacity in	Shank Size mm	Shank Size in	Base to Underside	Overall Length
6 633S	8	$\frac{5}{16}$	8 x 14.2	$\frac{5}{16}$ x $\frac{5}{16}$	2.4mm ($\frac{1}{32}$ "	95mm ($3\frac{3}{8}$ "
653S	12.7-16	$\frac{1}{2}$ - $\frac{5}{8}$	12.7 x 25.4	$\frac{1}{2}$ x 1	3.2mm ($\frac{1}{8}$ "	155mm (6")
7 673S	19-22.2	$\frac{3}{4}$ - $\frac{7}{8}$	16 x 35	$\frac{3}{4}$ x $1\frac{1}{8}$	4.75mm ($\frac{3}{16}$ "	180mm (7")
693S	25.4-28.5	1 - $1\frac{1}{8}$	19 x 43	$\frac{3}{4}$ x $1\frac{7}{8}$	5.5mm ($\frac{1}{4}$ "	190mm ($7\frac{1}{2}$ "

Additional information

Part No	Part No. of Suitable Cutting-Off Tool	Pack Size
6 633S	TJ123V	1
653S	TH325M or TH466F	1
7 673S	TH628V or TH750R	1
693S	TH912T	1

Lathe Tool Sets

Each set contains six H5 tools in a plastic rack. Ends are ground ready for use and bases are ground to ensure correct seating and rigidity. Individual tools in each set are available separately

Part No	Nominal Thickness	Length	Pack Size
9 E420	6.5mm ($\frac{1}{4}$ "	90mm ($3\frac{1}{2}$ "	1 set
E430	9.5mm ($\frac{3}{8}$ "	125mm (5")	1 set
E 430 Series			
Unit of Pack			
E435 Boring	5		
E436 Internal Threading	5		

TAP WRENCHES & ACCESSORIES



Trammel Heads

Supplied as one pair of heads. Suitable for laying out the distance between two points and scribing arcs and circles. To be used in conjunction with any wood offcut between $\frac{3}{4}$ " to $1\frac{1}{2}$ " wide, minimum thickness of $\frac{3}{8}$ "

Part No	Suitable for beam sizes	Pack Size
1 33	19 x 38mm ($\frac{3}{4}$ " - $1\frac{1}{2}$ " Thick, & 38mm ($\frac{3}{4}$ " Wide	pair

Standard Bar Type Tap Wrench

Provides a comfortable and positive grip plus the sensitivity required when tapping a blind hole. Knurled locknut ensures a constant grip on the tap when in use

Part No.	Capacity mm	Square A/F ISO	BA	BSW BSF	UNC	UNF	Length mm	in	Unit of Pack
2 E240	1.5-4.6	M1-M6	14-0	$\frac{1}{8}$ - $\frac{1}{4}$	0-12	$\frac{1}{4}$	110/105	4 $\frac{1}{4}$	1
3 E241	2.0-7.2	M3-M12	5-0	$\frac{1}{8}$ - $\frac{1}{2}$	4-12	$\frac{1}{4}$ - $\frac{1}{2}$	164/156	6 $\frac{1}{2}$	1
4 E242	2.5-9.0	M4-M16	3-0	$\frac{3}{16}$ - $\frac{1}{2}$	8-12	$\frac{1}{4}$ - $\frac{1}{2}$	230/220	9	1

Chuck Type Tap Wrench

Stepped jaws greatly extend range of taps for each wrench. Adjustable tommy bar for tapping close to a shoulder or other obstructions. Available in normal and long reach designs

Part No	Body Length	Width	Pack Size
5 E141 (Fixed Bar)	50mm ($1\frac{1}{4}$ "	57mm ($2\frac{1}{4}$ "	1
E142	65mm ($2\frac{1}{2}$ "	90mm ($3\frac{1}{2}$ "	1
6 E143	90mm ($3\frac{3}{4}$ "	127mm (5")	1
E145	165mm ($6\frac{1}{2}$ "	90mm ($3\frac{1}{2}$ "	1
7 E146	245mm (10")	127mm (5")	1

Part No.	Jaw Capacities	Square A/F mm	ISO	BA	BSW BSF	UNC	UNF
5 E141	Min	1	M1	14	-	1	-
	Max	2.8	M3.5	4	$\frac{1}{8}$	6	-
E142 & E145	Min	2.0	M1	14	$\frac{1}{8}$	6	-
	Max	5.0	M6	0	$\frac{1}{4}$	12	$\frac{1}{4}$
6 E143 & 7 E146	Min	3.0	M4	3	$\frac{3}{16}$	8	$\frac{1}{4}$
	Max	8.0	M12	0	$\frac{1}{2}$	12	$\frac{1}{2}$

Tool Makers' Clamp

Manufactured from case-hardened steel, designed to ensure jaws remain in place

Part No	Jaw Capacity	Length of Jaw	Jaw Section	Pack Size
8 410	25mm (1")	50mm (2")	8.0mm ($\frac{5}{16}$ sq in)	1
411	38mm ($1\frac{1}{2}$ "	75mm (3")	11.1mm ($\frac{7}{16}$ sq in)	1
9 412	63mm ($2\frac{1}{2}$ "	100mm (4")	14.3mm ($\frac{9}{16}$ sq in)	1
413	89mm ($3\frac{1}{2}$ "	125mm (5")	17.5mm ($\frac{11}{16}$ sq in)	1

PERMANENT MAGNETS MAGNETIC TOOLS



PERMANENT MAGNETS

Cylindrical Bar Magnets

Part No	Diameter mm	Length mm	Weight per pair (kg)	Pack Qty
E805	6	20	0.02	10
E806	8	25	0.04	5
E807	10	30	0.07	5



Material: Alcomax III. Supplied in pairs. Can be used in temperatures up to 550°C

Rectangular Bar Magnets

Part No	Width mm	Height mm	Length mm	Weight per pair (kg)	Pack Qty
E844	10	5	20	0.03	5
E845	12.5	5	40	0.04	5
E846	15	5	60	0.13	5
E842	15	10	50	0.22	1
E843	15	10	75	0.33	1



Material: E844, E845, E846 - Alcomax III. E842, E843 - Alnico. Supplied in pairs. Can be used in temperatures up to 550°C. North Pole is indicated by a notch

Button Magnets

Part No	Width mm	Height mm	Slot Size Min - Max mm	Hole Size	Weight (kg)	Max Pull (kg)	Pack Qty
E821	12.5	9.5	4.0 - 7.2	4.5	0.006	0.7	10
E822	19.1	12.7	5.6 - 8.7	4.8	0.02	1.9	10
E823	25.4	15.9	5.6 - 8.7	4.8	0.05	3.4	10
E824	31.8	25.4	8.0 - 12.7	7.1	0.113	4.8	5
E825	22.2	19.1	6.4 - 6.4	4.8	0.05	3	10



Material: Alnico. Can be used in temperatures up to 550°C

Minor Magnet

Part No	Depth mm	Height mm	Width mm	Pole Gap	Weight (kg)	Max Pull (kg)	Pack Qty
E801	7.9	11.1	22.2	6.4	0.02	0.9	10



Material: Alnico. Can be used in temperatures up to 550°C

Major Magnet

Part No	Depth mm	Height mm	Width mm	Pole Area mm	Pole Gap mm	Weight (kg)	Flux density at gap centre Wb/m ² - Gauss	Pack Qty
862	50	111	103.5	22.2 x 52.4	27.3	2.9	0.210 - 2000	1



Material: Alcomax III & Mild Steel. The large gap design provides the highest practical field strength

Pocket Magnets

Part No	Length mm	Width mm	Height mm	Width of Gap	Weight (kg)	Max Pull (kg)	Pack Qty
E802	22.2	7.9	25.4	6.4	0.03	2.4	10
E803	27	15.9	35	7.9	0.09	4	5



Material: Alnico. Can be used in temperatures up to 550°C

Power Magnets

Part No	Length mm	Height mm	Width mm	Width of Gap	Hole Size	Weight (kg)	Max Pull (kg)	Pack Qty
811	30	20	20	15	5	0.06	4.5	5
812	40	25	25	20	5	0.12	9	5
813	45	30	30	23	5	0.18	11.8	1
814	58	35	40.5	27.8	2 x 7.9	0.37	23.5	1
815	70	41.3	57.2	34.1	2 x 7.9	0.71	37	1
816	79.4	54	82.6	38.5	2 x 9.5	1.45	47	1
817	60.3	40	62	31.75	N/A	0.8	35	1
818	79.4	54	85.7	47.6	N/A	1.8	60	1



Material: Alcomax. Can be used in temperatures up to 550°C

Deep Pot Magnets

Part No	Dia. mm	Height mm	Thread Size	Weight (kg)	Max Pull (kg)	Pack Qty
829	9.5	15.1	M3	0.005	1	10
830	12.7	15.9	M4	0.015	2	10
831	17.5	16	M6	0.023	2.65	10
832	20.5	19	M6	0.040	4	5
833	27	25	M6	0.085	6.1	5
834	35	30	M6	0.184	14.75	1



Material: Alcomax III (magnet), Mild Steel (body), Aluminium (spacer). Can be used in temperatures up to 220°C. 831, 832, 833, 834 - available with 10 UNF or 1/4 UNC thread on a made to order basis

Shallow Pot Magnets

Part No	Dia. mm	Height mm	Hole Size M3 (csn)	Screw Head Size	Weight (kg)	Max Pull (kg)	Pack Qty
826	19.1	7.5	3.7 - 6.7	M3 Csk	0.01	3	10
827	28.6	8.7	4.8 - 8.6	M4 Csk	0.03	5	10
828	38.1	10.35	4.8 - 8.6	M4 Csk	0.08	13	5



Material: Alcomax III (magnet), Mild Steel (body). Can be used in temperatures up to 550°C (except 826: 100°C)

PERMANENT MAGNETS

Neo-Hold Bi-Pole Magnets

Part No	Dia. mm	Height mm	Weight (kg)	Thread Size	Max Pull (kg)	Pack Qty
NH 025	12.7	11.6	0.01	M5	2	10
NH 065	16	15.6	0.018	M6	5	10
NH 130	22	20	0.04	M6	9	5
NH 240	25	25	0.07	M6	15	5



Material: Neodymium Iron Boron (magnet), Aluminium (body). Can be used in temperatures up to 100°C

Magnetic Foot

Part No	Dia. mm	Height mm	Width mm	Weight (kg)	Thread Size	Max Pull (kg)	Pack Qty
920 SOUT	60	25	25	0.32	M6	12	1



Material: Alcomax III (magnet), mild steel (pot). Rectangular block containing two pot type magnets set into one mild steel housing. Can be used in temperatures up to 220°C

Ferrite Channel Magnets

Part No	Length mm	Width mm	Height mm	Weight (kg)	Plain fixing holes	Max Pull (kg)	Pack Qty
E898/2	130	30	13	0.25	4.2	14	5
E899	190	43	13	0.50	4.2	48	2



Shallow limpet type magnets set in a mild steel shell. Can be used in temperatures up to 80°C

Ferrite Shallow Pot Magnets

Part No	Dia. mm	Height mm	Weight (kg)	Max Pull (kg)	Thread Size	Pack Qty
E890	46	10.7	0.09	6	M6	5
E891	56	10.7	0.13	16	M6	5
E892	66	10.7	0.19	25	M6	5



Especially suitable for bases for machine tool accessories. Can be used in temperatures up to 80°C. Supplied with removeable hook

Ferrite Shallow Pot Magnets - Heavy Duty

Part No	Dia mm	Height mm	Weight (kg)	Central Fixing Point	Fixing Stud centres PCD	Max Pull (kg)	Pack Qty
E895	66	10.7	0.27	M6	46mm/3 holes	25	1
E896	76	12.5	0.30	M6	46mm/3 holes	33	1
E897	100	15	0.61	M6	70mm/3 holes	55	1
E896/2*	76	12.5	0.30	22mm	46mm/3 holes	33	1
E897/2*	100	15	0.61	22mm	70mm/3 holes	55	1



Especially suitable for bases for machine tool accessories. Can be used in temperatures up to 80°C. Three M6 tapped holes with removeable jacking screw. *Supplied without hooks, the three additional holes are clearance holes

Magnetic Discs

Part No	Dia. mm	Thickness mm	Pack Qty
CM 700-R	14	5	10
CM 701-R	20	5	10
CM 702-R	30	5	10



Material: Ferrite magnet. Can be used in temperatures up to 80°C. Highly resistant to demagnetisation. The magnets have a variety of uses including: holding notes, drawings, plans etc. on steel surfaces

Marker Magnets

Available in bulk supply, minimum of 100 off. Available in white, black, red, blue, yellow and green in 15, 20, 30 and 40mm diameters.



The magnets have a variety of uses, including: holding notes, drawings, plans etc. on steel surfaces

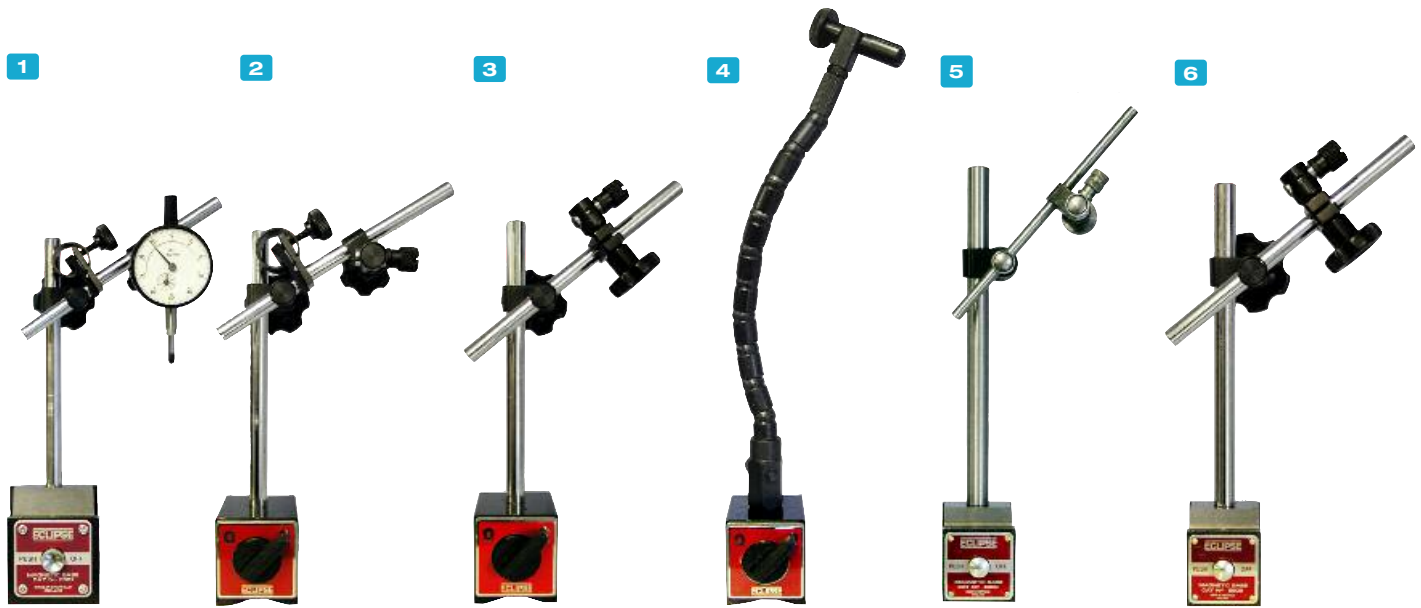
Flexible Magnets

Part No	Width mm	Thickness mm	Length (metres)	Pack Qty
Plain, Flexible Magnetic Strip				
FM 670	9.5	3.6	10	1
FM 671	11	4.6	10	1
FM 672	15	6.4	10	1
EM 880-R	9.5	3.6	2	1
Adhesive Backed Flexible Magnets				
FM 660	7.5	0.75	10	1
FM 661	12.5	0.75	10	1
FM 662	20	0.75	10	1
EM 884-R	13	0.5	1	1
EM 888-R (pairs)	9.5	3.6	150mm	10 pairs
FM 650	150sq	0.75	150mm sq.	5



Material: Strontium Ferrite. Supplied in sheet, strip and adhesive backed finishes. Flexible strip and sheets available with a coloured vinyl finish. Can be cut with scissors. Can be used in temperatures up to 80°C

MAGNETIC TOOLS

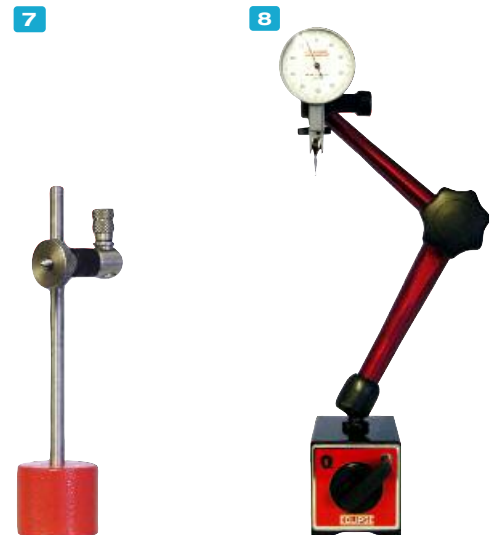


Complete Magnetic Stands

Part No	Max Pull (kg)	Base Part No	Switching Type	Fitment Part No	Fitment Type
1 E901	80	E901WF	Push Button	RP991BL	Heavy duty with fine adjustable
2 E903CP	30	E900WF	Push Button	RP72CP	Light duty
3 E908M	30	E900WF	Push Button	RP995BL	Heavy duty
4 E905	80	E905WF	Lever	RP995BL	Heavy duty
5 E906	80	E905WF	Lever	RP991BL	Heavy duty with fine adjustable
6 E907M	80	E905WF	Lever	RP907S	Flexible snake arm
7 E910	80	E905WF	Lever	RP999	Mechanical one piece
8 E909	14	834	Non-switchable	RP909FIT	One pillar

For use in the measurement, inspection and positioning of workpieces with dial indicators. To measure the flatness of a workpiece after grinding or milling. For checking concentricity of a workpiece

All stands will clamp onto curved and flat surfaces (with the exception of E909)



Magnetic Bases - Push Button

Part No	Length mm	Height mm	Width mm	Hole Size	Weight (kg)	Clamping Force (kg)
E900WF	48	50	40	M8	0.5	30
E900WF	64	76	64	M8	1.7	80

Magnetic Bases - Toggle Switch

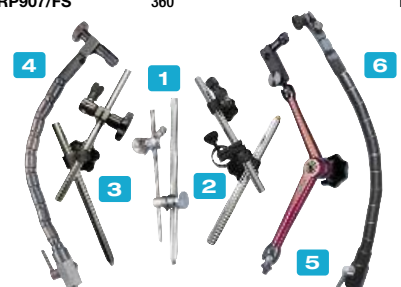
Part No	Length mm	Height mm	Width mm	Hole Size	Weight (kg)	Clamping Force (kg)
E905WF	65	55	50	M8	1.05	80
E905WF/100	75	55	50	M8	1.20	100

Magnetic Bases - Fitment Sets

Part No	Pillar Height mm	Pillar Dia. mm	Crossbar Length mm	Crossbar Dia. mm	Screw Fixing
1 RP72CP	185	12.5	150	6.3	M8
2 RP991BL	175	12	165	10	M8
3 RP995BL	175	12	165	10	M8
Part No	Max Extension Height mm				Screw Fixing
4 RP907S	315				M8
5 RP999	295				M8
6 RP907/FS	360				M8



4 magnetic faces. Eclipse magnetic bases can be readily located on any ferrous surface to provide a rigid support



For UK enquiries telephone: 0114 225 0613

MAGNETIC TOOLS

Magnetic Variable Clamp

Part No	Length mm	Height mm	Width mm	Weight (kg)	Pull (kg)
E952	195	200	11	0.49	20



Designed for fast accurate holding of ferrous sheets and tubes for welding and assembly work. Maximum operating temperature up to 120°C. Dimensions with arms set at 90°

Heavy Duty Variable Clamp

Part No	Length mm	Height mm	Width mm	Weight (kg)	Pull (kg)
E974	140	140	35	1.40	40



Provides the user with the means to clamp components during welding, fabrication and assembly applications with the added benefit of 40kg clamping force, enabling larger components to be clamped with ease

Magnetic 90° Fixed Clamps

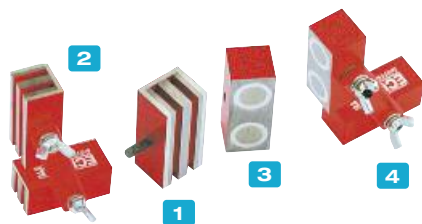
Part No	Length mm	Height mm	Width mm	Weight (kg)	Pull (kg)
1 E971	140	140	35	1.40	40
2 E972	225	225	22	2.20	75
3 E973	300	300	35	4.70	200



Two magnetic faces in a rigid 90° angle for jiggling on sheets, pipes and tubes. The Eclipse E971, E972 and E973 fixed 90° clamps provide a fast and cost effective means of clamping components rigid at 90° angles during fabrication, assembly and weld preparation applications

Magnetic Adjustable Links

Part No	Length mm	Height mm	Width mm	Weight (kg)	Pull (kg)
1 920 SU (single unit)	60	25	29	0.35	13
2 920 (pair)	127	25	51	0.70	13
3 920SUOT (single unit original type)	60	25	29	0.32	12
4 920OTPR (original type pair)	127	25	29	0.70	12



Clamping components at any angle for welding and assembly applications

Magnetic Quick Clamps

Part No	Length mm	Height mm	Width mm	Weight (kg)	Pull (kg)
E951	100.5	65	12	0.3	10
E953	100.5	65	21	0.4	15



Designed to facilitate fast and accurate holding of ferrous metals. Quick clamps are also suitable for retrieval applications

Magnetic Mitre Clamps

Part No	Length base face mm	Length top face mm	Height mm	Width mm	Weight (kg)	Pull (kg)
1 923	152	70	44.5	41	1.36	100
2 924	178	95	44.5	41	1.64	68



Effective and inexpensive method of clamping components. The Eclipse 923 and 924 Mitre Clamps provide the welder with a simple means of clamping flat or round ferrous components

Earth Welding Clamp

Part No	Thickness mm	Height mm	Width mm	Maximum Current (amps)	Weight (kg)	Pull (kg)
E945	36	130	82.5	350	1.4	50



This magnetic clamp allows quick and easy earthing for most steel welding operations. The Eclipse E945 Earth Welding clamp is designed to provide earthing on large welding operations where Croc-Clip or G-Clamps cannot be easily used

Hand Magnet

Part No	Length mm	Height mm	Width mm	Weight (kg)	Pull (kg)
E961	121	235	41	2.75	1.15



This lightweight unit contains powerful ferrite magnets and is capable of attracting small ferrous components to the base of the tool. The E961 is particularly useful for picking many small parts like nails or tacks that may have been split

Magnetic Holder

Part No	Length mm	Height mm	Width mm	Weight (kg)	Max Pull Capacity (kg)
E925	108	140	108	5.67	100



Contains powerful Alcomax magnetic material. The E925 magnetic holder provides the welder with a powerful, rigid support on flat and round components at various angles during welding and welding preparation applications. The E925 is switchable and can be partially energised

MAGNETIC TOOLS

Magnetic Holdfasts

Part No	Dia mm	Height mm	Fixing Holes PCD	No. of Holes	Weight (kg)	Max Pull (kg)
E939	44.5	44.5	31.8	2	0.6	20
E940	55.0	49.5	38.1	2	1.0	40
E941	70.0	63.5	50.8	2	2.0	88
E942	100.0	74.5	69.1	3	4.7	183



This magnetic holdfasts can be built into workholding, handling and assembly fixtures to provide a high clamping force and positive grip. Maximum operating temperature is 100°C. Contains Alcomax 3 magnetic material. Supplied with screw release handle

Magnetic Positioner

Part No	Length mm	Height mm	Width mm	Weight (kg)	Max pull on flat face (kg)	Max pull on vee'd face (kg)
922	206	63.5	76	3.17	113	104
922 SU (Single)	63.5	63.5	51	1.48	113	104



Heavy Duty unit consisting of 2 magnetic blocks connected by 2 non magnetic steel straps. The blocks contain high performance Alcomax 3 magnetic material. Magnetic on two faces. On / Off switch located at each end

Magnetic Plate Drag

Part No	Length mm	Height mm	Width mm	Weight (kg)	Pull (kg)
E964	118	98	38	2.8	50



This heavy duty plate drag contains powerful permanent ferrite magnets in an aluminium housing. The magnetic plate drag is designed for removal of steel sheets from a stack and safe transportation of sheets to and from machines, etc

Recovery Magnet

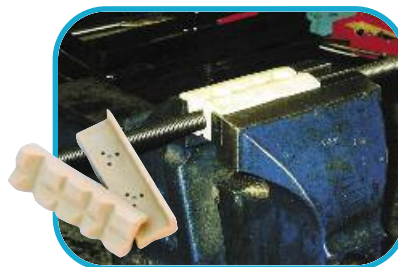
Part No	Width mm	Height mm	Thickness mm	Weight (kg)	Pull (kg)
E936	82.5	101.5	36	1.4	50



This powerful recovery magnet is constructed from a Ferrite magnet sandwiched between two steel plates. Designed for recovery or retrieval applications such as retrieving objects from coolant tanks and vats

Magnetic Vice Jaws

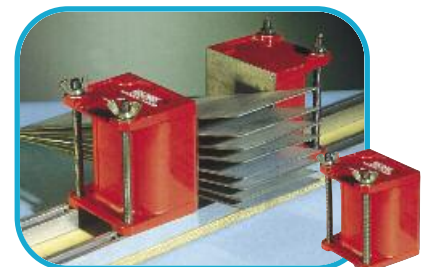
Part No	Width mm	Height mm	Length mm	Weight per pair (kg)
EM983-R	31	32	103	0.13



Supplied in pairs. The magnet material in the Vice Jaws is neodymium and the surrounding material is polyurethane. Secures round irregular workpieces without damage or distortion to any type of workpiece

Magnetic Sheet Floaters

Part No	Width mm	Height mm	Depth mm	Mounting Hole Size	Weight per pair (kg)
E913	73	76	65	M8	1.40
E914	92	102	76	M8	3.10
E915	113	152	89	M10	6.75



Supplied in pairs. These magnetic sheet floaters operate by the use of mutual magnetic repulsion to separate sheets in a stack. Can be used in conjunction with major machine tools and contributes to production efficiencies when fully integrated into the production flow

Magnetic Tool Rack

Part No	Width mm	Height mm	Length mm	Weight (kg)	Pull (kg)
EM985-R	20	45	350	0.55	1



Contains 2 x 350mm powerful magnet bars with extruded magnetic rubber lengths housed between two pole pieces. The rack will neatly and securely hold tools in the garage environment and knives on the kitchen

Telescopic Pick-up Magnet

Part No	Length mm	Weight (kg)
EM967-R	147 (retracted) 660 (extended)	0.04



Powerful Neodymium Iron Boron magnets are used to ensure maximum pull for a small magnetic area. Ideal for retrieving ferrous objects that are out of reach

Magnetic Tool Mat

Part No	Width mm	Height mm	Thickness mm	Weight (kg)	Max Pull (kg)
EM981-R	210	150	15	0.36	5



The handy magnetic tool mat consists of 3 strong Ferrite magnets encapsulated in a tough PVC casing. Widely used in production areas for keeping tools and parts within easy reach. Magnetic both sides

SDS PLUS DRILL BITS
MASONRY DRY BITS
HSS DRILL BITS



PREMIUM SDS PLUS HAMMER DRILL BITS

Fast, efficient and accurate

Flute geometry design ensures maximum amount of spoil removal. Multi-carbide tip increases penetration rate, cutting accuracy, and life. Optimum core width and flute geometry provides the perfect balance between speed and strength. Copper brazing between body and tip for ultimate strength.



CUTTING-EDGE 'FAST-FIT' BIT-CHANGE TECHNOLOGY

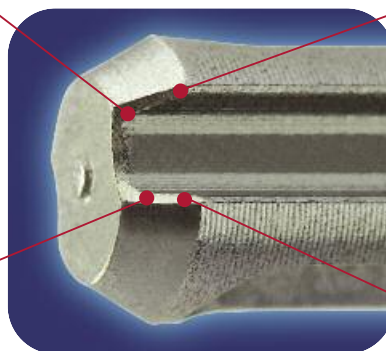


The widened entry profile of the 'Fast-Fit' Eclipse SDS drive-groove rapidly guides the shank into the locked position. Reduces down-time and minimises chuck wear. Compatible with all SDS/SDS Plus machines

Enables drill bit to be easily located in SDS Plus chuck

Widened entry profile of SDS drive-groove for 'Fast Fix

Ease of location reduces wear on machine chuck



Significantly faster to load an Eclipse bit compared with a standard SDS Plus

Metric

Part No	Size Ø x Length	Working Length	Pack Size
EC-SDS040011	4.0 x 110mm	50mm	10
EC-SDS050011	5.0 x 110mm	50mm	10
EC-SDS055011	5.5 x 110mm	50mm	10
EC-SDS060011	6.0 x 110mm	50mm	10
EC-SDS070011	7.0 x 110mm	50mm	10
EC-SDS080011	8.0 x 110mm	50mm	10
EC-SDS100011	10.0 x 110mm	50mm	10
EC-SDS040016	4.0 x 160mm	100mm	10
EC-SDS050016	5.0 x 160mm	100mm	10
EC-SDS055016	5.5 x 160mm	100mm	10
EC-SDS060016	6.0 x 160mm	100mm	10
EC-SDS065016	6.5 x 160mm	100mm	10
EC-SDS070016	7.0 x 160mm	100mm	10
EC-SDS080016	8.0 x 160mm	100mm	10
EC-SDS090016	9.0 x 160mm	100mm	10
EC-SDS100016	10.0 x 160mm	100mm	10
EC-SDS110016	11.0 x 160mm	100mm	10
EC-SDS120016	12.0 x 160mm	100mm	10
EC-SDS130015	13.0 x 150mm	100mm	10
EC-SDS140015	14.0 x 150mm	100mm	10
EC-SDS150015	15.0 x 150mm	100mm	10
EC-SDS160015	16.0 x 150mm	100mm	10
EC-SDS050021	5.0 x 210mm	150mm	10
EC-SDS055021	5.5 x 210mm	150mm	10
EC-SDS060021	6.0 x 210mm	150mm	10
EC-SDS065021	6.5 x 210mm	150mm	10
EC-SDS070021	7.0 x 210mm	150mm	10
EC-SDS080021	8.0 x 210mm	150mm	10
EC-SDS090021	9.0 x 210mm	150mm	10
EC-SDS100021	10.0 x 210mm	150mm	10
EC-SDS120021	12.0 x 210mm	150mm	10
EC-SDS140020	14.0 x 200mm	150mm	10
EC-SDS160020	16.0 x 200mm	150mm	10
EC-SDS180020	18.0 x 200mm	150mm	10
EC-SDS200020	20.0 x 200mm	150mm	10
EC-SDS055026	5.5 x 260mm	200mm	10
EC-SDS060026	6.0 x 260mm	200mm	10
EC-SDS065025	6.5 x 250mm	200mm	10
EC-SDS080026	8.0 x 260mm	200mm	10

Part No	Size Ø x Length	Working Length	Pack Size
EC-SDS100026	10.0 x 260mm	200mm	10
EC-SDS110026	11.0 x 260mm	200mm	10
EC-SDS120025	12.0 x 250mm	200mm	10
EC-SDS130025	13.0 x 250mm	200mm	10
EC-SDS140025	14.0 x 250mm	200mm	10
EC-SDS150025	15.0 x 250mm	200mm	10
EC-SDS160025	16.0 x 250mm	200mm	10
EC-SDS180025	18.0 x 250mm	200mm	10
EC-SDS220025	22.0 x 250mm	200mm	10
EC-SDS240025	24.0 x 250mm	200mm	1
EC-SDS250025	25.0 x 250mm	200mm	1
EC-SDS260025	26.0 x 250mm	200mm	1
EC-SDS100031	10.0 x 310mm	250mm	10
EC-SDS110031	11.0 x 310mm	250mm	10
EC-SDS120030	12.0 x 300mm	250mm	10
EC-SDS130030	13.0 x 300mm	250mm	10
EC-SDS140030	14.0 x 300mm	250mm	10
EC-SDS160030	16.0 x 300mm	250mm	10
EC-SDS180030	18.0 x 300mm	250mm	10
EC-SDS200030	20.0 x 300mm	250mm	10
EC-SDS100036	10.0 x 360mm	300mm	10
EC-SDS060045	6.0 x 450mm	400mm	1
EC-SDS080045	8.0 x 450mm	400mm	1
EC-SDS100045	10.0 x 450mm	400mm	1
EC-SDS120045	12.0 x 450mm	400mm	1
EC-SDS130045	13.0 x 450mm	400mm	1
EC-SDS140045	14.0 x 450mm	400mm	1
EC-SDS150045	15.0 x 450mm	400mm	1
EC-SDS160045	16.0 x 450mm	400mm	1
EC-SDS180045	18.0 x 450mm	400mm	1
EC-SDS200045	20.0 x 450mm	400mm	1
EC-SDS220045	22.0 x 450mm	400mm	1
EC-SDS240045	24.0 x 450mm	400mm	1
EC-SDS250045	25.0 x 450mm	400mm	1
EC-SDS260045	26.0 x 450mm	400mm	1
EC-SDS280045	28.0 x 450mm	400mm	1
EC-SDS300045	30.0 x 450mm	400mm	1

Part No	Size Ø x Length	Working Length	Pack Size
EC-SDS080060	8.0 x 600mm	550mm	1
EC-SDS100060	10.0 x 600mm	550mm	1
EC-SDS120060	12.0 x 600mm	550mm	1
EC-SDS140060	14.0 x 600mm	550mm	1
EC-SDS160060	16.0 x 600mm	550mm	1
EC-SDS180060	18.0 x 600mm	550mm	1
EC-SDS200060	20.0 x 600mm	550mm	1
EC-SDS220060	22.0 x 600mm	550mm	1
EC-SDS250060	25.0 x 600mm	550mm	1
EC-SDS160080	16.0 x 800mm	750mm	1
EC-SDS100100	10.0 x 1000mm	950mm	1
EC-SDS120100	12.0 x 1000mm	950mm	1
EC-SDS140100	14.0 x 1000mm	950mm	1
EC-SDS180100	18.0 x 1000mm	950mm	1
EC-SDS200100	20.0 x 1000mm	950mm	1
EC-SDS220100	22.0 x 1000mm	950mm	1
EC-SDS250100	25.0 x 1000mm	950mm	1

PREMIUM SDS PLUS HAMMER DRILL BITS

Imperial

Part No	Size Ø x Length	Working Length	Pack Size	Part No	Size Ø x Length	Working Length	Pack Size	Part No	Size Ø x Length	Working Length	Pack Size
EC-SDS031604	3/16 x 4"	2"	10	EC-SDS031608	3/16 x 8"	6"	10	EC-SDS058012	5/8 x 12"	10"	10
EC-SDS014004	1/4 x 4"	2"	10	EC-SDS073208	7/32 x 8"	6"	10	EC-SDS034012	3/4 x 12"	10"	10
EC-SDS093294	9/32 x 4"	2"	10	EC-SDS014008	1/4 x 8"	6"	10	EC-SDS078012	7/8 x 12"	10"	10
EC-SDS051604	5/16 x 4"	2"	10	EC-SDS051608	5/16 x 8"	6"	10	EC-SDS100012	1x12"	10"	1
EC-SDS031606	3/16 x 6"	4"	10	EC-SDS038008	3/8 x 8"	6"	10	EC-SDS038018	3/8 x 18"	16"	1
EC-SDS073206	7/32 x 6"	4"	10	EC-SDS058008	5/8 x 8"	6"	10	EC-SDS012018	1/2 x 18"	16"	1
EC-SDS014006	1/4 x 6"	4"	10	EC-SDS034008	3/4 x 8"	6"	10	EC-SDS091618	9/16 x 18"	16"	1
EC-SDS093206	9/32 x 6"	4"	10	EC-SDS012010	1/2 x 10"	8"	10	EC-SDS058018	5/8 x 18"	16"	1
EC-SDS051606	5/16 x 6"	4"	10	EC-SDS058010	5/8 x 10"	8"	10	EC-SDS034018	3/4 x 18"	16"	1
EC-SDS038006	3/8 x 6"	4"	10	EC-SDS073212	7/32 x 12"	10"	10	EC-SDS078018	7/8 x 18"	16"	1
EC-SDS071606	7/16 x 6"	4"	10	EC-SDS051612	5/16 x 12"	10"	10	EC-SDS100018	1 x 18"	16"	1
EC-SDS012006	1/2 x 6"	4"	10	EC-SDS071612	7/16 x 12"	10"	10	EC-SDS058024	5/8 x 24"	22"	1
EC-SDS091606	9/16 x 6"	4"	10	EC-SDS012012	1/2 x 12"	10"	10	EC-SDS100024	1 x 24"	22"	1
EC-SDS058006	5/8 x 6"	4"	10	EC-SDS091612	9/16 x 12"	10"	10				
EC-SDS034006	3/4 x 6"	4"	10								

Non-standard sizes are available subject to lead-time, minimum order quantity and pricing agreement.

STANDARD SDS PLUS HAMMER DRILL BITS

Fast, efficient and accurate

Manufactured from high quality steel for strength and durability. Atmosphere controlled hardening, tempering and brazing also adds to the overall strength. Double helix flute quickly removes dust and debris.



Metric

Part No	Size Ø x Length	Working Length	Pack Size	Part No	Size Ø x Length	Working Length	Pack Size	Part No	Size Ø x Length	Working Length	Pack Size
ESDS-5X110	5.0 x 110mm	60mm	25	ESDS-8X210	8.0 x 210mm	160mm	25	ESDS-14X310	14.0 x 310mm	260mm	25
ESDS-5.5X110	5.5 x 110mm	60mm	25	ESDS-10X210	10.0 x 210mm	160mm	20	ESDS-16X310	16.0 x 310mm	260mm	10
ESDS-6X110	6.0 x 110mm	60mm	25	ESDS-12X210	12.0 x 210mm	160mm	20	ESDS-18X310	18.0 x 310mm	260mm	10
ESDS-6.5X110	6.5 x 110mm	60mm	25	ESDS-14X210	14.0 x 210mm	160mm	20	ESDS-20X310	20.0 x 310mm	260mm	10
ESDS-7X110	7.0 x 110mm	60mm	25	ESDS-16X210	16.0 x 210mm	160mm	10	ESDS-8X450	8.0 x 450mm	400mm	25
ESDS-8X110	8.0 x 110mm	60mm	25	ESDS-18X210	18.0 x 210mm	160mm	10	ESDS-10X450	10.0 x 450mm	400mm	20
ESDS-10X110	10.0 x 110mm	60mm	25	ESDS-20X210	20.0 x 210mm	160mm	10	ESDS-12X450	12.0 x 450mm	400mm	20
ESDS-5X160	5.0 x 160mm	110mm	25	ESDS-5.5X260	5.5 x 260mm	210mm	25	ESDS-14X450	14.0 x 450mm	400mm	20
ESDS-5.5X160	5.5 x 160mm	110mm	25	ESDS-6X260	6.0 x 260mm	210mm	25	ESDS-16X450	16.0 x 450mm	400mm	10
ESDS06X160	6.0 x 160mm	110mm	25	ESDS-6.5X260	6.5 x 260mm	210mm	25	ESDS-18X450	18.0 x 450mm	400mm	10
ESDS-6.5X160	6.5 x 160mm	110mm	25	ESDS-8X260	8.0 x 260mm	210mm	25	ESDS-20X450	20.0 x 450mm	400mm	10
ESDS-7X160	6.5 x 160mm	110mm	25	ESDS-10X260	10.0 x 260mm	210mm	20	ESDS-25X450	25.0 x 450mm	400mm	10
ESDS-8X160	8.0 x 160mm	110mm	25	ESDS-12X260	12.0 x 260mm	210mm	20				
ESDS-10X160	10.0 x 160mm	110mm	20	ESDS-14X260	14.0 x 260mm	210mm	20				
ESDS-12X160	12.0 x 160mm	110mm	20	ESDS-16X260	16.0 x 260mm	210mm	10				
ESDS-5X210	5.0 x 210mm	160mm	25	ESDS-18X260	18.0 x 260mm	210mm	10				
ESDS-5.5X210	5.5 x 210mm	160mm	25	ESDS-20X260	20.0 x 260mm	210mm	10				
ESDS-6X210	6.0 x 210mm	160mm	25	ESDS-10X310	10.0 x 310mm	260mm	20				
ESDS-6.5X210	6.5 x 210mm	160mm	25	ESDS-11X310	11.0 x 310mm	260mm	25				
ESDS-7X210	7.0 x 210mm	160mm	25	ESDS-12X310	12.0 x 310mm	260mm	25				

MASONRY DRILL BITS

Fast, efficient and accurate

Straight shank bits for use in percussion drilling in concrete, brick, stonework and cement.



Metric

Part No	Size Ø x Length	Working Length	Pack Size
EMD30X60	3 x 60mm	30mm	1
EMD35X70	3.5 x 70mm	40mm	1
EMD40X70	4 x 70mm	50mm	1
EMD45X75	4.5 x 75mm	50mm	1
EMD50X85	5 x 85mm	50mm	1
EMD55X85	5.5 x 85mm	60mm	1
EMD60X100	6 x 100mm	60mm	1
EMD65X100	6.5 x 100mm	60mm	1
EMD70X100	7 x 100mm	80mm	1
EMD80X120	8 x 120mm	80mm	1
EMD90X120	9 x 120mm	80mm	1
EMD10X120	10 x 120mm	90mm	1
EMD11X150	11 x 150mm	90mm	1
EMD12X150	12 x 150mm	90mm	1
EMD13X150	13 x 150mm	90mm	1
EMD14X140	14 x 140mm	90mm	1
EMD15X160	15 x 160mm	90mm	1

Part No	Size Ø x Length	Working Length	Pack Size
EMD16X150	16 x 150mm	100mm	1
EMD18X150	18 x 150mm	100mm	1
EMD20X160	20 x 160mm	100mm	1
EMD22X160	22 x 160mm	100mm	1
EMD25X160	25 x 160mm	100mm	1
EMD50X200	5 x 200mm	112mm	1
EMD55X200	5.5 x 200mm	112mm	1
EMD60X200	6 x 200mm	112mm	1
EMD65X200	6.5 x 200mm	112mm	1
EMD70X200	7 x 200mm	112mm	1
EMD80X200	8 x 200mm	112mm	1
EMD10X200	10 x 200mm	112mm	1
EMD12X200	12 x 200mm	112mm	1
EMD60X400	6 x 400mm	350mm	1
EMD80X400	8 x 400mm	350mm	1
EMD10X400	10 x 400mm	350mm	1
EMD12X400	12 x 400mm	350mm	1
EMD14X400	14 x 400mm	350mm	1
EMD16X400	16 x 400mm	350mm	1

Part No	Size Ø x Length	Working Length	Pack Size
EMD18X400	18 x 400mm	350mm	1
EMD20X400	20 x 400mm	350mm	1
EMD22X400	22 x 400mm	350mm	1
EMD25X400	25 x 400mm	350mm	1
EMD60X600	6 x 600mm	550mm	1
EMD80X600	8 x 600mm	550mm	1
EMD10X600	10 x 600mm	550mm	1
EMD12X600	12 x 600mm	550mm	1
EMD14X600	14 x 600mm	550mm	1
EMD16X600	16 x 600mm	550mm	1
EMD18X600	18 x 600mm	550mm	1
EMD20X600	20 x 600mm	550mm	1
EMD22X600	22 x 600mm	550mm	1
EMD25X600	25 x 600mm	550mm	1

HSS DRILL BITS

Fast, efficient and accurate

Manufactured to DIN 338 standards with an 118 degree point angle that is suitable for drilling into a wide range of materials, including steel, cast iron, copper, brass, iron and plastic. Flute geometry designed for rapid removal of the drilled material.



Metric

Part No	Size Ø x Length	Pack Size
EHSS10	1.00mm	1 tube of 10
EHSS15	1.50mm	1 tube of 10
EHSS20	2.00mm	1 tube of 10
EHSS21	2.10mm	1 tube of 10
EHSS22	2.20mm	1 tube of 10
EHSS25	2.50mm	1 tube of 10
EHSS30	3.00mm	1 tube of 10
EHSS31	3.10mm	1 tube of 10
EHSS32	3.20mm	1 tube of 10
EHSS35	3.50mm	1 tube of 10
EHSS40	4.00mm	1 tube of 10
EHSS41	4.10mm	1 tube of 10
EHSS42	4.20mm	1 tube of 10
EHSS43	4.30mm	1 tube of 10
EHSS45	4.50mm	1 tube of 10
EHSS50	5.00mm	1 tube of 10

Part No	Size Ø x Length	Pack Size
EHSS55	5.50mm	1 tube of 10
EHSS60	6.00mm	1 tube of 10
EHSS65	6.50mm	1 tube of 10
EHSS70	7.00mm	1 tube of 10
EHSS75	7.50mm	1 tube of 10
EHSS80	8.00mm	1 tube of 5
EHSS85	8.50mm	1 tube of 5
EHSS90	9.00mm	1 tube of 5
EHSS95	9.50mm	1 tube of 5
EHSS100	10.00mm	1 tube of 5
EHSS105	10.50mm	1 tube of 5
EHSS110	11.00mm	1 tube of 5
EHSS115	11.50mm	1 tube of 5
EHSS120	12.00mm	1 tube of 5
EHSS125	12.50mm	1 tube of 5
EHSS130	13.00mm	1 tube of 5

Part No	Description	Pack Size
EHSS6PC	HSS Drill Bits Set - 6pc Contains: 2, 3, 4, 5, 6, 8mm - PVC Wallet	1
EHSS19PC	HSS Drill Bits Set - 19pc Contains: 1, 1.5, 2, 2.5, 3, 3.5, 4, 4.5, 5, 5.5, 6, 6.5, 7, 7.5, 8, 8.5, 9, 9.5, 10mm - Metal Case	1
EHSS6PC	HSS Drill Bits Set - 25pc Contains: 1, 1.5, 2, 2.5, 3, 3.5, 4, 4.5, 5, 5.5, 6, 6.5, 7, 7.5, 8, 8.5, 9, 9.5, 10, 10.5, 11, 11.5, 12, 12.5, 13mm - Metal Case	1

UTILITY KNIVES & BLADES TAPE MEASURES



UTILITY KNIVES & BLADES

Standard Trimming Knife

Standard retractable utility knife with a zinc alloy body. Supplied with one blade



Part No	Description	Pack Qty
E1770	Standard Trimming Knife	12 (bulk pack)



Heavy Duty Trimming Knife

Heavy duty retractable utility knife designed to fit the hand and maintain a strong grip. Ideal for cutting tough materials such as carpets, roofing felt and vinyl. Hinged body assists quick blade change. Supplied with one blade



Part No	Description	Pack Qty
E1780	Heavy Duty Trimming Knife	8 (bulk pack)

Utility Blades

Supplied in handy dispensers which allow easy access to one blade at a time and minimises contact with the blade



Part No	Description	Pack Qty
1702BP	Straight	100
1702R	Straight	10
1603BC	Hooked (no dispenser cellophaned in)	100

TAPE MEASURES

Tape Measures

Auto lock system. Magnetic hook & pause button. Blades with both metric and imperial graduations or just metric. Belt clip and wrist band. Ergonomic soft feel grip



Part No	Size	Description	Pack Qty
E30430	3m (10ft)	Metric & Imperial Graduations	12
E30435	5m (16ft)	Metric & Imperial Graduations	12
E30440	8m (26ft)	Metric & Imperial Graduations	6
E30430M	3m	Metric Only Graduations	12
E30435M	5m	Metric Only Graduations	12
E30440M	8m	Metric Only Graduations	6

Please see our website for further details on all of our ranges



**SPEAR &
JACKSON**



www.neilltools.com

ECLIPSE

PROFESSIONAL ENGINEERING TOOLS



CELEBRATING
OVER
100
YEARS
OF EXPERIENCE

Neill Tools Ltd, A Spear & Jackson Group Company,
Atlas Way, Atlas North, Sheffield S4 7QQ, England

www.eclipse-tools.co.uk

e-mail: export@neill-tools.co.uk

e-mail: sales@neill-tools.co.uk

Telephone: +44 (0) 114 281 4242 Fax: +44 (0) 114 281 4252/53

Due to continuous product development and improvement, Neill Tools reserves the right to modify product design and materials without prior notice.