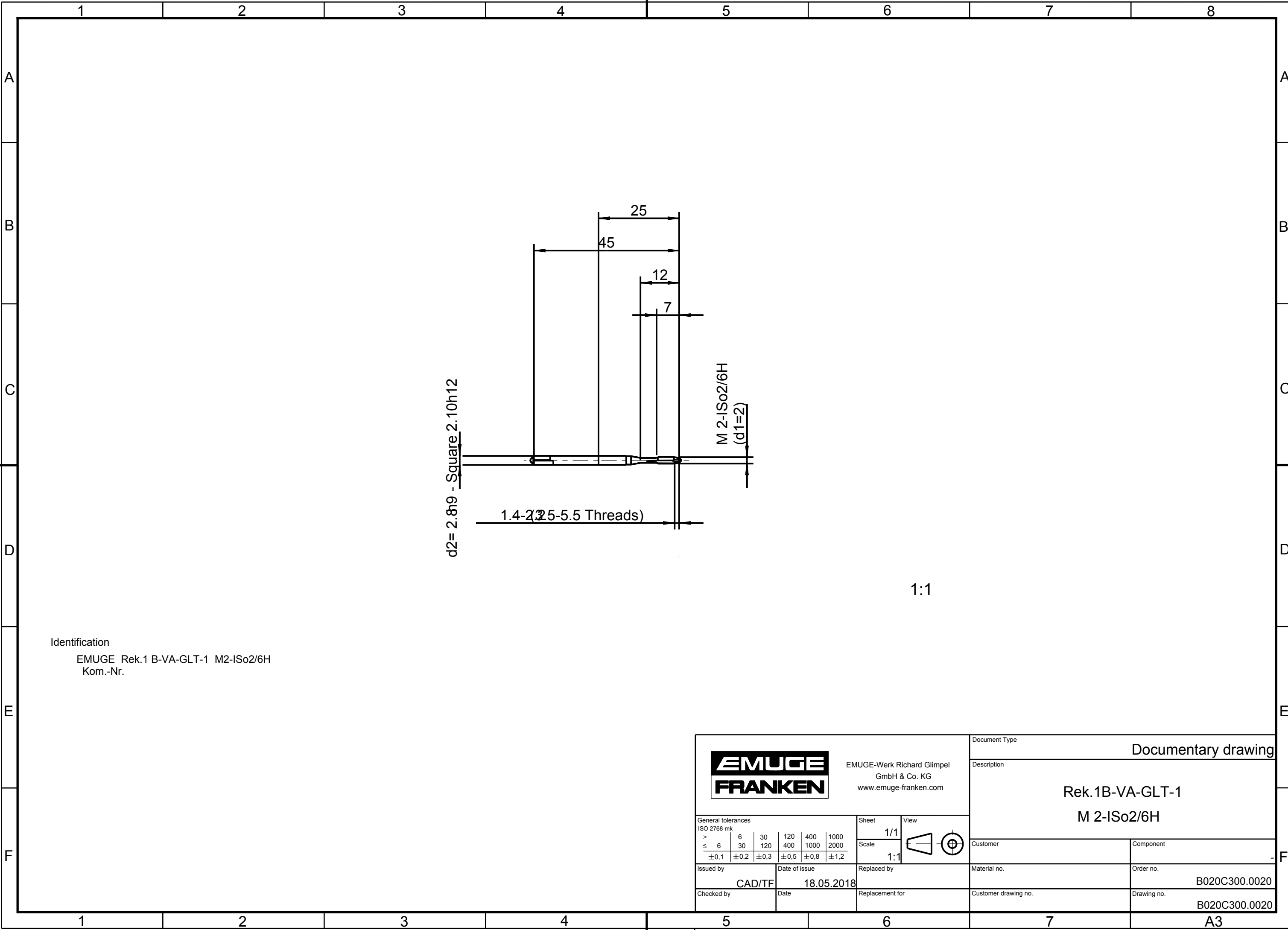


Weder die Herstellung dieses Dokuments, Vervielfältigung und Mitteilung seines Inhalts, noch die Weitergabe der Rechte, soweit nicht ausdrücklich gestattet, Zuwahlungen verpflichtet zu Schadensersatz. Alle Rechte für den Fall der Patent-, Gebrauchsmuster- oder Geschmacksunterzeichnung vorbehalten.
 "Schutzvermerk nach DIN ISO 16016 beachten" Technische Änderungen vorbehalten!

Issued with CAD! Changes to be made only on the CAD/CAM modell

The reproduction, distribution and utilization of this document as well as the communication of its contents to others without explicit authorization is prohibited. All rights reserved in the event of the grant of a patent, utility model or design.
 "Observe protective note according to DIN ISO 16016" Technical data is subject to change without notice!



Identification

EMUGE Rek.1 B-VA-GLT-1 M2-ISO2/6H
 Kom.-Nr.

EMUGE-Werk Richard Glimpel GmbH & Co. KG www.emuge-franken.com		Document Type		Documentary drawing	
		Description		Rek.1B-VA-GLT-1 M 2-ISO2/6H	
General tolerances ISO 2768-mk		Sheet	View		
>	6 30 120 400 1000	1/1			
≤	6 30 120 400 1000 2000	Scale	1:1		
±0,1	±0,2 ±0,3 ±0,5 ±0,8 ±1,2	Issued by	Date of issue		Customer
		CAD/TF	18.05.2018		Component
		Checked by	Date		Material no.
			Replacement for		Order no.
					B020C300.0020
					Customer drawing no.
					Drawing no.
					B020C300.0020

A3