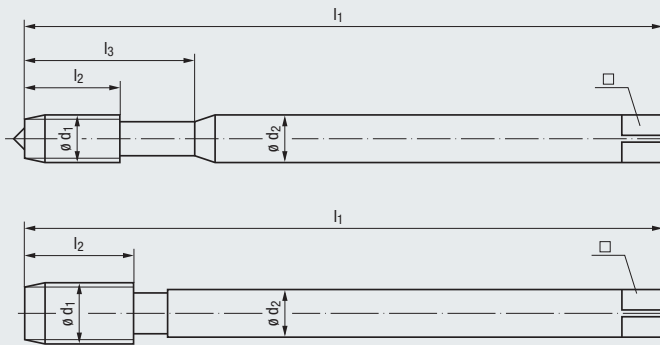


- Product Finder
- V_c
- UNC
- UNF
- UNEF
- UN-8
- M**
- MF
- NPSM/NPSC
- NPSF
- Rp (BSPP)
- G
- NPT
- NPTF
- Rc (BSPT)
- STI
- SELF-LOCK
- Accessories
- Tech. Info

Extra Length • DIN Shank

With extra long shank



Reinforced Shank (M3 - M8)

Reduced Shank (M6 - M20)

STEEL

Steel Materials



**ISO Metric Coarse Thread
DIN 13**

Class of Fit
Coating
Cutting Material
Technical Characteristics

Class of Fit	ISO 2/6H	ISO 2/6H	ISO 2/6H
Coating	HSS Extra	HSS Extra	HSS Extra
Cutting Material	HSS Extra	HSS Extra	HSS Extra
Technical Characteristics	B / 4-5	E / 1.5-2	R35
	E / 0	E / 0	C / 2-3
			E / 0

Thread Depth and Hole Shape

Thread Depth and Hole Shape	max. 3 x d ₁	max. 2 x d ₁	max. 2.5 x d ₁

Applications – Material

Applications – Material	P 1.1-3.1 N 2.2	P 2.1-3.1	P 1.1-3.1 N 2.2
-------------------------	---------------------------	------------------	---------------------------

Reinforced Shank

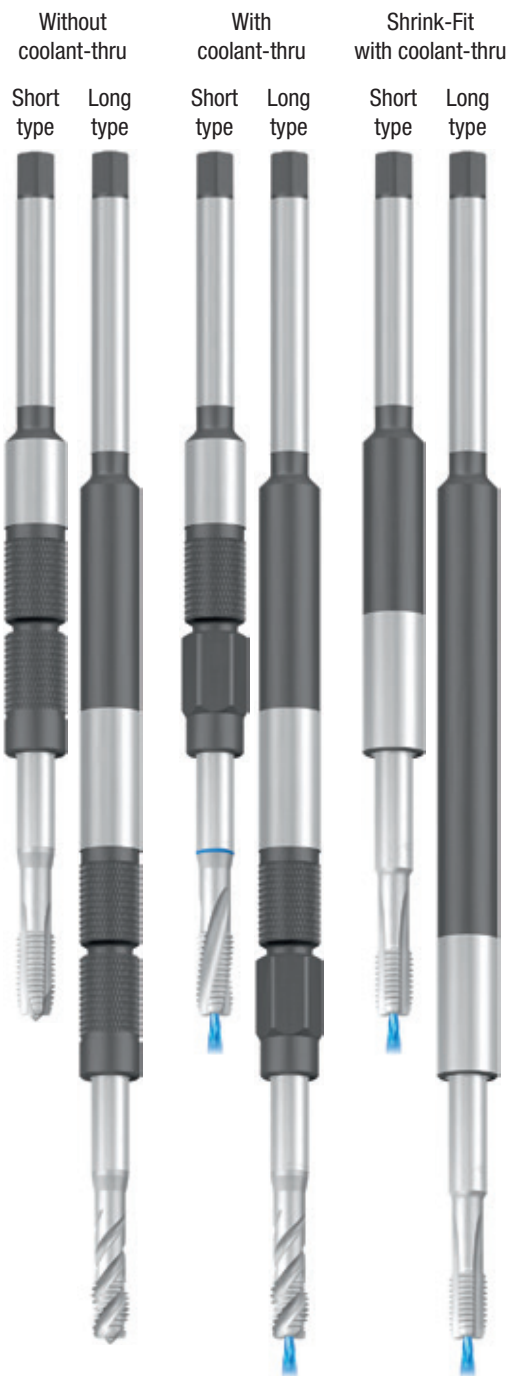
Nominal Size								Tool Identification		B2208900		B2461000		B2501000	
Size	P	l ₁	l ₂	l ₃	mm	Ø d ₂	□	Dimens. ID	Rekord 1B-STEEL-L LS	Flutes	Rekord 1D-STEEL/E LS	Flutes	Enorm 1-STEEL-LS	Flutes	
M 3	0.5	100	11	18		3.5	2.7	2.5	★	3	★	3	★	3	
M 4	0.7	125	13	21		4.5	3.4	3.3	★	3	★	3	★	3	
M 5	0.8	140	15	25		6	4.9	4.2	★	3	●	3	★	3	
M 6	1	160	17	30		6	4.9	5	★	3	●	3	★	3	
M 8	1.25	180	20	35		8	6.2	6.8	★	3	●	3	★	3	

Reduced Shank

Nominal Size								Tool Identification		C2208900		C2461000		C2501000	
Size	P	l ₁	l ₂	l ₃	mm	Ø d ₂	□	Dimens. ID	Rekord 2B-STEEL-L LS	Flutes	Rekord 2D-STEEL/E LS	Flutes	Enorm 2-STEEL-LS	Flutes	
M 6	1	160	17	—		4.5	3.4	5	★	3	★	3	★	3	
M 8	1.25	180	20	—		6	4.9	6.8	★	3	★	3	★	3	
M 10	1.5	200	22	—		7	5.5	8.5	★	3	★	3	★	3	
M 12	1.75	224	24	—		9	7	10.2	★	3	★	3	★	3	
M 14	2	224	26	—		11	9	12	★	3	★	3	★	3	
M 16	2	224	27	—		12	9	14	★	3	★	3	★	3	
M 18	2.5	250	30	—		14	11	15.5	★	3	★	3	★	3	
M 20	2.5	280	32	—		16	12	17.5	★	3	★	3	★	3	



As a further alternative to our compact types LS we can offer you our special shank extensions without and with coolant-thru (IKZ) for standard taps (see pages 132-138).



ISO 2/6H	ISO 2/6H	ISO 2/6H	ISO 2/6H	6HX
NT	GLT-1		GLT-1	NT
HSS Extra	HSS Extra	HSS Extra	HSS Extra	HSS Extra
		R35	R35	
B / 4-5	B / 4-5	C / 2-3	C / 2-3	C / 2-3
E / O / P	E / O / P	E / O / P	E / O / P	E / O / P

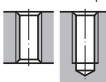
max. 3 x d₁



max. 2.5 x d₁



max. 2 x d₁



P 1.1-3.1	P 1.1-4.1	P 1.1-3.1	P 1.1-4.1	P 1.1-3.1
M 1.1-2.1	M 1.1-3.1	M 1.1-2.1	M 1.1-3.1	K 1.1-4.2
K 2.1	K 2.1	K 2.1	K 2.1	N 2.4-7
N 2.2, 2.5-6	N 2.2			N 4.1, 5.1

B2203000		B220C300		B2503000		B250C300		B2100501	
Rekord 1B-VA-LS NT	Flutes	Rekord 1B-VA-LS GLT-1	Flutes	Enorm 1-VA-LS	Flutes	Enorm 1-VA-LS GLT-1	Flutes	Rekord 1A-H-LS NT	Flutes
★	3			★	3	★	3	★	3
★	3	upon		★	3	★	3	★	3
★	3			★	3	★	3	★	3
★	3	request		★	3	★	3	★	3
★	3			★	3	★	3	★	3

C2203000		C220C300		C2503000		C2100501	
Rekord 2B-VA-LS NT	Flutes	Rekord 2B-VA-LS GLT-1	Flutes	Enorm 2-VA-LS	Flutes	Rekord 2A-H-LS NT	Flutes
★	3			★	3	★	3
★	3	upon		★	3	★	3
★	3			★	3	★	3
★	3	request		★	3	★	3
★	3			★	3	★	3
★	3			★	3	★	4
★	3			★	3	★	4

● = In stock
★ = Allow 7 days for delivery

1) From M4 also available with IKZ (axial coolant-thru)
2) From M5 also available with IKZN (axial coolant-thru with radial flow into the flutes)

Product Finder

V_c

UNC

UNF

UNEF

UN-8

M

MF

NPSM/NPSC

NPSF

Rp (BSPP)

G

NPT

NPTF

Rc (BSPT)

STI

SELF-LOCK

Accessories

Tech. Info

