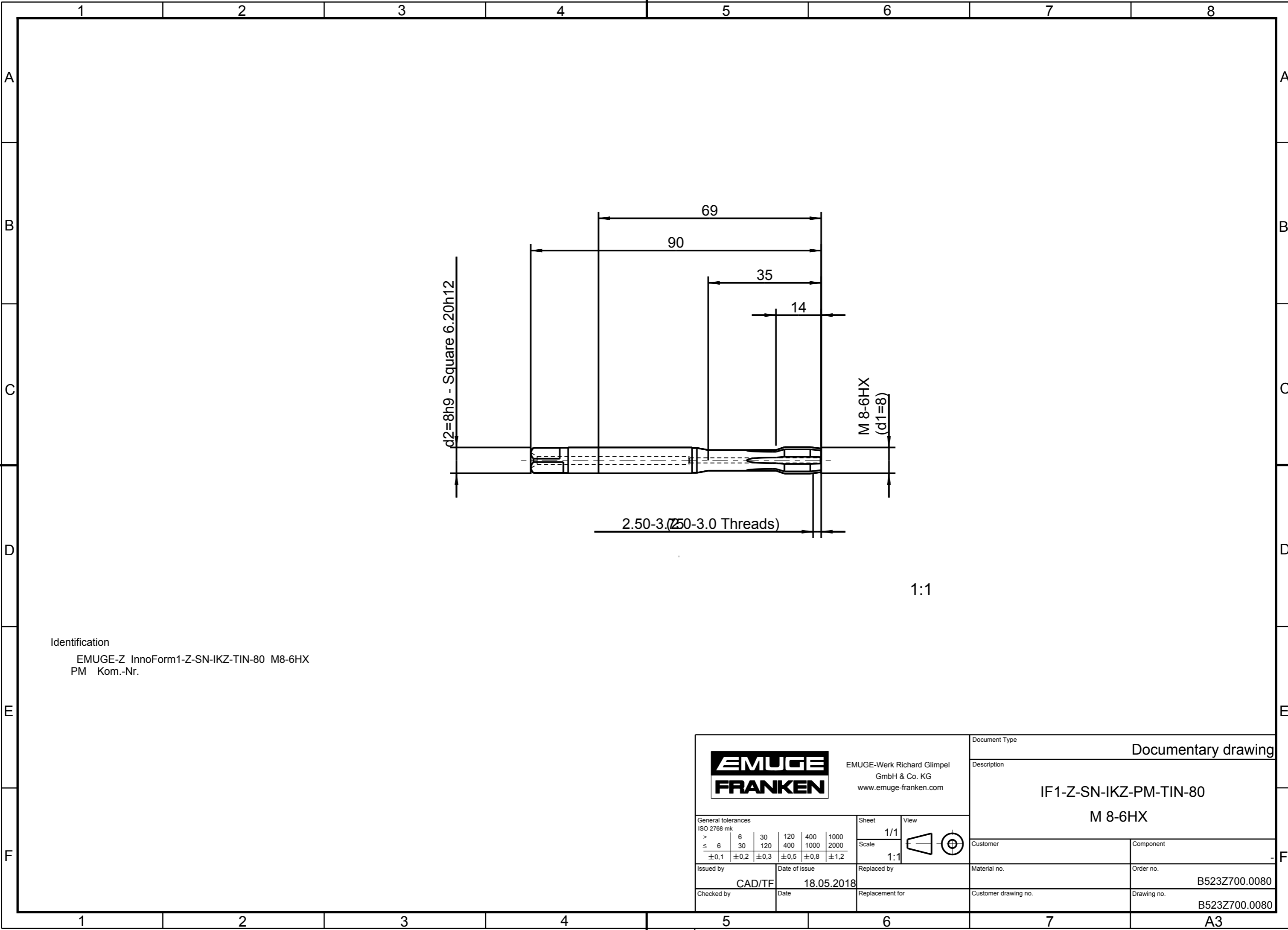


Weder die noch Herstellung dieses Dokuments, Vervielfältigung und Mitteilung seines Inhalts, sind
 verboten, soweit nicht ausdrücklich gestattet. Zuwiderhandlungen verpflichten zu Schadenersatz. Alle
 Rechte für den Fall der Patent-, Gebrauchsmuster- oder Geschmacksunterzeichnung vorbehalten.
 "Schutzvermerk nach DIN ISO 16016 beachten" Technische Änderungen vorbehalten!


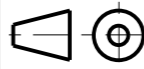
Issued with CAD! Changes to be made only on the CAD/CAM modell

The reproduction, distribution and utilization of this document as well as the
 communication of its contents to others without explicit authorization is
 prohibited. All rights reserved in the event of the grant of a patent, utility model or design.
 "Observe protective mark according to DIN ISO 16016" Technical data is subject to change without notice!



Identification

EMUGE-Z InnoForm1-Z-SN-IKZ-TIN-80 M8-6HX
 PM Kom.-Nr.

 EMUGE-Werk Richard Glimpel GmbH & Co. KG www.emuge-franken.com		Document Type		Documentary drawing	
		Description		IF1-Z-SN-IKZ-PM-TIN-80 M 8-6HX	
General tolerances ISO 2768-mk		Sheet	View	Customer	Component
>	6 30 120 400 1000	1/1			
≤	6 30 120 400 1000 2000	Scale	1:1		
	±0,1 ±0,2 ±0,3 ±0,5 ±0,8 ±1,2	Issued by	Date of issue	Material no.	Order no.
		CAD/TF	18.05.2018		B523Z700.0080
		Checked by	Date	Customer drawing no.	Drawing no.
					B523Z700.0080

A3