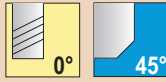


NEW SERIES



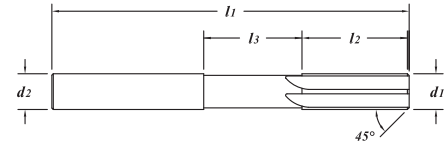
.0590" - .0820"
(1.499mm - 2.083mm)

TOLERANCES

<i>d1</i>	.0590" - .2509" (1.498 - 6.372mm)	+0.002" - .0000" (+0.050 - .0000mm)
	.2510" - .5020" (6.375 - 12.750mm)	+0.003" - .0000" (+0.075 - .0000mm)
<i>d2</i>	.0590" - .2509" (1.498 - 6.372mm)	+0.002" - .0000" (+0.050 - .0000mm)
	.2510" - .5020" (6.375 - 12.750mm)	+0.003" - .0000" (+0.075 - .0000mm)

REAMERS

Solid Carbide Submicron Grain
Straight - RHC Flutes
Standard 45° Lead Chamfer
Neck diameter is .010" ±.002" less than (*d1*) fluted diameter



EDP#	<i>d1</i> † Diameter		<i>d2</i> Shank Diameter	<i>l1</i> Overall Length	<i>l2</i> Flute Length	<i>l3</i> Neck Length	Number Flutes	1-11	12-24	25-49	50-100
	Decimal	Metric									
95066	.0590	1.499	.0590"	1-1/2"	3/8"	.250"	4	13.56	12.97	12.38	11.79
95069	.0591	1.500	.0591"	1-1/2"	3/8"	.250"	4	13.56	12.97	12.38	11.79
95072	.0595	#53 1.511	.0595"	1-1/2"	3/8"	.250"	4	13.56	12.97	12.38	11.79
95075	.0600	1.524	.0600"	1-1/2"	3/8"	.250"	4	13.56	12.97	12.38	11.79
95078	.0605	1.537	.0605"	1-1/2"	3/8"	.250"	4	13.56	12.97	12.38	11.79
95081	.0610	1.549	.0610"	1-1/2"	3/8"	.250"	4	13.56	12.97	12.38	11.79
95084	.0615	1.562	.0615"	1-1/2"	3/8"	.250"	4	13.56	12.97	12.38	11.79
95087	.0620	1.575	.0620"	1-1/2"	3/8"	.250"	4	13.56	12.97	12.38	11.79
95090	.0625	1/16" 1.588	.0625"	1-1/2"	3/8"	.250"	4	13.56	12.97	12.38	11.79
95093	.0630	1.600	.0630"	1-1/2"	3/8"	.250"	4	13.56	12.97	12.38	11.79
95096	.0635	#52 1.613	.0635"	1-1/2"	3/8"	.250"	4	13.56	12.97	12.38	11.79
95099	.0640	1.626	.0640"	1-1/2"	3/8"	.250"	4	13.56	12.97	12.38	11.79
95102	.0645	1.638	.0645"	1-1/2"	3/8"	.250"	4	13.56	12.97	12.38	11.79
95105	.0650	1.651	.0650"	1-1/2"	3/8"	.250"	4	13.56	12.97	12.38	11.79
95108	.0660	1.676	.0660"	1-3/4"	1/2"	.250"	4	13.56	12.97	12.38	11.79
95111	.0670	#51 1.702	.0670"	1-3/4"	1/2"	.250"	4	13.56	12.97	12.38	11.79
95114	.0680	1.727	.0680"	1-3/4"	1/2"	.375"	4	13.56	12.97	12.38	11.79
95117	.0690	1.753	.0690"	1-3/4"	1/2"	.375"	4	13.56	12.97	12.38	11.79
95120	.0700	#50 1.778	.0700"	1-3/4"	1/2"	.375"	4	13.56	12.97	12.38	11.79
95123	.0710	1.803	.0710"	1-3/4"	1/2"	.375"	4	13.56	12.97	12.38	11.79
95126	.0720	1.829	.0720"	1-3/4"	1/2"	.375"	4	13.56	12.97	12.38	11.79
95129	.0730	#49 1.854	.0730"	1-3/4"	1/2"	.375"	4	13.56	12.97	12.38	11.79
95132	.0740	1.880	.0740"	1-3/4"	1/2"	.375"	4	13.56	12.97	12.38	11.79
95135	.0750	1.905	.0750"	1-3/4"	1/2"	.375"	4	13.56	12.97	12.38	11.79
95138	.0760	#48 1.930	.0760"	1-3/4"	1/2"	.375"	4	13.56	12.97	12.38	11.79
95141	.0770	1.956	.0770"	1-3/4"	1/2"	.375"	4	13.56	12.97	12.38	11.79
95144	.0780	1.981	.0780"	1-3/4"	1/2"	.375"	4	13.56	12.97	12.38	11.79
95147	.0781	5/64" 1.984	.0781"	1-3/4"	1/2"	.375"	4	13.56	12.97	12.38	11.79
95150	.0785	#47 1.994	.0785"	1-3/4"	1/2"	.375"	4	13.56	12.97	12.38	11.79
95153	.0787	2.000	.0787"	1-3/4"	1/2"	.375"	4	13.56	12.97	12.38	11.79
95156	.0790	2.007	.0790"	1-3/4"	1/2"	.375"	4	13.56	12.97	12.38	11.79
95159	.0800	2.032	.0800"	1-3/4"	1/2"	.375"	4	13.56	12.97	12.38	11.79
95162	.0810	#46 2.057	.0810"	2"	1/2"	.375"	4	13.56	12.97	12.38	11.79
95165	.0820	#45 2.083	.0820"	2"	1/2"	.375"	4	13.56	12.97	12.38	11.79

EDP#	d_1 † Diameter		d_2 Shank Diameter	l_1 Overall Length	l_2 Flute Length	l_3 Neck Length	Number Flutes	1-11	12-24	25-49	50-100
	Decimal	Metric									
95168	.0830	2.108	.0830"	2"	1/2"	.375"	4	13.56	12.97	12.38	11.79
95171	.0840	2.134	.0840"	2"	1/2"	.375"	4	13.56	12.97	12.38	11.79
95174	.0850	2.159	.0850"	2"	1/2"	.375"	4	13.56	12.97	12.38	11.79
95177	.0860 #44	2.184	.0860"	2"	1/2"	.375"	4	13.56	12.97	12.38	11.79
95180	.0870	2.210	.0870"	2"	1/2"	.375"	4	13.56	12.97	12.38	11.79
95183	.0880	2.235	.0880"	2"	1/2"	.375"	4	13.56	12.97	12.38	11.79
95186	.0890 #43	2.261	.0890"	2"	1/2"	.375"	4	13.56	12.97	12.38	11.79
95189	.0900	2.286	.0900"	2"	1/2"	.375"	4	13.56	12.97	12.38	11.79
95192	.0910	2.311	.0910"	2"	1/2"	.375"	4	13.56	12.97	12.38	11.79
95195	.0915	2.324	.0915"	2"	1/2"	.375"	4	13.56	12.97	12.38	11.79
95198	.0920	2.337	.0920"	2"	1/2"	.375"	4	13.56	12.97	12.38	11.79
95201	.0925	2.350	.0925"	2"	1/2"	.375"	4	13.56	12.97	12.38	11.79
95204	.0930	2.362	.0930"	2"	1/2"	.375"	4	13.56	12.97	12.38	11.79
95207	.0935 #42	2.375	.0935"	2"	1/2"	.375"	4	13.56	12.97	12.38	11.79
95210	.0938 3/32"	2.383	.0938"	2"	1/2"	.375"	4	13.56	12.97	12.38	11.79
95213	.0940	2.388	.0940"	2"	1/2"	.375"	4	13.56	12.97	12.38	11.79
95216	.0945	2.400	.0945"	2"	1/2"	.375"	4	13.56	12.97	12.38	11.79
95219	.0950	2.413	.0950"	2"	1/2"	.375"	4	13.56	12.97	12.38	11.79
95222	.0960 #41	2.438	.0960"	2-1/4"	5/8"	.375"	4	15.25	14.59	13.92	13.26
95225	.0970	2.464	.0970"	2-1/4"	5/8"	.375"	4	15.25	14.59	13.92	13.26
95228	.0980 #40	2.489	.0980"	2-1/4"	5/8"	.375"	4	15.25	14.59	13.92	13.26
95231	.0984	2.500	.0984"	2-1/4"	5/8"	.375"	4	15.25	14.59	13.92	13.26
95234	.0990	2.515	.0990"	2-1/4"	5/8"	.500"	4	15.25	14.59	13.92	13.26
95237	.0995 #39	2.527	.0995"	2-1/4"	5/8"	.500"	4	15.25	14.59	13.92	13.26
95240	.1000	2.540	.1000"	2-1/4"	5/8"	.500"	4	15.25	14.59	13.92	13.26
95243	.1010	2.565	.1010"	2-1/4"	5/8"	.500"	4	15.25	14.59	13.92	13.26
95246	.1015 #38	2.578	.1015"	2-1/4"	5/8"	.500"	4	15.25	14.59	13.92	13.26
95249	.1020	2.591	.1020"	2-1/4"	5/8"	.500"	4	15.25	14.59	13.92	13.26
95252	.1030	2.616	.1030"	2-1/4"	5/8"	.500"	4	15.25	14.59	13.92	13.26
95255	.1040 #37	2.642	.1040"	2-1/4"	5/8"	.500"	4	15.25	14.59	13.92	13.26
95258	.1050	2.667	.1050"	2-1/4"	5/8"	.500"	4	15.25	14.59	13.92	13.26
95261	.1060	2.692	.1060"	2-1/4"	5/8"	.500"	4	15.25	14.59	13.92	13.26
95264	.1065 #36	2.705	.1065"	2-1/4"	5/8"	.500"	4	15.25	14.59	13.92	13.26
95267	.1070	2.718	.1070"	2-1/4"	5/8"	.500"	4	15.25	14.59	13.92	13.26
95270	.1080	2.743	.1080"	2-1/4"	5/8"	.500"	4	15.25	14.59	13.92	13.26
95273	.1090	2.769	.1090"	2-1/4"	5/8"	.500"	4	15.25	14.59	13.92	13.26
95276	.1094 7/64"	2.779	.1094"	2-1/4"	5/8"	.500"	4	15.25	14.59	13.92	13.26
95279	.1100 #35	2.794	.1100"	2-1/4"	5/8"	.500"	4	15.36	14.70	14.03	13.36
95282	.1110 #34	2.819	.1110"	2-1/4"	5/8"	.500"	4	15.36	14.70	14.03	13.36
95285	.1120	2.845	.1120"	2-1/4"	5/8"	.500"	4	15.36	14.70	14.03	13.36
95288	.1130 #33	2.870	.1130"	2-1/4"	5/8"	.500"	4	15.36	14.70	14.03	13.36
95291	.1140	2.896	.1140"	2-1/4"	5/8"	.500"	4	15.36	14.70	14.03	13.36
95294	.1150	2.921	.1150"	2-1/4"	5/8"	.500"	4	15.36	14.70	14.03	13.36
95297	.1160 #32	2.946	.1160"	2-1/4"	5/8"	.500"	4	15.36	14.70	14.03	13.36
95300	.1170	2.972	.1170"	2-1/4"	5/8"	.500"	4	15.36	14.70	14.03	13.36
95303	.1180	2.997	.1180"	2-1/4"	5/8"	.500"	4	15.36	14.70	14.03	13.36
95306	.1181	3.000	.1181"	2-1/4"	5/8"	.500"	4	15.36	14.70	14.03	13.36
95309	.1190	3.023	.1190"	2-1/4"	5/8"	.500"	4	15.36	14.70	14.03	13.36

continued →

4100 (continued)

.1200" - .1550"
(3.048mm - 3.937mm)

REAMERS

EDP#	$d1$ †		$d2$ Shank Diameter	$l1$ Overall Length	$l2$ Flute Length	$l3$ Neck Length	Number Flutes	1-11	12-24	25-49	50-100	
	Decimal	Diameter Metric										
95312	.1200	#31	3.048	.1200"	2-1/4"	5/8"	.500"	4	15.36	14.70	14.03	13.36
95315	.1210		3.073	.1210"	2-1/4"	5/8"	.500"	4	15.36	14.70	14.03	13.36
95318	.1220		3.099	.1220"	2-1/4"	5/8"	.500"	4	15.36	14.70	14.03	13.36
95321	.1230		3.124	.1230"	2-1/4"	5/8"	.500"	4	15.36	14.70	14.03	13.36
95324	.1235		3.137	.1235"	2-1/4"	5/8"	.500"	4	15.36	14.70	14.03	13.36
95327	.1240		3.150	.1240"	2-1/4"	5/8"	.500"	4	15.36	14.70	14.03	13.36
95330	.1245		3.162	.1245"	2-1/4"	5/8"	.500"	4	15.36	14.70	14.03	13.36
95333	.1248		3.170	.1248"	2-1/4"	5/8"	.500"	4	15.36	14.70	14.03	13.36
95336	.1250	1/8"	3.175	.1250"	2-1/4"	5/8"	.500"	4	15.36	14.70	14.03	13.36
95339	.1255		3.188	.1255"	2-1/4"	5/8"	.500"	4	15.99	15.29	14.60	13.90
95342	.1260		3.200	.1260"	2-1/4"	5/8"	.500"	4	15.99	15.29	14.60	13.90
95345	.1265		3.213	.1265"	2-1/4"	5/8"	.500"	4	15.99	15.29	14.60	13.90
95348	.1270		3.226	.1270"	2-1/4"	5/8"	.500"	4	15.99	15.29	14.60	13.90
95351	.1275		3.239	.1275"	2-1/4"	5/8"	.500"	4	15.99	15.29	14.60	13.90
95354	.1280		3.251	.1280"	2-1/4"	5/8"	.500"	4	15.99	15.29	14.60	13.90
95357	.1285	#30	3.264	.1285"	2-1/4"	5/8"	.500"	4	15.99	15.29	14.60	13.90
95360	.1290		3.277	.1290"	2-1/4"	5/8"	.500"	4	15.99	15.29	14.60	13.90
95363	.1300		3.302	.1300"	2-1/4"	5/8"	.500"	4	15.99	15.29	14.60	13.90
95366	.1310		3.327	.1310"	2-1/2"	3/4"	.500"	4	17.74	16.97	16.20	15.43
95369	.1320		3.353	.1320"	2-1/2"	3/4"	.500"	4	17.74	16.97	16.20	15.43
95372	.1330		3.378	.1330"	2-1/2"	3/4"	.500"	4	17.74	16.97	16.20	15.43
95375	.1340		3.404	.1340"	2-1/2"	3/4"	.500"	4	17.74	16.97	16.20	15.43
95378	.1350		3.429	.1350"	2-1/2"	3/4"	.500"	4	17.74	16.97	16.20	15.43
95381	.1360	#29	3.454	.1360"	2-1/2"	3/4"	.500"	4	17.74	16.97	16.20	15.43
95384	.1370		3.480	.1370"	2-1/2"	3/4"	.500"	4	17.74	16.97	16.20	15.43
95387	.1378		3.500	.1378"	2-1/2"	3/4"	.500"	4	17.74	16.97	16.20	15.43
95390	.1380		3.505	.1380"	2-1/2"	3/4"	.500"	4	17.74	16.97	16.20	15.43
95393	.1390		3.531	.1390"	2-1/2"	3/4"	.500"	4	17.74	16.97	16.20	15.43
95396	.1400		3.556	.1400"	2-1/2"	3/4"	.500"	4	17.74	16.97	16.20	15.43
95399	.1405	#28	3.569	.1405"	2-1/2"	3/4"	.500"	4	17.74	16.97	16.20	15.43
95402	.1406	9/64"	3.571	.1406"	2-1/2"	3/4"	.500"	4	17.74	16.97	16.20	15.43
95405	.1410		3.581	.1410"	2-1/2"	3/4"	.500"	4	19.21	18.37	17.54	16.70
95408	.1420		3.607	.1420"	2-1/2"	3/4"	.500"	4	19.21	18.37	17.54	16.70
95411	.1430		3.632	.1430"	2-1/2"	3/4"	.500"	4	19.21	18.37	17.54	16.70
95414	.1440	#27	3.658	.1440"	2-1/2"	3/4"	.500"	4	19.21	18.37	17.54	16.70
95417	.1450		3.683	.1450"	2-1/2"	3/4"	.500"	4	19.21	18.37	17.54	16.70
95420	.1460		3.708	.1460"	2-1/2"	3/4"	.500"	4	19.21	18.37	17.54	16.70
95423	.1470	#26	3.734	.1470"	2-1/2"	3/4"	.500"	4	19.21	18.37	17.54	16.70
95426	.1480		3.759	.1480"	2-1/2"	3/4"	.500"	4	19.21	18.37	17.54	16.70
95429	.1490		3.785	.1490"	2-1/2"	3/4"	.500"	4	19.21	18.37	17.54	16.70
95432	.1495	#25	3.797	.1495"	2-1/2"	3/4"	.500"	4	19.21	18.37	17.54	16.70
95435	.1500		3.810	.1500"	2-1/2"	3/4"	.500"	4	19.21	18.37	17.54	16.70
95438	.1510		3.835	.1510"	2-1/2"	3/4"	.500"	4	19.21	18.37	17.54	16.70
95441	.1520	#24	3.861	.1520"	2-1/2"	3/4"	.500"	4	19.21	18.37	17.54	16.70
95444	.1530		3.886	.1530"	2-1/2"	3/4"	.500"	4	19.21	18.37	17.54	16.70
95447	.1540	#23	3.912	.1540"	2-1/2"	3/4"	.500"	4	19.21	18.37	17.54	16.70
95450	.1545		3.924	.1545"	2-1/2"	3/4"	.500"	4	19.21	18.37	17.54	16.70
95453	.1550		3.937	.1550"	2-1/2"	3/4"	.500"	4	19.21	18.37	17.54	16.70

EDP#	d_1 † Diameter		d_2 Shank Diameter	l_1 Overall Length	l_2 Flute Length	l_3 Neck Length	Number Flutes	1-11	12-24	25-49	50-100	
	Decimal	Metric										
95456	.1555		3.950	.1555"	2-1/2"	3/4"	.500"	4	19.21	18.37	17.54	16.70
95459	.1560		3.962	.1560"	2-1/2"	3/4"	.500"	4	19.21	18.37	17.54	16.70
95462	.1562	5/32"	3.967	.1562"	2-1/2"	3/4"	.500"	4	19.21	18.37	17.54	16.70
95465	.1565		3.975	.1565"	2-1/2"	3/4"	.500"	4	19.21	18.37	17.54	16.70
95468	.1570	#22	3.988	.1570"	2-1/2"	3/4"	.500"	4	21.36	20.43	19.50	18.57
95471	.1575		4.000	.1575"	2-1/2"	3/4"	.500"	4	21.36	20.43	19.50	18.57
95474	.1580		4.013	.1580"	2-1/2"	3/4"	.500"	4	21.36	20.43	19.50	18.57
95477	.1590	#21	4.039	.1590"	2-1/2"	3/4"	.500"	4	21.36	20.43	19.50	18.57
95480	.1600		4.064	.1600"	2-3/4"	7/8"	.625"	4	21.36	20.43	19.50	18.57
95483	.1610	#20	4.089	.1610"	2-3/4"	7/8"	.625"	4	21.36	20.43	19.50	18.57
95486	.1620		4.115	.1620"	2-3/4"	7/8"	.625"	4	21.36	20.43	19.50	18.57
95489	.1630		4.140	.1630"	2-3/4"	7/8"	.625"	4	21.36	20.43	19.50	18.57
95492	.1640		4.166	.1640"	2-3/4"	7/8"	.625"	4	21.36	20.43	19.50	18.57
95495	.1650		4.191	.1650"	2-3/4"	7/8"	.625"	4	21.36	20.43	19.50	18.57
95498	.1660	#19	4.216	.1660"	2-3/4"	7/8"	.625"	4	21.36	20.43	19.50	18.57
95501	.1670		4.242	.1670"	2-3/4"	7/8"	.625"	4	21.36	20.43	19.50	18.57
95504	.1680		4.267	.1680"	2-3/4"	7/8"	.625"	4	21.36	20.43	19.50	18.57
95507	.1690		4.293	.1690"	2-3/4"	7/8"	.625"	4	21.36	20.43	19.50	18.57
95510	.1695	#18	4.305	.1695"	2-3/4"	7/8"	.625"	4	21.36	20.43	19.50	18.57
95513	.1700		4.318	.1700"	2-3/4"	7/8"	.625"	4	21.36	20.43	19.50	18.57
95516	.1710		4.343	.1710"	2-3/4"	7/8"	.625"	4	21.36	20.43	19.50	18.57
95519	.1719	11/64"	4.366	.1719"	2-3/4"	7/8"	.625"	4	21.36	20.43	19.50	18.57
95522	.1720		4.369	.1720"	2-3/4"	7/8"	.625"	4	21.36	20.43	19.50	18.57
95525	.1730	#17	4.394	.1730"	2-3/4"	7/8"	.625"	4	22.22	21.25	20.29	19.32
95528	.1740		4.420	.1740"	2-3/4"	7/8"	.625"	4	22.22	21.25	20.29	19.32
95531	.1750		4.445	.1750"	2-3/4"	7/8"	.625"	4	22.22	21.25	20.29	19.32
95534	.1760		4.470	.1760"	2-3/4"	7/8"	.625"	4	22.22	21.25	20.29	19.32
95537	.1770	#16	4.496	.1770"	2-3/4"	7/8"	.625"	4	22.22	21.25	20.29	19.32
95540	.1772		4.500	.1772"	2-3/4"	7/8"	.625"	4	22.22	21.25	20.29	19.32
95543	.1780		4.521	.1780"	2-3/4"	7/8"	.625"	4	22.22	21.25	20.29	19.32
95546	.1790		4.547	.1790"	2-3/4"	7/8"	.625"	4	22.22	21.25	20.29	19.32
95549	.1800	#15	4.572	.1800"	2-3/4"	7/8"	.625"	4	22.22	21.25	20.29	19.32
95552	.1810		4.597	.1810"	2-3/4"	7/8"	.625"	4	22.22	21.25	20.29	19.32
95555	.1820	#14	4.623	.1820"	2-3/4"	7/8"	.625"	4	22.22	21.25	20.29	19.32
95558	.1830		4.648	.1830"	2-3/4"	7/8"	.625"	4	22.22	21.25	20.29	19.32
95561	.1840		4.674	.1840"	2-3/4"	7/8"	.625"	4	22.22	21.25	20.29	19.32
95564	.1850	#13	4.699	.1850"	2-3/4"	7/8"	.625"	4	22.22	21.25	20.29	19.32
95567	.1855		4.712	.1855"	2-3/4"	7/8"	.625"	4	22.22	21.25	20.29	19.32
95570	.1860		4.724	.1860"	2-3/4"	7/8"	.625"	4	22.22	21.25	20.29	19.32
95573	.1865		4.737	.1865"	2-3/4"	7/8"	.625"	4	22.22	21.25	20.29	19.32
95576	.1870		4.750	.1870"	2-3/4"	7/8"	.625"	4	22.22	21.25	20.29	19.32
95577	.1873		4.757	.1873"	2-3/4"	7/8"	.625"	4	22.22	21.25	20.29	19.32
95579	.1875	3/16"	4.763	.1875"	2-3/4"	7/8"	.625"	4	22.22	21.25	20.29	19.32
95582	.1880		4.775	.1880"	2-3/4"	7/8"	.625"	4	22.69	21.70	20.72	19.73
95585	.1885		4.788	.1885"	2-3/4"	7/8"	.625"	4	22.69	21.70	20.72	19.73
95588	.1890	#12	4.801	.1890"	2-3/4"	7/8"	.625"	4	22.69	21.70	20.72	19.73
95591	.1900		4.826	.1900"	2-3/4"	7/8"	.625"	4	22.69	21.70	20.72	19.73
95594	.1910	#11	4.851	.1910"	2-3/4"	7/8"	.625"	4	22.69	21.70	20.72	19.73

continued →

4100 (continued)

.1920" - .2330"
(4.877mm - 5.918mm)

REAMERS

EDP#	d_1 † Diameter		d_2 Shank Diameter	l_1 Overall Length	l_2 Flute Length	l_3 Neck Length	Number Flutes	1-11	12-24	25-49	50-100
	Decimal	Metric									
95597	.1920	4.877	.1920"	2-3/4"	7/8"	.625"	4	22.69	21.70	20.72	19.73
95600	.1930	4.902	.1930"	2-3/4"	7/8"	.625"	4	22.69	21.70	20.72	19.73
95603	.1935	#10 4.915	.1935"	2-3/4"	7/8"	.625"	4	22.69	21.70	20.72	19.73
95606	.1940	4.928	.1940"	2-3/4"	7/8"	.625"	4	22.69	21.70	20.72	19.73
95609	.1950	4.953	.1950"	2-3/4"	7/8"	.625"	4	22.69	21.70	20.72	19.73
95612	.1960	#9 4.978	.1960"	3"	1"	.625"	4	25.66	24.54	23.43	22.31
95615	.1969	5.000	.1969"	3"	1"	.625"	4	25.66	24.54	23.43	22.31
95618	.1970	5.004	.1970"	3"	1"	.625"	4	25.66	24.54	23.43	22.31
95621	.1980	5.029	.1980"	3"	1"	.625"	4	25.66	24.54	23.43	22.31
95624	.1990	#8 5.055	.1990"	3"	1"	.625"	4	25.66	24.54	23.43	22.31
95627	.2000	5.080	.2000"	3"	1"	.625"	4	25.66	24.54	23.43	22.31
95630	.2010	#7 5.105	.2010"	3"	1"	.625"	4	25.66	24.54	23.43	22.31
95633	.2020	5.131	.2020"	3"	1"	.625"	4	25.66	24.54	23.43	22.31
95636	.2030	5.156	.2030"	3"	1"	.625"	4	25.66	24.54	23.43	22.31
95639	.2031	13/64" 5.159	.2031"	3"	1"	.625"	4	25.66	24.54	23.43	22.31
95642	.2040	#6 5.182	.2040"	3"	1"	.625"	4	25.66	24.54	23.43	22.31
95645	.2050	5.207	.2050"	3"	1"	.625"	4	25.66	24.54	23.43	22.31
95648	.2055	#5 5.220	.2055"	3"	1"	.625"	4	25.66	24.54	23.43	22.31
95651	.2060	5.232	.2060"	3"	1"	.625"	4	25.66	24.54	23.43	22.31
95654	.2070	5.258	.2070"	3"	1"	.625"	4	25.66	24.54	23.43	22.31
95657	.2080	5.283	.2080"	3"	1"	.625"	4	25.66	24.54	23.43	22.31
95660	.2090	#4 5.309	.2090"	3"	1"	.625"	4	25.66	24.54	23.43	22.31
95663	.2100	5.334	.2100"	3"	1"	.625"	4	25.66	24.54	23.43	22.31
95666	.2110	5.359	.2110"	3"	1"	.625"	4	25.66	24.54	23.43	22.31
95669	.2120	5.385	.2120"	3"	1"	.625"	4	25.66	24.54	23.43	22.31
95672	.2130	#3 5.410	.2130"	3"	1"	.625"	4	25.66	24.54	23.43	22.31
95675	.2140	5.436	.2140"	3"	1"	.625"	4	25.66	24.54	23.43	22.31
95678	.2150	5.461	.2150"	3"	1"	.625"	4	25.66	24.54	23.43	22.31
95681	.2160	5.486	.2160"	3"	1"	.625"	4	25.66	24.54	23.43	22.31
95684	.2165	5.500	.2165"	3"	1"	.625"	4	25.66	24.54	23.43	22.31
95687	.2170	5.512	.2170"	3"	1"	.625"	4	25.66	24.54	23.43	22.31
95690	.2180	5.537	.2180"	3"	1"	.625"	4	25.66	24.54	23.43	22.31
95693	.2188	7/32" 5.558	.2188"	3"	1"	.625"	4	25.66	24.54	23.43	22.31
95696	.2190	5.563	.2190"	3"	1"	.625"	4	25.66	24.54	23.43	22.31
95699	.2200	5.588	.2200"	3"	1"	.625"	4	29.95	28.64	27.34	26.04
95702	.2210	#2 5.613	.2210"	3"	1"	.625"	4	29.95	28.64	27.34	26.04
95705	.2220	5.639	.2220"	3"	1"	.625"	4	29.95	28.64	27.34	26.04
95708	.2230	5.664	.2230"	3"	1"	.625"	4	29.95	28.64	27.34	26.04
95711	.2240	5.690	.2240"	3"	1"	.625"	4	29.95	28.64	27.34	26.04
95714	.2250	5.715	.2250"	3"	1"	.625"	4	29.95	28.64	27.34	26.04
95717	.2260	5.740	.2260"	3"	1"	.625"	4	29.95	28.64	27.34	26.04
95720	.2270	5.766	.2270"	3"	1"	.625"	4	29.95	28.64	27.34	26.04
95723	.2280	#1 5.791	.2280"	3"	1"	.625"	4	29.95	28.64	27.34	26.04
95726	.2290	5.817	.2290"	3"	1"	.625"	4	29.95	28.64	27.34	26.04
95729	.2300	5.842	.2300"	3"	1"	.625"	4	29.95	28.64	27.34	26.04
95732	.2310	5.867	.2310"	3"	1"	.625"	4	29.95	28.64	27.34	26.04
95735	.2320	5.893	.2320"	3"	1"	.625"	4	29.95	28.64	27.34	26.04
95738	.2330	5.918	.2330"	3"	1"	.625"	4	29.95	28.64	27.34	26.04

EDP#	d_1 † Diameter		d_2 Shank Diameter	l_1 Overall Length	l_2 Flute Length	l_3 Neck Length	Number Flutes	1-11	12-24	25-49	50-100	
	Decimal	Metric										
95741	.2340	A	5.944	.2340"	3"	1"	.625"	4	29.95	28.64	27.34	26.04
95744	.2344	15/64"	5.954	.2344"	3"	1"	.625"	4	29.95	28.64	27.34	26.04
95747	.2350		5.969	.2350"	3"	1"	.625"	4	31.06	29.71	28.36	27.01
95750	.2360		5.994	.2360"	3"	1"	.625"	4	31.06	29.71	28.36	27.01
95753	.2362		6.000	.2362"	3"	1"	.625"	4	31.06	29.71	28.36	27.01
95756	.2370		6.020	.2370"	3"	1"	.625"	4	31.06	29.71	28.36	27.01
95759	.2380	B	6.045	.2380"	3"	1"	.625"	4	31.06	29.71	28.36	27.01
95762	.2390		6.071	.2390"	3"	1"	.625"	4	31.06	29.71	28.36	27.01
95765	.2400		6.096	.2400"	3"	1"	.625"	4	31.06	29.71	28.36	27.01
95768	.2410		6.121	.2410"	3"	1"	.625"	4	31.06	29.71	28.36	27.01
95771	.2420	C	6.147	.2420"	3"	1"	.625"	4	31.06	29.71	28.36	27.01
95774	.2430		6.172	.2430"	3"	1"	.625"	4	31.06	29.71	28.36	27.01
95777	.2440		6.198	.2440"	3"	1"	.625"	4	31.06	29.71	28.36	27.01
95780	.2450		6.223	.2450"	3"	1"	.625"	4	31.06	29.71	28.36	27.01
95783	.2460	D	6.248	.2460"	3"	1"	.625"	4	31.06	29.71	28.36	27.01
95786	.2470		6.274	.2470"	3"	1"	.625"	4	31.06	29.71	28.36	27.01
95789	.2480		6.299	.2480"	3"	1"	.625"	4	31.06	29.71	28.36	27.01
95792	.2485		6.312	.2485"	3"	1"	.625"	4	31.06	29.71	28.36	27.01
95795	.2490		6.325	.2490"	3"	1"	.625"	4	31.06	29.71	28.36	27.01
95798	.2495		6.337	.2495"	3"	1"	.625"	4	31.06	29.71	28.36	27.01
95799	.2498		6.345	.2498"	3"	1"	.625"	4	31.06	29.71	28.36	27.01
95801	.2500	1/4" / E	6.350	.2500"	3"	1"	.625"	4	31.06	29.71	28.36	27.01
95802	.2502		6.355	.2502"	3"	1"	.625"	4	31.06	29.71	28.36	27.01
95804	.2505		6.363	.2505"	3"	1"	.625"	4	31.06	29.71	28.36	27.01
95807	.2510		6.375	.2510"	3"	1"	.625"	4	31.06	29.71	28.36	27.01
95810	.2515		6.388	.2515"	3"	1"	.625"	4	31.06	29.71	28.36	27.01
95813	.2520		6.401	.2520"	3"	1"	.625"	4	31.06	29.71	28.36	27.01
95816	.2530		6.426	.2530"	3"	1"	.625"	4	31.06	29.71	28.36	27.01
95819	.2540		6.452	.2540"	3"	1"	.625"	4	31.06	29.71	28.36	27.01
95822	.2550		6.477	.2550"	3-1/4"	1-1/8"	.625"	6	35.80	34.24	32.69	31.13
95825	.2559		6.500	.2559"	3-1/4"	1-1/8"	.625"	6	35.80	34.24	32.69	31.13
95828	.2560		6.502	.2560"	3-1/4"	1-1/8"	.625"	6	35.80	34.24	32.69	31.13
95831	.2570	F	6.528	.2570"	3-1/4"	1-1/8"	.625"	6	35.80	34.24	32.69	31.13
95834	.2580		6.553	.2580"	3-1/4"	1-1/8"	.625"	6	35.80	34.24	32.69	31.13
95837	.2590		6.579	.2590"	3-1/4"	1-1/8"	.625"	6	35.80	34.24	32.69	31.13
95840	.2600		6.604	.2600"	3-1/4"	1-1/8"	.625"	6	35.80	34.24	32.69	31.13
95843	.2610	G	6.629	.2610"	3-1/4"	1-1/8"	.625"	6	35.80	34.24	32.69	31.13
95846	.2620		6.655	.2620"	3-1/4"	1-1/8"	.625"	6	35.80	34.24	32.69	31.13
95849	.2630		6.680	.2630"	3-1/4"	1-1/8"	.625"	6	35.80	34.24	32.69	31.13
95852	.2640		6.706	.2640"	3-1/4"	1-1/8"	.625"	6	35.80	34.24	32.69	31.13
95855	.2650		6.731	.2650"	3-1/4"	1-1/8"	.625"	6	35.80	34.24	32.69	31.13
95858	.2656	17/64"	6.746	.2656"	3-1/4"	1-1/8"	.625"	6	35.80	34.24	32.69	31.13
95861	.2660	H	6.756	.2660"	3-1/4"	1-1/8"	.625"	6	35.80	34.24	32.69	31.13
95864	.2670		6.782	.2670"	3-1/4"	1-1/8"	.625"	6	35.80	34.24	32.69	31.13
95867	.2680		6.807	.2680"	3-1/4"	1-1/8"	.625"	6	35.80	34.24	32.69	31.13
95870	.2690		6.833	.2690"	3-1/4"	1-1/8"	.625"	6	35.80	34.24	32.69	31.13
95873	.2700		6.858	.2700"	3-1/4"	1-1/8"	.625"	6	35.80	34.24	32.69	31.13
95876	.2710		6.883	.2710"	3-1/4"	1-1/8"	.625"	6	35.80	34.24	32.69	31.13

continued →

4100 (continued)

.2720" - .3123"
(6.960mm - 7.932mm)

REAMERS

EDP#	d_1 †		d_2 Shank Diameter	l_1 Overall Length	l_2 Flute Length	l_3 Neck Length	Number Flutes	1-11	12-24	25-49	50-100	
	Decimal	Diameter Metric										
95879	.2720	I	6.909	.2720"	3-1/4"	1-1/8"	.750"	6	36.16	34.58	33.01	31.44
95882	.2730		6.934	.2730"	3-1/4"	1-1/8"	.750"	6	36.16	34.58	33.01	31.44
95885	.2740		6.960	.2740"	3-1/4"	1-1/8"	.750"	6	36.16	34.58	33.01	31.44
95888	.2750		6.985	.2750"	3-1/4"	1-1/8"	.750"	6	36.16	34.58	33.01	31.44
95891	.2756		7.000	.2756"	3-1/4"	1-1/8"	.750"	6	36.16	34.58	33.01	31.44
95894	.2760		7.010	.2760"	3-1/4"	1-1/8"	.750"	6	36.16	34.58	33.01	31.44
95897	.2770	J	7.036	.2770"	3-1/4"	1-1/8"	.750"	6	36.16	34.58	33.01	31.44
95900	.2780		7.061	.2780"	3-1/4"	1-1/8"	.750"	6	36.16	34.58	33.01	31.44
95903	.2790		7.087	.2790"	3-1/4"	1-1/8"	.750"	6	36.16	34.58	33.01	31.44
95906	.2800		7.112	.2800"	3-1/4"	1-1/8"	.750"	6	36.16	34.58	33.01	31.44
95909	.2810	K	7.137	.2810"	3-1/4"	1-1/8"	.750"	6	36.16	34.58	33.01	31.44
95912	.2812	9/32"	7.142	.2812"	3-1/4"	1-1/8"	.750"	6	36.16	34.58	33.01	31.44
95915	.2820		7.163	.2820"	3-1/4"	1-1/8"	.750"	6	39.13	37.43	35.73	34.03
95918	.2830		7.188	.2830"	3-1/4"	1-1/8"	.750"	6	39.13	37.43	35.73	34.03
95921	.2840		7.214	.2840"	3-1/4"	1-1/8"	.750"	6	39.13	37.43	35.73	34.03
95924	.2850		7.239	.2850"	3-1/4"	1-1/8"	.750"	6	39.13	37.43	35.73	34.03
95927	.2860		7.264	.2860"	3-1/4"	1-1/8"	.750"	6	39.13	37.43	35.73	34.03
95930	.2870		7.290	.2870"	3-1/4"	1-1/8"	.750"	6	39.13	37.43	35.73	34.03
95933	.2880		7.315	.2880"	3-1/4"	1-1/8"	.750"	6	39.13	37.43	35.73	34.03
95936	.2890		7.341	.2890"	3-1/4"	1-1/8"	.750"	6	39.43	37.72	36.00	34.29
95939	.2900	L	7.366	.2900"	3-1/4"	1-1/8"	.750"	6	39.43	37.72	36.00	34.29
95942	.2910		7.391	.2910"	3-1/4"	1-1/8"	.750"	6	39.43	37.72	36.00	34.29
95945	.2920		7.417	.2920"	3-1/4"	1-1/8"	.750"	6	39.43	37.72	36.00	34.29
95948	.2930		7.442	.2930"	3-1/4"	1-1/8"	.750"	6	39.43	37.72	36.00	34.29
95951	.2940		7.468	.2940"	3-1/4"	1-1/8"	.750"	6	39.43	37.72	36.00	34.29
95954	.2950	M	7.493	.2950"	3-1/4"	1-1/8"	.750"	6	39.43	37.72	36.00	34.29
95957	.2953		7.500	.2953"	3-1/4"	1-1/8"	.750"	6	39.43	37.72	36.00	34.29
95960	.2960		7.518	.2960"	3-1/4"	1-1/8"	.750"	6	39.43	37.72	36.00	34.29
95963	.2969	19/64"	7.541	.2969"	3-1/4"	1-1/8"	.750"	6	39.43	37.72	36.00	34.29
95966	.2970		7.544	.2970"	3-1/4"	1-1/8"	.750"	6	39.43	37.72	36.00	34.29
95969	.2980		7.569	.2980"	3-1/4"	1-1/8"	.750"	6	39.43	37.72	36.00	34.29
95972	.2990		7.595	.2990"	3-1/4"	1-1/8"	.750"	6	39.43	37.72	36.00	34.29
95975	.3000		7.620	.3000"	3-1/4"	1-1/8"	.750"	6	39.43	37.72	36.00	34.29
95978	.3010		7.645	.3010"	3-1/4"	1-1/8"	.750"	6	39.43	37.72	36.00	34.29
95981	.3020	N	7.671	.3020"	3-1/4"	1-1/8"	.750"	6	39.43	37.72	36.00	34.29
95984	.3030		7.696	.3030"	3-1/4"	1-1/8"	.750"	6	39.43	37.72	36.00	34.29
95987	.3040		7.722	.3040"	3-1/4"	1-1/8"	.750"	6	39.43	37.72	36.00	34.29
95990	.3050		7.747	.3050"	3-1/4"	1-1/8"	.750"	6	39.43	37.72	36.00	34.29
95993	.3060		7.772	.3060"	3-1/4"	1-1/8"	.750"	6	39.43	37.72	36.00	34.29
95996	.3070		7.798	.3070"	3-1/4"	1-1/8"	.750"	6	39.43	37.72	36.00	34.29
95999	.3080		7.823	.3080"	3-1/4"	1-1/8"	.750"	6	39.43	37.72	36.00	34.29
96002	.3090		7.849	.3090"	3-1/4"	1-1/8"	.750"	6	39.43	37.72	36.00	34.29
96005	.3100		7.874	.3100"	3-1/4"	1-1/8"	.750"	6	39.43	37.72	36.00	34.29
96006	.3105		7.887	.3105"	3-1/4"	1-1/8"	.750"	6	39.43	37.72	36.00	34.29
96008	.3110		7.899	.3110"	3-1/4"	1-1/8"	.750"	6	39.43	37.72	36.00	34.29
96011	.3115		7.912	.3115"	3-1/4"	1-1/8"	.750"	6	39.43	37.72	36.00	34.29
96014	.3120		7.925	.3120"	3-1/4"	1-1/8"	.750"	6	39.43	37.72	36.00	34.29
96015	.3123		7.932	.3123"	3-1/4"	1-1/8"	.750"	6	39.43	37.72	36.00	34.29

EDP#	d_1 † Diameter		d_2 Shank Diameter	l_1 Overall Length	l_2 Flute Length	l_3 Neck Length	Number Flutes	1-11	12-24	25-49	50-100	
	Decimal	Metric										
96017	.3125	5/16"	7.938	.3125"	3-1/4"	1-1/8"	.750"	6	39.43	37.72	36.00	34.29
96021	.3130		7.950	.3130"	3-1/4"	1-1/8"	.750"	6	39.43	37.72	36.00	34.29
96023	.3135		7.963	.3135"	3-1/4"	1-1/8"	.750"	6	39.43	37.72	36.00	34.29
96026	.3140		7.976	.3140"	3-1/4"	1-1/8"	.750"	6	39.43	37.72	36.00	34.29
96029	.3150		8.000	.3150"	3-1/4"	1-1/8"	.750"	6	39.43	37.72	36.00	34.29
96032	.3160	O	8.026	.3160"	3-1/4"	1-1/8"	.750"	6	39.43	37.72	36.00	34.29
96035	.3170		8.052	.3170"	3-1/4"	1-1/8"	.750"	6	39.43	37.72	36.00	34.29
96038	.3180		8.077	.3180"	3-1/4"	1-1/8"	.750"	6	39.43	37.72	36.00	34.29
96041	.3190		8.103	.3190"	3-1/2"	1-1/4"	.750"	6	48.59	46.48	44.36	42.25
96044	.3200		8.128	.3200"	3-1/2"	1-1/4"	.750"	6	48.59	46.48	44.36	42.25
96047	.3210		8.153	.3210"	3-1/2"	1-1/4"	.750"	6	48.59	46.48	44.36	42.25
96050	.3220		8.179	.3220"	3-1/2"	1-1/4"	.750"	6	48.59	46.48	44.36	42.25
96053	.3230	P	8.204	.3230"	3-1/2"	1-1/4"	.750"	6	48.59	46.48	44.36	42.25
96056	.3240		8.230	.3240"	3-1/2"	1-1/4"	.750"	6	48.59	46.48	44.36	42.25
96059	.3250		8.255	.3250"	3-1/2"	1-1/4"	.750"	6	48.59	46.48	44.36	42.25
96062	.3260		8.280	.3260"	3-1/2"	1-1/4"	.750"	6	48.59	46.48	44.36	42.25
96065	.3270		8.306	.3270"	3-1/2"	1-1/4"	.750"	6	48.59	46.48	44.36	42.25
96068	.3280		8.331	.3280"	3-1/2"	1-1/4"	.750"	6	48.59	46.48	44.36	42.25
96071	.3281	21/64"	8.334	.3281"	3-1/2"	1-1/4"	.750"	6	48.59	46.48	44.36	42.25
96074	.3290		8.357	.3290"	3-1/2"	1-1/4"	.750"	6	48.59	46.48	44.36	42.25
96077	.3300		8.382	.3300"	3-1/2"	1-1/4"	.750"	6	48.59	46.48	44.36	42.25
96079	.3310		8.407	.3310"	3-1/2"	1-1/4"	.750"	6	48.59	46.48	44.36	42.25
96083	.3320	Q	8.433	.3320"	3-1/2"	1-1/4"	.750"	6	48.59	46.48	44.36	42.25
96086	.3330		8.458	.3330"	3-1/2"	1-1/4"	.750"	6	48.59	46.48	44.36	42.25
96089	.3340		8.484	.3340"	3-1/2"	1-1/4"	.750"	6	48.59	46.48	44.36	42.25
96092	.3346		8.500	.3346"	3-1/2"	1-1/4"	.750"	6	48.59	46.48	44.36	42.25
96095	.3350		8.509	.3350"	3-1/2"	1-1/4"	.750"	6	48.59	46.48	44.36	42.25
96098	.3360		8.534	.3360"	3-1/2"	1-1/4"	.750"	6	48.59	46.48	44.36	42.25
96101	.3370		8.560	.3370"	3-1/2"	1-1/4"	.750"	6	48.59	46.48	44.36	42.25
96104	.3380		8.585	.3380"	3-1/2"	1-1/4"	.750"	6	48.59	46.48	44.36	42.25
96107	.3390	R	8.611	.3390"	3-1/2"	1-1/4"	.750"	6	48.59	46.48	44.36	42.25
96110	.3400		8.636	.3400"	3-1/2"	1-1/4"	.750"	6	48.59	46.48	44.36	42.25
96113	.3410		8.661	.3410"	3-1/2"	1-1/4"	.750"	6	48.59	46.48	44.36	42.25
96116	.3420		8.687	.3420"	3-1/2"	1-1/4"	.750"	6	51.43	49.19	46.96	44.72
96119	.3430		8.712	.3430"	3-1/2"	1-1/4"	.750"	6	51.43	49.19	46.96	44.72
96122	.3438	11/32"	8.733	.3438"	3-1/2"	1-1/4"	.750"	6	51.43	49.19	46.96	44.72
96125	.3440		8.738	.3440"	3-1/2"	1-1/4"	.750"	6	51.43	49.19	46.96	44.72
96128	.3450		8.763	.3450"	3-1/2"	1-1/4"	.750"	6	51.43	49.19	46.96	44.72
96131	.3460		8.788	.3460"	3-1/2"	1-1/4"	.750"	6	51.43	49.19	46.96	44.72
96134	.3470		8.814	.3470"	3-1/2"	1-1/4"	.750"	6	51.43	49.19	46.96	44.72
96137	.3480	S	8.839	.3480"	3-1/2"	1-1/4"	.750"	6	51.43	49.19	46.96	44.72
96141	.3490		8.865	.3490"	3-1/2"	1-1/4"	.750"	6	51.43	49.19	46.96	44.72
96143	.3500		8.890	.3500"	3-1/2"	1-1/4"	.750"	6	51.43	49.19	46.96	44.72
96146	.3510		8.915	.3510"	3-1/2"	1-1/4"	.750"	6	51.43	49.19	46.96	44.72
96149	.3520		8.941	.3520"	3-1/2"	1-1/4"	.750"	6	51.43	49.19	46.96	44.72
96152	.3530		8.966	.3530"	3-1/2"	1-1/4"	.750"	6	51.43	49.19	46.96	44.72
96155	.3540		8.992	.3540"	3-1/2"	1-1/4"	.750"	6	51.43	49.19	46.96	44.72
96158	.3543		9.000	.3543"	3-1/2"	1-1/4"	.750"	6	51.43	49.19	46.96	44.72

continued →

4100 (continued)

.3550" - .3950"
(9.017mm - 10.033mm)

REAMERS

EDP#	d_1 † Diameter		d_2 Shank Diameter	l_1 Overall Length	l_2 Flute Length	l_3 Neck Length	Number Flutes	1-11	12-24	25-49	50-100
	Decimal	Metric									
96161	.3550	9.017	.3550"	3-1/2"	1-1/4"	.750"	6	51.43	49.19	46.96	44.72
96164	.3560	9.042	.3560"	3-1/2"	1-1/4"	.750"	6	51.43	49.19	46.96	44.72
96167	.3570	9.068	.3570"	3-1/2"	1-1/4"	.750"	6	51.43	49.19	46.96	44.72
96170	.3580	T 9.093	.3580"	3-1/2"	1-1/4"	.750"	6	51.43	49.19	46.96	44.72
96173	.3590	9.119	.3590"	3-1/2"	1-1/4"	.750"	6	51.43	49.19	46.96	44.72
96176	.3594	23/64" 9.129	.3594"	3-1/2"	1-1/4"	.750"	6	51.43	49.19	46.96	44.72
96179	.3600	9.144	.3600"	3-1/2"	1-1/4"	.750"	6	51.43	49.19	46.96	44.72
96182	.3610	9.169	.3610"	3-1/2"	1-1/4"	.750"	6	51.43	49.19	46.96	44.72
96185	.3620	9.195	.3620"	3-1/2"	1-1/4"	.750"	6	51.43	49.19	46.96	44.72
96188	.3630	9.220	.3630"	3-1/2"	1-1/4"	.750"	6	52.99	50.69	48.38	46.08
96191	.3640	9.246	.3640"	3-1/2"	1-1/4"	.750"	6	52.99	50.69	48.38	46.08
96194	.3650	9.271	.3650"	3-1/2"	1-1/4"	.750"	6	52.99	50.69	48.38	46.08
96197	.3660	9.296	.3660"	3-1/2"	1-1/4"	.750"	6	52.99	50.69	48.38	46.08
96199	.3670	9.322	.3670"	3-1/2"	1-1/4"	.750"	6	52.99	50.69	48.38	46.08
96203	.3680	U 9.347	.3680"	3-1/2"	1-1/4"	.750"	6	52.99	50.69	48.38	46.08
96206	.3690	9.373	.3690"	3-1/2"	1-1/4"	.750"	6	52.99	50.69	48.38	46.08
96209	.3700	9.398	.3700"	3-1/2"	1-1/4"	.750"	6	52.99	50.69	48.38	46.08
96212	.3710	9.423	.3710"	3-1/2"	1-1/4"	.750"	6	52.99	50.69	48.38	46.08
96215	.3720	9.449	.3720"	3-1/2"	1-1/4"	.750"	6	52.99	50.69	48.38	46.08
96218	.3730	9.474	.3730"	3-1/2"	1-1/4"	.750"	6	52.99	50.69	48.38	46.08
96221	.3740	9.500	.3740"	3-1/2"	1-1/4"	.750"	6	52.99	50.69	48.38	46.08
96224	.3745	9.512	.3745"	3-1/2"	1-1/4"	.750"	6	52.99	50.69	48.38	46.08
96225	.3748	9.520	.3748"	3-1/2"	1-1/4"	.750"	6	52.99	50.69	48.38	46.08
96227	.3750	3/8" 9.525	.3750"	3-1/2"	1-1/4"	.750"	6	52.99	50.69	48.38	46.08
96230	.3755	9.538	.3755"	3-1/2"	1-1/4"	.750"	6	52.99	50.69	48.38	46.08
96233	.3760	9.550	.3760"	3-1/2"	1-1/4"	.750"	6	52.99	50.69	48.38	46.08
96236	.3765	9.563	.3765"	3-1/2"	1-1/4"	.750"	6	52.99	50.69	48.38	46.08
96239	.3770	V 9.576	.3770"	3-1/2"	1-1/4"	.750"	6	52.99	50.69	48.38	46.08
96242	.3780	9.601	.3780"	3-1/2"	1-1/4"	.750"	6	62.15	59.44	56.74	54.04
96245	.3790	9.627	.3790"	3-1/2"	1-1/4"	.750"	6	62.15	59.44	56.74	54.04
96248	.3800	9.652	.3800"	3-1/2"	1-1/4"	.750"	6	62.15	59.44	56.74	54.04
96251	.3810	9.677	.3810"	3-1/2"	1-1/4"	.750"	6	62.15	59.44	56.74	54.04
96254	.3820	9.703	.3820"	3-1/2"	1-1/4"	.750"	6	62.15	59.44	56.74	54.04
96257	.3830	9.728	.3830"	3-1/2"	1-1/4"	.750"	6	62.15	59.44	56.74	54.04
96260	.3840	9.754	.3840"	3-1/2"	1-1/4"	.750"	6	62.15	59.44	56.74	54.04
96263	.3850	9.779	.3850"	3-1/2"	1-1/4"	.750"	6	62.15	59.44	56.74	54.04
96266	.3860	W 9.804	.3860"	3-1/2"	1-1/4"	.750"	6	62.15	59.44	56.74	54.04
96269	.3870	9.830	.3870"	3-1/2"	1-1/4"	.750"	6	62.15	59.44	56.74	54.04
96272	.3880	9.855	.3880"	3-1/2"	1-1/4"	.750"	6	62.15	59.44	56.74	54.04
96275	.3890	9.881	.3890"	3-1/2"	1-1/4"	.750"	6	62.15	59.44	56.74	54.04
96278	.3900	9.906	.3900"	3-1/2"	1-1/4"	.750"	6	62.15	59.44	56.74	54.04
96281	.3906	25/64" 9.921	.3906"	3-1/2"	1-1/4"	.750"	6	62.15	59.44	56.74	54.04
96284	.3910	9.931	.3910"	3-1/2"	1-1/4"	.750"	6	62.15	59.44	56.74	54.04
96287	.3920	9.957	.3920"	3-1/2"	1-1/4"	.750"	6	62.15	59.44	56.74	54.04
96290	.3930	9.982	.3930"	3-1/2"	1-1/4"	.750"	6	62.15	59.44	56.74	54.04
96293	.3937	10.000	.3937"	3-1/2"	1-1/4"	.750"	6	64.34	61.55	58.75	55.95
96296	.3940	10.008	.3940"	3-1/2"	1-1/4"	.750"	6	64.34	61.55	58.75	55.95
96299	.3950	10.033	.3950"	3-1/2"	1-1/4"	.750"	6	64.34	61.55	58.75	55.95

EDP#	d_1 † Diameter		d_2 Shank Diameter	l_1 Overall Length	l_2 Flute Length	l_3 Neck Length	Number Flutes	1-11	12-24	25-49	50-100
	Decimal	Metric									
96302	.3960	10.058	.3960"	3-1/2"	1-1/4"	.750"	6	64.34	61.55	58.75	55.95
96305	.3970	X 10.084	.3970"	3-1/2"	1-1/4"	.750"	6	64.34	61.55	58.75	55.95
96308	.3980	10.109	.3980"	3-1/2"	1-1/4"	.750"	6	64.34	61.55	58.75	55.95
96311	.3990	10.135	.3990"	3-1/2"	1-1/4"	.750"	6	64.34	61.55	58.75	55.95
96314	.4000	10.160	.4000"	3-1/2"	1-1/4"	.750"	6	64.34	61.55	58.75	55.95
96317	.4010	10.185	.4010"	3-1/2"	1-1/4"	.750"	6	64.34	61.55	58.75	55.95
96319	.4020	10.211	.4020"	3-1/2"	1-1/4"	.750"	6	64.34	61.55	58.75	55.95
96323	.4030	10.236	.4030"	3-1/2"	1-1/4"	.750"	6	64.34	61.55	58.75	55.95
96326	.4040	Y 10.262	.4040"	3-1/2"	1-1/4"	.750"	6	64.34	61.55	58.75	55.95
96329	.4050	10.287	.4050"	3-1/2"	1-1/4"	.750"	6	64.34	61.55	58.75	55.95
96332	.4060	10.312	.4060"	3-1/2"	1-1/4"	.750"	6	64.34	61.55	58.75	55.95
96335	.4062	13/32" 10.317	.4062"	3-1/2"	1-1/4"	.750"	6	64.34	61.55	58.75	55.95
96338	.4070	10.338	.4070"	3-1/2"	1-1/4"	.750"	6	64.34	61.55	58.75	55.95
96341	.4080	10.363	.4080"	3-1/2"	1-1/4"	.750"	6	64.34	61.55	58.75	55.95
96344	.4090	10.389	.4090"	3-1/2"	1-1/4"	.750"	6	64.34	61.55	58.75	55.95
96347	.4100	10.414	.4100"	3-1/2"	1-1/4"	.750"	6	64.34	61.55	58.75	55.95
96350	.4110	10.439	.4110"	3-1/2"	1-1/4"	.750"	6	66.60	63.70	60.81	57.91
96353	.4120	10.465	.4120"	3-1/2"	1-1/4"	.750"	6	66.60	63.70	60.81	57.91
96356	.4130	Z 10.490	.4130"	3-1/2"	1-1/4"	.750"	6	66.60	63.70	60.81	57.91
96359	.4134	10.500	.4134"	3-1/2"	1-1/4"	.750"	6	66.60	63.70	60.81	57.91
96362	.4140	10.516	.4140"	3-1/2"	1-1/4"	.750"	6	66.60	63.70	60.81	57.91
96365	.4150	10.541	.4150"	3-1/2"	1-1/4"	.750"	6	66.60	63.70	60.81	57.91
96366	.4160	10.566	.4160"	4"	1-3/8"	.750"	6	66.60	63.70	60.81	57.91
96367	.4170	10.592	.4170"	4"	1-3/8"	.750"	6	66.60	63.70	60.81	57.91
96368	.4180	10.617	.4180"	4"	1-3/8"	.750"	6	66.60	63.70	60.81	57.91
96369	.4190	10.643	.4190"	4"	1-3/8"	.750"	6	66.60	63.70	60.81	57.91
96371	.4200	10.668	.4200"	4"	1-3/8"	.750"	6	66.60	63.70	60.81	57.91
96374	.4210	10.693	.4210"	4"	1-3/8"	.750"	6	66.60	63.70	60.81	57.91
96377	.4219	27/64" 10.716	.4219"	4"	1-3/8"	.750"	6	66.60	63.70	60.81	57.91
96380	.4220	10.719	.4220"	4"	1-3/8"	.750"	6	66.60	63.70	60.81	57.91
96383	.4230	10.744	.4230"	4"	1-3/8"	.750"	6	66.60	63.70	60.81	57.91
96386	.4240	10.770	.4240"	4"	1-3/8"	.750"	6	66.60	63.70	60.81	57.91
96389	.4250	10.795	.4250"	4"	1-3/8"	.750"	6	66.60	63.70	60.81	57.91
96392	.4260	10.820	.4260"	4"	1-3/8"	.750"	6	66.60	63.70	60.81	57.91
96395	.4270	10.846	.4270"	4"	1-3/8"	.750"	6	66.60	63.70	60.81	57.91
96398	.4280	10.871	.4280"	4"	1-3/8"	.750"	6	66.60	63.70	60.81	57.91
96401	.4290	10.897	.4290"	4"	1-3/8"	.750"	6	66.60	63.70	60.81	57.91
96404	.4300	10.922	.4300"	4"	1-3/8"	.750"	6	66.60	63.70	60.81	57.91
96407	.4310	10.947	.4310"	4"	1-3/8"	.750"	6	66.60	63.70	60.81	57.91
96410	.4320	10.973	.4320"	4"	1-3/8"	.750"	6	66.60	63.70	60.81	57.91
96413	.4330	10.998	.4330"	4"	1-3/8"	.750"	6	66.60	63.70	60.81	57.91
96416	.4331	11.000	.4331"	4"	1-3/8"	.750"	6	66.60	63.70	60.81	57.91
96419	.4340	11.024	.4340"	4"	1-3/8"	.750"	6	66.60	63.70	60.81	57.91
96422	.4350	11.049	.4350"	4"	1-3/8"	.750"	6	66.60	63.70	60.81	57.91
96425	.4360	11.074	.4360"	4"	1-3/8"	.750"	6	66.60	63.70	60.81	57.91
96428	.4365	11.087	.4365"	4"	1-3/8"	.750"	6	66.60	63.70	60.81	57.91
96431	.4370	11.100	.4370"	4"	1-3/8"	.750"	6	66.60	63.70	60.81	57.91
96432	.4373	11.107	.4373"	4"	1-3/8"	.750"	6	66.60	63.70	60.81	57.91

continued →

4100 (continued)

.4375" - .4790"
(11.113mm - 12.167mm)

REAMERS

EDP#	d_1 † Diameter		d_2 Shank Diameter	l_1 Overall Length	l_2 Flute Length	l_3 Neck Length	Number Flutes	1-11	12-24	25-49	50-100	
	Decimal	Metric										
96434	.4375	7/16"	11.113	.4375"	4"	1-3/8"	.750"	6	66.60	63.70	60.81	57.91
96437	.4380		11.125	.4380"	4"	1-3/8"	.750"	6	71.39	68.29	65.18	62.08
96440	.4385		11.138	.4385"	4"	1-3/8"	.750"	6	71.39	68.29	65.18	62.08
96443	.4390		11.151	.4390"	4"	1-3/8"	.750"	6	71.39	68.29	65.18	62.08
96446	.4400		11.176	.4400"	4"	1-3/8"	.750"	6	71.39	68.29	65.18	62.08
96449	.4410		11.201	.4410"	4"	1-3/8"	.750"	6	71.39	68.29	65.18	62.08
96452	.4420		11.227	.4420"	4"	1-3/8"	.750"	6	71.39	68.29	65.18	62.08
96455	.4430		11.252	.4430"	4"	1-3/8"	.750"	6	71.39	68.29	65.18	62.08
96458	.4440		11.278	.4440"	4"	1-3/8"	.750"	6	71.39	68.29	65.18	62.08
96461	.4450		11.303	.4450"	4"	1-3/8"	.750"	6	71.39	68.29	65.18	62.08
96464	.4460		11.328	.4460"	4"	1-3/8"	.750"	6	71.39	68.29	65.18	62.08
96467	.4470		11.354	.4470"	4"	1-3/8"	.750"	6	71.39	68.29	65.18	62.08
96470	.4480		11.379	.4480"	4"	1-3/8"	.750"	6	71.39	68.29	65.18	62.08
96473	.4490		11.405	.4490"	4"	1-3/8"	.750"	6	71.39	68.29	65.18	62.08
96476	.4500		11.430	.4500"	4"	1-3/8"	.750"	6	71.39	68.29	65.18	62.08
96479	.4510		11.455	.4510"	4"	1-3/8"	.750"	6	71.39	68.29	65.18	62.08
96482	.4520		11.481	.4520"	4"	1-3/8"	.750"	6	71.39	68.29	65.18	62.08
96485	.4528		11.500	.4528"	4"	1-3/8"	.750"	6	71.39	68.29	65.18	62.08
96488	.4530		11.506	.4530"	4"	1-3/8"	.750"	6	71.39	68.29	65.18	62.08
96491	.4531	29/64"	11.509	.4531"	4"	1-3/8"	.750"	6	71.39	68.29	65.18	62.08
96494	.4540		11.532	.4540"	4"	1-3/8"	.750"	6	71.39	68.29	65.18	62.08
96497	.4550		11.557	.4550"	4"	1-3/8"	.750"	6	71.39	68.29	65.18	62.08
96500	.4560		11.582	.4560"	4"	1-3/8"	.750"	6	71.39	68.29	65.18	62.08
96503	.4570		11.608	.4570"	4"	1-3/8"	.750"	6	71.39	68.29	65.18	62.08
96506	.4580		11.633	.4580"	4"	1-3/8"	.750"	6	71.39	68.29	65.18	62.08
96509	.4590		11.659	.4590"	4"	1-3/8"	.750"	6	71.39	68.29	65.18	62.08
96512	.4600		11.684	.4600"	4"	1-3/8"	.750"	6	71.39	68.29	65.18	62.08
96515	.4610		11.709	.4610"	4"	1-3/8"	.750"	6	73.53	70.33	67.14	63.94
96518	.4620		11.735	.4620"	4"	1-3/8"	.750"	6	73.53	70.33	67.14	63.94
96521	.4630		11.760	.4630"	4"	1-3/8"	.750"	6	73.53	70.33	67.14	63.94
96524	.4640		11.786	.4640"	4"	1-3/8"	.750"	6	73.53	70.33	67.14	63.94
96527	.4650		11.811	.4650"	4"	1-3/8"	.750"	6	73.53	70.33	67.14	63.94
96530	.4660		11.836	.4660"	4"	1-3/8"	.750"	6	73.53	70.33	67.14	63.94
96533	.4670		11.862	.4670"	4"	1-3/8"	.750"	6	73.53	70.33	67.14	63.94
96536	.4680		11.887	.4680"	4"	1-3/8"	.750"	6	73.53	70.33	67.14	63.94
96539	.4688	15/32"	11.908	.4688"	4"	1-3/8"	.750"	6	73.53	70.33	67.14	63.94
96542	.4690		11.913	.4690"	4"	1-3/8"	.750"	6	73.53	70.33	67.14	63.94
96545	.4700		11.938	.4700"	4"	1-1/2"	.750"	6	73.53	70.33	67.14	63.94
96548	.4710		11.963	.4710"	4"	1-1/2"	.750"	6	73.53	70.33	67.14	63.94
96551	.4720		11.989	.4720"	4"	1-1/2"	.750"	6	73.53	70.33	67.14	63.94
96554	.4724		12.000	.4724"	4"	1-1/2"	.750"	6	73.53	70.33	67.14	63.94
96557	.4730		12.014	.4730"	4"	1-1/2"	.750"	6	73.53	70.33	67.14	63.94
96561	.4740		12.040	.4740"	4"	1-1/2"	.750"	6	73.53	70.33	67.14	63.94
96563	.4750		12.065	.4750"	4"	1-1/2"	.750"	6	73.53	70.33	67.14	63.94
96566	.4760		12.090	.4760"	4"	1-1/2"	.750"	6	73.53	70.33	67.14	63.94
96569	.4770		12.116	.4770"	4"	1-1/2"	.750"	6	73.53	70.33	67.14	63.94
96572	.4780		12.141	.4780"	4"	1-1/2"	.750"	6	73.53	70.33	67.14	63.94
96575	.4790		12.167	.4790"	4"	1-1/2"	.750"	6	73.53	70.33	67.14	63.94

EDP#	$d1^{\dagger}$ Diameter		$d2$ Shank Diameter	$l1$ Overall Length	$l2$ Flute Length	$l3$ Neck Length	Number Flutes	1-11	12-24	25-49	50-100	
	Decimal	Metric										
96578	.4800	12.192	.4800"	4"	1-1/2"	.750"	6	75.14	71.87	68.61	65.34	
96581	.4810	12.217	.4810"	4"	1-1/2"	.750"	6	75.14	71.87	68.61	65.34	
96584	.4820	12.243	.4820"	4"	1-1/2"	.750"	6	75.14	71.87	68.61	65.34	
96587	.4830	12.268	.4830"	4"	1-1/2"	.750"	6	75.14	71.87	68.61	65.34	
96590	.4840	12.294	.4840"	4"	1-1/2"	.750"	6	75.14	71.87	68.61	65.34	
96593	.4844	31/64"	12.304	.4844"	4"	1-1/2"	.750"	6	75.14	71.87	68.61	65.34
96596	.4850	12.319	.4850"	4"	1-1/2"	.750"	6	75.14	71.87	68.61	65.34	
96599	.4860	12.344	.4860"	4"	1-1/2"	.750"	6	75.14	71.87	68.61	65.34	
96602	.4870	12.370	.4870"	4"	1-1/2"	.750"	6	75.14	71.87	68.61	65.34	
96605	.4880	12.395	.4880"	4"	1-1/2"	.750"	6	75.14	71.87	68.61	65.34	
96608	.4890	12.421	.4890"	4"	1-1/2"	.750"	6	75.14	71.87	68.61	65.34	
96611	.4900	12.446	.4900"	4"	1-1/2"	.750"	6	75.14	71.87	68.61	65.34	
96614	.4910	12.471	.4910"	4"	1-1/2"	.750"	6	75.14	71.87	68.61	65.34	
96617	.4920	12.497	.4920"	4"	1-1/2"	.750"	6	75.14	71.87	68.61	65.34	
96620	.4921	12.500	.4921"	4"	1-1/2"	.750"	6	75.14	71.87	68.61	65.34	
96623	.4930	12.522	.4930"	4"	1-1/2"	.750"	6	75.14	71.87	68.61	65.34	
96626	.4940	12.548	.4940"	4"	1-1/2"	.750"	6	75.14	71.87	68.61	65.34	
96629	.4950	12.573	.4950"	4"	1-1/2"	.750"	6	75.14	71.87	68.61	65.34	
96632	.4960	12.598	.4960"	4"	1-1/2"	.750"	6	75.14	71.87	68.61	65.34	
96635	.4970	12.624	.4970"	4"	1-1/2"	.750"	6	75.14	71.87	68.61	65.34	
96638	.4980	12.649	.4980"	4"	1-1/2"	.750"	6	75.14	71.87	68.61	65.34	
96641	.4990	12.675	.4990"	4"	1-1/2"	.750"	6	75.14	71.87	68.61	65.34	
96644	.4995	12.687	.4995"	4"	1-1/2"	.750"	6	75.14	71.87	68.61	65.34	
96645	.4998	12.695	.4998"	4"	1-1/2"	.750"	6	75.14	71.87	68.61	65.34	
96647	.5000	1/2"	12.700	.5000"	4"	1-1/2"	.750"	6	75.14	71.87	68.61	65.34
96650	.5005	12.713	.5005"	4"	1-1/2"	.750"	6	75.14	71.87	68.61	65.34	
96653	.5010	12.725	.5010"	4"	1-1/2"	.750"	6	75.14	71.87	68.61	65.34	
96656	.5020	12.751	.5020"	4"	1-1/2"	.750"	6	75.14	71.87	68.61	65.34	



LHS / RHC

STR / RHC

RHS / RHC

Special Reamers - Solid Carbide - 2 Week Delivery

Solid Carbide Submicron Grain

All reamers furnished with a standard 45° Lead Chamfer

All reamers furnished with a standard neck for reach

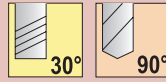
Neck diameter is .010" ±.002" less than fluted diameter

Diameter		Overall Length	Flute Length	No. of Flutes
Decimal	Metric			
.0590" - .0650"	1.499 - 1.651	1-1/2"	3/8"	4
.0660" - .0800"	1.676 - 2.032	1-3/4"	1/2"	4
.0810" - .0950"	2.057 - 2.413	2"	1/2"	4
.0960" - .1300"	2.438 - 3.302	2-1/4"	5/8"	4
.1310" - .1590"	3.327 - 4.039	2-1/2"	3/4"	4
.1600" - .1950"	4.064 - 4.953	2-3/4"	7/8"	4
.1960" - .2540"	4.978 - 6.452	3"	1"	4
.2550" - .3180"	6.477 - 8.077	3-1/4"	1-1/8"	6
.3190" - .4150"	8.103 - 10.541	3-1/2"	1-1/4"	6
.4160" - .4690"	10.566 - 11.913	4"	1-3/8"	6
.4700" - .5020"	11.938 - 12.751	4"	1-1/2"	6
.5030" - .5700"	12.776 - 14.478	4"	1-5/8"	6
.5710" - .7500"	14.503 - 19.050	4"	1-3/4"	6

152M - 2 Flute

NEW SERIES

Technical information: page 244-249



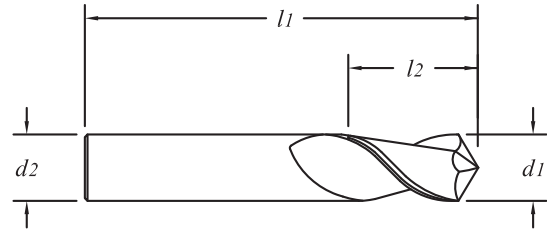
TOLERANCES		
d_1	+0.000" -0.002" (+0.000/-0.050mm)	
d_2	1/8" - 3/16"	+0.0000" -0.0003" (+0.0000/-0.0075mm)
	1/4" - 3/4"	-0.0001" -0.0004" (-0.0025/-0.0100mm)

Solid submicron grain carbide drill/end mill

Included angle to a point - center cutting

Tools do not have drill point geometry

Extremely versatile



EDP#	d_1 †		d_2 Shank Diameter	l_1 Overall Length	l_2 Flute Length	1-11	12-24	25-49	50-100	
	Decimal	Diameter								Metric
57200	.1250	1/8"	3.175	1/8"	1-1/2"	1/2"	10.65	10.19	9.72	9.26
57210	.1875	3/16"	4.763	3/16"	2"	5/8"	14.03	13.42	12.81	12.20
57220	.2500	1/4"	6.350	1/4"	2-1/2"	3/4"	17.42	16.67	15.91	15.15
57230	.3125	5/16"	7.938	5/16"	2-1/2"	7/8"	22.85	21.86	20.86	19.87
57240	.3750	3/8"	9.525	3/8"	2-1/2"	7/8"	27.96	26.74	25.53	24.31
57250	.4375	7/16"	11.113	7/16"	2-3/4"	1"	34.41	32.91	31.42	29.92
57260	.5000	1/2"	12.700	1/2"	3"	1"	52.05	49.79	47.52	45.26
57270	.6250	5/8"	15.875	5/8"	3-1/2"	1-1/4"	84.18	80.52	76.86	73.20
57280	.7500	3/4"	19.050	3/4"	4"	1-1/2"	123.88	118.49	113.11	107.72

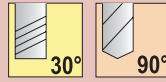
TOLERANCES

<i>d1</i>	+.000" - .002" (+.000 / -.050mm)	
<i>d2</i>	1/8" - 3/16"	+ .0000" - .0003" (+.0000 / -.0075mm)
	1/4" - 3/4"	- .0001" - .0004" (-.0025 / -.0100mm)

Technical information: page 244-249

152MA - 2 Flute

NEW SERIES



DRILL MILLS

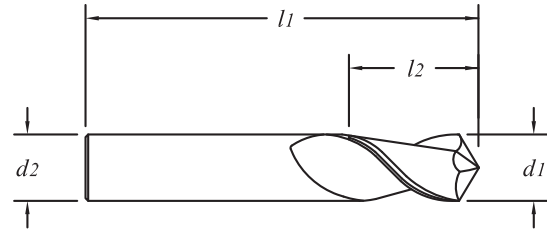
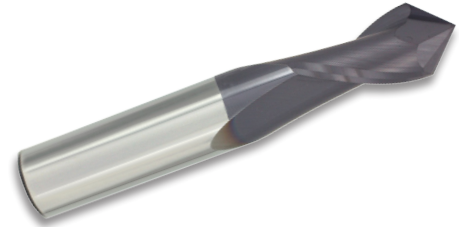
TiALN Coated

Solid submicron grain carbide drill/end mill

Included angle to a point - center cutting

Tools do not have drill point geometry

Extremely versatile

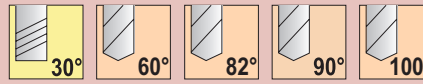


EDP#	<i>d1</i> † Diameter		<i>d2</i> Shank Diameter	<i>l1</i> Overall Length	<i>l2</i> Flute Length	1-11	12-24	25-49	50-100	
	Decimal	Metric								
57207	.1250	1/8"	3.175	1/8"	1-1/2"	1/2"	13.11	12.54	11.97	11.40
57217	.1875	3/16"	4.763	3/16"	2"	5/8"	16.49	15.77	15.06	14.34
57227	.2500	1/4"	6.350	1/4"	2-1/2"	3/4"	22.49	21.52	20.54	19.56
57237	.3125	5/16"	7.938	5/16"	2-1/2"	7/8"	30.49	29.16	27.84	26.51
57247	.3750	3/8"	9.525	3/8"	2-1/2"	7/8"	35.60	34.06	32.51	30.96
57257	.4375	7/16"	11.113	7/16"	2-3/4"	1"	43.06	41.18	39.31	37.44
57267	.5000	1/2"	12.700	1/2"	3"	1"	60.73	58.09	55.45	52.81
57277	.6250	5/8"	15.875	5/8"	3-1/2"	1-1/4"	96.69	92.49	88.28	84.08
57287	.7500	3/4"	19.050	3/4"	4"	1-1/2"	138.66	132.63	126.60	120.57

154M - 4 Flute

NEW SERIES

Technical information: page 244-249



TOLERANCES

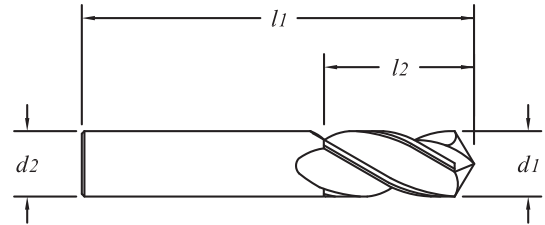
$d1$	+.000" - .002" (+.000 / -.050mm)	
$d2$	3mm - 6mm	+.0000" - .0003" (+.0000 / -.0075mm)
	1/4" - 20mm	-.0001" - .0004" (-.0025 / -.0100mm)

Solid submicron grain carbide drill/end mill

Included angle to a point - center cutting

Tools do not have drill point geometry

Extremely versatile



	NEW 60° EDP#	NEW 82° EDP#	NEW 90° EDP#	NEW 100° EDP#	$d1$ † Diameter		$d2$ Shank Diameter	$l1$ Overall Length	$l2$ Flute Length	1-11	12-24	25-49	50-100	
					Decimal	Metric								
NEW	-	57344	58198	57384	.1181	3.000	3.0	38	12	11.19	10.70	10.22	9.73	
	-	57346	58200	57386	.1250	1/8"	3.175	1/8"	1-1/2"	1/2"	10.65	10.19	9.72	9.26
NEW	-	57348	58202	57388	.1575		4.000	4.0	50	14	14.73	14.09	13.45	12.81
	-	57350	58210	57390	.1875	3/16"	4.763	3/16"	2"	5/8"	14.03	13.42	12.81	12.20
NEW	-	57352	58212	57392	.1969		5.000	5.0	65	16	17.86	17.08	16.31	15.53
NEW	57314	57354	58214	57394	.2362		6.000	6.0	65	19	18.31	17.51	16.72	15.92
	57316	57356	58220	57396	.2500	1/4"	6.350	1/4"	2-1/2"	3/4"	17.42	16.67	15.91	15.15
	57318	57358	58230	57398	.3125	5/16"	7.938	5/16"	2-1/2"	7/8"	22.85	21.86	20.86	19.87
NEW	57320	57360	58232	57400	.3150		8.000	8.0	65	22	24.04	22.99	21.95	20.90
	57322	57362	58240	57402	.3750	3/8"	9.525	3/8"	2-1/2"	7/8"	27.96	26.74	25.53	24.31
NEW	57324	57364	58242	57404	.3937		10.000	10.0	70	25	34.33	32.84	31.34	29.85
	57326	57366	58250	57406	.4375	7/16"	11.113	7/16"	2-3/4"	1"	34.41	32.91	31.42	29.92
NEW	57328	57368	58252	57408	.4724		12.000	12.0	75	25	54.66	52.28	49.91	47.53
	57330	57370	58260	57410	.5000	1/2"	12.700	1/2"	3"	1"	52.05	49.79	47.52	45.26
	57332	57372	58270	57412	.6250	5/8"	15.875	5/8"	3-1/2"	1-1/4"	84.18	80.52	76.86	73.20
NEW	57334	57374	58272	57414	.6299		16.000	16.0	88	32	88.37	84.52	80.68	76.84
	57336	57376	58280	57416	.7500	3/4"	19.050	3/4"	4"	1-1/2"	123.88	118.49	113.11	107.72
NEW	57338	57378	58282	57418	.7874		20.000	20.0	100	38	174.40	166.82	159.23	151.65

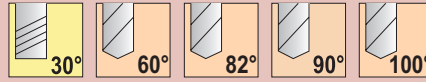
TOLERANCES

d_1		+0.000° -0.002° (+.000 /-.050mm)
d_2	3mm - 6mm	+0.0000° -0.0003° (+.0000 /-.0075mm)
	1/4" - 20mm	-0.0001° -0.0004° (-.0025 /-.0100mm)

Technical information: page 244-249

154MA - 4 Flute

NEW SERIES



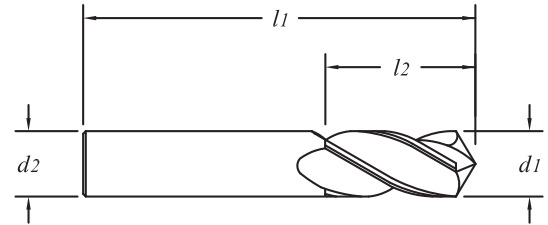
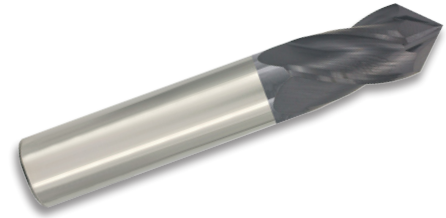
TiALN Coated

Solid submicron grain carbide drill/end mill

Included angle to a point - center cutting

Tools do not have drill point geometry

Extremely versatile



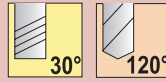
DRILL MILLS

	NEW 60° EDP#	NEW 82° EDP#	90° EDP#	NEW 100° EDP#	d_1 † Diameter		d_2 Shank Diameter	l_1 Overall Length	l_2 Flute Length	1-11	12-24	25-49	50-100	
					Decimal	Metric								
NEW	-	58344	58205	58384	.1181	3.000	3.0	38	12	13.65	13.06	12.46	11.87	
	-	58346	58207	58386	.1250	1/8"	3.175	1/8"	1-1/2"	1/2"	13.11	12.54	11.97	11.40
NEW	-	58348	58209	58388	.1575	4.000	4.0	50	14	17.19	16.45	15.70	14.95	
	-	58350	58217	58390	.1875	3/16"	4.763	3/16"	2"	5/8"	16.49	15.77	15.06	14.34
NEW	-	58352	58219	58392	.1969	5.000	5.0	65	16	22.94	21.95	20.95	19.95	
NEW	58314	58354	58221	58394	.2362	6.000	6.0	65	19	23.39	22.37	21.36	20.34	
	58316	58356	58227	58396	.2500	1/4"	6.350	1/4"	2-1/2"	3/4"	22.49	21.52	20.54	19.56
	58318	58358	58237	58398	.3125	5/16"	7.938	5/16"	2-1/2"	7/8"	30.49	29.16	27.84	26.51
NEW	58320	58360	58239	58400	.3150	8.000	8.0	65	22	31.63	30.25	28.88	27.50	
	58322	58362	58247	58402	.3750	3/8"	9.525	3/8"	2-1/2"	7/8"	35.60	34.06	32.51	30.96
NEW	58324	58364	58249	58404	.3937	10.000	10.0	70	25	42.99	41.12	39.25	37.38	
	58326	58366	58257	58406	.4375	7/16"	11.113	7/16"	2-3/4"	1"	43.06	41.18	39.31	37.44
NEW	58328	58368	58259	58408	.4724	12.000	12.0	75	25	63.31	60.56	57.80	55.05	
	58330	58370	58267	58410	.5000	1/2"	12.700	1/2"	3"	60.73	58.09	55.45	52.81	
	58332	58372	58277	58412	.6250	5/8"	15.875	5/8"	3-1/2"	1-1/4"	96.69	92.49	88.28	84.08
NEW	58334	58374	58279	58414	.6299	16.000	16.0	88	32	100.89	96.50	92.12	87.73	
	58336	58376	58287	58416	.7500	3/4"	19.050	3/4"	4"	138.66	132.63	126.60	120.57	
NEW	58338	58378	58289	58418	.7874	20.000	20.0	100	38	196.24	187.70	179.17	170.64	

152D - 2 Flute

Technical information: page 244-249

NEW SERIES

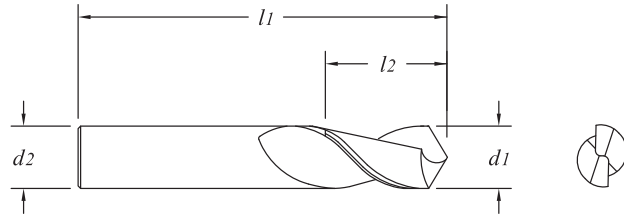


TOLERANCES

$d1$	+.000" - .002" (+.000 / -.050mm)	
$d2$	3mm - 6mm	+ .0000" - .0003" (+.0000 / -.0075mm)
	1/4" - 20mm	- .0001" - .0004" (-.0025 / -.0100mm)

DRILL MILLS

Solid submicron grain carbide drill/end mill
 Recommended for drilling and milling of mild steels and non-ferrous materials
 Four-facet drill point geometry
 Extremely versatile



EDP#	$d1$ † Diameter		$d2$ Shank Diameter	$l1$ Overall Length	$l2$ Flute Length	1-11	12-24	25-49	50-100
	Decimal	Metric							
57420	.1181	3.000	3.0	38	12	11.19	10.70	10.22	9.73
57422	.1250	1/8"	3.175	1/8"	1-1/2"	10.65	10.19	9.72	9.26
57424	.1575	4.000	4.0	50	14	14.73	14.09	13.45	12.81
57426	.1875	3/16"	4.762	3/16"	2"	14.03	13.42	12.81	12.20
57428	.1969	5.000	5.0	65	16	17.86	17.08	16.31	15.53
57430	.2362	6.000	6.0	65	19	18.31	17.51	16.72	15.92
57432	.2500	1/4"	6.350	1/4"	2-1/2"	17.42	16.67	15.91	15.15
57434	.3125	5/16"	7.937	5/16"	2-1/2"	22.85	21.86	20.86	19.87
57436	.3150	8.000	8.0	65	22	24.04	22.99	21.95	20.90
57438	.3750	3/8"	9.525	3/8"	2-1/2"	27.96	26.74	25.53	24.31
57440	.3937	10.000	10.0	70	25	34.33	32.84	31.34	29.85
57442	.4375	7/16"	11.112	7/16"	2-3/4"	34.41	32.91	31.42	29.92
57444	.4724	12.000	12.0	75	25	54.66	52.28	49.91	47.53
57446	.5000	1/2"	12.700	1/2"	3"	52.05	49.79	47.52	45.26
57448	.6250	5/8"	15.875	5/8"	3-1/2"	84.18	80.52	76.86	73.20
57450	.6299	16.000	16.0	88	32	88.37	84.52	80.68	76.84
57452	.7500	3/4"	19.050	3/4"	4"	123.88	118.49	113.11	107.72
57454	.7874	20.000	20.0	100	38	174.40	166.82	159.23	151.65

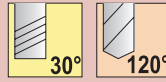
TOLERANCES

d_1	+0.000" -0.002" (+.000 / -.050mm)	
d_2	3mm - 6mm	+0.0000" -0.0003" (+.0000 / -.0075mm)
	1/4" - 20mm	-0.0001" -0.0004" (-.0025 / -.0100mm)

Technical information: page 244-249

152DA - 2 Flute

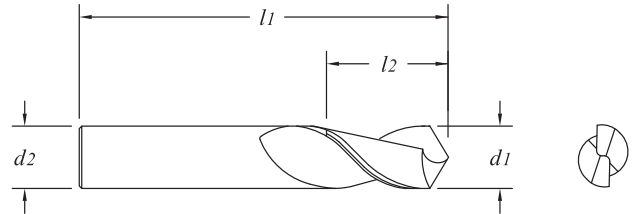
NEW SERIES



DRILL MILLS

TiALN Coated

Solid submicron grain carbide drill/end mill
 Recommended for drilling and milling of mild steels and non-ferrous materials
 Four-flute drill point geometry
 Extremely versatile



EDP#	d_1 † Diameter		d_2 Shank Diameter	l_1 Overall Length	l_2 Flute Length	1-11	12-24	25-49	50-100
	Decimal	Metric							
57421	.1181	3.000	3.0	38	12	13.65	13.06	12.46	11.87
57423	.1250	1/8"	3.175	1/8"	1-1/2"	13.11	12.54	11.97	11.40
57425	.1575	4.000	4.0	50	14	17.19	16.45	15.70	14.95
57427	.1875	3/16"	4.762	3/16"	2"	16.49	15.77	15.06	14.34
57429	.1969	5.000	5.0	65	16	22.94	21.95	20.95	19.95
57431	.2362	6.000	6.0	65	19	23.39	22.37	21.36	20.34
57433	.2500	1/4"	6.350	1/4"	2-1/2"	22.49	21.52	20.54	19.56
57435	.3125	5/16"	7.937	5/16"	2-1/2"	30.49	29.16	27.84	26.51
57437	.3150	8.000	8.0	65	22	31.63	30.25	28.88	27.50
57439	.3750	3/8"	9.525	3/8"	2-1/2"	35.60	34.06	32.51	30.96
57441	.3937	10.000	10.0	70	25	42.99	41.12	39.25	37.38
57443	.4375	7/16"	11.112	7/16"	2-3/4"	43.06	41.18	39.31	37.44
57445	.4724	12.000	12.0	75	25	63.31	60.56	57.80	55.05
57447	.5000	1/2"	12.700	1/2"	3"	60.73	58.09	55.45	52.81
57449	.6250	5/8"	15.875	5/8"	3-1/2"	96.69	92.49	88.28	84.08
57451	.6299	16.000	16.0	88	32	100.89	96.50	92.12	87.73
57453	.7500	3/4"	19.050	3/4"	4"	138.66	132.63	126.60	120.57
57455	.7874	20.000	20.0	100	38	196.24	187.70	179.17	170.64