

GUARDAIR®

Innovation
in the air.

Pneumatic
Vacuums

guardair.com





Table of Contents

Standard Pneumatic Vacuums	3
Vertically Mounted Vacuum Systems	16
Static Conductive Pneumatic Vacuums	19
Hazardous Location Pneumatic Vacuums	24
Hand-held Pneumatic Vacuums	28
Parts & Accessories	32
Air Hose	33
Maintenance Kits	34
Air Hose Connectors & Valves	35-36
Drums, Canisters, Covers & Lids	34-36
Exhaust Parts & Accessories	37
Filters & Accessories	38-39
Liquid Shutoff Parts & Accessories	39
Vacuum Hose	40-41
Vacuum Hose Cuffs & Connectors	42-43
Vacuum Hose Attachments 1.25"	40-41
Vacuum Hose Attachments 1.5" & 2"	40-45
Dollies & Casters	45
FAQs	46



Always wear eye and ear protection when operating air tools and related equipment.

Standard Pneumatic Vacuums





55 gal. Single Venturi Drum Vacuum Kits

Designed to handle the toughest cleaning jobs, Guardair 55 Gallon Single Venturi Drum Vacuums are ideal for vacuuming up chips, dust, debris, liquids or sludge. Powered by compressed air, always dependable and trouble free with no motors or moving parts to wear out, Guardair Drum Vacuums generate exceptional vacuum lift and vacuum flow while operating quietly and efficiently. Very high vacuum lift (D Venturi) and high vacuum lift (B Venturi) versions available. Kit includes the most popular vacuum attachments and accessories. Factory installed options include: Liquid Shutoff Assembly, HEPA Filtration, and Extra Silent Exhaust.

Part No.	Model/Description
N551BC	55 Gallon Drum Vac Kit with 2" Vac Hose & Tools
N551BCX	55 Gallon Drum Vac Kit with 1½" Vac Hose & Tools
N551DC	55 Gallon Drum Vac Kit with 1½" Vac Hose & Tools

See website for full specifications

Features

- Heavy-duty, 19 gauge, 55 gallon steel drum
- Standard cartridge filter
- Air shutoff valve with ½" FNPT inlet and Chicago-style connector
- ¾" x 20' air supply hose with Chicago-style connectors
- 20' standard-duty vinyl vacuum hose
- 12" wide metal wet/dry floor tool with 4' steel wand
- Detachable drum dolly with four, 3" steel swivel casters



55 gal. Dual Venturi Drum Vacuum Kits

Generating 63% more vacuum flow than single Venturi units, Guardair 55 Gallon Dual Venturi Drum Vacuums pick up the heaviest of chips, dust, debris, liquids or sludge, quickly and efficiently. Powered by compressed air, always dependable and trouble free with no motors or moving parts to wear out, these units generate exceptional vacuum lift and vacuum flow. Equipped with dual B type Venturis. Kit includes the most popular vacuum attachments and accessories. Factory installed options include: Liquid Shutoff Assembly, HEPA Filtration and Extra Silent Exhaust.

Part No.	Model/Description
N552BC	55 Gallon Dual Venturi Drum Vac Kit with 2" Vac Hose & Tools
N552BCX	55 Gallon Dual Venturi Drum Vac Kit with 1½" Vac Hose & Tools

See website for full specifications

Features

- Heavy-duty, 19 gauge, 55 gallon steel drum
- Standard cartridge filter
- Air shutoff valve with ¾" FNPT inlet and Chicago-style connector
- ¾" x 20' air supply hose with Chicago-style connectors
- 20' standard-duty vinyl vacuum hose
- Detachable drum dolly with four, 3" steel swivel casters



55 gal. Single Venturi Vacuum Generating Heads

Mount a Guardair Vacuum Generating Head on any standard 55 gallon drum* for convenient, high-performance vacuum capability. Ideal for vacuuming up chips, dust, debris, liquids or sludge. Powered by compressed air; always dependable and trouble free with no motors or moving parts to wear out, Guardair Vacuum Generating Heads produce exceptional vacuum lift and vacuum flow while operating quietly and efficiently. Very high vacuum lift (D Venturi) and high vacuum lift (B Venturi) versions available. Factory installed options include: Liquid Shutoff Assembly, HEPA Filtration and Extra Silent Exhaust.

**19 gauge minimum recommended to prevent drum collapse.*

Part No.	Model/Description
N551B	55 Gallon Vac Generating Head for 2" Vac Hose
N551BX	55 Gallon Vac Generating Head for 1½" Vac Hose
N551D	55 Gallon Vac Generating Head for 1½" Vac Hose

See website for full specifications

Features

- Vacuum generating head with exhaust silencer
- Standard cartridge filter
- Air shutoff valve with ½" FNPT inlet and Chicago-style connector



55 gal. Dual Venturi Vacuum Generating Heads

Mount a Guardair Dual Venturi Vacuum Generating Head on any standard 55 gallon drum* for convenient, high-performance vacuum capability. Generates 63% more vacuum flow than single Venturi units to pick up the heaviest of materials quickly. Powered by compressed air, always dependable and trouble free with no motors or moving parts to wear out, Guardair Dual Venturi Vacuum Generating Heads produce exceptional vacuum lift and vacuum flow while operating quietly and efficiently. Equipped with dual B type Venturis. Factory installed options include: Liquid Shutoff Assembly, HEPA Filtration and Extra Silent Exhaust.

** 19 gauge minimum recommended to prevent drum collapse.*

Part No. Model/Description

N552B	55 Gallon Dual Venturi Vac Generating Head for 2" Vac Hose
N552BX	55 Gallon Dual Venturi Vac Generating Head for 1½" Vac Hose

See website for full specifications

Features

- Dual Venturi vacuum generating head with exhaust silencer
- Standard cartridge filter
- Air shutoff valve with ¾" FNPT inlet and Chicago-style connector



55 gal. Vacuum Generating Head Kits

Mount a Guardair Vacuum Generating Head on any standard 55 gallon drum* for convenient, high-performance vacuum capability. Ideal for vacuuming up chips, dust, debris, liquids or sludge. Powered by compressed air, always dependable and trouble free with no motors or moving parts to wear out, Guardair Vacuum Generating Heads produce exceptional vacuum lift and vacuum flow while operating quietly and efficiently. Very high vacuum lift (D Venturi) and high vacuum lift (B Venturi) versions available. Kit includes the most popular vacuum attachments and accessories. Factory installed options include: Liquid Shutoff Assembly, HEPA Filtration and Extra Silent Exhaust.

** 19 gauge minimum recommended to prevent drum collapse.*

Part No.	Model/Description
N551BK	55 Gallon Vac Generating Head Kit with 2" Vac Hose & Tools
N551B XK	55 Gallon Vac Generating Head Kit with 1½" Vac Hose & Tools
N551DK	55 Gallon Vac Generating Head Kit with 1½" Vac Hose & Tools

See website for full specifications

Features

- Vacuum generating head with exhaust silencer
- Standard cartridge filter
- Air shutoff valve with ½" FNPT inlet and Chicago-style connector
- 20' standard-duty vinyl vacuum hose
- Detachable, 12" wide metal wet/dry floor tool with 4' steel wand
- 24" metal crevice tool



55 gal. Dual Venturi Vacuum Generating Head Kits

Mount a Guardair Dual Venturi Vacuum Generating Head on any standard 55 gallon drum* for convenient, high-performance vacuum capability. Generates 63% more vacuum flow than single Venturi units to pick up the heaviest materials quickly. Powered by compressed air, always dependable and trouble free with no motors or moving parts to wear out, Guardair Dual Venturi Vacuum Generating Heads produce exceptional vacuum lift and vacuum flow while operating quietly and efficiently. Equipped with dual B type Venturis. Kit includes the most popular vacuum attachments and accessories. Factory installed options include: Liquid Shutoff Assembly, HEPA Filtration and Extra Silent Exhaust.

** 19 gauge minimum recommended to prevent drum collapse.*

Part No. Model/Description

N552BK	55 Gallon Dual Venturi Vac Generating Head Kit with 2" Vac Hose & Tools
N552BXX	55 Gallon Dual Venturi Vac Generating Head Kit with 1½" Vac Hose & Tools

See website for full specifications

Features

- Dual Venturi vacuum generating head with exhaust silencer
- Standard cartridge filter
- Air shutoff valve with ¾" FNPT inlet and Chicago-style connector
- 20' standard-duty vinyl vacuum hose
- Detachable, 12" wide metal wet/dry floor tool with 4' steel wand
- 24" metal crevice tool



30 gal. Drum Vacuum Kits

Designed to handle the toughest of cleaning jobs, Guardair 30 Gallon Single Venturi Drum Vacuums are ideal for vacuuming up chips, dust, debris, liquids or sludge. Powered by compressed air, always dependable and trouble free with no motors or moving parts to wear out, Guardair Drum Vacuums generate exceptional vacuum lift and vacuum flow while operating quietly and efficiently. Very high vacuum lift (D Venturi) and high vacuum lift (B Venturi) versions available. Kit includes the most popular vacuum attachments and accessories. Factory installed options include: Liquid Shutoff Assembly, HEPA Filtration and Extra Silent Exhaust.

Part No.	Model/Description
N301BC	30 Gallon Drum Vac Kit with 2" Vac Hose & Tools
N301BCX	30 Gallon Drum Vac Kit with 1½" Vac Hose & Tools
N301DC	30 Gallon Drum Vac Kit with 1½" Vac Hose & Tools

See website for full specifications

Features

- Single Venturi vacuum generating head with exhaust silencer
- Heavy-duty, 18 gauge, 30 gallon steel drum
- Standard cartridge filter
- Air shutoff valve with ½" FNPT inlet and Chicago-style connector
- Detachable drum dolly with four, 3" steel swivel casters
- ¾" x 20' air supply hose with Chicago-style connectors
- 20' standard-duty vinyl vacuum hose



30 gal. Vacuum Generating Heads

Mount a Guardair Vacuum Generating Head on any standard 30 gallon drum* for convenient, high-performance vacuum capability. Ideal for vacuuming up chips, dust, debris, liquids or sludge. Powered by compressed air, always dependable and trouble free with no motors or moving parts to wear out, Guardair Vacuum Generating Heads produce exceptional vacuum lift and vacuum flow while operating quietly and efficiently. Very high vacuum lift (D Venturi) and high vacuum lift (B Venturi) versions available. Factory installed options include: Liquid Shutoff Assembly, HEPA Filtration and Extra Silent Exhaust.

** 18 gauge minimum recommended to prevent drum collapse.*

Part No.	Model/Description
N301B	30 Gallon Vac Generating Head for 2" Vac Hose
N301BX	30 Gallon Vac Generating Head for 1½" Vac Hose
N301D	30 Gallon Vac Generating Head for 1½" Vac Hose

See website for full specifications

Features

- Vacuum generating head with exhaust silencer
- Standard cartridge filter
- Air shutoff valve with ½" FNPT inlet and Chicago-style connector



30 gal. Vacuum Generating Head Kits

Mount a Guardair Vacuum Generating Head on any standard 30 gallon drum* for convenient, high-performance vacuum capability. Ideal for vacuuming up chips, dust, debris, liquids or sludge. Powered by compressed air, always dependable and trouble free with no motors or moving parts to wear out, Guardair Vacuum Generating Heads produce exceptional vacuum lift and vacuum flow while operating quietly and efficiently. Very high vacuum lift (D Venturi) and high vacuum lift (B Venturi) versions available. Kit includes the most popular vacuum attachments and accessories. Factory installed options include: Liquid Shutoff Assembly, HEPA Filtration and Extra Silent Exhaust.

** 18 gauge minimum recommended to prevent drum collapse.*

Part No. Model/Description

N301BK	30 Gallon Vac Generating Head Kit with 2" Vac Hose & Tools
N301B XK	30 Gallon Vac Generating Head Kit with 1½" Vac Hose & Tools
N301DK	30 Gallon Vac Generating Head Kit with 1½" Vac Hose & Tools

See website for full specifications

Features

- Vacuum generating head with exhaust silencer
- Standard cartridge filter
- Air shutoff valve with ½" FNPT inlet and Chicago-style connector
- 20' standard-duty vinyl vacuum hose
- Detachable, 12" wide metal wet/dry floor tool with 4' steel wand
- 24" metal crevice tool



15 gal. Vacuum Kits

Guardair 15 Gallon Vacuum Kits offer the same high level of performance as our larger units but in a more compact and versatile size. Mobile and easy to maneuver. Perfect for workshops, laboratories, and general maintenance. Ideal for vacuuming up chips, dust, debris, liquids or sludge. Powered by compressed air, always dependable and trouble free with no motors or moving parts to wear out. Generate exceptional vacuum lift and vacuum flow while operating quietly and efficiently. Very-high lift/medium flow (D Venturi) and medium lift/medium flow (S Venturi) versions available. Kit includes the most popular vacuum attachments and accessories. Factory installed options include: Liquid Shutoff Assembly, Stainless Steel 20 Gallon Canister and Extra Silent Exhaust.

Part No.	Model/Description
----------	-------------------

N151DC	15 Gallon Vac Kit with 1½" Vac Hose & Tools
--------	---

N151SC	15 Gallon Vac Kit with 1½" Vac Hose & Tools
--------	---

See website for full specifications

Features

- Canister style steel drum with dolly and handle
- Single Venturi vacuum generating head with exhaust silencer
- Standard cloth filter
- Air shutoff valve with ½" FNPT inlet and fittings
- ¾" or ½" x 20' air hose with fittings
- 1½" x 20' standard-duty vinyl vacuum hose with cuffs



8 gal. Vacuum Kits

Guardair 8 Gallon Vacuum Kits offers the same high level of performance as our larger units but in a more compact package. Lightweight, portable. Perfect for applications where low drum capacity is sufficient. Ideal for vacuuming up chips, dust, debris, liquids or sludge. Powered by compressed air; always dependable and trouble free with no motors or moving parts to wear out. Generate exceptional vacuum lift and vacuum flow while operating quietly and efficiently. Very-high lift/medium flow [D Venturi] and medium lift/medium flow [S Venturi] versions available. Kit includes the most popular vacuum attachments and accessories. Factory installed options include: Stainless Steel Canister; Liquid Shutoff Assembly and Extra Silent Exhaust.

Part No.	Model/Description	Valve	Hose ID
N081DC	8 Gallon Vac Kit with 1½" Vac Hose & Tools	½	¾
N081SC	8 Gallon Vac Kit with 1½" Vac Hose & Tools	½	½
N081MC	8 Gallon Vac Kit with 1¼" Vac Hose & Tools	¾	¾

See website for full specifications

Features

- Single Venturi vacuum generating head with exhaust silencer
- Canister style steel drum
- Standard cloth filter
- Air shutoff valve with FNPT inlet and fittings
- 20' air hose with fittings
- 1½" x 20' standard-duty vinyl vacuum hose with cuffs (1¼" x 12' for MC)



4 Gallon Complete Vacuum

Guardair 4 Gallon Vacuum Kit offers the same high level of performance as our larger units but in a more compact package. Lightweight, portable. Perfect for applications where low drum capacity is sufficient. Ideal for vacuuming up chips, dust, debris, liquids or sludge. Powered by compressed air, always dependable and trouble free with no motors or moving parts to wear out. Generate exceptional vacuum lift and vacuum flow while operating quietly and efficiently. Equipped with medium lift/medium flow (M) Venturi. Kit includes the most popular vacuum attachments and accessories. Factory installed options include: Extra Silent Exhaust and Stainless Steel Canister.

Part No.	Model/Description
NO41MC	4 Gallon Vac Kit with 1¼" Vac Hose & Tools

See website for full specifications

Features

- Single Venturi vacuum generating head with exhaust silencer
- Canister style steel drum with carry handle
- Standard cloth filter
- Air shutoff valve with ⅝" Industrial Interchange connector
- ⅝" x 12' air hose with fittings
- 1¼" x 10' standard-duty vinyl vacuum hose with cuffs

Vertically Mounted Vacuum Systems





Machine Vac MV2000

Engineered to mount on any vertical surface, the powerful, portable 5.5 gallon MV2000 Pneumatic Vacuum quickly and effectively sucks up debris, metal chips, dirt, sawdust, and fine materials including powders and talc. Also capable of vacuuming liquids such as machine oils, lubricants, and other fluids. Virtually maintenance-free; no moving parts to wear out. With no electric motor to spark or burn out, the Machine Vac eliminates electrical extension cords — potentially dangerous in wet environments and always a tripping hazard.

Part No.	Model/Description
----------	-------------------

MV2000	MV2000 Pneumatic Vacuum
--------	-------------------------

See website for full specifications

Features

- 5.5 gallon chemical resistant polyethylene container
- Pre-drilled, steel mounting plate
- Cartridge filter (77% Efficient @ 0.8 Microns)
- Liquid shut-off and drum drain
- 1½" ID x 10' flexible vacuum hose
- 1½" OD x 11" plastic crevice tool
- 3/8" FNPT inlet



Personnel Cleaning Station CS3000

Running off standard shop compressed air, the Personnel Cleaning Station pairs a proprietary, on-demand air-agitator brush attachment with a high-efficiency pneumatic vacuum.

Thumb-switch activated, the air-agitator loosens and lifts particles airborne where the vacuum sucks them away safely and effectively. With no motor to burn out, the Personnel Cleaning Station is virtually maintenance-free. Vertical Mounting System (VMS) mounts on any vertical surface, saving valuable factory floor space.

Part No.	Model/Description
----------	-------------------

CS3000	Personnel Cleaning Station
--------	----------------------------

See website for full specifications

Features

- 5.5 gallon chemical resistant polyethylene container
- Pre-drilled, steel mounting plate
- Cartridge filter (77% Efficient @ 0.8 Microns)
- Liquid shut-off and drum drain
- 1½" ID x 5' flexible vacuum hose
- 3/8" FNPT inlet

Static Conductive Pneumatic Vacuums





55 gal. Static Conductive Drum Vacuum Kits

55 Gallon Single Venturi Pneumatic Vacuums eliminate static electricity by incorporating interconnected static conductive components to suppress stray static charges. For added protection, Guardair recommends that users ground the vacuum through optional grounding clamp and cable. Powered by compressed air, with no motors to spark or burnout, and no electric cords, Static Conductive Vacuums generate exceptional vacuum lift and vacuum flow, and offer safe, effective, efficient performance. Kit includes the most popular vacuum attachments and accessories. Factory installed options include: Liquid Shutoff Assembly, HEPA Filtration and Extra Silent Exhaust.

Part No.	Model/Description
N551BCXNED	55 Gallon B Vacuum with 1½" Inlet & Attachment Kit
N551DCNED	55 Gallon D Vacuum with 1½" Inlet & Attachment Kit
N551BCNED	55 Gallon B Vacuum with 2" Inlet & Attachment Kit

See website for full specifications

Features

- Single Venturi vacuum generating head with exhaust silencer
- Heavy-duty, static conductive powder coated, 55 gallon steel drum
- Standard cartridge filter
- Air shutoff valve with ½" FNPT inlet and Chicago-style connector
- Detachable drum dolly; swivel casters with 3" steel wheels
- ¾" x 20' static conductive air hose with Chicago-style connectors
- 20' static conductive vacuum hose
- Detachable, 12" wide metal wet/dry floor tool with 4' steel wand
- 24" metal crevice tool



55 gal. Dual Venturi Static Conductive Drum Vacuum Kits

Generating 63% more vacuum flow than single Venturi units, Guardair 55 Gallon Dual Venturi Static Conductive Drum Vacuums are designed to operate safely in many locations where static charge is a concern. Static conductive attachments, and multiple grounding options eliminate static electricity at the source. Powered by compressed air, with no motors to spark or burnout, and no electric cords, Guardair Static Conductive Vacuums generate exceptional vacuum lift and vacuum flow, and offer safe, effective, efficient performance. Equipped with dual B type Venturis. Kit includes the most popular vacuum attachments and accessories. Factory installed options include: Liquid Shutoff Assembly, HEPA Filtration and Extra Silent Exhaust.

Part No.	Model/Description
N552BCNED	55 Gallon Dual B Vacuum with 2" Inlet & Attachment Kit
N552BCXNED	55 Gallon Dual B Vacuum with 1 1/2" Inlet & Attachment Kit

See website for full specifications

Features

- Dual Venturi vacuum generating head with exhaust silencer
- Heavy-duty, static conductive powder coated, 55 gallon steel drum
- Standard cartridge filter
- Air shutoff valve with 3/4" FNPT inlet and Chicago-style connector
- Detachable drum dolly; swivel casters with 3" steel wheels
- 3/4" x 20' static conductive air hose with Chicago-style connectors
- 20' static conductive vacuum hose
- Detachable, 12" wide metal wet/dry floor tool with 4' steel wand
- 24" metal crevice tool



30 gal. Static Conductive Drum Vacuum Kits

Guardair Static Conductive Drum Vacuums are ideal for vacuuming up chips, dust, debris, liquids, or sludge in locations where static discharge is a concern. Static conductive attachments, and multiple grounding options eliminate static electricity at the source. Powered by compressed air, with no motors to spark or burnout, and no electric cords, Guardair Static Conductive Vacuums generate exceptional vacuum lift and vacuum flow, and offer safe, effective, efficient performance. Very high vacuum lift (D Venturi) and high vacuum lift (B Venturi) versions available. Kit includes the most popular vacuum attachments and accessories. Factory installed options include: Liquid Shutoff Assembly, HEPA Filtration and Extra Silent Exhaust.

Part No.	Model/Description
N301BCNED	30 Gallon B Vacuum with 2" Inlet & Attachment Kit
N301BCXNED	30 Gallon B Vacuum with 1½" Inlet & Attachment Kit
N301DCNED	30 Gallon D Vacuum with 1½" Inlet & Attachment Kit

See website for full specifications

Features

- Single Venturi vacuum generating head with exhaust silencer
- Standard cartridge filter
- Air shutoff valve with ¾" FNPT inlet and Chicago-style connector
- Heavy-duty, staticx conductive powder coated, 30 gallon steel drum
- Detachable drum dolly; swivel casters with 3" steel wheels
- ¾" x 20' static conductive air hose with Chicago-style connectors
- 20' static conductive vacuum hose
- Detachable, 12" wide metal wet/dry floor tool with 4' steel wand
- 24" metal crevice tool

guardair.com



15 gal. Static Conductive Drum Vacuum Kits

15 Gallon Pneumatic Vacuums eliminate static electricity by incorporating static conductive components to suppress static charges. Should stray static electric charges become generated, these charges are immediately dispatched through electrically, inter-conducted conductive external components. For added protection, users can ground the vacuum through optional grounding clamp and cable. Powered by compressed air, Guardair 15 Gallon Non-conductive Drum Vacuums are ideal for vacuuming up chips, dust, debris, liquids, or sludge. Electrically bonded components and static conductive attachment options eliminate static electricity at the source for safe, effective, and efficient performance. Designed to handle the toughest of cleaning jobs, Guardair Non-Conductive Vacuums generate exceptional vacuum lift and vacuum flow. Kit includes the most popular vacuum attachments and accessories. Factory installed options include: Liquid Shutoff Assembly, HEPA Filtration and Extra Silent Exhaust.

Part No.	Model/Description
N151DCNED	15 Gallon D Vacuum with 1 1/2" Inlet & Attachment Kit
N151SCNED	15 Gallon D Vacuum with 1 1/2" Inlet & Attachment Kit

See website for full specifications

Features

- Static conductive powder coated 15 gallon drum with dolly and handle
- Single Venturi vacuum generating head with exhaust silencer
- Standard cloth filter
- Air shutoff valve with 3/4" FNPT inlet and fittings
- 3/4" or 1/2" x 20' static conductive air hose with fittings
- 1 1/2" x 20' static conductive vacuum hose with cuffs
- 12" wide metal wet/dry floor tool with 4' steel wand
- 24" metal crevice tool

Hazardous Location Pneumatic Vacuums





55 gal. Hazardous Location Drum Vacuum Kits

ATEX certified, Guardair 55 Gallon Hazardous Location Drum Vacuums are ideal for vacuuming up chips, dust, debris, liquids, or sludge in hazardous locations. Electrically bonded components, static conductive attachments, and multiple grounding options eliminate static electricity at the source. Powered by compressed air, with no motors to spark or burnout, and no electric cords, Guardair Hazardous Location Vacuums generate exceptional vacuum lift and vacuum flow, and offer safe, effective, efficient performance. Very high vacuum lift (D Venturi) and high vacuum lift (B Venturi) versions available. Kit includes the most popular vacuum attachments and accessories. Factory installed options include: Liquid Shutoff Assembly, HEPA Filtration, and Extra Silent Exhaust.

Part No.	Model/Description
N551BCATEX	55 Gallon Haz Loc Drum Vac Kit with 2" Vac Hose & Tools
N551BCXATEX	55 Gallon Haz Loc Drum Vac Kit with 1½" Vac Hose & Tools
N551DCATEX	55 Gallon Haz Loc Drum Vac Kit with 1½" Vac Hose & Tools

See website for full specifications

Features

- Single Venturi vacuum generating head with exhaust silencer
- Heavy-duty, static conductive powder coated, 55 gallon steel drum
- Standard cartridge filter with electrically conductive cage
- Air shutoff valve with ½" FNPT inlet and Chicago-style connector
- Detachable drum dolly; swivel casters with 3" steel wheels
- ¾" x 20' static conductive air hose with Chicago-style connectors
- 20' static conductive vacuum hose
- 12" wide metal wet/dry floor tool with 4' steel wand



55 gal. Hazardous Location Dual Venturi Drum Vacuum Kits

Generating 63% more vacuum flow than single Venturi units, Guardair 55 Gallon Hazardous Location Dual Venturi Drum Vacuums are designed to operate safely in many hazardous locations. ATEX certified safe. Electrically bonded components, static conductive attachments, and multiple grounding options eliminate static electricity at the source. Powered by compressed air, with no motors to spark or burnout, and no electric cords, Guardair Hazardous Location Vacuums generate exceptional vacuum lift and vacuum flow, and offer safe, effective, efficient performance. Equipped with dual B type Venturis. Kit includes the most popular vacuum attachments and accessories. Factory installed options include: Liquid Shutoff Assembly, HEPA Filtration and Extra Silent Exhaust.

Part No.	Model/Description
N552BCATEX	55 Gallon Haz Loc Dual Venturi Drum Vac Kit with 2" Vac Hose & Tools
N552BCXATEX	55 Gallon Haz Loc Dual Venturi Drum Vac Kit with 1½" Vac Hose & Tools

See website for full specifications

Features

- Dual Venturi vacuum generating head with exhaust silencer
- Heavy-duty, static conductive powder coated, 55 gallon steel drum
- Standard cartridge filter with electrically conductive cage
- Air shutoff valve with ¾" FNPT inlet and Chicago-style connector
- Detachable drum dolly; swivel casters with 3" steel wheels
- ¾" x 20' static conductive air hose with Chicago-style connectors
- 20' static conductive vacuum hose
- 12" wide metal wet/dry floor tool with 4' steel wand



30 gal. Hazardous Location Drum Vacuum Kits

ATEX certified, Guardair 30 Gallon Hazardous Location Drum Vacuums are ideal for vacuuming up chips, dust, debris, liquids, or sludge in many hazardous locations. Electrically bonded components, static conductive attachments, and multiple grounding options eliminate static electricity at the source. Powered by compressed air, with no motors to spark or burnout, and no electric cords, Guardair Hazardous Location Vacuums generate exceptional vacuum lift and vacuum flow, and offer safe, effective, efficient performance. Very high vacuum lift (D Venturi) and high vacuum lift (B Venturi) versions available. Kit includes the most popular vacuum attachments and accessories. Factory installed options include: Liquid Shutoff Assembly, HEPA Filtration, and Extra Silent Exhaust.

Part No.	Model/Description
N301BCATEX	30 Gallon Haz Loc Drum Vac Kit with 2" Vac Hose & Tools
N301BCXATEX	30 Gallon Haz Loc Drum Vac Kit with 1½" Vac Hose & Tools
N301DCATEX	30 Gallon Haz Loc Drum Vac Kit with 1½" Vac Hose & Tools

See website for full specifications

Features

- Single Venturi vacuum generating head with exhaust silencer
- Heavy-duty, static conductive powder coated, 30 gallon steel drum
- Standard cartridge filter with electrically conductive cage
- Air shutoff valve with ½" FNPT inlet and Chicago-style connector
- Detachable drum dolly; swivel casters with 3" steel wheels
- ¾" x 20' static conductive air hose with Chicago-style connectors
- 20' static conductive vacuum hose
- 12" wide metal wet/dry floor tool with 4' steel wand

Hand-held Pneumatic Vacuums





Gun Vac

Twice the power of a standard shop vacuum in the palm of your hand. Powered by standard shop compressed air, the lightweight 1500 Gun Vac has no electric motors to burn out. Easy to empty, high filtration collection bag attaches to rear of vacuum via hose cuff. Tapered vacuum inlet accepts all standard 1 1/4" vac accessories. Unit hangs on a hook, ready for use at anytime.

Part No.	Model/Description
----------	-------------------

1500	Gun Vac
------	---------

See website for full specifications

Features

- Rugged, all metal construction
- Contoured comfort grip
- Convenient hanging eyelet
- High filtration collection bag with zipper
- 9" crevice tool included
- 1/4" FNPT bottom and rear inlets



Gun Vac Deluxe Kit

Twice the power of a standard shop vacuum in the palm of your hand. Powered by standard shop compressed air; the lightweight 1500 Gun Vac has no electric motors to burn out. Easy to empty, high filtration collection bag attaches to rear of vacuum via hose cuff. Tapered vacuum inlet accepts all standard 1 1/4" vac accessories (5 included). Unit hangs on a hook, ready for use at anytime.

Part No.	Model/Description
----------	-------------------

1510	Gun Vac Deluxe Kit
------	--------------------

See website for full specifications

Features

- 1500 Gun Vac with all metal construction
- Contoured comfort grip
- Convenient hanging eyelet
- High filtration collection bag with zipper
- 5 piece plastic accessory kit included
- 1/4" NPT bottom and rear inlets



Flexible Gun Vac

Twice the power of a standard shop vacuum in the palm of your hand. Powered by standard shop compressed air, the lightweight 1548 Flexible Gun Vac has no electric motors to burn out. Easy to empty high filtration collection bag attaches to rear of vacuum via hose cuff. Unit hangs on a hook, ready for use at anytime. Threaded vacuum inlet accepts 18" x 1 - 5/16" OD flexible metal extension (included).

Part No.	Model/Description
1548	Flexible Gun Vac

See website for full specifications

Features

- Rugged, all metal construction
- Contoured comfort grip
- Convenient hanging eyelet
- High filtration collection bag with zipper
- 18" x 1 5/16" O.D. Flexible metal extension
- 1/4" NPT bottom and rear inlets

Parts & Accessories





Heavy-Duty Rubber Air Hose

Tough, abrasion- and ozone-resistant, Heavy-Duty Rubber Air Hose supplies compressed air to Guardair vacuums. Air fittings tested to industry standards. Includes factory installed connectors.

Part No.	Model/Description
----------	-------------------

N607	1/2" ID x 20' Air Hose
------	------------------------

N606	3/4" ID x 20' Air Hose
------	------------------------

See website for full specifications



Static Conductive Air Hose

Static Conductive Air Hose is ideal for supplying compressed air to Guardair vacuums in applications where static electricity is of concern. Reinforced rubber provides excellent ozone resistance and long-term durability. Air fittings tested to industry standards. Includes factory installed Chicago-style connectors.

Part No.	Model/Description
----------	-------------------

N606NED	3/4" ID x 20' Static Cond. Air Hose
---------	-------------------------------------

N607NED-1	1/2" ID x 20' Static Cond. Air Hose
-----------	-------------------------------------

See website for full specifications



Coiled Nylon Air Hose

Tough, abrasion resistant, nylon air hose supplies compressed air to Guardair vacuums. Stretches to 12 feet when uncoiled. Retracts to a compact, 5.5" OD x 7.5" coil. Protective end sleeves prevent kinking. Includes factory installed connectors.

Part No.	Model/Description
----------	-------------------

NB48	3/4" ID x 12' Air Hose
------	------------------------

See website for full specifications



NMK55

55 gal. Vacuum Maintenance Kits

Everything necessary to keep Guardair vacuum units running smoothly and efficiently. Maintenance kits includes standard cartridge filter, cloth pre-filter bag, drum cover gasket, exhaust silencer foam insert, filter retaining springs, and mounting hardware.



NMK30

30 gal. Vacuum Maintenance Kits

Everything necessary to keep Guardair vacuum units running smoothly and efficiently. Maintenance kits includes standard cartridge filter, cloth pre-filter bag, drum cover gasket, exhaust silencer foam insert, filter retaining springs, and mounting hardware.



N601

15 gal. Steel Canister

Ideal for storing wet and dry vacuumed materials, Steel Canister comes complete with a wheeled dolly for ease of movement. Sturdy chrome lid clamps hold cover in place. Epoxy/phenolic lining provides water and alkali resistance and prevents chipping and peeling. 15 gallon capacity.



N605

15 gal. Vacuum Lid

Constructed from heavy-duty, 14-gauge steel, vacuum lids feature a durable, black hammertone powder coat for rust resistance. Clamps onto canister for a positive vacuum seal. Fit 15 gallon vacuum units.



N840

8 & 4 gal. Vacuum Lids

Constructed from heavy-duty, 14-gauge steel, vacuum lids feature a durable, black hammertone powder coat for rust resistance. Clamps onto canister for a positive vacuum seal. Fit 8 gallon and 4 gallon vacuum units.



N614

Vacuum Lid Clamps

Heavy-duty lid clamps create a leak-proof, vacuum seal for 15 gallon, 8 gallon and 4 gallon Guardair vacuum units.



N871

8 gal. Canister with Lid Clamps

Heavy-duty steel canister provides exceptional durability and corrosion resistance. Ideal for recovery of caustic materials. Includes sturdy chrome lid clamps to secure the cover. Quick-release dump valve drains liquids quickly and efficiently. 8 gallon capacity.



N811

4 gal. Stainless Steel Canister

Heavy-duty stainless steel canister provides exceptional durability and corrosion resistance. Ideal for recovery of caustic materials. Includes sturdy chrome lid clamps to secure the cover. Quick-release dump valve drains liquids quickly and efficiently. 4 gallon capacity.



N801

4 gal. Steel Canister

Ideal for storing wet and dry vacuumed materials, Guardair's Steel Canister features an epoxy/phenolic lining for water and alkali resistance and to prevent chipping and peeling. 4 gallon capacity.



N701

55 & 30 gal. Plastic Discharge Elbow

Rugged, static conductive polypropylene, Plastic Discharge Elbow mounts on the interior of the vacuum drum cover to direct the vacuum flow away from the filter. Fits all 55 gallon and 30 Gallon Guardair Drum Vacuums and Vacuum Generating Heads.



N700

55 & 30 gal. Plastic Inlet Elbow

Rugged, static conductive polypropylene, Plastic Inlet Elbow mounts on the exterior of the vacuum drum cover. Fits all 55 gallon and 30 Gallon Guardair Drum Vacuums and Vacuum Generating Heads.



N620

55 & 30 gal. Liquid Drain Valve

Rugged, cast iron Liquid Drain Valve is excellent for dispensing heavy oils, light grease, food products and other non-flammable viscous liquids from 55 and 30 drums. Lapped brass faceplate provides smooth operation and a perfect seal, while a sturdy, two-inch metal handle offers optimum flow control. Inlet threads into the bunghole of drum. Can be padlocked.



N645

50 & 30 gal. Liquid Drain Valve Strainer Assembly

Features rugged, cast iron, liquid drain valve with stainless steel-plated, wire-mesh inlet screen. Ideal for straining and dispensing heavy oils, food products and other liquids. Inlet threads into the bunghole of 55 gallon and 30 gallon drums.



N608B

15 gal. Disposable Double-Ply Recovery Bags

Disposable, liquid-tight, double-ply bags allow complete recovery of wet or dry vacuumed product from drums. Easy to install. Fit inside 15 vacuum canisters.



N882B

8 gal. Disposable Double-Ply Recovery Bags

Disposable, liquid-tight, double-ply bags allow complete recovery of wet or dry vacuumed product from drums. Easy to install. Fit inside 8 gallon vacuum canisters.



N812B

4 gal. Disposable Double-Ply Recovery Bags

Disposable, liquid-tight, double-ply bags allow complete recovery of wet or dry vacuumed product from drums. Easy to install. Fit inside 4 gallon vacuum canisters.



N650PB

30 gal. Disposable Drum Liners

Disposable, liquid-tight plastic drum liners allow complete recovery of wet or dry vacuumed product from drums. 8-millimeter polyethylene film features heat-sealed seams for strong, contoured to fit. FDA-approved material allows for contact with food. Fit inside 55 gallon steel drums.



N630PB

30 gal. Disposable Drum Liners

Disposable, liquid-tight plastic drum liners allow complete recovery of wet or dry vacuumed product from drums. 8-millimeter polyethylene film features heat-sealed seams for strong, contoured to fit. FDA-approved material allows for contact with food. Fit inside 30 gallon steel drums.



N711

Extra-Silent Exhaust Foam Insert

Sound-absorbing foam insert acts as a muffler to reduce noise levels. Fits inside Extra Silent Exhaust Housing. Fits 55, 30, 15 & 8 gallon vacuums.



N686

Exhaust Silencer Foam Insert for B, D, & S Type Venturi

Sound-absorbing foam insert functions as muffle to reduce noise levels. Fits inside Exhaust Silencer Housing.



N886

Exhaust Silencer Foam Insert for M Type Venturi

Sound-absorbing foam insert functions as muffle to reduce noise levels. Fits inside Exhaust Silencer Housing.



N685C

Exhaust Silencer Housing End Cap

End cap seals end of Exhaust Silencer Housing. Replacement part. Fits 55, 30, 15 & 8 gallon vacuums.



N635U

Absolute ULPA Cartridge Filter

Absolute ULPA (Ultra Low Penetration Air) Cartridge Filter meets the highest industry standards for air filtration - 99.97% efficiency for particles up to 0.1 microns. Fits 55 Gallon and 30 Gallon vacuums.



N635H

Absolute HEPA Cartridge Filter

Absolute HEPA (High Efficiency Particulate Air) Cartridge Filter meets industry standards for HEPA air filtration - 99.98% efficiency for particles up to 0.3 microns. Fits 55 Gallon and 30 Gallon vacuums.



N635B

Cloth Pre-Filter Bag

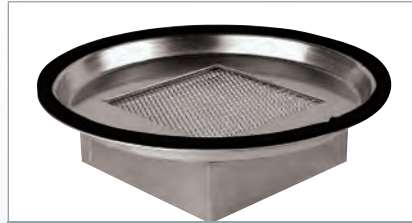
Extend the life of cartridge filters with Cloth Pre-Filter Bag. Cotton flannel bag installs over Standard, HEPA, and ULPA cartridge filters providing extra stage of filtration. Prevents wear and tear by capturing larger particles before they reach the cartridge filter. Washable and reusable. Replacement part for HEPA and ULPA filters.



N6603

Cartridge Filter Retaining Springs

Cartridge Filter Retaining Springs provide safe, secure method of mounting cartridge filters, Cloth Filter Frame, or Liquid Shutoff Assembly to underside of vacuum drum cover. For use with all 55 and 80 Gallon Drum Vacuums and Vacuum Generating Heads.



N612H

Absolute HEPA Filter

Absolute HEPA (High Efficiency Particulate Air) Cartridge Filter meets industry standards for HEPA air filtration - 99.97 percent efficiency for particles up to 0.3 microns. Cloth pre-filter bag provides extra stage of filtration extending the life of the filter. Fits 15 Gallon Guardair vacuums.



N822

Standard Denim Cloth Filter Assembly

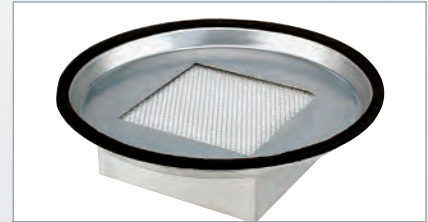
Ideal for vacuuming dirt, sawdust, metal chips, and most other dry materials, the Standard Denim Cloth Filter Assembly includes rugged, steel wire frame and standard cloth filter. Fits all 8 gallon vacuums.



N8221

Standard Denim Cloth Filter

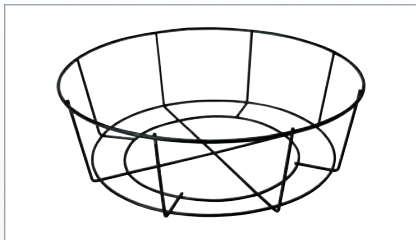
Ideal for picking up dirt, sawdust, metal chips, and other dry materials, the Standard Cloth Filter consists of heavy-duty cloth filter with bottom sealing gasket. Fits all 8 gallon vacuums.



N815H

Absolute HEPA Filter Assembly

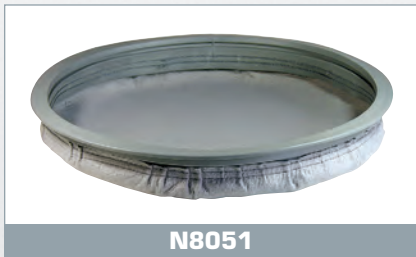
The Absolute HEPA (High Efficiency Particulate Air) Cartridge Filter meets industry standards for HEPA air filtration - 99.97 percent efficiency for particles up to 0.3 microns. Cloth pre-filter bag provides extra stage of filtration extending the life of the filter. Fits all 8 Gallon and 4 Gallon vacuums.



N8222

Standard Denim Cloth Filter Frame

Sturdy, steel wire frame attaches to underside of vacuum lid and holds standard cloth filters in position via grooved rubber gasket. Fits all 8 gallon vacuums.



N8051

Standard Pancake Cloth Filter

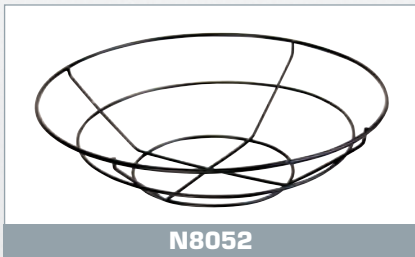
Ideal for picking up dirt, sawdust, metal chips, and other dry materials, the Standard Pancake Cloth Filter consists of heavy-duty cloth filter with bottom sealing gasket. Fits all 4 gallon vacuum units.



N638

Liquid Shutoff Assembly

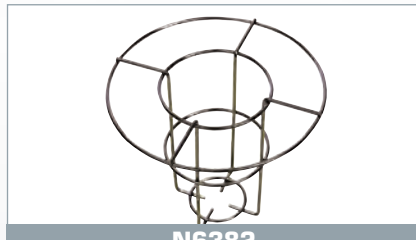
Liquid Shutoff Assembly limits intake of vacuumed fluids when drum is full, preventing damage to exhaust silencer(s). Replaces standard (dry) cartridge filter. Available as stand-alone item or factory installed option. Fits 55 and 30 gallon vacuums.



N8052

Standard Cloth Filter Frame

Sturdy, steel wire frame attaches to underside of vacuum lid and holds standard cloth filters in position via grooved rubber gasket. Fits all 4 gallon vacuums.



N6382

Liquid Shutoff Cage

Wire cage mounts within the retaining ring under vacuum drum cover with three retaining springs (not included). Replacement part for Liquid Shutoff Assembly. For use with all 55 Gallon and 30 Gallon Drum Vacuums and Vacuum Generating Heads.



N6381

Liquid Shutoff Float Ball

Float ball rises to deadhead the vacuum as the liquid level increases. For use with 55, 30, 15, and 8 Gallon Liquid Shutoff Assemblies.



Standard-Duty Vinyl Vacuum Hose

Flexible and crushproof, Standard-Duty Vinyl Vacuum Hose is an excellent multi-purpose hose for commercial and industrial applications. Flexible and easy-to-bend. Performs equally well in wet or dry environments. Features lightweight construction, abrasion-resistant exterior, and smooth interior for maximum airflow. Available in 1.25", 1.5", and 2" ID.

Part #	Model/Description
N841	1.25" x 10' Standard-Duty Vinyl Vacuum Hose
N69110	1.5" x 10' Standard-Duty Vinyl Vacuum Hose
N69120	1.5" x 20' Standard-Duty Vinyl Vacuum Hose
N69130	1.5" x 30' Standard-Duty Vinyl Vacuum Hose
N69140	1.5" x 40' Standard-Duty Vinyl Vacuum Hose
N69150	1.5" x 50' Standard-Duty Vinyl Vacuum Hose
N67010	2" x 10' Standard-Duty Vinyl Vacuum Hose
N67020	2" x 20' Standard-Duty Vinyl Vacuum Hose
N67030	2" x 30' Standard-Duty Vinyl Vacuum Hose
N67040	2" x 40' Standard-Duty Vinyl Vacuum Hose
N67050	2" x 50' Standard-Duty Vinyl Vacuum Hose



Heavy-Duty Vinyl Neoprene Vacuum Hose

Tackle the toughest industrial and commercial jobs with reinforced Heavy-Duty Vinyl Neoprene Vacuum Hose. Repels corrosion from many abrasive products and chemicals. Weather resistant, resists sun damage, mildew, and extreme temperatures. Features excellent flexibility and a smooth interior for uninterrupted flow. Crushproof and kink-resistant. Available in 1.5" and 2" ID.

Part #	Model/Description
N690	1.5" x 20' Heavy-Duty Neoprene Vacuum Hose
N669	2" x 20' Heavy-Duty Neoprene Vacuum Hose



Heavy-Duty Static Conductive Neoprene Vacuum Hose

Ideal for wet vacuum applications, Liquid Shutoff Assembly limits intake of vacuumed fluids when drum is full, preventing damage to exhaust silencer(s). Float ball rises as liquid level rises, blocking vacuum inlet to Venturi box, ceasing vacuum operation. Wire cage with internal float ball mounts to drum cover. Replaces standard (dry) cartridge filter. Available as stand-alone item or factory installed option.

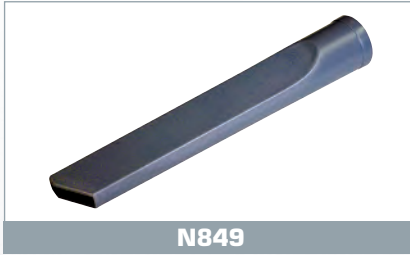
Part #	Model/Description
N661	1.5" x 20' Heavy-Duty Static Conductive Neoprene Vacuum Hose
N662	2" x 20' Heavy-Duty Static Conductive Neoprene Vacuum Hose



Standard-Duty Static Conductive Polyethylene Vacuum Hose

Ideal for wet vacuum applications, Liquid Shutoff Assembly limits intake of vacuumed fluids when drum is full, preventing damage to exhaust silencer(s). Float ball rises as liquid level rises, blocking vacuum inlet to Venturi box, ceasing vacuum operation. Wire cage with internal float ball mounts to drum cover. Replaces standard (dry) cartridge filter. Available as stand-alone item or factory installed option.

Part #	Model/Description
NB6110	1.25" x 10' Standard-Duty Static Conductive Polyethylene Vacuum Hose
N653	1.5" x 20' Standard-Duty Static Conductive Polyethylene Vacuum Hose
N654	2" x 20' Standard-Duty Static Conductive Polyethylene Vacuum Hose



N849

Plastic Crevice Tool

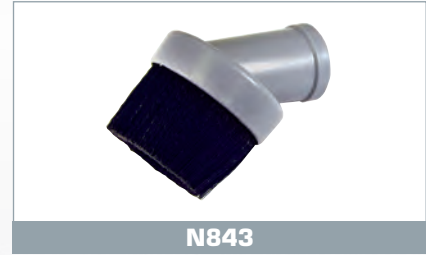
Ideal for vacuuming hard-to-reach places, the Plastic Crevice Tool also excels in bulk pickup. Narrow, angled working end increases vacuum efficiency. For wet or dry pickup. Compatible with 1.25" vacuum hose accessories



N842

Plastic Extension Wand

Provides 20 inches of additional reach for Guardair vacuum accessories and tools. Ideal for reaching out-of-the-way spots or preventing back strain. Compatible with 1.25" vacuum hose accessories.



N843

Plastic Round Brush Tool

Lightweight, economical, Plastic Round Brush Tool. Tough high-grade plastic base with polypropylene bristles prevent scratching of delicate surfaces while still delivering superior vacuum power. Compatible with 1.25" vacuum hose accessories.



N8412

Plastic Angled Tool Coupler

Angled tool coupler provides ergonomic advantage as well as 9.5" of extra reach. Compatible with 1.25" vacuum hose accessories.



N692S

Metal Squeegee Tool

Quickly dry wet floors and suck up excess water with the Metal Squeegee Tool. Replaceable neoprene blades won't mark up or damage surfaces, while a lightweight aluminum body provides ease of use and lasting durability. Compatible with 1.5" vacuum hose accessories.



N692B

Metal Floor Tool with Bristles

Designed to clean dry materials from floors and other surfaces. Ideal for sucking up dirt, powder, or other construction materials. Nylon bristles, with lightweight, aluminum body offers ease of use and durability. Compatible with 1.5" vacuum hose accessories.



N814

Vacuum Hose Swivel Inlet Connector 1.25"

Vacuum Hose Swivel Inlet Connector provides swiveled, inlet for Guardair 15 gallon, 8 gallon and 4 gallon steel canisters. Interlocking components deliver 360 degree range of motion to minimize vacuum hose kinks.



N6952

Vacuum Hose Swivel Inlet Connector 1.5"

Vacuum Hose Swivel Inlet Connector provides swiveled, inlet for Guardair 15 gallon, 8 gallon and 4 gallon steel canisters. Interlocking components deliver 360 degree range of motion to minimize vacuum hose kinks.



N825

Standard-Duty Vacuum Hose 1.25"

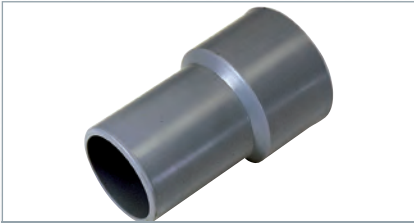
Vinyl hose cuff threads over vacuum hose providing a secure and positive connection to vacuum unit, tools, and accessories. Fits 1.25" ID Standard-Duty Vinyl Vacuum Hose.



N672

Steel Vacuum Hose Coupler

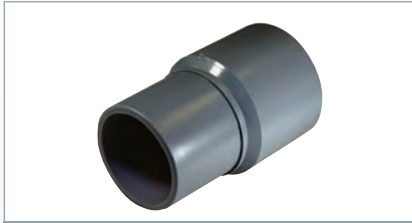
Heavy-duty Steel Vacuum Hose Coupler provides secure connection and prevents loss of suction when attaching two, same-size diameter vacuum hoses. Fits 1.5" ID Standard-Duty Vinyl and Heavy-Duty Neoprene Vacuum Hose. Use of hose clamps (not included) optional.



N621

Standard-Duty Vacuum Hose Cuff 1.5"

Vinyl hose cuff threads over vacuum hose providing a secure and positive connection to vacuum unit, tools, and accessories. Fits 1.5" ID Standard-Duty Vinyl Vacuum Hose.



N622

Standard-Duty Vacuum Hose Cuff 2"

Vinyl hose cuff threads over vacuum hose providing a secure and positive connection to vacuum unit, tools, and accessories. Fits 2" ID Standard-Duty Vinyl Vacuum Hose.



N845

Plastic Utility Tool with Brush

5" wide plastic utility tool with brush for 1.25" vacuum hose.



N715

Steel Vacuum Hose Adapter 1.5"

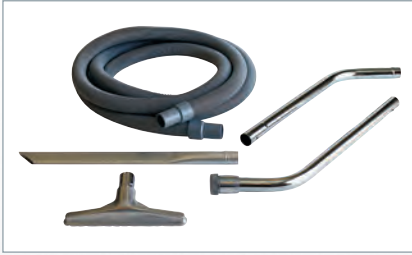
Connect vacuum hose to vacuum inlet with the Steel Vacuum Hose Adapter. Nickel chrome-plated 18-gauge steel construction. Fits 1.5" hoses.



N720

Steel Vacuum Hose Adapter 2"

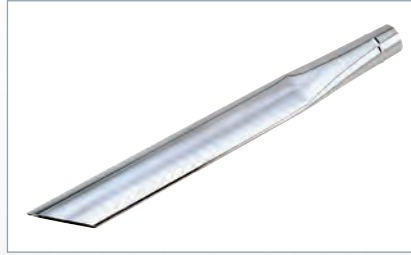
Connect vacuum hose to vacuum inlet with the Steel Vacuum Hose Adapter. Nickel chrome-plated 18-gauge steel construction. Fits 2" hoses.



Vacuum Attachment Kit

Get the most from Guardair vacuums with this 5-piece vacuum attachment kit. Includes the most popular tools and accessories for tackling a range of industrial cleaning jobs. Comes with crevice tool, wet/dry floor tool, wand, and 20' standard-duty vacuum hose. Compatible with 1.5" or 2" vacuum hose accessories.

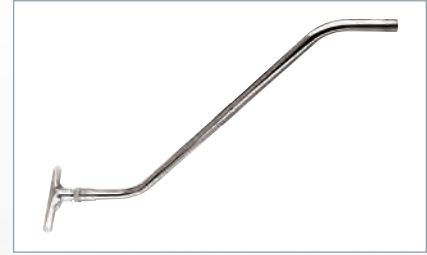
Part #	Model/Description
NSVK15	1.5" Vacuum Attachment Kit
NSVK20	2" Vacuum Attachment Kit



Metal Crevice Tool

Ideal for vacuuming hard-to-reach places, the Metal Crevice Tool also excels in bulk pickup. Narrow, angled working end increases vacuum efficiency. For wet or dry pickup. Compatible with 1.5" or 2" vacuum hose accessories.

Part #	Model/Description
N693	1.5" x 24" Metal Crevice Tool
N674	2" x 24" Metal Crevice Tool



Metal Wet/Dry Floor Tool With Wand

An all-around workhorse, the Metal Wet/Dry Floor Tool performs on nearly any kind of surface and sucks up a variety of materials, from sand to sawdust to liquid spills. Features a aluminum body with two-piece button locking steel wand. For wet or dry pickup. Compatible with 1.5" or 2" vacuum hose accessories.

Part #	Model/Description
N692	1.5" x 12" Metal Wet/Dry Floor Tool with Wand
N639	2" x 12" Metal Wet/Dry Floor Tool with Wand



Metal Bulk Sand Pick-Up Tool

Rugged Metal Bulk Sand Pick-Up Tool quickly and efficiently extracts large volumes of sand or plastic pellets without clogging or losing suction. Secondary draft tube allows for continuous vacuum flow even when tool is dead-ended. Lightweight steel construction. Durable nickel chrome finish resists rust and abrasion. For wet or dry pick up. Compatible with 1.5" or 2" vacuum hose accessories.

Part #	Model/Description
N665	1.5" Metal Bulk Sand Pick-Up Tool
N666	2" Metal Bulk Sand Pick-Up Tool



N668 and N667

55 & 30 gal. Drum Dollies

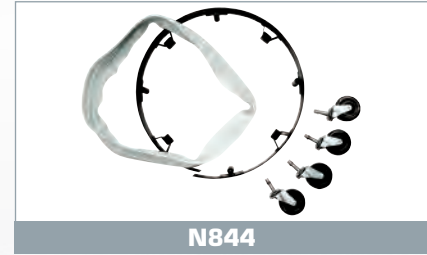
Avoid dragging heavy drums across a floor. Rugged, durable dollies make transportation a cinch, even when the vacuum unit is full. Sturdy steel frame features load-stabilizing lip. Four, steel swivel casters allow for easy rolling and wide range of motion. Holds up to 1,000 pound load.



N603

8 & 4 gal. Swivel Caster

Non-marring, black rubber, swivel caster. Fits 15 gallon; 8 gallon and 4 gallon canister dollies.



N844

8 & 4 gal. Canister Dolly

Avoid dragging heavy drums across a floor. Rugged, durable dolly makes transportation a cinch, even when the vacuum unit is full. Sturdy steel frame features load-stabilizing lip. Four, non-marring black rubber casters allow for easy rolling and wide range of motion.

FAQs

GENERAL

How can I purchase Guardair products?

Contact our Customer Service Department by phone at 800-482-7324, via email at info@guardair.com, or via fax at 413-594-4884.

How do I obtain current product pricing and availability?

Product pricing and availability can be obtained by contacting the Guardair Customer Service Department.

How can I obtain Guardair product literature?

Go to the Literature section of the Guardair website where product literature can be viewed or downloaded. Hard copies can be obtained by clicking on the Mail Hard Copy button.

TECHNICAL

How do Guardair compressed air-powered vacuums work?

Compressed air-powered vacuums (also known as pneumatic vacuums) work on the Venturi principle. Compressed air, via the air supply hose, enters the Venturi box and travels through the injector. As the air continues through the surrounding Venturi, it accelerates, thereby creating low pressure inside the Venturi box. This low pressure induces vacuum flow inside the adjacent canister, and in turn through the attached vacuum hose. Visit our website for a compressed air-powered vacuum diagram.

What are the advantages of compressed air-powered vacuums over electrical powered vacuums?

Compressed air-powered vacuums offer a number of significant advantages. First, they have no electric motor, or any moving parts for that matter. Therefore, they shine in heavy duty-cycle (on-off-on-off) applications conducive to burning out electric vacs. Second, because there is no electric motor, sparking at the brushes is eliminated, and no electric fields are present. Third, they require no dangerous, high voltage electrical cords, an important feature for wet and/or hazardous environments. Fourth, they provide significantly more vacuum lift than electric vacs. Finally, compressed air is often more readily available than electric power in some mobile, and in many in-plant locations.

What is the difference between Vacuum Flow and Vacuum Lift?

Vacuum Flow is the volume of air that passes through a vacuum hose during a given period of time. Vacuum flow is expressed in cubic feet per minute (cfm). With any given diameter vacuum hose, the higher the vacuum flow, the higher the air velocity traveling through that vacuum hose, and the more effective the vacuum unit will be at sucking up and transporting debris.

Vacuum Lift is the height that a vacuum unit can raise a given material or liquid. Vacuum lift (sometimes referred to as vacuum head) is expressed in inches of mercury (in Hg), or inches of water (in H₂O). Thus a vacuum with a rating of say 120 inches of water would be able to suck up water from a tank buried 120 inches (10 feet) underground.

What is the definition of Vacuum Suction?

Vacuum suction is a non-scientific term referring to the general cleaning power of a vacuum unit. Vacuum suction is an off-hand way to describe a vacuum unit's ability to generate vacuum flow, vacuum lift, and its overall effectiveness.

With respect to compressed air used to power vacuums, what is the difference between Pressure and Flow?

Pressure is the measure of potential energy stored within compressed air. Pressure is measured in pounds per square inch (psi). The higher the pressure, the more energy is stored, and the more work can be performed. In general, most industrial compressed air systems operate at pressures between 80 and 120 psi. The electrical equivalent of pressure is voltage.

Flow is the volume of air traveling through an air supply line, or through a vacuum line, during a given period of time. Flow is measured in cubic feet per minute (cfm). The electrical equivalent of flow is amperage.

What size (capacity) air compressor do I need to operate my Guardair vacuum?

A good rule of thumb states that air compressors generate approximately 4 cubic feet per minute (cfm) of compressed air per horsepower (HP) on a continuous basis. To size a compressor in HP, divide the air requirement (cfm) of the vacuum by 4. Refer to the specification on your compressor for more information.

How does tank size effect vacuum performance?

Tank size can also effect the operation of the vacuum. The larger the tank, the longer the period of time the vacuum can run without calling upon the air compressor to cycle "on" and refill the tank.

What is the recommended operating air pressure for my Guardair vacuum?

Most in-plant air compressors operate at pressures between 80 and 120 psi. This is the air pressure range we recommend for Guardair vacuums.

What size air supply line do I need to run my Guardair vacuum?

Guardair vacuums require air supply lines that range from $\frac{3}{8}$ "ID up to $\frac{3}{4}$ "ID in size, depending upon the model. Please refer to the Guardair product catalog or website for recommended air supply line size. To ensure adequate performance, a larger size than required air supply line can always be employed, but never a smaller size.

What about connectors and fittings?

Be sure that fittings and/or connectors do not restrict the air supply flow in any manner. Use fittings that are rated the same size, or larger, for a given air supply line. Whenever recommended, use "high flow" connectors.

How often do I need to replace the filter and/or muffler?

Filters should be inspected regularly. Shake out and clean, or replace, clogged filters. Immediately replace ripped or torn filters.

Mufflers should also be inspected regularly. Mufflers do not normally need to be replaced unless dust/dirt is getting past the filter. Shake out the muffler if covered with dirt/dust and replace if necessary.

Can I use any 55 gallon drum with my Guardair vacuum generating head?

Guardair vacuum generating heads produce extremely powerful suction. Generating vacuum lift of up to 213 inches of water at 100 psi, they have been known to implode 55 gallon steel drums. Therefore, Guardair recommends that drums be constructed of 19 gauge steel or heavier.

Does Guardair offer HEPA and ULPA filters?

Yes.

What is the maximum ambient temperature in which I can operate my Guardair vacuum?

200°F. PVC Cement for Heavy-Duty Hose is 140°F.

How do vacuums generate static electricity?

Both electric and compressed air-powered and electric have the potential to generate static electricity. Static electricity is generated by the movement of air over the internal surface of a vacuum hose. The amount generated is a function of the composition and humidity of the air, air velocity, and the vacuum hose material.

TROUBLESHOOTING

Why doesn't my vacuum seem to have any suction?

By far the most common problem is undersized air supply lines, or restrictions due to undersized fittings and/or connectors. Some combination of these two issues will result in inadequate air being supplied to the vacuum. In addition, other things to look for include low plant air pressure (less than 80 psi), a dirty filter, a clogged vacuum hose, or a faulty vacuum head gasket.

When initially turned on, my Guardair vacuum operates fine. After a relatively short period of time, the performance begins to degrade. What's the cause?

Your air compressor probably does not have enough capacity and is undersized. Please refer to the compressed air requirements for each vacuum and the minimum recommended size air compressor.

PARTS/ACCESSORIES

Does Guardair offer replacement parts and/or repair kits for vacuums?

We carry replacement parts for the vast majority of our vacuums.



GUARDAIR®

47 Veterans Drive • Chicopee, MA 01022-1062

Toll-Free: 800-482-7324 | Local: 413-594-4400 | Fax: 413-594-4884

Email: info@guardair.com • guardair.com

