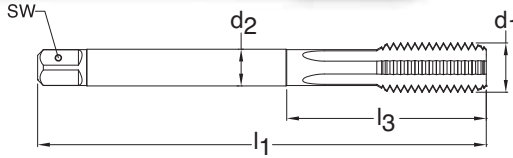


# METRIC FINE

**NEW**



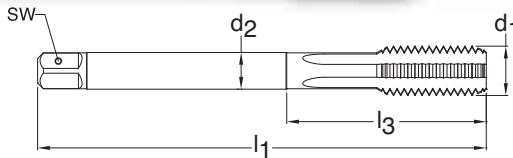
**Series 169**  
**Standard DIN 374**  
**Tool Material HSS-E (Cobalt)**  
**Flute Straight flute**  
**Chamfer Form C • 2-3**  
**Class of Fit 6HX**



- Through holes**
- Blind holes**
- TiAlN coated**
- External cooling**

d1 - P	D Limits	Tap Drill Range mm	Number of Flutes	d2 mm	SW mm	l1 mm	l3 mm	Order Code	EDP Number	Stock
M8 X 1.00	D5/D6	6.917 - 7.153	4	6.00	4.90	90.00	N/A	8.005	9001690080050	●
M10 X 1.00	D5/D6	8.917 - 9.153	4	7.00	5.50	90.00	N/A	10.005	9001690100050	○
M12 X 1.50	D5/D6	10.376 - 10.676	4	9.00	7.00	100.00	N/A	12.007	9001690120070	●
M14 X 1.50	D5/D6	12.376 - 12.676	4	11.00	9.00	100.00	N/A	14.007	9001690140070	●
M16 X 1.50	D5/D6	14.376 - 14.676	4	12.00	9.00	100.00	N/A	16.007	9001690160070	●
M18 X 1.50	D5/D6	16.376 - 16.676	5	14.00	11.00	110.00	N/A	18.007	9001690180070	○
M20 X 1.50	D6/D7	18.376 - 18.676	5	16.00	12.00	125.00	N/A	20.007	9001690200070	●
M22 X 1.50	D6/D7	20.376 - 20.676	5	18.00	14.50	125.00	N/A	22.007	9001690220070	○

# METRIC FINE



**Series 347**  
**Standard DIN 374**  
**Tool Material HSS-E (Cobalt)**  
**Flute Straight flute**  
**Chamfer Form C • 2-3**  
**Class of Fit 6HX**



- Blind holes**
- TiAlN coated**
- Axial coolant**

d1 - P	D Limits	Tap Drill Range mm	Number of Flutes	d2 mm	SW mm	l1 mm	l3 mm	Order Code	EDP Number	Stock
M8 X 1.00	D5/D6	6.917 - 7.153	4	6.00	4.90	90.00	N/A	8.005	9003470080050	●
M10 X 1.00	D5/D6	8.917 - 9.153	4	7.00	5.50	90.00	N/A	10.005	9003470100050	○
M12 X 1.00	D5/D6	10.917 - 11.153	4	9.00	7.00	100.00	N/A	12.005	9003470120050	○
M12 X 1.50	D5/D6	10.376 - 10.676	4	9.00	7.00	100.00	N/A	12.007	9003470120070	●
M14 X 1.50	D5/D6	12.376 - 12.676	4	11.00	9.00	100.00	N/A	14.007	9003470140070	●
M16 X 1.50	D5/D6	14.376 - 14.676	4	12.00	9.00	100.00	N/A	16.007	9003470160070	●
M18 X 1.50	D5/D6	16.376 - 16.676	5	14.00	11.00	110.00	N/A	18.007	9003470180070	●
M20 X 1.50	D7/D8	18.376 - 18.676	5	16.00	12.00	125.00	N/A	20.007	9003470200070	○
M22 X 1.50	D7/D8	20.376 - 20.676	5	18.00	14.50	125.00	N/A	22.007	9003470220070	●
M24 X 1.50	D7/D8	22.376 - 22.676	5	18.00	14.50	140.00	N/A	24.007	9003470240070	○