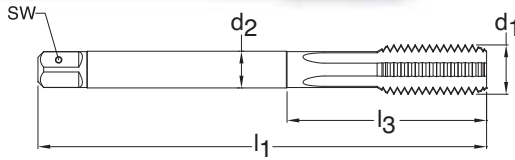


# METRIC

**NEW**



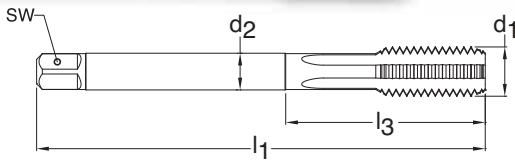
**Series 1919**  
**Standard DIN 376**  
**Tool Material HSS-E (Cobalt)**  
**Flute Straight flute**  
**Chamfer Form C • 2-3**  
**Class of Fit 6HX**



**Through holes**    **Blind holes**    **TiAlN coated**    **External cooling**

d1 - P	D Limits	Tap Drill Range mm	Number of Flutes	d2 mm	SW mm	l1 mm	l3 mm	Order Code	EDP Number	Stock
M6 X 1.00	D5/D6	4.917 - 5.153	4	4.50	3.40	80.00	N/A	6.000	9019190060000	○
M8 X 1.25	D5/D6	6.647 - 6.912	4	6.00	4.90	90.00	N/A	8.000	9019190080000	●
M10 X 1.50	D5/D6	8.376 - 8.676	4	7.00	5.50	100.00	N/A	10.000	9019190100000	●
M12 X 1.75	D6/D7	10.106 - 10.441	4	9.00	7.00	110.00	N/A	12.000	9019190120000	●
M14 X 2.00	D6/D7	11.835 - 12.210	4	11.00	9.00	110.00	N/A	14.000	9019190140000	○
M16 X 2.00	D7/D8	13.835 - 14.210	4	12.00	9.00	110.00	N/A	16.000	9019190160000	○
M18 X 2.50	D7/D8	15.294 - 15.744	5	14.00	11.00	125.00	N/A	18.000	9019190180000	○
M20 X 2.50	D7/D8	17.294 - 17.744	5	16.00	12.00	140.00	N/A	20.000	9019190200000	○

# METRIC



**Series 319**  
**Standard DIN 376**  
**Tool Material HSS-E (Cobalt)**  
**Flute Straight flute**  
**Chamfer Form C • 2-3**  
**Class of Fit 6HX**



**Blind holes**    **TiAlN coated**    **Axial coolant**

d1 - P	D Limits	Tap Drill Range mm	Number of Flutes	d2 mm	SW mm	l1 mm	l3 mm	Order Code	EDP Number	Stock
M12 X 1.75	D6/D7	10.106 - 10.441	4	9.00	7.00	110.00	N/A	12.000	9003190120000	●
M14 X 2.00	D6/D7	11.835 - 12.210	4	11.00	9.00	110.00	N/A	14.000	9003190140000	●
M16 X 2.00	D7/D8	13.835 - 14.210	4	12.00	9.00	110.00	N/A	16.000	9003190160000	●
M18 X 2.50	D7/D8	15.294 - 15.744	5	14.00	11.00	125.00	N/A	18.000	9003190180000	○
M20 X 2.50	D7/D8	17.294 - 17.744	5	16.00	12.00	140.00	N/A	20.000	9003190200000	●

Cast Iron and Abrasive Materials