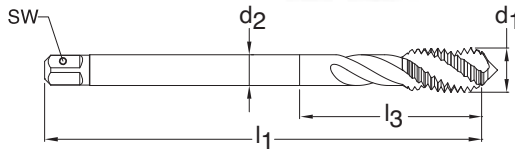


# METRIC



**Series 910**  
**Standard DIN 376**  
**Tool Material HSS-E PM**  
**Spiral Flute 40° Helix**  
**Chamfer Form C • 2-3**  
**Class of Fit ISO2 (6H)**



**Blind holes**



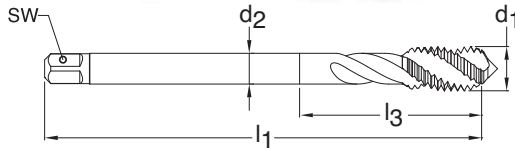
**Bright finish**



**External cooling**

d1 - P	D Limits	Tap Drill Range mm	Number of Flutes	d2 mm	SW mm	l1 mm	l3 mm	Order Code	EDP Number	Stock
M12 X 1.75	D5/D6	10.106 - 10.441	3	9.00	7.00	110.00	N/A	12.000	9009100120000	●
M14 X 2.00	D5/D6	11.835 - 12.210	3	11.00	9.00	110.00	N/A	14.000	9009100140000	○
M16 X 2.00	D6/D7	13.835 - 14.210	4	12.00	9.00	110.00	N/A	16.000	9009100160000	●
M20 X 2.50	D6/D7	17.294 - 17.744	4	16.00	12.00	140.00	N/A	20.000	9009100200000	○
M24 X 3.00	D7/D8	20.752 - 21.252	4	18.00	14.50	160.00	N/A	24.000	9009100240000	●

# METRIC FINE



**Series 936**  
**Standard DIN 374**  
**Tool Material HSS-E PM**  
**Spiral Flute 40° Helix**  
**Chamfer Form C • 2-3**  
**Class of Fit ISO2 (6H)**



**Blind holes**



**Bright finish**



**External cooling**

d1 - P	D Limits	Tap Drill Range mm	Number of Flutes	d2 mm	SW mm	l1 mm	l3 mm	Order Code	EDP Number	Stock
M8 X 1.00	D4/D5	6.917 - 7.153	3	6.00	4.90	90.00	N/A	8.005	9009360080050	●
M10 X 1.00	D4/D5	8.917 - 9.153	3	7.00	5.50	90.00	N/A	10.005	9009360100050	●
M12 X 1.00	D4/D5	10.917 - 11.153	3	9.00	7.00	100.00	N/A	12.005	9009360120050	○
M12 X 1.50	D4/D5	10.376 - 10.676	3	9.00	7.00	100.00	N/A	12.007	9009360120070	●
M14 X 1.50	D4/D5	12.376 - 12.676	3	11.00	9.00	100.00	N/A	14.007	9009360140070	●
M16 X 1.50	D4/D5	14.376 - 14.676	4	12.00	9.00	100.00	N/A	16.007	9009360160070	●
M18 X 1.50	D4/D5	16.376 - 16.676	4	14.00	11.00	110.00	N/A	18.007	9009360180070	●
M20 X 1.50	D6/D7	18.376 - 18.676	4	16.00	12.00	125.00	N/A	20.007	9009360200070	○

"Tap drill Range" given is per the Class of Fit shown per Series #  
 Additional Tap Drill sizes & percent of thread engagement can be found on pages 199 - 206.