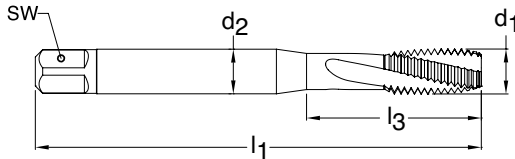


METRIC



Blind holes



Bright finish



Axial coolant

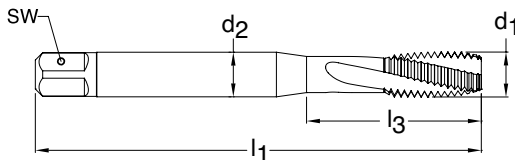
Series 971
Standard DIN 371
Tool Material Carbide
Spiral Flute 15° Helix
Chamfer Form C • 2-3
Class of Fit 6HX



d1 - P	D Limits	Tap Drill Range inch	Number of Flutes	d2 inch	SW inch	l1 inch	l3 inch	Order Code	EDP Number	Stock
*M3 X 0.50	D3/D4	2.459 - 2.599	3	3.50	2.70	56.00	18.00	3.000	9009710030000	○
*M4 X 0.70	D4/D5	3.242 - 3.422	3	4.50	3.40	63.00	21.00	4.000	9009710040000	○
M5 X 0.80	D4/D5	4.134 - 4.334	3	6.00	4.90	70.00	25.00	5.000	9009710050000	●
M6 X 1.00	D5/D6	4.917 - 5.153	3	6.00	4.90	80.00	30.00	6.000	9009710060000	●
M8 X 1.25	D5/D6	6.647 - 6.912	3	8.00	6.20	90.00	35.00	8.000	9009710080000	●
M10 X 1.50	D5/D6	8.376 - 8.676	3	10.00	8.00	100.00	39.00	10.000	9009710100000	●

* M3, M4 no axial coolant

METRIC FINE



Blind holes



Bright finish



Axial coolant

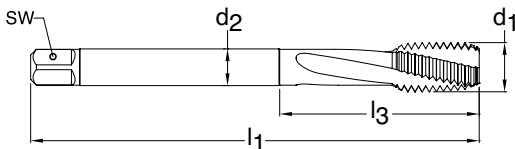
Series 977
Standard DIN 371
Tool Material Carbide
Spiral Flute 15° Helix
Chamfer Form C • 2-3
Class of Fit 6HX



d1 - P	D Limits	Tap Drill Range inch	Number of Flutes	d2 inch	SW inch	l1 inch	l3 inch	Order Code	EDP Number	Stock
*M4 X 0.50	D4/D5	3.459 - 3.599	3	4.50	3.40	63.00	21.00	4.003	9009770040030	○
M5 X 0.50	D4/D5	4.459 - 4.599	3	6.00	4.90	70.00	25.00	5.003	9009770050030	○
M6 X 0.50	D4/D5	5.460 - 5.600	3	6.00	4.90	80.00	30.00	6.003	9009770060030	○
M8 X 1.00	D5/D6	6.917 - 7.153	3	8.00	6.20	90.00	35.00	8.005	9009770080050	○
M10 X 1.00	D5/D6	8.917 - 9.153	3	10.00	8.00	90.00	35.00	10.005	9009770100050	○

* M3, M4 no axial coolant

METRIC FINE



Blind holes



Bright finish



Axial coolant

Series 978
Standard DIN 374
Tool Material Carbide
Spiral Flute 15° Helix
Chamfer Form C • 2-3
Class of Fit 6HX



d1 - P	D Limits	Tap Drill Range inch	Number of Flutes	d2 inch	SW inch	l1 inch	l3 inch	Order Code	EDP Number	Stock
*M4 X 0.50	D4/D5	3.459 - 3.599	3	4.50	3.40	63.00	21.00	4.003	9009770040030	○
M5 X 0.50	D4/D5	4.459 - 4.599	3	6.00	4.90	70.00	25.00	5.003	9009770050030	○
M6 X 0.50	D4/D5	5.460 - 5.600	3	6.00	4.90	80.00	30.00	6.003	9009770060030	○
M8 X 1.00	D5/D6	6.917 - 7.153	3	8.00	6.20	90.00	35.00	8.005	9009770080050	○
M10 X 1.00	D5/D6	8.917 - 9.153	3	10.00	8.00	90.00	35.00	10.005	9009770100050	○

* M3, M4 no axial coolant