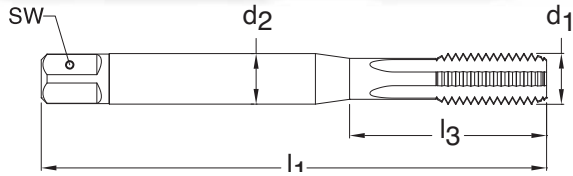


METRIC



Blind holes



TiCN coated



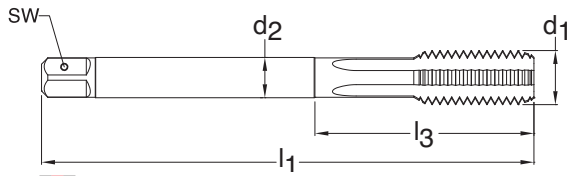
Axial coolant

Series 1091
Standard DIN 371
Tool Material HSS-E-PM
Flute Straight Flute
Chamfer Form E • 1.5 - 2
Class of Fit 6HX



d1 - P	D Limits	Tap Drill Range mm	Number of Flutes	d2 mm	SW mm	l1 mm	l3 mm	Order Code	EDP Number	Stock
M5 X 0.80	D4/D5	4.134 - 4.334	3	6.00	4.90	70.00	25.00	5.000	9010910050000	○
M6 X 1.00	D5/D6	4.917 - 5.153	3	6.00	4.90	80.00	30.00	6.000	9010910060000	●
M8 X 1.25	D5/D6	6.647 - 6.912	3	8.00	6.20	90.00	35.00	8.000	9010910080000	●
M10 X 1.50	D5/D6	8.376 - 8.676	3	10.00	8.00	100.00	39.00	10.000	9010910100000	●

METRIC



Blind holes



TiCN coated



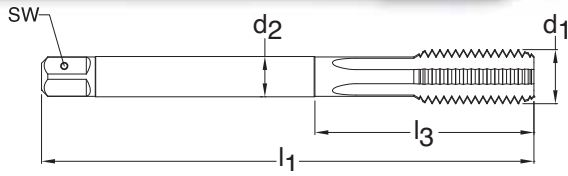
Axial coolant

Series 4165
Standard DIN 376
Tool Material HSS-E-PM
Flute Straight Flute
Chamfer Form E • 1.5 - 2
Class of Fit 6HX



d1 - P	D Limits	Tap Drill Range mm	Number of Flutes	d2 mm	SW mm	l1 mm	l3 mm	Order Code	EDP Number	Stock
M10 X 1.50	D5/D6	8.376 - 8.676	3	7.00	5.50	100.00	N/A	10.000	9041650100000	○
M12 X 1.75	D6/D7	10.106 - 10.441	3	9.00	7.00	110.00	N/A	12.000	9041650120000	○
M16 X 2.00	D7/D8	13.835 - 14.210	4	12.00	9.00	110.00	N/A	16.000	9041650160000	○
M20 X 2.50	D7/D8	17.294 - 17.744	4	16.00	12.00	140.00	N/A	20.000	9041650200000	○

METRIC FINE



Blind holes



TiCN coated



Axial coolant

Series 1007
Standard DIN 374
Tool Material HSS-E-PM
Flute Straight Flute
Chamfer Form E • 1.5 - 2
Class of Fit 6HX



d1 - P	D Limits	Tap Drill Range mm	Number of Flutes	d2 mm	SW mm	l1 mm	l3 mm	Order Code	EDP Number	Stock
M5 X 0.50	D4/D5	4.459 - 4.599	3	3.50	2.70	70.00	N/A	5.003	9010070050030	○
M6 X 0.50	D5/D6	5.460 - 5.600	3	4.50	3.40	80.00	N/A	6.003	9010070060030	○
M6 X 0.75	D5/D6	5.188 - 5.378	3	4.50	3.40	80.00	N/A	6.004	9010070060040	○
M8 X 0.75	D5/D6	7.188 - 7.378	3	6.00	4.90	80.00	N/A	8.004	9010070080040	○
M8 X 1.00	D5/D6	6.917 - 7.153	3	6.00	4.90	90.00	N/A	8.005	9010070080050	●
M9 X 1.00	D5/D6	7.917 - 8.153	3	7.00	5.50	90.00	N/A	9.005	9010070090050	●
M10 X 1.00	D5/D6	8.917 - 9.153	3	7.00	5.50	90.00	N/A	10.005	9010070100050	●
M10 X 1.25	D5/D6	8.647 - 8.912	3	7.00	5.50	100.00	N/A	10.006	9010070100060	●
M12 X 1.00	D5/D6	10.917 - 11.153	3	9.00	7.00	100.00	N/A	12.005	9010070120050	○
M12 X 1.25	D5/D6	10.647 - 10.912	3	9.00	7.00	100.00	N/A	12.006	9010070120060	●
M12 X 1.50	D5/D6	10.376 - 10.676	3	9.00	7.00	100.00	N/A	12.007	9010070120070	●
M14 X 1.00	D5/D6	12.917 - 13.153	3	11.00	9.00	100.00	N/A	14.005	9010070140050	○
M14 X 1.25	D5/D6	12.647 - 12.912	3	11.00	9.00	100.00	N/A	14.006	9010070140060	●
M14 X 1.50	D5/D6	12.376 - 12.676	3	11.00	9.00	100.00	N/A	14.007	9010070140070	●
M16 X 1.00	D5/D6	14.917 - 15.153	4	12.00	9.00	100.00	N/A	16.005	9010070160050	○
M16 X 1.50	D5/D6	14.376 - 14.676	4	12.00	9.00	100.00	N/A	16.007	9010070160070	●

Additional Tap Drill sizes & percent of thread engagement can be found on pages 199 - 206.