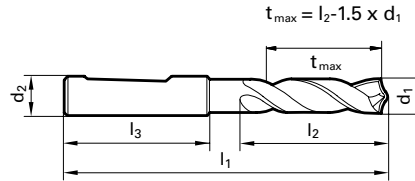




Tool material **Solid Carbide**
Surface **S**

- P** Steel ● web thinning $\geq \varnothing 3.000$ • facet point grinding • main cutting edge form straight • optimized cutting geometry
 - M** Stainless steel ○
 - K** Cast iron ● structural and case hardened steels • free-cutting steels, heat-treatable steels • alloyed steels up to 1200 N/mm² • cast materials • bronze, brass
 - N** Aluminum ○ • high-alloyed AlSi-alloys
 - S** Titanium alloys ○
 - H** Hardened steel ○
- =Optimal
○=Limited



For L3 dimensions per DIN 6537, please see page 468
Speeds and feeds information on pg. 551

Diameter (d1)			d2	l1	t _{max}	l2	EDP #	
inch	wire/ltr	mm	mm	mm	mm	mm		
0.1181		3.00	6.00	62.00	15.50	20.00	9011840030000	
0.1220		3.10	6.00	62.00	15.35	20.00	9011840031000	
0.1248	1/8	3.17	6.00	62.00	15.25	20.00	9011840031700	
0.1260		3.20	6.00	62.00	15.20	20.00	9011840032000	
0.1299		3.30	6.00	62.00	15.05	20.00	9011840033000	
0.1339		3.40	6.00	62.00	14.90	20.00	9011840034000	
0.1378		3.50	6.00	62.00	14.75	20.00	9011840035000	
0.1406	9/64	#28	3.57	6.00	62.00	14.65	20.00	9011840035700
0.1417		3.60	6.00	62.00	14.60	20.00	9011840036000	
0.1457		3.70	6.00	62.00	14.45	20.00	9011840037000	
0.1496		#25	3.80	6.00	66.00	18.30	24.00	9011840038000
0.1535		3.90	6.00	66.00	18.15	24.00	9011840039000	
0.1563	5/32	3.97	6.00	66.00	18.05	24.00	9011840039700	
0.1575		4.00	6.00	66.00	18.00	24.00	9011840040000	
0.1614		4.10	6.00	66.00	17.85	24.00	9011840041000	
0.1654		4.20	6.00	66.00	17.70	24.00	9011840042000	
0.1693		#18	4.30	6.00	66.00	17.55	24.00	9011840043000
0.1720	11/64	4.37	6.00	66.00	17.45	24.00	9011840043700	
0.1732		4.40	6.00	66.00	17.40	24.00	9011840044000	
0.1772		#16	4.50	6.00	66.00	17.25	24.00	9011840045000
0.1811		4.60	6.00	66.00	17.10	24.00	9011840046000	
0.1850		#13	4.70	6.00	66.00	16.95	24.00	9011840047000
0.1874	3/16	4.76	6.00	66.00	20.86	28.00	9011840047600	
0.1890		#12	4.80	6.00	66.00	20.80	28.00	9011840048000
0.1929		4.90	6.00	66.00	20.65	28.00	9011840049000	
0.1969		5.00	6.00	66.00	20.50	28.00	9011840050000	
0.2008		5.10	6.00	66.00	20.35	28.00	9011840051000	
0.2031	13/64	5.16	6.00	66.00	20.26	28.00	9011840051600	
0.2047		5.20	6.00	66.00	20.20	28.00	9011840052000	
0.2087		5.30	6.00	66.00	20.05	28.00	9011840053000	
0.2126		5.40	6.00	66.00	19.90	28.00	9011840054000	
0.2165		5.50	6.00	66.00	19.75	28.00	9011840055000	
0.2189	7/32	5.56	6.00	66.00	19.66	28.00	9011840055600	
0.2205		5.60	6.00	66.00	19.60	28.00	9011840056000	
0.2244		5.70	6.00	66.00	19.45	28.00	9011840057000	
0.2283		5.80	6.00	66.00	19.30	28.00	9011840058000	
0.2323		5.90	6.00	66.00	19.15	28.00	9011840059000	
0.2343	15/64	5.95	6.00	66.00	19.08	28.00	9011840059500	
0.2362		6.00	6.00	66.00	19.00	28.00	9011840060000	
0.2402		6.10	8.00	79.00	24.85	34.00	9011840061000	
0.2441		6.20	8.00	79.00	24.70	34.00	9011840062000	
0.2480		6.30	8.00	79.00	24.55	34.00	9011840063000	

Diameter (d1)			d2	l1	t _{max}	l2	EDP #	
inch	wire/ltr	mm	mm	mm	mm	mm		
0.2500	1/4	E	6.35	8.00	79.00	24.48	34.00	9011840063500
0.2520			6.40	8.00	79.00	24.40	34.00	9011840064000
0.2559			6.50	8.00	79.00	24.25	34.00	9011840065000
0.2598			6.60	8.00	79.00	24.10	34.00	9011840066000
0.2638			6.70	8.00	79.00	23.95	34.00	9011840067000
0.2657	17/64	H	6.75	8.00	79.00	23.88	34.00	9011840067500
0.2677			6.80	8.00	79.00	23.80	34.00	9011840068000
0.2717		I	6.90	8.00	79.00	23.65	34.00	9011840069000
0.2756			7.00	8.00	79.00	23.50	34.00	9011840070000
0.2795			7.10	8.00	79.00	30.35	41.00	9011840071000
0.2811	9/32	K	7.14	8.00	79.00	30.29	41.00	9011840071400
0.2835			7.20	8.00	79.00	30.20	41.00	9011840072000
0.2874			7.30	8.00	79.00	30.05	41.00	9011840073000
0.2913			7.40	8.00	79.00	29.90	41.00	9011840074000
0.2953			7.50	8.00	79.00	29.75	41.00	9011840075000
0.2969	19/64		7.54	8.00	79.00	29.69	41.00	9011840075400
0.2992			7.60	8.00	79.00	29.60	41.00	9011840076000
0.3031			7.70	8.00	79.00	29.45	41.00	9011840077000
0.3071			7.80	8.00	79.00	29.30	41.00	9011840078000
0.3110			7.90	8.00	79.00	29.15	41.00	9011840079000
0.3126	5/16		7.94	8.00	79.00	29.09	41.00	9011840079400
0.3150			8.00	8.00	79.00	29.00	41.00	9011840080000
0.3189			8.10	10.00	89.00	34.85	47.00	9011840081000
0.3228		P	8.20	10.00	89.00	34.70	47.00	9011840082000
0.3268			8.30	10.00	89.00	34.55	47.00	9011840083000
0.3280	21/64		8.33	10.00	89.00	34.51	47.00	9011840083300
0.3307			8.40	10.00	89.00	34.40	47.00	9011840084000
0.3346			8.50	10.00	89.00	34.25	47.00	9011840085000
0.3386			8.60	10.00	89.00	34.10	47.00	9011840086000
0.3425			8.70	10.00	89.00	33.95	47.00	9011840087000
0.3437	11/32		8.73	10.00	89.00	33.91	47.00	9011840087300
0.3465			8.80	10.00	89.00	33.80	47.00	9011840088000
0.3504			8.90	10.00	89.00	33.65	47.00	9011840089000
0.3543			9.00	10.00	89.00	33.50	47.00	9011840090000
0.3583			9.10	10.00	89.00	33.35	47.00	9011840091000
0.3594	23/64		9.13	10.00	89.00	33.31	47.00	9011840091300
0.3622			9.20	10.00	89.00	33.20	47.00	9011840092000
0.3661			9.30	10.00	89.00	33.05	47.00	9011840093000
0.3701			9.40	10.00	89.00	32.90	47.00	9011840094000
0.3740			9.50	10.00	89.00	32.75	47.00	9011840095000
0.3748	3/8		9.52	10.00	89.00	32.72	47.00	9011840095200
0.3780			9.60	10.00	89.00	32.60	47.00	9011840096000

Diameter (d1)			d2 mm	l1 mm	t _{max} mm	l2 mm	EDP #
inch	wire/ltr	mm					
0.3819		9.70	10.00	89.00	32.45	47.00	9011840097000
0.3858	W	9.80	10.00	89.00	32.30	47.00	9011840098000
0.3898		9.90	10.00	89.00	32.15	47.00	9011840099000
0.3906	25/64	9.92	10.00	89.00	32.12	47.00	9011840099200
0.3937		10.00	10.00	89.00	32.00	47.00	9011840100000
0.3976		10.10	12.00	102.00	39.85	55.00	9011840101000
0.4016		10.20	12.00	102.00	39.70	55.00	9011840102000
0.4055		10.30	12.00	102.00	39.55	55.00	9011840103000
0.4063	13/32	10.32	12.00	102.00	39.52	55.00	9011840103200
0.4094		10.40	12.00	102.00	39.40	55.00	9011840104000
0.4134		10.50	12.00	102.00	39.25	55.00	9011840105000
0.4173		10.60	12.00	102.00	39.10	55.00	9011840106000
0.4213		10.70	12.00	102.00	38.95	55.00	9011840107000
0.4220	27/64	10.72	12.00	102.00	38.92	55.00	9011840107200
0.4252		10.80	12.00	102.00	38.80	55.00	9011840108000
0.4291		10.90	12.00	102.00	38.65	55.00	9011840109000
0.4331		11.00	12.00	102.00	38.50	55.00	9011840110000
0.4370		11.10	12.00	102.00	38.35	55.00	9011840111000
0.4374	7/16	11.11	12.00	102.00	38.34	55.00	9011840111100
0.4409		11.20	12.00	102.00	38.20	55.00	9011840112000
0.4449		11.30	12.00	102.00	38.05	55.00	9011840113000
0.4488		11.40	12.00	102.00	37.90	55.00	9011840114000
0.4528		11.50	12.00	102.00	37.75	55.00	9011840115000
0.4531	29/64	11.51	12.00	102.00	37.74	55.00	9011840115100
0.4567		11.60	12.00	102.00	37.60	55.00	9011840116000
0.4606		11.70	12.00	102.00	37.45	55.00	9011840117000
0.4646		11.80	12.00	102.00	37.30	55.00	9011840118000
0.4685		11.90	12.00	102.00	37.15	55.00	9011840119000
0.4689	15/32	11.91	12.00	102.00	37.14	55.00	9011840119100
0.4724		12.00	12.00	102.00	37.00	55.00	9011840120000
0.4764		12.10	14.00	107.00	41.85	60.00	9011840121000
0.4803		12.20	14.00	107.00	41.70	60.00	9011840122000
0.4843	31/64	12.30	14.00	107.00	41.55	60.00	9011840123000
0.4882		12.40	14.00	107.00	41.40	60.00	9011840124000
0.4921		12.50	14.00	107.00	41.25	60.00	9011840125000
0.4961		12.60	14.00	107.00	41.10	60.00	9011840126000
0.5000	1/2	12.70	14.00	107.00	40.95	60.00	9011840127000
0.5039		12.80	14.00	107.00	40.80	60.00	9011840128000
0.5118		13.00	14.00	107.00	40.50	60.00	9011840130000
0.5157	33/64	13.10	14.00	107.00	40.35	60.00	9011840131000
0.5197		13.20	14.00	107.00	40.20	60.00	9011840132000
0.5236		13.30	14.00	107.00	40.05	60.00	9011840133000
0.5315		13.50	14.00	107.00	39.75	60.00	9011840135000
0.5354		13.60	14.00	107.00	39.60	60.00	9011840136000
0.5394		13.70	14.00	107.00	39.45	60.00	9011840137000
0.5433		13.80	14.00	107.00	39.30	60.00	9011840138000
0.5469	35/64	13.89	14.00	107.00	39.17	60.00	9011840138900

Diameter (d1)			d2 mm	l1 mm	t _{max} mm	l2 mm	EDP #
inch	wire/ltr	mm					
0.5472		13.90	14.00	107.00	39.15	60.00	9011840139000
0.5512		14.00	14.00	107.00	39.00	60.00	9011840140000
0.5591		14.20	16.00	115.00	43.70	65.00	9011840142000
0.5626	9/16	14.29	16.00	115.00	43.57	65.00	9011840142900
0.5630		14.30	16.00	115.00	43.55	65.00	9011840143000
0.5669		14.40	16.00	115.00	43.40	65.00	9011840144000
0.5709		14.50	16.00	115.00	43.25	65.00	9011840145000
0.5748		14.60	16.00	115.00	43.10	65.00	9011840146000
0.5787		14.70	16.00	115.00	42.95	65.00	9011840147000
0.5827		14.80	16.00	115.00	42.80	65.00	9011840148000
0.5906		15.00	16.00	115.00	42.50	65.00	9011840150000
0.5945		15.10	16.00	115.00	42.35	65.00	9011840151000
0.5984		15.20	16.00	115.00	42.20	65.00	9011840152000
0.6063		15.40	16.00	115.00	41.90	65.00	9011840154000
0.6094	39/64	15.48	16.00	115.00	41.78	65.00	9011840154800
0.6102		15.50	16.00	115.00	41.75	65.00	9011840155000
0.6142		15.60	16.00	115.00	41.60	65.00	9011840156000
0.6181		15.70	16.00	115.00	41.45	65.00	9011840157000
0.6220		15.80	16.00	115.00	41.30	65.00	9011840158000
0.6248	5/8	15.87	16.00	115.00	41.20	65.00	9011840158700
0.6260		15.90	16.00	115.00	41.15	65.00	9011840159000
0.6299		16.00	16.00	115.00	41.00	65.00	9011840160000
0.6339		16.10	18.00	123.00	48.85	73.00	9011840161000
0.6378		16.20	18.00	123.00	48.70	73.00	9011840162000
0.6406	41/64	16.27	18.00	123.00	48.60	73.00	9011840162700
0.6417		16.30	18.00	123.00	48.55	73.00	9011840163000
0.6496		16.50	18.00	123.00	48.25	73.00	9011840165000
0.6614		16.80	18.00	123.00	47.80	73.00	9011840168000
0.6693		17.00	18.00	123.00	47.50	73.00	9011840170000
0.6811		17.30	18.00	123.00	47.05	73.00	9011840173000
0.6874	11/16	17.46	18.00	123.00	46.81	73.00	9011840174600
0.6890		17.50	18.00	123.00	46.75	73.00	9011840175000
0.6969		17.70	18.00	123.00	46.45	73.00	9011840177000
0.7008		17.80	18.00	123.00	46.30	73.00	9011840178000
0.7031	45/64	17.86	18.00	123.00	46.21	73.00	9011840178600
0.7087		18.00	18.00	123.00	46.00	73.00	9011840180000
0.7126		18.10	20.00	131.00	51.85	79.00	9011840181000
0.7205		18.30	20.00	131.00	51.55	79.00	9011840183000
0.7283		18.50	20.00	131.00	51.25	79.00	9011840185000
0.7343	47/64	18.65	20.00	131.00	51.03	79.00	9011840186500
0.7480		19.00	20.00	131.00	50.50	79.00	9011840190000
0.7500	3/4	19.05	20.00	131.00	50.43	79.00	9011840190500
0.7559		19.20	20.00	131.00	50.20	79.00	9011840192000
0.7677		19.50	20.00	131.00	49.75	79.00	9011840195000
0.7717		19.60	20.00	131.00	49.60	79.00	9011840196000
0.7795		19.80	20.00	131.00	49.30	79.00	9011840198000
0.7874		20.00	20.00	131.00	49.00	79.00	9011840200000