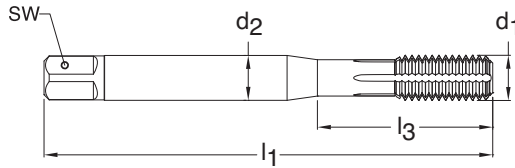


# METRIC



Through holes



Blind holes

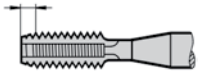


TiN coated



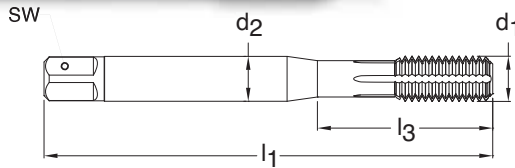
Radial coolant

**Series 342**  
**Standard DIN 376**  
**Tool Material HSS-E PM**  
**Flute Oil grooves**  
**Chamfer Form C • 2-3**  
**Class of Fit 6HX**



d1 - P	D Limits	Tap Drill Range mm	Number of Flutes	d2 mm	SW mm	l1 mm	l3 mm	Order Code	EDP Number	Stock
M12 X 1.75	D11/D12	11.180 - 11.280	5	9.00	7.00	110.00	N/A	12.000	9003420120000	●
M14 X 2.00	D13/D14	13.070 - 13.160	6	11.00	9.00	110.00	N/A	14.000	9003420140000	●
M16 X 2.00	D13/D14	15.070 - 15.160	6	12.00	9.00	110.00	N/A	16.000	9003420160000	●

# METRIC



Through holes



Blind holes



TiAlN coated



Radial coolant

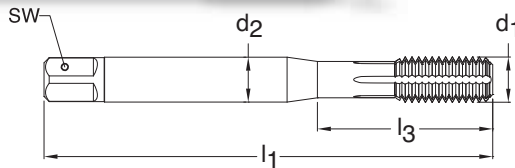
**Series 1719**  
**Standard DIN 376**  
**Tool Material HSS-E PM**  
**Flute Oil grooves**  
**Chamfer Form C • 2-3**  
**Class of Fit 6HX**



d1 - P	D Limits	Tap Drill Range mm	Number of Flutes	d2 mm	SW mm	l1 mm	l3 mm	Order Code	EDP Number	Stock
M12 X 1.75	D11/D12	11.180 - 11.280	5	9.00	7.00	110.00	N/A	12.000	9017190120000	○
M16 X 2.00	D13/D14	15.070 - 15.160	6	12.00	9.00	110.00	N/A	16.000	9017190160000	○
M20 X 2.50	D14/D15	18.850 - 19.000	7	16.00	12.00	140.00	N/A	20.000	9017190200000	●

# METRIC

**NEW**



Through holes



Blind holes

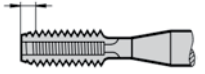


TiCN coated



Radial coolant

**Series 1271**  
**Standard DIN 376**  
**Tool Material HSS-E PM**  
**Flute Oil grooves**  
**Chamfer Form C • 2-3**  
**Class of Fit 6HX**



d1 - P	D Limits	Tap Drill Range mm	Number of Flutes	d2 mm	SW mm	l1 mm	l3 mm	Order Code	EDP Number	Stock
M12 X 1.75	D11/D12	11.180 - 11.280	5	9.00	7.00	110.00	N/A	12.000	9012710120000	●
M16 X 2.00	D13/D14	15.070 - 15.160	6	12.00	9.00	110.00	N/A	16.000	9012710160000	○
M18 X 2.50	D14/D15	16.850 - 17.000	6	14.00	11.00	125.00	N/A	18.000	9012710180000	○
M20 X 2.50	D14/D15	18.850 - 19.000	7	16.00	12.00	140.00	N/A	20.000	9012710200000	○