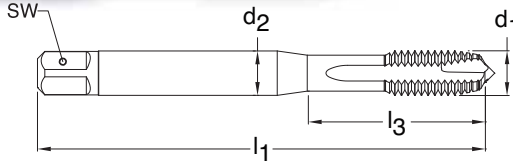
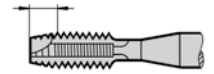


# METRIC



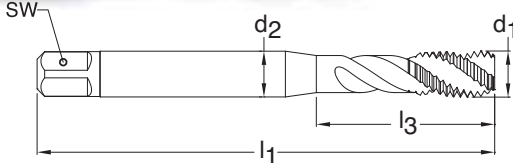
**Series 3912**  
**Standard ANSI**  
**Tool Material HSS-E (Cobalt)**  
**Spiral Point Straight flute**  
**Chamfer Form B • 3.5 - 5**  
**Class of Fit ISO 2(6H)**



**Through holes**      **Bright finish**      **External cooling**

d1 - P	D Limits	Tap Drill Range mm	Number of Flutes	d2 inch	SW inch	l1 inch	l3 inch	Order Code	EDP Number	Stock
M2 X 0.40	D2/D3	1.567 - 1.679	3	0.141	0.110	1.752	0.441	2.000	9039120020000	●
M3 X 0.50	D2/D3	2.459 - 2.599	3	0.141	0.110	1.941	0.709	3.000	9039120030000	●
M4 X 0.70	D3/D4	3.242 - 3.422	3	0.168	0.131	2.130	0.827	4.000	9039120040000	●
M5 X 0.80	D3/D4	4.134 - 4.334	3	0.194	0.152	2.382	0.945	5.000	9039120050000	●
M6 X 1.00	D4/D5	4.917 - 5.153	3	0.255	0.191	2.500	1.181	6.000	9039120060000	●
M8 X 1.25	D4/D5	6.647 - 6.912	3	0.318	0.238	2.721	1.377	8.000	9039120080000	●
M10 X 1.50	D4/D5	8.376 - 8.676	3	0.381	0.286	2.941	1.457	10.000	9039120100000	●
M12 X 1.75	D5/D6	10.106 - 10.441	4	0.367	0.275	3.382	N/A	12.000	9039120120000	●
M14 X 2.00	D5/D6	11.835 - 12.210	4	0.429	0.322	3.591	N/A	14.000	9039120140000	●
M16 X 2.00	D6/D7	13.835 - 14.210	4	0.480	0.360	3.811	N/A	16.000	9039120160000	●
M18 X 2.50	D6/D7	15.294 - 15.744	4	0.542	0.406	4.032	N/A	18.000	9039120180000	●
M20 X 2.50	D6/D7	17.294 - 17.744	4	0.652	0.489	4.469	N/A	20.000	9039120200000	●
M22 X 2.50	D6/D7	19.294 - 19.744	4	0.697	0.523	4.689	N/A	22.000	9039120220000	●
M24 X 3.00	D7/D8	20.752 - 21.252	4	0.760	0.570	4.910	N/A	24.000	9039120240000	●
M30 X 3.50	D7/D8	26.211 - 26.771	4	1.021	0.766	5.433	N/A	30.000	9039120300000	●

# METRIC



**Series 3918**  
**Standard ANSI**  
**Tool Material HSS-E (Cobalt)**  
**Spiral Flute 40° Helix**  
**Chamfer Form C • 2-3**  
**Class of Fit ISO 2(6H)**



**Blind holes**      **Bright finish**      **External cooling**

d1 - P	D Limits	Tap Drill Range mm	Number of Flutes	d2 inch	SW inch	l1 inch	l3 inch	Order Code	EDP Number	Stock
M2 X 0.40	D2/D3	1.567 - 1.679	3	0.141	0.110	1.752	0.441	2.000	9039180020000	●
M3 X 0.50	D2/D3	2.459 - 2.599	3	0.141	0.110	1.941	0.709	3.000	9039180030000	●
M4 X 0.70	D3/D4	3.242 - 3.422	3	0.168	0.131	2.130	0.827	4.000	9039180040000	●
M5 X 0.80	D3/D4	4.134 - 4.334	3	0.194	0.152	2.382	0.945	5.000	9039180050000	●
M6 X 1.00	D4/D5	4.917 - 5.153	3	0.255	0.191	2.500	1.181	6.000	9039180060000	●
M8 X 1.25	D4/D5	6.647 - 6.912	3	0.318	0.238	2.721	1.377	8.000	9039180080000	●
M10 X 1.50	D4/D5	8.376 - 8.676	3	0.381	0.286	2.941	1.456	10.000	9039180100000	●
M12 X 1.75	D5/D6	10.106 - 10.441	3	0.367	0.275	3.382	N/A	12.000	9039180120000	●
M14 X 2.00	D5/D6	11.835 - 12.210	3	0.429	0.322	3.591	N/A	14.000	9039180140000	●
M16 X 2.00	D6/D7	13.835 - 14.210	4	0.480	0.360	3.811	N/A	16.000	9039180160000	●
M18 X 2.50	D6/D7	15.294 - 15.744	4	0.542	0.406	4.032	N/A	18.000	9039180180000	●
M20 X 2.50	D6/D7	17.294 - 17.744	4	0.652	0.489	4.469	N/A	20.000	9039180200000	●
M22 X 2.50	D6/D7	19.294 - 19.744	4	0.697	0.523	4.689	N/A	22.000	9039180220000	●
M24 X 3.00	D7/D8	20.752 - 21.252	4	0.760	0.570	4.910	N/A	24.000	9039180240000	●
M30 X 3.50	D8/D9	26.211 - 26.771	4	1.021	0.766	5.433	N/A	30.000	9039180300000	●