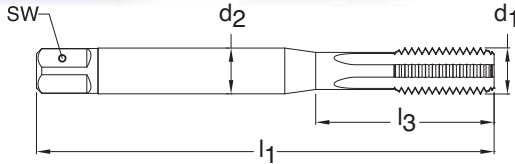


# UNF



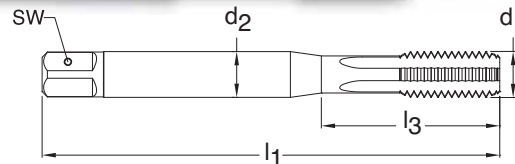
**Series 3938**  
**Standard ANSI**  
**Tool Material HSS-E (Cobalt)**  
**Flute Straight flute**  
**Chamfer Form C • 2-3**  
**Class of Fit 2B**



**Through holes**    **Blind holes**    **FIREX® coated**    **External cooling**

d1 - P	H Limits	Tap Drill Range inch	Number of Flutes	d2 inch	SW inch	l1 inch	l3 inch	Order Code	EDP Number	Stock
6-40	H2/H3	0.111 - 0.119	3	0.141	0.110	2.000	0.748	3.505	9039380035050	●
8-36	H2/H3	0.134 - 0.142	3	0.168	0.131	2.130	0.827	4.166	9039380041660	●
10-32	H3/H4	0.156 - 0.164	4	0.194	0.152	2.382	0.945	4.826	9039380048260	●
12-28	H3/H4	0.177 - 0.186	4	0.220	0.165	2.382	1.024	5.486	9039380054860	●
1/4-28	H3/H4	0.211 - 0.220	4	0.255	0.191	2.500	1.181	6.350	9039380063500	●
5/16-24	H3/H4	0.267 - 0.277	4	0.318	0.238	2.721	1.377	7.938	9039380079380	●
3/8-24	H3/H4	0.330 - 0.340	4	0.381	0.286	2.941	1.456	9.525	9039380095250	●
7/16-20	H4/H5	0.383 - 0.395	4	0.323	0.242	3.161	N/A	11.113	9039380111130	●
1/2-20	H4/H5	0.446 - 0.457	4	0.367	0.275	3.382	N/A	12.700	9039380127000	●
5/8-18	H4/H5	0.565 - 0.578	4	0.480	0.360	3.811	N/A	15.875	9039380158750	●

# UNF



**Series 4119**  
**Standard DIN/ANSI**  
**Tool Material Carbide**  
**Flute Straight flute**  
**Chamfer Form C • 2-3**  
**Class of Fit 2B**



**Blind holes**    **Bright finish**    **Axial coolant**

d1 - P	H Limits	Tap Drill Range inch	Number of Flutes	d2 inch	SW inch	l1 inch	l3 inch	Order Code	EDP Number	Stock
10-32	H3/H4	0.156 - 0.164	3	0.194	0.152	2.756	0.945	4.826	9041190048260	●
12-28	H3/H4	0.177 - 0.186	3	0.220	0.165	3.150	1.024	5.486	9041190054860	●
1/4-28	H3/H4	0.211 - 0.220	3	0.255	0.191	3.150	1.181	6.350	9041190063500	●
5/16-24	H3/H4	0.267 - 0.277	3	0.318	0.238	3.543	1.377	7.938	9041190079380	●
3/8-24	H3/H4	0.330 - 0.340	3	0.381	0.286	3.543	1.456	9.525	9041190095250	●
7/16-20	H4/H5	0.383 - 0.395	3	0.323	0.242	3.937	N/A	11.113	9041190111130	●
1/2-20	H4/H5	0.446 - 0.457	3	0.367	0.275	3.937	N/A	12.700	9041190127000	●
5/8-18	H4/H5	0.565 - 0.578	4	0.480	0.360	3.937	N/A	15.875	9041190158750	●
3/4-16	H5/H6	0.682 - 0.696	4	0.590	0.442	4.331	N/A	19.050	9041190190500	●

"Tap drill Range" given is per the Class of Fit shown per Series #  
 Additional Tap Drill sizes & percent of thread engagement can be found on pages 199 - 206.