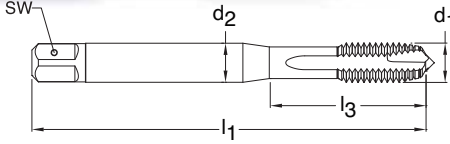


UNC



Through holes



TiCN coated



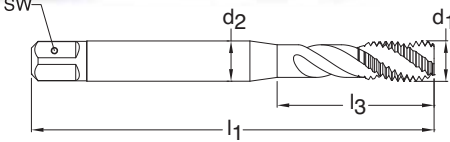
External cooling

Series 3946
Standard ANSI
Tool Material HSS-E (Cobalt)
Spiral Point Straight flute
Chamfer Form B • 3.5 - 5
Class of Fit 2B



d1 - P	H Limits	Tap Drill Range inch	Number of Flutes	d2 inch	SW inch	l1 inch	l3 inch	Order Code	EDP Number	Stock
2-56	H2/H3	0.067 - 0.074	3	0.141	0.110	1.752	0.441	2.184	9039460021840	●
3-48	H2/H3	0.076 - 0.084	3	0.141	0.110	1.811	0.500	2.515	9039460025150	●
4-40	H2/H3	0.085 - 0.094	3	0.141	0.110	1.882	0.709	2.845	9039460028450	●
5-40	H2/H3	0.098 - 0.106	3	0.141	0.110	1.941	0.709	3.175	9039460031750	●
6-32	H3/H4	0.104 - 0.114	3	0.141	0.110	2.000	0.748	3.505	9039460035050	●
8-32	H3/H4	0.130 - 0.139	3	0.168	0.131	2.130	0.827	4.166	9039460041660	●
10-24	H3/H4	0.145 - 0.155	3	0.194	0.152	2.382	0.945	4.826	9039460048260	●
12-24	H3/H4	0.171 - 0.181	3	0.220	0.165	2.382	1.024	5.486	9039460054860	●
1/4-20	H4/H5	0.196 - 0.207	3	0.255	0.191	2.500	1.181	6.350	9039460063500	●
5/16-18	H4/H5	0.252 - 0.265	3	0.318	0.238	2.721	1.377	7.938	9039460079380	●
3/8-16	H5/H6	0.307 - 0.321	3	0.381	0.286	2.941	1.456	9.525	9039460095250	●
7/16-14	H5/H6	0.360 - 0.376	3	0.323	0.242	3.161	N/A	11.113	9039460111130	●
1/2-13	H5/H6	0.417 - 0.434	4	0.367	0.275	3.382	N/A	12.700	9039460127000	●
9/16-12	H5/H6	0.472 - 0.490	4	0.429	0.322	3.591	N/A	14.288	9039460142880	●
5/8-11	H5/H6	0.527 - 0.546	4	0.480	0.360	3.811	N/A	15.875	9039460158750	●
3/4-10	H5/H6	0.642 - 0.663	4	0.590	0.442	4.252	N/A	19.050	9039460190500	●
7/8-9	H6/H7	0.755 - 0.778	4	0.697	0.523	4.689	N/A	22.225	9039460222250	●
1-8	H6/H7	0.865 - 0.890	4	0.800	0.600	5.130	N/A	25.400	9039460254000	●
1 1/8- 7	H6/H7	0.970 - 0.998	4	0.896	0.672	5.441	N/A	28.575	9039460285750	●
1 1/4- 7	H7/H8	1.095 - 1.123	4	1.021	0.766	5.748	N/A	31.750	9039460317500	●
1 3/8- 6	H7/H8	1.195 - 1.225	5	1.108	0.831	6.063	N/A	34.925	9039460349250	●
1 1/2-6	H7/H8	1.320 - 1.350	5	1.233	0.925	6.378	N/A	38.100	9039460381000	●

UNC



Blind holes

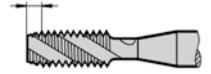


TiCN coated



External cooling

Series 3949
Standard ANSI
Tool Material HSS-E (Cobalt)
Spiral Flute 40° Helix
Chamfer Form C • 2-3
Class of Fit 2B



d1 - P	H Limits	Tap Drill Range inch	Number of Flutes	d2 inch	SW inch	l1 inch	l3 inch	Order Code	EDP Number	Stock
2-56	H2/H3	0.067 - 0.074	3	0.141	0.110	1.752	0.441	2.184	9039490021840	●
3-48	H2/H3	0.076 - 0.084	3	0.141	0.110	1.811	0.500	2.515	9039490025150	●
4-40	H2/H3	0.085 - 0.094	3	0.141	0.110	1.882	0.709	2.845	9039490028450	●
5-40	H2/H3	0.098 - 0.106	3	0.141	0.110	1.941	0.709	3.175	9039490031750	●
6-32	H3/H4	0.104 - 0.114	3	0.141	0.110	2.000	0.748	3.505	9039490035050	●
8-32	H3/H4	0.130 - 0.139	3	0.168	0.131	2.130	0.827	4.166	9039490041660	●
10-24	H3/H4	0.145 - 0.155	3	0.194	0.152	2.382	0.945	4.826	9039490048260	●
12-24	H3/H4	0.171 - 0.181	3	0.220	0.165	2.382	1.024	5.486	9039490054860	●
1/4-20	H4/H5	0.196 - 0.207	3	0.255	0.191	2.500	1.181	6.350	9039490063500	●
5/16-18	H4/H5	0.252 - 0.265	3	0.318	0.238	2.721	1.377	7.938	9039490079380	●
3/8-16	H5/H6	0.307 - 0.321	3	0.381	0.286	2.941	1.456	9.525	9039490095250	●
7/16-14	H5/H6	0.360 - 0.376	3	0.323	0.242	3.161	N/A	11.113	9039490111130	●
1/2-13	H5/H6	0.417 - 0.434	3	0.367	0.275	3.382	N/A	12.700	9039490127000	●
9/16-12	H5/H6	0.472 - 0.490	3	0.429	0.322	3.591	N/A	14.288	9039490142880	●
5/8-11	H5/H6	0.527 - 0.546	4	0.480	0.360	3.811	N/A	15.875	9039490158750	●
3/4-10	H5/H6	0.642 - 0.663	4	0.590	0.442	4.252	N/A	19.050	9039490190500	●
7/8-9	H6/H7	0.755 - 0.778	4	0.697	0.523	4.689	N/A	22.225	9039490222250	●
1-8	H6/H7	0.865 - 0.890	4	0.800	0.600	5.130	N/A	25.400	9039490254000	●
1 1/8- 7	H6/H7	0.970 - 0.998	4	0.896	0.672	5.441	N/A	28.575	9039490285750	●
1 1/4- 7	H7/H8	1.095 - 1.123	4	1.021	0.766	5.748	N/A	31.750	9039490317500	●
1 3/8- 6	H7/H8	1.195 - 1.225	4	1.108	0.831	6.063	N/A	34.925	9039490349250	●
1 1/2-6	H7/H8	1.320 - 1.350	6	1.233	0.925	6.378	N/A	38.100	9039490381000	●