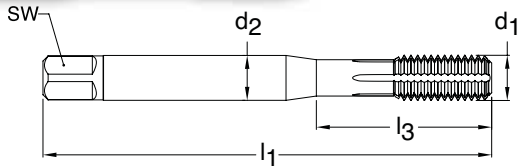


# METRIC



Through holes



Blind holes



TiN coated



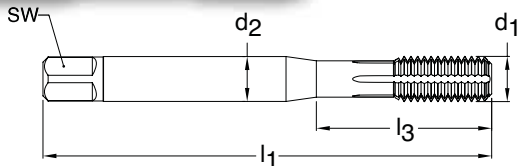
External cooling

**Series** 3939  
**Standard** ANSI  
**Tool Material** HSS-E (Cobalt)  
**Flute** Oil grooves  
**Chamfer Form** C • 2-3  
**Class of Fit** 6HX



d1 - P	D Limits	Tap Drill Range mm	Number of Flutes	d2 inch	SW inch	l1 inch	l3 inch	Order Code	EDP Number	Stock
M2 X 0.40	D4/D5	1.830 - 1.870	3	0.141	0.110	1.752	0.441	2.000	9039390020000	●
M3 X 0.50	D5/D6	2.780 - 2.840	4	0.141	0.110	1.941	0.709	3.000	9039390030000	●
M4 X 0.70	D6/D7	3.670 - 3.760	4	0.168	0.131	2.130	0.827	4.000	9039390040000	●
M5 X 0.80	D7/D8	4.620 - 4.680	4	0.194	0.152	2.382	0.945	5.000	9039390050000	●
M6 X 1.00	D8/D9	5.520 - 5.600	4	0.255	0.191	2.500	1.181	6.000	9039390060000	●
M8 X 1.25	D9/D10	7.390 - 7.470	5	0.318	0.238	2.721	1.377	8.000	9039390080000	●
M10 X 1.50	D10/D11	9.290 - 9.370	5	0.381	0.286	2.941	1.456	10.000	9039390100000	●
M12 X 1.75	D11/D12	11.180 - 11.280	5	0.367	0.275	3.382	N/A	12.000	9039390120000	●
M14 X 2.00	D13/D14	13.070 - 13.160	5	0.429	0.322	3.591	N/A	14.000	9039390140000	●
M16 X 2.00	D13/D14	15.070 - 15.160	5	0.480	0.360	3.811	N/A	16.000	9039390160000	●

# METRIC FINE



Through holes



Blind holes



TiN coated



External cooling

**Series** 3975  
**Standard** ANSI  
**Tool Material** HSS-E (Cobalt)  
**Flute** Oil grooves  
**Chamfer Form** C • 2-3  
**Class of Fit** 6HX



d1 - P	D Limits	Tap Drill Range mm	Number of Flutes	d2 inch	SW inch	l1 inch	l3 inch	Order Code	EDP Number	Stock
M6 X 0.75	D6/D7	5.620 - 5.700	4	0.255	0.191	2.500	1.181	6.004	9039750060040	●
M8 X 1.00	D7/D8	7.520 - 7.620	5	0.318	0.238	2.721	1.377	8.005	9039750080050	●
M10 X 1.00	D7/D8	9.520 - 9.620	5	0.381	0.286	2.941	1.456	10.005	9039750100050	●
M10 X 1.25	D7/D8	9.360 - 9.470	5	0.381	0.286	2.941	1.456	10.006	9039750100060	●
M12 X 1.00	D7/D8	11.520 - 11.620	6	0.367	0.275	3.382	N/A	12.005	9039750120050	●
M12 X 1.25	D7/D8	11.360 - 11.470	6	0.367	0.275	3.382	N/A	12.006	9039750120060	●
M12 X 1.50	D8/D9	11.260 - 11.380	6	0.367	0.275	3.382	N/A	12.007	9039750120070	●
M14 X 1.25	D9/D10	13.360 - 13.470	6	0.429	0.322	3.591	N/A	14.006	9039750140060	●
M14 X 1.50	D10/D11	13.260 - 13.380	6	0.429	0.322	3.591	N/A	14.007	9039750140070	●
M16 X 1.50	D10/D11	15.260 - 15.380	6	0.480	0.360	3.811	N/A	16.007	9039750160070	●
M18 X 1.50	D10/D11	17.260 - 17.380	6	0.542	0.406	4.032	N/A	18.007	9039750180070	●
M20 X 1.50	D11/D12	19.260 - 19.380	7	0.652	0.489	4.469	N/A	20.007	9039750200070	●