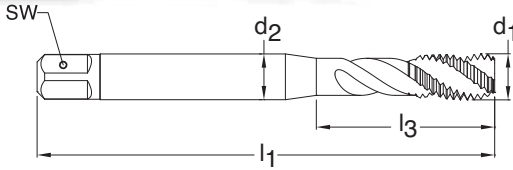


UNC



Blind holes

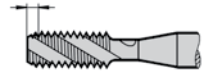


TiN coated



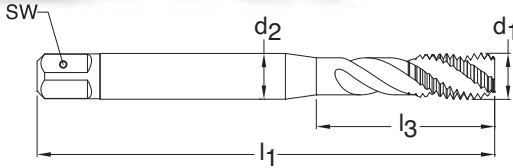
External cooling

Series 3977
Standard ANSI
Tool Material HSS-E (Cobalt)
Spiral Flute 40° Helix
Chamfer Form E • 1.5-2
Class of Fit 2B



d1 - P	H Limits	Tap Drill Range inch	Number of Flutes	d2 inch	SW inch	l1 inch	l3 inch	Order Code	EDP Number	Stock
2-56	H2/H3	0.067 - 0.074	3	0.141	0.110	1.752	0.441	2.184	9039770021840	●
3-48	H2/H3	0.076 - 0.084	3	0.141	0.110	1.811	0.500	2.515	9039770025150	●
4-40	H2/H3	0.085 - 0.094	3	0.141	0.110	1.882	0.709	2.845	9039770028450	●
5-40	H2/H3	0.098 - 0.106	3	0.141	0.110	1.941	0.709	3.175	9039770031750	●
6-32	H3/H4	0.104 - 0.114	3	0.141	0.110	2.000	0.748	3.505	9039770035050	●
8-32	H3/H4	0.130 - 0.139	3	0.168	0.131	2.130	0.827	4.166	9039770041660	●
10-24	H3/H4	0.145 - 0.155	3	0.194	0.152	2.382	0.945	4.826	9039770048260	●
12-24	H3/H4	0.171 - 0.181	3	0.220	0.165	2.382	1.024	5.486	9039770054860	●
1/4-20	H4/H5	0.196 - 0.207	3	0.255	0.191	2.500	1.181	6.350	9039770063500	●
5/16-18	H4/H5	0.252 - 0.265	3	0.318	0.238	2.721	1.377	7.938	9039770079380	●
3/8-16	H5/H6	0.307 - 0.321	3	0.381	0.286	2.941	1.456	9.525	9039770095250	●
7/16-14	H5/H6	0.360 - 0.376	3	0.323	0.242	3.161	N/A	11.113	9039770111130	●
1/2-13	H5/H6	0.417 - 0.434	3	0.367	0.275	3.382	N/A	12.700	9039770127000	●
9/16-12	H5/H6	0.472 - 0.490	3	0.429	0.322	3.591	N/A	14.288	9039770142880	●
5/8-11	H5/H6	0.527 - 0.546	4	0.480	0.360	3.811	N/A	15.875	9039770158750	●
3/4-10	H5/H6	0.642 - 0.663	4	0.590	0.442	4.252	N/A	19.050	9039770190500	●
7/8-9	H6/H7	0.755 - 0.778	4	0.697	0.523	4.689	N/A	22.225	9039770222250	●
1-8	H6/H7	0.865 - 0.890	4	0.800	0.600	5.130	N/A	25.400	9039770254000	●
1 1/4-7	H7/H8	1.095 - 1.123	4	1.021	0.766	5.748	N/A	31.750	9039770317500	●
1 1/2-6	H7/H8	1.320 - 1.350	6	1.233	0.925	6.378	N/A	38.100	9039770381000	●

UNF



Blind holes

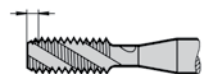


TiN coated



External cooling

Series 3978
Standard ANSI
Tool Material HSS-E (Cobalt)
Spiral Flute 40° Helix
Chamfer Form E • 1.5-2
Class of Fit 2B



d1 - P	H Limits	Tap Drill Range inch	Number of Flutes	d2 inch	SW inch	l1 inch	l3 inch	Order Code	EDP Number	Stock
2-64	H2/H3	0.069 - 0.075	3	0.141	0.110	1.752	0.441	2.184	9039780021840	●
3-56	H2/H3	0.080 - 0.086	3	0.141	0.110	1.811	0.500	2.515	9039780025150	●
4-48	H2/H3	0.089 - 0.097	3	0.141	0.110	1.882	0.709	2.845	9039780028450	●
5-44	H2/H3	0.100 - 0.108	3	0.141	0.110	1.941	0.709	3.175	9039780031750	●
6-40	H2/H3	0.111 - 0.119	3	0.141	0.110	2.000	0.748	3.505	9039780035050	●
8-36	H2/H3	0.134 - 0.142	3	0.168	0.131	2.130	0.827	4.166	9039780041660	●
10-32	H3/H4	0.156 - 0.164	3	0.194	0.152	2.382	0.945	4.826	9039780048260	●
12-28	H3/H4	0.177 - 0.186	3	0.220	0.165	2.382	1.024	5.486	9039780054860	●
1/4-28	H3/H4	0.211 - 0.220	3	0.255	0.191	2.500	1.181	6.350	9039780063500	●
5/16-24	H3/H4	0.267 - 0.277	3	0.318	0.238	2.721	1.377	7.938	9039780079380	●
3/8-24	H3/H4	0.330 - 0.340	3	0.381	0.286	2.941	1.456	9.525	9039780095250	●
7/16-20	H4/H5	0.383 - 0.395	3	0.323	0.242	3.161	N/A	11.113	9039780111130	●
1/2-20	H4/H5	0.446 - 0.457	3	0.367	0.275	3.382	N/A	12.700	9039780127000	●
9/16-18	H4/H5	0.502 - 0.515	3	0.429	0.322	3.591	N/A	14.288	9039780142880	●
5/8-18	H4/H5	0.565 - 0.578	4	0.480	0.360	3.811	N/A	15.875	9039780158750	●
3/4-16	H5/H6	0.682 - 0.696	4	0.590	0.442	4.252	N/A	19.050	9039780190500	●
7/8-14	H6/H7	0.798 - 0.813	4	0.697	0.523	4.689	N/A	22.225	9039780222250	●
1-12	H6/H7	0.910 - 0.928	4	0.800	0.600	5.130	N/A	25.400	9039780254000	●
1 1/4-12	H6/H7	1.160 - 1.178	4	1.021	0.766	5.748	N/A	31.750	9039780317500	●
1 1/2-12	H6/H7	1.410 - 1.428	6	1.233	0.925	6.378	N/A	38.100	9039780381000	●