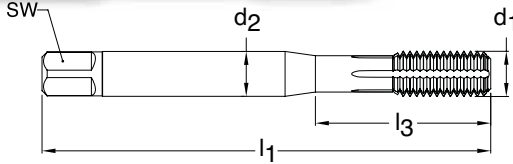


METRIC



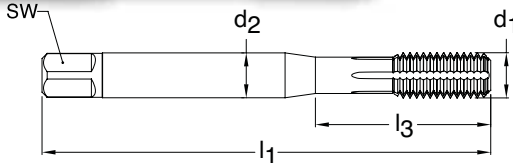
Series 3942
Standard ANSI
Tool Material HSS-E (Cobalt)
Flute Oil grooves
Chamfer Form C • 2-3
Class of Fit 6HX



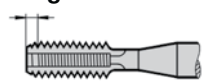
Through holes **Blind holes** **TiCN coated** **External cooling**

d1 - P	D Limits	Tap Drill Range mm	Number of Flutes	d2 inch	SW inch	l1 inch	l3 inch	Order Code	EDP Number	Stock
M3 X 0.50	D5/D6	2.780 - 2.840	4	0.141	0.110	1.941	0.709	3.000	9039420030000	●
M4 X 0.70	D6/D7	3.670 - 3.760	4	0.168	0.131	2.130	0.827	4.000	9039420040000	●
M5 X 0.80	D7/D8	4.620 - 4.680	4	0.194	0.152	2.382	0.945	5.000	9039420050000	●
M6 X 1.00	D8/D9	5.520 - 5.600	4	0.255	0.191	2.500	1.181	6.000	9039420060000	●
M8 X 1.25	D9/D10	7.390 - 7.470	5	0.318	0.238	2.721	1.377	8.000	9039420080000	●
M10 X 1.50	D10/D11	9.290 - 9.370	5	0.381	0.286	2.941	1.456	10.000	9039420100000	●
M12 X 1.75	D11/D12	11.180 - 11.280	5	0.367	0.275	3.382	N/A	12.000	9039420120000	●
M14 X 2.00	D13/D14	13.070 - 13.160	5	0.429	0.322	3.591	N/A	14.000	9039420140000	●
M16 X 2.00	D13/D14	15.070 - 15.160	5	0.480	0.360	3.811	N/A	16.000	9039420160000	●

METRIC



Series 3979
Standard ANSI
Tool Material HSS-E (Cobalt)
Flute Oil grooves
Chamfer Form E • 1.5-2
Class of Fit 6HX



Through holes **Blind holes** **TiN coated** **External cooling**

d1 - P	D Limits	Tap Drill Range mm	Number of Flutes	d2 inch	SW inch	l1 inch	l3 inch	Order Code	EDP Number	Stock
M3 X 0.50	D5/D6	2.780 - 2.840	4	0.141	0.110	1.941	0.709	3.000	9039790030000	●
M4 X 0.70	D6/D7	3.670 - 3.760	4	0.168	0.131	2.130	0.827	4.000	9039790040000	●
M5 X 0.80	D7/D8	4.620 - 4.680	4	0.194	0.152	2.382	0.945	5.000	9039790050000	●
M6 X 1.00	D8/D9	5.520 - 5.600	4	0.255	0.191	2.500	1.181	6.000	9039790060000	●
M8 X 1.25	D9/D10	7.390 - 7.470	5	0.318	0.238	2.721	1.377	8.000	9039790080000	●
M10 X 1.50	D10/D11	9.290 - 9.370	5	0.381	0.286	2.941	1.456	10.000	9039790100000	●
M12 X 1.75	D11/D12	11.180 - 11.280	5	0.367	0.275	3.382	N/A	12.000	9039790120000	●
M14 X 2.00	D13/D14	13.070 - 13.160	6	0.429	0.322	3.591	N/A	14.000	9039790140000	●
M16 X 2.00	D13/D14	15.070 - 15.160	6	0.480	0.360	3.811	N/A	16.000	9039790160000	●

"Tap drill Range" given is per the Class of Fit shown per Series #
 Additional Tap Drill sizes & percent of thread engagement can be found on pages 238-239.