

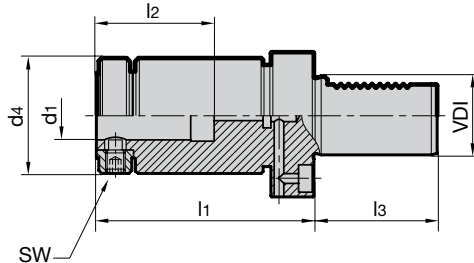
## Floating side lock holder VDI DIN 69880-1

### Product information

- VDI holder shank with teeth
- suitable for conventional and high performance multi-fluted reamers, because of no angle compensation
- central coolant supply max. 80 bar
- tool shank with special whistle notch flat necessary
- drive flat on tool shank necessary
- for tool shank tolerance h6

### Scope of delivery

- for other shank  $\varnothing$  order reduction sleeves Guhring no. 4095 separately
- order hexagon chuck key Guhring no. 4912 separately
- further dimensions available on request



Series Number **4117**

VDI	holder $d_1$ h6 mm	clamping range	$d_4$ mm	$l_1$ mm	$l_2$ mm	$l_3$ mm	SW	radial play	Order Code	EDP Numbers
30	25	$\varnothing$ 16-25	59	111	59	55	5	0.12	25.030	9041170250300
40	25	$\varnothing$ 16-25	59	111	59	63	5	0.12	25.040	9041170250400
40	32	$\varnothing$ 20-32	80	117	63	63	6	0.12	32.040	9041170320400
50	25	$\varnothing$ 16-25	59	111	59	78	5	0.12	25.050	9041170250500
50	32	$\varnothing$ 20-32	80	117	63	78	6	0.12	32.050	9041170320500

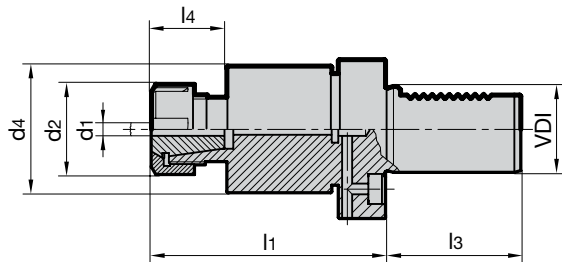
## Floating ER Collet holder VDI DIN 69880-1

### Product information

- VDI holder shank with teeth
- suitable for conventional and high performance multi-fluted reamers, because of no angle compensation
- for the application of internally cooled reamers use metallic sealed collets type DM Guhring no. 4175
- with coolant supply max. 80 bar

### Scope of delivery

- incl. retaining nut
- order collet Guhring no. 4175 or 4307 as well as clamping key Guhring no. 4913 separately
- further sizes with differing radial play are available on request



Series Number **4116**

VDI	recommended tool- $\varnothing$	clamping range	$d_2$ mm	$d_4$ mm	$l_1$ mm	$l_3$ mm	$l_4$ mm	radial play	Order Code	EDP Numbers
30	from $\varnothing$ 20	ER25 $\varnothing$ 2-16	42	59	109	55	35	0.08	25.030	9041160250300
40	from $\varnothing$ 20	ER25 $\varnothing$ 2-16	42	59	109	63	35	0.10	25.040	9041160250400
40	$\varnothing$ 6- $\varnothing$ 32	ER32 $\varnothing$ 3-20	50	64	116	63	35.5	0.10	32.040	9041160320400
50	from $\varnothing$ 20	ER25 $\varnothing$ 2-16	42	59	109	78	35	0.12	25.050	9041160250500
50	$\varnothing$ 6- $\varnothing$ 32	ER32 $\varnothing$ 3-20	50	64	116	78	35.5	0.12	32.050	9041160320500