

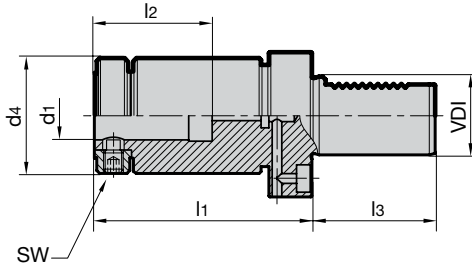
Floating side lock holder VDI DIN 69880-1

Product information

- VDI holder shank with teeth
- suitable for conventional and high performance multi-fluted reamers, because of no angle compensation
- central coolant supply max. 80 bar
- tool shank with special whistle notch flat necessary
- drive flat on tool shank necessary
- for tool shank tolerance h6

Scope of delivery

- for other shank \varnothing order reduction sleeves Guhring no. 4095 separately
- order hexagon chuck key Guhring no. 4912 separately
- further dimensions available on request



Series Number **4117**

| VDI | holder d_1 h6 mm | clamping range | d_4 mm | l_1 mm | l_2 mm | l_3 mm | SW | radial play | Order Code | EDP Numbers |
|-----|--------------------|---------------------|----------|----------|----------|----------|----|-------------|------------|---------------|
| 30 | 25 | \varnothing 16-25 | 59 | 111 | 59 | 55 | 5 | 0.12 | 25.030 | 9041170250300 |
| 40 | 25 | \varnothing 16-25 | 59 | 111 | 59 | 63 | 5 | 0.12 | 25.040 | 9041170250400 |
| 40 | 32 | \varnothing 20-32 | 80 | 117 | 63 | 63 | 6 | 0.12 | 32.040 | 9041170320400 |
| 50 | 25 | \varnothing 16-25 | 59 | 111 | 59 | 78 | 5 | 0.12 | 25.050 | 9041170250500 |
| 50 | 32 | \varnothing 20-32 | 80 | 117 | 63 | 78 | 6 | 0.12 | 32.050 | 9041170320500 |

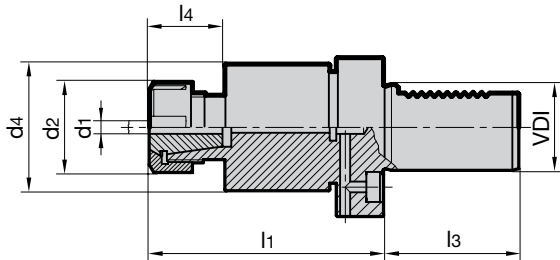
Floating ER Collet holder VDI DIN 69880-1

Product information

- VDI holder shank with teeth
- suitable for conventional and high performance multi-fluted reamers, because of no angle compensation
- for the application of internally cooled reamers use metallic sealed collets type DM Guhring no. 4175
- with coolant supply max. 80 bar

Scope of delivery

- incl. retaining nut
- order collet Guhring no. 4175 or 4307 as well as clamping key Guhring no. 4913 separately
- further sizes with differing radial play are available on request



Series Number **4116**

| VDI | recommended tool- \varnothing | clamping range | d_2 mm | d_4 mm | l_1 mm | l_3 mm | l_4 mm | radial play | Order Code | EDP Numbers |
|-----|-----------------------------------|-------------------------|----------|----------|----------|----------|----------|-------------|------------|---------------|
| 30 | from \varnothing 20 | ER25 \varnothing 2-16 | 42 | 59 | 109 | 55 | 35 | 0.08 | 25.030 | 9041160250300 |
| 40 | from \varnothing 20 | ER25 \varnothing 2-16 | 42 | 59 | 109 | 63 | 35 | 0.10 | 25.040 | 9041160250400 |
| 40 | \varnothing 6- \varnothing 32 | ER32 \varnothing 3-20 | 50 | 64 | 116 | 63 | 35.5 | 0.10 | 32.040 | 9041160320400 |
| 50 | from \varnothing 20 | ER25 \varnothing 2-16 | 42 | 59 | 109 | 78 | 35 | 0.12 | 25.050 | 9041160250500 |
| 50 | \varnothing 6- \varnothing 32 | ER32 \varnothing 3-20 | 50 | 64 | 116 | 78 | 35.5 | 0.12 | 32.050 | 9041160320500 |