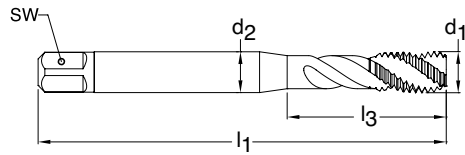


Extended length taps - 4" & 6" OAL



NEW
Spring 2017

Standard **ANSI**
Tool Material **HSS-E (Cobalt)**
Spiral Flute **40° Helix**
Chamfer Form **C • 2-3**
Class of Fit **2B**



Blind holes



TiN coated



External cooling

UNC 4" OAL extended length taps

Series **4283**

| d1 - P | H Limits | Tap Drill Range in | Number of Flutes | d2 in | SW in | l1 in | l3 in | Order Code | EDP Number |
|--------|----------|--------------------|------------------|-------|-------|-------|-------|------------|---------------|
| 4-40 | H2/H3 | 0.085 - 0.094 | 3 | 0.141 | 0.110 | 4.00 | 2.000 | 2.845 | 9042830028450 |
| 6-32 | H3/H4 | 0.104 - 0.114 | 3 | 0.141 | 0.110 | 4.00 | 2.000 | 3.505 | 9042830035050 |
| 8-32 | H3/H4 | 0.130 - 0.139 | 3 | 0.168 | 0.131 | 4.00 | 2.000 | 4.166 | 9042830041660 |
| 10-24 | H3/H4 | 0.145 - 0.155 | 3 | 0.194 | 0.152 | 4.00 | 2.000 | 4.826 | 9042830048260 |
| 1/4-20 | H4/H5 | 0.196 - 0.207 | 3 | 0.255 | 0.191 | 4.00 | 2.000 | 6.350 | 9042830063500 |

UNF 4" OAL extended length taps

Series **4284**

| d1 - P | H Limits | Tap Drill Range in | Number of Flutes | d2 in | SW in | l1 in | l3 in | Order Code | EDP Number |
|--------|----------|--------------------|------------------|-------|-------|-------|-------|------------|---------------|
| 4-48 | H2/H3 | 0.089 - 0.097 | 3 | 0.141 | 0.110 | 4.00 | 2.000 | 2.845 | 9042840028450 |
| 6-40 | H2/H3 | 0.111 - 0.119 | 3 | 0.141 | 0.110 | 4.00 | 2.000 | 3.505 | 9042840035050 |
| 8-36 | H2/H3 | 0.134 - 0.142 | 3 | 0.168 | 0.131 | 4.00 | 2.000 | 4.166 | 9042840041660 |
| 10-32 | H3/H4 | 0.156 - 0.164 | 3 | 0.194 | 0.152 | 4.00 | 2.000 | 4.826 | 9042840048260 |
| 1/4-28 | H3/H4 | 0.211 - 0.220 | 3 | 0.255 | 0.191 | 4.00 | 2.000 | 6.350 | 9042840063500 |

UNC 6" OAL extended length taps

Series **4287**

| d1 - P | H Limits | Tap Drill Range in | Number of Flutes | d2 in | SW in | l1 in | l3 in | Order Code | EDP Number |
|---------|----------|--------------------|------------------|-------|-------|-------|-------|------------|---------------|
| 1/4-20 | H4/H5 | 0.196 - 0.207 | 3 | 0.255 | 0.191 | 6.00 | 4.000 | 6.350 | 9042870063500 |
| 5/16-18 | H4/H5 | 0.252 - 0.265 | 3 | 0.318 | 0.238 | 6.00 | 4.000 | 7.938 | 9042870079380 |
| 3/8-16 | H5/H6 | 0.307 - 0.321 | 3 | 0.381 | 0.286 | 6.00 | 4.000 | 9.525 | 9042870095250 |
| 7/16-14 | H5/H6 | 0.360 - 0.376 | 3 | 0.323 | 0.242 | 6.00 | N/A | 11.113 | 9042870111130 |
| 1/2-13 | H5/H6 | 0.417 - 0.434 | 3 | 0.367 | 0.275 | 6.00 | N/A | 12.700 | 9042870127000 |
| 9/16-12 | H5/H6 | 0.472 - 0.490 | 3 | 0.429 | 0.322 | 6.00 | N/A | 14.288 | 9042870142880 |
| 5/8-11 | H5/H6 | 0.527 - 0.546 | 4 | 0.480 | 0.360 | 6.00 | N/A | 15.875 | 9042870158750 |
| 3/4-10 | H5/H6 | 0.642 - 0.663 | 4 | 0.590 | 0.442 | 6.00 | N/A | 19.050 | 9042870190500 |

UNF 6" OAL extended length taps

Series **4288**

| d1 - P | H Limits | Tap Drill Range in | Number of Flutes | d2 in | SW in | l1 in | l3 in | Order Code | EDP Number |
|---------|----------|--------------------|------------------|-------|-------|-------|-------|------------|---------------|
| 1/4-28 | H3/H4 | 0.211 - 0.220 | 3 | 0.255 | 0.191 | 6.00 | 4.000 | 6.350 | 9042880063500 |
| 5/16-24 | H3/H4 | 0.267 - 0.277 | 3 | 0.318 | 0.238 | 6.00 | 4.000 | 7.938 | 9042880079380 |
| 3/8-24 | H3/H4 | 0.330 - 0.340 | 3 | 0.381 | 0.286 | 6.00 | 4.000 | 9.525 | 9042880095250 |
| 7/16-20 | H4/H5 | 0.383 - 0.395 | 3 | 0.323 | 0.242 | 6.00 | N/A | 11.113 | 9042880111130 |
| 1/2-20 | H4/H5 | 0.446 - 0.457 | 3 | 0.367 | 0.275 | 6.00 | N/A | 12.700 | 9042880127000 |
| 9/16-18 | H4/H5 | 0.502 - 0.515 | 3 | 0.429 | 0.322 | 6.00 | N/A | 14.288 | 9042880142880 |
| 5/8-18 | H4/H5 | 0.565 - 0.578 | 4 | 0.480 | 0.360 | 6.00 | N/A | 15.875 | 9042880158750 |
| 3/4-16 | H5/H6 | 0.682 - 0.696 | 4 | 0.590 | 0.442 | 6.00 | N/A | 19.050 | 9042880190500 |