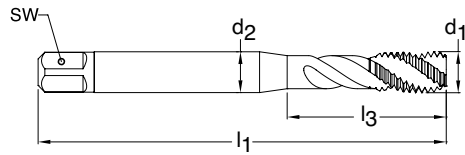


Extended length taps - 4" & 6" OAL



NEW
Spring 2017

Standard **ANSI**
Tool Material **HSS-E (Cobalt)**
Spiral Flute **40° Helix**
Chamfer Form **C • 2-3**
Class of Fit **2B**



Blind holes



TiN coated



External cooling

UNC 4" OAL extended length taps

Series **4283**

d1 - P	H Limits	Tap Drill Range in	Number of Flutes	d2 in	SW in	l1 in	l3 in	Order Code	EDP Number
4-40	H2/H3	0.085 - 0.094	3	0.141	0.110	4.00	2.000	2.845	9042830028450
6-32	H3/H4	0.104 - 0.114	3	0.141	0.110	4.00	2.000	3.505	9042830035050
8-32	H3/H4	0.130 - 0.139	3	0.168	0.131	4.00	2.000	4.166	9042830041660
10-24	H3/H4	0.145 - 0.155	3	0.194	0.152	4.00	2.000	4.826	9042830048260
1/4-20	H4/H5	0.196 - 0.207	3	0.255	0.191	4.00	2.000	6.350	9042830063500

UNF 4" OAL extended length taps

Series **4284**

d1 - P	H Limits	Tap Drill Range in	Number of Flutes	d2 in	SW in	l1 in	l3 in	Order Code	EDP Number
4-48	H2/H3	0.089 - 0.097	3	0.141	0.110	4.00	2.000	2.845	9042840028450
6-40	H2/H3	0.111 - 0.119	3	0.141	0.110	4.00	2.000	3.505	9042840035050
8-36	H2/H3	0.134 - 0.142	3	0.168	0.131	4.00	2.000	4.166	9042840041660
10-32	H3/H4	0.156 - 0.164	3	0.194	0.152	4.00	2.000	4.826	9042840048260
1/4-28	H3/H4	0.211 - 0.220	3	0.255	0.191	4.00	2.000	6.350	9042840063500

UNC 6" OAL extended length taps

Series **4287**

d1 - P	H Limits	Tap Drill Range in	Number of Flutes	d2 in	SW in	l1 in	l3 in	Order Code	EDP Number
1/4-20	H4/H5	0.196 - 0.207	3	0.255	0.191	6.00	4.000	6.350	9042870063500
5/16-18	H4/H5	0.252 - 0.265	3	0.318	0.238	6.00	4.000	7.938	9042870079380
3/8-16	H5/H6	0.307 - 0.321	3	0.381	0.286	6.00	4.000	9.525	9042870095250
7/16-14	H5/H6	0.360 - 0.376	3	0.323	0.242	6.00	N/A	11.113	9042870111130
1/2-13	H5/H6	0.417 - 0.434	3	0.367	0.275	6.00	N/A	12.700	9042870127000
9/16-12	H5/H6	0.472 - 0.490	3	0.429	0.322	6.00	N/A	14.288	9042870142880
5/8-11	H5/H6	0.527 - 0.546	4	0.480	0.360	6.00	N/A	15.875	9042870158750
3/4-10	H5/H6	0.642 - 0.663	4	0.590	0.442	6.00	N/A	19.050	9042870190500

UNF 6" OAL extended length taps

Series **4288**

d1 - P	H Limits	Tap Drill Range in	Number of Flutes	d2 in	SW in	l1 in	l3 in	Order Code	EDP Number
1/4-28	H3/H4	0.211 - 0.220	3	0.255	0.191	6.00	4.000	6.350	9042880063500
5/16-24	H3/H4	0.267 - 0.277	3	0.318	0.238	6.00	4.000	7.938	9042880079380
3/8-24	H3/H4	0.330 - 0.340	3	0.381	0.286	6.00	4.000	9.525	9042880095250
7/16-20	H4/H5	0.383 - 0.395	3	0.323	0.242	6.00	N/A	11.113	9042880111130
1/2-20	H4/H5	0.446 - 0.457	3	0.367	0.275	6.00	N/A	12.700	9042880127000
9/16-18	H4/H5	0.502 - 0.515	3	0.429	0.322	6.00	N/A	14.288	9042880142880
5/8-18	H4/H5	0.565 - 0.578	4	0.480	0.360	6.00	N/A	15.875	9042880158750
3/4-16	H5/H6	0.682 - 0.696	4	0.590	0.442	6.00	N/A	19.050	9042880190500