

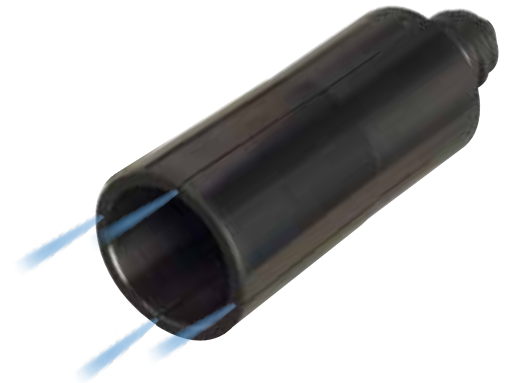
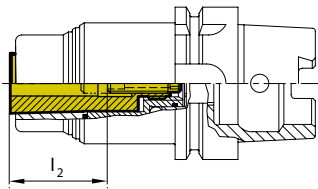
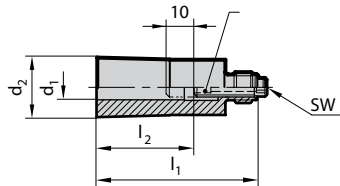
Metric GÜHROJET clamping sleeves with peripheral cooling for HPC clamping chucks

Product information

- Type P denotes sleeves with PinLock design with pull-out protection
- for use with HPC clamping chucks
- designed with peripheral cooling due to longer slots
- for tool shank tolerance h6

Scope of delivery

- incl. length setting screw



GÜHROJET
PINLOCK

Series Number

4302

**Nominal size	for shank Ø d1 h6 inch	d2 mm	l1 mm	l2 mm	Type (P = PinLock)	SW	Order Code	EDP Numbers
20	3	24.6	66	28		4	3.020	9043020030200
20	4	24.6	66	28		4	4.020	9043020040200
20	5	24.6	66	28		4	5.020	9043020050200
20	6	24.6	66	36		4	6.020	9043020060200
20	8	24.6	66	36		4	8.020	9043020080200
20	10	24.6	66	40		4	10.020	9043020100200
20	12	24.6	66	45		4	12.020	9043020120200
20	14	24.6	66	45		4	14.020	9043020140200
20	16	24.6	66	48		4	16.020	9043020160200
20	18	24.6	66	48		4	18.020	9043020180200
20	20	24.6	66	50		4	20.020	9043020200200
32	20	45.5	90	50		4	20.032	9043020200320
32	22	45.5	90	50		4	22.032	9043020220320
32	25	45.5	90	56		4	25.032	9043020250320
32	32	45.5	90	59		4	32.032	9043020320320
25	16	39	87.5	48		4	16.025	9043020160250
25	20	39	87.5	50		4	20.025	9043020200250
25	22	39	87.5	50		4	22.025	9043020220250
25	25	39	87.5	56		4	25.025	9043020250250
25	32	39	87.5	60		4	32.025	9043020320250
20	6	24.6	66	36	P	4	6.120	9043020061200
20	8	24.6	66	36	P	4	8.120	9043020081200
20	10	24.6	66	40	P	4	10.120	9043020101200
20	12	24.6	66	45	P	4	12.120	9043020121200
20	14	24.6	66	45	P	4	14.120	9043020141200
20	16	24.6	66	48	P	4	16.120	9043020161200
25	16	39	87.5	48	P	4	16.125	9043020161250
25	20	39	87.5	50	P	4	20.125	9043020201250
25	22	39	87.5	50	P	4	22.125	9043020221250
25	25	39	87.5	56	P	4	25.125	9043020251250

**HPC chuck bore nominal size must match clamping sleeve nominal size