

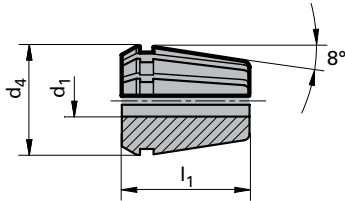
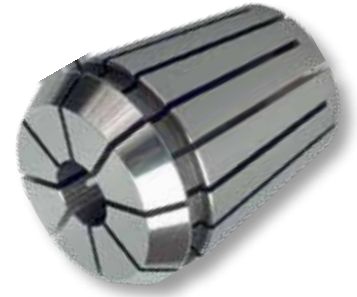
# Collets DIN ISO 15488

## Product information

- the application range of collet, Guhring no. 4307, is from nom.- $\varnothing$  d1 to the next dimension below, i.e. for  $\varnothing$  6.3 mm (nom. size ER20) order collet d1 = 7.0 mm (code no. 07,020).

## Ordering example:

$\varnothing$  d1 = 2.5  
 nom. size = ER 20  
 Guhring no./Code no. = 4307 02,520



Series Number **4307**

nominal size $d_2$	$d_1$ mm	Clamping Range	$l_1$ mm	Order Code	EDP Numbers
ER11	1	1 to 0.5	18	1.011	9043070010110
ER11	1.5	1.5 to 1	18	1.511	9043070015110
ER11	2	2 to 1.5	18	2.011	9043070020110
ER11	2.5	2.5 to 2	18	2.511	9043070025110
ER11	3	3 to 2.5	18	3.011	9043070030110
ER11	4	4 to 3	18	4.011	9043070040110
ER11	5	5 to 4	18	5.011	9043070050110
ER11	6	6 to 5	18	6.011	9043070060110
ER11	7	7 to 6	18	7.011	9043070070110
ER16	1	1 to 0.5	27.5	1.016	9043070010160
ER16	1.5	1.5 to 1	27.5	1.516	9043070015160
ER16	2	2 to 1.5	27.5	2.016	9043070020160
ER16	2.5	2.5 to 2	27.5	2.516	9043070025160
ER16	3	3 to 2.5	27.5	3.016	9043070030160
ER16	4	4 to 3	27.5	4.016	9043070040160
ER16	5	5 to 4	27.5	5.016	9043070050160
ER16	6	6 to 5	27.5	6.016	9043070060160
ER16	7	7 to 6	27.5	7.016	9043070070160
ER16	8	8 to 7	27.5	8.016	9043070080160
ER16	9	9 to 8	27.5	9.016	9043070090160
ER16	10	10 to 9	27.5	10.016	9043070100160
ER20	1	1 to 0.5	31.5	1.020	9043070010200
ER20	1.5	1.5 to 1	31.5	1.520	9043070015200
ER20	2	2 to 1.5	31.5	2.020	9043070020200
ER20	2.5	2.5 to 2	31.5	2.520	9043070025200
ER20	3	3 to 2.5	31.5	3.020	9043070030200
ER20	4	4 to 3	31.5	4.020	9043070040200
ER20	5	5 to 4	31.5	5.020	9043070050200
ER20	6	6 to 5	31.5	6.020	9043070060200
ER20	7	7 to 6	31.5	7.020	9043070070200
ER20	8	8 to 7	31.5	8.020	9043070080200
ER20	9	9 to 8	31.5	9.020	9043070090200
ER20	10	10 to 9	31.5	10.020	9043070100200
ER20	11	11 to 10	31.5	11.020	9043070110200
ER20	12	12 to 11	31.5	12.020	9043070120200
ER20	13	13 to 12	31.5	13.020	9043070130200
ER25	1	1 to 0.5	34	1.025	9043070010250
ER25	1.5	1.5 to 1	34	1.525	9043070015250
ER25	2	2 to 1.5	34	2.025	9043070020250

nominal size d <sub>2</sub>	d <sub>1</sub> mm	Clamping Range	l <sub>1</sub> mm	Order Code	EDP Numbers
ER25	2.5	2.5 to 2	34	2.525	9043070025250
ER25	3	3 to 2.5	34	3.025	9043070030250
ER25	4	4 to 3	34	4.025	9043070040250
ER25	5	5 to 4	34	5.025	9043070050250
ER25	6	6 to 5	34	6.025	9043070060250
ER25	7	7 to 6	34	7.025	9043070070250
ER25	8	8 to 7	34	8.025	9043070080250
ER25	9	9 to 8	34	9.025	9043070090250
ER25	10	10 to 9	34	10.025	9043070100250
ER25	11	11 to 10	34	11.025	9043070110250
ER25	12	12 to 11	34	12.025	9043070120250
ER25	13	13 to 12	34	13.025	9043070130250
ER25	14	14 to 13	34	14.025	9043070140250
ER25	15	15 to 14	34	15.025	9043070150250
ER25	16	16 to 15	34	16.025	9043070160250
ER32	2	2 to 1.5	40	2.032	9043070020320
ER32	2.5	2.5 to 2	40	2.532	9043070025320
ER32	3	3 to 2.5	40	3.032	9043070030320
ER32	4	4 to 3	40	4.032	9043070040320
ER32	5	5 to 4	40	5.032	9043070050320
ER32	6	6 to 5	40	6.032	9043070060320
ER32	7	7 to 6	40	7.032	9043070070320
ER32	8	8 to 7	40	8.032	9043070080320
ER32	9	9 to 8	40	9.032	9043070090320
ER32	10	10 to 9	40	10.032	9043070100320
ER32	11	11 to 10	40	11.032	9043070110320
ER32	12	12 to 11	40	12.032	9043070120320
ER32	13	13 to 12	40	13.032	9043070130320
ER32	14	14 to 13	40	14.032	9043070140320
ER32	15	15 to 14	40	15.032	9043070150320
ER32	16	16 to 15	40	16.032	9043070160320
ER32	17	17 to 16	40	17.032	9043070170320
ER32	18	18 to 17	40	18.032	9043070180320
ER32	19	19 to 18	40	19.032	9043070190320
ER32	20	20 to 19	40	20.032	9043070200320
ER40	4	4 to 3	46	4.040	9043070040400
ER40	5	5 to 4	46	5.040	9043070050400
ER40	6	6 to 5	46	6.040	9043070060400
ER40	7	7 to 6	46	7.040	9043070070400
ER40	8	8 to 7	46	8.040	9043070080400
ER40	9	9 to 8	46	9.040	9043070090400
ER40	10	10 to 9	46	10.040	9043070100400
ER40	11	11 to 10	46	11.040	9043070110400
ER40	12	12 to 11	46	12.040	9043070120400
ER40	13	13 to 12	46	13.040	9043070130400
ER40	14	14 to 13	46	14.040	9043070140400
ER40	15	15 to 14	46	15.040	9043070150400
ER40	16	16 to 15	46	16.040	9043070160400
ER40	17	17 to 16	46	17.040	9043070170400
ER40	18	18 to 17	46	18.040	9043070180400
ER40	19	19 to 18	46	19.040	9043070190400
ER40	20	20 to 19	46	20.040	9043070200400
ER40	21	21 to 20	46	21.040	9043070210400
ER40	22	22 to 21	46	22.040	9043070220400
ER40	23	23 to 22	46	23.040	9043070230400
ER40	24	24 to 23	46	24.040	9043070240400
ER40	25	25 to 24	46	25.040	9043070250400
ER40	26	26 to 25	46	26.040	9043070260400