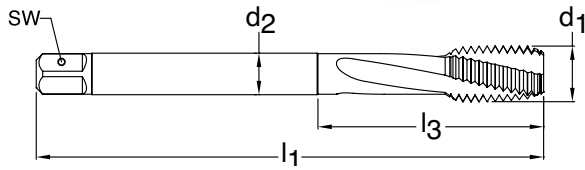


# UNC Slow helix PM taps



**NEW**  
Spring 2017



Blind holes



TiCN coated



Axial cooling

**Series 4388**  
Standard DIN/ANSI  
Tool Material HSS-E PM  
Spiral Flute 15° Helix



Chamfer Form C • 2-3

Class of Fit

2BX

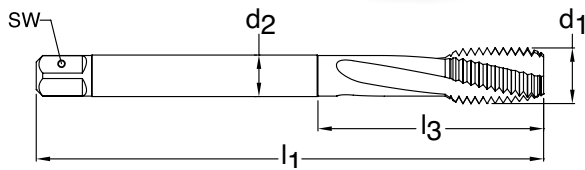


d1 - P	H Limits	Tap Drill Range in	Number of Flutes	d2 in	SW in	l1 in	l3 in	Order Code	EDP Number
10-24	H4/H5	0.145 - 0.155	3	0.194	0.152	2.756	0.945	4.826	9043880048260
1/4-20	H5/H6	0.196 - 0.207	3	0.255	0.191	3.150	1.181	6.350	9043880063500
5/16-18	H5/H6	0.252 - 0.265	3	0.318	0.238	3.543	1.377	7.938	9043880079380
3/8-16	H6/H7	0.307 - 0.321	3	0.381	0.286	3.937	1.456	9.525	9043880095250
7/16-14	H6/H7	0.360 - 0.376	4	0.323	0.242	3.937	N/A	11.113	9043880111130
1/2-13	H6/H7	0.417 - 0.434	4	0.367	0.275	4.331	N/A	12.700	9043880127000
5/8-11	H6/H7	0.527 - 0.546	4	0.480	0.360	4.331	N/A	15.875	9043880158750
3/4-10	H6/H7	0.642 - 0.663	4	0.590	0.442	4.921	N/A	19.050	9043880190500
7/8-9	H7/H8	0.755 - 0.778	4	0.697	0.523	5.512	N/A	22.225	9043880222250
1-8	H7/H8	0.865 - 0.890	4	0.800	0.600	6.299	N/A	25.400	9043880254000

# UNF Slow helix PM taps



**NEW**  
Spring 2017



Blind holes



TiCN coated



Axial cooling

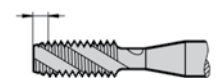
**Series 4389**  
Standard DIN/ANSI  
Tool Material HSS-E PM  
Spiral Flute 15° Helix



Chamfer Form C • 2-3

Class of Fit

2BX



d1 - P	H Limits	Tap Drill Range in	Number of Flutes	d2 in	SW in	l1 in	l3 in	Order Code	EDP Number
10-32	H4/H5	0.156 - 0.164	3	0.194	0.152	2.756	0.945	4.826	9043890048260
1/4-28	H4/H5	0.211 - 0.220	3	0.255	0.191	3.150	1.181	6.350	9043890063500
5/16-24	H4/H5	0.267 - 0.277	3	0.318	0.238	3.543	1.377	7.938	9043890079380
3/8-24	H4/H5	0.330 - 0.340	4	0.381	0.286	3.543	1.456	9.525	9043890095250
7/16-20	H5/H6	0.383 - 0.395	4	0.323	0.242	3.937	N/A	11.113	9043890111130
1/2-20	H5/H6	0.446 - 0.457	4	0.367	0.275	3.937	N/A	12.700	9043890127000
5/8-18	H5/H6	0.565 - 0.578	5	0.480	0.360	3.937	N/A	15.875	9043890158750
3/4-16	H6/H7	0.682 - 0.696	5	0.590	0.442	4.331	N/A	19.050	9043890190500
7/8-14	H7/H8	0.798 - 0.813	6	0.697	0.523	4.921	N/A	22.225	9043890222250
1-12	H7/H8	0.910 - 0.928	6	0.800	0.600	5.512	N/A	25.400	9043890254000