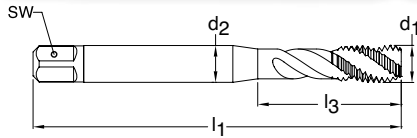


UNC HSS-E Taps for Alloyed & Stainless

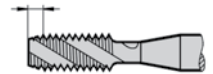


NEW
Spring 2017

Series 4392
Standard DIN/ANSI
Tool Material HSS-E
Spiral Flute 40° Helix

Chamfer Form C • 2-3

Class of Fit 2BX



Blind holes



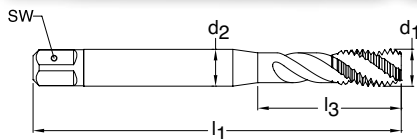
TiN coated



External cooling

d1 - P	H Limits	Tap Drill Range inch	Number of Flutes	d2 inch	SW inch	l1 inch	l3 inch	Order Code	EDP Number
2-56	H3/H4	0.067 - 0.074	3	0.141	0.110	1.969	0.631	2.184	9043920021840
4-40	H3/H4	0.085 - 0.094	3	0.141	0.110	2.205	0.709	2.845	9043920028450
5-40	H3/H4	0.098 - 0.106	3	0.141	0.110	2.205	0.709	3.175	9043920031750
6-32	H4/H5	0.104 - 0.114	3	0.141	0.110	2.205	0.709	3.505	9043920035050
8-32	H4/H5	0.130 - 0.139	3	0.168	0.131	2.480	0.827	4.166	9043920041660
10-24	H4/H5	0.145 - 0.155	3	0.194	0.152	2.756	0.945	4.826	9043920048260
12-24	H4/H5	0.171 - 0.181	3	0.220	0.165	3.150	1.024	5.486	9043920054860
1/4-20	H5/H6	0.196 - 0.207	3	0.255	0.191	3.150	1.181	6.350	9043920063500
5/16-18	H5/H6	0.252 - 0.265	3	0.318	0.238	3.543	1.377	7.938	9043920079380
3/8-16	H6/H7	0.307 - 0.321	3	0.381	0.286	3.937	1.456	9.525	9043920095250
7/16-14	H6/H7	0.360 - 0.376	3	0.323	0.242	3.937	N/A	11.113	9043920111130
1/2-13	H6/H7	0.417 - 0.434	3	0.367	0.275	4.331	N/A	12.700	9043920127000
9/16-12	H6/H7	0.472 - 0.490	3	0.429	0.322	4.331	N/A	14.288	9043920142880
5/8-11	H6/H7	0.527 - 0.546	4	0.480	0.360	4.331	N/A	15.875	9043920158750
3/4-10	H6/H7	0.642 - 0.663	4	0.590	0.442	4.921	N/A	19.050	9043920190500
7/8-9	H7/H8	0.755 - 0.778	4	0.697	0.523	5.512	N/A	22.225	9043920222250

UNF HSS-E Taps for Alloyed & Stainless

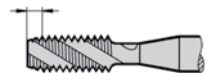


NEW
Spring 2017

Series 4393
Standard DIN/ANSI
Tool Material HSS-E
Spiral Flute 40° Helix

Chamfer Form C • 2-3

Class of Fit 2BX



Blind holes



TiN coated



External cooling

d1 - P	H Limits	Tap Drill Range inch	Number of Flutes	d2 inch	SW inch	l1 inch	l3 inch	Order Code	EDP Number
2-64	H3/H4	0.069 - 0.075	3	0.141	0.110	1.969	0.631	2.184	9043930021840
4-48	H3/H4	0.089 - 0.097	3	0.141	0.110	2.205	0.709	2.845	9043930028450
5-44	H3/H4	0.100 - 0.108	3	0.141	0.110	2.205	0.709	3.175	9043930031750
6-40	H3/H4	0.111 - 0.119	3	0.141	0.110	2.205	0.709	3.505	9043930035050
8-36	H3/H4	0.134 - 0.142	3	0.168	0.131	2.480	0.827	4.166	9043930041660
10-32	H4/H5	0.156 - 0.164	3	0.194	0.152	2.756	0.945	4.826	9043930048260
12-28	H4/H5	0.177 - 0.186	3	0.220	0.165	3.150	1.024	5.486	9043930054860
1/4-28	H4/H5	0.211 - 0.220	3	0.255	0.191	3.150	1.181	6.350	9043930063500
5/16-24	H4/H5	0.267 - 0.277	3	0.318	0.238	3.543	1.377	7.938	9043930079380
3/8-24	H4/H5	0.330 - 0.340	3	0.381	0.286	3.543	1.456	9.525	9043930095250
7/16-20	H5/H6	0.383 - 0.395	3	0.323	0.242	3.937	N/A	11.113	9043930111130
1/2-20	H5/H6	0.446 - 0.457	3	0.367	0.275	3.937	N/A	12.700	9043930127000
9/16-18	H5/H6	0.502 - 0.515	3	0.429	0.322	3.937	N/A	14.288	9043930142880
5/8-18	H5/H6	0.565 - 0.578	4	0.480	0.360	3.937	N/A	15.875	9043930158750
3/4-16	H6/H7	0.682 - 0.696	4	0.590	0.442	4.331	N/A	19.050	9043930190500
7/8-14	H7/H8	0.798 - 0.813	4	0.697	0.523	4.921	N/A	22.225	9043930222250
1-12	H7/H8	0.910 - 0.928	4	0.800	0.600	5.512	N/A	25.400	9043930254000