

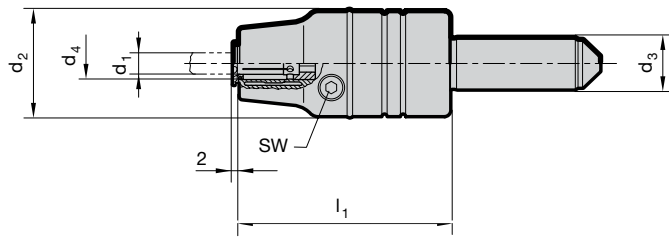
MQL hydraulic synchro tapping chucks with internal cooling

Product information

- for MQL single and double channel systems
- MQL coolant pressure up to max. 16 bar
- compensates synchronisation errors
- guarantees high thread quality and optimal tool life
- minimal length compensation in tension and compression direction balances very small pitch differences between synchro spindle and tap
- reduces an increase in axial forces during the cutting cycle to a minimum
- convenient hydraulic clamping using reduction sleeves with active drive
- length-setting screw allows 3 mm readjustment
- holder shank to DIN 1835-A or holding in precision chucks (hydraulic, shrink fit or power clamping chucks)
- Guhring MQL identifiable by green colored ring

Scope of delivery

- incl. hexagon clamping key
Guhring no. 4912
- incl. adjustment key for
MQL adjustment screws
- order MQL adjustment screw
Guhring no. 4305 separately
- order reduction sleeves
Guhring no. 4605 or 4606 separately



Series Number **4524**

| d_3 h6 mm | d_4 mm | for shank-Ø d_1 | for thread | d_2 mm | l_1 mm | tension/ compr. ± mm | SW | kg | Order Code | EDP Numbers |
|----------------|-------------|-------------------------|---------------|-------------|-------------|----------------------------|----|-----|---------------|---------------|
| 20 | 12 | 2.8 to 10 | M3 to M12 | 40 | 80 | 0.3 | 4 | 0.7 | 12.020 | 9045240120200 |
| 20 | 20 | 6 to 16 | M8 to M20 | 40 | 94 | 0.3 | 5 | 0.8 | 20.020 | 9045240200200 |