

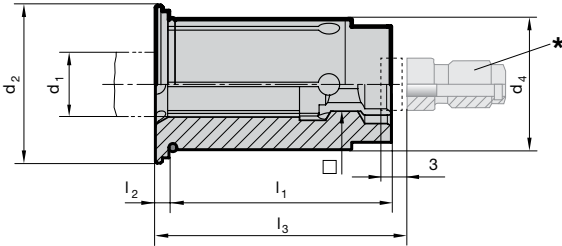
Reduction sleeves sealed for hydraulic synchro tapping chucks

Product information

- for clamping taps with square shank in GÜHROSync synchro tapping chucks
- clamping-Ø for tool shank tolerance h6-h9
- face side closed, therefore coolant leak-proof for threading tools with IC
- positive drive
- position setting screw on tap shank
- length-setting screw allows 3 mm readjustment

Scope of delivery

- order setting screw
Guhring no. 4364 separately
- order MQL setting screws
Guhring no. 4305 separately



EXCLUSIVELY for
GÜHROSync

Series Number **4605**

d ₄ mm	d ₁ mm	□ mm	Standard	d ₁ inch	□ inch	d ₂ mm	l ₁ mm	l ₂ mm	l ₃ mm	* code for adjustment screw	for thread	Order Code	EDP Numbers
12.00	2.800	2.100	DIN	-	-	16.50	29.00	2.00	-	-	M2 / M4	2.812	9046050028120
12.00	3.500	2.700	DIN	-	-	16.50	29.00	2.00	-	-	M3 / M4.5 / M5	3.512	9046050035120
12.00	4.000	3.200	JIS	-	-	16.50	29.00	2.00	-	-	M3	4.012	9046050040120
12.00	4.500	3.400	DIN	-	-	16.50	29.00	2.00	26.00	4364 5.020	M4 / M6	4.512	9046050045120
12.00	4.928	3.861	ANSI	0.194	0.152	16.50	29.00	2.00	26.00	4364 5.020	10-24 & 10-32	4.912	9046050049120
12.00	5.000	4.000	JIS	-	-	16.50	29.00	2.00	26.00	4364 5.020	M4	5.012	9046050050120
12.00	5.500	4.500	JIS	-	-	16.50	29.00	2.00	26.00	4364 5.020	M5	5.512	9046050055120
12.00	5.588	4.191	ANSI	0.220	0.165	16.50	29.00	2.00	26.00	4364 5.020	12-24 & 12-28	15.512	9046050155120
12.00	6.000	4.500	JIS	-	-	16.50	29.00	2.00	26.00	4364 5.020	M6	16.012	9046050160120
12.00	6.000	4.900	DIN	-	-	16.50	29.00	2.00	26.00	4364 6.020	M4.5/M5/M6/M8	6.012	9046050060120
12.00	6.200	5.000	JIS	-	-	16.50	29.00	2.00	26.00	4364 6.020	M7 / M8	6.212	9046050062120
12.00	6.477	4.851	ANSI	0.255	0.191	16.50	29.00	2.00	26.00	4364 6.020	1/4-20 & 1/4-28	6.412	9046050064120
12.00	7.000	5.500	DIN / JIS	-	-	16.50	29.00	2.00	26.00	4364 7.020	M7 / M9 / M10	7.012	9046050070120
12.00	7.938	5.944	ANSI	0.3125	0.234	16.50	29.00	2.00	31.00	4364 7.020	1/16-27	7.912	9046050079120
12.00	8.000	6.200	DIN	-	-	16.50	29.00	2.00	31.00	4364 8.020	M8 / M11	8.012	9046050080120
12.00	8.000	6.500	JIS	-	-	16.50	29.00	2.00	31.00	4364 8.020	M11	18.012	9046050180120
12.00	8.077	6.045	ANSI	0.318	0.238	16.50	29.00	2.00	31.00	4364 7.020	5/16-18 & 5/16-24	28.012	9046050280120
12.00	8.204	6.147	ANSI	0.323	0.242	16.50	29.00	2.00	31.00	4364 7.020	7/16-14 & 7/16-20	8.212	9046050082120
12.00	8.500	6.500	JIS	-	-	16.50	29.00	2.00	31.00	4364 8.020	M12	8.512	9046050085120
12.00	9.000	7.000	DIN	-	-	16.50	29.00	2.00	32.00	4364 9.020	M9 / M12	9.012	9046050090120
12.00	9.322	6.985	ANSI	0.367	0.275	16.50	29.00	2.00	32.00	4364 9.020	1/2-13 & 1/2-20	9.312	9046050093120
12.00	9.677	7.264	ANSI	0.381	0.286	16.50	29.00	2.00	33.00	4364 9.020	3/8-16 & 3/8-24	9.612	9046050096120
12.00	10.000	8.000	DIN	-	-	16.50	29.00	2.00	36.00	4364 10.020	M10	10.012	9046050100120

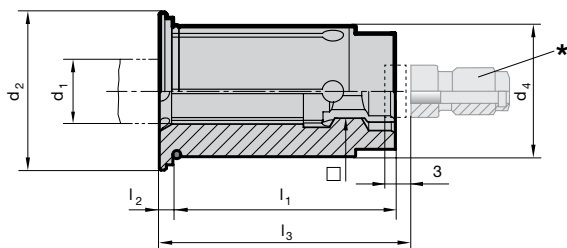
Reduction sleeves sealed for hydraulic synchro tapping chucks

Product information

- for clamping taps with square shank in GUHROSync synchro tapping chucks
- clamping-Ø for tool shank tolerance h6-h9
- face side closed, therefore coolant leak-proof for threading tools with IC
- positive drive
- position setting screw on tap shank
- length-setting screw allows 3 mm readjustment

Scope of delivery

- order setting screw
Guhring no. 4364 separately
- order MQL setting screws
Guhring no. 4305 separately



EXCLUSIVELY for
GUHROSync

Series Number **4605**

d ₄ mm	d ₁ mm	□ mm	Standard	d ₁ inch	□ inch	d ₂ mm	l ₁ mm	l ₂ mm	l ₃ mm	* code for adjustment screw	for thread	Order Code	EDP Numbers
20.00	6.000	4.500	JIS	-	-	24.10	34.00	2.00	26.00	4364 6.032	M6	26.020	9046050260200
20.00	6.000	4.900	DIN	-	-	24.10	34.00	2.00	26.00	4364 6.032	M4.5/M5/M6/M8	6.020	9046050060200
20.00	6.200	5.000	JIS	-	-	24.10	34.00	2.00	26.00	4364 6.032	M7 / M8	6.220	9046050062200
20.00	6.477	4.851	ANSI	0.255	0.191	24.10	34.00	2.00	26.00	4364 6.032	1/4-20 & 1/4-28	6.420	9046050064200
20.00	7.000	5.500	DIN / JIS	-	-	24.10	34.00	2.00	26.00	4364 7.032	M7 / M9 / M10	7.020	9046050070200
20.00	7.938	5.944	ANSI	0.3125	0.234	24.10	34.00	2.00	31.00	4364 7.032	1/16-27	7.920	9046050079200
20.00	8.000	6.200	DIN	-	-	24.10	34.00	2.00	31.00	4364 8.032	M8 / M11	8.020	9046050080200
20.00	8.000	6.500	JIS	-	-	24.10	34.00	2.00	31.00	4364 8.032	M11	18.020	9046050180200
20.00	8.077	6.045	ANSI	0.318	0.238	24.10	34.00	2.00	31.00	4364 8.032	5/16-18 & 5/16-24	28.020	9046050280200
20.00	8.204	6.147	ANSI	0.323	0.242	24.10	34.00	2.00	31.00	4364 8.032	7/16-14 & 7/16-20	8.220	9046050082200
20.00	8.500	6.500	JIS	-	-	24.10	34.00	2.00	31.00	4364 8.032	M12	8.520	9046050085200
20.00	9.000	7.000	DIN	-	-	24.10	34.00	2.00	32.00	4364 9.032	M9 / M12	9.020	9046050090200
20.00	9.322	6.985	ANSI	0.367	0.275	24.10	34.00	2.00	32.00	4364 8.032	1/2-13 & 1/2-20	9.320	9046050093200
20.00	9.677	7.264	ANSI	0.381	0.286	24.10	34.00	2.00	33.00	4364 9.032	3/8-16 & 3/8-24	9.620	9046050096200
20.00	10.000	8.000	DIN	-	-	24.10	34.00	2.00	36.00	4364 10.032	M10	10.020	9046050100200
20.00	10.500	8.000	JIS	-	-	24.10	34.00	2.00	36.00	4364 10.032	M14	10.520	9046050105200
20.00	10.897	8.179	ANSI	0.4290	0.3220	24.10	34.00	2.00	35.00	4364 10.032	9/16-12 & 9/16-18	10.820	9046050108200
20.00	11.000	9.000	DIN	-	-	24.10	34.00	2.00	37.00	4364 11.032	M14	11.020	9046050110200
20.00	12.000	9.000	DIN	-	-	24.10	34.00	2.00	37.00	4364 11.032	M12 / M16	12.020	9046050120200
20.00	12.192	9.144	ANSI	0.480	0.36	24.10	34.00	2.00	36.00	4364 11.032	5/8-11 & 5/8-18	12.120	9046050121200
20.00	12.500	10.000	JIS	-	-	24.10	34.00	2.00	38.00	4364 11.032	M16	12.520	9046050125200
20.00	13.000	10.000	JIS	-	-	24.10	34.00	2.00	38.00	4364 11.032	M17	13.020	9046050130200
20.00	14.000	11.000	DIN / JIS	-	-	24.10	34.00	2.00	39.00	4364 11.032	M18	14.020	9046050140200
20.00	14.288	10.693	ANSI	0.5625	0.421	24.10	34.00	2.00	38.00	4364 11.032	1/4-18	14.220	9046050142200
20.00	14.986	10.719	ANSI	0.590	0.422	24.10	34.00	2.00	39.00	4364 11.032	3/4-10 & 3/4-16	14.920	9046050149200
20.00	15.000	12.000	JIS	-	-	24.10	34.00	2.00	40.00	4364 16.032	M20	15.020	9046050150200
20.00	16.000	12.000	DIN	-	-	24.10	34.00	2.00	41.00	4364 16.032	M20	16.020	9046050160200