

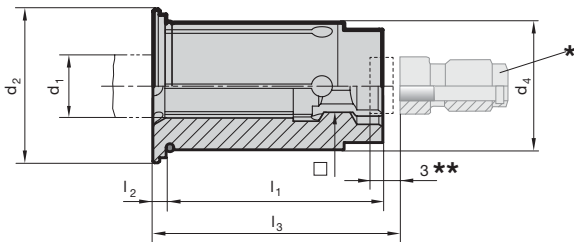
GUHROJET reduction sleeves for hydraulic synchro tapping chucks

Product information

- for clamping taps with square shank in GUHROSync synchro tapping chucks
- clamping-Ø for tool shank tolerance h6-h9
- positive drive of reduction sleeve in Guhrosync synchro chuck
- with coolant slots for peripheral cooling, therefore process and tool life improvement
- coiled swarf is consistently washed away
- position setting screw on tap shank
- length-setting screw allows 3 mm** readjustment

Scope of delivery

- order MQL setting screws
Guhring no. 4305 separately
- order setting screw
Guhring no. 4364 separately



GUHROJET

Guhring no. **4606**

d ₄ mm	d ₁ mm	□ mm	Standard	d ₁ inch	□ inch	d ₂ mm	l ₁ mm	l ₂ mm	l ₃ mm	* for adjustment screw	for thread	Code no.	EDP
12.00	2.800	2.100	DIN	-	-	16.50	29.00	2.00	-	-	M2 / M4	2.812	9046060028120
12.00	3.500	2.700	DIN	-	-	16.50	29.00	2.00	-	-	M3 / M4.5 / M5	3.512	9046060035120
12.00	3.581	2.794	ANSI	0.1410	0.110	16.50	29.00	2.00	-	-	2-56 to 6-40	3.612	9046060036120
12.00	4.000	3.200	JIS	-	-	16.50	29.00	2.00	-	-	M3	4.012	9046060040120
12.00	4.268	3.327	ANSI	0.1680	0.131	16.50	29.00	2.00	-	-	8-32 & 8-36	4.312	9046060043120
12.00	4.500	3.400	DIN	-	-	16.50	29.00	2.00	-	-	M4 / M6	4.512	9046060045120
12.00	4.928	3.861	ANSI	0.194	0.152	16.50	29.00	2.00	-	-	10-24 & 10-32	4.912	9046060049120
12.00	5.000	4.000	JIS	-	-	16.50	29.00	2.00	-	-	M4	5.012	9046060050120
12.00	5.500	4.500	JIS	-	-	16.50	29.00	2.00	-	-	M5	5.512	9046060055120
12.00	5.588	4.191	ANSI	0.220	0.165	16.50	29.00	2.00	-	-	12-24 & 12-28	15.512	9046060155120
12.00	6.000	4.500	JIS	-	-	16.50	29.00	2.00	26.00	6.020	M6	16.012	9046060160120
12.00	6.000	4.900	DIN	-	-	16.50	29.00	2.00	26.00	6.020	M4.5/M5/M6/M8	6.012	9046060060120
12.00	6.200	5.000	JIS	-	-	16.50	29.00	2.00	26.00	6.020	M7 / M8	6.212	9046060062120
12.00	6.477	4.851	ANSI	0.255	0.191	16.50	29.00	2.00	26.00	6.020	1/4-20 & 1/4-28	6.412	9046060064120
12.00	7.000	5.500	DIN / JIS	-	-	16.50	29.00	2.00	26.00	7.020	M7 / M9 / M10	7.012	9046060070120
12.00	7.938	5.944	ANSI	0.3125	0.234	16.50	29.00	2.00	31.00	7.020	1/16-27	7.912	9046060079120
12.00	8.000	6.200	DIN	-	-	16.50	29.00	2.00	31.00	8.020	M8 / M11	8.012	9046060080120
12.00	8.000	6.500	JIS	-	-	16.50	29.00	2.00	31.00	8.020	M11	18.012	9046060180120
12.00	8.077	6.045	ANSI	0.318	0.238	16.50	29.00	2.00	31.00	7.020	5/16-18 & 5/16-24	28.012	9046060280120
12.00	8.204	6.147	ANSI	0.323	0.242	16.50	29.00	2.00	31.00	8.020	7/16-14 & 7/16-20	8.212	9046060082120
12.00	8.500	6.500	JIS	-	-	16.50	29.00	2.00	31.00	8.020	M12	8.512	9046060085120
12.00	9.000	7.000	DIN	-	-	16.50	29.00	2.00	32.00	9.020	M9 / M12	9.012	9046060090120
12.00	9.322	6.985	ANSI	0.367	0.275	16.50	29.00	2.00	32.00	9.020	1/2-13 & 1/2-20	9.312	9046060093120
12.00	9.677	7.264	ANSI	0.381	0.286	16.50	29.00	2.00	33.00	9.020	3/8-16 & 3/8-24	9.612	9046060096120
12.00	10.000	8.000	DIN	-	-	16.50	29.00	2.00	36.00	10.020	M10	10.012	9046060100120

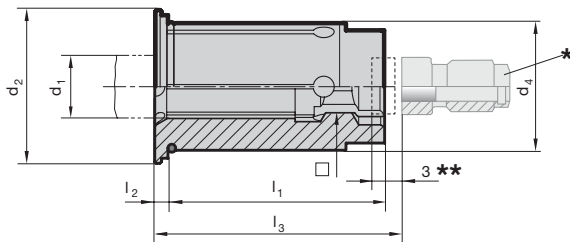
GUHROJET reduction sleeves for hydraulic synchro tapping chucks

Product information

- for clamping taps with square shank in GUHROSynch synchro tapping chucks
- clamping-Ø for tool shank tolerance h6-h9
- positive drive of reduction sleeve in Guhrosynch synchro chuck
- with coolant slots for peripheral cooling, therefore process and tool life improvement
- coiled swarf is consistently washed away
- position setting screw on tap shank
- length-setting screw allows 3 mm** readjustment

Scope of delivery

- order MQL setting screws Guhring no. 4305 separately
- order setting screw Guhring no. 4364 separately



GUHROJET

Guhring no. **4606**

d ₄ mm	d ₁ mm	□ mm	Standard	d ₁ inch	□ inch	d ₂ mm	l ₁ mm	l ₂ mm	l ₃ mm	* for adjustment screw	for thread	Code no.	EDP
20.00	6.000	4.500	JIS	-	-	24.10	34.00	2.00	26.00	6.032	M6	26.020	9046060260200
20.00	6.000	4.900	DIN	-	-	24.10	34.00	2.00	26.00	6.032	M4.5/M5/M6/M8	6.020	9046060060200
20.00	6.200	5.000	JIS	-	-	24.10	34.00	2.00	26.00	6.032	M7 / M8	6.220	9046060062200
20.00	6.477	4.851	ANSI	0.255	0.191	24.10	34.00	2.00	26.00	6.032	1/4-20 & 1/4-28	6.420	9046060064200
20.00	7.000	5.500	DIN / JIS	-	-	24.10	34.00	2.00	26.00	7.032	M7 / M9 / M10	7.020	9046060070200
20.00	7.938	5.944	ANSI	0.3125	0.234	24.10	34.00	2.00	31.00	7.032	1/16-27	7.920	9046060079200
20.00	8.000	6.200	DIN	-	-	24.10	34.00	2.00	31.00	8.032	M8 / M11	8.020	9046060080200
20.00	8.000	6.500	JIS	-	-	24.10	34.00	2.00	31.00	8.032	M11	18.020	9046060180200
20.00	8.077	6.045	ANSI	0.318	0.238	24.10	34.00	2.00	31.00	8.032	5/16-18 & 5/16-24	28.020	9046060280200
20.00	8.204	6.147	ANSI	0.323	0.242	24.10	34.00	2.00	31.00	8.032	7/16-14 & 7/16-20	8.220	9046060082200
20.00	8.500	6.500	JIS	-	-	24.10	34.00	2.00	31.00	8.032	M12	8.520	9046060085200
20.00	9.000	7.000	DIN	-	-	24.10	34.00	2.00	32.00	9.032	M9 / M12	9.020	9046060090200
20.00	9.322	6.985	ANSI	0.367	0.275	24.10	34.00	2.00	32.00	9.032	1/2-13 & 1/2-20	9.320	9046060093200
20.00	9.677	7.264	ANSI	0.381	0.286	24.10	34.00	2.00	33.00	9.032	3/8-16 & 3/8-24	9.620	9046060096200
20.00	10.000	8.000	DIN	-	-	24.10	34.00	2.00	36.00	10.032	M10	10.020	9046060100200
20.00	10.500	8.000	JIS	-	-	24.10	34.00	2.00	36.00	10.032	M14	10.520	9046060105200
20.00	10.897	8.179	ANSI	0.4290	0.3220	24.10	34.00	2.00	35.00	10.032	9/16-12 & 9/16-18	10.820	9046060108200
20.00	11.000	9.000	DIN	-	-	24.10	34.00	2.00	37.00	11.032	M14	11.020	9046060110200
20.00	12.000	9.000	DIN	-	-	24.10	34.00	2.00	37.00	11.032	M12 / M16	12.020	9046060120200
20.00	12.192	9.144	ANSI	0.480	0.36	24.10	34.00	2.00	36.00	11.032	5/8-11 & 5/8-18	12.120	9046060121200
20.00	12.500	10.000	JIS	-	-	24.10	34.00	2.00	38.00	11.032	M16	12.520	9046060125200
20.00	13.000	10.000	JIS	-	-	24.10	34.00	2.00	38.00	11.032	M17	13.020	9046060130200
20.00	14.000	11.000	DIN / JIS	-	-	24.10	34.00	2.00	39.00	14.032	M18	14.020	9046060140200
20.00	14.288	10.693	ANSI	0.5625	0.421	24.10	34.00	2.00	38.00	11.032	1/4-18	14.220	9046060142200
20.00	14.986	10.719	ANSI	0.590	0.422	24.10	34.00	2.00	39.00	11.032	3/4-10 & 3/4-16	14.920	9046060149200
20.00	15.000	12.000	JIS	-	-	24.10	34.00	2.00	40.00	16.032	M20	15.020	9046060150200
20.00	16.000	12.000	DIN	-	-	24.10	34.00	2.00	41.00	16.032	M20	16.020	9046060160200