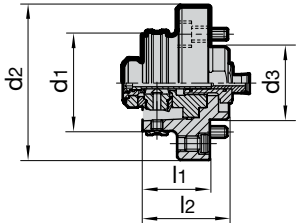


Modul 4x4 HSK adaptor flange

Product information

- for the highly accurate radial and axial alignment on alignment adaptors or machine spindles
- suitable for MQL and conventional cooling
- for the transferable torsional moment the interface between spindle and flange has to be taken into consideration



Scope of delivery

- incl. MQL 4-point clamping set Guhring no. 4930
- incl. brass lock ring Guhring no. 4953
- incl. 4 angular alignment sets Guhring no. 4715
- incl. 4 clamping screws
- incl. intermediate tube



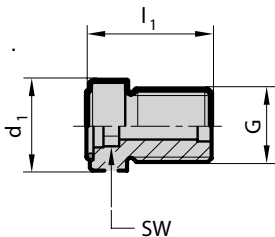
Series Number **4713**

HSK-C d ₁ mm	Module-Ø d ₂ mm	d ₃ mm	l ₁ mm	l ₂ mm	SW	Order Code	EDP Numbers
32	60	30	26	36	2.5	24.060	9047130240600
40	70	35	30	40	3	30.070	9047130300700
50	80	40	35	45	4	38.080	9047130380800
63	100	50	43	55	5	48.100	9047130481000
80	117	60	50	62	6	60.117	9047130601170
100	140	80	70	82	8	75.140	9047130751400

Length adjustment screw for conventional cooling

Product information

- To adapt MQL tool holders to meet the requirements of conventional wet machining. For plain end shanks. The height of screw head compensates the height of MQL taper



- for MQL HSK-A shrink fit and hydraulic chucks
- for use with shank according to DIN 6535 with plain shank end for conventional cooling
- with the patented face orientated O ring axial force damping is provided which prevents concentricity errors.



Series Number **4941**

for HSK-A	clamping-Ø	G	d ₁ mm	l ₁ mm	SW	Order Code	EDP Numbers
40	6	M5	6	15	2.5	2.500	9049410025000
40	6	M7x1	6	15	2.5	2.500	9049410025000
40	8	M7x1	6	18	3	3.000	9049410030000
50	6	M8x1	8	14	2.5	2.500	9049410025000
50	8	M8x1	7	18	3	3.000	9049410030000
40 / 50	10	M8x1	10	17.7	4	4.000	9049410040000
63/ 80/ 100	6	M10x1	9	22	2.5	2.500	9049410025000
63/ 80/ 100	8	M10x1	9	22	3	3.000	9049410030000
63/ 80/ 100	10	M10x1	10	16.2	4	4.000	9049410040000
40/ 50/ 63/ 80/ 100	12	M10x1	10	16.2	5	5.000	9049410050000
40/ 50/ 63/ 80/ 100	14	M10x1	10	17.2	5	5.000	9049410050000
50/ 63/ 80/ 100	16	M12x1	16	18.2	6	6.000	9049410060000
50/ 63/ 80/ 100	18	M12x1	16	19.2	6	6.000	9049410060000
50/ 63/ 80/ 100	20	M16x1	16	19.2	8	8.000	9049410080000
63/ 80/ 100	25	M16x1	16	22.7	8	8.000	9049410080000
63/ 80/ 100	32	M16x1	16	26.7	8	8.000	9049410080000