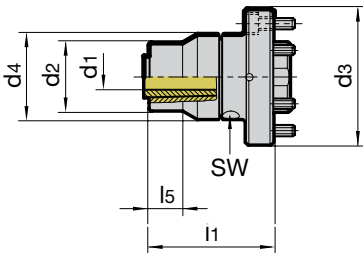


## Modul 6x6 HPC clamping chuck flange

### Product information

- for the highly accurate radial and axial alignment on alignment adaptors or machine spindles
- cooling lubricant without loss and flow-disruption thanks to the use of an intermediate tube
- highest concentricity, clamping force and rigidity thanks to mech. tension gearing
- suitable for internal cooling up to 80 bar
- positive damping characteristics
- for tool shank tolerance h6



### Scope of delivery

- incl. hexagon chuck key Guhring no. 4912
- incl. 6 angular alignment sets Guhring no. 4715
- incl. 6 clamping screws
- order intermediate tube Guhring no. 4716 separately
- order clamping sleeves Guhring nos. 4302, 4235, 4236, 4237 separately



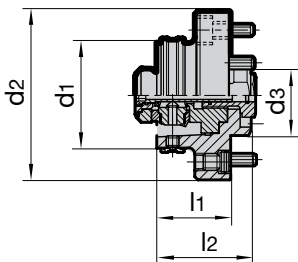
Series Number **4714**

Module-Ø d <sub>3</sub> mm	Nominal Size	for shank Ø d <sub>1</sub> h6 mm	d <sub>2</sub> mm	d <sub>4</sub> mm	l <sub>1</sub> mm	l <sub>5</sub> mm	Intermediate sleeve tube Guh. no. 4716	SW	Order Code	EDP Numbers
70	20	3 - 20	40	50	87	20	<b>9047160200300</b>	4	20.070	<b>9047140200700</b>
80	20	3 - 20	40	50	73	20	<b>9047160200300</b>	4	20.080	<b>9047140200800</b>
100	25	20 - 32	63	63	118	-	<b>9047160200300</b>	4	25.100	<b>9047140251000</b>

## Modul 6x6 HSK adaptor flange

### Product information

- for the highly accurate radial and axial alignment on alignment adaptors or machine spindles
- suitable for MQL and conventional cooling
- for the transferable torsional moment the interface between spindle and flange has to be taken into consideration



### Scope of delivery

- incl. MQL 4-point clamping set Guhring no. 4930
- incl. brass lock ring Guhring no. 4953
- incl. 6 angular alignment sets Guhring no. 4715
- incl. 6 clamping screws
- incl. intermediate tube



Series Number **4363**

HSK-C d <sub>1</sub> mm	Module-Ø d <sub>2</sub> mm	d <sub>3</sub> mm	l <sub>1</sub> mm	l <sub>2</sub> mm	SW	Order Code	EDP Numbers
32	60	30	26	36	2.5	24.060	<b>9043630240600</b>
40	70	35	30	40	3	30.070	<b>9043630300700</b>
50	80	40	35	45	4	38.080	<b>9043630380800</b>
63	100	50	43	55	5	48.100	<b>9043630481000</b>
80	117	60	50	62	6	60.110	<b>9043630601100</b>
100	140	80	70	82	8	75.140	<b>9043630751400</b>