



# SERVICE PARTS LIST

BULLETIN NO.  
54-42-2400

SPECIFY CATALOG NO. AND SERIAL NO. WHEN ORDERING PARTS		REVISED BULLETIN	DATE
<b>1/2" Compact Driver</b>			Feb. 2008
CATALOG NO. <b>2401-20</b>	STARTING SERIAL NO. <b>B30A</b>	WIRING INSTRUCTION <b>SEE NOTES</b>	

**EXAMPLE:**  

00	0
----	---

 Component Parts (Small #) Are Included When Ordering The Assembly (Large #).

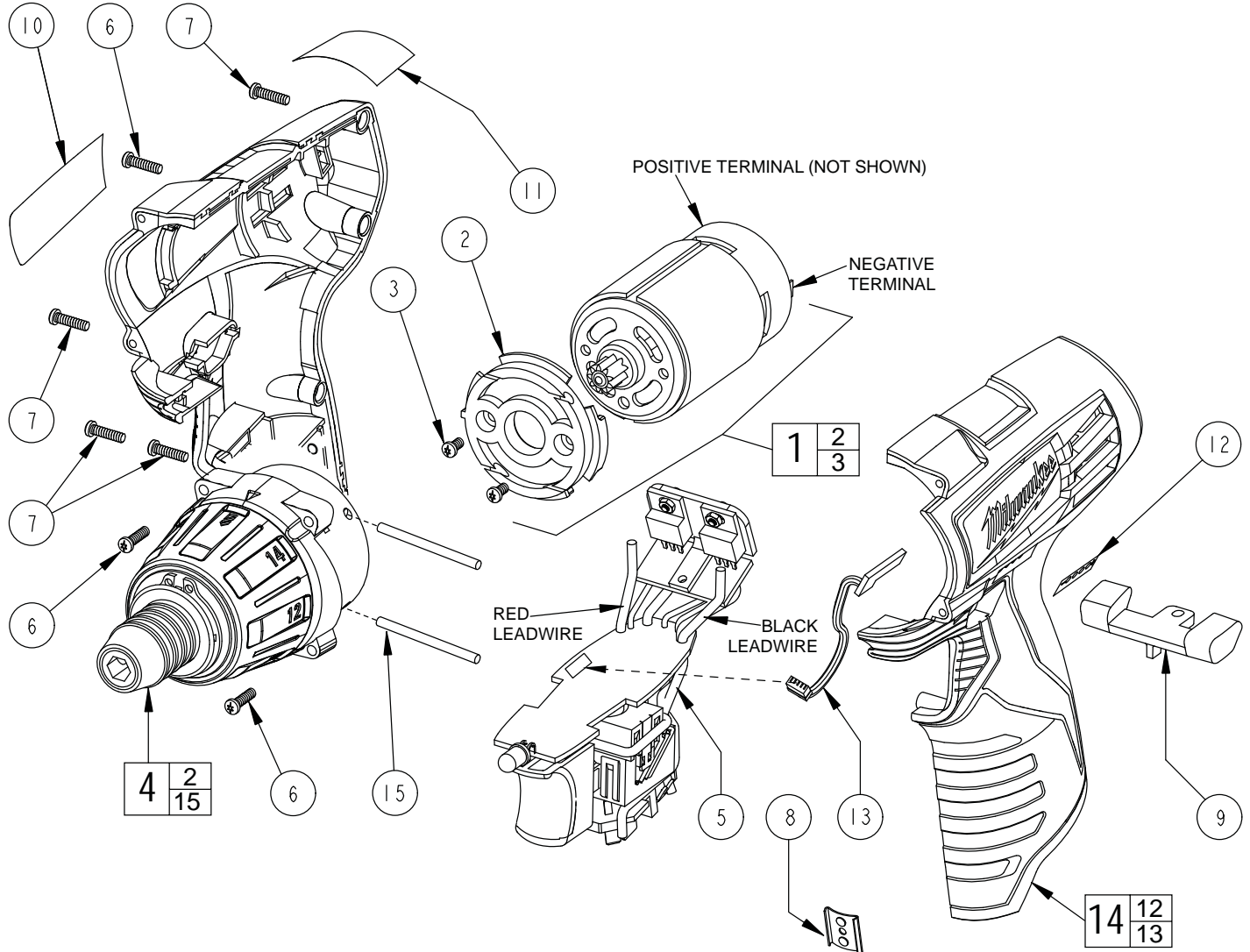


FIG.	PART NO.	DESCRIPTION OF PART	NO. REQ.
1	23-30-0095	Motor assembly	(1)
2	44-66-0155	Motor mount plate	(1)
3	05-81-0205	Screw	(2)
4	14-29-0095	Gearcase assembly	(1)
5	23-66-1095	Electronics module assembly	(1)
6	06-82-2400	Screw	(5)
7	06-82-2395	Screw	(4)
8	42-70-0055	Housing clip	(1)
9	45-24-0095	Forward/reverse button	(1)
10	12-20-2400	Service nameplate	(1)
11	10-15-0955	Warning label	(1)
12	10-20-0760	Fuel gauge label	(1)
13	22-09-0075	Fuel gauge	(1)
14	31-50-2400	Housing assembly	(1)
15	-----	Metal pin	(2)

**NOTES:**

1,2,4 Service replacement gearbox assembly (4) comes with a motor mount plate that must be discarded when servicing. A mounting plate (2) already exists on the motor assembly (1).

5, 1 Solder red lead wire from electronics module assembly (5) to positive terminal (red) of Motor Assembly. Solder black lead wire from electronics module assembly (5) to negative terminal of Motor Assembly.

5, 13 Insert the fuel gauge (13) wire assembly into the electronics module assembly.