



SERVICE PARTS LIST

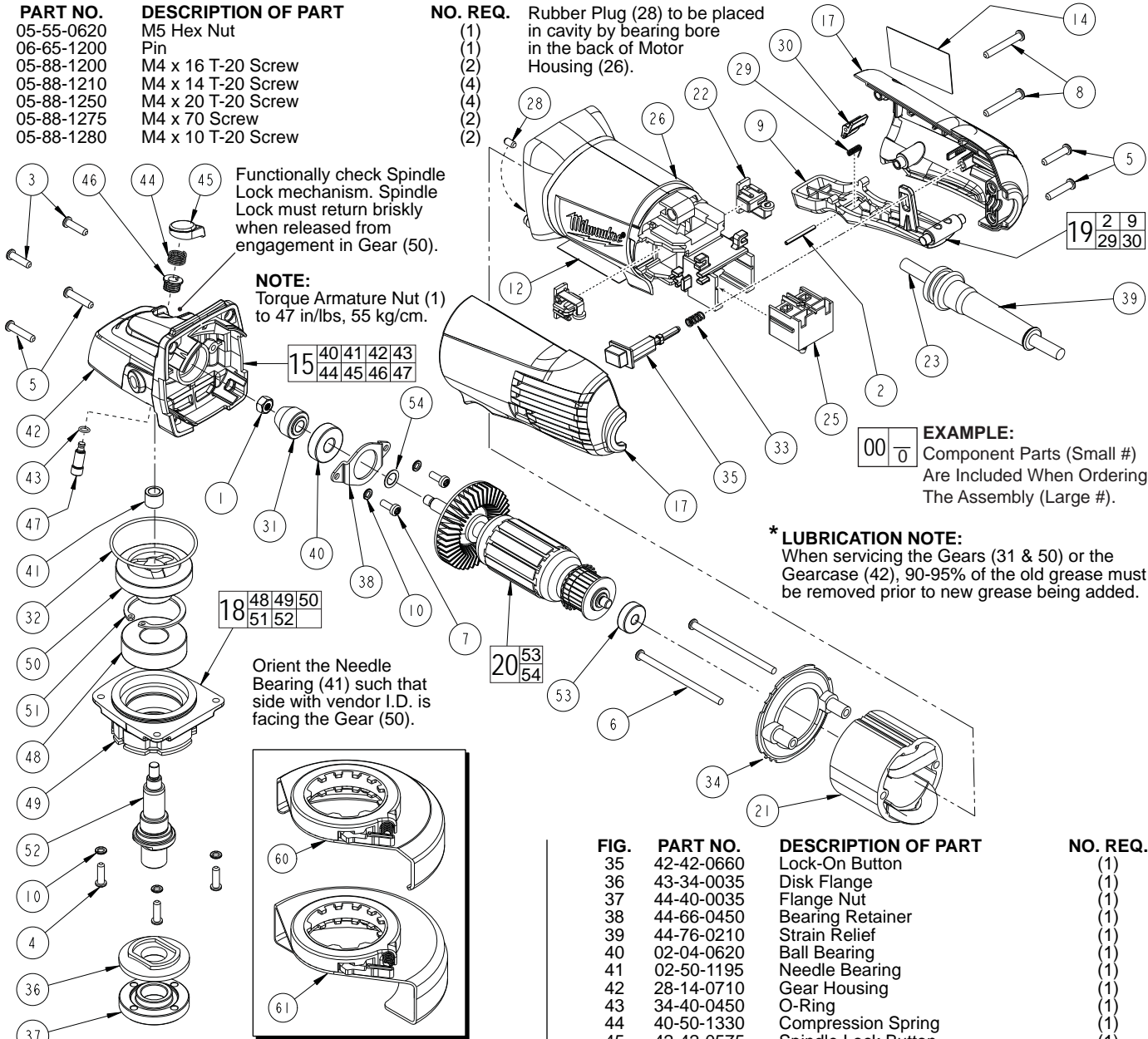
BULLETIN NO.
54-38-1770

SPECIFY CATALOG NO. AND SERIAL NO. WHEN ORDERING PARTS		REVISED BULLETIN	DATE
4.5" ANGLE GRINDER with PADDLE SWITCH w/Lock-Off			Dec. 2008
CATALOG NO. 6140-30	STARTING SERIAL NUMBER B69A	WIRING INSTRUCTION See Reverse Side	

FIG.	PART NO.	DESCRIPTION OF PART	NO. REQ.
1	05-55-0620	M5 Hex Nut	(1)
2	06-65-1200	Pin	(1)
3	05-88-1200	M4 x 16 T-20 Screw	(2)
4	05-88-1210	M4 x 14 T-20 Screw	(4)
5	05-88-1250	M4 x 20 T-20 Screw	(4)
6	05-88-1275	M4 x 70 Screw	(2)
7	05-88-1280	M4 x 10 T-20 Screw	(2)

Functionally check Spindle Lock mechanism. Spindle Lock must return briskly when released from engagement in Gear (50).

NOTE:
Torque Armature Nut (1) to 47 in/lbs, 55 kg/cm.



EXAMPLE:
Component Parts (Small #)
Are Included When Ordering
The Assembly (Large #).

*** LUBRICATION NOTE:**
When servicing the Gears (31 & 50) or the Gearcase (42), 90-95% of the old grease must be removed prior to new grease being added.

FIG.	PART NO.	DESCRIPTION OF PART	NO. REQ.
8	05-88-1300	M4 x 28 T-20 Screw	(2)
9	31-92-0420	Paddle Trigger	(1)
10	05-90-0225	M4 Spring Washer	(6)
12	10-15-1230	Warning Label	(1)
14	12-20-6116	Service Nameplate	(1)
15	14-29-0300	Gearcase Assembly	(1)
17	14-34-0710	Rear Handle Assembly	(1)
18	14-73-0400	Spindle/Hub Assembly	(1)
19	14-78-0500	Paddle Trigger Assembly	(1)
20	16-10-7005	Service Armature Assembly	(1)
21	18-07-2290	Service Field	(1)
22	22-22-1560	Carbon Brush Assembly	(2)
23	22-64-2020	Cord	(1)
25	23-66-2665	Switch	(1)
26	31-50-2170	Motor Housing	(1)
28	31-53-0240	Plug	(1)
29	40-50-1480	Torsion Spring	(1)
30	42-42-0620	Lock-Off Lever	(1)
31	32-60-1390	Bevel Pinion	(1)
32	34-40-0560	O-Ring	(1)
33	40-50-1625	Lock-On Spring	(1)
34	42-14-0475	Fan Baffle	(1)

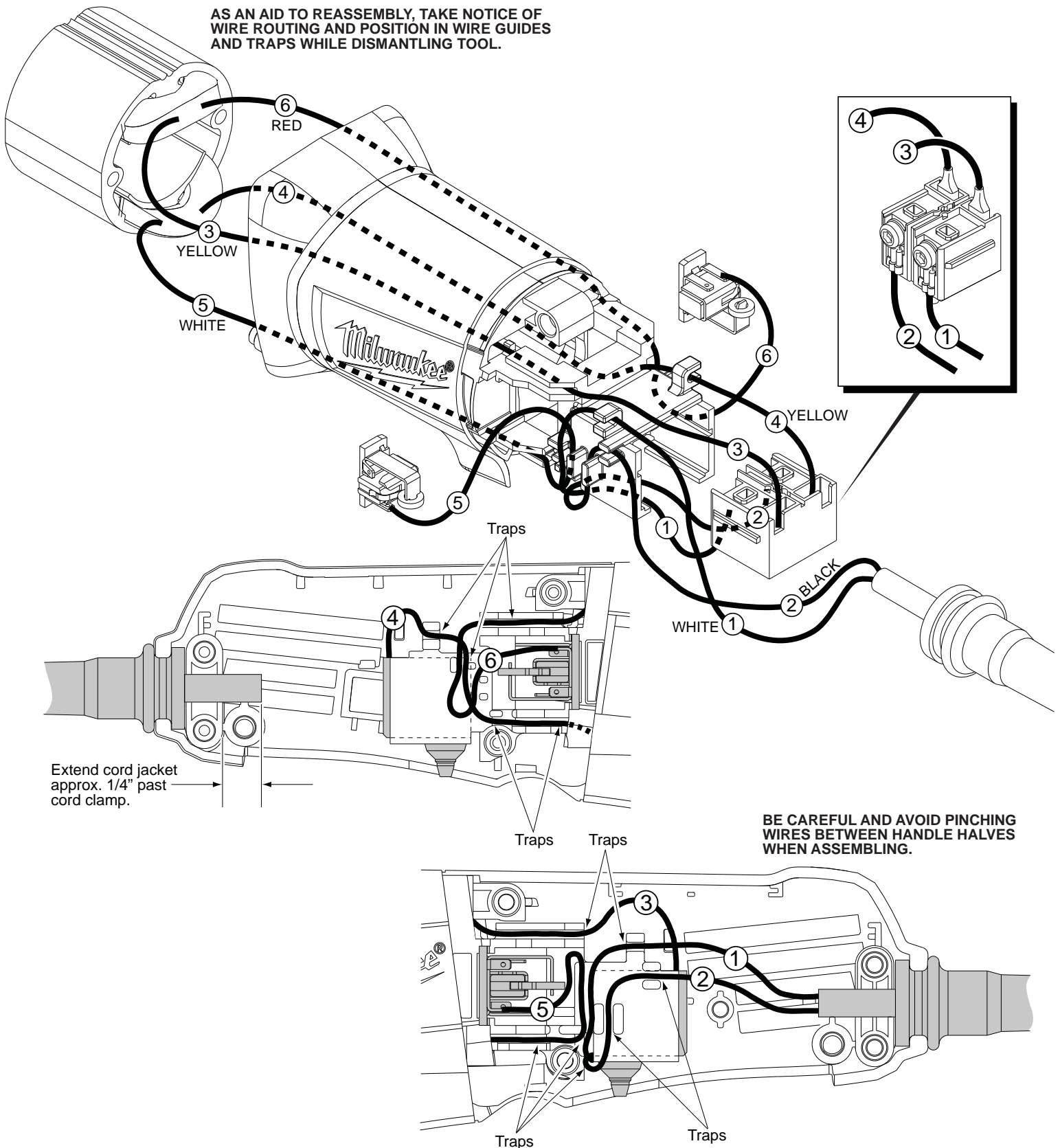
FIG.	PART NO.	DESCRIPTION OF PART	NO. REQ.
35	42-42-0660	Lock-On Button	(1)
36	43-34-0035	Disk Flange	(1)
37	44-40-0035	Flange Nut	(1)
38	44-66-0450	Bearing Retainer	(1)
39	44-76-0210	Strain Relief	(1)
40	02-04-0620	Ball Bearing	(1)
41	02-50-1195	Needle Bearing	(1)
42	28-14-0710	Gear Housing	(1)
43	34-40-0450	O-Ring	(1)
44	40-50-1330	Compression Spring	(1)
45	42-42-0575	Spindle Lock Button	(1)
46	42-42-0580	Spindle Lock Tube	(1)
47	44-60-1190	Spindle Lock Pin	(1)
48	02-04-1150	Ball Bearing	(1)
49	28-53-0400	Lower Gearcase Hub	(1)
50	32-05-1090	Bevel Gear	(1)
51	34-80-2275	Retaining Ring	(1)
52	38-50-1275	Spindle	(1)
53	02-04-2110	Ball Bearing	(1)
54	45-88-0406	Washer	(1)
60	43-54-1070	4.5" T27 Guard Assembly	(1)
61	43-54-1090	4.5" T1 Guard Assembly	(1)
	42-62-0100	Side Handle (Not Shown)	(1)
	49-96-7205	Spanner Wrench (Not Shown)	(1)

FIG. LUBRICATION (*See lubrication note above):
31,50 Type "Y" Grease, No. 49-08-5270, Must Be Applied To All Gear Teeth.

32,42 Lightly coat with grease O-Ring and bearing bore in Gearcase.

42 .3 - .4 Ounces (9-12 Grams) Type "Y" Grease, No. 49-08-5270.

AS AN AID TO REASSEMBLY, TAKE NOTICE OF WIRE ROUTING AND POSITION IN WIRE GUIDES AND TRAPS WHILE DISMANTLING TOOL.



WIRING SPECIFICATIONS

Wire No.	Wire Color	Origin or Part No.	Gauge	Length	Terminals, Connectors and End Wire Preparation
1	White	22-64-2020	--	--	Component of cord set.
2	Black	22-64-2020	--	--	Component of cord set.
3	Yellow	18-07-2290	--	--	Component of field.
4	Yellow	18-07-2290	--	--	Component of field.
5	White	18-07-2290	--	--	Component of field.
6	Red	18-07-2290	--	--	Component of field.

BULK LEAD WIRE - BULLETIN 58-01-0003

NOTE:

All leads must be held to $\pm 1/16"$.
All lead lengths are before stripping.

TERMINAL DESCRIPTION		
Code	Part No.	Qty.
CONNECTOR DESCRIPTION		