

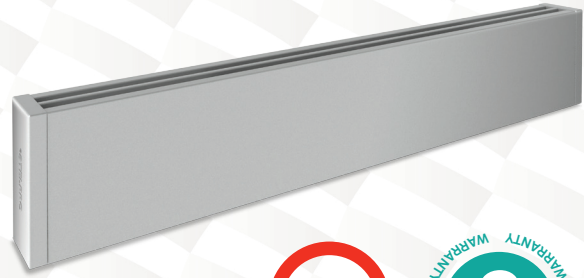
MINI ARCHITECTURAL BASEBOARD

ALUMINUM - AALUX1 SERIES



THE SMALLEST IN ITS CLASS

A mini baseboard that lives up to the great expectations of designers, architects and engineers alike. Only 4 1/2 in. high and 2 in. deep, the AALUX1 can be installed in locations previously thought impossible. Discreetly blending into the decor, the AALUX1 mini architectural baseboard heater is solid, powerful and elegant all at once. Even though it is compact in size, the AALUX1 conforms to the strictest of norms.



EXTRUDED ALUMINUM FRONT COVER WITH A UNIQUE AND LUXURIOUS DESIGN

EXTREMELY SOLID, IMPACT AND RUST RESISTANT

NEW STYLISH WHITE SATIN FINISH

VERSATILE

ADAPTS TO ANY BUILDING'S ARCHITECTURE

PERSONALIZED INSTALLATION

BLANK SECTIONS, PEDESTALS AND CLEAN BACKS AVAILABLE

IDEAL FOR:

COMMERCIAL BUILDINGS OR SHOPPING MALLS, HOSPITALS, OFFICES, HOTELS

COLORS

- standard: white, soft white
- luxurious finish: clear anodized (surcharge)
- optional: almond, black, textured charcoal, dark brown

FINISH

epoxy-polyester powdercoat or clear anodized finish

MANUFACTURING

- 2 in. x 4 1/2 in. compact profile
- solid 20-gauge steel cabinet
- extremely resistant extruded aluminum front cover with a thickness equivalent to 10 gauge
- bottom air intake and top air discharge
- thermal protection with automatic reset
- full-length wireway

ELEMENT

single tubular, stainless steel sheathed element with boxed aluminum fins for improved heat dissipation; the element is securely fastened at its center, floating in nylon sleeves at each end, eliminating expansion and contraction noises

CONTROL

- wall thermostat (not included) – the use of an electronic thermostat is strongly recommended
- built-in tamper-proof thermostat accessible without removing front grille, installed in the left junction box only (optional)
- low voltage relay kit installed in the left junction box only (optional)

INSTALLATION

- surface mounted
- wall or floor mounted with or without pedestal kit (optional)
- at least 2 in. from the floor
- wiring compartment at both ends of unit
- for a continuous effect, custom blank sections with a simple attach system are available (optional)

ACCESSORIES

PRODUCT	DESCRIPTION
ALUX1T12*	built-in tamper-proof single pole thermostat
ALUX1RE153*	built-in electronic low voltage relay [15 A @ 120 V-347 V]
ALUX1RE156*	built-in electronic low voltage relay [6 A @ 600 V]
ALUX1RE153T*	built-in electronic low voltage relay c/w transformer 24 V [15 A @ 208 V-347 V]
ALUX1DIS250*	disconnect switch [120 V-250 V]
ALUX1DIS600*	disconnect switch [277 V-600 V]
PK4*	pedestal kit - single (kit of two)
PK4D*	pedestal kit - double (kit of two)
ALUX1JS*	joiner strip (2 in.)
ALUX1IC90*	inside corner (back measures 5 7/8 in. long on each side)
ALUX1OC90*	outside corner (back measures 5 7/8 in. long on each side)
ALUX1CB**	clean back (fully finished, no mounting holes or knockouts)

Electronic relays can receive a PWM (pulsed width modulation) or digital (on/off) signal

* Add W for white, SW for soft white or CAP for clear anodized (paint)

* Add W for white, SW for soft white or CA for clear anodized (finish)

* Factory installed

TECHNICAL SPECIFICATIONS

COMMERCIAL USE 150 W PER LINEAR FOOT			RESIDENTIAL USE 100 W PER LINEAR FOOT			VOLTAGE	LENGTH	WEIGHT
CODE	WATTS	BTU/H	CODE	WATTS	BTU/H	VOLTS	IN.	LB
AALUX106038	300	1024	---	---	---	208	23 5/8	6.4
AALUX106032	300/225	1024	---	---	---	240/208	23 5/8	6.4
AALUX109048	450	1536	AALUX109038	300	1024	208	35 7/16	9.1
AALUX109042	450/338	1536	AALUX109032	300/225	1024	240/208	35 7/16	9.1
AALUX109047	450	1536	AALUX109037	300	1024	277	35 7/16	9.1
AALUX112068	600	2048	AALUX112048	400	1365	208	47 1/4	13.6
AALUX112062	600/450	2048	AALUX112042	400/300	1365	240/208	47 1/4	13.6
AALUX112067	600	2048	AALUX112047	400	1365	277	47 1/4	13.6
AALUX115078	750	2560	AALUX115058	500	1706	208	59 1/16	16.8
AALUX115072	750/563	2560	AALUX115052	500/375	1706	240/208	59 1/16	16.8
AALUX115077	750	2560	AALUX115057	500	1706	277	59 1/16	16.8
AALUX115075	750	2560	AALUX115055	500	1706	480	59 1/16	16.8
AALUX118098	900	3071	AALUX118068	600	2047	208	70 7/8	20.0
AALUX118092	900/675	3071	AALUX118062	600/450	2047	240/208	70 7/8	20.0
AALUX118097	900	3071	AALUX118067	600	2047	277	70 7/8	20.0
AALUX118095	900	3071	AALUX118065	600	2047	480	70 7/8	20.0
AALUX121108	1050	3583	AALUX121078	700	2388	208	82 11/16	23.1
AALUX121102	1050/788	3583	AALUX121072	700/525	2388	240/208	82 11/16	23.1
AALUX121107	1050	3583	AALUX121077	700	2388	277	82 11/16	23.1
AALUX121105	1050	3583	AALUX121075	700	2388	480	82 11/16	23.1
AALUX124128	1200	4095	AALUX124088	800	2730	208	94 1/2	26.7
AALUX124122	1200/900	4095	AALUX12482	800/600	2730	240/208	94 1/2	26.7
AALUX124127	1200	4095	AALUX124087	800	2730	277	94 1/2	26.7
AALUX124125	1200	4095	AALUX124085	800	2730	480	94 1/2	26.7
AALUX127148	1350	4607	AALUX127098	900	3071	208	106 5/16	26.7
AALUX127142	1350/1013	4607	AALUX127092	900/675	3071	240/208	106 5/16	26.7
AALUX127147	1350	4607	AALUX127097	900	3071	277	106 5/16	26.7
AALUX127145	1350	4607	AALUX127095	900	3071	480	106 5/16	26.7

Add W for white, SW for soft white or CA for clear anodized (finish) (see page 10 for optional colors and contact your °STELPRO representative for all other colors)
 --- not available

TECHNICAL DRAWINGS

