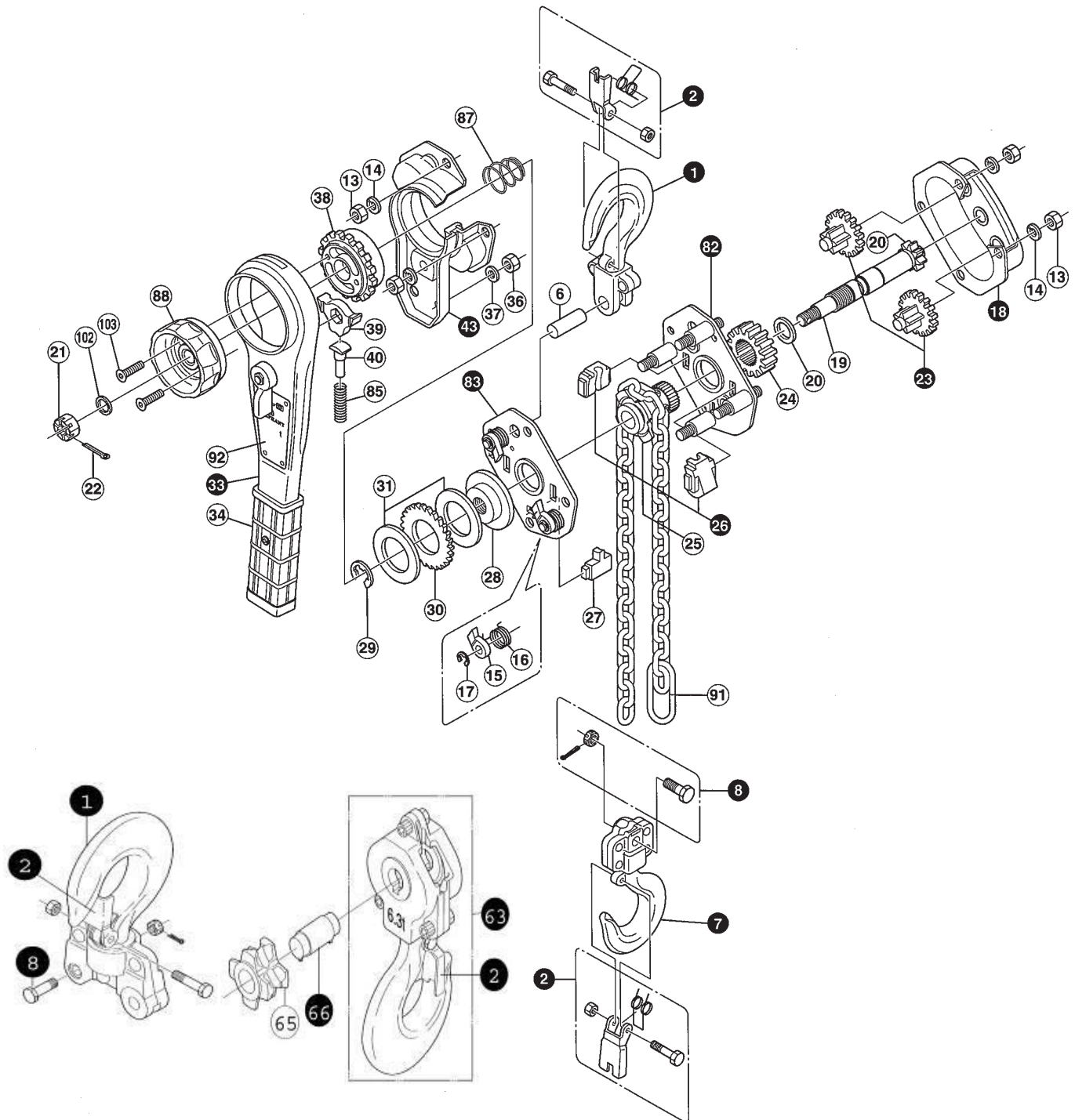


JET MINI MITE II LEVER CHAIN HOIST PRODUCT 110512,110513,110515,110516



JET MINI MITE II LEVER CHAIN HOIST PRODUCT 110512,110513,110515,110516

REF	PART NUMBER	DESCRIPTION	REQ	REF	PART NUMBER	DESCRIPTION	REQ
1	PEL-MM320-1	MM320-TOP HOOK ASS'Y.	1	1	PEL-MM630-1	MM630-TOP HOOK ASS'Y.	1
2	PEL-MM320-2	MM320-SAFETY LATCH ASS'Y.	1	2	PEL-MM630-2	MM630-SAFETY LATCH ASS'Y.	1
6	PEL-MM320-6	MM320-TOP HOOK PIN	1	6	PEL-MM630-6	MM630-TOP HOOK PIN	1
7	PEL-MM320-7	MM320-BOTTOM HOOK ASS'Y.	1	63	PEL-MM630-63	MM630-BOTTOM HOOK ASS'Y.	1
2	PEL-MM320-2	MM320-SAFETY LATCH ASS'Y.	1	2	PEL-MM630-2	MM630-SAFETY LATCH ASS'Y.	1
8	PEL-MM320-8	MM320-CHAIN STOP BOLT ASS'Y'.	1	65	PEL-MM630-65	MM630-IDLE SHEAVE	1
13	PEL-MM320-13	MM320-HEX. NUT	8	66	PEL-MM630-66	MM630-IDLE SHEAVE PIN	1
14	PEL-MM320-14	MM320-SPRING WASHER	8	13	PEL-MM630-13	MM630-HEX. NUT	8
18	PEL-MM320-18	MM320-GEAR COVER ASS'Y.	1	14	PEL-MM630-14	MM630-SPRING WASHER	8
19	PEL-MM320-19	MM320-PINION SHAFT	1	18	PEL-MM630-18	MM630-GEAR COVER ASS'Y.	1
20	PEL-MM320-20	MM320-WASHER FOR PINION SHAFT	1	19	PEL-MM630-19	MM630-PINION SHAFT	1
21	PEL-MM320-21	MM320-HEX. CASTLE NUT	1	20	PEL-MM630-20	MM630-WASHER FOR P SHAFT	1
22	PEL-MM320-22	MM320-COTTER PIN	1	21	PEL-MM630-21	MM630-HEX. CASTLE NUT	1
23	PEL-MM320-23	MM320-2ND & 3RD GEAR ASS'Y.	1PR	22	PEL-MM630-22	MM630-COTTER PIN	1
24	PEL-MM320-24	MM320-LOAD GEAR	1	23	PEL-MM630-23	MM630-2ND & 3RD GEAR ASS'Y.	1PR
25	PEL-MM320-25	MM320-LOAD SHEAVE	1	24	PEL-MM630-24	MM630-LOAD GEAR	1
26	PEL-MM320-26	MM320-CHAIN GUIDE ASS'Y	1	25	PEL-MM630-25	MM630-LOAD SHEAVE	1
27	PEL-MM320-27	MM320-CHAIN STRIPPER	1	26	PEL-MM630-26	MM630-CHAIN GUIDE ASS'Y	1
28	PEL-MM320-28	MM320-DISC HUB	1	27	PEL-MM630-27	MM630-CHAIN STRIPPER	1
29	PEL-MM320-29	MM320-E-RING FOR DISC HUB	1	28	PEL-MM630-28	MM630-DISC HUB	1
30	PEL-MM320-30	MM320-RATCHET WHEEL	1	29	PEL-MM630-29	MM630-E-RING FOR DISC HUB	1
31	PEL-MM320-31	MM320-FRICTION DISC	2	30	PEL-MM630-30	MM630-RATCHET WHEEL	1
33	PEL-MM320-33	MM320-LEVER ASS'Y	1	31	PEL-MM630-31	MM630-FRICTION DISC	2
34	PEL-MM320-34	MM320-LEVER GRIP	1	33	PEL-MM630-33	MM630-LEVER ASS'Y	1
92	PEL-MM320-92	MM320-NAME PLATE	1	34	PEL-MM630-34	MM630-LEVER GRIP	1
36	PEL-MM320-36	MM320-HEX. NUT	2	92	PEL-MM630-92	MM630-NAME PLATE	1
37	PEL-MM320-37	MM320-SPRING WASHER	2	36	PEL-MM630-36	MM630-HEX. NUT	2
38	PEL-MM320-38	MM320-FEED GEAR	1	37	PEL-MM630-37	MM630-SPRING WASHER	2
39	PEL-MM320-39	MM320-RATCHET FOR FEED GEAR	1	38	PEL-MM630-38	MM630-FEED GEAR	1
40	PEL-MM320-40	MM320-RATCHET SPRING PIN	1	39	PEL-MM630-39	MM630-RATCHET FEED GEAR	1
43	PEL-MM320-43	MM320-LEVER COVER SET	1	40	PEL-MM630-40	MM630-RATCHET SPRING PIN	1
82	PEL-MM320-82	MM320-GEAR SIDE PLATE ASSY.	1	43	PEL-MM630-43	MM630-LEVER COVER SET	1
83	PEL-MM320-83	MM320-LEVER SIDE PLATE ASSY.	1	82	PEL-MM630-82	MM630-GEAR SIDE PLATE ASSY.	1
15	PEL-MM320-15	MM320-PAWL	2	83	PEL-MM630-83	MM630-LEVER SIDE PLATE ASSY.	1
16	PEL-MM320-16	MM320-PAWL SPRING	2	15	PEL-MM630-15	MM630-PAWL	2
17	PEL-MM320-17	MM320-E-RING FOR PAWL	2	16	PEL-MM630-16	MM630-PAWL SPRING	2
85	PEL-MM320-85	MM320-RATCHET SPRING	1	17	PEL-MM630-17	MM630-E-RING FOR PAWL	2
87	PEL-MM320-87	MM320-SPRING FOR FLOATING	1	85	PEL-MM630-85	MM630-RATCHET SPRING	1
88	PEL-MM320-88	MM320-FEED HANDLE	1	87	PEL-MM630-87	MM630-SPRING FOR FLOATING	1
91	PEL-MM320-91	MM320-CHAIN STOPPER	1	88	PEL-MM630-88	MM630-FEED HANDLE	1
102	PEL-MM320-102	MM320-CHECK WASHER	1	91	PEL-MM630-91	MM630-CHAIN STOPPER	1
103	PEL-MM320-103	MM320-COUNTERSUNK BOLT	2	102	PEL-MM630-102	MM630-CHECK WASHER	1
				103	PEL-MM630-103	MM630-COUNTERSUNK BOLT	2