



**OWNER'S MANUAL
JLP Series Pullers
1/4 Ton – 6 Ton**



JET EQUIPMENT & TOOLS, INC.
A WMH Company
www.jettools.com

P.O. BOX 1349
Auburn, WA 98071-1349
e-mail jet@jettools.com

Phone: 253-351-6000
Fax: 1-800-274-6840
M-187705 09/2000

Important Information

**1-YEAR
LIMITED WARRANTY**

**JET offers a one-year limited
warranty on this product**

REPLACEMENT PARTS

Replacement parts for this tool are available directly from JET Equipment & Tools. To place an order, call 1-800-274-6848. Please have the following information ready:

1. Visa, MasterCard, or Discover Card number.
2. Expiration date.
3. Part number listed within this manual.
4. Shipping address other than a Post Office box.

REPLACEMENT PART WARRANTY

JET Equipment & Tools makes every effort to assure that parts meet high quality and durability standards and warrants to the original retail consumer/purchaser of our parts that each such part(s) to be free from defects in materials and workmanship for a period of thirty (30) days from the date of purchase.

PROOF OF PURCHASE

Please retain your dated sales receipt as proof of purchase to validate the warranty period.

LIMITED TOOL AND EQUIPMENT WARRANTY

JET makes every effort to assure that its products meet high quality and durability standards and warrants to the original retail consumer/purchaser of our products that each product be free from defects in materials and workmanship as follows: 1 YEAR LIMITED WARRANTY ON THIS JET PRODUCT. Warranty does not apply to defects due directly or indirectly to misuse, abuse, negligence or accidents, repairs or alterations outside our facilities or to a lack of maintenance. JET LIMITS ALL IMPLIED WARRANTIES TO THE PERIOD SPECIFIED ABOVE FROM THE DATE THE PRODUCT WAS PURCHASED AT RETAIL. EXCEPT AS STATED HEREIN, ANY IMPLIED WARRANTIES OR MERCHANTABILITY AND FITNESS ARE EXCLUDED. SOME STATES DO NOT ALLOW LIMITATIONS ON HOW LONG THE IMPLIED WARRANTY LASTS, SO THE ABOVE LIMITATION MAY NOT APPLY TO YOU. JET SHALL IN NO EVENT BE LIABLE FOR DEATH, INJURIES TO PERSONS OR PROPERTY OR FOR INCIDENTAL, CONTINGENT, SPECIAL OR CONSEQUENTIAL DAMAGES ARISING FROM THE USE OF OUR PRODUCTS. SOME STATES DO NOT ALLOW THE EXCLUSION OR LIMITATION OF INCIDENTAL OR CONSEQUENTIAL DAMAGES, SO THE ABOVE LIMITATION OR EXCLUSION MAY NOT APPLY TO YOU. To take advantage of this warranty, the product or part must be returned for examination, postage prepaid, to an authorized service station designated by our Auburn office. Proof of purchase date and an explanation of the complaint must accompany the merchandise. If our inspection discloses a defect, JET will either repair or replace the product or refund the purchase price, if we cannot readily and quickly provide a repair or replacement, if you are willing to accept such refund. JET will return repaired product or replacement at JET's expense, but if it is determined there is no defect, or that the defect resulted from causes not within the scope of JET's warranty, then the user must bear the cost of storing and returning the product. This warranty gives you specific legal rights, and you have other rights, which vary, from state to state.

JET Equipment & Tools • P.O. Box 1349, Auburn, WA 98071-1349 • (253) 351-6000

WARNING

- **Read and understand the entire contents of this manual before attempting to use the puller.**
- **This puller is designed and intended for use by properly trained and experienced personnel only. If you are not familiar with the proper and safe use of a puller, do not use until proper training and knowledge have been obtained.**
- Do not use to lift people or loads over people.
- Do not exceed the rated capacity of the puller.
- Do not use a “cheater pipe” to extend the length of the puller handle.
- Do not strike the handle with a hammer or any other object.
- Do not use puller chain as a sling. This may cause damage to the chain.
- Always inspect the puller for damage prior to use. If puller is damaged, do not use until it has been repaired or replaced.
- Do not use more than one puller to lift or move a load. If this is unavoidable, each puller must have the same capacity as the load to be moved.
- Never allow chain to “set” over sharp edges. All pulls or lifts must be made with straight chain that is free of obstacles.
- If the puller lever is difficult to operate, then the load exceeds the capacity of the puller. Select a puller of larger capacity.
- Do not use a puller if the chain is twisted, kinked or damaged.
- Do not operate puller unless load is centered between top and bottom hooks.
- Always take time to study the job to be performed and choose the safest method. Do not place yourself or other people in an unsafe position.
- Leave all internal maintenance and inspections to a qualified JET repair station.
- Replace chain with factory replacement chain only. Do not use any other type of chain.
- Never use the puller if either hook is stretched, deformed, or has a broken or missing safety latch. Always replace the safety latch and/or the hook before placing the puller back in service.
- Understand and follow all procedures as set forth in American National Standards titled “Performance Standard for Manually Lever Operated Chain Hoists”. ANSI/ASME HST-3M. This standard is available through the American Society of Mechanical Engineers, 345 East 47th St., NY, NY 10017
- Failure to comply with all of these warnings may cause serious injury and/or damage to property.

Specifications:

JLP Series Pullers

Model Numbers	JLP-25-5
Stock Number	187730
Load Chain Diameter	4mm
Number of Falls	1
Rated Capacity	1/4 Ton
Minimum Distance Between Hooks	9-1/8"
Standard Lift	5'
Lbs. Pull to Lift Capacity	57
Lever Length.....	10-1/4"
Net Weight.....	6 lbs.

Model Numbers	JLP-50-5, JLP-50-10
Stock Number	187705 (5') 187706 (10')
Load Chain Diameter	5mm
Number of Falls	1
Rated Capacity	1/2 Ton
Minimum Distance Between Hooks	11-7/8"
Standard Lift	5' (JLP-50-5), 10' (JLP-50-10')
Lbs. Pull to Lift Capacity	79
Lever Length.....	10-1/4"
Net Weight.....	11 lbs.(5'), 14 lbs.(10')

Model Numbers	JLP-75-5, JLP-75-10, JLP-75-15, JLP-75-20
Stock Number	187707 (5') 187708 (10'), 187709 (15'), 187710 (20')
Load Chain Diameter	6mm
Number of Falls	1
Rated Capacity	3/4 Ton
Minimum Distance Between Hooks	12-7/16"
Standard Lift	5' (JLP-75-5), 10' (JLP-75-10'), 15' (JLP-75-15), 20' (JLP-75-20)
Lbs. Pull to Lift Capacity	32
Lever Length.....	10-1/4"
Net Weight.....	16 lbs.(5'), 19 lbs.(10'), 21 lbs.(15'), 24 lbs.(20')

Model Numbers	JLP-150-5, JLP-150-10, JLP-150-15, JLP-150-20
Stock Number	187711 (5'), 187712 (10'), 187713 (15'), 187714 (20')
Load Chain Diameter	8mm
Number of Falls	1
Rated Capacity	1-1/2 Ton
Minimum Distance Between Hooks	14"
Standard Lift	5' (JLP-150-5), 10' (JLP-150-10) 15' (JLP-150-15), 20' (JLP-150-20)
Lbs. Pull to Lift Capacity	42
Lever Length.....	16-1/8"
Net Weight.....	26 lbs.(5'), 31 lbs. (10'), 36 lbs.(15'), 41 lbs.(20')

Model Numbers	JLP-300-5, JLP-300-10, JLP-300-15, JLP-300-20
Stock Number	187715 (5') , 187716 (10'), 187717 (15'), 187718 (20')
Load Chain Diameter	10mm
Number of Falls	1
Rated Capacity	3 Ton
Minimum Distance Between Hooks	19-3/4"
Standard Lift	5' (JLP-300-5), 10' (JLP-300-10), 15' (JLP-300-15), 20' (JLP-300-20)
Lbs. Pull to Lift Capacity	72
Lever Length.....	16-1/8"
Net Weight.....	44 lbs.(5'), 52 lbs.(10'), 59 lbs. (15'), 67 lbs. (20')

Model Number	JLP-600-5, JLP-600-20
Stock Number	187719 (5'), 187720 (20')
Load Chain Diameter	10mm
Number of Falls	2
Rated Capacity	6 Ton
Minimum Distance Between Hooks	24-7/16"
Standard Lift	5' (JLP-600-5), 20' (JLP-600-20)
Lbs. Pull to Lift Capacity	76
Lever Length.....	16-18"
Net Weight.....	66 lbs. (5'), 111 lbs. (20)

The specifications in this manual are given as general information and are not binding. JET Equipment and Tools reserves the right to effect, at any time and without prior notice, changes or alterations to parts, fittings, and accessory equipment deemed necessary for any reason whatsoever.

Prior to Operation

1. Support for the hoist may be hook, clevis pin, trolley, or beam clamp. Whatever method of suspension is chosen, the support components must be rated equal to, or greater than the capacity of the chain hoist.
2. With the lever in the up position, check for a clicking sound when the handle is rotated in a clockwise direction. Do not use if this sound is not present.
3. With the lever in the up position, check free play in handle rotation. Free play is measured by the distance the handle travels before resistance or gearing is felt. If free play has reached 3/4 of a turn, brake discs are worn and should be replaced by a JET authorized repair station.
4. If the puller has not been used for an extended period of time, check for proper operation before putting into service. Apply a light coat of 30W oil to the chain.
5. The brake mechanism must be kept clean and free from dirt, water, and oil. Never allow oil to penetrate the braking mechanism. Always keep your puller clean and store in a clean, dry location.
6. It is not necessary to oil the chain. However, a periodic coating of 30W oil will cause easier operation and prolong the life of the chain.
7. Check the chain for damage. Replace damaged chain before using the puller.

⚠ WARNING

The load chain supplied with your JET puller is designed, manufactured, and tested for proper fit and durability. Over a period of time, the chain may need to be replaced. For your own safety, use factory replacement chain only. Use of other than factory replacement chain may cause serious injury and/or damage to the puller.

8. The top and bottom hooks on your JET puller are designed to open and warn of an overload. It is important to check top and bottom hooks for proper opening. If the safety latch no longer contacts the hook opening, replace the hook. **Never side load the top or bottom hook; this practice is dangerous and could lead to serious injury.**
9. If the vertical angle, at the neck, of the bottom or top hook reaches 10°, replace the hook, (Fig. 1).

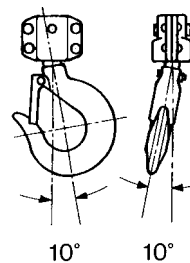
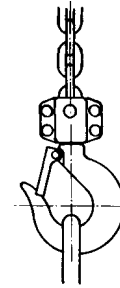


Fig. 1

Operation

1. Set the top hook securely.



correct

Fig. 2

2. Center load on bottom hook correctly, (Fig. 2). Incorrect loading is dangerous to the operator, the puller, and the load. **Never**, load the hook in front of the safety latch (A, Fig. 3), **never** load the hook tip (B, Fig. 3), **never** load the hook off the centerline (C, Fig. 3), **never** load the hook sideways (D, Fig. 3).

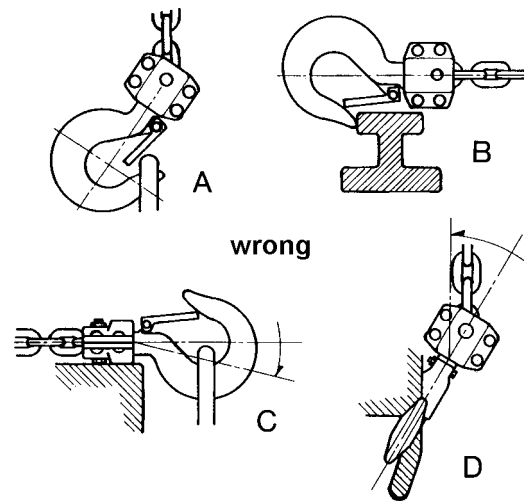


Fig. 3

3. Place direction lever on handle in the center neutral position, (Fig. 4) so that chain free-wheels. **Note:** Chain will only free wheel when there is no load. Take up slack by pulling on loose or free end or by turning hand wheel.

4. Move direction lever to the up position, (Fig. 4). Ratchet handle to raise or pull load. **Do not** overload the puller.

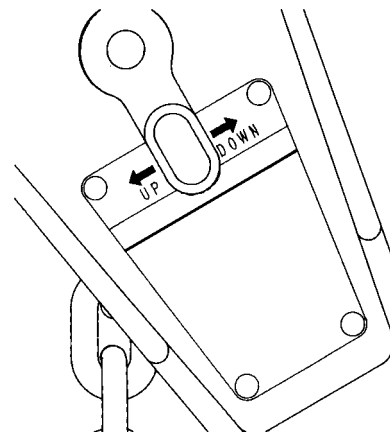
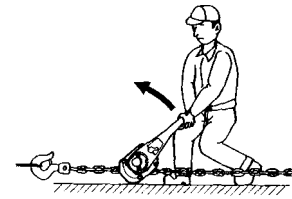


Fig. 4

5. To release or lower load, turn direction lever on handle to the down position, (Fig. 4) and ratchet handle.

Precautions

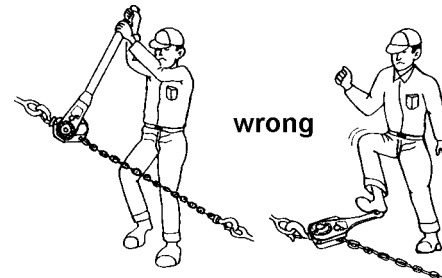
- During pulling operations, the operator should stand near the side of the top hook on the opposite side of the lever. If the hand should slip off the lever, the lever will spring back away from the operator, (Fig. 5).



correct

Fig. 5

- During lifting operations, **do not** stand under the load.



wrong

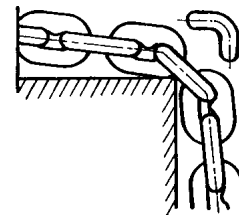
A

B

Fig. 6

- **Do not** use an extension on the lever (A, Fig. 6). **Do not** use a foot to apply pressure to the lever (B, Fig. 6).

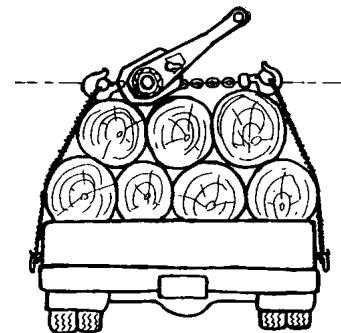
- Prevent the chain from dragging over sharp edges or corners. These will cause links to weaken, bend, or break, (Fig. 7).



wrong

Fig. 7

- When using a wire rope sling, the puller must be applied along a straight line parallel to the surface it is resting on, (Fig. 8).

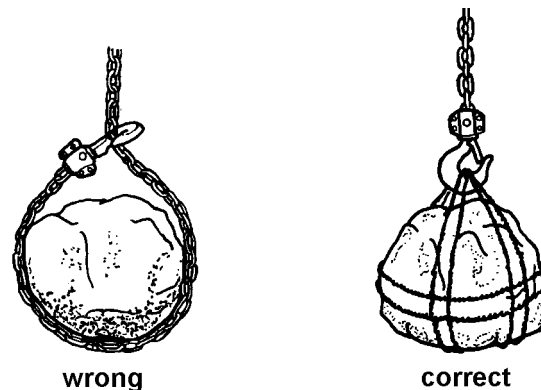


correct

Fig. 8

- When lifting loads, hook the load with slings. **Do not use the puller chain as a sling**, (Fig. 9).

- Both ends of a sling or rope must be completely on the inside of the safety latch before pulling or lifting the load. **Do not** put one end on the inside of the latch and leave the other end on the hook end outside the latch.



wrong

correct

Fig. 9

JET Model JLP Series Pullers

Allowable Limits for Load Chain and Hooks

Load Chain

Capacity	5 Links Normal	5 Links Limit
1/4 ton	2.36"	2.43"
1/2 ton	2.95"	3.04"
3/4 ton	3.54"	3.65"
1-1/2 ton	4.72"	4.87"
3 ton	5.91"	6.08"
6 ton	5.91"	6.08"

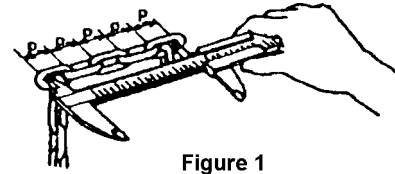


Figure 1

Carefully inspect the entire load chain. As illustrated in Figure 1, measure five consecutive links with calipers to measure the length. Check every three feet and especially where excessive wear is indicated. Any load chain that shows noticeable deformation or heat influence must be replaced with a new one. **Never** extend load chain by welding a second piece to the original.

Hooks (Top & Bottom)

Capacity	Standard Throat Opening	Throat Opening Limit
1/4 ton	0.87"	0.95"
1/2 ton	1.1"	1.21"
3/4 ton	1.18"	1.3"
1-1/2 ton	1.42"	1.56"
3 ton	1.73"	1.91"
6 ton	1.97"	2.17"

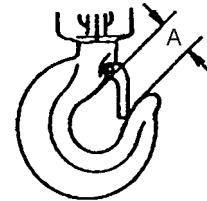
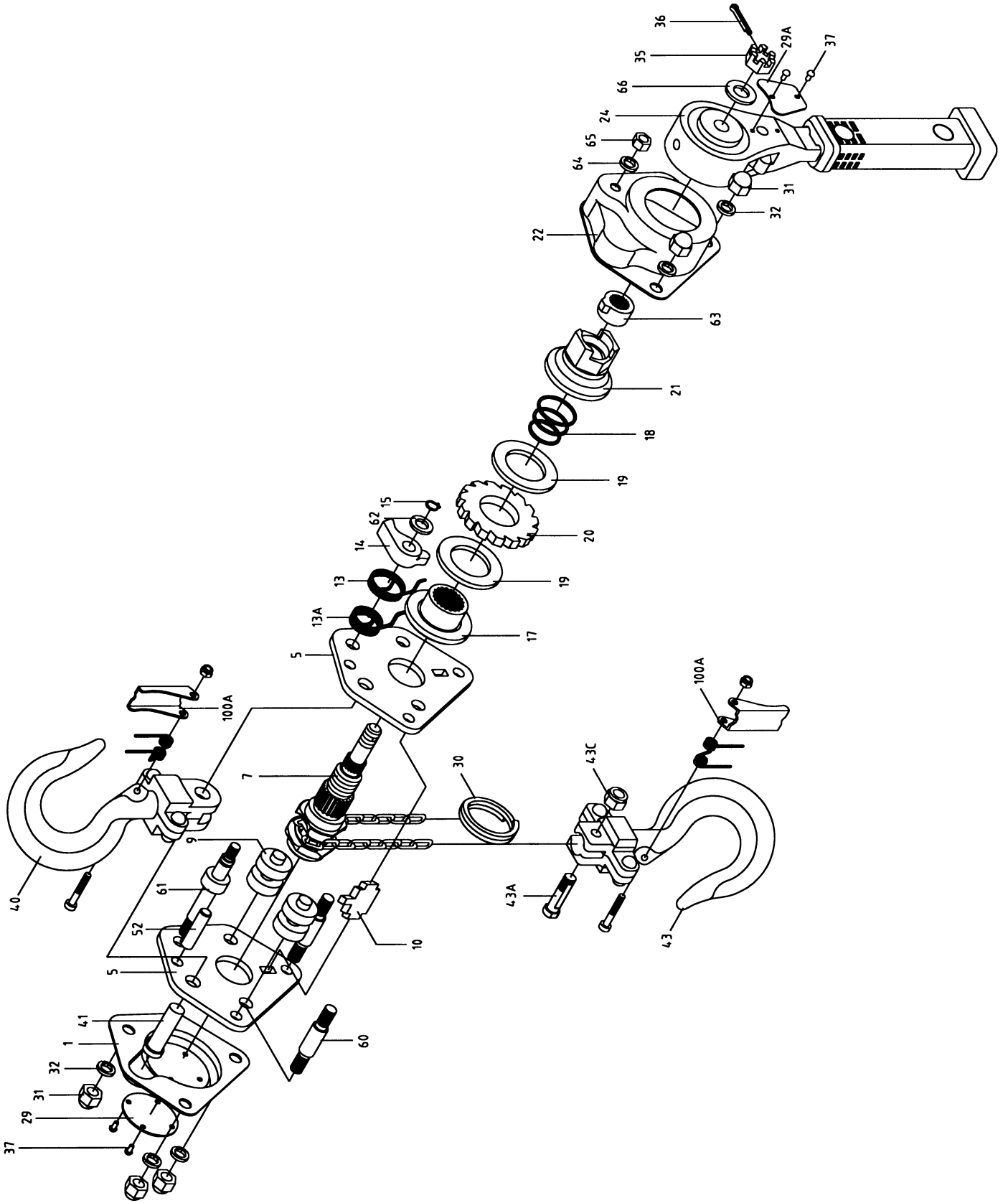


Figure 2

Replace the hook when "A" in Figure 2 is wider than Limit A in the table above. **Never** heat treat the hook or attach anything to the hook by welding.

Parts Breakdown for JLP-25-5



Parts List for the JLP Series Pullers

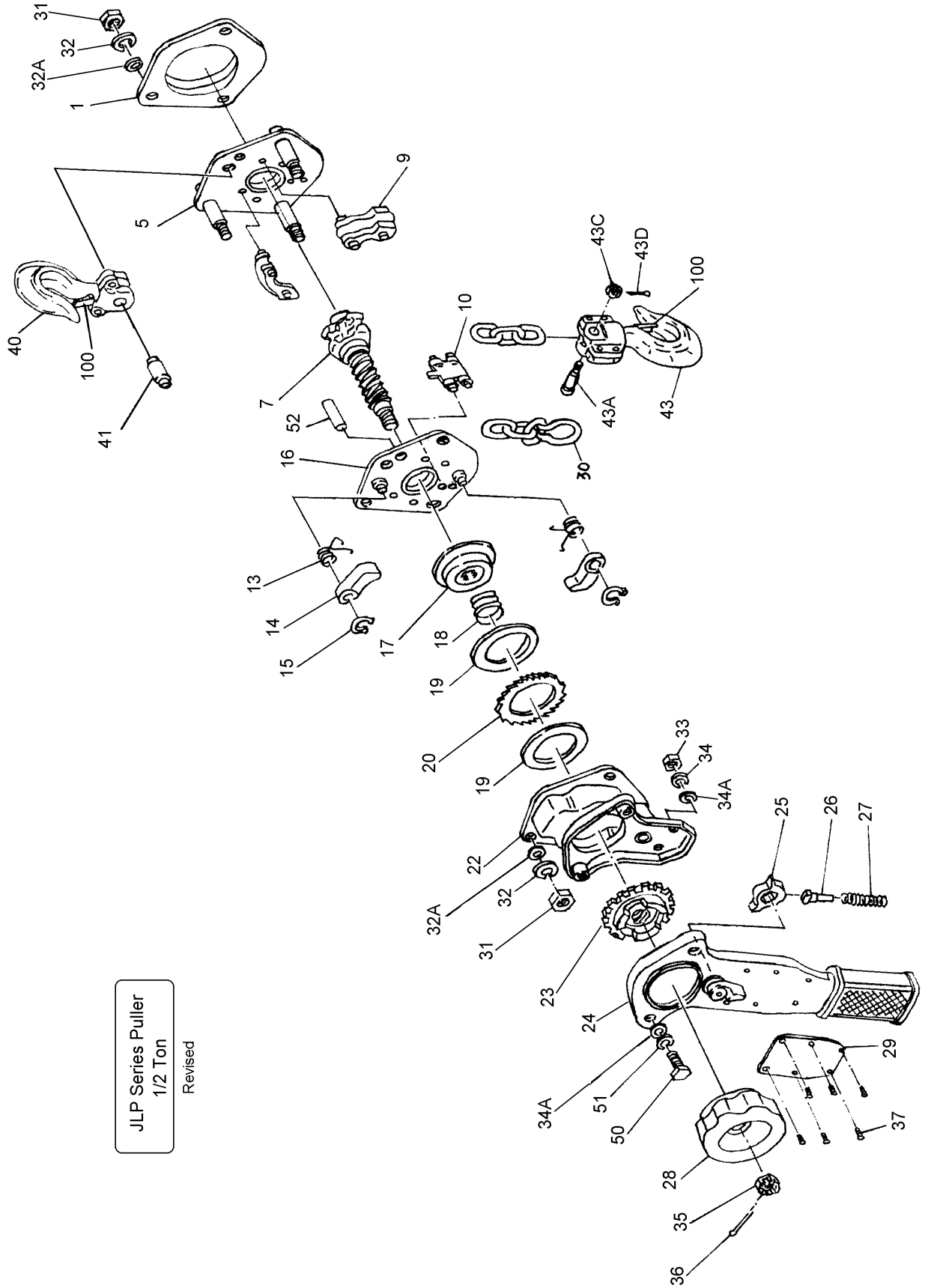
Note: Parts listed under each assembly are parts that make up that assembly.

JLP-25

Index No.	Part No.	Description	Size	Qty.
1	JLP25-1	Cover		1
5	JLP25-5	Side Plate		2
7	JLP25-7	Load Shaft		1
9	JLP25-9	Guide Roller		2
10	JLP25-10	Stripper		1
13	JLP25-13	Pawl Spring		1
13A	JLP25-13A	Pawl Spring A		1
14	JLP25-14	Pawl		1
15	JLP25-15	Snap Ring	6	1
17	JLP25-17	Disk Hub		1
18	JLP25-18	Spring		1
19	JLP25-19	Friction Disc	35x22x2.5	2
20	JLP25-20	Ratchet Disc		1
21	JLP25-21	Feed Gear		1
22	JLP25-22	Brake Cover		1
24	JLP25-24	Lever Handle Assembly		1
		Handle Lever		1
		Change Over Shaft		1
		Selector Shaft		1
		Steel Bolt	φ5	1
		Spring		1
		Rubber Grip		1
		Fixing Bolt		2
		Indicating Plate		1
		Rivet		2
		Fixing Rivet		2
		Hoop		1
		Spring		1
		Change Over Gear		1
29	JLP25-29	Name Plate		1
29A	JLP25-29A	Indicating Plate		1
30	JLP25-30	Chain Stop		1
31	JLP25-31	Cap Nut	M6	5
32	JLP25-32	Lock Washer	M6	5
35	JLP25-35	Castle Nut	M8	1
36	JLP25-36	Split Pin	2x16	1
37	JLP25-37	Rivet	2x4	6
40	JLP25-40	Top Hook Assembly		1
		Top Hook		1
		Safety Latch		1
		Double Spring		1
		Screw	3x20	1
		Self-lock Nut	M3	1
41	JLP25-41	Top Hook Shaft		1
43	JLP25-43	Bottom Hook Assembly		1
		Bottom Hook		1
		Safety Latch		1
		Double Spring		1
		Screw	3x20	1

Index No.	Part No.	Description	Size	Qty.
		Self-lock Nut	M3	1
43A	JLP25-43A	Shaft		1
43C	JLP25-43C	Self-lock Nut	M6	1
52	JLP25-52	Special Pin		1
60	JLP25-60	Stay Bolt A		2
61	JLP25-61	Stay Bolt B		1
62	JLP25-62	Pawl Washer		1
63	JLP25-63	Spline Cam		1
64	JLP25-64	Lock Washer	M5	1
65	JLP25-65	Hex Nut	M5	1
66	JLP25-66	Flat Washer	M8	1
100A	JLP25-100A	Safety Latch Kit		1
		Double Spring		1
		Screw	3x20	1
		Self-lock Nut	M3	1
	187729	Chain	4mm	

Parts Breakdown for JLP-50



JLP Series Puller
1/2 Ton
Revised

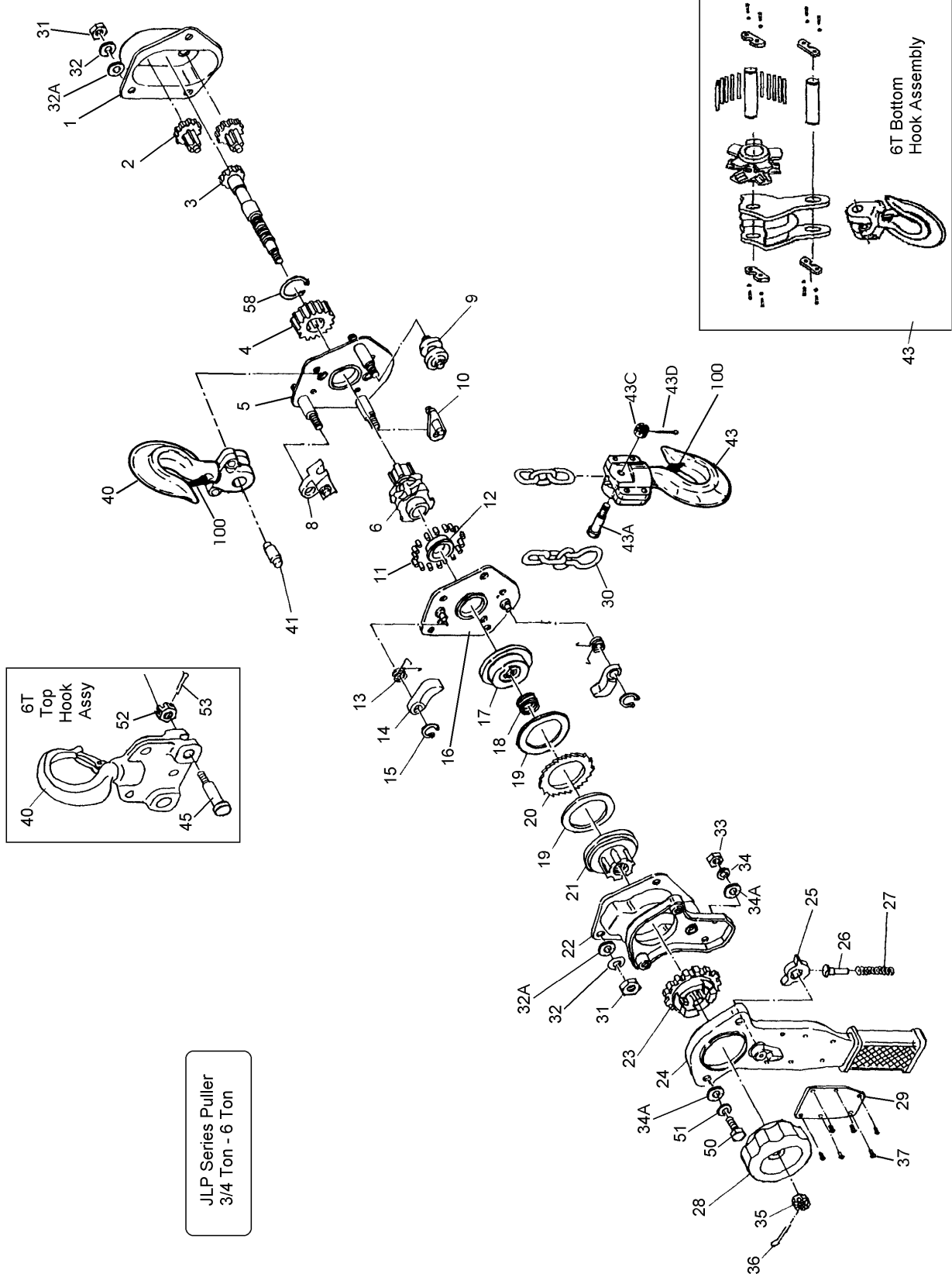
JLP-50

Index No.	Part No.	Description	Size	Qty.
1	JLP50-1	Cover		1
5	JLP50-5	Cover Side Plate Assembly (serial #6253 and lower)		1
		Cover Side Plate		1
		Stay Bolt		3
		Race		1
		Guide Plate		1
		Rivet	4x10	2
	JLP50-5A	Cover Side Plate Assembly (serial #8100 and higher)		1
		Cover Side Plate		1
		Stay Bolt		3
		Race		1
7	JLP50-7	Load Shaft		1
9	JLP50-9	Guide Roller (serial #6253 and lower)		2
	JLP50-9A	Guide Block (serial #8001 and higher)		2
10	JLP50-10	Stripper (serial #6253 and bwer)		1
	JLP50-10A	Stripper (serial #8001 and higher)		1
13	JLP75-13	Pawl Spring (1/2, 3/4T)		2
14	JLP50-14	Pawl		2
15	JLP75-15	Snap Ring (1/2, 3/4T)	8	2
16	JLP50-16	Lever Side Plate Assembly (serial #6253 and lower)		1
		Lever Side Plate		1
		Race		1
		Pawl Pin		2
	JLP50-16A	Lever Side Plate Assembly (serial #8001 and higher)		1
		Lever Side Plate		1
		Race		1
		Pawl Pin		2
17	JLP50-17	Disc Hub		1
18	JLP75-18	Spring (1/2, 3/4, 1-1/2T)		1
19	JLP50-19	Friction Disc		2
20	JLP50-20	Ratchet Disc		1
22	JLP50-22	Brake Cover Assembly		1
		Brake Cover		1
		Handle Case		1
		Nut		2
		Bushing		1
23	JLP50-23	Change Over Gear		1
24	JLP75-24	Lever Handle Assembly (1/2, 3/4T)		1
		Lever Handle		1
		Selector Lever		1
		Change Over Shaft		1
		Cover		1
		Rivet	3x16	1
		Bolt		2
		Spring Seat		1
		Bushing		1
		Rubber Grip		1
25	JLP75-25	Change Over Pawl (1/2, 3/4T)		1
26	JLP75-26	Spring Shaft (1/2, 3/4T)		1
27	JLP75-27	Spring (1/2, 3/4T)		1
28	JLP75-28	Hand Wheel (1/2, 3/4T)		1
29	JLP50-29	Name Plate		1

Index No.	Part No.	Description	Size	Qty.
30	JLP75-30	Chain Stop		1
31	JLP75-31	Hex Nut (1/2, 3/4T)	M8	6
32	JLP75-32	Lock Washer (1/2, 3/4T)	M8	6
32A	JLP75-32A	Flat Washer (1/2, 3/4T)	M8	6
33	JLP75-33	Hex Nut (1/2, 3/4T)	M6	2
34	JLP75-34	Lock Washer (1/2, 3/4T)	M6	2
34A	JLP75-34A	Flat Washer (1/2, 3/4T)	M6	4
35	JLP75-35	Castle Nut (1/2, 3/4T)	M10	1
36	JLP75-36	Split Pin (1/2, 3/4T)	2.5x20	1
37	JLP75-37	Rivet (1/2-6T)	2.5x6	6
38	JLP50-38	Lock Washer	M5	2
39	JLP50-39	Screw	M5x8	2
40	JLP50-40	Top Hook Assembly		1
		Top Hook		1
		Safety Latch		1
		Double Spring		1
		Rivet	3x16	1
		Top Hook Block		2
		Rivet	5x20	2
41	JLP50-41	Top Hook Shaft		1
43	JLP50-43	Bottom Hook Assembly		1
		Bottom Hook		1
		Safety Latch		1
		Double Spring		1
		Rivet	3x16	1
		Bottom Hook Block		2
		Rivet	5x20	4
43A	JLP50-43A	Shaft		1
43C	JLP50-43C	Nut	M6	1
43D	JLP50-43D	Pin	1.6x14	1
50	JLP75-50	Screw (1/2, 3/4T)	M6x12	2
51	JLP75-51	Lock Washer (1/2, 3/4T)	M6	2
52	JLP50-52	Special Pin		1
100	JLP50-100	Safety Latch Kit		1
		Safety Latch		1
		Double Spring		1
		Rivet	3x16	1
	187721	Chain	5mm	1

Note: Top and bottom hooks are sold as an assembly only.

Parts Breakdown for JLP-75 thru JLP-600



JLP-75

Index No.	Part No.	Description	Size	Qty.
1	JLP75-1	Gear Case Assembly		1
		Gear Case		1
		Bushing		2
		Cover Plate		1
		Rivet	2x6	2
2	JLP75-2	Spur Gear Assembly		2
		Spur Gear		2
		Pinion Gear		2
3	JLP75-3	Drive Shaft		1
4	JLP75-4	Load Gear		1
5	JLP75-5	Gear Side Plate Assembly		1
		Gear Side Plate		1
		Stay Bolt		3
		Bushing		2
		Race "A"		1
6	JLP75-6	Load Sheave		1
8	JLP75-8	Guide Block		1
9	JLP75-9	Guide Roller		1
10	JLP75-10	Stripper		1
11	JLP75-11	Roller Kit (34 rollers)	3x5	1
12	JLP75-12	Bearing Race		1
13	JLP75-13	Pawl Spring (1/2, 3/4T)		2
14	JLP75-14	Pawl		2
15	JLP75-15	Snap Ring (1/2, 3/4T)	8	2
16	JLP75-16	Lever Side Plate Assembly		1
		Lever Side Plate		1
		Race "B"		1
		Pawl Pin		2
17	JLP75-17	Disc Hub		1
18	JLP75-18	Spring (1/2, 3/4, 1-1/2T)		1
19	JLP75-19	Friction Disc		2
20	JLP75-20	Ratchet Disc		1
21	JLP75-21	Feed Gear		1
22	JLP75-22	Brake Cover Assembly		1
		Brake Cover		1
		Handle Case		1
		Nut		2
		Bushing		1
23	JLP75-23	Change Over Gear		1
24	JLP75-24	Lever Handle Assembly (1/2, 3/4T)		1
		Lever Handle		1
		Selector Lever		1
		Change Over Shaft		1
		Cover		1
		Rivet	3x12	1
		Bolt		2
		Spring Seat		1
		Bushing		1
		Rubber Grip		1
25	JLP75-25	Change Over Pawl (1/2, 3/4T)		1
26	JLP75-26	Spring Shaft (1/2, 3/4T)		1
27	JLP75-27	Spring (1/2, 3/4T)		1
28	JLP75-28	Hand Wheel (1/2, 3/4T)		1

Index No.	Part No.	Description	Size	Qty.
29	JLP75-29	Name Plate		1
30	JLP75-30	Chain Stop (1/2, 3/4T)		1
31	JLP75-31	Hex Nut (1/2, 3/4T)	M8	6
32	JLP75-32	Lock Washer (1/2, 3/4T)	M8	6
32A	JLP75-32A	Flat Washer	M8	6
33	JLP75-33	Hex Nut (1/2, 3/4T)	M6	2
34	JLP75-34	Lock Washer (1/2, 3/4T)	M6	2
34A	JLP75-34	Flat Washer (1/2, 3/4T)	M6	4
35	JLP75-35	Castle Nut (1/2, 3/4T)	M10	1
36	JLP75-36	Split Pin (1/2, 3/4T)	2.5x20	1
37	JLP75-37	Rivet (1/2-6T)	2.5x6	6
40	JLP75-40	Top Hook Assembly		1
		Top Hook		1
		Safety Latch		1
		Double Spring		1
		Rivet	3x16	1
		Top Hook Block		2
		Rivet	5x20	2
41	JLP75-41	Top Hook Shaft		1
43	JLP75-43	Bottom Hook Assembly		1
		Bottom Hook		1
		Safety Latch		1
		Double Spring		1
		Rivet	3x16	1
		Bottom Hook Block		2
		Rivet	5x20	4
43A	JLP75-43A	Shaft		1
43C	JLP75-43C	Nut	M6	1
43D	JLP75-43D	Pin	1.6x14	1
50	JLP75-50	Screw (1/2, 3/4T)	M6x12	2
51	JLP75-51	Lock Washer (1/2, 3/4T)	M6	2
58	JLP75-58	Snap Ring	28	1
100	JLP75-100	Safety Latch Kit		1
		Safety Latch		1
		Double Spring		1
		Rivet	3x16	1
	187722	Chain	6mm	1

Note: Top and bottom hooks are sold as an assembly only.

JLP-150

Index No.	Part No.	Description	Size	Qty.
1	JLP150-1	Gear Case Assembly		1
		Gear Case		1
		Bushing		2
		Cover Plate		1
		Rivet	4x6	2
2	JLP150-2	Spur Gear Assembly		2
		Spur Gear		2
		Pinion Gear		2
3	JLP150-3	Drive Shaft		1
4	JLP150-4	Load Gear		1
5	JLP150-5	Gear Side Plate Assembly		1
		Gear Side Plate		1
		Stay Bolt		3
		Bushing		2
		Race "A"		1
6	JLP150-6	Load Sheave		1
8	JLP150-8	Guide Block		1
9	JLP150-9	Guide Roller		1
10	JLP150-10	Stripper		1
11	JLP150-11	Roller Kit (37 rollers)	3x6	1
12	JLP150-12	Bearing Race		1
13	JLP150-13	Pawl Spring (1-1/2, 3, 6T)		2
14	JLP150-14	Pawl (1-1/2, 3, 6T)		2
15	JLP150-15	Snap Ring (1-1/2, 3, 6T)		2
16	JLP150-16	Lever Side Plate Assembly		1
		Lever Side Plate		1
		Race "B"		1
		Pawl Pin		2
17	JLP150-17	Disc Hub		1
18	JLP75-18	Spring (1/2, 3/4, 1-1/2T)		1
19	JLP150-19	Friction Disc		2
20	JLP150-20	Ratchet Disc		1
21	JLP150-21	Feed Gear		1
22	JLP150-22	Brake Cover Assembly		1
		Brake Cover		1
		Handle Case		1
		Nut		2
		Bushing		1
23	JLP150-23	Change Over Gear (1-1/2, 3, 6T)		1
24	JLP150-24	Lever Handle Assembly (1-1/2, 3, 6T)		1
		Lever Handle		1
		Selector Lever		1
		Change Over Shaft		1
		Cover		1
		Rivet	3x12	1
		Screw		2
		Spring Seat		1
		Bushing		1
		Rubber Grip		1
25	JLP150-25	Change Over Pawl (1-1/2, 3, 6T)		1
26	JLP150-26	Spring Shaft (1-1/2, 3, 6T)		1
27	JLP150-27	Spring (1-1/2, 3, 6T)		1
28	JLP150-28	Hand Wheel (1-1/2, 3, 6T)		1

Index No.	Part No.	Description	Size	Qty.
29	JLP150-29	Name Plate		1
30	JLP150-30	Chain Stop		1
31	JLP150-31	Hex Nut	M10	6
32	JLP150-32	Lock Washer	10	6
32A	JLP150-32A	Flat Washer	10	6
33	JLP150-33	Hex Nut (1-1/2, 3, 6T)	M8	2
34	JLP150-34	Lock Washer (1-1/2, 3, 6T)	8	2
34A	JLP150-34A	Flat Washer (1-1/2, 3, 6T)	8	4
35	JLP150-35	Castle Nut (1-1/2, 3, 6T)	M12	1
36	JLP150-36	Split Pin (1-1/2, 3, 6T)	2.5x25	1
37	JLP75-37	Rivet (1/2-6T)	2.5x6	6
40	JLP150-40	Top Hook Assembly		1
		Top Hook		1
		Safety Latch		1
		Double Spring		1
		Rivet	4x18	1
		Top Hook Block		2
		Rivet	6x24	2
41	JLP150-41	Top Hook Shaft		1
43	JLP150-43	Bottom Hook Assembly		1
		Bottom Hook		1
		Safety Latch		1
		Double Spring		1
		Rivet	4x18	1
		Bottom Hook Block		2
		Rivet	6x24	4
43A	JLP150-43A	Shaft		1
43C	JLP150-43C	Nut	M8	1
43D	JLP150-43D	Pin	2x16	1
50	JLP150-50	Screw (1-1/2, 3, 6T)	M8x16	2
51	JLP150-51	Washer (1-1/2, 3, 6T)	M8	2
58	JLP150-58	Snap Ring	34	1
100	JLP150-100	Safety Latch Kit		1
		Safety Latch		1
		Double Spring		1
		Rivet	4x18	1
	187723	Chain	8mm	1

Note: Top and bottom hooks are sold as an assembly only.

JLP-300 & 600

Index No.	Part No.	Description	Size	Qty.
1	JLP300-1	Gear Case Assembly (3, 6T)		1
		Gear Case		1
		Bushing		2
		Cover		1
		Rivet	4x6	2
2	JLP300-2	Spur Gear Assembly (3, 6T)		2
		Spur Gear		2
		Pinion Gear		2
3	JLP300-3	Drive Shaft (3, 6T)		1
4	JLP300-4	Load Gear (3, 6T)		1
5	JLP300-5	Gear Side Plate Assembly (3, 6T)		1
		Gear Side Plate		1
		Stay Bolt		3
		Bushing		2
		Race "A"		1
6	JLP300-6	Load Sheave (3, 6T)		1
8	JLP800-8	Guide Block (3, 6T)		1
9	JLP300-9	Guide Roller (3, 6T)		1
10	JLP300-10	Stripper (3, 6T)		1
11	JLP300-11	Roller Kit (24 rollers) (3, 6T)	5x6	1
12	JLP300-12	Bearing Race (3, 6T)		1
13	JLP150-13	Pawl Spring (1-1/2, 3, 6T)		2
14	JLP150-14	Pawl (1-1/2, 3, 6T)		2
15	JLP150-15	Snap Ring (1-1/2, 3, 6T)		2
16	JLP300-16	Lever Side Plate Assembly (3, 6T)		1
		Lever Side Plate		1
		Race "B"		1
		Pawl Pin		2
17	JLP300-17	Disc Hub (3, 6T)		1
18	JLP300-18	Spring (3, 6T)		1
19	JLP300-19	Friction Disc (3, 6T)		2
20	JLP300-20	Ratchet Disc (3, 6T)		1
21	JLP300-21	Feed Gear (3, 6T)		1
22	JLP300-22	Brake Cover Assembly (3, 6T)		1
		Brake Cover		1
		Handle Case		1
		Nut		2
		Bushing		1
23	JLP150-23	Change Over Gear (1-1/2, 3, 6T)		1
24	JLP150-24	Lever Handle Assembly (1-1/2, 3, 6T)		1
		Lever Handle		1
		Selector Lever		1
		Change Over Shaft		1
		Cover		1
		Rivet	3x12	1
		Bolt		2
		Spring Seat		1
		Bushing		1
		Rubber Grip		1
25	JLP150-25	Change Over Pawl (1-1/2, 3, 6T)		1
26	JLP150-26	Spring Shaft (1-1/2, 3, 6T)		1
27	JLP150-27	Spring (1-1/2, 3, 6T)		1
28	JLP150-28	Hand Wheel (1-1/2, 3, 6T)		1

Index No.	Part No.	Description	Size	Qty.
29	JLP300-29	Name Plate		1
30	JLP300-30	Chain Stop (3, 6T)		1
31	JLP300-31	Hex Nut (3, 6T)	M12	6
32	JLP300-32	Lock Washer (3, 6T)	M12	6
32A	JPP300-32A	Flat Washer (3, 6T)	M12	6
33	JLP150-33	Hex Nut (1-1/2, 3, 6T)	M8	2
34	JLP150-34	Lock Washer (1-1/2, 3, 6T)	M8	2
34A	JLP150-34A	Flat Washer (1-1/2, 3, 6T)	M8	4
35	JLP150-35	Castle Nut (1-1/2, 3, 6T)	M12	1
36	JLP150-36	Split Pin (1-1/2, 3, 6T)	2.5x25	1
37	JLP75-37	Rivet (1/2-6T)	2.5x6	6
40	JLP300-40	Top Hook Assembly (3T)		1
		Top Hook		1
		Safety Latch		1
		Double Spring		1
		Rivet	4x22	1
		Top Hook Block		2
		Rivet	8x28	2
41	JLP300-41	Top Hook Shaft (3, 6T)		1
43	JLP300-43	Bottom Hook Assembly (3T)		1
		Bottom Hook		1
		Safety Latch		1
		Double Spring		1
		Rivet	4x22	1
		Bottom Hook Block		2
		Rivet	8x28	4
43A	JLP300-43A	Shaft		1
43C	JLP300-43C	Nut	M12	1
43D	JLP300-43D	Pin	2.5x25	1
50	JLP150-50	Screw (1-1/2, 3, 6T)	M8x16	2
51	JLP150-51	Washer (1-1/2, 3, 6T)	M8	2
58	JLP300-58	Snap Ring (3, 6T)	45	1
100	JLP300-100	Safety Latch Kit		1
		Safety Latch		1
		Double Spring		1
		Rivet		1
	187724	Chain	10mm	1

Note: Top and bottom hooks are sold as an assembly only.

Additional Parts for JLP-600 Puller

Index No.	Part No.	Description	Size	Qty.
29	JLP600-29	Name Plate (6T)		1
40	JLP600-40	Top Hook Assembly (6T)		1
		Top Hook		1
		Safety Latch		1
		Double Spring		1
		Rivet	4x22	1
		Top Hook Block "A"		1
		Top Hook Block "B"		1
		Rivet	8x28	3
43	JLP600-43	Bottom Hook Assembly (6T)		1
		Bottom Hook		1
		Bottom Hook Collar		2
		Rivet	8x28	2
		Safety Latch		1
		Double Spring		1
		Rivet	4x22	1
		Bottom Hook Block		1
		Bottom Hook Sheave		1
		Needle Roller		29
		Sheave Axle		2
		Fixed Plate		1
		Screw	M6x10	8
		Lock Washer	M6	8
45	JLP600-45	Chain Suspension Pin (6T)		1
52	JLP600-52	Castle Nut		1
53	JLP600-53	Split Pin		11
100	JLP600-100	Safety Latch Kit (not shown-6T)		1
		Safety Latch		1
		Double Spring		1
		Rivet	4x22	1

Note: Top and bottom hooks are sold as an assembly only.