

Operation MANUAL

120 lb Grease Pump Kit - Heavy Duty

Prod. No. 350307
Mod. No. JAGP-120



WARNING

These pumps can generate very high fluid pressure. Before each use, make sure safety devices are in place and operating properly. Do not alter or modify any part of the equipment, as this may result in fire, explosion, property damage or serious bodily injury, including injecting fluid through the skin or splashing in the eyes. To reduce the risk of serious bodily injury or property damage, never exceed the maximum air or fluid working pressure of the lowest rated system component. NEVER point the control valve at any person or towards skin.

Owner / User Responsibility

The owner and/or user must have a thorough understanding of the manufacturer's operating instructions and warnings before using this piece of equipment. Personnel involved in the use and operation of equipment shall be careful, competent, trained, and qualified in the safe operation of the equipment and its proper use. Warning information should be emphasized and understood. If the operator is not fluent in English, the manufacturer's instructions and warnings shall be read to and discussed with the operator in the operator's native language by the purchaser / owner, making sure that the operator comprehends its contents.

Owner and / or user must study and keep for future reference the manufacturer's instructions. Owner and/or user is responsible for keeping all warning labels and instruction manuals legible and intact.

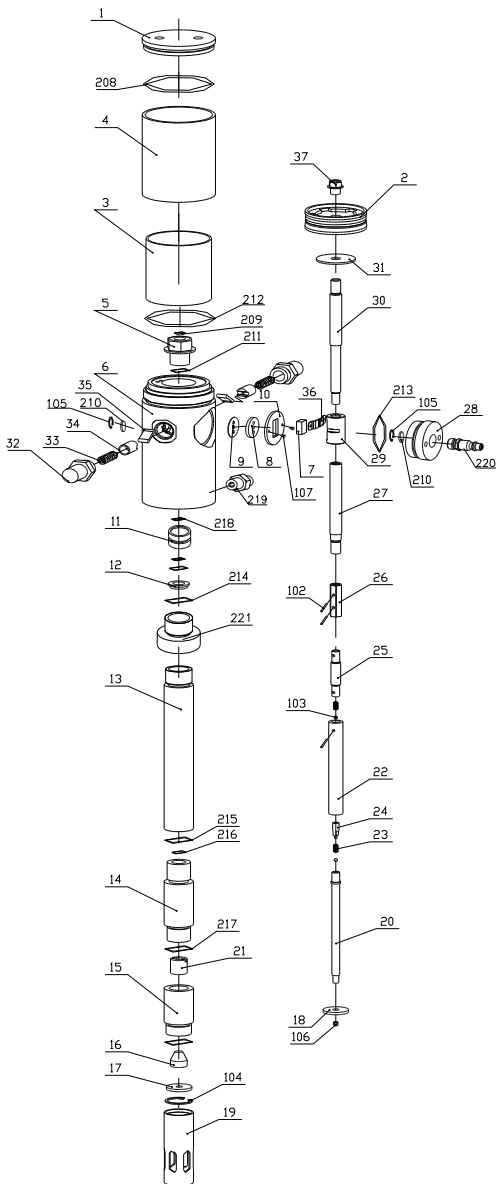
Before Use

- 1) Verify that the product and the application are compatible.
- 2) Before using this product, read the owner's manual completely and familiarize yourself thoroughly with the product and the hazards associated with improper use.
- 3) Assemble cart or dolly.
- 4) Place grease pail on cart or dolly.
- 5) Place follower plate firmly on top of grease to ensure the follower will move with the grease.
- 6) Place drum cover over outer rim of pail and secure with screws provided.
- 7) Insert pump assembly through cart support arm, drum cover and follower plate and secure to cart support arm and drum cover with set screws.
- 8) Attach lubricant hose to pump, connection must be leakproof.
- 9) Attach "Z" swivel (if provided) to lubricant hose and control valve.
- 10) Attach air hose to pump assembly, connection must be leakproof.
- 11) NOTE: It is recommended that a filter / regulator / lubricator be installed in the air supply line to provide a clean, dry air source. It is also highly recommended that a SAFETY SHUT OFF BALL VALVE, be installed in the air supply line, close to the pump assembly in case of emergency.

Operation

- 1) This pump will deliver grease at a ratio of 50:1, for example, 90 PSI air input will result in 4,500 PSI output of grease.
- 2) To begin grease delivery, ensure a secure connection to the grease fitting and squeeze the trigger of the control valve.
- 3) Releasing trigger of control valve will stop flow of grease and shut off pump.
- 4) When pump is not in use, shut off air supply to pump.

| | |
|--|-------------------|
| Compression Ratio | 50:1 |
| Air Operating Pressure (bar - PSI) | 5-8 / 70-115 |
| Maximum Air Inlet Pressure (bar - PSI) | 8 / 115 |
| Air Consumption (cfm) | 4.3 cfm @ 115 PSI |
| Capacity (l/min - gallon/min) | 18 / 5 |
| Tube Diameter (mm - inch) | 30 / 1.18 |
| Suction Tube Length (mm - inch) | 740 / 29 |
| Suitable for Drum Size (kgs - lbs) | 50-60 / 110-132 |
| Air Inlet Connection | 1/4" |
| Oil Delivery Connection | 1/4" |
| Noise Level (dB) | 82 |



50:1 Air Operated Grease Pump

| No. | Description | No. | Description |
|-----|---------------------------|------|------------------------|
| 1 | Air Motor Cover | 31 | Washer |
| 2 | Piston | 32 | Spring Shell |
| 3 | Air Motor Shell (inside) | 33 | Spring |
| 4 | Air Motor Shell (outside) | 34 | Spring Seat |
| 5 | Bracket | 35 | Trip Shoe Guide |
| 6 | Air Control Center | 36 | Slider Bracket |
| 7 | Slider | 37 | Nut |
| 8 | Gasket | 102 | Pin |
| 9 | Soft Gasket | 103 | Ball |
| 10 | Securing Washer | 104 | Circlip |
| 11 | Bracket | 105 | Small Circlip |
| 12 | Washer | 106 | Nut |
| 13 | Connecting Tube | 107 | Screw |
| 14 | Piston Shell | 208 | O-Ring |
| 15 | Valve Seat | 209 | O-Ring |
| 16 | Taper Washer | 210 | Silencer |
| 17 | Filter | 211 | O-Ring |
| 18 | Shovel Washer | 212 | O-Ring |
| 19 | Suction Tube | 213 | O-Ring |
| 20 | Shovel Rod | 214 | O-Ring |
| 21 | Valve | 215 | O-Ring |
| 22 | Piston | 216 | O-Ring |
| 23 | Spring | 217 | O-Ring |
| 24 | Spring Seat | 218 | O-Ring |
| 25 | Connecting Shaft | 219 | Outlet |
| 26 | Connecting Shell | 220 | Air Fitting |
| 27 | Middle Shaft | PRK | Repair Kit |
| 28 | Air Centre Cover | P07K | (7, 8, 9, 10, 36) |
| 29 | Slider Shell | P17K | (1 x 17, 18, 104, 106) |
| 30 | Piston Shaft | P32K | (2 x 32, 33, 34, 35) |

When ordering parts, specify model number and part required

