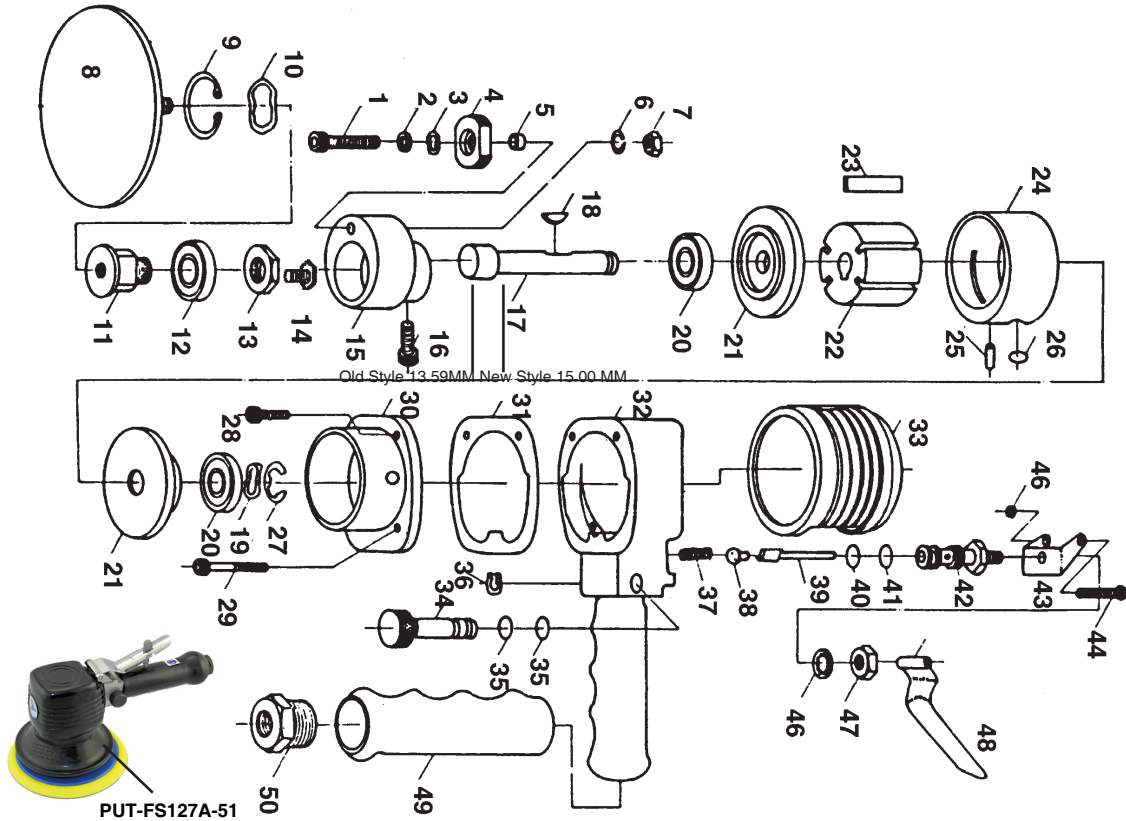


FS127A 6" ORBITAL SANDER PRODUCT # 403203



| REF | PART NUMBER | DESCRIPTION | REQ | REF | PART NUMBER | DESCRIPTION | REQ |
|-----|---------------|----------------------------|-----|-----|-------------|---------------------------------|-----|
| 1 | PUT-101101 | FS127A SCREW | 1 | 28 | PUT-101128 | FS127A CAP SCREW (S) | 2 |
| 2 | PUT-119102 | FS127A WASHER | 1 | 29 | PUT-101129 | FS127A CAP SCREW (L) | 2 |
| 3 | PUT-101103 | FS127A WASHER WAVE | 1 | 30 | PUT-101130 | FS127A MOTOR COVER | 1 |
| 4 | PUT-101104 | FS127A SPINDLE LOCK | 1 | 30A | PUT-201130 | FS127A MOTOR COVER NEW STYLE | 1 |
| 5 | PUT-101105 | FS127A SPACER | 1 | 31 | PUT-101131 | FS127A GASKET | 1 |
| 6 | PUT-101106 | FS127A WASHER WAVE | 1 | 32 | PUT-101132 | FS127A MOTOR HOUSING | 1 |
| 7 | PUT-101107 | FS127A HEX NUT | 1 | 32A | PUT-201132 | FS127A MOTOR HOUSING NEW STYLE | 1 |
| 8 | 905313 | FS127A 5" SANDING PAD | 1 | 33 | PUT-101133 | FS127A HOUSING COVER | 1 |
| 8-1 | 905310 | FS127A 6" SANDING PAD | 1 | 34 | PUT-101134 | FS127A AIR REGULATOR | 1 |
| 9 | PUT-000R344 | FS127A RETAINING RING | 1 | 34A | PUT-201134 | FS127A AIR REGULATOR NEW STYLE | 1 |
| 10 | PUT-101008 | FS127A WASHER WAVE | 1 | 35 | PUT-0440180 | FS127A O-RING | 3 |
| 11 | PUT-101111 | FS127A DRIVE SPINDLE | 1 | 36 | PUT-000S074 | FS127A RETAINING RING | 1 |
| 12 | PB6201-2Z | FS127A BALL BRG | 1 | 37 | PUT-101137 | FS127A THROTTLE VALVE SPRING | 1 |
| 13 | PUT-101014 | FS127A WASHER WAVE | 1 | 37A | PUT-201137 | FS127A THRLE VAL SPRG NEW STYLE | 1 |
| 14 | PUT-101015 | FS127A FRONT SCREW | 1 | 38 | PUT-101138 | FS127A O-RING | 1 |
| 15 | PUT-101115 | FS127A ORBITAL HUB | 1 | 38A | PUT-201139 | FS127A VALVE BALL WITH 39A | 1 |
| 16 | PUT-101116 | FS127A SOCKET SCREW | 1 | 39 | PUT-101139 | FS127A VALVE STEM | 1 |
| 16P | PUT-101003 | FS127A SPRING WASHER | 1 | 39A | PUT-201139 | FS127A VALVE COMES WITH 38A | 1 |
| 17 | PUT-101117 | FS127A ROTOR SHAFT | 1 | 40 | PUT-101140 | FS127A O-RING | 1 |
| 17A | PUT-201117 | FS127A ROT SHAFT NEW STYLE | 1 | 41 | PUT-101141 | FS127A O-RING | 1 |
| 18 | PUT-101118 | FS127A KEY | 1 | 42 | PUT-101142 | FS127A VALVE BUSHING | 1 |
| 19 | PUT-101119 | FS127A WASHER WAVE | 1 | 42A | PUT-201142 | FS127A VALVE BUSHING NEW STYLE | 1 |
| 20 | PB6200-2Z | FS127A BALL BRG | 2 | 43 | PUT-101143 | FS127A BRACKET | 1 |
| 21 | PUT-101121 | FS127A END PLATE OLD STYLE | 2 | 43A | PUT-201143 | FS127A CARRIER | 1 |
| 21A | PUT-201121A | FS127A END PLATE NEW STYLE | 1 | 44 | PUT-101144 | FS127A HINGE SCREW | 1 |
| 22 | PUT-101122 | FS127A ROTOR | 1 | 45 | PUT-101145 | FS127A HEX NUT | 1 |
| 22A | PUT-201122 | FS127A ROTOR NEW STYLE | 1 | 46 | PUT-101146 | FS127A LOCK WASHER | 1 |
| 23 | PUT-101123 | FS127A VANE | 5 | 47 | PUT-101147 | FS127A HEX NUT | 1 |
| 23A | PUT-101226 | FS127A VANE NEW STYLE | 5 | 48 | PUT-101148 | FS127A THROTTLE LEVER | 1 |
| 24 | PUT-101124 | FS127A CYLINDER | 1 | 48P | PUT-0025200 | FS127A LEVER PIN | 1 |
| 25 | PUT-0030060 | FS127A LOCATING PIN | 1 | 49 | PUT-101149 | FS127A HANDLING COVER | 1 |
| 26 | PUT-0700200 | FS127A O-RING | 1 | 49A | PUT-201149 | FS127A HANDLING COVER | 1 |
| 27 | PUT-000S100 | FS127A RETAINING RING | 1 | 50 | PUT-101150 | FS127A INLET BUSHING | 1 |
| xx | PUT-FS127A-51 | FS127A SAFETY SHROUD | | | | | |

FOR MAXIMUM PERFORMANCE WE RECOMMEND 90 PSI . OIL TOOL DAILY