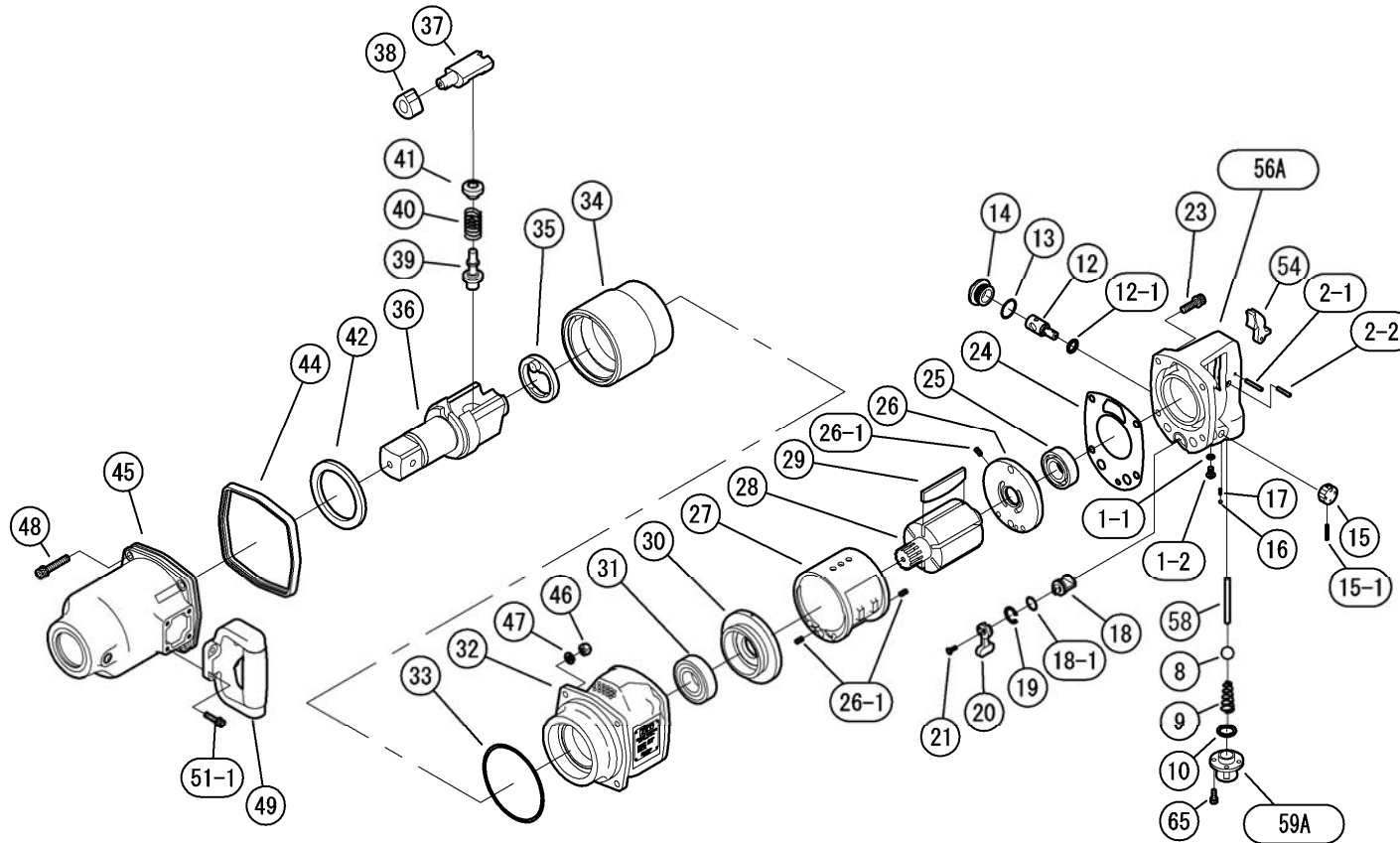




Parts List for the JET-5000 1-1/2" Square Drive Impact Wrench



JET
427 New Sanford Road
LaVergne, Tennessee 37086
Ph.: 800-274-6848
www.jettools.com

Part No. M-505955
Revision H 07/2015
Copyright © 2015 JET, a Division of JPW Industries, Inc.

Parts List for the JET-5000 1-1/2" Square Drive Impact Wrench

Index No	Part No	Description	Size	Qty
1-1	Z040P6	O-Ring	JIS P-6, ID 5.8mm	1
1-2	Z0846X8	Screw	M6x8	1
2-1	Z0614X28	Pin	4x28mm	1
2-2	Z0614X22	Pin	4x22mm	1
8	Z011518D	Throttle Valve		1
9	0132190	Throttle Valve Spring		1
10	Z040P20	O-Ring		1
12	0446017	Regulator Valve		1
12-1	Z040P14	O-Ring	JIS P14, ID 13.8mm	1
13	Z041S26	O-Ring	JIS S-26, ID 25.5mm	1
14	04460391	Plug		1
15	0442314	Regulator Knob		1
15-1	Z0563X22	Pin	3x22mm	1
16	SB-4MM	Steel Ball	4mm	1
17	0114193	Knock Spring		1
18	0142015B	Reverse Valve		1
18-1	Z041S18	O-Ring	JIS S-18, ID 17.5mm	1
19	Z03121	Retainer	RTW-21	1
20	0132915	Reverse Lever		1
21	Z0674X12	Screw	M4x12	1
23	Z0668X25A	Bolt	M8x25	4
24	0142006B	Motor Housing Gasket		1
25	BB-6205	Rear Bearing		1
26	0132124	Rear End Plate		1
26-1	Z0565X10	Spring Pin	5x10mm	3
27	0140509	Cylinder		1
28	0550021A	Rotor		1

Index No	Part No	Description	Size	Qty
29	0550022A	Rotor Vane		6
30	0550023	Front End Plate		1
31	BB-6206Z	Ball Bearing	6206Z	1
32	0550181C11	Motor Case CP		1
33	Z041S110	O-Ring	JIS S-110, ID 109.5	1
34	0550026	Hammer Wheel		1
35	0550050A	Retainer		1
36	0550030A	1/2" Square Drive Anvil		1
37	0550028	Anvil Piece		1
38	0550027	Cam		1
39	0550052B	Plunger B		1
40	0550053	Spring		1
41	0550051B	Plunger A		1
42	0550029	Bushing		1
44	0142071	Rear Rubber Protector		1
45	0550182	Impact Housing CP		1
46	Z0918	Lock Nut	M8	4
47	Z0968X1	Washer	M8	4
48	Z0668X45A	Bolt	M8x45	4
49	0442387	Dead Handle CP		1
51-1	Z0666X20A	Bolt	M6x20	4
54	0345417	Throttle Lever		1
56A	05501800DI02	Handle CP (NPT)		1
58	0132911I	Throttle Valve Pin		1
59A	0445011N	Inlet Bushing (NPT)		1
65	Z0665X14A	Bolt	M5x14	4

To order parts or reach our service department, call 1-800-274-6848 Monday through Friday (see our website for business hours, www.jettools.com). Having the Model Number and Serial Number of your tool available when you call will allow us to serve you quickly and accurately.