



# NEW PRODUCT SUPPLEMENT AUTUMN 2019

FEATURING:

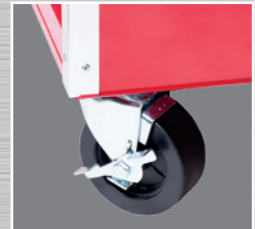




# PRO SERIES TOOL STORAGE



- **The Best Value for Tool Storage in Canada!**
- Double wall steel construction with reinforced bottom channels on both cabinets and chests
- 100 lb capacity ball bearing slides on all drawers
- Select drawers with 2 sets of slides to accommodate heavier loads
- Centre slide on full width drawer supports heavier loads (56" and 72" only)
- Power supply management includes 4 AC and 2 USB outlets on roller cabinets
- Extruded aluminum drawer pulls ensure positive grip when opening heavily loaded drawers
- Riveted aluminum mouldings protect box corners from impact
- Heavy duty casters with pedal brake
- Roller cabinets include wood tops from a renewable resource
- Gas struts on top chests
- Gas struts on top chests
- Drawer mats included



## Pro Series Roller Cabinet - 15 Drawers - 72" x 24"

842531 | PRC7215



49" W x 4.2" H	16" W x 3.7" H	16" W x 2.1" H
30.5" W x 2.1" H	16" W x 2.1" H	16" W x 2.1" H
30.5" W x 2.9" H	16" W x 2.9" H	16" W x 2.9" H
30.5" W x 3.7" H	16" W x 3.7" H	16" W x 3.7" H
30.5" W x 9.8" H	16" W x 9.8" H	16" W x 9.8" H

Drawer Depth: 21"

PROD. NO.	MOD. NO.	WIDTH	HEIGHT	LOAD RATING	STORAGE CAPACITY	WHEELS
842531	PRC7215	72"	39.4"	3,000 lb	30,842.8 cm <sup>3</sup>	6" x 2", 4 swivel, 2 fixed



**Pro Series Mechanic's Chest - 6 Drawers - 56" x 24"**

842574 | PMC5606

TILL: 55" W x 23.5" D x 2.75" H	
31.9" W x 1.7" H	15.7" W x 3.9" H
31.9" W x 1.7" H	
31.9" W x 4.2" H	15.7" W x 8.9" H
31.9" W x 4.2" H	

Drawer Depth: 21.9"



**Pro Series Roller Cabinet - 10 Drawers - 56" x 24"**

842524 | PRC5610

51.4" W x 3.2" H	
34.2" W x 2.7" H	15.1" W x 2.7" H
34.2" W x 2.7" H	
34.2" W x 4.2" H	15.1" W x 2.7" H
34.2" W x 4.2" H	
34.2" W x 4.2" H	15.1" W x 11.9" H
34.2" W x 5.8" H	

Drawer Depth: 21"



PROD. NO.	MOD. NO.	WIDTH	HEIGHT	LOAD RATING	STORAGE CAPACITY	WHEELS
842574	PMC5606	55.5"	19.2"	600 lb	12,644.6 cm <sup>3</sup>	NA
842524	PRC5610	55.9"	39.7"	1,800 lb	23,872.8 cm <sup>3</sup>	5" x 2", 4 swivel, 2 fixed

**Pro Series Mechanic's Chest - 10 Drawers - 42" x 18"**

842564 | PMC4210

TILL: 40" W x 17.5" D x 2.5" H	
22.8" W x 1.8" H	12.2" W x 1.8" H
22.8" W x 1.8" H	
22.8" W x 1.8" H	
22.8" W x 3.2" H	12.2" W x 3.2" H
22.8" W x 3.2" H	

Drawer Depth: 16"



**Pro Series Roller Cabinet - 11 Drawers - 42" x 18"**

842514 | PRC4211

36.6" W x 4.2" H	
22.1" W x 2.7" H	12.2" W x 2.7" H
22.1" W x 2.7" H	
22.1" W x 2.7" H	12.2" W x 5.8" H
22.1" W x 2.7" H	
22.1" W x 2.7" H	12.2" W x 8.9" H
22.1" W x 5.8" H	

Drawer Depth: 15.1"



PROD. NO.	MOD. NO.	WIDTH	HEIGHT	LOAD RATING	STORAGE CAPACITY	WHEELS
842564	PMC4210	40.3"	19.2"	1,000 lb	6,608 cm <sup>3</sup>	NA
842514	PRC4211	41.06"	39.37"	1,300 lb	12,464.6 cm <sup>3</sup>	5" x 2", 2 swivel, 2 fixed





# RATCHETING WRENCHES

JET is proud to introduce new sets, expanded sizes, and new styles of our top of the class 72 Tooth Ratcheting Combination Wrenches! JET Ratcheting Wrenches are among the World's strongest ratchet wrenches, with up to **70% more torque** than ANSI requirements, and feature our patented Torque-Drive non-slip open ends for safe, secure use on most fasteners.

- 12 point box ends for superior grip
- 72 tooth ratchet mechanism exceeds the ANSI torque ratings for a fixed wrench by more than 30%
- Superior grade 6140 Chrome Vanadium steel
- Flat style allows maximum access to confined areas – just flip wrench over to reverse
- Fully polished surface resists corrosion
- Complete with terylene pouch

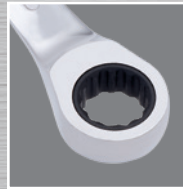
## Ratcheting Stubby Wrench Set - SAE - 8 pc

700301 | SRCWS-8S



- Extra short pattern style allows access to confined areas

PROD. NO.	MOD. NO.	SIZES (INCHES)
700301	SRCWS-8S	5/16, 3/8, 7/16, 1/2, 9/16, 5/8, 11/16, 3/4



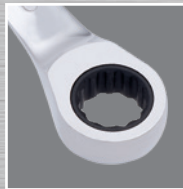
## Ratcheting Stubby Wrench Set - Metric - 10 pc

700302 | SRCWS-10M



- Extra short pattern style allows access to confined areas

PROD. NO.	MOD. NO.	SIZES (mm)
700302	SRCWS-10M	10, 11, 12, 13, 14, 15, 16, 17, 18, 19



## Ratcheting Double Box Wrench Set - SAE - 4 pc

700346 | RDBS-4S



PROD. NO.	MOD. NO.	SIZES (INCHES)
700346	RDBS-4S	5/16x3/8, 7/16x1/2, 9/16x5/8, 11/16x3/4



- Two sizes on every wrench for maximum versatility with minimum weight

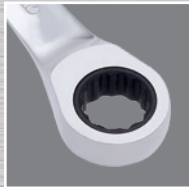


### Ratcheting Double Box Wrench Set - Metric - 6 pc

700396 | RDBS-6M

- Two sizes on every wrench for maximum versatility with minimum weight

PROD. NO.	MOD. NO.	SIZES (mm)
700396	RDBS-6M	8x9, 10x11, 12x13, 14x15, 16x18, 17x19

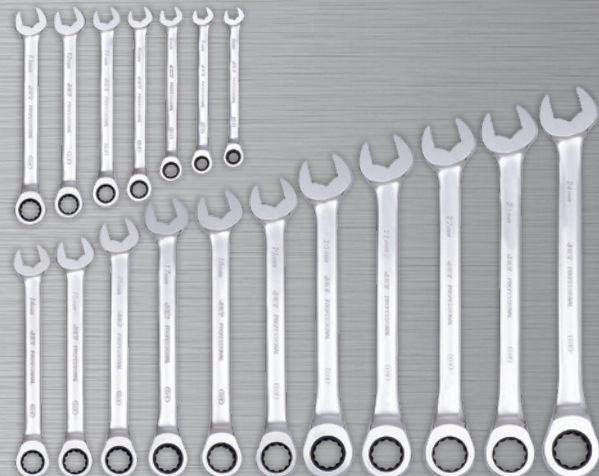
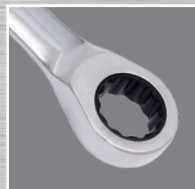


### Ratcheting Wrench Set - Metric - 18 pc

700362 | RCWS-18M

- Exclusive TORQUE DRIVE® non-slip open ends

PROD. NO.	MOD. NO.	SIZES (mm)
700362	RCWS-18M	7, 8, 9, 10, 11, 12, 13, 14, 15, 16, 17, 18, 19, 20, 21, 22, 23, 24



### Reversible Ratcheting Wrench Set - Metric - 18 pc

700373 | RCWS-18MR

- Same great features as flat style, but with reversing lever
- Allows 15° offset for clearance
- Exclusive TORQUE DRIVE® non-slip open ends

PROD. NO.	MOD. NO.	SIZES (mm)
700373	RCWS-18MR	7, 8, 9, 10, 11, 12, 13, 14, 15, 16, 17, 18, 19, 20, 21, 22, 23, 24







## LONG PATTERN WRENCH SET



### Long Pattern Wrench Set - SAE - 16 pc



- Exclusive TORQUE DRIVE® non-slip open ends
- Super strong SAE 6140 Chrome Vanadium steel for strength and durability
- 15° offset – optimal for most applications
- Fully polished mirror finish
- Extra slim design allows access to the most confined spaces
- All wrenches meet ANSI specifications

PROD. NO.	MOD. NO.	SIZES (INCHES)
700135	LCWS-16S	1/4, 5/16, 3/8, 7/16, 1/2, 9/16, 5/8, 11/16, 3/4, 13/16, 7/8, 15/16, 1, 1-1/16, 1-1/8, 1-1/4

## STUBBY WRENCH SETS

- Extra short pattern style allows you to access confined areas
- Fully polished for clean professional look and feel
- 15° offset – optimal for most applications
- Heavy duty drop forged SAE 6140 Chrome Vanadium steel made for professional
- Meets ANSI standards

### Stubby Wrench Set - SAE - 10 pc



PROD. NO.	MOD. NO.	SIZES (INCHES)
700142	SCWS-10S	3/8, 7/16, 1/2, 9/16, 5/8, 11/16, 3/4, 13/16, 7/8, 15/16

### Stubby Wrench Set - Metric - 10 pc



PROD. NO.	MOD. NO.	SIZES (mm)
700192	SCWS-10M	10, 11, 12, 13, 14, 15, 16, 17, 18, 19

## FLARE NUT WRENCH SETS

- Slot opening easily slides over tubing or hose to reach hex nuts at ends
- 6 point design allows for maximum contact on fastener for evenly distributed torque
- Reduces fastener damage

### Flare Nut Wrench Set - SAE - 4 pc



PROD. NO.	MOD. NO.	SIZES (INCHES)
719005	FN-4S	1/4 x 5/16, 3/8 x 7/16, 1/2 x 9/16, 3/4 x 7/8

### Flare Nut Wrench Set - Metric - 6 pc



PROD. NO.	MOD. NO.	SIZES (mm)
719010	FN-6M	9 x 11, 10 x 12, 13 x 14, 15 x 17, 16 x 18, 19 x 21



# FLARE NUT CROWFOOT SETS - 6 PT



- 6 point style distributes force over a greater area, protecting softer brass and aluminum fittings and providing greater user protection against slippage
- Open slot allows wrench to slip over hoses and lines to reach fasteners
- Chrome vanadium steel for professional use
- Excellent for use on hydraulic, brake, air conditioning, and fuel lines
- Drive with any 3/8" ratchet, extension, or other drive tool
- Includes socket rail for organization

## Flare Nut Crowfoot Wrench Set - SAE - 7 pc



PROD. NO.	MOD. NO.	SIZES (INCHES)
719112	CFW3807-6	3/8, 7/16, 1/2, 9/16, 5/8, 11/16, 3/4

## Flare Nut Crowfoot Wrench Set - Metric - 10 pc



PROD. NO.	MOD. NO.	SIZES (mm)
719122	CFW3810-6M	10, 11, 12, 13, 14, 15, 16, 17, 18, 19

# FLARE NUT CROWFOOT SETS - 12 PT



- 12 point style provides double the index points, providing easier turning of fasteners in restricted spaces
- Can be used on 4 point, 6 point, and 12 point fasteners
- Open slot allows wrench to slip over hoses and lines to reach fasteners
- Chrome vanadium steel for professional use
- Excellent for use on hydraulic, brake, air conditioning, and fuel lines
- Drive with any 1/2" ratchet, extension, or other drive tool
- Includes socket rail for organization

## Flare Nut Crowfoot Wrench Set - SAE - 7 pc



PROD. NO.	MOD. NO.	SIZES (INCHES)
719113	CFW1207-12	13/16, 7/8, 15/16, 1, 1-1/16, 1-1/8, 1-1/4

## Flare Nut Crowfoot Wrench Set - Metric - 10 pc



PROD. NO.	MOD. NO.	SIZES (mm)
719123	CFW1210-12M	20, 21, 22, 23, 24, 25, 26, 27, 30, 32

**\* New Open Stock Wrenches available. See next page...**





# OPEN STOCK WRENCHES



## Ratcheting Stubby Combination Wrenches - 12 pt

- 12 point box ends for superior grip
- 72 tooth ratchet mechanism exceeds the ANSI torque ratings for a fixed wrench by more than 30%
- Superior grade 6140 Chrome Vanadium steel
- Flat style allows maximum access to confined areas – just flip wrench over to reverse
- Fully polished surface resists corrosion



PROD. NO.	SIZE	PROD. NO.	SIZE
701402	5/16"	701455	10 mm
701403	3/8"	701456	11 mm
701404	7/16"	701457	12 mm
701405	1/2"	701458	13 mm
701406	9/16"	701459	14 mm
701407	5/8"	701460	15 mm
701408	11/16"	701461	16 mm
701409	3/4"	701462	17 mm
		701463	18 mm
		701464	19 mm

## Ratcheting Double Box Wrenches - 12 pt

- 12 point box ends for superior grip
- 72 tooth ratchet mechanism exceeds the ANSI torque ratings for a fixed wrench by more than 30%
- Superior grade 6140 Chrome Vanadium steel
- Flat style allows maximum access to confined areas – just flip wrench over to reverse
- Fully polished surface resists corrosion



PROD. NO.	SIZE	PROD. NO.	SIZE
701502	5/16" x 3/8"	701553	8 mm x 9 mm
701503	7/16" x 1/2"	701555	10 mm x 11 mm
701504	9/16" x 5/8"	701557	12 mm x 13 mm
701505	11/16" x 3/4"	701559	14 mm x 15 mm
		701561	16 mm x 18 mm
		701562	17 mm x 19 mm

## Ratcheting Combination Wrenches - 12 pt

- Exclusive TORQUE DRIVE® non-slipping open ends & 12 point box ends for superior grip
- 72 tooth ratchet mechanism exceeds the ANSI torque ratings for a fixed wrench by more than 30%
- Superior grade 6140 Chrome Vanadium steel
- Flat style allows maximum access to confined areas – just flip wrench over to reverse
- Fully polished surface resists corrosion



PROD. NO.	SIZE	PROD. NO.	SIZE
701114	1-1/16"	701152	7 mm
701115	1-1/8"	701165	20 mm
701116	1-1/4"	701166	21 mm
701117	1-5/16"	701167	22 mm
701118	1-3/8"	701168	23 mm
701119	1-7/16"	701169	24 mm
701120	1-1/2"	701271	26 mm
701221	1-5/8"	701272	27 mm
701222	1-3/4"	701275	30 mm
701223	1-13/16"	701277	32 mm
701224	1-7/8"	701279	34 mm
701226	2"	701281	36 mm
		701283	38 mm
		701286	41 mm
		701291	46 mm
		701295	50 mm

## Reversible Ratcheting Combination Wrenches - 12 pt

- Same great features as flat style, but with reversing lever
- Allows 15° offset for clearance
- Low profile lever does not add height to the box end, maintaining clearance
- Rated at 1.2 x ANSI torque values



PROD. NO.	SIZE	PROD. NO.	SIZE
701134	1-1/16"	701172	7 mm
701135	1-1/8"	701185	20 mm
701136	1-1/4"	701186	21 mm
		701187	22 mm
		701188	23 mm
		701189	24 mm
		701371	26 mm
		701372	27 mm
		701375	30 mm
		701377	32 mm

## Flex Head Ratcheting Wrenches

PROD. NO.	SIZE	PROD. NO.	SIZE
701312	15/16"	701352	7 mm
701313	1"	701361	16 mm
		701365	20 mm
		701366	21 mm
		701367	22 mm
		701368	23 mm
		701369	24 mm

- Flex head design allows up to 180° flex for increased access to confined fasteners
- Light tension holds position while allowing easy adjustment of angle



### Long Pattern Combination Wrenches - 12 pt

- Exclusive TORQUE DRIVE® non-slip open ends
- Super strong SAE 6140 Chrome Vanadium steel for strength and durability
- 15° offset – optimal for most applications
- Fully polished mirror finish
- Extra slim design allows access to the most confined spaces
- All wrenches meet ANSI specifications



PROD. NO.	SIZE	PROD. NO.	SIZE
700638	1-5/16"	700691	26 mm
700639	1-3/8"	700692	27 mm
700640	1-7/16"	700695	30 mm
700641	1-1/2"	700697	32 mm

### Stubby Combination Wrenches - 12 pt

- Extra short pattern style allows you to access confined areas
- Fully polished for clean professional look and feel
- 15° offset – optimal for most applications
- Heavy duty drop forged SAE 6140 Chrome Vanadium steel made for professional
- Meet ANSI standards



PROD. NO.	SIZE	PROD. NO.	SIZE
700710	13/16"	700756	11 mm
700711	7/8"	700759	14 mm
700712	15/16"	700761	16 mm

### Flare Nut Wrenches - 6 pt

- Slot opening easily slides over tubing or hose to each hex nuts at ends
- 6 point design allows for maximum contact on fastener for every distributed torque
- Reduces fastener damage

PROD. NO.	SIZE	PROD. NO.	SIZE
719201	1/4" x 5/16"	719252	9 mm x 11 mm
719202	3/8" x 7/16"	719253	10 mm x 12 mm
719203	1/2" x 9/16"	719254	13 mm x 14 mm
719204	3/4" x 7/8"	719255	15 mm x 17 mm
		719256	16 mm x 18 mm
		719257	19 mm x 21 mm



### Flare Nut Crowfoot Wrenches - 6 pt

- 6 point style distributes force over a greater area, protecting softer brass and aluminum fittings and providing greater user protection against slippage
- Open slot allows wrench to slip over hoses and lines to reach fasteners
- Chrome Vanadium steel for professional use
- Excellent for use on hydraulic, brake, air conditioning, and fuel lines
- Drive with any 3/8" ratchet, extension, or other drive tool

PROD. NO.	SIZE	PROD. NO.	SIZE
719303	3/8" X 3/8"	719321	3/8" X 10 mm
719304	3/8" X 7/16"	719322	3/8" X 11 mm
719305	3/8" X 1/2"	719323	3/8" X 12 mm
719306	3/8" X 9/16"	719324	3/8" X 13 mm
719307	3/8" X 5/8"	719325	3/8" X 14 mm
719308	3/8" X 11/16"	719326	3/8" X 15 mm
719309	3/8" X 3/4"	719327	3/8" X 16 mm
		719328	3/8" X 17 mm
		719329	3/8" X 18 mm
		719330	3/8" X 19 mm



### Flare Nut Crowfoot Wrenches - 12 pt

- 12 point style provides double the index points, providing easier turning of fasteners in restricted spaces
- Can be used on 4 point, 6 point, and 12 point fasteners
- Open slot allows wrench to slip over hoses and lines to reach fasteners
- Chrome vanadium steel for professional use
- Excellent for use on hydraulic, brake, air conditioning, and fuel lines
- Drive with any 1/2" ratchet, extension, or other drive tool
- Includes socket rail for organization

PROD. NO.	SIZE	PROD. NO.	SIZE
719351	1/2" X 13/16"	719371	1/2" X 20 mm
719352	1/2" X 7/8"	719372	1/2" X 21 mm
719353	1/2" X 15/16"	719373	1/2" X 22 mm
719354	1/2" X 1"	719374	1/2" X 23 mm
719355	1/2" X 1-1/16"	719375	1/2" X 24 mm
719356	1/2" X 1-1/8"	719376	1/2" X 25 mm
719357	1/2" X 1-1/4"	719377	1/2" X 26 mm
		719378	1/2" X 27 mm
		719379	1/2" X 30 mm
		719380	1/2" X 32 mm



\* Please see SureWerx catalogue or website for our complete range of open stock wrenches





# SNAP RING PLIERS



- Super Heavy Duty pliers for the toughest automotive and industrial applications
- Specially hardened SUJ2 bearing steel tips are angled to safely retain circlips while compressing or expanding
- Up to 10 times the life of turned tips
- Patented hidden spring mechanism returns pliers to neutral position, reducing hand fatigue
- Screw joint is adjustable for zero-backlash
- Textured handles provide safe non-slip grip



## Pliers - Snap Ring - Super Heavy Duty - 5-1/2"



PROD. NO.	MOD. NO.	TYPE	TIP SIZE	CAPACITY
730751	SRP-547IS	Internal Straight	.047" (1.3 mm)	3/8" – 1" (10 – 25 mm)
730752	SRP-547IB	Internal Bent	.047" (1.3 mm)	3/8" – 1" (10 – 25 mm)
730753	SRP-547ES	External Straight	.047" (1.3 mm)	3/8" – 1" (10 – 25 mm)
730754	SRP-547EB	External Bent	.047" (1.3 mm)	3/8" – 1" (10 – 25 mm)

## Pliers - Snap Ring - Super Heavy Duty - 7"



PROD. NO.	MOD. NO.	TYPE	TIP SIZE	CAPACITY
730756	SRP-770IS	Internal Straight	.070" (1.8 mm)	3/4" – 2-1/4" (19 – 60 mm)
730757	SRP-770IB	Internal Bent	.070" (1.8 mm)	3/4" – 2-1/4" (19 – 60 mm)
730758	SRP-770ES	External Straight	.070" (1.8 mm)	3/4" – 2-1/4" (19 – 60 mm)
730759	SRP-770EB	External Bent	.070" (1.8 mm)	3/4" – 2-1/4" (19 – 60 mm)

## Pliers - Snap Ring - Super Heavy Duty - 9"



PROD. NO.	MOD. NO.	TYPE	TIP SIZE	CAPACITY
730761	SRP-990IS	Internal Straight	.090" (2.3 mm)	1-1/2" – 4" (40 – 100 mm)
730762	SRP-990IB	Internal Bent	.090" (2.3 mm)	1-1/2" – 4" (40 – 100 mm)
730763	SRP-990ES	External Straight	.090" (2.3 mm)	1-1/2" – 4" (40 – 100 mm)
730764	SRP-990EB	External Bent	.090" (2.3 mm)	1-1/2" – 4" (40 – 100 mm)



**Pliers - Snap Ring - Super Heavy Duty - Set - 7"**

730354 | SRP-770S

- Super Heavy Duty pliers for the toughest automotive and industrial applications
- Specially hardened SUJ2 bearing steel tips are angled to safely retain circlips while compressing or expanding
- Up to 10 times the life of turned tips
- Patented hidden spring mechanism returns pliers to neutral position, reducing hand fatigue
- Screw joint is adjustable for zero-backlash
- Textured handles provide safe non-slip grip
- Set contains: Internal Straight, Internal Bent, External Straight, External Bent



**Pliers - Snap Ring - Ratcheting - Super Heavy Duty - Set - 10-1/2"**

730355 | SRP-10S

- Super heavy duty pliers for use on large, high tension retaining rings
- Spring loaded ratcheting mechanism reduces operator fatigue and enhances safety
- Rings can be compressed or expanded in stages and locked in place
- Heat treated high carbon steel pliers with Chrome Molybdenum tips
- Complete with 0°, 15°, 45°, and 90° tips in .108" and .120" sizes
- Replacement tips available
- Capacity: External 1-1/2" – 3-3/4", Internal 2-7/16" – 4"
- Also sold separately





OUR FAMILY OF TOOL, EQUIPMENT & SAFETY BRANDS



[surewerx.com](http://surewerx.com)