



INCH BALL LOCK® COMPATIBILITY CHART - STEEL

Shank Diameter (mm)	Shank Part Number	Fixture Plate Thickness +/- 0.005	Primary Liner Part Number	Secondary Liner Part Number	Face Mount Receiver Part Number	Back Mount Receiver Part Number
13	49605	0.50	49705	49805	49506	49516
	49606	0.75	49706	49806		
16	49607	0.50	49707	49807	49507	49517
	49608	0.75	49708	49808		
20	49601	0.75	49701	49801	49501	49511
	49602	1.00	49702	49802		
25	49611	0.75	49711	49811	49502	49512
	49612	1.00	49712	49812		
30	49621	0.75	49721	49821	49503	49513
	49622	1.00	49722	49822		
35	49631	0.75	49731	49831	49504	49514
	49632	1.00	49732	49832		
	49633	1.50	49733	49833		
	49634	2.00	49734	49834		
50	49641	0.75	49741	49841	49505	49515
	49642	1.00	49742	49842		
	49643	1.50	49743	49843		
	49644	2.00	49744	49844		

INCH BALL LOCK® COMPATIBILITY CHART - STAINLESS STEEL

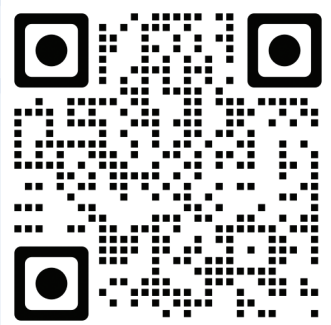
Shank Diameter (mm)	Shank Part Number	Fixture Plate Thickness +/- 0.005	Primary Liner Part Number	Secondary Liner Part Number	Face Mount Receiver Part Number	Back Mount Receiver Part Number
13	49605SS	0.50	49705SS	49805SS	49506	49516
	49606SS	0.75	49706SS	49806SS		
16	49607SS	0.50	49707SS	49807SS	49507	49517
	49608SS	0.75	49708SS	49808SS		
20	49601SS	0.75	49701SS	49801SS	49501	49511
	49602SS	1.00	49702SS	49802SS		
25	49611SS	0.75	49711SS	49811SS	49502	49512
	49612SS	1.00	49712SS	49812SS		
30	49621SS	0.75	49721SS	49821SS	49503	49513
	49622SS	1.00	49722SS	49822SS		
35	49631SS	0.75	49731SS	49831SS	49504	49514
	49632SS	1.00	49732SS	49832SS		
	49633SS	1.50	49733SS	49833SS		
	49634SS	2.00	49734SS	49834SS		
50	49641SS	0.75	49741SS	49841SS	49505	49515
	49642SS	1.00	49742SS	49842SS		
	49643SS	1.50	49743SS	49843SS		
	49644SS	2.00	49744SS	49844SS		



WORLD HEADQUARTERS

15700 S. WATERLOO ROAD  
CLEVELAND, OH 44110-3898  
877.426.2504  
JERGENSINC.COM/WORKHOLDING  
WORKHOLDING@JERGENSINC.COM

FIND OUR WORKHOLDING PRODUCTS  
AND SUPPORTING INFO ONLINE.



DISTRIBUTED BY:



WORKHOLDING SOLUTIONS



SPECIALTY FASTENERS

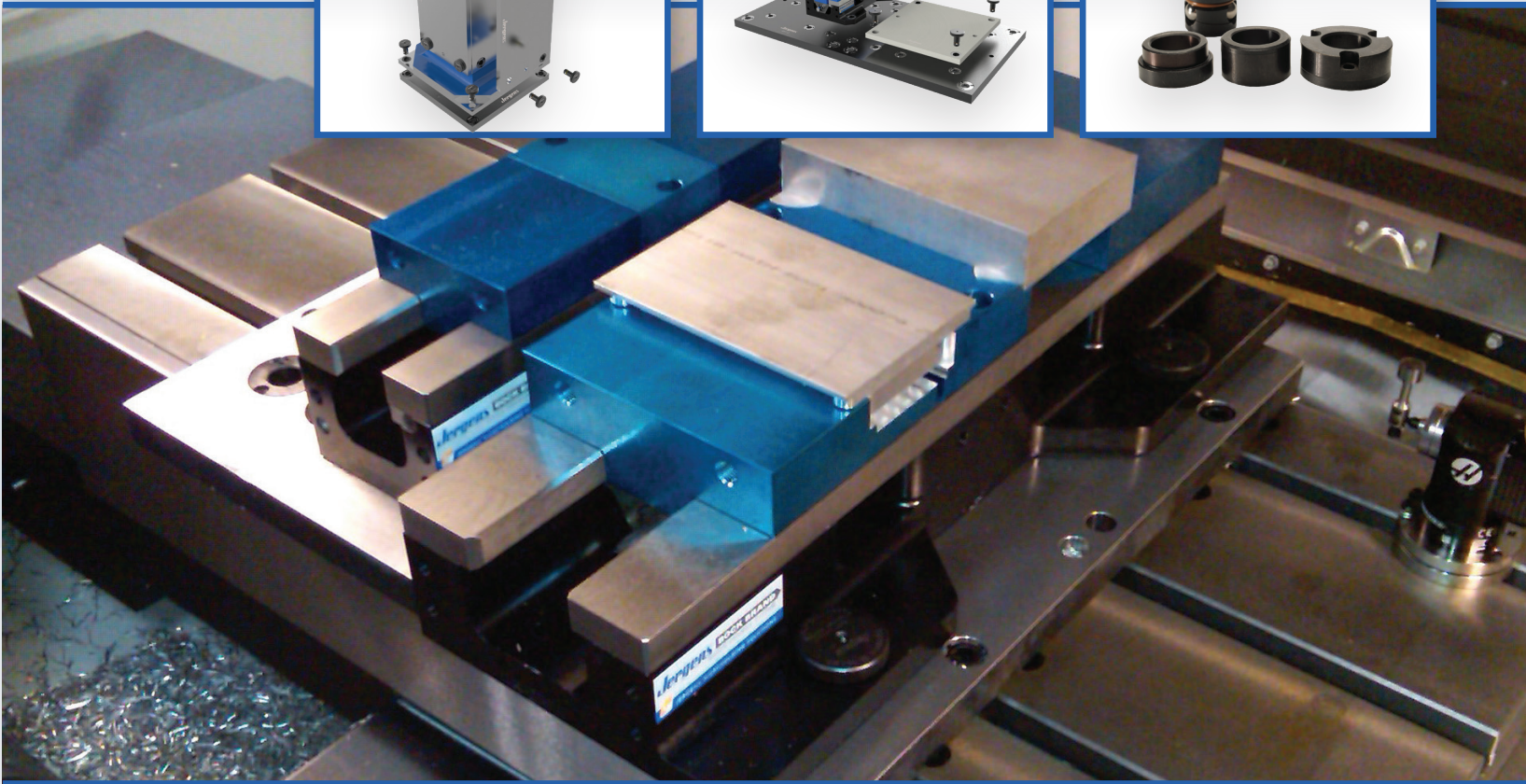
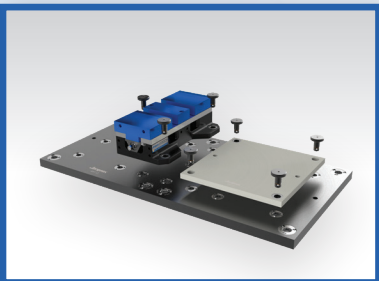
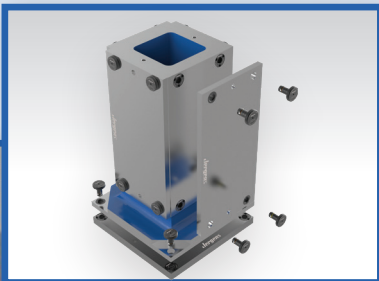


LIFTING SOLUTIONS

©2024 JERGENS, INC.



BALL LOCK® QUICK CHANGE SYSTEM



WORKHOLDING SOLUTIONS | SPECIALTY FASTENERS | LIFTING SOLUTIONS

©2024 JERGENS, INC.



15700 S. WATERLOO ROAD, CLEVELAND, OH 44110-3898  
877.426.2504 | JERGENSINC.COM/WORKHOLDING | WORKHOLDING@JERGENSINC.COM







## THE ORIGINAL QUICK-CHANGE MOUNTING SYSTEM

Since its introduction in the mid 1970's, Jergens Ball Lock® Mounting System has been and continues to be the standard for performance & quality in quick-change mounting and fixturing. Ball Lock® design features continue to be absolutely essential in today's manufacturing environment dominated by...

- **Short lead times**
- **Smaller batch sizes**
- **Frequent set-ups**
- **Fixture-flexibility for fast response to production run changes**

The Ball Lock® Mounting System Features...

- **Combined locating & locking in the same motion**
- **Repeatability of +/- .0005" (+/- 0.03mm) or better**
- **650 to 20,000 lbs of holding force**
- **Can eliminate the need for indicating on CNC machines**



## REDUCE SET-UP TIMES TO JUST SECONDS

The Ball Lock® Mounting System provides a proven method to quickly and accurately locate and lock fixtures onto machine tables and subplates.

- **Easily transferring fixtures and jobs across multiple machines**
- **Fixtures can often be exchanged in less than a minute**
- **Fixtures can be quickly exchanged between different Ball Lock® optimized machines**
- **Increase productivity from existing HMC or VMC machines**

## HUNDREDS OF THOUSANDS OF SUCCESSFUL INSTALLATIONS WORLDWIDE

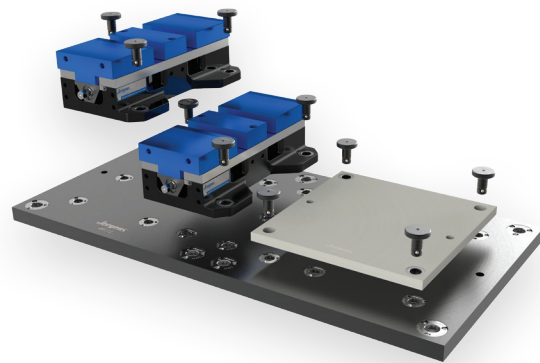
"The applications of the Ball Lock® Mounting System are basically limitless - you're completely free from the design limitations of common tooling. We have increased utilization rates by 75%-90%."

### - Ball Lock® Mounting System User

No other mounting system comes close to matching the universe of dedicated users worldwide. Every day, countless millions of parts are machined from set-ups that rely on the performance & accuracy of the Ball Lock® Mounting System.



## THE BALL LOCK® MOUNTING SYSTEM CAN DELIVER...



The Ball Lock® Mounting System is the single most cost efficient and versatile fixturing system for horizontal and vertical machining centers. In seconds, you can accurately change-out and/or connect...

- **Fixtures**
- **Chucks**
- **Vises**
- **Pallets**
- **Also useful for assembly and welding fixtures**

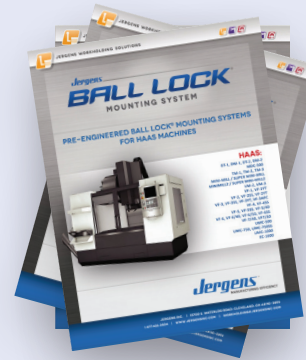
## BALL LOCK® OPTIMIZED SUBPLATES & FIXTURE PLATES FOR ALL YOUR MACHINING NEEDS...

Jergens offers a full range of standard sub-plates and fixture plates for all popular machines. Besides offering hundreds of stock fixture plate shapes, Jergens can work with you to produce special configurations for custom needs.

## STAINLESS STEEL FOR WET OR HAZARDOUS ENVIRONMENTS

The 17-4 stainless steel Ball Lock® mounting system enables you to realize the many benefits that only the Ball Lock® System can deliver in the most corrosive, caustic, wet or extreme operating environments.

### SELECTOR GUIDES FOR HAAS, MAZAK, DOOSAN, HURCO, AND MORE!

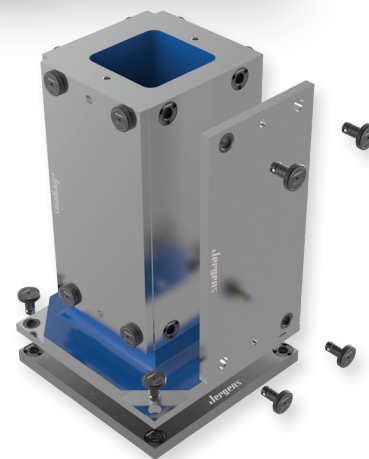


## INTEGRATED WORKHOLDING SYSTEMS BALL LOCK® PUTS IT ALL TOGETHER

Choose from a wide range of standard workholding tooling with integrated Ball Lock® mounting to maximize productivity.

A sampling of Jergens integrated tooling includes:

- **Ball Lock® Production Vises**
- **2 & 4 Sided Tooling Columns**
- **Ball Lock® Base Vise Columns**
- **Compatible with Jergens 5-Axis Tooling**

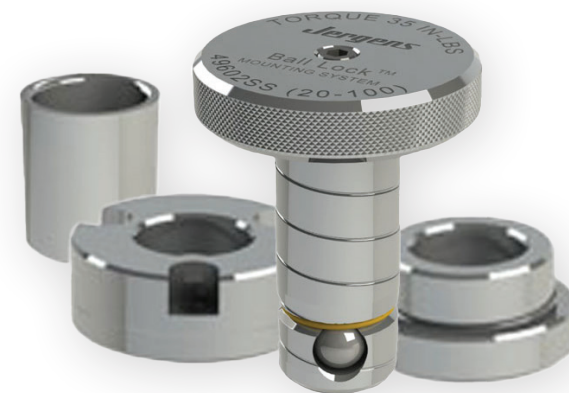


## BEHIND EVERY BALL LOCK® MOUNTING SYSTEM...

No matter what your application, Jergens possesses the expert technical support to help with

- **Special engineering design support**
- **Up-time evaluation & consulting**
- **Application assistance**
- **Field training**

We are committed to helping you realize the full value and benefit that the Ball Lock® quick change mounting and fixturing system can deliver, such as featured in the case histories below.



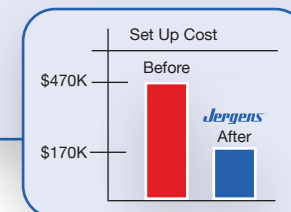
## IT'S NOT JUST A FIXTURING SYSTEM - ITS YOUR COMPETITIVE EDGE

The Ball Lock® Mounting System is not just a quick change fixturing and mounting system - its real net benefit of reducing set-up time and maximizing throughput helps you produce more for less cost.

### MILITARY/DEFENSE CONTRACTOR

**Application:**  
Multiple job changes average 15 to 20 set up changes per week

**Results:**  
76 hours per week set up time reduction  
3,800 annual machine hours gained  
Annual Cost Saving: \$300,000+



### ORTHOPEDIC MANUFACTURER

**Application:**  
Vise set up to machine table

**Set Up Time:**  
Original Method - 60-90 min.

**Results:**  
Set up with Ball Lock® 1-5 minutes  
Set up time reduction = 94%

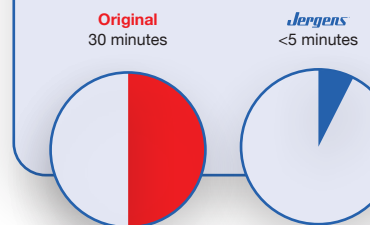


### JOB SHOP

**Application:**  
Rotary indexer set up

**Set Up Time:**  
Original Method - 30 min.

**Results:**  
Set up reduced to <5 min.  
Set up time reduction = 87%



## TIME, PRODUCTIVITY & MONEY SAVING RESULTS:

Reducing set up time 2 hours per day results in:

- **500 machine hours/year for additional work**
- **Saving over \$40,000/year at typical shop billing rates**