



NEW

Patented SP2000™ Side-Pull Style Hoist Rings



RED INDICATES
LOOSE



BLACK INDICATES
TIGHT

Jergens **LIFT-CHECK™** HOIST RINGS

Security, safety and performance to make you flip!

Lift Check™, Side-Pull Style Hoist Ring - with built-in Tension Indication System - is ideal for heavy applications such as mold flipping

The Jergens SP2000™, Patented Lift Check™, Side-Pull Style Hoist Ring is ideal for flipping fixtures, dies and molds. The hoist ring is low profile and has a unique bolt retention design. The oversized forged bale easily adapts to larger hoist hooks. Its relatively light weight makes it easier to handle. This hoist ring assures that your application is secure and ready to lift. The Lift-Check™ is comprised of a Jergens' patented proprietary hex head cap screw which integrates the Visual Tension Indicator which confirms engagement – clearly illustrates whether bolt joint is loose or tight.

- » The Patented Lift-Check™ SP2000 Hoist Rings are rated at 5:1 strength Factor & Proof tested to 200% of rated load capacity, certificate of proof test provided, in accordance with ASME B30.26.
- » Visual Tension Indicator confirms engagement – clearly illustrates whether bolt joint is loose or tight.
- » Ensures safety and provides accuracy of +/- 10% of designed tension
- » Hands-free inspection at a distance, prior to the lift
- » Reduces installation time
- » No torque wrench or calibration needed
- » The patented Lift Check™ Bolt conforms to the chemical and physical requirements of ASTM A574 standards
- » Lift-Check™ bolts are reusable and provide reliable visual indication of joint clamping force. Bolt kits available for Jergens hoist ring upgrades.
- » **MADE IN THE USA**

Lift-Check™ hoist rings are part of a full range of lifting solutions that include other hoist rings styles, adjustable chain sling, pivoting lifting rings, eye nuts, shoulder and swivel eye bolts and hold down clips.

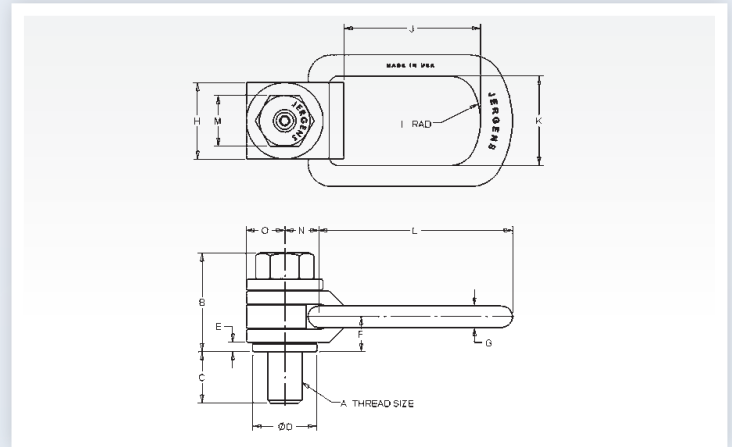
Jergens®
MANUFACTURING EFFICIENCY





Lift Check™, SP2000™, Side-Pull Style Hoist Rings

- » SP2000 Pull Hoist Rings are rated at 5:1 strength Factor & Proof tested to 200% of rated load capacity, in accordance with ASME B30.26*.
- » Full 360° Swivel and 180° Pivot Action
- » Material: Alloy Steel
- » Finish: Black Oxide
- » Washer: Zinc Plated
- » Bail, Bolt, U-Channel, Spacer, Retaining ring, Bushing are Magnetic Particle Inspected



Part Number	Load Capacity (lbs)	Thread Size A	B	C	D	E	F	G	H	I	J	K	L	M	N	O	Torque ft.lbs.	Wt. lbs.
47533LC	1,800	1/2-13	2 1/8	3/4	1 3/8	7/32	27/32	1/2	1 3/4	1 1/2	3 3/8	2	4 3/4	3/4	3/4	7/8	15	2
47534LC	2,500	5/8-11	2 3/16	15/16	1 3/8	7/32	27/32	1/2	1 3/4	1 1/2	3 3/8	2	4 3/4	15/16	3/4	7/8	25	2
47535LC	4,100	3/4-10	2 11/16	1 1/8	1 7/8	5/16	1 1/16	5/8	2 1/4	2	4	2 5/8	5 11/16	1 1/8	1	1 1/8	50	4.5
47536LC	7,100	1-8	2 7/8	1 1/2	1 7/8	5/16	1 1/16	5/8	2 1/4	2	4	2 5/8	5 11/16	1 1/2	1	1 1/8	130	5
47537LC	14,000	1 1/4-7	5 5/16	1 7/8	3 1/4	7/16	2 5/32	1 1/16	3 3/4	3	7 11/16	4 3/8	10 7/16	1 7/8	1 15/16	1 7/8	150	25.5
47538LC	17,200	1 1/2-6	5 3/8	2 1/4	3 1/4	7/16	2 5/32	1 1/16	3 3/4	3	7 11/16	4 3/8	10 7/16	2 1/4	1 15/16	1 7/8	250	26.5
47539LC	27,500	2-4 1/2	5 3/4	3 1/8	3 1/4	7/16	2 5/32	1 1/16	3 3/4	3	7 11/16	4 3/8	10 7/16	3	1 15/16	1 7/8	300	30

Part Number	Load Capacity (kg)	Thread Size A	B	C	D	E	F	G	H	I	J	K	L	M	N	O	Torque N m	Wt. lbs.
47583LC	725	M12 X 1.75	52	18	35	6	22	13	44	38	86	51	120	18	19	22	20	1
47584LC	1,400	M16 X 2.0	54	24	35	6	22	13	44	38	86	51	120	24	19	22	40	1
47585LC	2,290	M20 X 2.5	67	30	48	8	27	16	57	51	102	67	145	30	25	29	70	2
47586LC	3,050	M24 X 3.0	70	36	48	8	27	16	57	51	102	67	145	36	25	29	140	2
47587LC	4,850	M30 X 3.5	130	45	83	11	55	27	95	76	196	111	265	46	49	48	350	11.5
47588LC	7,500	M36 X 4.0	133	54	83	11	55	27	95	76	196	111	265	55	49	48	550	12
47591LC	8,700	M42 X 4.5	137	65	83	11	55	27	95	76	196	111	265	65	49	48	800	12.5
47589LC	10,000	M48 X 5.0	143	70	83	11	55	27	95	76	196	111	265	75	49	48	1200	13



Jergens
MANUFACTURING EFFICIENCY

WORKHOLDING SOLUTIONS | SPECIALTY FASTENERS | LIFTING SOLUTIONS

©2020 JERGENS, INC. | IMG0220

15700 S. WATERLOO ROAD, CLEVELAND, OH 44110-3898

☎ 877.440.LIFT (5438) | 🌐 JERGENSINC.COM/LIFTING | ✉ LIFTING@JERGENSINC.COM

