

KSeries

K2400 / K2000 / K1800

**INDUSTRIAL GRADE.
AMERICAN MADE.
SINCE 1911.**

**MADE
IN THE USA** 

KENNEDY®

TOOL BOXES / CHESTS & CABINETS / HIGH DENSITY STORAGE / VISUAL TOOL CONTROL / EKENTROL

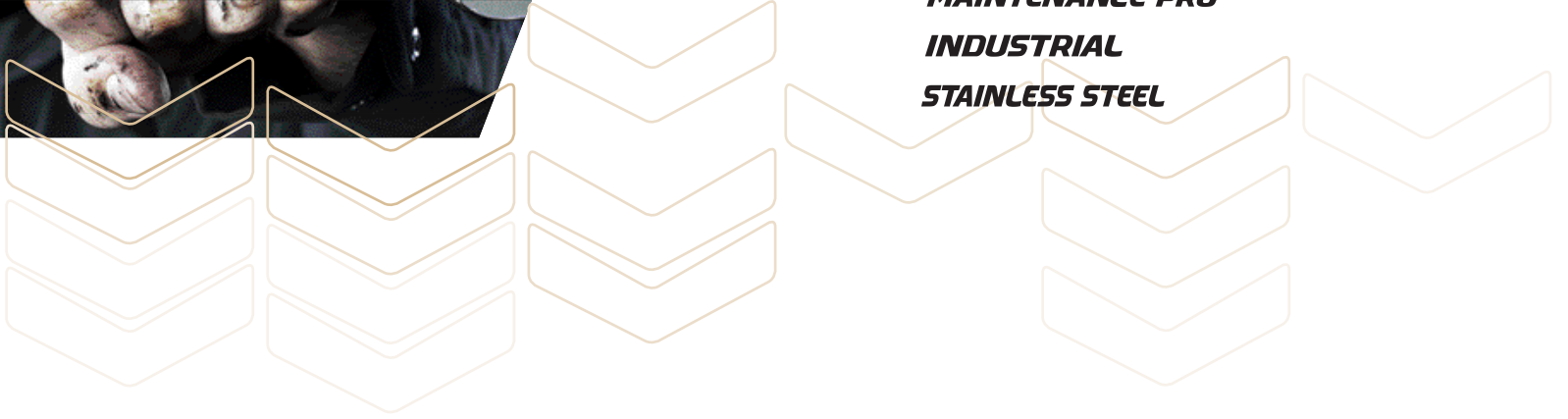
KSERIES



KSERIES

ROLLER CABINETS / TOP CHESTS / CANOPIES / ADD ONS

BENCHMARK®
MAINTENANCE PRO™
INDUSTRIAL
STAINLESS STEEL



10" Center Wheel Axle Adds Strength,
Stability and Increased Mobility

Metal Thickness on Extra
Wide Drawers: 14/16 gauge

Double Wall Construction



Full depth inner wall supports
drawer loads and transfers
weight directly onto the
bottom pan.

Inner wall piercings at 2 inch
spacing allows for custom
drawer configuration.

KENNEDYMFG.com



MADE IN THE USA



	K2400 SERIES - 24" DEEP	ROLLER CABINET	CHESTS	CANOPY	SIDE CABINET	LOCKER
BENCHMARK	62" W	62017	62118	-	30200/20200 20201/20204	40200
	60" W	60121	60000	60101	30200/20200 20201/20204	40200
	53" W	53001	53000	53101	30200/20200 20201/20204	40200
	46" W	46003	46000	46101	30200/20200 20201/20204	40200
	45" W	45028 45018 45016	-	-	30200/20200 20201/20204	
	38" W	38028 38018 38016	-	-	30200/20200 20201/20204	
	38" W (TECH CABINET)	38115	-	-	-	
	31" W	31028 31018 31016	-	-	30200	
	K2000 SERIES - 20" DEEP	ROLLER CABINET	CHESTS	CANOPY	SIDE CABINET	
MAINTENANCE PRO	58" W	5804MP	-	-	306MP	300MP
	44" W	4400MP	4405MP	-	306MP	300MP
	39" W	3900MP	3905MP/3912MP	-	306MP	300MP
	34" W	3407MP	3400MP/3412MP	-	306MP	300MP
	29" W	2907MP	2912MP/2905MP	-	306MP	300MP
INDUSTRIAL	41" W	10495/10494	10486	-	306X	302X
	34" W	348X	-	-	306X	302X
	29" W	295(X)/297(X)	2805(X)/2905(X)	-	202X/205(X)	202X
	STAINLESS STEEL	28085/28087/28197	-	-	-	-
	K1800 SERIES - 18" DEEP	ROLLER CABINET	CHESTS	CANOPY	SIDE CABINET	
MAINTENANCE PRO	53" W	5300MP	5302MP	-	382MP	380MP
	27" W (39" H)	2702MP	2700MP	-	382MP	380MP
INDUSTRIAL	39" W (39" H)	10493/315X	10488/305X	-	386X	382X
	39" W (35" H)	10491/310X	10488/305X	-	185(X)	182X
	27" W (39" H)	376X/378X	285(X)/2705(X)	-	386X	382X
	27" W (35" H)	273(X)/275(X)/277(X)	285(X)/2705(X)	-	185(X)	182X
	21" W	21040	220	-	-	-

See Signature Series for Industrial Complimentary Machinists', Mechanics' Chests and Mid-Base

K2400

BENCHMARK®

When performance matters most, the K2400 is job ready. *The ultimate in tool storage the K2400 is 24" in depth and has everything you want.* From the safety of gas shock lid stays to rugged, heavy-duty casters you can store it all here- **GUARANTEED.**



Gas-Shock Lid Stays
on Chests and Canopies

Smooth Operating
Ball-Bearing Drawer Slides
Hold Up to 120 lbs. or 240 lbs.
for 10" or greater

High Security Tubular
Locking System

Heavy-Duty 6" x 2"
Roller Bearing Casters
with 900 lb Capacity
Per Caster

Full-Width, Extruded
Aluminum Drawer Pulls w/
Black Plastic Endcaps

Aluminum Corner Trim
Protects Against Nicks
and Scrapes / Coated
MDF Work Surface

Soft Rubber Ergonomic
Push Handle

Kennedy Badged Non-
Slip Drawer Liners



BK R BL BUR YW
COLORS AVAILABLE

METAL THICKNESS

Frame	16/18 ga
Drawers	18 ga
Extra Wide Drawers	14 ga

INDUSTRY SOLUTIONS



AEROSPACE



AUTO TECH



ENERGY



FACILITIES
MANAGEMENT



FLEET
MAINTENANCE



GENERAL
MANUFACTURING



MACHINE
SHOPS



VOTECH

KENNEDYMFG.com

62"

BENCHMARK®

62118 1-DOOR, 8-DRAWER CHEST

OVERALL:	DRS.	WIDTH	DEPTH	HEIGHT	NET WT	SHIP WT	CAPACITY
	8	62"	24"	22 7/8"	215 lbs.	240 lbs.	22,991 cu. in.
TOP TILL:	-	61 1/2"	23"	4 3/4"			-
LEFT BANK:	2	13"	22 3/8"	2"			120 lbs.
	1	13"	22 3/8"	4"			120 lbs.
	1	13"	22 3/8"	6"			120 lbs.
CENTER BANK:	2	25"	22 3/8"	2"			120 lbs.
	1	25"	22 3/8"	4"			120 lbs.
	1	25"	22 3/8"	6"			120 lbs.
COMPARTMENT:	-	14"	23"	14 3/8"			-

62017 17-DRAWER CABINET

OVERALL:	DRS.	WIDTH	DEPTH	HEIGHT	NET WT	SHIP WT	CAPACITY
	17	62"	24"	43 1/2"	465 lbs.	490 lbs.	29,695 cu. in.
XWIDE TOP DRAWER:	1	40 3/8"	22 3/8"	6"			440 lbs.
RIGHT/LEFT BANK:	4	13"	22 3/8"	2"			120 lbs.
	2	13"	22 3/8"	4"			120 lbs.
	3	13"	22 3/8"	6"			120 lbs.
	2	13"	22 3/8"	8"			120 lbs.
CENTER BANK:	2	25 1/4"	22 3/8"	2"			120 lbs.
	1	25 1/4"	22 3/8"	4"			120 lbs.
	1	25 1/4"	22 3/8"	6"			120 lbs.
	1	25 1/4"	22 3/8"	8"			120 lbs.



60"

BENCHMARK®

60000 7-DRAWER TOP CHEST

OVERALL:	DRS.	WIDTH	DEPTH	HEIGHT	NET WT	SHIP WT	CAPACITY
	7	60"	24"	22 7/8"	280 lbs.	355 lbs.	21,752 cu. in.
TOP TILL:	-	60"	23"	4 3/4"			-
SMALL BANK:	2	12 7/8"	22 3/8"	2"			120 lbs.
	1	12 7/8"	22 3/8"	4"			120 lbs.
	1	12 7/8"	22 3/8"	6"			120 lbs.
LARGE BANK:	2	38 7/8"	22 3/8"	4"			220 lbs.
	1	38 7/8"	22 3/8"	6"			220 lbs.

60121 11-DRAWER CABINET

OVERALL:	DRS.	WIDTH	DEPTH	HEIGHT	NET WT	SHIP WT	CAPACITY
	11	60"	24"	43 1/2"	460 lbs.	485 lbs.	30,094 cu. in.
TOP DRAWER:	1	54 3/8"	22 3/8"	5"			440 lbs.
SMALL BANK:	2	12 7/8"	22 3/8"	2"			120 lbs.
	3	12 7/8"	22 3/8"	4"			120 lbs.
	1	12 7/8"	22 3/8"	6"			120 lbs.
LARGE BANK:	3	38 7/8"	22 3/8"	4"			220 lbs.
	1	38 7/8"	22 3/8"	10"			440 lbs.

60101 TOP CANOPY

OVERALL:	DRS.	WIDTH	DEPTH	HEIGHT	NET WT	SHIP WT	CAPACITY
	-	60"	24"	22 3/4"	90 lbs.	165 lbs.	24,500 cu. in.

- 30pc Toolholder Hook Set (99852)





53" BENCHMARK®

53000 7-DRAWER TOP CHEST

OVERALL:	DRS.	WIDTH	DEPTH	HEIGHT	NET WT	SHIP WT	CAPACITY
	7	53"	24"	22 7/8"	260 lbs.	355 lbs.	19,018 cu. in.
TOP TILL:	-	53"	23"	4 3/4"			-
SMALL BANK:	2	12 7/8"	22 3/8"	2"			120 lbs.
	1	12 7/8"	22 3/8"	4"			120 lbs.
	1	12 7/8"	22 3/8"	6"			120 lbs.
LARGE BANK:	2	31 7/8"	22 3/8"	4"			220 lbs.
	1	31 7/8"	22 3/8"	6"			220 lbs.

53001 11-DRAWER CABINET

OVERALL:	DRS.	WIDTH	DEPTH	HEIGHT	NET WT	SHIP WT	CAPACITY
	11	53"	24"	43 1/2"	460 lbs.	485 lbs.	26,815 cu. in.
TOP DRAWER:	1	47 3/8"	22 3/8"	5"			440 lbs.
SMALL BANK:	2	12 7/8"	22 3/8"	2"			120 lbs.
	3	12 7/8"	22 3/8"	4"			120 lbs.
	1	12 7/8"	22 3/8"	6"			120 lbs.
LARGE BANK:	3	31 7/8"	22 3/8"	4"			220 lbs.
	1	31 7/8"	22 3/8"	10"			440 lbs.

53101 TOP CANOPY

OVERALL:	DRS.	WIDTH	DEPTH	HEIGHT	NET WT	SHIP WT	CAPACITY
	-	53"	24"	22 3/4"	90 lbs.	165 lbs.	21,250 cu. in.

- 30pc Toolholder Hook Set (99852)



46" BENCHMARK®

46000 8-DRAWER TOP CHEST

OVERALL:	DRS.	WIDTH	DEPTH	HEIGHT	NET WT	SHIP WT	CAPACITY
	8	46"	24"	22 7/8"	210 lbs.	230 lbs.	15,976 cu. in.
TOP TILL:	-	46"	23"	4 3/4"			-
SMALL BANK:	2	12 7/8"	22 3/8"	2"			120 lbs.
	1	12 7/8"	22 3/8"	4"			120 lbs.
	1	12 7/8"	22 3/8"	6"			120 lbs.
LARGE BANK:	2	24 7/8"	22 3/8"	2"			120 lbs.
	1	24 7/8"	22 3/8"	4"			120 lbs.
	1	24 7/8"	22 3/8"	6"			120 lbs.

46003 11-DRAWER CABINET

OVERALL:	DRS.	WIDTH	DEPTH	HEIGHT	NET WT	SHIP WT	CAPACITY
	11	46"	24"	43 1/2"	425 lbs.	450 lbs.	22,072 cu. in.
TOP DRAWER:	1	40 3/8"	22 3/8"	5"			440 lbs.
SMALL BANK:	2	12 7/8"	22 3/8"	2"			120 lbs.
	1	12 7/8"	22 3/8"	4"			120 lbs.
	1	12 7/8"	22 3/8"	6"			120 lbs.
	1	12 7/8"	22 3/8"	8"			120 lbs.
LARGE BANK:	2	24 7/8"	22 3/8"	2"			120 lbs.
	1	24 7/8"	22 3/8"	4"			120 lbs.
	1	24 7/8"	22 3/8"	6"			120 lbs.
	1	24 7/8"	22 3/8"	8"			120 lbs.

46101 TOP CANOPY

OVERALL:	DRS.	WIDTH	DEPTH	HEIGHT	NET WT	SHIP WT	CAPACITY
	-	46"	24"	22 3/4"	125 lbs.	130 lbs.	22,072 cu. in.

- 30pc Toolholder Hook Set (99852)



45" BENCHMARK®

45016 6-DRAWER CABINET

OVERALL:	DRS.	WIDTH	DEPTH	HEIGHT	NET WT	SHIP WT	CAPACITY
	6	45"	24"	43 1/2"	310 lbs.	335 lbs.	22,900 cu. in.
DRAWERS:	1	38 7/8"	22 3/8"	6"			220 lbs.
	2	38 7/8"	22 3/8"	2"			120 lbs.
	1	38 7/8"	22 3/8"	4"			220 lbs.
	1	38 7/8"	22 3/8"	6"			220 lbs.
	1	38 7/8"	22 3/8"	8"			220 lbs.

45018 8-DRAWER CABINET

OVERALL:	DRS.	WIDTH	DEPTH	HEIGHT	NET WT	SHIP WT	CAPACITY
	8	45"	24"	43 1/2"	328 lbs.	355 lbs.	22,317 cu. in.
DRAWERS:	2	38 7/8"	22 3/8"	3"			120 lbs.
	2	38 7/8"	22 3/8"	2"			120 lbs.
	3	38 7/8"	22 3/8"	4"			220 lbs.
	1	38 7/8"	22 3/8"	6"			220 lbs.

45028 8-DRAWER CABINET

OVERALL:	DRS.	WIDTH	DEPTH	HEIGHT	NET WT	SHIP WT	CAPACITY
	8	45"	24"	43 1/2"	328 lbs.	355 lbs.	22,317 cu. in.
DRAWERS:	1	38 7/8"	22 3/8"	4"			220 lbs.
	3	38 7/8"	22 3/8"	2"			120 lbs.
	3	38 7/8"	22 3/8"	4"			220 lbs.
	1	38 7/8"	22 3/8"	6"			220 lbs.



Model 45018 w/ customization

38" BENCHMARK®

38016 6-DRAWER CABINET

OVERALL:	DRS.	WIDTH	DEPTH	HEIGHT	NET WT	SHIP WT	CAPACITY
	6	32"	24"	43 1/2"	310 lbs.	300 lbs.	18,776 cu. in.
DRAWERS:	1	31 7/8"	22 3/8"	6"			220 lbs.
	2	31 7/8"	22 3/8"	2"			120 lbs.
	1	31 7/8"	22 3/8"	4"			220 lbs.
	1	31 7/8"	22 3/8"	6"			220 lbs.
	1	31 7/8"	22 3/8"	8"			220 lbs.

38018 8-DRAWER CABINET

OVERALL:	DRS.	WIDTH	DEPTH	HEIGHT	NET WT	SHIP WT	CAPACITY
	8	32"	24"	43 1/2"	293 lbs.	318 lbs.	18,302 cu. in.
DRAWERS:	2	31 7/8"	22 3/8"	3"			120 lbs.
	2	31 7/8"	22 3/8"	2"			120 lbs.
	3	31 7/8"	22 3/8"	4"			220 lbs.
	1	31 7/8"	22 3/8"	6"			220 lbs.

38028 8-DRAWER CABINET

OVERALL:	DRS.	WIDTH	DEPTH	HEIGHT	NET WT	SHIP WT	CAPACITY
	8	32"	24"	43 1/2"	293 lbs.	318 lbs.	18,302 cu. in.
DRAWERS:	1	31 7/8"	22 3/8"	4"			220 lbs.
	3	31 7/8"	22 3/8"	2"			120 lbs.
	3	31 7/8"	22 3/8"	4"			220 lbs.
	1	31 7/8"	22 3/8"	6"			220 lbs.



Model 38016 w/ customization

K2400

38" BENCHMARK®

38115 5-DRAWER TECHNICIAN CABINET

OVERALL:	DRS.	WIDTH	DEPTH	HEIGHT	NET WT	SHIP WT	CAPACITY
	5	38 5/8"	25 3/8"	46"	299 lbs.	340 lbs.	18,104 cu. in.
DRAWERS:	2	38"	24"	3"			120 lbs.
	1	38"	24"	4"			220 lbs.
	1	38"	24"	6"			220 lbs.
	1	38"	24"	10"			440 lbs.
TILL:	-	38"	24"	6 1/2"			-

- High Security Tubular Lock
- Lock/Unlock Drawers From Inside the Till
- Gas Shock Lid Stays
- Pry Bar Storage Compartment
- Drawer Liners
- Ergonomic Handle



31" BENCHMARK®

31016 6-DRAWER CABINET

OVERALL:	DRS.	WIDTH	DEPTH	HEIGHT	NET WT	SHIP WT	CAPACITY
	6	30 1/2"	24"	43 1/2"	210 lbs.	220 lbs.	14,873 cu. in.
DRAWERS:	1	25 1/4"	22 3/8"	6"			120 lbs.
	2	25 1/4"	22 3/8"	2"			120 lbs.
	1	25 1/4"	22 3/8"	4"			120 lbs.
	1	25 1/4"	22 3/8"	6"			120 lbs.
	1	25 1/4"	22 3/8"	8"			120 lbs.

31018 8-DRAWER CABINET

OVERALL:	DRS.	WIDTH	DEPTH	HEIGHT	NET WT	SHIP WT	CAPACITY
	8	30 1/2"	24"	43 1/2"	210 lbs.	220 lbs.	14,873 cu. in.
DRAWERS:	2	25 1/4"	22 3/8"	3"			120 lbs.
	2	25 1/4"	22 3/8"	2"			120 lbs.
	3	25 1/4"	22 3/8"	4"			120 lbs.
	1	25 1/4"	22 3/8"	6"			120 lbs.

31028 8-DRAWER CABINET

OVERALL:	DRS.	WIDTH	DEPTH	HEIGHT	NET WT	SHIP WT	CAPACITY
	8	30 1/2"	24"	43 1/2"	210 lbs.	220 lbs.	14,873 cu. in.
DRAWERS:	1	25 1/4"	22 3/8"	4"			120 lbs.
	3	25 1/4"	22 3/8"	2"			120 lbs.
	3	25 1/4"	22 3/8"	4"			120 lbs.
	1	25 1/4"	22 3/8"	6"			120 lbs.

30200 6-DRAWER ADD ON SIDE CABINET

OVERALL:	DRS.	WIDTH	DEPTH	HEIGHT	NET WT	SHIP WT	CAPACITY
	6	30 1/2"	24"	43 1/2"	210 lbs.	220 lbs.	14,873 cu. in.
DRAWERS:	2	25 1/4"	22 3/8"	6"			120 lbs.
	2	25 1/4"	22 3/8"	2"			120 lbs.
	1	25 1/4"	22 3/8"	4"			120 lbs.
	1	25 1/4"	22 3/8"	8"			120 lbs.



Model 31016
w/ Customization



Model 30200



40200 3-DRAWER SIDE LOCKER

OVERALL:	DRS.	WIDTH	DEPTH	HEIGHT	NET WT	SHIP WT	CAPACITY
	3	26"	24"	62"	160 lbs.	200 lbs.	27,000 cu. in.
DRAWERS:	3	19 1/2"	22 1/2"	4"			120 lbs.
SHELF:	1	19 1/2"	22 1/2"	1"			120 lbs.

- Reversible - Hangs on Either Side of Roller Cabinets
- Includes 3 Drawers, w/Ball-Bearing Slides and 1 Adjustable Shelf
- Fits Any 24" Deep K2400 Series Cabinet or Combo
- Metal Thickness: Body - 16 ga. Drawers - 18 ga.



20200 6-DRAWER SIDE CABINET

OVERALL:	DRS.	WIDTH	DEPTH	HEIGHT	NET WT	SHIP WT	CAPACITY
	6	21"	24"	35 3/4"	170 lbs.	200 lbs.	7,622 cu. in.
DRAWERS:	1	15"	22 3/8"	6"			120 lbs.
	2	15"	22 3/8"	2"			120 lbs.
	1	15"	22 3/8"	4"			120 lbs.
	1	15"	22 3/8"	6"			120 lbs.
	1	15"	22 3/8"	8"			120 lbs.



20204 4-DRAWER/2-FILE DRAWER SIDE CABINET

OVERALL:	DRS.	WIDTH	DEPTH	HEIGHT	NET WT	SHIP WT	CAPACITY
	4	21"	24"	35 3/4"	170 lbs.	200 lbs.	7,799 cu. in.
DRAWERS:	1	15"	22 3/8"	2"			120 lbs.
	1	15"	22 3/8"	4"			120 lbs.
	2	15"	22 3/8"	11"			120 lbs.

20201 1-DRAWER/1-DOOR SIDE CABINET

OVERALL:	DRS.	WIDTH	DEPTH	HEIGHT	NET WT	SHIP WT	CAPACITY
	1	21"	24"	35 3/4"	170 lbs.	200 lbs.	8,753 cu. in.
DRAWER:	1	15"	22 1/2"	6"			120 lbs.

- Fits Any 24" Deep K2400 Series Roller Cabinet
- Reversible - Hangs on Either Side of Roller Cabinets
- Heavy Duty, Non-Slip Drawer Liners & Full-Width Aluminum Drawer Pulls
- Metal Thickness: Body - 16 ga. Drawers - 18 ga.
- Includes coated MDF Work Surface



Model 20201

TB24 24" HANG ON TOOLBOARD PANEL

OVERALL:	WIDTH	DEPTH	HEIGHT	NET WT	SHIP WT
	22"	1/2"	35 3/4"	6.5 lbs.	8.5 lbs.

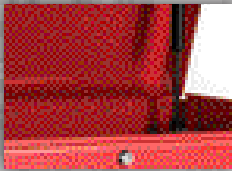
- Hangs on Either Side of Roller Cabinets
- 10pc Toolholder Hook Set (99851)



K2000

MAINTENANCE PRO™ INDUSTRIAL STAINLESS STEEL

The K2000 is 20" in depth and ready to handle all your day to day needs. Durability comes standard so you get demanding jobs done time and time again.



Gas-Shock Lid Stays In Top Chests



Smooth Operating Ball-Bearing Drawer Slides Hold Up to 120 lbs. or 240 lbs. for 6" or greater



High Security Tubular Locking System



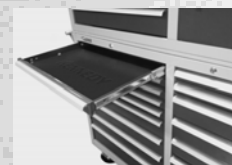
10" Center Wheel Axle Adds Strength, Stability and Increased Mobility



Heavy-Duty Roller Bearing Casters



Tubular Steel End Handle



Kennedy Badged Non-Slip Drawer Liners Maintenance Pro™ Only

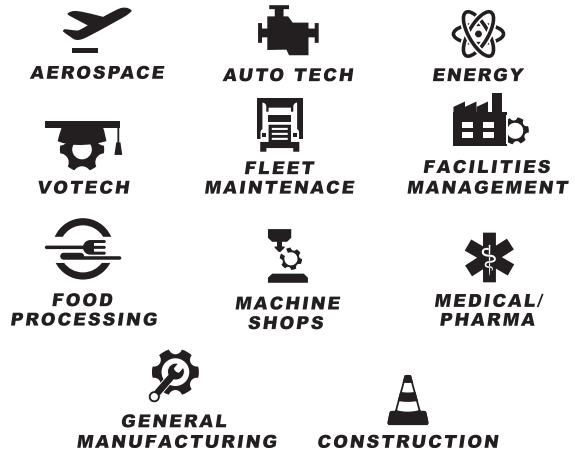


BK R BL B YW
COLORS AVAILABLE

STANDARD FEATURES

	STEEL GAUGE	CENTER WHEEL AXLE	CASTERS	WORK SURFACES	OTHER
MAINTENANCE PRO™	16/18 ga	Double Bank Units	6x2	Coated MDF	Drawer Liners
INDUSTRIAL	18/20 ga		5x2		

INDUSTRY SOLUTIONS



58"

MAINTENANCE PRO™

5804MP 12-DRAWER CABINET

OVERALL:	DRS.	WIDTH	DEPTH	HEIGHT	NET WT	SHIP WT	CAPACITY
	12	57 1/4"	20"	43 1/2"	388 lbs.	475 lbs.	23,934 cu. in.
TOP DRAWER:	1	52 3/4"	18 1/2"	6"			240 lbs.
LEFT BANK:	2	25"	18 1/2"	2"			120 lbs.
	3	25"	18 1/2"	4"			120 lbs.
	1	25"	18 1/2"	6"			120 lbs.
RIGHT BANK:	2	25"	18 1/2"	2"			120 lbs.
	2	25"	18 1/2"	4"			120 lbs.
	1	25"	18 1/2"	10"			240 lbs.

- Heavy Duty, Non-Slip Drawer Liners & Full-Width Aluminum Drawer Pulls
- Large 6" x 2" Roller Bearing Heavy Duty Casters
- 10" Center Wheel Axle Adds Strength, Stability & Increased Mobility
- Ball Bearing Drawer Slides
- Coated MDF Work Surface



44"

MAINTENANCE PRO™

4405MP 5-DRAWER TOP CHEST

OVERALL:	DRS.	WIDTH	DEPTH	HEIGHT	NET WT	SHIP WT	CAPACITY
	5	43 3/4"	20"	16 1/2"	123 lbs.	137 lbs.	9,723 cu. in.
DRAWERS:	4	25"	18 1/2"	2"			120 lbs.
	1	25"	18 1/2"	4"			120 lbs.
COMPARTMENT:	-	15 1/2"	19 3/8"	15 3/8"			120 lbs.

4400MP 10-DRAWER CABINET

OVERALL:	DRS.	WIDTH	DEPTH	HEIGHT	NET WT	SHIP WT	CAPACITY
	10	43 3/4"	20"	37 3/4"	316 lbs.	331 lbs.	14,305 cu. in.
TOP DRAWER:	1	39 1/2"	18 1/2"	6"			240 lbs.
LEFT BANK:	3	12"	18 1/2"	2"			120 lbs.
	1	12"	18 1/2"	10"			240 lbs.
RIGHT BANK:	2	25"	18 1/2"	2"			120 lbs.
	3	25"	18 1/2"	4"			120 lbs.

- Heavy Duty, Non-Slip Drawer Liners & Full-Width Aluminum Drawer Pulls
- Large 6" x 2" Roller Bearing Heavy Duty Casters
- 10" Center Wheel Axle Adds Strength, Stability & Increased Mobility
- Ball Bearing Drawer Slides
- Coated MDF Work Surface



39" MAINTENANCE PRO™

3912MP 12-DRAWER CHEST

OVERALL:	DRS.	WIDTH	DEPTH	HEIGHT	NET WT	SHIP WT	CAPACITY
	12	39 ¼"	20"	20 7/8"	193 lbs.	203 lbs.	10,313 cu. in.
TOP TILL:	-	39 ¼"	19 ¾"	3 5/8"			120 lbs.
DRAWERS:	9	11"	18 ½"	2"			120 lbs.
	2	39 3/8"	18 ½"	2"			120 lbs.
	1	39 3/8"	18 ½"	4"			120 lbs.

3905MP 5-DRAWER CHEST

OVERALL:	DRS.	WIDTH	DEPTH	HEIGHT	NET WT	SHIP WT	CAPACITY
	5	39 ¼"	20"	18 3/8"	130 lbs.	140 lbs.	9,857 cu. in.
TOP TILL:	-	39 ¼"	19 ¾"	3 5/8"			120 lbs.
DRAWERS:	4	39 3/8"	18 ½"	2"			120 lbs.
	1	39 3/8"	18 ½"	4"			120 lbs.

3900MP 8-DRAWER CABINET

OVERALL:	DRS.	WIDTH	DEPTH	HEIGHT	NET WT	SHIP WT	CAPACITY
	8	39 3/8"	20"	42"	225 lbs.	250 lbs.	17,378 cu. in.
DRAWERS:	3	35"	18 ½"	2"			120 lbs.
	4	35"	18 ½"	4"			120 lbs.
	1	35"	18 ½"	6"			120 lbs.

- Heavy Duty, Non-Slip Drawer Liners & Full-Width Aluminum Drawer Pulls
- Large 6" x 2" Roller Bearing Heavy Duty Casters
- Ball Bearing Drawer Slides
- Coated MDF Work Surface



3912MP/3900MP



3905MP

34" MAINTENANCE PRO™

3400MP 5-DRAWER TOP CHEST

OVERALL:	DRS.	WIDTH	DEPTH	HEIGHT	NET WT	SHIP WT	CAPACITY
	5	34"	20"	18 3/8"	146 lbs.	156 lbs.	8,225 cu. in.
TOP TILL:	-	33 3/4"	19 1/2"	3 5/8"			120 lbs.
DRAWERS:	4	30"	18 1/2"	2"			120 lbs.
	1	30"	18 1/2"	4"			120 lbs.



3412MP 12-DRAWER TOP CHEST

OVERALL:	DRS.	WIDTH	DEPTH	HEIGHT	NET WT	SHIP WT	CAPACITY
	12	34"	20"	20 7/8"	181 lbs.	196 lbs.	8,331 cu. in.
TOP TILL:	-	33 7/8"	19 3/4"	2 5/8"			120 lbs.
DRAWERS:	9	9 3/16"	18"	2"			120 lbs.
	2	30"	18"	2"			120 lbs.
	1	30"	18"	4"			120 lbs.

3407MP 7-DRAWER CABINET

OVERALL:	DRS.	WIDTH	DEPTH	HEIGHT	NET WT	SHIP WT	CAPACITY
	7	34"	20"	40 1/8"	209 lbs.	231 lbs.	14,517 cu. in.
DRAWERS:	3	30"	18 1/2"	2"			120 lbs.
	3	30"	18 1/2"	4"			120 lbs.
	1	30"	18 1/2"	10"			240 lbs.

- Heavy Duty, Non-Slip Drawer Liners & Full-Width Aluminum Drawer Pulls
- Large 6" x 2" Roller Bearing Heavy Duty Casters
- Ball Bearing Drawer Slides
- Coated MDF Work Surface

29"

MAINTENANCE PRO™

2905MP 5-DRAWER TOP CHEST

OVERALL:	DRS.	WIDTH	DEPTH	HEIGHT	NET WT	SHIP WT	CAPACITY
	5	29"	20"	18 3/8"	105 lbs.	114 lbs.	7,077 cu. in.
TOP TILL:	-	28 13/16"	19 3/4"	3 1/16"			120 lbs.
DRAWERS:	4	25 1/16"	18 1/2"	2"			120 lbs.
	1	25 1/16"	18 1/2"	4"			120 lbs.



2912MP 12-DRAWER TOP CHEST

OVERALL:	DRS.	WIDTH	DEPTH	HEIGHT	NET WT	SHIP WT	CAPACITY
	12	29"	20"	20 7/8"	166 lbs.	181 lbs.	7,326 cu. in.
TOP TILL:	-	28 7/8"	19 3/4"	2 5/8"			120 lbs.
DRAWERS:	9	7 9/16"	18 1/2"	2"			120 lbs.
	2	25"	18 1/2"	2"			120 lbs.
	1	25"	18 1/2"	4"			120 lbs.

2907MP 7-DRAWER CABINET

OVERALL:	DRS.	WIDTH	DEPTH	HEIGHT	NET WT	SHIP WT	CAPACITY
	7	29"	20"	40 1/8"	198 lbs.	215 lbs.	12,122 cu. in.
DRAWERS:	3	25"	18 1/2"	2"			120 lbs.
	3	25"	18 1/2"	4"			120 lbs.
	1	25"	18 1/2"	10"			120 lbs.

- Heavy Duty, Non-Slip Drawer Liners & Full-Width Aluminum Drawer Pulls
- Large 6" x 2" Roller Bearing Heavy Duty Casters
- Ball Bearing Drawer Slides
- Coated MDF Work Surface



306MP 6-DRAWER SIDE CABINET

OVERALL:	DRS.	WIDTH	DEPTH	HEIGHT	NET WT	SHIP WT	CAPACITY
	6	13 3/8"	20"	33 1/8"	94 lbs.	100 lbs.	4,742 cu. in.
DRAWERS:	1	9 3/4"	18 1/2"	2"			120 lbs.
	4	9 3/4"	18 1/2"	4"			120 lbs.
	1	9 3/4"	18 1/2"	10"			120 lbs.

- Reversible - Hangs on Either Side of MP Cabinets
- Ball-Bearing Slides, Drawer Liners, Coated MDF Top

300MP 2-SHELF SIDE LOCKER

OVERALL:	DRS.	WIDTH	DEPTH	HEIGHT	NET WT	SHIP WT	CAPACITY
		13 3/8"	20"	33 1/8"	56 lbs.	61 lbs.	7,000 cu. in.
SHELVES:	2	9 3/4"	18 1/2"	2"			120 lbs.

- Ball-Bearing Slides on two adjustable shelves
- Coated MDF Top



306MP



300MP

306MP/300MP Fits:
2907MP/2912MP/3407MP/3412MP/3900MP
4400MP/5212MP/5804MP

41" INDUSTRIAL

10494 13-DRAWER CABINET

OVERALL:	DRS.	WIDTH	DEPTH	HEIGHT	NET WT	SHIP WT	CAPACITY
	13	41 3/8"	20"	42"	245 lbs.	275 lbs.	16,868 cu. in.
LARGE BANK:	1	25"	18 1/2"	2"			120 lbs.
	5	25"	18 1/2"	4"			120 lbs.
	1	25"	18 1/2"	6"			120 lbs.
SMALL BANK:	1	9 3/4"	18 1/2"	2"			120 lbs.
	4	9 3/4"	18 1/2"	4"			120 lbs.
	1	9 3/4"	18 1/2"	10"			240 lbs.

- 5" x 2" Roller Bearing Casters
- Ball-Bearing Drawer Slide



10495 12-DRAWER CABINET

OVERALL:	DRS.	WIDTH	DEPTH	HEIGHT	NET WT	SHIP WT	CAPACITY
	12	41 3/8"	20"	42"	250 lbs.	280 lbs.	16,686 cu. in.
TOP DRAWER:	1	37 3/4"	18 1/2"	6"			120 lbs.
LARGE BANK:	2	25"	18 1/2"	2"			120 lbs.
	3	25"	18 1/2"	4"			120 lbs.
	1	25"	18 1/2"	6"			120 lbs.
SMALL BANK:	2	9 3/4"	18 1/2"	2"			120 lbs.
	2	9 3/4"	18 1/2"	4"			120 lbs.
	1	9 3/4"	18 1/2"	10"			240 lbs.

- 5" x 2" Roller Bearing Casters
- Ball-Bearing Drawer Slides



10486 8-DRAWER TOP CHEST

OVERALL:	DRS.	WIDTH	DEPTH	HEIGHT	NET WT	SHIP WT	CAPACITY
	7	41 1/4"	20"	21 1/2"	125 lbs.	155 lbs.	11,617 cu. in.
TOP TILL:	-	41 1/4"	19 3/4"	4 3/4"			120 lbs.
LEFT BANK:	2	25"	18 1/2"	2"			120 lbs.
	1	25"	18 1/2"	4"			120 lbs.
RIGHT BANK:	2	9 3/4"	18 1/2"	2"			120 lbs.
	1	9 3/4"	18 1/2"	4"			120 lbs.
BOTTOM DRAWER:	1	37 1/4"	18 1/2"	5"			120 lbs.

- Fits 41" Cabinets



34" INDUSTRIAL

348X 8-DRAWER CABINET

OVERALL:	DRS.	WIDTH	DEPTH	HEIGHT	NET WT	SHIP WT	CAPACITY
	8	34"	20"	40"	206 lbs.	228 lbs.	14,319 cu. in.
DRAWERS:	3	30"	18 1/2"	2"			120 lbs.
	4	30"	18 1/2"	4"			120 lbs.
	1	30"	18 1/2"	6"			120 lbs.

- 5" x 2" Roller Bearing Casters Hold Up to 350 lbs. Each
- Ball-Bearing Drawer Slides



29" INDUSTRIAL

295X 5-DRAWER CABINET

OVERALL:	DRS.	WIDTH	DEPTH	HEIGHT	NET WT	SHIP WT	CAPACITY
	5	29"	20"	35"	128/133 lbs.	140/145 lbs.	9,720 cu. in.
DRAWERS:	3	25"	18 1/2"	2"			120 lbs.
	2	25"	18 1/2"	4"			120 lbs.
COMPARTMENT:	-	26 1/8"	19 3/4"	11 1/4"			120 lbs.

297X 7-DRAWER CABINET

OVERALL:	DRS.	WIDTH	DEPTH	HEIGHT	NET WT	SHIP WT	CAPACITY
	7	29"	20"	35"	146/153 lbs.	158/165 lbs.	10,235 cu. in.
DRAWERS:	3	25"	18 1/2"	2"			120 lbs.
	3	25"	18 1/2"	4"			120 lbs.
	1	25"	18 1/2"	6"			120 lbs.

- 5" x 2" Roller Bearing Casters Hold Up to 350 lbs. Each
- Ball-Bearing Slides



295 Shown

Swing-Down Panel Conceals and Secures Spacious Storage Compartments



297 Shown



2905X 29" 5-DRAWER CHEST

OVERALL:	DRS.	WIDTH	DEPTH	HEIGHT	NET WT	SHIP WT	CAPACITY
	5	29"	20"	18 7/8"	100 lbs.	109 lbs.	7,077 cu. in.
TOP TILL:	-	28 7/8"	19 3/4"	3 3/8"			120 lbs.
DRAWERS:	4	25"	18 1/2"	2"			120 lbs.
	1	25"	18 1/2"	4"			120 lbs.

- Models 2905X Fit 29" or 34" Wide Roller Cabinets
- Gas shock lid stays
- Ball Bearing Drawer Slides



2805/2805X 29" 5-DRAWER CHEST

OVERALL:	DRS.	WIDTH	DEPTH	HEIGHT	NET WT	SHIP WT	CAPACITY
	5	29"	20"	16 5/8"	87 lbs.	96 lbs.	4,872 cu. in.
DRAWERS:	4	25"	18 1/2"	2"			120 lbs.
	1	25"	18 1/2"	4"			120 lbs.

- Fits 29" or 34" Wide Roller Cabinets
- (2805) Friction or (2805X) Ball Bearing Drawer Slide Options

K2000

202X 2-SHELF SIDE LOCKER

OVERALL:	DRS.	WIDTH	DEPTH	HEIGHT	NET WT	SHIP WT	CAPACITY
	2	13 5/8"	20"	29"	47 lbs.	52 lbs.	6,116 cu. in.
SHELVES:	2	9 3/4"	18 1/2"	2"			120 lbs.

302X 2-SHELF LOCKER

OVERALL:	DRS.	WIDTH	DEPTH	HEIGHT	NET WT	SHIP WT	CAPACITY
	2	13 5/8"	20"	33 1/8"	56 lbs.	61 lbs.	7,000 cu. in.
SHELVES:	2	9 3/4"	18 1/2"	2"			120 lbs.

- Locking Door & 2 Adjustable Pull-Out Shelves with Ball-Bearing Slides.
- Hangs on Either Side of Your Roller Cabinet.
- Metal Thickness: Body - 18 ga. Drawers - 20 ga.
- Model 202X - Fits Models 295(X), 297(X), 4410, & 4400MP
- Model 302X - Fits Models 348X, 10495, & 10494



205X 5-DRAWER SIDE CABINET

OVERALL:	DRS.	WIDTH	DEPTH	HEIGHT	NET WT	SHIP WT	CAPACITY
	5	13 5/8"	20"	29"	99/102 lbs.	99/102 lbs.	4,073 cu. in.
DRAWERS:	1	9 3/4"	18 1/2"	2"			120 lbs.
	3	9 3/4"	18 1/2"	4"			120 lbs.
	1	9 3/4"	18 1/2"	10"			240 lbs.

- Ball-Bearing Slides
- Fits Models 295(X), 297(X), 4410, & 4400MP
- Hangs on Either Side of Your Rolling Cabinet



306X 6-DRAWER SIDE CABINET

OVERALL:	DRS.	WIDTH	DEPTH	HEIGHT	NET WT	SHIP WT	CAPACITY
	6	13 5/8"	20"	33 1/8"	94 lbs.	100 lbs.	4,742 cu. in.
DRAWERS:	1	9 3/4"	18 1/2"	2"			120 lbs.
	4	9 3/4"	18 1/2"	4"			120 lbs.
	1	9 3/4"	18 1/2"	10"			240 lbs.

- Hangs on Either Side of Rolling Cabinet
- Ball-Bearing Drawer Slides
- Model 306X - Fits Models 348X, 10494, & 10495



TB20 20" HANG ON TOOLBOARD PANEL

OVERALL:	DRS.	WIDTH	DEPTH	HEIGHT	NET WT	SHIP WT	CAPACITY
	-	29"	20"	1/2"	7 lbs.	9 lbs.	- cu. in.

- Hangs on Either Side of Roller Cabinets
- 10 pc. Toolholder Hook Set (99851)



29"

STAINLESS STEEL

28085 5-DRAWER STAINLESS STEEL CABINET WITH TUBULAR LOCK/KEY SET

OVERALL:	DRS.	WIDTH	DEPTH	HEIGHT	NET WT	SHIP WT	CAPACITY
	5	29"	20"	35"	126 lbs.	141 lbs.	10,235 cu. in.
DRAWERS:	1	25"	18 1/2"	2"			120 lbs.
	3	25"	18 1/2"	4"			120 lbs.
	1	25"	18 1/2"	10"			120 lbs.

- #4 Brushed Finish
- Ball-Bearing Drawer Slides
- 5x1 1/2" Casters with 350 lbs. capacity
- 18 gauge steel



28087 7-DRAWER STAINLESS STEEL CABINET WITH TUBULAR LOCK/KEY SET

OVERALL:	DRS.	WIDTH	DEPTH	HEIGHT	NET WT	SHIP WT	CAPACITY
	7	29"	20"	35"	145 lbs.	156 lbs.	10,235 cu. in.
DRAWERS:	3	25"	18 1/2"	2"			120 lbs.
	3	25"	18 1/2"	4"			120 lbs.
	1	25"	18 1/2"	6"			120 lbs.

- #4 Brushed Finish
- Ball-Bearing Drawer Slides
- 5x1 1/2" Casters with 350 lbs. capacity
- 18 gauge steel



28197 7-DRAWER STAINLESS STEEL CABINET WITH COMBINATION LOCK SET

OVERALL:	DRS.	WIDTH	DEPTH	HEIGHT	NET WT	SHIP WT	CAPACITY
	7	29"	20"	35"	145 lbs.	156 lbs.	10,235 cu. in.
DRAWERS:	3	25"	18 1/2"	2"			120 lbs.
	3	25"	18 1/2"	4"			120 lbs.
	1	25"	18 1/2"	6"			120 lbs.

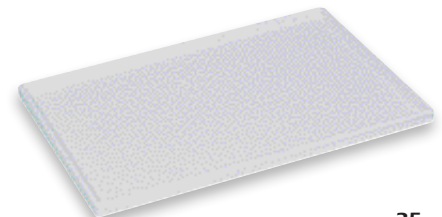
- #4 Brushed Finish
- Ball-Bearing Drawer Slides
- 5x1 1/2" Casters with 350 lbs. capacity
- Easily Accessible Lock with 2, 3, 4 or 5-Digit Combinations
- No Batteries Required for Operation
- 18 gauge steel



29000 PLASTIC WORK SURFACE

OVERALL:	DRS.	WIDTH	DEPTH	HEIGHT	NET WT	SHIP WT	CAPACITY
	-	29"	20"	1"	3 lbs.	3.5 lbs.	-

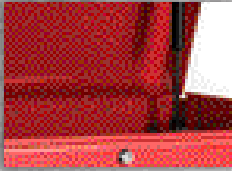
- Seamless, ABS White Plastic Cover Fits Snugly Over Roller Cabinet Top
- Quarter-Inch Raised Lip Helps Prevent Roll Offs
- Easy To Clean; Adds Finished Look



K1800

MAINTENANCE PRO™ INDUSTRIAL

The K1800 is packed with all power and still fits in your tight spaces. **At 18" in depth the smaller frame allows for more storage in more places.**



Gas-Shock Lid Stays In Top Chests & Canopies



Ball-Bearing or Friction Drawer Slides Options



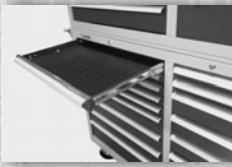
High Security Tubular Locking System



Heavy-Duty Roller Bearing Casters



10" Center Wheel Axle Adds Strength, Stability and Increased Mobility



Kennedy Badged Non-Slip Drawer Liners Maintenance Pro™ Only



Tubular Steel Side Handles

INDUSTRY SOLUTIONS



STANDARD FEATURES

	STEEL GAUGE	CENTER WHEEL AXLE	CASTERS	WORK SURFACES	OTHER
MAINTENANCE PRO™	16/18 ga	X	6x2	Coated MDF	Drawer Liners
INDUSTRIAL	18/20 ga		5x2		

53"

MAINTENANCE PRO™

5302MP 8-DRAWER TOP CHEST

OVERALL:	DRS.	WIDTH	DEPTH	HEIGHT	NET WT	SHIP WT	CAPACITY
	8	53"	18"	18 1/2"	155 lbs.	185 lbs.	12,060 cu. in.
TOP TILL:	-	52 5/8"	17 7/8"	2 1/2"			-
DRAWERS:	4	23"	16 1/2"	2"			120 lbs.
	4	23"	16 1/2"	4"			120 lbs.



5300MP 12-DRAWER CABINET

OVERALL:	DRS.	WIDTH	DEPTH	HEIGHT	NET WT	SHIP WT	CAPACITY
	8	53"	18"	41 3/4"	335 lbs.	365 lbs.	19,992 cu. in.
TOP DRAWER:	1	49"	16 1/2"	3 5/8"			120 lbs.
LEFT BANK:	2	23"	16 1/2"	2"			120 lbs.
	3	23"	16 1/2"	4"			120 lbs.
	1	23"	16 1/2"	6"			120 lbs.
RIGHT BANK:	2	23"	16 1/2"	2"			120 lbs.
	2	23"	16 1/2"	4"			120 lbs.
	1	23"	16 1/2"	10"			240 lbs.



- Ball-Bearing Drawer Slides That Move Easily Under Heavy Drawer Loads
- Full-Width Aluminum Drawer Pulls
- Large 6" x 2" Roller Bearing Heavy Duty Casters
- 10" Center Wheel Axle Adds Strength & Stability
- Coated MDF Work Surface
- Metal Thickness: Body - 16 ga. Drawers - 20 ga.

5302MP/5300MP Shown

382MP 6-DRAWER SIDE CABINET

OVERALL:	DRS.	WIDTH	DEPTH	HEIGHT	NET WT	SHIP WT	CAPACITY
	6	13 5/8"	18"	33 1/8"	89 lbs.	94 lbs.	4,231 cu. in.
DRAWERS:	1	9 3/4"	16 1/2"	2"			120 lbs.
	4	9 3/4"	16 1/2"	4"			120 lbs.
	1	9 3/4"	16 1/2"	10"			240 lbs.

380MP 2-SHELF SIDE LOCKER

OVERALL:	DRS.	WIDTH	DEPTH	HEIGHT	NET WT	SHIP WT	CAPACITY
	2	13 5/8"	18"	33 1/8"	53 lbs.	68 lbs.	6,300 cu. in.
SHELVES:	1	9 3/4"	16 1/2"	2"			120 lbs.
							120 lbs.
							120 lbs.

- Hangs on Either Side of MP Cabinets
- Metal Thickness: Body - 16 ga. Drawers - 18 ga.
- Model 382/380MP are Compatible with 5300 MP Cabinets



382MP



380MP

27"

MAINTENANCE PRO™

2700MP 5-DRAWER TOP CHEST

OVERALL:	DRS.	WIDTH	DEPTH	HEIGHT	NET WT	SHIP WT	CAPACITY
	5	27"	18"	18 3/8"	90 lbs.	98 lbs.	6,243 cu. in.
TOP TILL:	-	26 5/8"	17 1/2"	3 5/8"			120 lbs.
DRAWERS:	4	23"	16 1/2"	2"			120 lbs.
	1	23"	16 1/2"	4"			120 lbs.



2702MP 6-DRAWER CABINET

OVERALL:	DRS.	WIDTH	DEPTH	HEIGHT	NET WT	SHIP WT	CAPACITY
	6	27"	18"	41 3/4"	140 lbs.	150 lbs.	10,626 cu. in.
DRAWERS:	1	23"	16 1/2"	2"			120 lbs.
	4	23"	16 1/2"	4"			120 lbs.
	1	23"	16 1/2"	10"			120 lbs.



- Heavy Duty, Non-Slip Drawer Liners & Full-Width Aluminum Drawer Pulls
- Large 6" x 2" Roller Bearing Heavy Duty Casters
- Ball Bearing Drawer Slides
- Coated MDF Work Surface
- Top chest has gas shock lid stays



MADE IN THE USA

39"

INDUSTRIAL

10491 7-DRAWER CABINET

OVERALL:	DRS.	WIDTH	DEPTH	HEIGHT	NET WT	SHIP WT	CAPACITY
	7	39 3/8"	18"	35 1/8"	175 lbs.	205 lbs.	13,865 cu. in.
DRAWERS:	3	23"	16 1/2"	2"			120 lbs.
	3	23"	16 1/2"	4"			120 lbs.
	1	23"	16 1/2"	6"			120 lbs.
COMPARTMENT:	-	10 3/4"	18"	28"			-

- Storage Compartment with MDF Shelf
- Ball-Bearing Drawer Slides
- 5" x 2" Roller Bearing Casters Hold Up to 350 lbs. Each



10493 12-DRAWER CABINET

OVERALL:	DRS.	WIDTH	DEPTH	HEIGHT	NET WT	SHIP WT	CAPACITY
	12	39 3/8"	18"	39 1/8"	225 lbs.	255 lbs.	13,365 cu. in.
TOP DRAWER:	1	35 3/4"	16 1/2"	6"			120 lbs.
LARGE BANK:	2	23"	16 1/2"	2"			120 lbs.
	3	23"	16 1/2"	4"			120 lbs.
	1	23"	16 1/2"	6"			120 lbs.
SMALL BANK:	2	9 3/4"	16 1/2"	2"			120 lbs.
	2	9 3/4"	16 1/2"	4"			120 lbs.
	1	9 3/4"	16 1/2"	10"			240 lbs.

- MDF Work Surface & Wide Top Drawer for Added Storage
- 5" x 2" Roller Bearing Casters Hold Up to 350 lbs. Each



10488 8-DRAWER TOP CHEST

OVERALL:	DRS.	WIDTH	DEPTH	HEIGHT	NET WT	SHIP WT	CAPACITY
	8	39 3/8"	17 3/4"	16 1/2"	140 lbs.	150 lbs.	7,742 cu. in.
SMALL BANK:	2	9 4/5"	16 1/2"	2"			120 lbs.
	2	9 4/5"	16 1/2"	4"			120 lbs.
LARGE BANK:	2	23"	16 1/2"	2"			120 lbs.
	2	23"	16 1/2"	4"			120 lbs.

- Fits 39" Cabinets
- Heavy-Duty, Plated Lift Handles



K1800

39"

INDUSTRIAL

315X 15-DRAWER CABINET

OVERALL:	DRS.	WIDTH	DEPTH	HEIGHT	NET WT	SHIP WT	CAPACITY
	15	39 3/8"	18"	39"	230 lbs.	260 lbs.	13,054 cu. in.
LARGE BANK:	5	23"	16 1/2"	2"			120 lbs.
	3	23"	16 1/2"	4"			120 lbs.
	1	23"	16 1/2"	6"			120 lbs.
SMALL BANK:	2	9 5/8"	16 1/2"	2"			120 lbs.
	3	9 5/8"	16 1/2"	4"			120 lbs.
	1	9 5/8"	16 1/2"	12"			120 lbs.

- 5" x 2" Roller Bearing Casters Hold Up to 350 lbs. Each
- High Security Tubular Locking System



305X 5-DRAWER CHEST

OVERALL:	DRS.	WIDTH	DEPTH	HEIGHT	NET WT	SHIP WT	CAPACITY
	5	39 3/8"	18"	16 1/2"	93 lbs.	102 lbs.	7,707 cu. in.
DRAWERS:	4	23"	16 1/2"	2"			120 lbs.
	1	23"	16 1/2"	4"			120 lbs.
COMPARTMENT:	-	13 1/2"	17 3/4"	13 1/4"			

- Fits 39" Cabinets
- Heavy-Duty, Plated Lift Handles
- Compartment Has Removable Partial Shelf and Locking Door

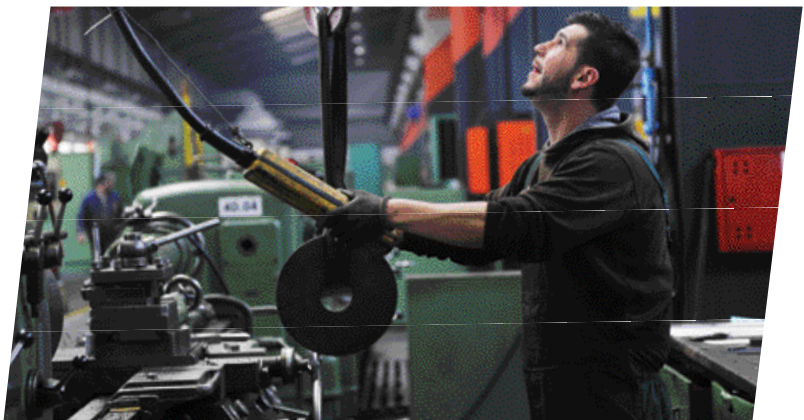


310X 10-DRAWER CABINET

OVERALL:	DRS.	WIDTH	DEPTH	HEIGHT	NET WT	SHIP WT	CAPACITY
	10	39 3/8"	18"	34"	180 lbs.	210 lbs.	11,551 cu. in.
LARGE BANK:	3	23"	16 1/2"	4"			120 lbs.
	2	23"	16 1/2"	6"			120 lbs.
SMALL BANK:	3	9 5/8"	16 1/2"	4"			120 lbs.
	2	9 5/8"	16 1/2"	6"			120 lbs.

MADE IN THE USA

KENNEDYMFG.com



27" INDUSTRIAL

273X 3-DRAWER CABINET

OVERALL:	DRS.	WIDTH	DEPTH	HEIGHT	NET WT	SHIP WT	CAPACITY
	3	27"	18"	35"	99/102 lbs.	110/113 lbs.	8,235 cu. in.
DRAWERS:	2	23"	16 1/2"	4"			120 lbs.
	1	23"	16 1/2"	6"			120 lbs.
COMPARTMENT:	-	24 1/8"	17 3/4"	11 1/4"			120 lbs.

- 5" x 2" Roller Bearing Casters Hold Up to 350 lbs. Each
- Swing-Down Panel Conceals and Secures Spacious Storage Compartment



275X 5-DRAWER CABINET

OVERALL:	DRS.	WIDTH	DEPTH	HEIGHT	NET WT	SHIP WT	CAPACITY
	3	27"	18"	35"	110/115 lbs.	121/126 lbs.	8,003 cu. in.
DRAWERS:	3	23"	16 1/2"	2"			120 lbs.
	2	23"	16 1/2"	4"			120 lbs.
COMPARTMENT:	-	24 1/8"	17 3/4"	11 1/4"			120 lbs.

- 5" x 2" Roller Bearing Casters Hold Up to 350 lbs. Each
- Swing-Down Panels Conceal and Secure Spacious Storage Compartments



277X 7-DRAWER CABINET

OVERALL:	DRS.	WIDTH	DEPTH	HEIGHT	NET WT	SHIP WT	CAPACITY
	7	27"	18"	35"	127/134 lbs.	138/145 lbs.	8,404 cu. in.
DRAWERS:	3	23"	16 1/2"	2"			120 lbs.
	3	23"	16 1/2"	4"			120 lbs.
	1	23"	16 1/2"	6"			120 lbs.

- 5" x 2" Roller Bearing Casters Hold Up to 350 lbs. Each



376X 6-DRAWER CABINET

OVERALL:	DRS.	WIDTH	DEPTH	HEIGHT	NET WT	SHIP WT	CAPACITY
	6	27"	18"	39"	137 lbs.	148 lbs.	9,426 cu. in.
DRAWERS:	3	23"	16 1/2"	2"			120 lbs.
	3	23"	16 1/2"	4"			120 lbs.
COMPARTMENT:	-	24 1/8"	17 3/4"	11 1/4"			120 lbs.

- 5" x 2" Roller Bearing Casters Hold Up to 350 lbs. Each
- Swing-Down Panel Conceals and Secures Spacious Storage Compartment



378X 8-DRAWER CABINET

OVERALL:	DRS.	WIDTH	DEPTH	HEIGHT	NET WT	SHIP WT	CAPACITY
	8	27"	18"	39"	154 lbs.	165 lbs.	9,826 cu. in.
DRAWERS:	3	23"	16 1/2"	2"			120 lbs.
	4	23"	16 1/2"	4"			120 lbs.
	1	23"	16 1/2"	6"			120 lbs.

- 5" x 2" Roller Bearing Casters Hold Up to 350 lbs. Each



21" INDUSTRIAL

21040 4-DRAWER CABINET

OVERALL:	DRS.	WIDTH	DEPTH	HEIGHT	NET WT	SHIP WT	CAPACITY
	4	20 1/2"	18"	34"	103 lbs.	133 lbs.	5,950 cu. in.
DRAWERS:	2	16 1/2"	16 1/2"	3"			120 lbs.
	1	16 1/2"	16 1/2"	6 1/4"			120 lbs.
	1	16 1/2"	16 1/2"	9 1/2"			120 lbs.

- 5" x 1 1/4" Roller Bearing Casters Hold Up to 200 lbs. Each
- Ball-Bearing Drawer Slides and Tubular Push Handle
- Small in Size, But Big on Security!
- Metal Thickness: Body - 18 ga. Drawers - 20 ga.
- Model 21040 - Features High-Security Tubular Locking System



386X 6-DRAWER SIDE CABINET

OVERALL:	DRS.	WIDTH	DEPTH	HEIGHT	NET WT	SHIP WT	CAPACITY
	6	13 3/8"	18"	33 1/8"	89 lbs.	94 lbs.	4,231 cu. in.
DRAWERS:	1	9 3/4"	16 1/2"	2"			120 lbs.
	4	9 3/4"	16 1/2"	4"			120 lbs.
	1	9 3/4"	16 1/2"	10"			240 lbs.

- Hangs on Either Side of Rolling Cabinet
- Ball-Bearing Drawer Slides
- Metal Thickness: Body - 18 ga. Drawers - 20 ga.
- Model 386X - Fits Models 376X, 378X, 10492, 10493, & 315X



185X 5-DRAWER SIDE CABINET

OVERALL:	DRS.	WIDTH	DEPTH	HEIGHT	NET WT	SHIP WT	CAPACITY
	5	13 3/8"	18"	29"	67/72 lbs.	71/76 lbs.	3,634 cu. in.
DRAWERS:	1	9 3/4"	16 1/2"	2"			120 lbs.
	3	9 3/4"	16 1/2"	4"			120 lbs.
	1	9 3/4"	16 1/2"	10"			240 lbs.

- Hangs on Either Side of Rolling Cabinet
- Metal Thickness: Body - 18 ga. Drawers - 20 ga.
- Model 185 - Features Friction Slides
- Model 185X - Features Ball-Bearing Slides
- Fits Models 273(X), 275(X), 277(X), 310X, & 10491



MADE IN THE USA

285/285X 27" 5-DRAWER CHEST

OVERALL:	DRS.	WIDTH	DEPTH	HEIGHT	NET WT	SHIP WT	CAPACITY
	5	27"	18"	16 5/8"	75 lbs.	84 lbs.	4,000 cu. in.
DRAWERS:	4	23"	16 1/2"	2"			120 lbs.
	1	23"	16 1/2"	4"			120 lbs.

- Fits 27" Wide Roller Cabinets
- (285) Friction or (285X) Ball Bearing Drawer Slide Options



2705X 27" 5-DRAWER CHEST

OVERALL:	DRS.	WIDTH	DEPTH	HEIGHT	NET WT	SHIP WT	CAPACITY
	5	27"	18"	18 3/8"	88 lbs.	96 lbs.	5,842 cu. in.
TOP TILL:	-	26 7/8"	17 3/4"	3 5/8"			120 lbs.
DRAWERS:	4	23"	16 1/2"	2"			120 lbs.
	1	23"	16 1/2"	4"			120 lbs.

- Models 2705X Fit 27" Wide Roller Cabinets
- Gas shock lid stays
- Ball Bearing Drawer Slides



ADD ONS

182X 2-SHELF SIDE LOCKER

OVERALL:	DRS.	WIDTH	DEPTH	HEIGHT	NET WT	SHIP WT	CAPACITY
	-	13 5/8"	18"	29"	45 lbs.	49 lbs.	5,500 cu. in.
SHELVES:	2	9 3/4"	16 1/2"	2"			120 lbs.

382X 2-SHELF SIDE LOCKER

OVERALL:	DRS.	WIDTH	DEPTH	HEIGHT	NET WT	SHIP WT	CAPACITY
	-	13 5/8"	18"	33 1/8"	53 lbs.	58 lbs.	6,300 cu. in.
SHELVES:	2	9 3/4"	16 1/2"	2"			120 lbs.

- Locking Door & 2 Adjustable Pull-Out Shelves with Ball-Bearing Slides.
- Hangs on Either Side of Your Roller Cabinet.
- Metal Thickness: Body - 18 ga. Drawers - 20 ga.
- Model 182X - Fits Models 273(X), 275(X), 277(X), 310(X), & 10491
- Model 382X - Fits Models 376X, 378X, 315X, 10492, & 10493



DS1 FOLD-AWAY CABINET SHELF

OVERALL:	DRS.	WIDTH	DEPTH	HEIGHT	NET WT	SHIP WT	CAPACITY
	-	20 1/8"	17 1/4"	1"	10.5 lbs.	11 lbs.	343 sq. in.

- Folds Flat When Not In Use
- Raised Sides Keep Tools From Falling Off
- Fits Any Industrial, Maintenance Pro, or Pro Line Roller Cabinet
- Weight Capacity: 40 lbs.



Shelf "Open"

Shelf "Closed"

TB18 18" HANG ON TOOLBOARD PANEL

OVERALL:	DRS.	WIDTH	DEPTH	HEIGHT	NET WT	SHIP WT	CAPACITY
	-	29"	18"	1/2"	9 lbs.	11 lbs.	-

- Hangs on Either Side of Roller Cabinets
- 10 pc. Tool Holder Hook Set (99851)



**OPEN.
CLOSE.
& GET THE
JOB DONE.**

**800-413-8665
KENNEDYMFG.com**

1260 Industrial Drive, Van Wert, OH 45891
800-413-8665 | 419-238-5644 F | KennedyMFG.com
CQT Kennedy LLC dba Kennedy Manufacturing Co.

KENNEDY[®]

A1000 Rev 04/2017